



# **Texas Healthcare Information Collection**

---

**Presentation to the Senate Committee  
on Health and Human Services**

**Kirk Cole, Senior Advisor**

**March 21, 2018**



**TEXAS**  
Health and Human  
Services

---

**Texas Department of State  
Health Services**

# Presentation Overview

---



TEXAS  
Health and Human Services

Texas Department of State  
Health Services

- Background on THCIC
- What THCIC collects
- How THCIC data is used at DSHS
- How THCIC data is used externally
- How stakeholders interact with THCIC data
- Possible collection, coordination, and utilization improvements

# Background

---

- THCIC first enacted in 1995, existed as a standalone agency until 2003
- THCIC is directed broadly to:
  - Collect charges, utilization data, provider quality data, and outcome data
  - Through the data collected, facilitate the promotion and accessibility of cost-effective, good quality health care



TEXAS

Health and Human Services

Texas Department of State  
Health Services

3/20/2018

# Background: Funding

---

- Fiscal Year 2017 Funding
  - General Revenue: \$1.8 million
  - Data Fees Collected: \$586,000
- Fiscal Year 2017 Expenditures
  - \$1.4 million: Third party data collector
  - \$400,000: Staffing for communicating with and training facilities, data analysis, report and file production, staff training



TEXAS

Health and Human Services

Texas Department of State  
Health Services

3/20/2018

# What THCIC collects

---

THCIC collects inpatient and outpatient health care activity information from

- **Discharge Data:** All payor claims from specific health care facility types specified in statute (HCDCS)
- **Insurance Data:** Commercial insurance (HMO) organization data (HEDIS)



TEXAS

Health and Human Services

Texas Department of State  
Health Services

3/20/2018

# What THCIC Collects: Discharge Data

---

- Facilities currently authorized to collect from
  - **Hospitals**
  - **Ambulatory Surgical Centers**
  - Chemical Dependency Treatment Facilities
  - Renal Dialysis Facilities
  - Birthing Centers
  - Rural Health Clinics
  - Federally Qualified Health Centers
  - Free-Standing Imaging Centers
- Collection of discharge data is driven by
  - Authorization in statute to collect from a facility type
  - Appropriations to facilitate collection, analysis, etc.



TEXAS

Health and Human Services

Texas Department of State  
Health Services

3/20/2018

# What THCIC Collects: Discharge Data

Approx. 20 million inpatient and outpatient payor claim records collected annually

## Data collected (examples)

Healthcare **charges**: what is initially billed, before adjustments

Length of stay

Patient demographics

Major procedures information

Quality of care indicators

Diagnoses

## Data NOT collected

Actual healthcare **costs to provide billed service**

What is finally billed, what is actually **paid**, after adjustments

Data from electronic medical records

Physician charges



TEXAS

Health and Human Services

Texas Department of State  
Health Services

3/20/2018

# What THCIC Collects: Discharge Data

---

- Data collection outsourced to a third-party
  - Current annual cost: \$1.4 million
- Contractor required to collect, process, store, provide online correction and certification tools for data submitters
- Competitive bidding review in process due to contract cycle ending
  - FY Quarter estimate for naming awardee: TBD
  - Anticipated start date for data collection if new vendor chosen: TBD



TEXAS  
Health and Human Services

Texas Department of State  
Health Services

3/20/2018



# What THCIC Collects: HEDIS Measures

---



TEXAS  
Health and Human Services

Texas Department of State  
Health Services

- National data set of key performance measures related to health care
- Health Benefit Plan providers
  - Excludes Medicaid MCOs
- DSHS outsources to National Committee for Quality Assurance (NCQA) for production of HEDIS reports
- HEDIS reports on HMOs provided to Office of Public Insurance Counsel (OPIC) for the *Guide to Texas HMO Quality*



Healthcare Effectiveness Data  
and Information Set  
- HEDIS



TEXAS  
Health and Human Services

Texas Department of State  
Health Services

# How Data is Used by DSHS

---

## Reports Allowed/Required by Statute

- Public Use Data Files
- Research Data Files
- Hospital Inpatient Quality of Care Reports
- Potentially Preventable Reports Array:
  - Complications
  - Hospitalizations
  - Readmissions
  - Emergency Visits



TEXAS  
Health and Human Services

Texas Department of State  
Health Services

# How Data is Used by DSHS

---

## Initiatives

- **Potentially Preventable Hospitalizations:** data guided local initiatives to address reducing adult hospital visits and increasing outpatient visits and self-management for certain conditions
- **Future Use - Opioid-Related Visits:** data to be included on Texas Health Data website and will guide future policy discussions

# How THCIC Data is Used Externally

---

- Public and Research Use Files drive research by
  - Epidemiologists
  - Academics
  - Industries
  - Stakeholders
- Local health departments use as a surveillance tool to guide local interventions
- Purchased files generate ~\$300,000-\$800,000 in revenue annually
  - PUDF revenue FY 2017: \$501,000
  - RUDF revenue FY 2017: \$85,000



TEXAS

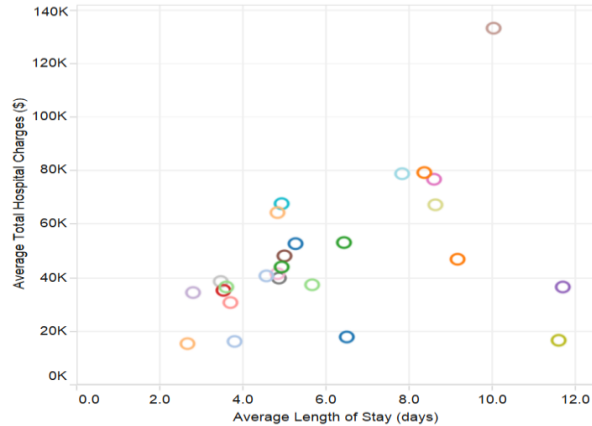
Health and Human Services

Texas Department of State  
Health Services

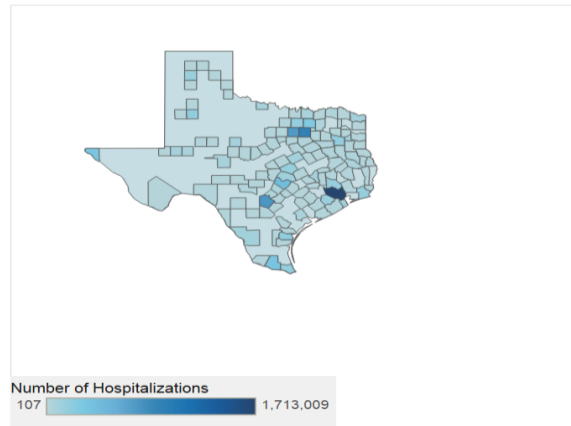
# How Stakeholders Interact with THCID: Texas Health Data

## Inpatient Utilization Data Visualization Dashboard

Relationship(s) between Length of Stay and Hospital Charges



Inpatient Hospitalizations by County



Number of Inpatient Hospitalizations by First Payor Source

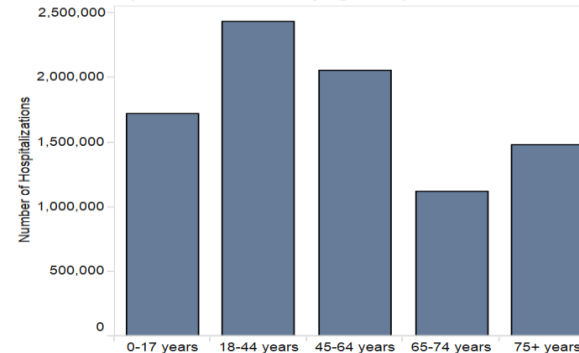
Medicaid	1,812,072
Medicare	2,981,142
Private Health Insurance	2,826,284
Uninsured	938,123
Other	255,762

Number of Inpatient Hospitalizations by Patient Status

Admitted as inpatient to this hospital	1,907
Discharged to care of home health service	671,618
Discharged to care of Home IV provider	4,593
Discharged to home or self-care (routine discharge)	6,683,365
Discharged to hospice—home	59,370
Discharged to hospice—medical facility	58,098
Discharged to intermediate care facility	61,852
Discharged to other short term general hospital	116,491
Discharged to skilled nursing facility	496,447
Discharged/transferred to a Designated Cancer Center or Children..	16,273
Discharged/transferred to Critical Access Hospital (CAH)	1,203

Selected Year(s): 2013, 2012, 2011

Number of Hospitalizations in Texas by Age Group



\* Unknown and Invalid values are not included in the bar graph.

## Instructions

### 1. Select Display Groups

Display by Diagnosis Group or Procedure Group  
Major Diagnostic Category

Major Diagnostic Category  
All

### 2. Select Filters

Service Year  
All

Geographic Area Type  
Statewide

Area  
All

Demographic Group in Bar Graph  
Age Group



TEXAS  
Health and Human  
Services

Texas Department of State  
Health Services



TEXAS  
Health and Human Services

Texas Department of State  
Health Services

# How Stakeholders Interact with THCIC

---

## The Consumer Guide to Healthcare

- Required by SB 1731, 80<sup>th</sup> Legislature, Regular Session (Subchapter B, Chapter 324, Health and Safety Code)
- Statute requires specific language to provide an overview of
  - Facility pricing (hospitals, ASCs, freestanding ER, birthing centers)
  - Average vs. billed charges, variations in charging driven by specific caveats
  - Links to specific websites outlined in statute, including the THCIC page

# Possible Improvements

---

- Enhance Texas Health Data utilization to improve data access to the public
- Streamline data review process for developing legislative and other reports using already scrubbed data submitted by facilities
- Collect complete dataset from all facilities DSHS is authorized to collect from to further enhance analysis of healthcare quality and charges (cost: ~\$3.6 million)
- Coordinate with OPIC and TDI to leverage information and efforts to improve consumer access to education, consumer tools, and healthcare cost data



TEXAS

Health and Human Services

Texas Department of State  
Health Services

3/20/2018

15



TEXAS  
Health and Human  
Services

# Thank you

---