



**2016 DSHS Arbovirus Activity Report**  
**Week #38 (ending September 24, 2016)**  
**Report Date: September 27, 2016**

**Table 1. 2016 Arbovirus Activity Summary, Texas, Weeks 1-38**

Disease	Positive Mosquito Pools	Avian	Equine	Sentinel Chicken	Human						TOTAL
					Febrile Illness	Neurologic Illness	Severe Dengue	TOTAL (HUMAN)	Deaths	PVD <sup>2</sup>	
California Serogroup <sup>1</sup>	2										2
Chikungunya					9			9			9
Dengue					30		1	31			31
Eastern Equine Encephalitis			2	26							28
St. Louis Encephalitis	1			2							3
West Nile	1575	4	21	13	57	107		164	4	22	1777
Zika <sup>3</sup>											
<b>TOTAL REPORTS</b>	<b>1578</b>	<b>4</b>	<b>23</b>	<b>41</b>	<b>96</b>	<b>107</b>	<b>1</b>	<b>204</b>	<b>4</b>	<b>22</b>	<b>1850</b>

<sup>1</sup>California Serogroup includes California encephalitis, Jamestown Canyon, Keystone, La Crosse, snowshoe hare, and trivittatus viruses.

<sup>2</sup>PVD - Presumptive viremic blood donors are people who had no symptoms at the time of donating blood through a blood collection agency, but whose blood tested positive when screened for the presence of West Nile virus or Zika virus. Unless they meet the case reporting criteria, they are not counted as a case for official reporting purposes and are not included in the "Total" column.

<sup>3</sup>For daily case counts and additional information related to Zika virus in humans, please visit [www.texaszika.org](http://www.texaszika.org).

**Table 2. 2016 Arbovirus Activity by County, Weeks 1-38**

County	CAL		CHIKV*		DENV*		EEEV				SLEV			WNV								COUNTY TOTAL
	M	H	M	H	M	H	M	E	SC	H	M	SC	H	M	A	E	SC	H				
																		WNF	WNND	PVD‡	TOTAL	
Angelina																			3		3	3
Austin																1						1
Bell				1										2					1		1	4
Bexar						1								1					1	1	1	3
Bosque																			1		1	1
<b>Bowie</b>																2						2
Brazoria														2								2
Brazos																		1			1	1
Brown						1																1
Burnet						1																1
Collin						2								76				9	6	1	15	93
Cooke														3								3
Coryell														1								1
Dallas				1		6								651				16	28	2	44	702
Denton	2													76		2		8	6	2	14	94
Dimmit																			1		1	1
Eastland																			1		1	1
Ector						1																1
El Paso														7	2			2	3		5	14
Ellis														26					1		1	27
Erath																1						1
Falls																			1		1	1
Fayette																1						1
Fort Bend				1		2								1						1		4

County	CAL		CHIKV*		DENV*		EEEV				SLEV			WNV								COUNTY TOTAL	
	M	H	M	H	M	H	M	E	SC	H	M	SC	H	M	A	E	SC	H					
																		WNF	WNND	PVD‡	TOTAL		
Franklin																2						2	
Galveston				1		1			26			2		2			13	1	2	1	3	48	
Grayson														40		1			1		1	42	
Gregg						1							4							1		5	
Guadalupe						1																1	
Harris				1		4								92	1				6	4	6	104	
Henderson																			1		1	1	
Hopkins																				1			
Hunt														10		1		1	3	1	4	15	
<b>Irion</b>																		1			1	1	
Jasper																1						1	
Jefferson														3				4			4	7	
Johnson														12					1		1	13	
Lamar																1			2		2	3	
Limestone																1			1		1	2	
Lubbock						2								4								6	
McLennan				1		1										1		2	4		6	9	
Montgomery														2		1			4	1	4	7	
Navarro																			2		2	2	
Nueces						1					1			22					4		4	28	
Orange								1						2						1		3	
Palo Pinto																			1		1	1	
<b>Parker</b>																1			1		1	2	
Polk																1						1	
Red River																			1	1	1	1	
Rockwall														17						1		1	18

County	CAL		CHIKV*		DENV*		EEEV				SLEV			WNV							COUNTY TOTAL	
	M	H	M	H	M	H	M	E	SC	H	M	SC	H	M	A	E	SC	H				
																		WNF	WNND	PVD‡		TOTAL
Runnels																			1		1	1
<b>San Jacinto</b>																1						1
Smith								1						5	1	1						8
Tarrant				1										501				11	17	3	28	530
Travis				1		3								7								11
Van Zandt																		1			1	1
<b>Victoria</b>																1					0	1
Webb														2								2
Wharton																				1		
Wichita														1								1
Williamson				1										3								4
Wood																			1		1	1
Total Number of Reports	2	0	0	9	0	31	0	2	26	0	1	2	0	1575	4	21	13	57	107	22	164	1850

M - mosquito A-avian E-equine SC- sentinel chicken H- human WNF - West Nile Fever WNND - West Nile Neuroinvasive Disease

CAL - California Serogroup Viruses

CHIKV - Chikungunya Virus

DENV - Dengue Virus

EEEV - Eastern Equine Encephalitis Virus

SLEV - St. Louis Encephalitis Virus

WNV - West Nile Virus

\*All reported cases are imported.

‡PVDs are not included in any of the "Total" columns.

Figure 1. Texas Counties Reporting any Arbovirus Activity, Weeks 1-38

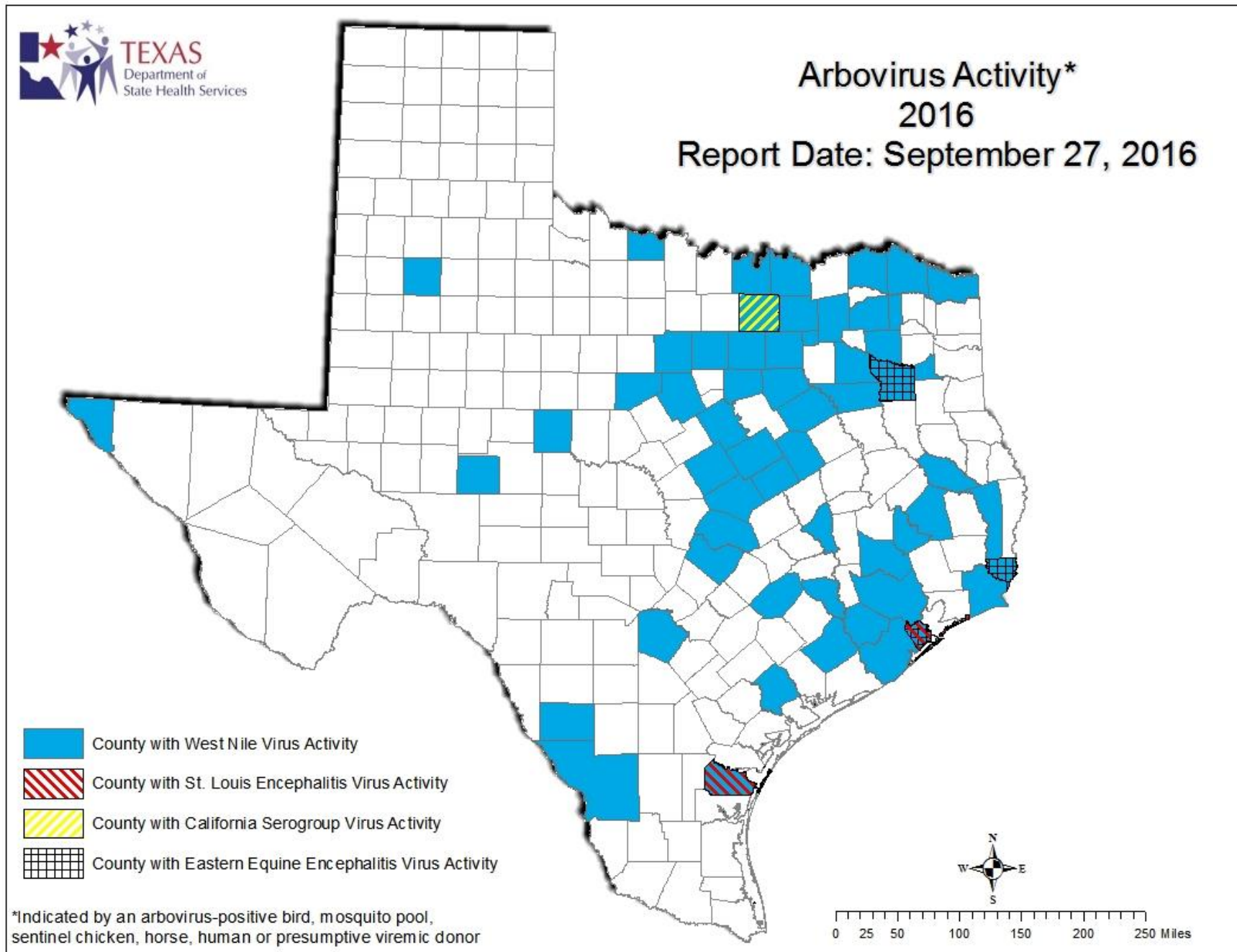


Figure 2. Epidemiologic Curve of Mosquito WNV Activity, 2014-2016

### WNV-Positive Mosquito Pools Reported in Texas, by MMWR Week, 2014-2016

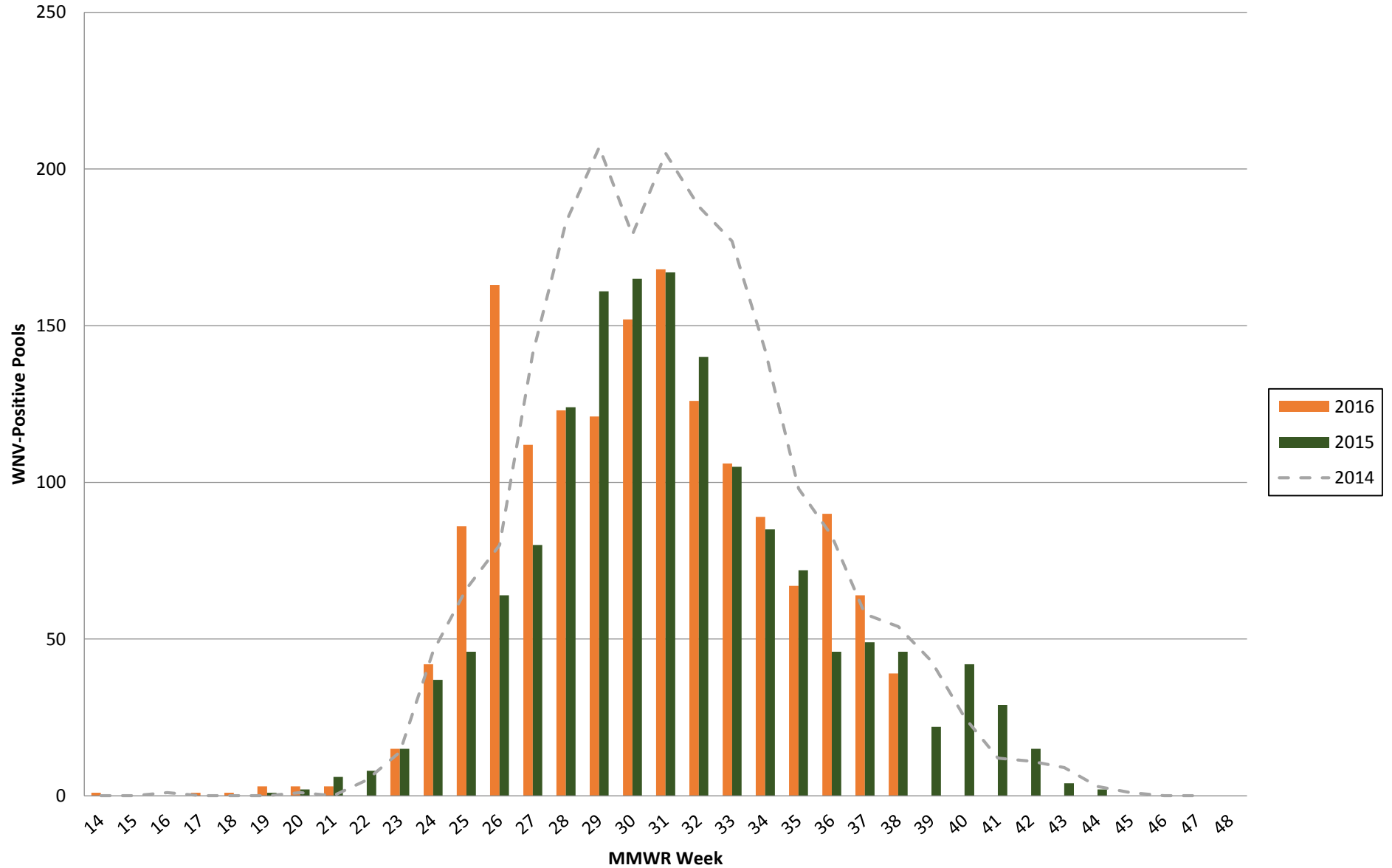


Figure 3. Epidemiologic Curve of Human WNV Activity, 2014-2016

