

SAS Snowflake Integration

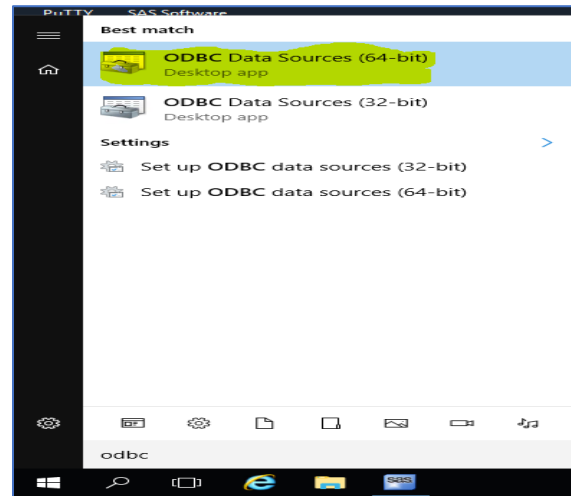
Approach 1: Steps to connect via SAS interface

Run the following command in SAS editor

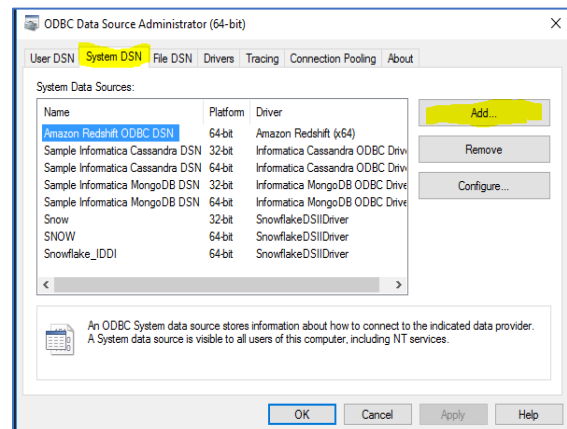
```
LIBNAME mydblib sasiosnf server="txhhs.us-east-1-  
gov.aws.snowflakecomputing.com" database=IDDI_DNA_DB  
user= YOUR USER ID password=YOUR PASSWORD;
```

Approach 2: Steps to connect via ODBC

1. Search for 64-bit ODBC on your workspace

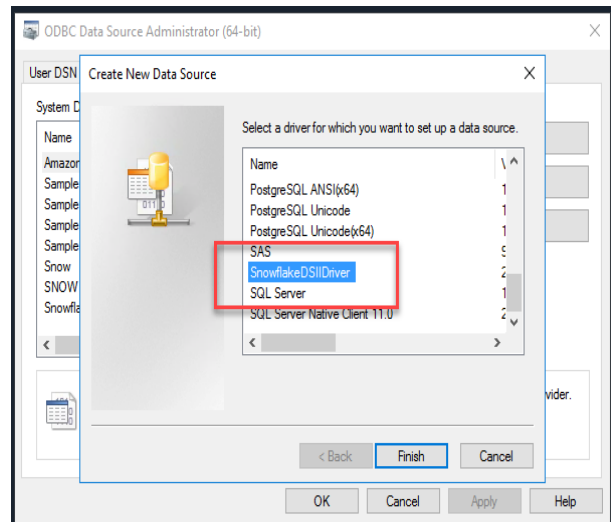


2. In ODBC setup view, go to System DSN and then click on ADD



3. Go to SnowflakeDSIIDriver data source and click finish

SAS Snowflake Integration



4. Configure Snowflake ODBC with the following connection information

DataSource: Snowflake_IDDI

User: **Your Snowflake ID**

Password: **Your password**

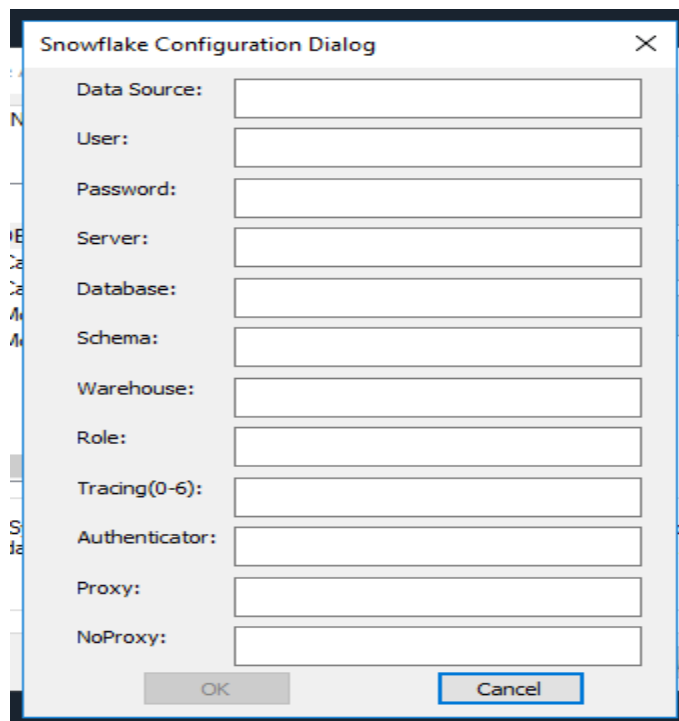
Server: txhhs.us-east-1-gov.aws.snowflakecomputing.com

Database: IDDI_DNA_DB

Schema: IDDI_DHUB

Warehouse: WH_IDDI_DNA_DB

ROLE: IDDI_DNA_DB_APP



SAS Snowflake Integration

Command to test the connection

```
libname mydblib odbc  
noprompt="uid=YOUR USER ID;pwd=YOUR PASSWORD;dsn=Snowflake_IDDI;"  
stringdates=yes;
```