



Weekly Flu Surveillance Report

Week 10- March 5th- March 11th

Disclaimer

Most cases of influenza are not reportable in the state of Texas, thus the data in this report was collected from hospitals, clinics, and schools throughout the region who have agreed to voluntarily submit data.

Definitions

ILI: Influenza-Like Illness. This is an illness that resembles the flu, but has not been confirmed. **Rapid:** These tests are typically done in-house to quickly test for influenza. **PCR:** These tests are generally more precise than rapid tests and are performed at the DSHS state lab and many commercial labs to confirm a case of influenza.

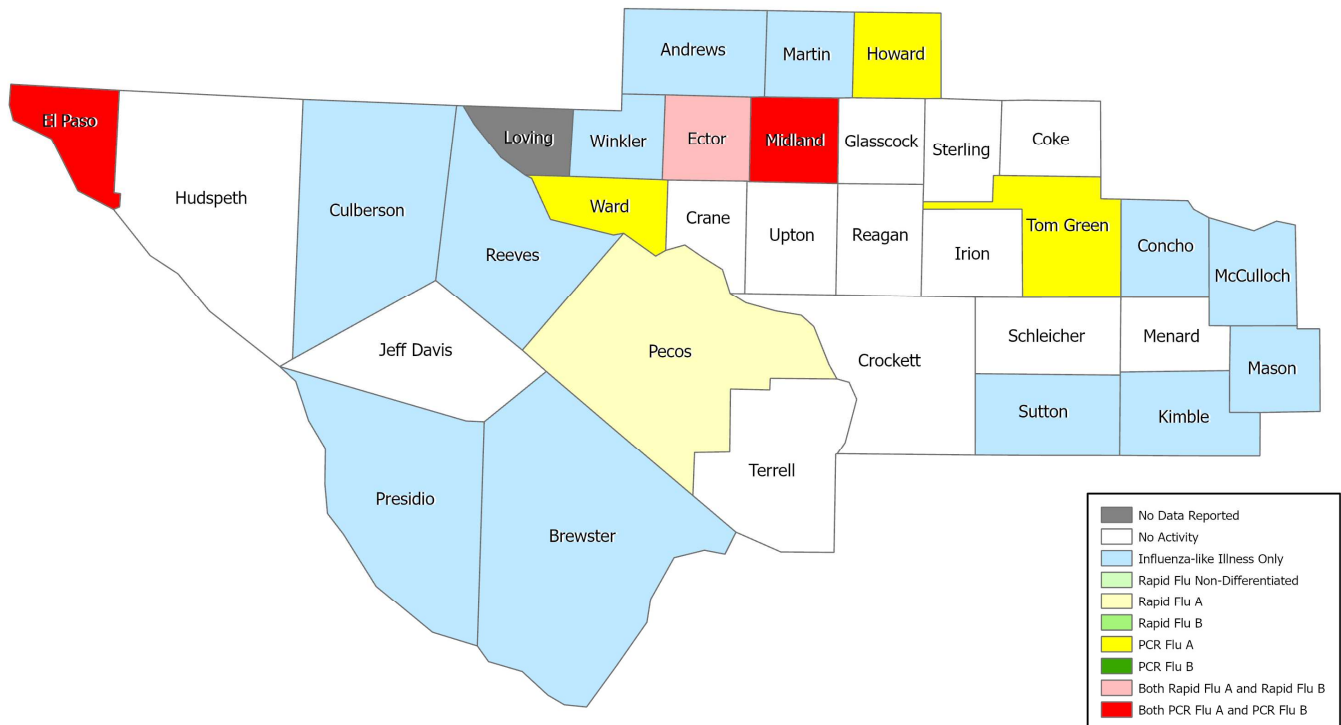
Summary Data

Condition	Week 10	Week 09	Week 08
Number of Counties Reporting (36 total)	↓ 35	36	35
Number of Counties Reporting ILI	↓ 15	16	17
Number of Counties Reporting High Levels of ILI*	↓ 1	4	8
Number of Counties Reporting Flu A	↓ 7	8	7
Number of Counties Reporting Flu B	↑ 5	3	7
Number of Counties Reporting Flu A & Flu B	↑ 5	3	3

The arrows represent changes from the previous week. A sideways arrow means there was no change in that condition.

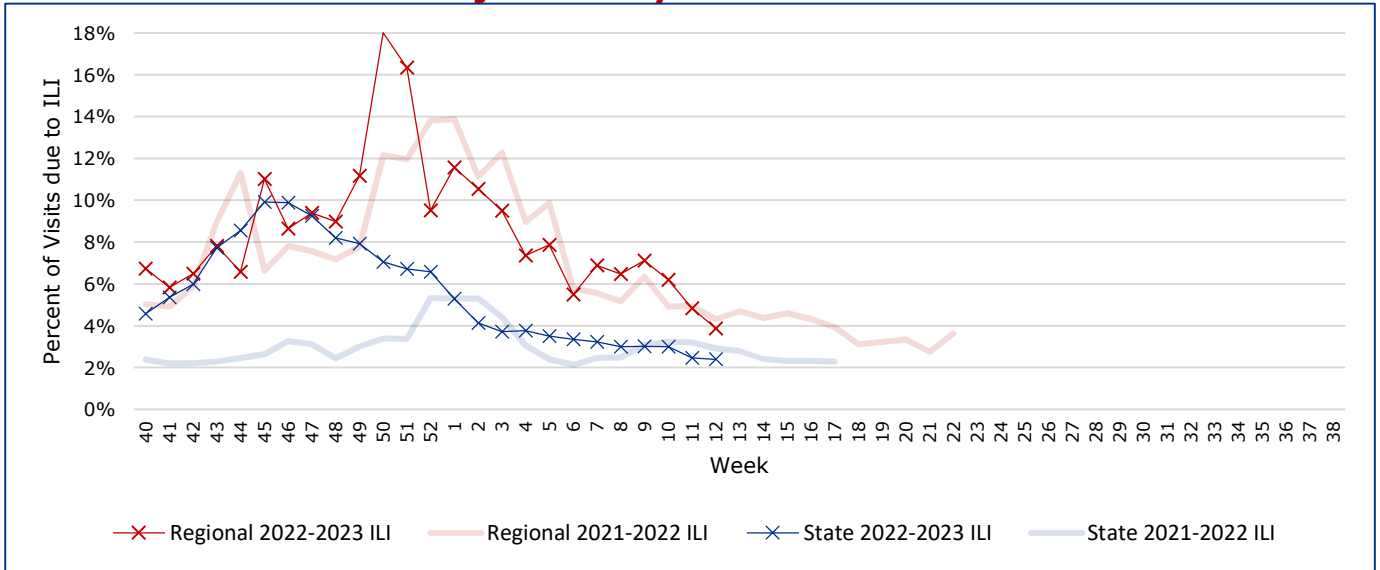
*Counties with total percent of visits due to ILI above 4.0% for the week are considered to have high/abnormal levels.

Map of Regional Flu Activity



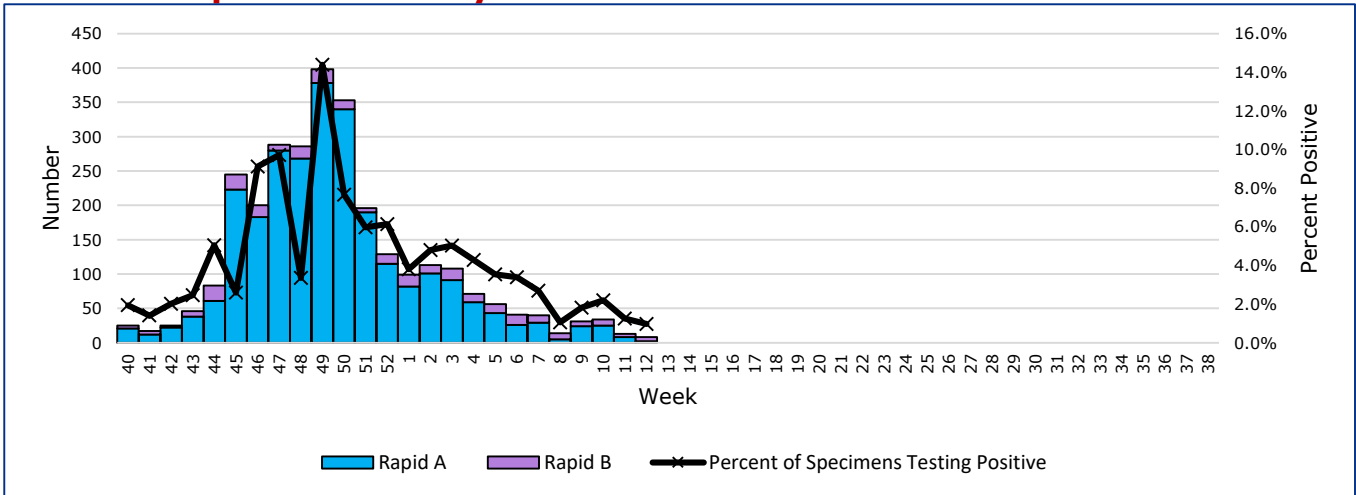
The map above depicts the previous week's reports of flu or influenza-like illness activity in each county. The legend on the bottom right of the map describes the meaning of each color.

Influenza-Like Illness Projections by Week



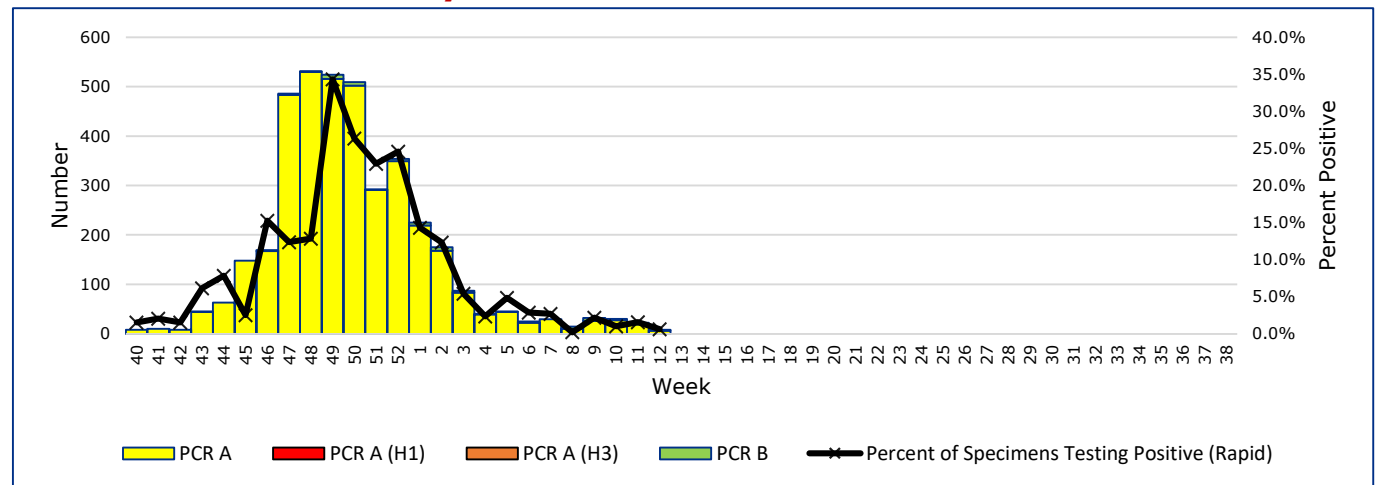
This chart documents the percentage of patient visits that were due to ILI at hospitals and clinics around the region, excluding confirmed COVID cases. It compares our region's data with the state's data and also compares to last flu season.

Positive Rapid Flu Tests by Week



This chart documents the number of rapid tests that have come back positive for flu A and flu B each week throughout the region.

Positive PCR Flu Tests by Week

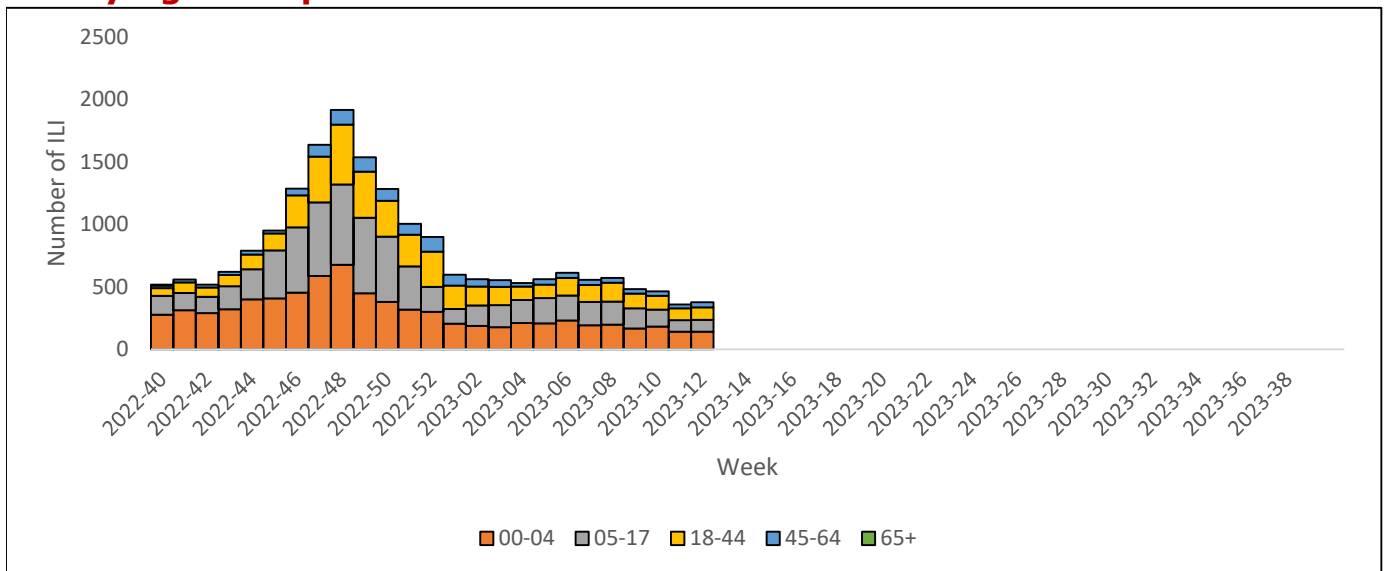


This chart documents the number of PCR tests that have come back positive for flu A and flu B each week throughout the region.

Flu Data by County

County	Week 10				Week 09				Week 08			
	Patient Visits	% with ILI	Flu A	Flu B	Patient Visits	% with ILI	Flu A	Flu B	Patient Visits	% with ILI	Flu A	Flu B
Andrews	651	10%	0	0	715	10%	4	1	522	16%	0	0
Brewster	95	0%	0	0	103	0%	0	0	72	0%	0	0
Coke	6	0%	0	0	9	0%	0	0	2	0%	0	0
Concho	21	0%	0	0	18	0%	0	0	22	0%	0	0
Crane	35	0%	0	0	53	0%	0	0	24	0%	0	0
Crockett	8	0%	0	0	8	0%	0	0	12	0%	0	0
Culberson	5	0%	0	0	7	0%	0	0	7	0%	0	0
Ector	6084	10%	15	9	5842	11%	10	5	5722	11%	7	8
El Paso	9869	0%	5	2	9569	0%	2	1	10042	0%	0	0
Glasscock	3	0%	0	0	16	6%	0	0	12	8%	0	0
Howard	524	4%	1	0	525	3%	0	0	491	5%	2	0
Hudspeth	24	0%	0	0	20	0%	0	0	23	0%	0	0
Irion	1	0%	0	0	1	0%	0	0	2	0%	0	0
Jeff Davis	10	0%	0	0	26	0%	0	0	17	0%	0	0
Kimble	145	10%	0	0	146	8%	0	0	165	10%	0	0
Loving	0		0	0	5	0%	0	0	0		0	0
McCulloch	31	45%	0	0	57	70%	0	1	60	87%	0	4
Martin	253	9%	0	0	167	7%	0	0	184	9%	1	0
Mason	41	0%	0	0	35	0%	0	0	20	0%	0	0
Menard	12	0%	0	0	11	0%	0	0	7	0%	0	0
Midland	3100	11%	4	1	2975	13%	4	1	2930	14%	1	0
Pecos	982	12%	16	0	889	13%	11	0	923	12%	2	0
Presidio	31	0%	0	0	23	0%	0	0	46	0%	0	0
Reagan	28	0%	0	0	23	0%	0	0	14	0%	0	0
Reeves	168	0%	0	0	140	0%	0	0	165	0%	0	0
Schleicher	5	0%	0	0	4	0%	0	0	2	0%	0	0
Sterling	4	0%	0	0	2	0%	0	0	1	0%	0	0
Sutton	18	0%	0	0	17	0%	0	0	20	0%	0	0
Terrell	7	0%	0	0	7	0%	0	0	6	0%	0	0
Tom Green	1348	3%	10	0	1338	3%	16	3	37	0%	0	0
Upton	39	0%	0	0	98	13%	2	0	110	9%	1	0
Ward	708	36%	1	0	722	38%	1	0	129	0%	0	0
Winkler	74	1%	0	0	336	13%	0	1	326	13%	1	1
Total	24636	6.6%	52	12	24211	7.5%	50	13	22413	6.4%	15	13

ILI by Age Group



This chart documents the number of ILI admissions in hospitals around the region by age group from syndromic surveillance data. It excludes ILI with a confirmed COVID-19 discharge diagnosis.

Flu-Associated Pediatric Deaths & Outbreaks

No flu-associated pediatric deaths have been reported in PHR 9/10 this flu season. In PHR 9/10, no flu outbreaks have been reported for Week 10.

For a more comprehensive look at respiratory illnesses circulating throughout Texas, please visit: <https://www.dshs.texas.gov/2022-2023-texas-influenza-surveillance-activity> and select the "Current Extended Flu Activity Report"