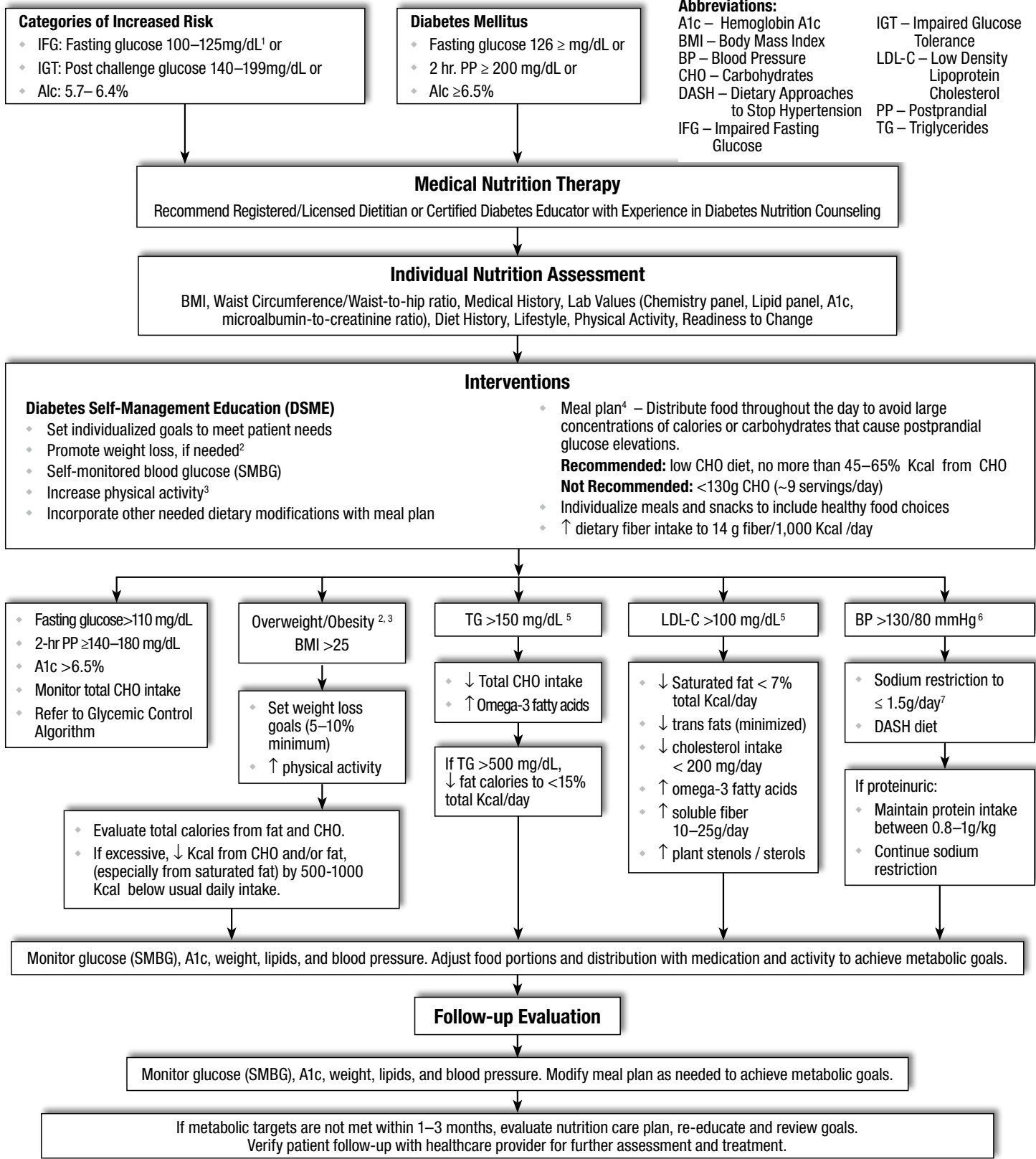


Diabetes Medical Nutrition Therapy and Prevention Algorithm For Adults



Footnotes

¹ This test requires the use of a glucose load containing the equivalent of 75 g anhydrous glucose dissolved in water. ² Refer to Weight Loss Algorithm

³ Refer to Exercise Algorithm ⁴ ADA. Standards of Medical Care in Diabetes – 2010. *Diabetes Care.* 2010;33 (suppl 1): S11-S61. ⁵ Refer to Lipid Treatment Algorithm

⁶ Refer to Hypertension Algorithm ⁷ Dietary Guidelines for Americans, 2005. Available online at <http://www.health.gov/dietaryguidelines/dga2005/document/html/chapter8.htm> Accessed on July 22, 2010.