

**2008 Annual Report**

**TB/HIV/STD Epidemiology and Surveillance Branch**

**Texas HIV/STD  
Surveillance Report**



The Texas HIV/STD Surveillance Report is an annual report generated by the Texas Department of State Health Services, HIV/STD Epidemiology and Surveillance Branch.

This report describes cases reported to the Texas Department of State Health Services Surveillance Program through December 31, 2008.

Data is generally presented by Year of Report, although some sections may contain data by Year of Diagnosis, please read titles and footnotes carefully. Population numbers used to calculate rates are provided by the Texas State Data Center, Population Estimates and Projections Program.

Texas Department of State Health Services  
TB/HIV/STD Epidemiology and Surveillance Branch  
PO Box 149347  
Austin, TX 78714-9347

TB/HIV/STD Epidemiology and Surveillance Branch  
(512)533-3000

## TABLE OF CONTENTS

Table of Contents.....	3
Reference: Terms and Resources .....	4
Reference: Public Health Regions in Texas .....	6
HIV/AIDS Geographic Data Summary .....	7
o HIV/AIDS by Public Health Region.....	7
o HIV/AIDS by County of Residence .....	8
o HIV/AIDS by City of Residence .....	10
HIV/AIDS Trend Data Summary.....	11
HIV/AIDS Demographic Data Summary .....	14
o HIV .....	14
o AIDS.....	16
o HIV/AIDS by National Origin.....	18
HIV/AIDS by Mode of Exposure .....	19
STD Geographic Summary .....	21
o STDs by Public Health Region .....	21
o Chlamydia and Gonorrhea by County of Residence .....	22
o Syphilis Cases by County of Residence .....	24
o STDs by City of Residence.....	26
STD Trend Data Summary.....	27
STD Demographic Data Summary .....	29
o Chlamydia .....	30
o Gonorrhea .....	30
o Syphilis.....	31

## Reference: Terms and Resources

### Definitions:

AIDS and HIV infection, chancroid, chlamydia, gonorrhea, and syphilis are defined by the Centers for Disease Control and Prevention of the United States Public Health Service. The publication designating the most current definition may be requested from:

*Texas Department of State Health Services  
TB/HIV/STD Epidemiology and Surveillance Branch  
PO Box 149347  
Austin, Texas 78714-9347*

### Reporting Rules:

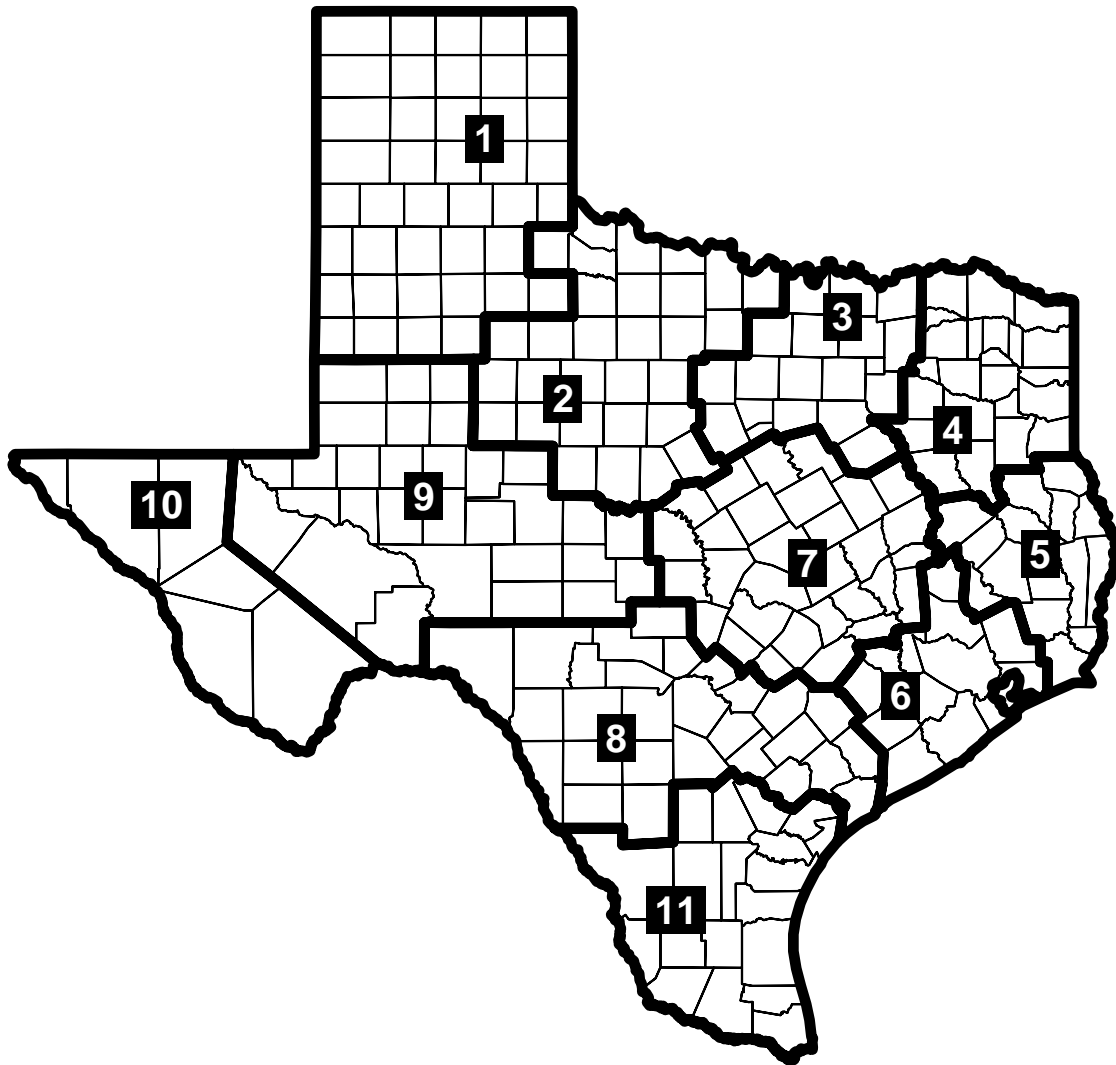
The rules and regulations for reporting sexually transmitted diseases have been adopted in the Texas Administrative Code, Chapter 97. The provisions for this chapter are issued under the Communicable Disease Prevention and Control Act, Health and Safety Code, Chapter 81, which provides the Board of Health with the authority to adopt rules concerning the reporting of communicable diseases; and §12.001, which provides the Texas Board of Health with the authority to adopt rules for the performance of every duty imposed by law on the Texas Board of Health, the Texas Department of State Health Services, and the Commissioner of Health. A copy of the rules can be obtained from the Texas Department of State Health Services at the address above, or from the World Wide Web at:

<http://www.dshs.state.tx.us/hivstd/policy/laws.shtm>

The *Texas HIV/STD Surveillance Report* can be obtained from the World Wide Web at:

<http://www.dshs.state.tx.us/hivstd/stats/default.shtm#surveillance>

Information on how to report HIV/AIDS and STD cases can be obtained by calling your local or regional health department, or by calling 1-800-705-8868.



Texas Public Health Regions

## HIV/AIDS Geographic Data Summary

### HIV/AIDS Cases and People Living with HIV by Public Health Region, 2007 and 2008

Public Health Region	HIV (Non-AIDS)			AIDS					People Living with HIV/AIDS
	Cumulative Reported Cases*	2007 Cases	2008 Cases	Cumulative Reported Cases**	2007 Cases	2007 Rate***	2008 Cases	2008 Rate***	
Region 1	373	25	51	1,049	16	1.9	48	5.8	808
Region 2	177	22	14	655	23	4.1	36	6.5	431
Region 3	9,136	1,020	966	22,218	808	12.5	866	13.1	19,888
Region 4	619	76	54	1,607	52	4.8	86	7.9	1,438
Region 5	643	119	102	1,549	103	13.4	91	11.8	1,343
Region 6	9,391	1,080	1,175	28,220	1,021	18.2	1,020	17.8	21,221
Region 7	2,365	282	295	6,611	252	9.4	238	8.7	5,519
Region 8	1,969	246	222	5,810	250	10.4	218	9.0	4,783
Region 9	193	14	31	614	19	3.5	17	3.1	457
Region 10	604	151	75	1,691	130	16.8	63	8.0	1,564
Region 11	975	106	120	2,706	131	6.4	97	4.6	2,388
TDCJ ‡	2,148	276	248	2,967	100		85		3,860
<b>State Total</b>	<b>28,593</b>	<b>3,417</b>	<b>3,353</b>	<b>75,697</b>	<b>2,905</b>	<b>12.2</b>	<b>2,865</b>	<b>11.8</b>	<b>63,700</b>

\* Cumulative HIV cases are pediatric HIV infections reported since 1994 and adult/adolescent HIV infections reported since 1999 that have not progressed to AIDS.

\*\* Cumulative AIDS data includes all cases reported since 1980, including cases originally reported as HIV which have progressed to AIDS.

\*\*\* Rates represent cases per 100,000 population.

‡ Texas Department of Criminal Justice.

# HIV/AIDS Cases and People Living with HIV by County of Residence, 2008

County	HIV (Non-AIDS)		AIDS		People Living with HIV/AIDS
	Cumulative Cases*	2008 Cases	Cumulative Cases*	2008 Cases	
Anderson	44	3	77	6	77
Andrews	1	1	8	-	3
Angelina	50	4	118	3	106
Aransas	7	1	32	2	20
Archer	-	-	4	1	2
Armstrong	-	-	1	-	-
Atascosa	10	-	28	4	28
Austin	11	4	22	5	28
Bailey	1	-	2	-	1
Bandera	3	-	10	-	7
Bastrop	35	4	94	7	79
Baylor	1	-	1	-	1
Bee	8	-	33	2	22
Bell	157	29	321	8	317
Bexar	1,755	203	5,206	196	4,284
Blanco	-	-	5	-	3
Borden	-	-	-	-	-
Bosque	2	-	13	-	10
Bowie	55	1	195	6	143
Brazoria	100	14	356	21	265
Brazos	134	24	247	7	246
Brewster	-	-	6	-	1
Briscoe	-	-	1	-	-
Brooks	2	-	8	-	7
Brown	17	2	38	7	42
Burleson	9	1	19	-	13
Burnet	13	2	33	2	31
Caldwell	15	4	43	2	42
Calhoun	3	-	22	1	14
Callahan	1	-	7	1	6
Cameron	227	23	566	28	570
Camp	4	-	13	1	13
Carson	3	-	6	-	5
Cass	9	1	36	2	30
Castro	1	-	4	-	3
Chambers	5	1	17	2	11
Cherokee	35	3	71	8	80
Childress	1	-	9	-	2
Clay	2	1	6	-	5
Cochran	-	-	1	-	-
Coke	1	-	2	-	1
Coleman	2	-	8	-	8
Collin	404	61	549	56	784
Collingsworth	1	-	-	-	1
Colorado	11	2	21	1	19
Comal	36	4	77	3	77
Comanche	3	-	9	-	6
Concho	2	-	4	-	3
Cooke	5	-	32	-	20
Coryell	20	3	43	5	42
Cottle	-	-	-	-	-
Crane	-	-	1	-	-
Crockett	-	-	3	-	1
Crosby	-	-	5	-	2
Culberson	1	-	1	-	1
Dallam	3	2	9	-	7
Dallas	6,241	620	15,749	585	13,770
Dawson	4	-	7	-	8
Deaf Smith	8	2	9	2	11
Delta	1	-	1	1	2
Denton	301	43	617	34	636
De Witt	5	-	13	-	8
Dickens	-	-	3	-	-
Dimmit	3	1	8	-	5

County	HIV (Non-AIDS)		AIDS		People Living with HIV/AIDS
	Cumulative Cases*	2008 Cases	Cumulative Cases*	2008 Cases	
Donley	3	-	3	1	4
Duval	4	-	9	-	10
Eastland	3	-	13	-	8
Ector	56	13	196	7	138
Edwards	-	-	3	-	1
Ellis	66	16	141	3	131
El Paso	600	73	1,678	63	1,556
Erath	9	-	19	-	14
Falls	8	1	15	1	13
Fannin	11	2	22	1	22
Fayette	9	1	11	1	17
Fisher	-	-	5	1	4
Floyd	-	-	5	-	1
Foard	-	-	1	-	-
Fort Bend	235	34	604	42	551
Franklin	1	-	2	-	2
Freestone	7	-	22	1	16
Frio	4	-	11	1	10
Gaines	2	-	2	-	1
Galveston	220	27	962	36	640
Garza	5	3	9	4	9
Gillespie	3	-	8	-	5
Glasscock	-	-	-	-	-
Goliad	1	-	2	-	3
Gonzales	7	-	15	-	14
Gray	6	1	12	1	8
Grayson	39	4	135	6	93
Gregg	146	6	312	20	318
Grimes	17	1	36	5	34
Guadalupe	32	3	51	2	58
Hale	15	-	30	1	28
Hall	2	-	1	-	2
Hamilton	3	-	8	-	7
Hansford	-	-	1	-	-
Hardeman	1	-	11	-	5
Hardin	23	5	48	2	38
Harris	8,496	1,041	25,501	858	19,040
Harrison	37	5	93	5	82
Hartley	-	-	-	-	-
Haskell	6	1	8	-	9
Hays	55	11	120	4	122
Hemphill	-	-	1	-	1
Henderson	26	2	79	5	63
Hidalgo	353	58	726	33	802
Hill	16	2	33	-	29
Hockley	2	-	15	-	4
Hood	20	3	40	2	42
Hopkins	11	4	46	5	35
Houston	30	4	53	3	63
Howard	26	4	50	-	46
Hudspeth	1	1	-	-	1
Hunt	42	8	112	7	94
Hutchinson	1	-	15	2	7
Irion	-	-	-	-	-
Jack	-	-	9	1	4
Jackson	3	-	13	-	6
Jasper	6	2	36	4	22
Jeff Davis	1	1	1	-	1
Jefferson	395	68	807	58	755
Jim Hogg	1	-	4	-	1
Jim Wells	5	-	30	-	17
Johnson	63	6	146	8	126
Jones	2	-	12	-	7
Karnes	3	1	5	1	6

\* Cumulative HIV data includes pediatric HIV infections reported since 1994 and adult/adolescent HIV infections reported since 1999 that have not progressed to AIDS.

\*\* Cumulative AIDS data includes all cases reported since 1980, including cases originally reported as HIV which have progressed to AIDS.

# HIV/AIDS Cases and People Living with HIV by County of Residence, 2008

County	HIV (Non-AIDS)		AIDS		People Living with HIV/AIDS
	Cumulative Cases*	2008 Cases	Cumulative Cases*	2008 Cases	
Kaufman	65	11	127	6	123
Kendall	5	-	16	1	13
Kenedy	-	-	-	-	-
Kent	-	-	-	-	-
Kerr	12	-	41	1	25
Kimble	-	-	1	-	1
King	-	-	-	-	-
Kinney	1	-	4	1	2
Kleberg	4	1	41	-	18
Knox	2	-	-	-	2
Lamar	19	-	58	-	48
Lamb	3	-	10	-	8
Lampasas	5	-	12	-	5
La Salle	-	-	6	-	3
Lavaca	7	-	7	-	13
Lee	1	-	17	1	13
Leon	6	1	14	1	13
Liberty	40	4	104	9	87
Limestone	8	-	22	1	21
Lipscomb	-	-	1	-	-
Live Oak	1	-	6	-	4
Llano	4	-	10	-	9
Loving	-	-	-	-	-
Lubbock	139	10	412	8	310
Lynn	4	1	2	-	4
McCulloch	2	1	9	-	4
McLennan	156	14	385	9	309
McMullen	-	-	-	-	-
Madison	5	-	24	1	16
Marion	9	1	12	-	18
Martin	1	-	4	-	2
Mason	1	-	1	-	1
Matagorda	25	5	48	1	45
Maverick	15	1	52	-	40
Medina	8	2	27	-	19
Menard	-	-	1	-	1
Midland	49	3	170	5	127
Milam	11	1	35	2	25
Mills	-	-	-	-	-
Mitchell	1	-	7	-	4
Montague	2	-	16	2	7
Montgomery	168	28	391	24	351
Moore	4	1	14	2	12
Morris	5	-	16	2	12
Motley	-	-	-	-	-
Nacogdoches	36	7	100	7	88
Navarro	32	8	77	4	67
Newton	2	1	9	-	7
Nolan	4	-	17	4	13
Nueces	173	15	785	20	503
Ochiltree	2	2	2	-	3
Oldham	-	-	-	-	-
Orange	35	7	127	7	88
Palo Pinto	7	2	16	-	19
Panola	9	-	23	1	21
Parker	26	-	81	3	72
Parmer	3	3	7	-	8
Pecos	1	-	11	-	5
Polk	25	1	77	3	52
Potter	143	20	385	23	315
Presidio	1	-	5	-	4
Rains	-	-	7	-	3
Randall	13	3	57	3	32
Reagan	-	-	-	-	-

County	HIV (Non-AIDS)		AIDS		People Living with HIV/AIDS
	Cumulative Cases*	2008 Cases	Cumulative Cases*	2008 Cases	
Real	-	-	1	-	1
Red River	4	-	10	-	7
Reeves	5	1	18	1	13
Refugio	-	-	3	-	1
Roberts	-	-	-	-	-
Robertson	8	-	32	1	26
Rockwall	22	-	40	2	43
Runnels	1	-	8	-	5
Rusk	26	6	52	3	54
Sabine	4	-	13	-	9
San Augustine	5	2	18	-	9
San Jacinto	7	-	27	1	17
San Patricio	18	3	77	1	46
San Saba	1	-	4	1	3
Schleicher	-	-	3	-	1
Scurry	-	-	6	1	3
Shackelford	-	-	-	-	-
Shelby	11	-	61	2	43
Sherman	4	2	3	-	4
Smith	134	16	341	15	318
Somervell	-	-	4	-	2
Starr	18	1	30	1	31
Stephens	2	1	3	-	3
Sterling	-	-	-	-	-
Stonewall	-	-	1	-	-
Sutton	1	-	1	-	2
Swisher	2	-	4	-	4
Tarrant	1,770	181	4,279	148	3,804
Taylor	60	6	203	9	141
Terrell	-	-	-	-	-
Terry	1	1	6	1	6
Throckmorton	-	-	1	-	-
Titus	8	-	37	-	29
Tom Green	38	8	102	3	87
Travis	1,502	166	4,709	159	3,739
Trinity	9	-	29	1	25
Tyler	5	1	26	-	21
Upshur	12	1	41	1	29
Upton	1	-	-	-	1
Uvalde	3	-	19	2	11
Val Verde	4	-	30	2	15
Van Zandt	14	4	44	3	25
Victoria	38	5	103	-	88
Walker	25	5	78	13	61
Waller	25	6	62	4	64
Ward	2	-	10	-	7
Washington	13	4	21	-	22
Webb	140	17	323	9	299
Wharton	30	4	54	4	59
Wheeler	1	-	1	-	2
Wichita	59	3	219	9	126
Wilbarger	6	-	28	-	17
Willacy	10	-	27	-	30
Williamson	145	26	263	19	297
Wilson	5	2	23	2	18
Winkler	-	-	10	1	4
Wise	13	1	32	1	26
Wood	10	1	41	2	29
Yoakum	2	-	3	-	4
Young	2	-	14	-	3
Zapata	4	1	6	1	7
Zavala	3	-	9	1	9
TDCJ ‡	2,148	248	2,967	85	3,860
<b>Total</b>	<b>28,593</b>	<b>3,353</b>	<b>75,697</b>	<b>2,865</b>	<b>63,700</b>

\* Cumulative HIV data includes pediatric HIV infections reported since 1994 and adult/adolescent HIV infections reported since 1999 that have not progressed to AIDS.

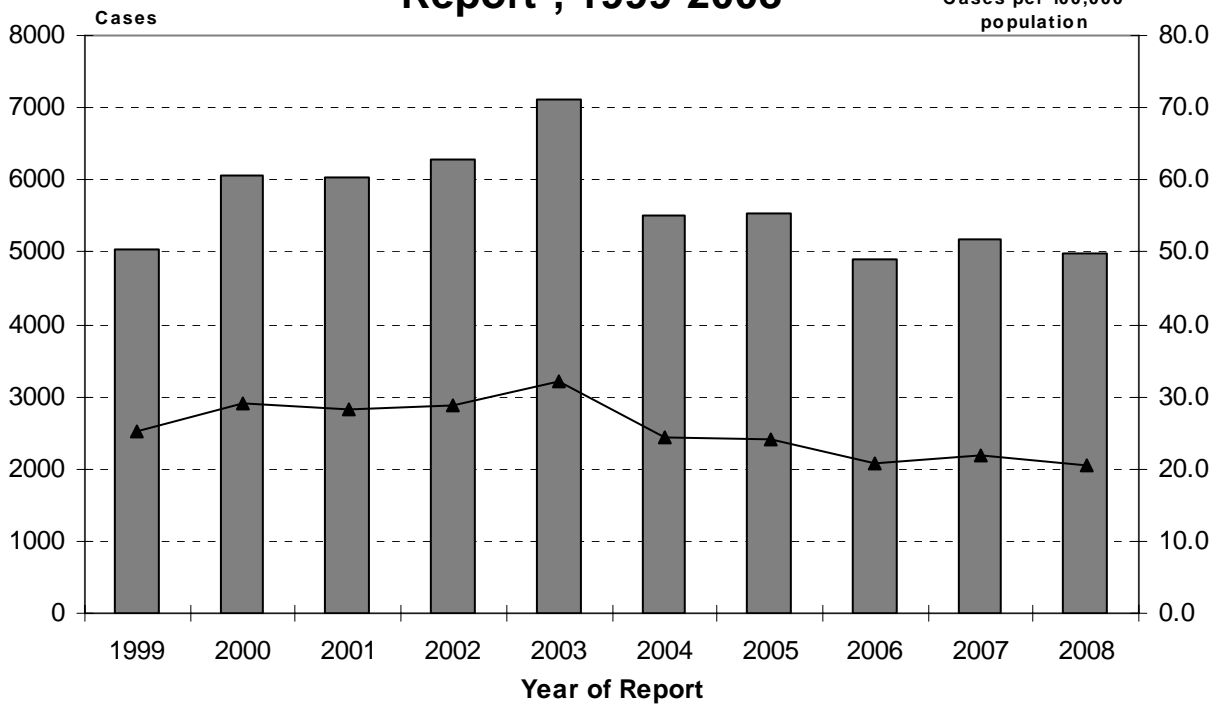
\*\* Cumulative AIDS data includes all cases reported since 1980, including cases originally reported as HIV which have progressed to AIDS.

‡ Texas Department of Criminal Justice.

<b>HIV/AIDS Cases by City of Residence, 2008</b>		
<b>City of Residence</b>	<b>HIV (Non-AIDS)</b>	<b>AIDS</b>
Houston	942	772
Dallas	493	495
San Antonio	197	189
TDCJ	248	85
Austin	155	144
Fort Worth	94	78
El Paso	70	59
Arlington	41	35
Beaumont	39	37
Irving	30	29
Amarillo	23	26
Port Arthur	24	18
Humble	20	20
Garland	25	13
Plano	15	21
Katy	20	15
Corpus Christi	15	19
Mcallen	22	11
Grand Prairie	19	13
Spring	13	18
Tyler	14	14
Galveston	12	15
Richardson	14	13
Mesquite	13	12
Laredo	16	8
Brownsville	12	11
Conroe	11	12
Longview	5	17
Bryan	15	6
Mckinney	14	7
Waco	12	8
Baytown	7	12
Odessa	12	7
Lubbock	10	8
Round Rock	13	5
Cedar Hill	7	9
De Soto	12	4
Killeen	14	2
Lewisville	8	8
Missouri City	9	7
Richmond	7	9
Eules	11	4
Frisco	10	5
Harlingen	8	7
Texas City	9	6
Abilene	5	9
Huntsville	5	9
Nacogdoches	7	7
Pasadena	7	7
<b>State Total</b>	<b>3,353</b>	<b>2,865</b>

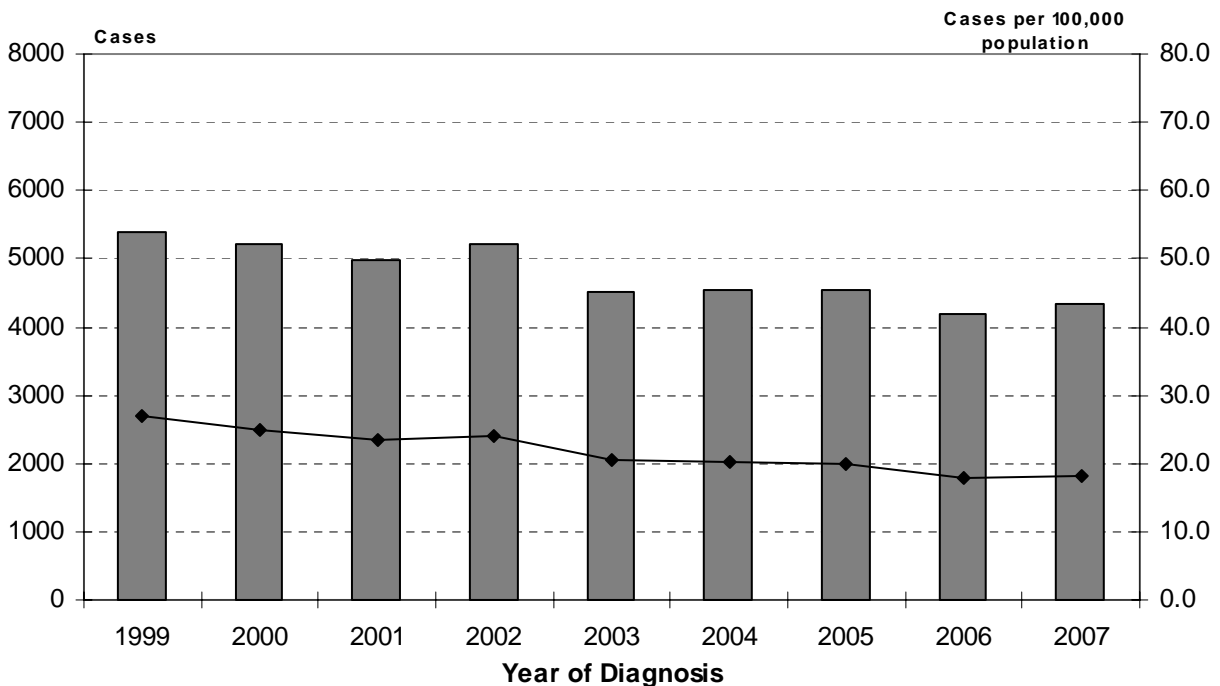
\* Top cities listed by total HIV/AIDS cases reported.

**Texas New HIV/AIDS Cases and Case Rates by Year of Report\*, 1999-2008**



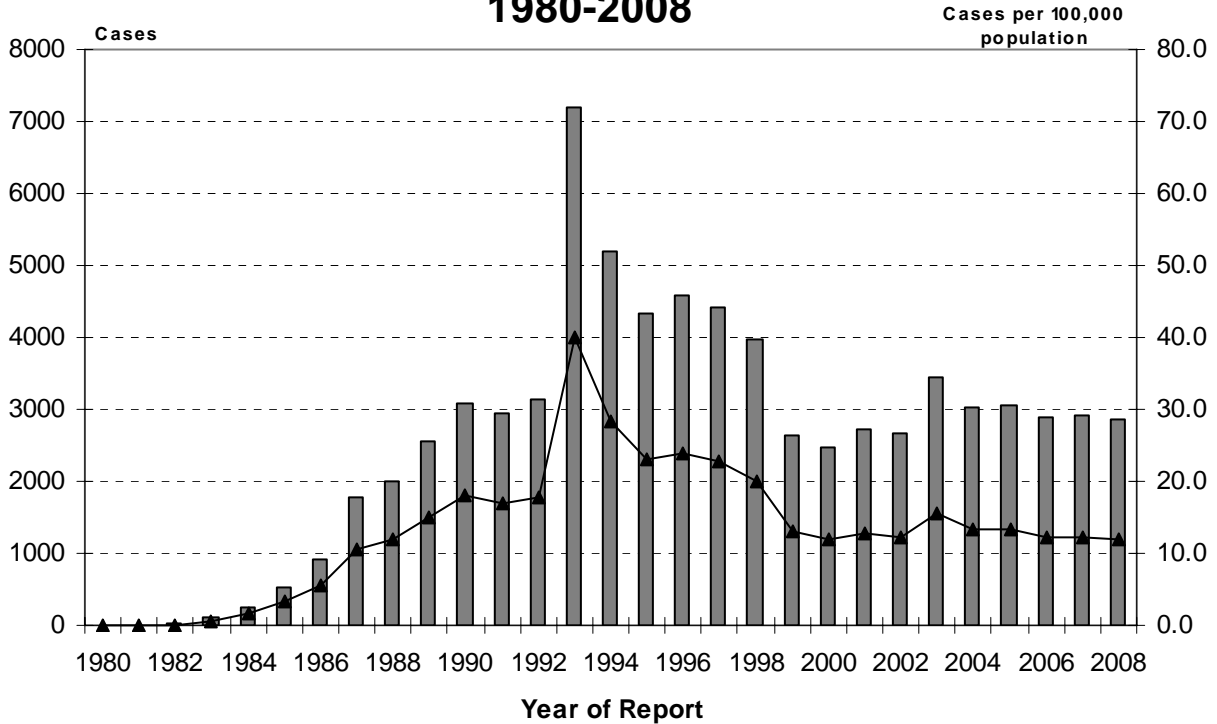
\* Data by Year of Report are affected by reporting artifacts and changes in case definition - cases may be reported in a later year than the year diagnosed. New HIV/AIDS cases include all new cases reported regardless of the stage of disease.

**Texas New HIV/AIDS Cases and Case Rates by Year of Diagnosis\*, 1999-2007**



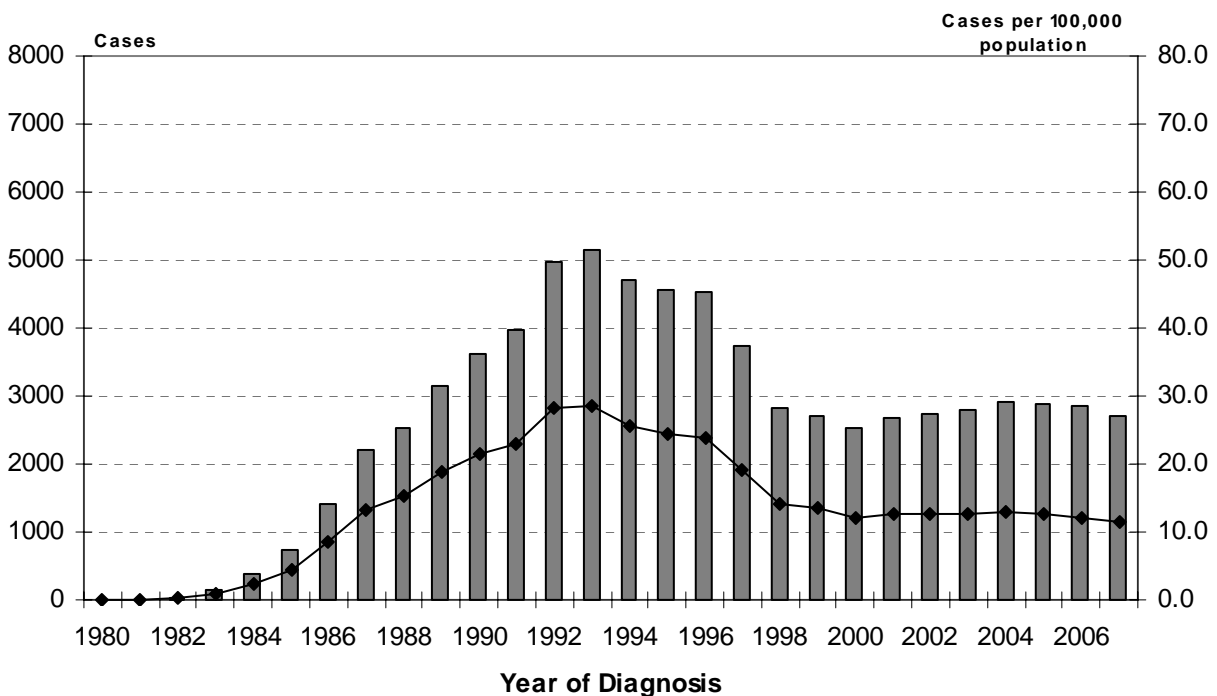
\* Data by Year of Diagnosis are affected by reporting delay thus data from the most recent year are not presented. New HIV/AIDS cases include all new cases diagnosed regardless of the stage of disease.

## Texas AIDS Cases and Case Rates by Year of Report\*, 1980-2008



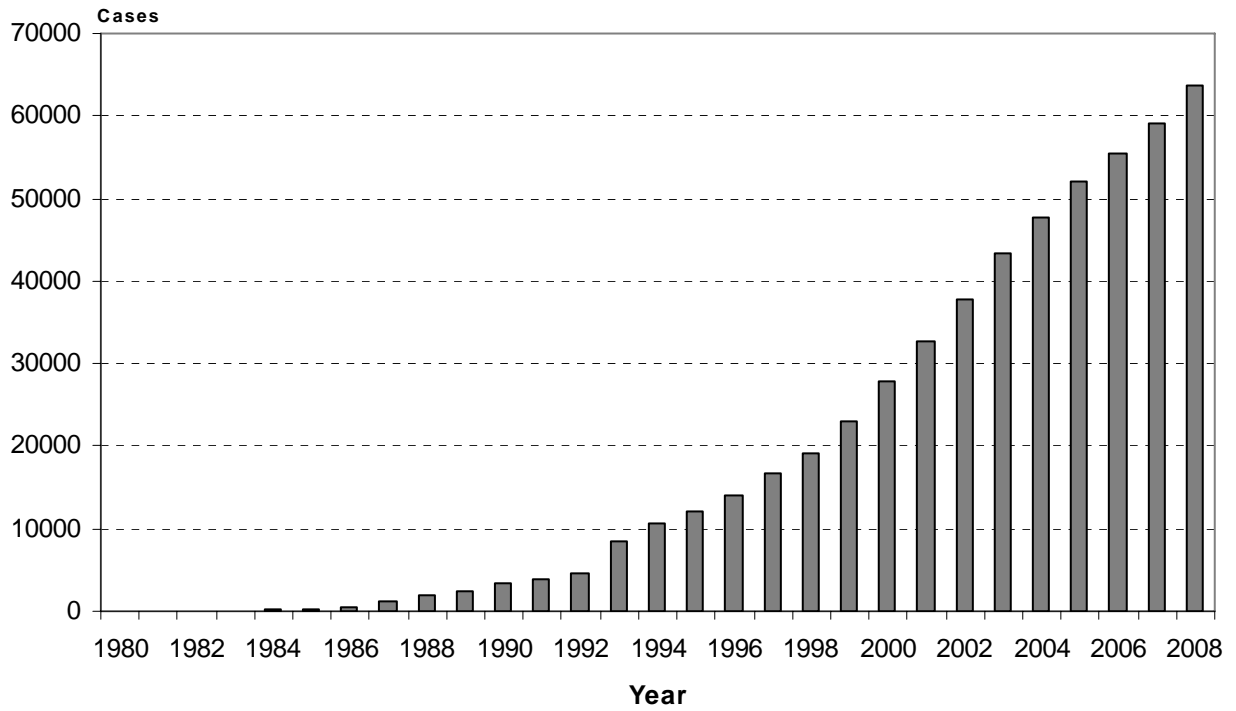
\* Data by Year of Report are affected by reporting artifacts and changes in case definition.

## Texas AIDS Cases and Case Rates by Year of Diagnosis\*, 1980-2007



\* Data by Year of Diagnosis are affected by reporting delay thus data from the most recent year are not presented.

## People Living With HIV/AIDS\* in Texas, 1980-2008



\* The number of people living with HIV/AIDS and reported to DSHS at the end of each calendar year.

# HIV/AIDS Demographic Data Summary

## HIV Cases by Age Group, Race/Ethnicity and Sex, 2008

Age Group	Male							Female							Unk Sex	Total	Percent
	White	African Amer.	Hisp.	Asian	Amer. Indian	Other/Unk	Total	White	African Amer.	Hisp.	Asian	Amer. Indian	Other/Unk	Total			
0 - 9	1	7	2	-	-	-	10	6	4	3	1	-	-	14	-	24	0.7%
10 - 14	-	2	1	-	-	-	3	-	3	-	-	-	-	3	-	6	0.2%
15 - 19	17	90	27	-	-	-	134	12	30	14	-	-	-	56	-	190	5.7%
20 - 24	91	211	138	7	-	3	450	18	85	28	2	-	-	133	-	583	17.4%
25 - 29	137	175	156	4	1	2	475	23	82	24	2	1	1	133	-	608	18.1%
30 - 34	99	127	132	7	-	2	367	25	63	23	-	-	3	114	-	481	14.3%
35 - 39	116	127	109	8	1	5	366	15	63	18	2	-	-	98	-	464	13.8%
40 - 44	106	123	71	5	-	6	311	13	47	12	1	-	2	75	-	386	11.5%
45+	184	169	82	4	2	3	444	45	88	29	1	1	3	167	-	611	18.2%
Unknown	-	-	-	-	-	-	-	-	-	-	-	-	-	-	-	-	0.0%
<b>Total</b>	<b>751</b>	<b>1,031</b>	<b>718</b>	<b>35</b>	<b>4</b>	<b>21</b>	<b>2,560</b>	<b>157</b>	<b>465</b>	<b>151</b>	<b>9</b>	<b>2</b>	<b>9</b>	<b>793</b>	<b>-</b>	<b>3,353</b>	
<b>Percent</b>	<b>29.3%</b>	<b>40.3%</b>	<b>28.0%</b>	<b>1.4%</b>	<b>0.2%</b>	<b>0.8%</b>		<b>19.8%</b>	<b>58.6%</b>	<b>19.0%</b>	<b>1.1%</b>	<b>0.3%</b>	<b>1.1%</b>				
<b>Percent Male</b>							<b>76.3%</b>	<b>Percent Female</b>							<b>23.7%</b>		

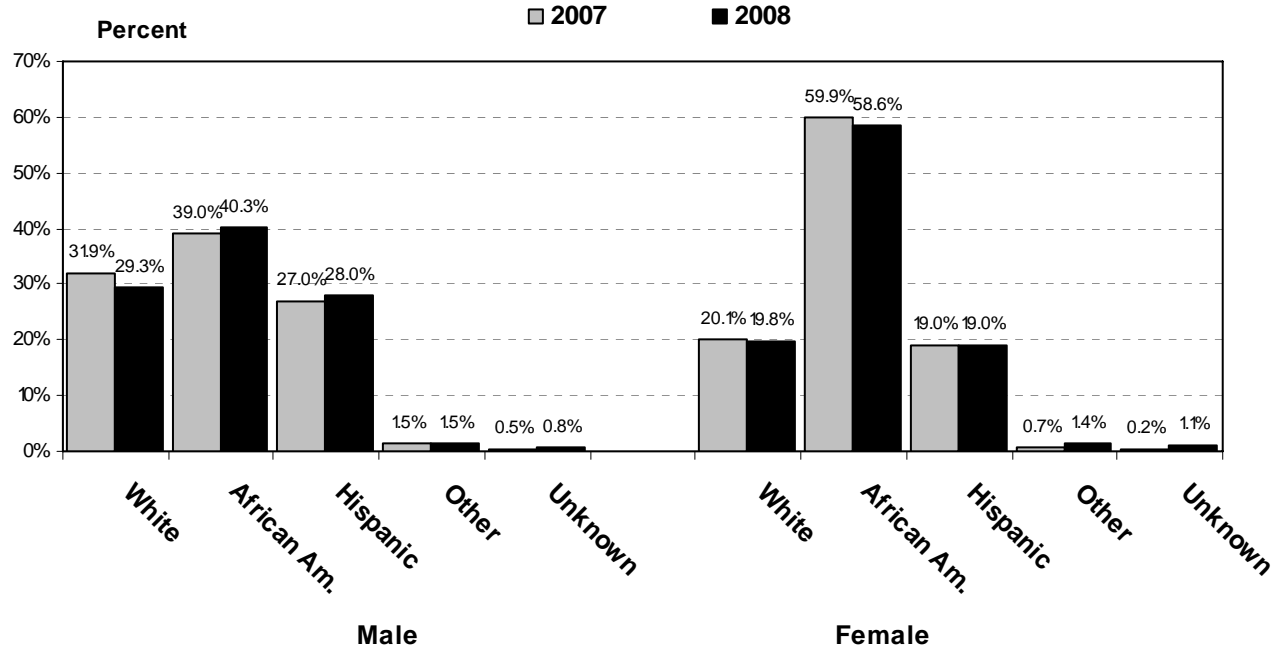
Total White	908	27.1%
Total African-American	1,496	44.6%
Total Hispanic	869	25.9%
Total Asian	44	1.3%
Total American Indian	6	0.2%
Total Unk. Race/Ethnicity	30	0.9%
<b>Total</b>	<b>3,353</b>	

## HIV Cases by Race/Ethnicity, Diagnosis Category and Sex, 2007 and 2008

Adult/Adolescent Race/Ethnicity	Cumulative Cases*			2007			2008		
	Male	Female	Total	Male	Female	Total	Male	Female	Total
White	8,336	1,429	9,765	833	160	993	750	151	901
African American	7,417	4,220	11,637	1,016	477	1,493	1,022	460	1,482
Hispanic	5,108	1,231	6,339	701	150	851	716	148	864
Asian	211	60	271	34	6	40	35	8	43
American Indian	32	14	46	5	-	5	4	2	6
Other/Unknown	57	28	85	14	2	16	21	9	30
<b>Adult Total</b>	<b>21,161</b>	<b>6,982</b>	<b>28,143</b>	<b>2,603</b>	<b>795</b>	<b>3,398</b>	<b>2,548</b>	<b>778</b>	<b>3,326</b>
<b>Pediatric Race/Ethnicity</b>									
White	53	34	87	1	2	3	1	6	7
African American	134	121	255	3	6	9	9	5	14
Hispanic	52	49	101	3	3	6	2	3	5
Asian	3	2	5	1	-	1	-	1	1
American Indian	1	-	1	-	-	-	-	-	-
Other/Unknown	-	1	1	-	-	-	-	-	-
<b>Pediatric Total</b>	<b>243</b>	<b>207</b>	<b>450</b>	<b>8</b>	<b>11</b>	<b>19</b>	<b>12</b>	<b>15</b>	<b>27</b>
<b>Statewide Total</b>	<b>21,404</b>	<b>7,189</b>	<b>28,593</b>	<b>2,611</b>	<b>806</b>	<b>3,417</b>	<b>2,560</b>	<b>793</b>	<b>3,353</b>

\* Cumulative HIV data includes pediatric HIV infections reported since 1994 and adult/adolescent HIV infections reported since 1999 that have not progressed to AIDS.

## Adult/Adolescent HIV Case Percentages by Race/Ethnicity and Sex, 2007-2008



## AIDS Cases by Age Group, Race/Ethnicity and Sex, 2008

Age Group	Male							Female							Unk Sex	Total	Percent
	White	African Amer.	Hisp.	Asian	Amer. Indian	Other/Unk	Total	White	African Amer.	Hisp.	Asian	Amer. Indian	Other/Unk	Total			
0 - 9	-	-	-	-	-	-	-	1	1	-	-	-	-	2	-	2	0.1%
10 - 14	-	2	-	-	-	-	2	-	-	1	-	-	-	1	-	3	0.1%
15 - 19	3	17	8	-	-	-	28	1	12	4	-	-	-	17	-	45	1.6%
20 - 24	15	61	49	-	-	-	125	11	28	7	-	-	-	46	-	171	6.0%
25 - 29	62	79	96	2	1	3	243	11	61	18	-	-	-	90	-	333	11.6%
30 - 34	70	117	125	3	-	1	316	21	58	28	-	-	-	107	-	423	14.8%
35 - 39	130	92	152	9	2	-	385	18	79	22	1	-	-	120	-	505	17.6%
40 - 44	145	148	105	2	1	3	404	14	61	17	1	1	-	94	-	498	17.4%
45+	253	254	148	6	3	-	664	46	138	35	2	-	-	221	-	885	30.9%
Unknown	-	-	-	-	-	-	-	-	-	-	-	-	-	-	-	-	0.0%
<b>Total</b>	<b>678</b>	<b>770</b>	<b>683</b>	<b>22</b>	<b>7</b>	<b>7</b>	<b>2,167</b>	<b>123</b>	<b>438</b>	<b>132</b>	<b>4</b>	<b>1</b>	<b>-</b>	<b>698</b>	<b>-</b>	<b>2,865</b>	
<b>Percent</b>	<b>31.3%</b>	<b>35.5%</b>	<b>31.5%</b>	<b>1.0%</b>	<b>0.3%</b>	<b>0.3%</b>		<b>17.6%</b>	<b>62.8%</b>	<b>18.9%</b>	<b>0.6%</b>	<b>0.1%</b>	<b>0.0%</b>				

Percent Male 75.6%

Percent Female 24.4%

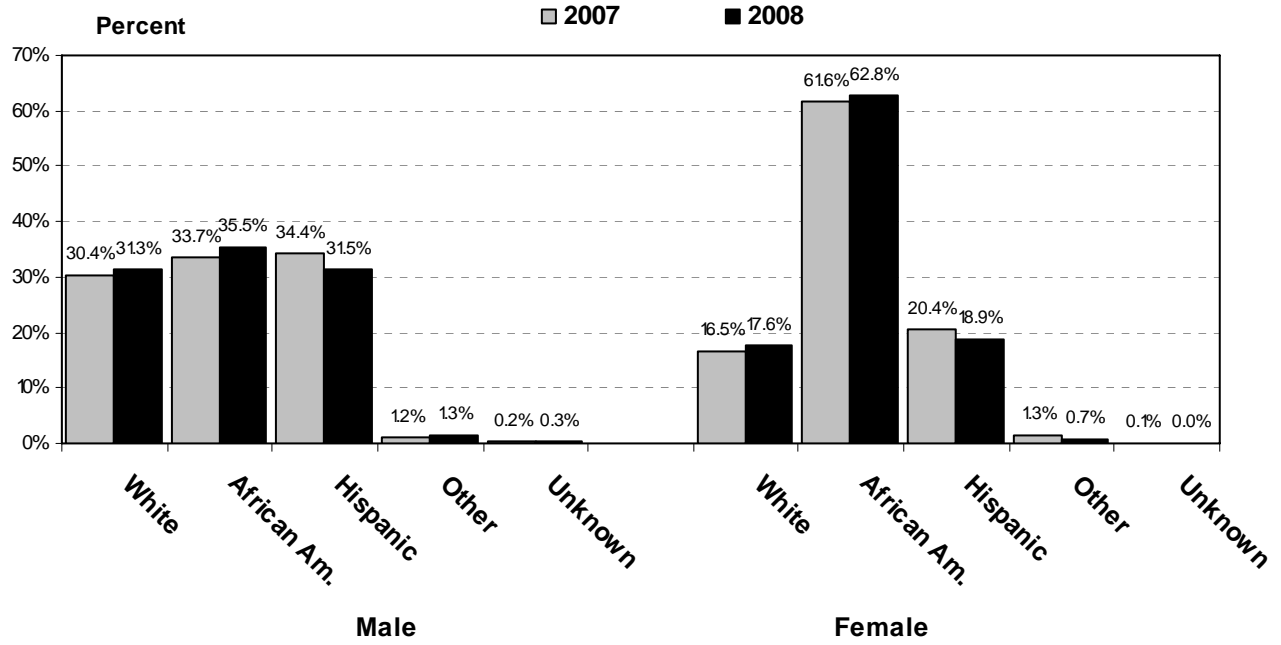
Total White	801	28.0%
Total African-American	1,208	42.2%
Total Hispanic	815	28.4%
Total Asian	26	0.9%
Total American Indian	8	0.3%
Total Unk. Race/Ethnicity	7	0.2%
<b>Total</b>	<b>2,865</b>	

## AIDS Cases by Race/Ethnicity, Diagnosis Category and Sex, 2007 and 2008

Adult/Adolescent Race/Ethnicity	Cumulative Cases*			2007			2008		
	Male	Female	Total	Male	Female	Total	Male	Female	Total
White	31,575	2,578	34,153	673	112	785	677	122	799
African American	17,464	6,548	24,012	747	422	1,169	768	435	1,203
Hispanic	14,485	2,068	16,553	762	141	903	682	131	813
Asian	287	58	345	19	8	27	22	4	26
American Indian	93	11	104	7	1	8	6	1	7
Other/Unknown	45	11	56	5	1	6	7	-	7
<b>Adult Total</b>	<b>63,949</b>	<b>11,274</b>	<b>75,223</b>	<b>2,213</b>	<b>685</b>	<b>2,898</b>	<b>2,162</b>	<b>693</b>	<b>2,855</b>
<b>Pediatric Race/Ethnicity</b>									
White	70	43	113	1	2	3	1	1	2
African American	107	120	227	-	3	3	2	3	5
Hispanic	71	60	131	1	-	1	1	1	2
Asian	2	-	2	-	-	-	-	-	-
American Indian	1	-	1	-	-	-	1	-	1
Other/Unknown	-	-	-	-	-	-	-	-	-
<b>Pediatric Total</b>	<b>251</b>	<b>223</b>	<b>474</b>	<b>2</b>	<b>5</b>	<b>7</b>	<b>5</b>	<b>5</b>	<b>10</b>
<b>Statewide Total</b>	<b>64,200</b>	<b>11,497</b>	<b>75,697</b>	<b>2,215</b>	<b>690</b>	<b>2,905</b>	<b>2,167</b>	<b>698</b>	<b>2,865</b>

\* Cumulative AIDS data includes all cases reported since 1980, including cases originally reported as HIV which have progressed to AIDS.

## Adult/Adolescent AIDS Case Percentages by Race/Ethnicity and Sex, 2007-2008



<b>HIV/AIDS Cases by National Origin, 2008</b>		
<b>National Origin</b>	<b>HIV (Non-AIDS)</b>	<b>AIDS</b>
<b>U.S.</b>	2,481	2,183
<b>U.S. Dependency</b>	7	6
<b>Unknown</b>	555	367
<b>Other*</b>	310	309
Including:		
Mexico	153	162
Honduras	16	31
El Salvador	11	13
Kenya	16	8
Nigeria	13	9
Guatemala	2	14
Zimbabwe	5	7
Ethiopia	6	4
India	7	2
South Africa	3	6
Burundi	3	5
Zambia	5	3
Colombia	5	2
Vietnam	6	1
Cuba	5	1
Cameroon	2	3
Philippines	2	3
Congo	4	-
Germany	3	1
Liberia	1	3
Tanzania	3	1
Haiti	2	1
Jamaica	3	-
Uganda	1	2
United Kingdom	3	-
Venezuela	2	1
<b>State Total</b>	<b>3,353</b>	<b>2,865</b>

\* Other countries of national origin listed by total HIV/AIDS cases reported.

# HIV/AIDS by Mode of Exposure

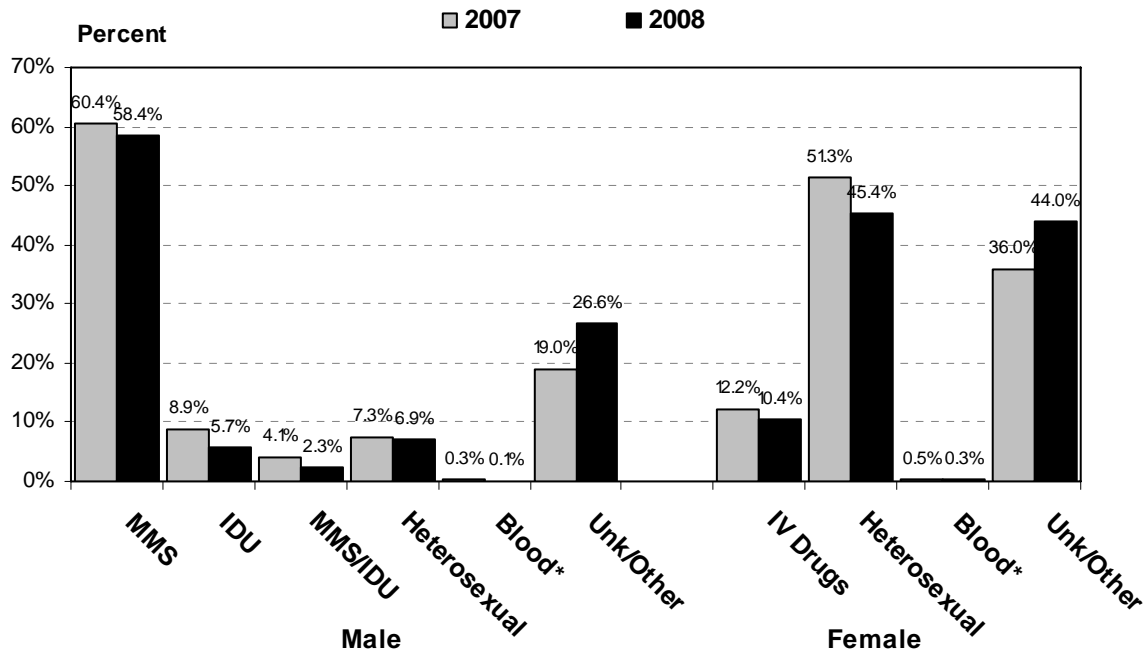
## HIV Cases by Mode of Exposure, Diagnosis Category and Sex, 2007 and 2008

Adult/Adolescent Mode of Exposure*	Cumulative Cases**			2007			2008		
	Male	Female	Total	Male	Female	Total	Male	Female	Total
Male-Male Sex (MMS)	12,535	-	12,535	1,573	-	1,573	1,487	-	1,487
Intravenous Drug Use (IDU)	2,213	1,211	3,424	231	97	328	145	81	226
MMS & IDU	1,371	-	1,371	107	-	107	58	-	58
Coagulation Disorder	15	5	20	1	-	1	1	-	1
Heterosexual Contact	1,497	3,594	5,091	191	408	599	177	353	530
Transfusion	35	33	68	6	4	10	2	2	4
Unknown/Other	3,495	2,139	5,634	494	286	780	678	342	1,020
<b>Adult Total</b>	<b>21,161</b>	<b>6,982</b>	<b>28,143</b>	<b>2,603</b>	<b>795</b>	<b>3,398</b>	<b>2,548</b>	<b>778</b>	<b>3,326</b>
<b>Pediatric Mode of Exposure*</b>									
Coagulation Disorder	13	1	14	-	-	-	-	-	-
Mother with Risk or Has HIV	203	185	388	7	11	18	9	11	20
Transfusion	-	1	1	-	-	-	-	-	-
Unknown/Other	27	20	47	1	-	1	3	4	7
<b>Pediatric Total</b>	<b>243</b>	<b>207</b>	<b>450</b>	<b>8</b>	<b>11</b>	<b>19</b>	<b>12</b>	<b>15</b>	<b>27</b>
<b>Statewide Total</b>	<b>21,404</b>	<b>7,189</b>	<b>28,593</b>	<b>2,611</b>	<b>806</b>	<b>3,417</b>	<b>2,560</b>	<b>793</b>	<b>3,353</b>

\* HIV/AIDS mode of exposure has been categorized into hierarchal exposure groups for persons who have multiple possible risks.

\*\* Cumulative HIV data includes pediatric HIV infections reported since 1994 and adult/adolescent HIV infections reported since 1999.

## Adult/Adolescent HIV Case Percentages by Mode of Exposure and Sex, 2007-2008



\* Blood combines Transfusion and Coagulation Disorder modes of exposure.

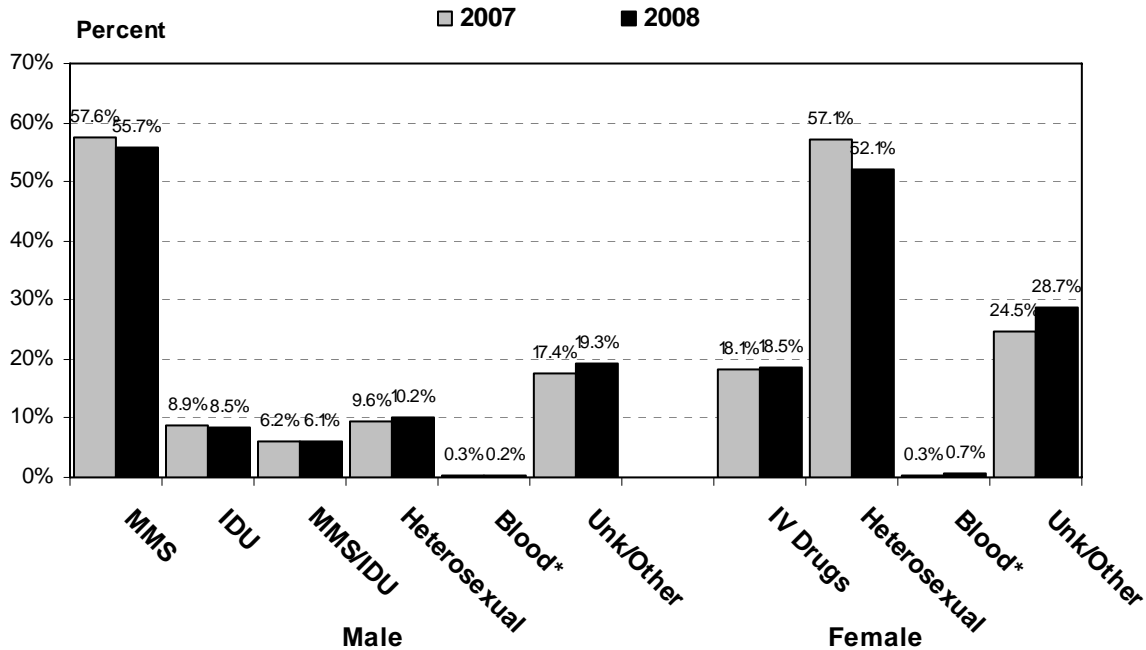
## AIDS Cases by Mode of Exposure, Diagnosis Category and Sex, 2007 and 2008

Adult/Adolescent Mode of Exposure*	Cumulative Cases**			2007			2008		
	Male	Female	Total	Male	Female	Total	Male	Female	Total
Male-Male Sex (MMS)	40,816	-	40,816	1,274	-	1,274	1,205	-	1,205
Intravenous Drug Use (IDU)	7,089	3,384	10,473	198	124	322	183	128	311
MMS & IDU	6,527	-	6,527	137	-	137	132	-	132
Coagulation Disorder	246	13	259	1	-	1	1	-	1
Heterosexual Contact	3,676	5,491	9,167	212	391	603	220	361	581
Transfusion	454	276	730	5	2	7	4	5	9
Unknown/Other	5,141	2,110	7,251	386	168	554	417	199	616
<b>Adult Total</b>	<b>63,949</b>	<b>11,274</b>	<b>75,223</b>	<b>2,213</b>	<b>685</b>	<b>2,898</b>	<b>2,162</b>	<b>693</b>	<b>2,855</b>
<b>Pediatric Mode of Exposure*</b>									
Coagulation Disorder	50	-	50	-	-	-	-	-	-
Mother with Risk or Has HIV	173	186	359	2	5	7	4	4	8
Transfusion	25	22	47	-	-	-	-	-	-
Unknown/Other	3	15	18	-	-	-	1	1	2
<b>Pediatric Total</b>	<b>251</b>	<b>223</b>	<b>474</b>	<b>2</b>	<b>5</b>	<b>7</b>	<b>5</b>	<b>5</b>	<b>10</b>
<b>Statewide Total</b>	<b>64,200</b>	<b>11,497</b>	<b>75,697</b>	<b>2,215</b>	<b>690</b>	<b>2,905</b>	<b>2,167</b>	<b>698</b>	<b>2,865</b>

\* HIV/AIDS mode of exposure has been categorized into hierarchal exposure groups for persons who have multiple possible risks.

‡ Cumulative AIDS data include all cases reported since 1980, including cases originally reported as HIV which have progressed to AIDS.

### Adult/Adolescent AIDS Case Percentages by Mode of Exposure and Sex, 2007-2008



\* Blood combines Transfusion and Coagulation Disorder modes of exposure.

# STD Geographic Data Summary

## Chlamydia and Gonorrhea Cases by Public Health Region, 2007 and 2008

Public Health Region	Chlamydia				Gonorrhea			
	2007 Cases	2007 Rate*	2008 Cases	2008 Rate*	2007 Cases	2007 Rate*	2008 Cases	2008 Rate*
Region 1	3,166	384.8	3,780	456.7	1,150	139.8	1,087	131.3
Region 2	1,641	295.3	1,927	346.1	655	117.9	610	109.6
Region 3	22,489	348.4	26,202	396.2	10,129	156.9	9,215	139.3
Region 4	3,813	352.2	3,839	351.4	1,665	153.8	1,620	148.3
Region 5	2,131	277.7	2,440	316.4	1,084	141.3	1,035	134.2
Region 6	17,588	313.1	21,151	368.4	7,903	140.7	7,301	127.2
Region 7	12,529	469.6	14,626	537.1	4,428	166.0	4,876	179.1
Region 8	10,000	416.9	10,890	447.3	2,816	117.4	3,329	136.7
Region 9	1,796	329.0	2,438	444.2	571	104.6	704	128.3
Region 10	3,008	389.2	3,415	436.2	399	51.6	550	70.3
Region 11	6,623	324.5	7,999	383.4	961	47.1	1,242	59.5
<b>State Total</b>	<b>84,784</b>	<b>357.3</b>	<b>98,707</b>	<b>408.2</b>	<b>31,761</b>	<b>133.9</b>	<b>31,569</b>	<b>130.6</b>

\* Rates represent cases per 100,000 population.

## Syphilis Cases by Public Health Region, 2007 and 2008

Public Health Region	Congenital		Primary & Secondary				Early Latent		Total Syphilis	
	2007 Cases	2008 Cases	2007 Cases	2007 Rate*	2008 Cases	2008 Rate*	2007 Cases	2008 Cases	2007 Cases	2008 Cases
Region 1	-	-	15	1.8	30	3.6	17	21	49	67
Region 2	-	-	3	0.5	2	0.4	10	7	28	24
Region 3	29	19	267	4.1	329	5.0	518	501	1,690	1,796
Region 4	3	8	17	1.6	44	4.0	17	64	101	258
Region 5	3	15	53	6.9	167	21.7	72	89	258	454
Region 6	45	55	512	9.1	461	8.0	506	567	2,107	2,118
Region 7	1	3	108	4.0	145	5.3	155	154	432	506
Region 8	5	13	171	7.1	211	8.7	164	226	501	676
Region 9	1	1	5	0.9	-	-	27	13	83	81
Region 10	2	6	10	1.3	7	0.9	23	35	94	107
Region 11	6	4	11	0.5	9	0.4	53	55	230	234
<b>State Total</b>	<b>95</b>	<b>124</b>	<b>1,172</b>	<b>4.9</b>	<b>1,405</b>	<b>5.8</b>	<b>1,562</b>	<b>1,732</b>	<b>5,573</b>	<b>6,321</b>

\* Rates represent cases per 100,000 population.

## Chlamydia and Gonorrhea Cases and Rates by County of Residence, 2008

County	Chlamydia		Gonorrhea		County	Chlamydia		Gonorrhea	
	2008 Cases	2008 Rate*	2008 Cases	2008 Rate*		2008 Cases	2008 Rate*	2008 Cases	2008 Rate*
Anderson	148	255.6	62	107.1	Donley	6	146.6	2	48.9
Andrews	38	275.8	2	14.5	Duval	18	130.9	2	14.5
Angelina	226	268.5	104	123.6	Eastland	14	74.2	1	5.3
Aransas	105	412.6	19	74.7	Ector	632	486.9	220	169.5
Archer	14	147.3	7	73.7	Edwards	2	88.5	-	-
Armstrong	3	134.0	1	44.7	Ellis	392	265.6	122	82.6
Atascosa	103	221.6	14	30.1	El Paso	3,344	442.8	539	71.4
Austin	52	186.7	22	79.0	Erath	90	242.1	8	21.5
Bailey	22	308.0	1	14.0	Falls	90	476.9	39	206.7
Bandera	19	90.3	5	23.8	Fannin	70	197.4	27	76.1
Bastrop	257	306.4	55	65.6	Fayette	34	141.1	17	70.5
Baylor	11	269.6	9	220.6	Fisher	12	288.5	3	72.1
Bee	124	359.9	20	58.0	Floyd	19	233.2	6	73.6
Bell	3,161	1,201.5	1,198	455.4	Foard	3	186.5	-	-
Bexar	8,869	567.7	2,908	186.1	Fort Bend	1,198	234.5	303	59.3
Blanco	15	146.8	-	-	Franklin	20	198.2	9	89.2
Borden	1	131.1	-	-	Freestone	41	206.0	28	140.7
Bosque	34	183.6	15	81.0	Frio	61	352.0	4	23.1
Bowie	413	441.6	199	212.8	Gaines	19	120.8	3	19.1
Brazoria	717	243.6	121	41.1	Galveston	1,022	358.2	416	145.8
Brazos	759	455.0	353	211.6	Garza	23	434.6	4	75.6
Brewster	43	446.8	8	83.1	Gillespie	30	126.9	-	-
Briscoe	-	-	-	-	Glasscock	1	65.7	-	-
Brooks	32	374.0	5	58.4	Goliad	9	120.2	1	13.4
Brown	127	321.6	22	55.7	Gonzales	93	457.5	18	88.6
Burleson	41	221.8	16	86.6	Gray	45	203.7	2	9.1
Burnet	86	203.5	28	66.3	Grayson	305	253.5	109	90.6
Caldwell	136	351.4	54	139.5	Gregg	674	572.7	273	232.0
Calhoun	48	221.9	6	27.7	Grimes	60	230.1	20	76.7
Callahan	14	102.4	5	36.6	Guadalupe	249	217.0	89	77.5
Cameron	1,205	299.9	215	53.5	Hale	192	509.8	31	82.3
Camp	44	329.0	20	149.6	Hall	6	156.2	-	-
Carson	2	30.7	-	-	Hamilton	16	190.3	-	-
Cass	76	251.3	63	208.3	Hansford	2	35.2	-	-
Castro	26	292.9	3	33.8	Hardeman	8	169.3	3	63.5
Chambers	23	69.7	6	18.2	Hardin	73	140.6	22	42.4
Cherokee	144	289.7	71	142.8	Harris	16,549	427.9	6,070	156.9
Childress	14	178.8	2	25.5	Harrison	174	273.0	81	127.1
Clay	14	122.4	2	17.5	Hartley	3	52.7	1	17.6
Cochran	15	369.3	2	49.2	Haskell	11	181.8	6	99.2
Coke	11	277.8	1	25.3	Hays	923	591.6	148	94.9
Coleman	11	119.7	5	54.4	Hemphill	5	142.6	-	-
Collin	1,486	195.4	364	47.9	Henderson	156	189.6	28	34.0
Collingsworth	12	378.1	1	31.5	Hidalgo	2,745	366.4	134	17.9
Colorado	51	228.6	16	71.7	Hill	119	329.4	33	91.3
Comal	143	139.8	35	34.2	Hockley	113	471.8	28	116.9
Comanche	14	98.6	2	14.1	Hood	82	163.2	5	10.0
Concho	1	24.9	-	-	Hopkins	60	174.5	29	84.3
Cooke	81	202.3	27	67.4	Houston	56	232.6	23	95.5
Coryell	226	300.8	66	87.8	Howard	155	456.1	64	188.3
Cottle	-	-	-	-	Hudspeth	8	208.7	-	-
Crane	7	162.3	1	23.2	Hunt	254	288.8	48	54.6
Crockett	15	341.3	1	22.8	Hutchinson	58	251.4	8	34.7
Crosby	28	374.8	6	80.3	Irion	2	108.3	-	-
Culberson	4	122.2	1	30.5	Jack	17	190.0	2	22.4
Dallam	13	194.3	2	29.9	Jackson	39	264.8	5	33.9
Dallas	13,495	575.5	5,070	216.2	Jasper	123	336.5	43	117.6
Dawson	46	294.7	16	102.5	Jeff Davis	1	39.0	-	-
Deaf Smith	80	398.8	7	34.9	Jefferson	1,126	444.0	542	213.7
Delta	8	148.3	5	92.7	Jim Hogg	13	233.4	3	53.9
Denton	1,243	184.2	328	48.6	Jim Wells	153	365.8	36	86.1
De Witt	57	276.2	18	87.2	Johnson	265	166.3	60	37.7
Dickens	4	136.5	-	-	Jones	49	235.8	19	91.4
Dimmit	44	408.2	6	55.7	Karnes	33	206.7	4	25.0

\* Rates represent cases per 100,000 population.

## Chlamydia and Gonorrhea Cases and Rates by County of Residence, 2008

County	Chlamydia		Gonorrhea	
	2008 Cases	2008 Rate*	2008 Cases	2008 Rate*
Kaufman	271	271.0	79	79.0
Kendall	51	159.4	7	21.9
Kenedy	1	217.9	-	-
Kent	-	-	-	-
Kerr	81	170.5	18	37.9
Kimble	5	107.6	-	-
King	-	-	-	-
Kinney	2	58.2	-	-
Kleberg	185	526.5	31	88.2
Knox	17	402.2	12	283.9
Lamar	216	426.5	125	246.8
Lamb	56	364.0	11	71.5
Lampasas	35	153.3	8	35.0
La Salle	24	366.8	3	45.9
Lavaca	25	128.3	12	61.6
Lee	30	171.3	5	28.6
Leon	24	139.7	7	40.7
Liberty	248	301.8	39	47.5
Limestone	76	325.7	39	167.1
Lipscomb	4	128.8	-	-
Live Oak	18	145.0	2	16.1
Llano	13	69.0	6	31.8
Loving	-	-	-	-
Lubbock	1,411	547.6	429	166.5
Lynn	8	116.3	1	14.5
McCulloch	19	226.8	1	11.9
McLennan	1,304	578.6	564	250.2
McMullen	5	572.7	-	-
Madison	31	220.9	11	78.4
Marion	26	230.7	9	79.9
Martin	17	327.8	1	19.3
Mason	6	148.8	-	-
Matagorda	125	320.3	30	76.9
Maverick	109	203.0	28	52.2
Medina	78	173.5	6	13.3
Menard	3	117.0	-	-
Midland	710	575.5	231	187.3
Milam	98	372.8	33	125.5
Mills	-	-	-	-
Mitchell	33	332.8	4	40.3
Montague	21	104.7	4	19.9
Montgomery	656	154.1	130	30.5
Moore	59	276.5	10	46.9
Morris	50	377.7	35	264.4
Motley	1	70.5	-	-
Nacogdoches	331	527.6	131	208.8
Navarro	262	520.6	97	192.8
Newton	46	301.4	16	104.8
Nolan	65	411.1	52	328.8
Nueces	1,971	608.7	582	179.7
Ochiltree	18	182.8	-	-
Oldham	-	-	-	-
Orange	218	256.7	48	56.5
Palo Pinto	29	102.3	9	31.8
Panola	62	269.6	18	78.3
Parker	163	143.3	36	31.6
Parmer	26	246.5	2	19.0
Pecos	54	307.1	5	28.4
Polk	65	131.4	25	50.6
Potter	1,103	886.5	412	331.1
Presidio	15	178.5	2	23.8
Rains	12	104.0	1	8.7
Randall	265	234.5	89	78.8
Reagan	4	108.6	-	-

County	Chlamydia		Gonorrhea	
	2008 Cases	2008 Rate*	2008 Cases	2008 Rate*
Real	10	308.7	-	-
Red River	50	344.6	22	151.6
Reeves	38	298.8	7	55.0
Refugio	15	182.1	7	85.0
Roberts	-	-	-	-
Robertson	57	337.3	27	159.8
Rockwall	85	113.4	20	26.7
Runnels	14	121.8	3	26.1
Rusk	109	220.4	39	78.8
Sabine	16	147.2	10	92.0
San Augustine	18	192.4	11	117.6
San Jacinto	19	77.2	4	16.3
San Patricio	220	304.8	25	34.6
San Saba	10	158.3	4	63.3
Schleicher	2	63.7	1	31.8
Scurry	47	281.9	14	84.0
Shackelford	4	118.2	-	-
Shelby	64	240.8	33	124.2
Sherman	7	210.5	1	30.1
Smith	1,024	521.7	447	227.7
Somervell	16	188.4	1	11.8
Starr	174	267.1	24	36.8
Stephens	14	140.5	-	-
Sterling	2	136.5	-	-
Stonewall	2	117.4	1	58.7
Sutton	6	134.8	2	44.9
Swisher	34	386.1	-	-
Tarrant	7,529	437.7	2,800	162.8
Taylor	594	448.9	157	118.6
Terrell	3	272.5	-	-
Terry	71	529.7	22	164.1
Throckmorton	-	-	-	-
Titus	136	433.6	29	92.5
Tom Green	569	546.2	130	124.8
Travis	5,748	627.5	1,849	201.8
Trinity	15	100.2	10	66.8
Tyler	44	200.3	13	59.2
Upshur	104	274.1	24	63.3
Upton	10	272.4	2	54.5
Uvalde	80	283.7	8	28.4
Val Verde	157	317.0	11	22.2
Van Zandt	88	164.8	13	24.4
Victoria	348	391.9	107	120.5
Walker	223	333.1	72	107.6
Waller	150	352.3	47	110.4
Ward	39	342.4	16	140.5
Washington	99	304.8	41	126.2
Webb	907	362.6	120	48.0
Wharton	137	314.6	29	66.6
Wheeler	7	137.9	1	19.7
Wichita	725	571.0	250	196.9
Wilbarger	46	310.6	20	135.0
Willacy	92	424.5	14	64.6
Williamson	1,103	295.0	212	56.7
Wilson	69	161.2	8	18.7
Winkler	23	304.0	-	-
Wise	84	142.2	5	8.5
Wood	45	108.5	18	43.4
Yoakum	19	237.8	2	25.0
Young	26	144.0	7	38.8
Zapata	16	103.7	3	19.4
Zavala	57	458.1	8	64.3
<b>Total</b>	<b>98,707</b>	<b>408.2</b>	<b>31,569</b>	<b>130.6</b>

\* Rates represent cases per 100,000 population.

**P&S\*, Early Latent and Total Syphilis Cases and Rates by County of Residence, 2008**

County	P&S*		Early Latent		Total SY**
	2008 Cases	2008 Rate***	2008 Cases	2008 Rate***	2008 Cases
Anderson	-	-	1	1.7	5
Andrews	-	-	2	14.5	2
Angelina	-	-	1	1.2	33
Aransas	-	-	-	-	-
Archer	-	-	-	-	-
Armstrong	-	-	-	-	-
Atascosa	2	4.3	4	8.6	8
Austin	1	3.6	2	7.2	5
Bailey	-	-	-	-	-
Bandera	3	14.3	-	-	4
Bastrop	3	3.6	-	-	9
Baylor	-	-	-	-	-
Bee	-	-	-	-	2
Bell	5	1.9	1	0.4	28
Bexar	187	12.0	191	12.2	570
Blanco	-	-	-	-	1
Borden	-	-	-	-	-
Bosque	1	5.4	-	-	1
Bowie	19	20.3	22	23.5	67
Brazoria	8	2.7	13	4.4	33
Brazos	8	4.8	6	3.6	36
Brewster	-	-	-	-	-
Briscoe	-	-	-	-	-
Brooks	-	-	-	-	-
Brown	-	-	-	-	-
Burleson	-	-	-	-	2
Burnet	1	2.4	-	-	3
Caldwell	1	2.6	-	-	3
Calhoun	-	-	-	-	1
Callahan	-	-	-	-	-
Cameron	-	-	7	1.7	34
Camp	-	-	-	-	5
Carson	-	-	-	-	-
Cass	1	3.3	3	9.9	6
Castro	-	-	-	-	-
Chambers	-	-	-	-	-
Cherokee	1	2.0	3	6.0	7
Childress	-	-	-	-	-
Clay	-	-	-	-	-
Cochran	-	-	1	24.6	1
Coke	-	-	-	-	-
Coleman	-	-	-	-	-
Collin	5	0.7	11	1.4	42
Collingsworth	-	-	-	-	1
Colorado	1	4.5	-	-	3
Comal	2	2.0	2	2.0	5
Comanche	-	-	-	-	-
Concho	-	-	-	-	6
Cooke	-	-	-	-	1
Coryell	1	1.3	3	4.0	9
Cottle	-	-	-	-	-
Crane	-	-	-	-	-
Crockett	-	-	-	-	-
Crosby	-	-	-	-	-
Culberson	-	-	-	-	-
Dallam	-	-	-	-	-
Dallas	214	9.1	375	16.0	1,306
Dawson	-	-	2	12.8	9
Deaf Smith	-	-	-	-	-
Delta	-	-	-	-	-
Denton	3	0.4	14	2.1	38
De Witt	1	4.8	4	19.4	6
Dickens	-	-	-	-	-
Dimmit	-	-	-	-	-

County	P&S*		Early Latent		Total SY**
	2008 Cases	2008 Rate***	2008 Cases	2008 Rate***	2008 Cases
Donley	-	-	1	24.4	1
Duval	-	-	-	-	-
Eastland	-	-	-	-	-
Ector	-	-	4	3.1	19
Edwards	-	-	-	-	-
Ellis	1	0.7	1	0.7	12
El Paso	7	0.9	31	4.1	101
Erath	-	-	-	-	1
Falls	-	-	-	-	2
Fannin	-	-	-	-	1
Fayette	-	-	-	-	-
Fisher	-	-	-	-	-
Floyd	-	-	-	-	-
Foard	-	-	-	-	-
Fort Bend	23	4.5	26	5.1	106
Franklin	1	9.9	-	-	3
Freestone	-	-	-	-	2
Frio	-	-	-	-	-
Gaines	-	-	-	-	-
Galveston	29	10.2	41	14.4	96
Garza	-	-	-	-	2
Gillespie	-	-	-	-	1
Glasscock	-	-	-	-	-
Goliad	-	-	-	-	-
Gonzales	-	-	1	4.9	3
Gray	1	4.5	-	-	1
Grayson	-	-	3	2.5	7
Gregg	5	4.2	12	10.2	58
Grimes	-	-	2	7.7	3
Guadalupe	2	1.7	1	0.9	4
Hale	-	-	-	-	4
Hall	-	-	-	-	-
Hamilton	-	-	-	-	-
Hansford	-	-	-	-	-
Hardeman	-	-	-	-	-
Hardin	5	9.6	1	1.9	18
Harris	380	9.8	470	12.2	1,792
Harrison	2	3.1	1	1.6	9
Hartley	-	-	-	-	-
Haskell	-	-	-	-	-
Hays	3	1.9	3	1.9	12
Hemphill	-	-	-	-	-
Henderson	-	-	2	2.4	5
Hidalgo	1	0.1	26	3.5	115
Hill	-	-	3	8.3	3
Hockley	1	4.2	1	4.2	2
Hood	-	-	2	4.0	2
Hopkins	-	-	-	-	1
Houston	-	-	1	4.2	6
Howard	-	-	1	2.9	10
Hudspeth	-	-	4	104.4	6
Hunt	-	-	2	2.3	2
Hutchinson	-	-	-	-	1
Irion	-	-	-	-	-
Jack	-	-	-	-	-
Jackson	-	-	1	6.8	3
Jasper	4	10.9	3	8.2	11
Jeff Davis	-	-	-	-	-
Jefferson	141	55.6	69	27.2	308
Jim Hogg	-	-	-	-	-
Jim Wells	-	-	-	-	-
Johnson	1	0.6	2	1.3	5
Jones	-	-	1	4.8	2
Karnes	-	-	-	-	-

\* Primary and Secondary syphilis.

\*\* Total Syphilis includes all stages of syphilis including congenital syphilis.

\*\*\* Rates represent cases per 100,000 population.

## P&S\*, Early Latent and Total Syphilis Cases and Rates by County of Residence, 2008

County	P&S*		Early Latent		Total SY**
	2008 Cases	2008 Rate***	2008 Cases	2008 Rate***	2008 Cases
Kaufman	1	1.0	10	10.0	17
Kendall	-	-	1	3.1	1
Kenedy	-	-	-	-	-
Kent	-	-	-	-	-
Kerr	-	-	-	-	1
Kimble	-	-	-	-	-
King	-	-	-	-	-
Kinney	-	-	-	-	-
Kleberg	-	-	1	2.8	2
Knox	-	-	-	-	-
Lamar	-	-	-	-	-
Lamb	-	-	-	-	-
Lampasas	-	-	-	-	-
La Salle	1	15.3	1	15.3	2
Lavaca	1	5.1	1	5.1	2
Lee	-	-	-	-	1
Leon	-	-	-	-	1
Liberty	2	2.4	5	6.1	17
Limestone	2	8.6	2	8.6	8
Lipscomb	-	-	-	-	-
Live Oak	-	-	-	-	-
Llano	1	5.3	-	-	2
Loving	-	-	-	-	-
Lubbock	20	7.8	13	5.0	38
Lynn	-	-	-	-	-
McCulloch	-	-	-	-	-
McLennan	13	5.8	23	10.2	50
McMullen	-	-	-	-	-
Madison	1	7.1	-	-	1
Marion	1	8.9	1	8.9	3
Martin	-	-	-	-	1
Mason	-	-	-	-	-
Matagorda	1	2.6	1	2.6	5
Maverick	-	-	3	5.6	10
Medina	1	2.2	-	-	2
Menard	-	-	-	-	-
Midland	-	-	1	0.8	8
Milam	1	3.8	1	3.8	4
Mills	-	-	-	-	-
Mitchell	-	-	-	-	-
Montague	-	-	-	-	-
Montgomery	11	2.6	5	1.2	36
Moore	-	-	-	-	-
Morris	4	30.2	1	7.6	9
Motley	-	-	-	-	-
Nacogdoches	2	3.2	4	6.4	18
Navarro	-	-	1	2.0	7
Newton	-	-	-	-	1
Nolan	-	-	-	-	-
Nueces	7	2.2	8	2.5	31
Ochiltree	-	-	-	-	-
Oldham	-	-	-	-	-
Orange	12	14.1	7	8.2	31
Palo Pinto	-	-	-	-	1
Panola	2	8.7	6	26.1	9
Parker	1	0.9	2	1.8	5
Parmer	1	9.5	1	9.5	2
Pecos	-	-	-	-	-
Polk	-	-	-	-	2
Potter	5	4.0	3	2.4	10
Presidio	-	-	-	-	-
Rains	-	-	-	-	-
Randall	1	0.9	-	-	2
Reagan	-	-	-	-	-

County	P&S*		Early Latent		Total SY**
	2008 Cases	2008 Rate***	2008 Cases	2008 Rate***	2008 Cases
Real	-	-	-	-	-
Red River	-	-	-	-	-
Reeves	-	-	-	-	18
Refugio	-	-	-	-	-
Roberts	-	-	-	-	-
Robertson	4	23.7	3	17.8	9
Rockwall	-	-	-	-	1
Runnels	-	-	-	-	1
Rusk	1	2.0	1	2.0	8
Sabine	1	9.2	-	-	3
San Augustine	-	-	-	-	4
San Jacinto	1	4.1	-	-	4
San Patricio	1	1.4	2	2.8	7
San Saba	-	-	-	-	-
Schleicher	-	-	-	-	-
Scurry	-	-	2	12.0	2
Shackelford	-	-	-	-	-
Shelby	1	3.8	2	7.5	9
Sherman	-	-	-	-	-
Smith	5	2.5	3	1.5	34
Somervell	-	-	-	-	-
Starr	-	-	-	-	4
Stephens	1	10.0	-	-	3
Sterling	-	-	-	-	-
Stonewall	-	-	-	-	-
Sutton	-	-	-	-	-
Swisher	-	-	-	-	-
Tarrant	103	6.0	78	4.5	348
Taylor	-	-	3	2.3	11
Terrell	-	-	-	-	-
Terry	1	7.5	1	7.5	2
Throckmorton	-	-	-	-	-
Titus	1	3.2	2	6.4	14
Tom Green	-	-	3	2.9	7
Travis	91	9.9	100	10.9	290
Trinity	-	-	-	-	2
Tyler	-	-	1	4.6	4
Upshur	-	-	1	2.6	6
Upton	-	-	-	-	-
Uvalde	-	-	-	-	1
Val Verde	-	-	3	6.1	10
Van Zandt	-	-	3	5.6	4
Victoria	11	12.4	13	14.6	40
Walker	2	3.0	3	4.5	11
Waller	2	4.7	1	2.3	9
Ward	-	-	-	-	1
Washington	-	-	-	-	-
Webb	-	-	11	4.4	31
Wharton	1	2.3	-	-	5
Wheeler	-	-	-	-	-
Wichita	-	-	1	0.8	3
Wilbarger	1	6.8	-	-	1
Willacy	-	-	-	-	7
Williamson	9	2.4	7	1.9	26
Wilson	-	-	-	-	1
Winkler	-	-	-	-	-
Wise	-	-	-	-	-
Wood	1	2.4	2	4.8	5
Yoakum	-	-	-	-	-
Young	-	-	-	-	1
Zapata	-	-	-	-	1
Zavala	-	-	-	-	1
<b>Total</b>	<b>1,405</b>	<b>5.8</b>	<b>1,732</b>	<b>7.2</b>	<b>6,321</b>

\* Primary and Secondary syphilis.

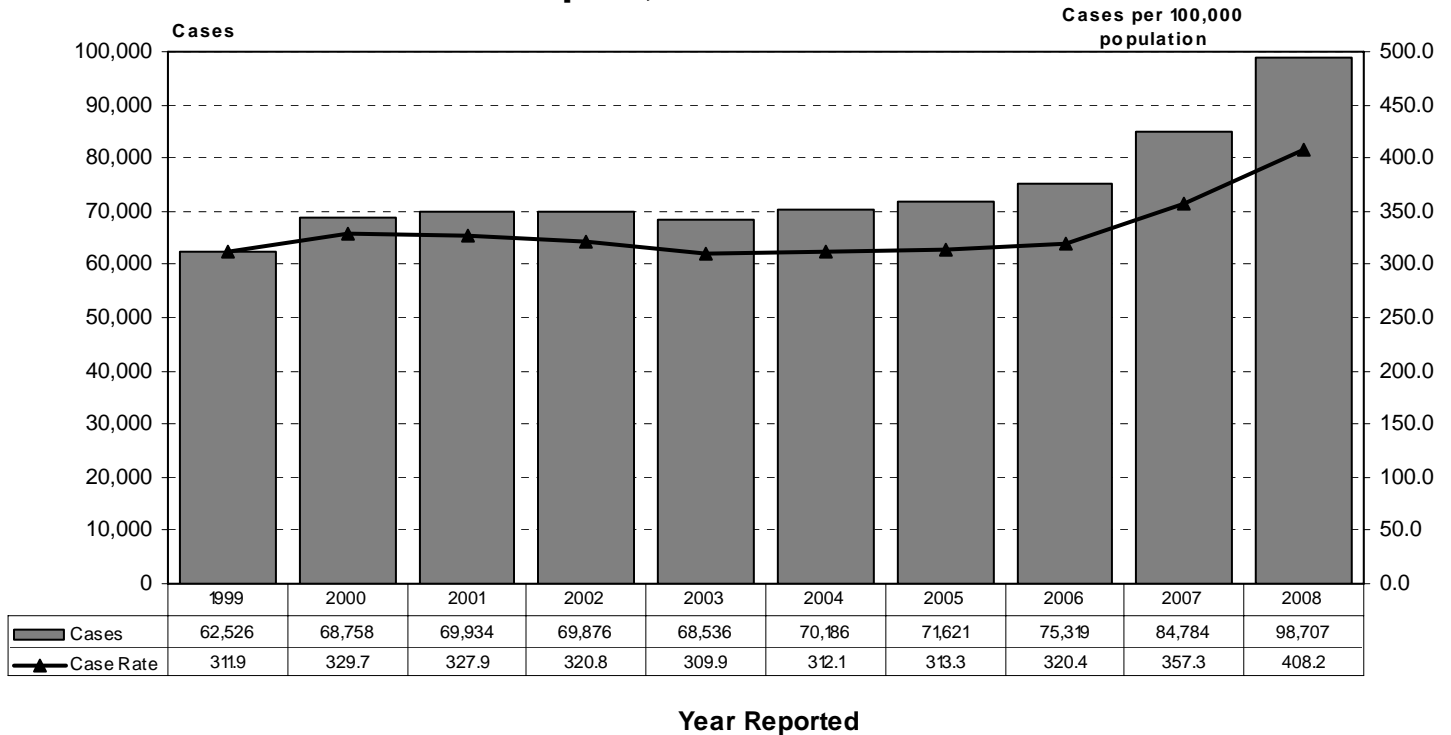
\*\* Total Syphilis includes all stages of syphilis including congenital syphilis.

\*\*\* Rates represent cases per 100,000 population.

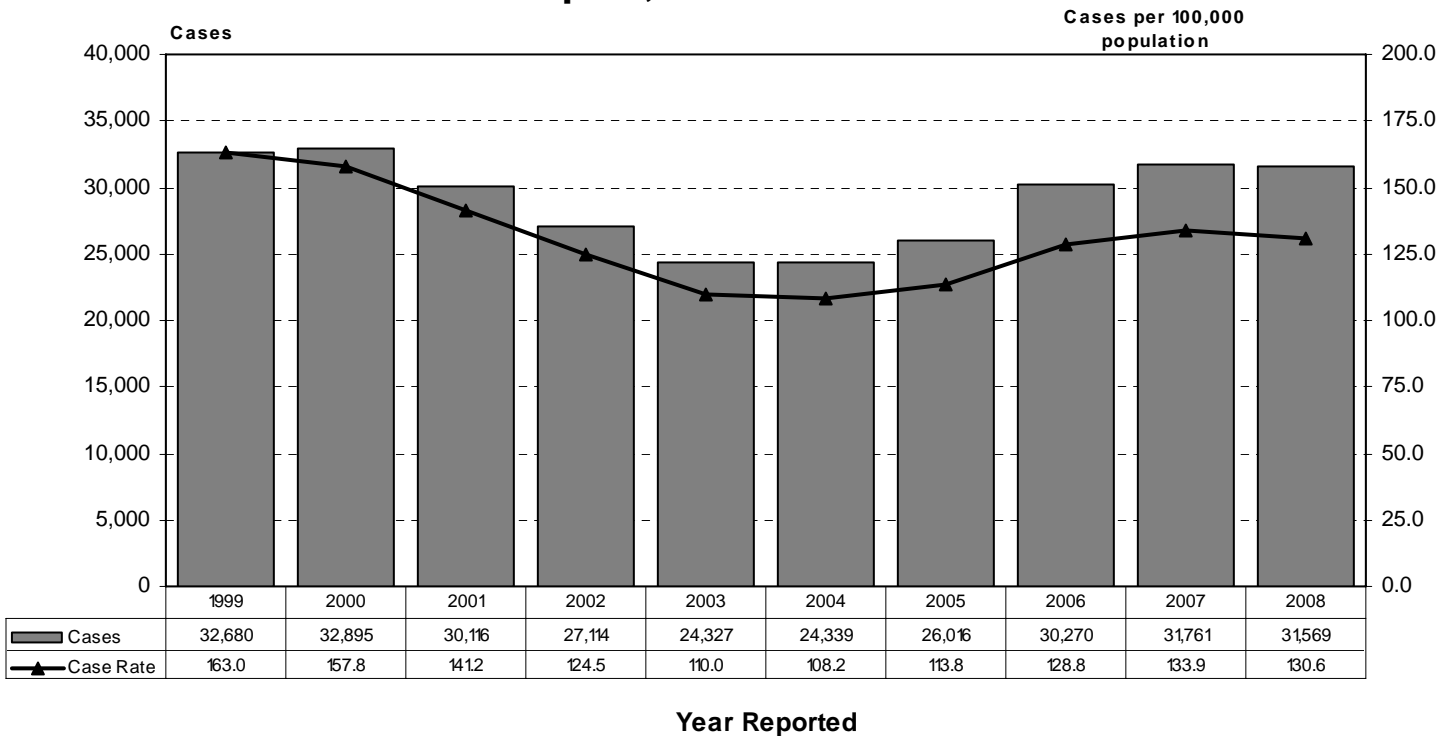
<b>STD Cases by City of Residence, 2008</b>			
<b>City of Residence</b>	<b>Chlamydia</b>	<b>Gonorrhea</b>	<b>Total Syphilis</b>
Houston	14,130	5,484	1,593
Dallas	8,943	3,664	1,006
San Antonio	8,266	2,747	562
Austin	5,280	1,710	279
Fort Worth	4,224	1,804	210
El Paso	2,890	464	92
Arlington	1,792	599	83
Corpus Christi	1,753	546	31
Fort Hood	1,527	407	1
Amarillo	1,317	482	12
Lubbock	1,349	414	36
Waco	1,038	478	43
Beaumont	794	410	230
Tyler	917	412	32
Killeen	852	415	11
Garland	850	253	45
Irving	888	190	58
Laredo	899	118	31
Grand Prairie	728	235	36
Midland	710	231	8
Odessa	628	219	19
San Marcos	734	114	7
Wichita Falls	609	234	2
Mesquite	585	192	41
Longview	527	225	45
Bryan	511	260	25
Temple	495	261	8
Abilene	550	165	13
Round Rock	546	99	10
San Angelo	522	124	6
Brownsville	550	70	16
Mcallen	573	33	27
Plano	449	114	17
Edinburg	524	20	14
Mckinney	437	106	8
Texarkana	313	168	61
Humble	368	114	50
Mission	475	33	20
Denton	386	125	10
Missouri City	348	132	31
Galveston	300	135	36
Nacogdoches	318	128	16
Harlingen	360	93	5
Victoria	320	99	36
Pasadena	370	60	22
Katy	359	74	15
Desoto	302	121	23
Carrollton	325	90	28
Port Arthur	248	118	60
Spring	322	64	35
Lancaster	276	124	21
<b>State Total</b>	<b>98,707</b>	<b>31,569</b>	<b>6,321</b>

\* Top cities listed by total STD cases reported.

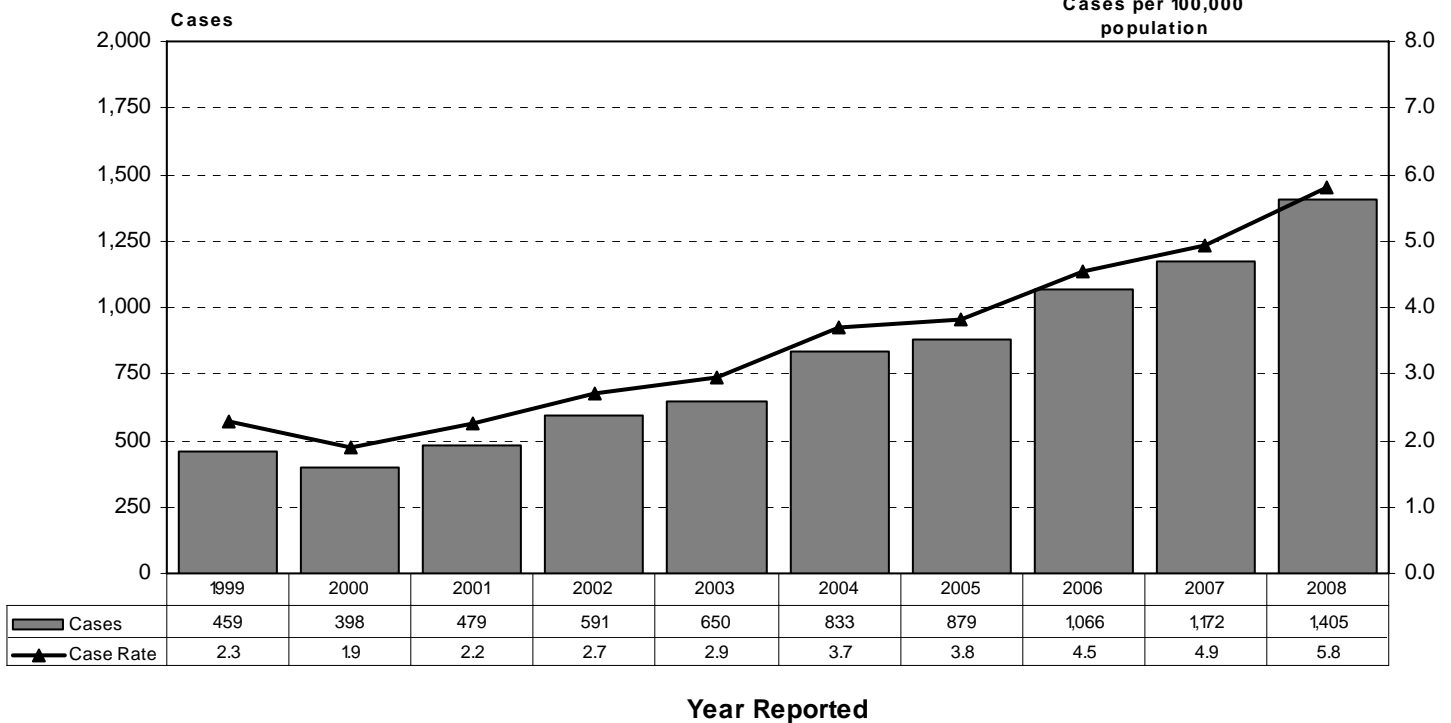
### Texas Chlamydia Cases and Case Rates by Year of Report, 1999-2008



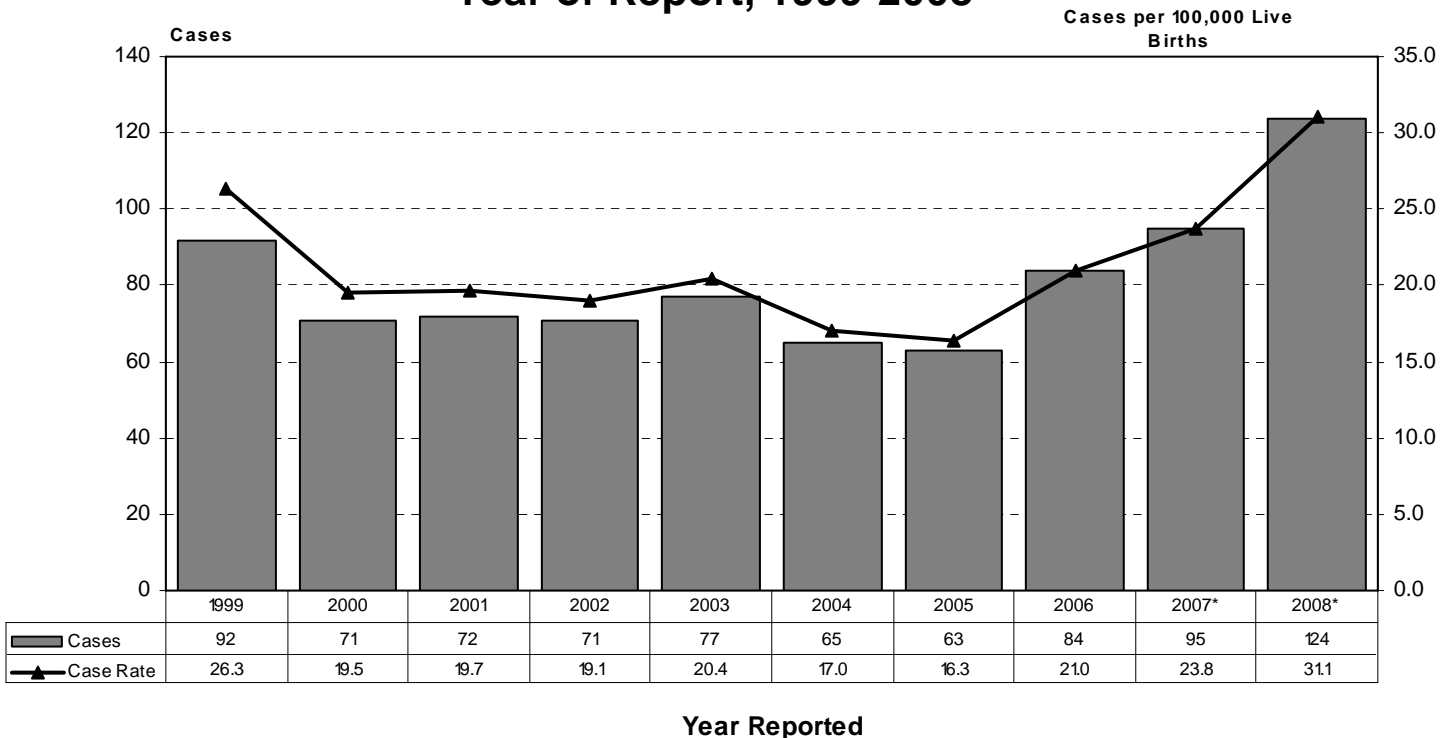
### Texas Gonorrhea Cases and Case Rates by Year of Report, 1999-2008



## Texas Primary and Secondary Syphilis Cases and Case Rates by Year of Report, 1999-2008



## Texas Congenital Syphilis Cases and Case Rates by Year of Report, 1999-2008



\* 2006 birth numbers were used where more recent data were unavailable.

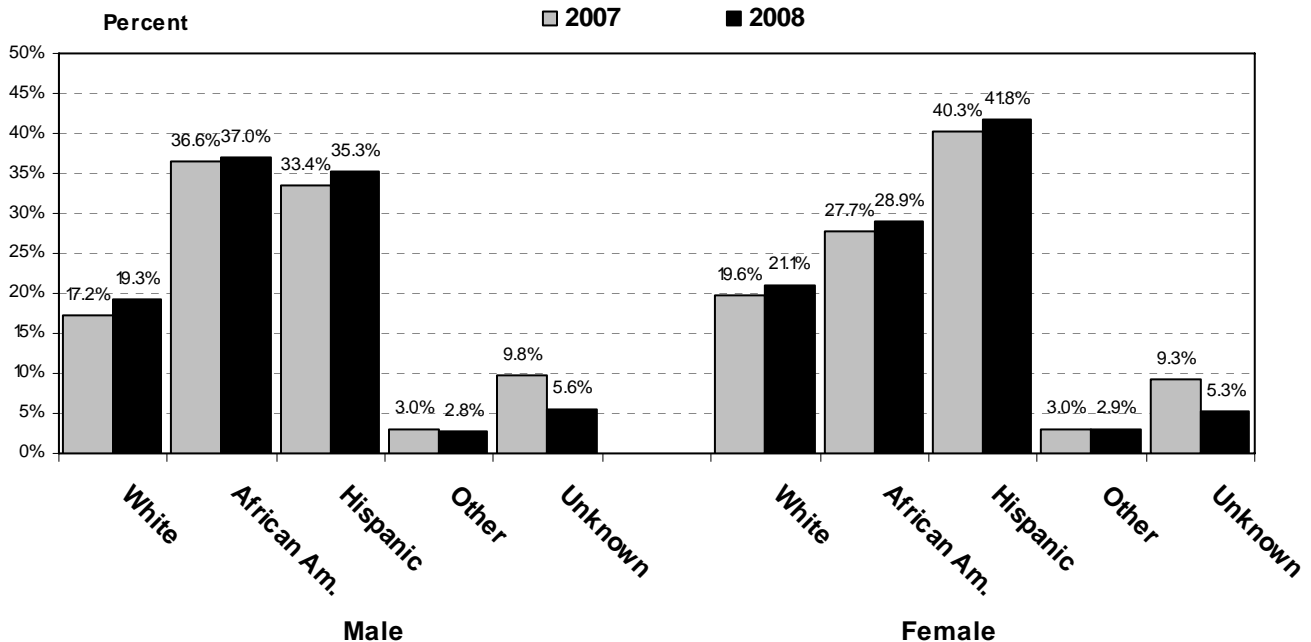
# STD Demographic Data Summary

## Chlamydia Cases by Age Group, Race/Ethnicity and Sex, 2008

Age Group	Male							Female							Unk Sex	Total	Percent	
	White	African Amer.	Hisp.	Asian	Amer. Indian	Other/ Unk	Total	White	African Amer.	Hisp.	Asian	Amer. Indian	Other/ Unk	Total				
0 - 9	6	16	8	-	-	8	38	11	16	14	1	-	7	49	-	87	0.1%	
10 - 14	6	47	34	-	1	5	93	167	389	455	1	2	67	1,081	-	1,174	1.2%	
15 - 19	809	2,264	1,888	12	12	360	5,345	6,202	9,368	11,155	169	21	2,013	28,928	5	34,278	34.7%	
20 - 24	1,692	2,747	2,810	51	4	527	7,831	6,239	7,891	11,625	177	27	1,988	27,947	3	35,781	36.2%	
25 - 29	860	1,384	1,572	46	6	319	4,187	2,219	2,954	5,363	135	13	890	11,574	6	15,767	16.0%	
30 - 34	330	657	705	39	1	173	1,905	800	979	2,211	80	4	380	4,454	2	6,361	6.4%	
35 - 39	198	347	284	14	1	77	921	332	416	900	55	1	142	1,846	1	2,768	2.8%	
40 - 44	115	216	133	4	-	54	522	144	154	330	12	1	64	705	-	1,227	1.2%	
45+	114	222	111	7	1	71	526	142	153	220	11	1	58	585	-	1,111	1.1%	
Unk	5	15	10	-	-	14	44	13	20	40	-	-	32	105	4	153	0.2%	
<b>Total</b>	<b>4,135</b>	<b>7,915</b>	<b>7,555</b>	<b>173</b>	<b>26</b>	<b>1,608</b>	<b>21,412</b>	<b>16,269</b>	<b>22,340</b>	<b>32,313</b>	<b>641</b>	<b>70</b>	<b>5,641</b>	<b>77,274</b>	<b>21</b>	<b>98,707</b>		
<b>Percent</b>	<b>19.3%</b>	<b>37.0%</b>	<b>35.3%</b>	<b>0.8%</b>	<b>0.1%</b>	<b>7.5%</b>		<b>21.1%</b>	<b>28.9%</b>	<b>41.8%</b>	<b>0.8%</b>	<b>0.1%</b>	<b>7.3%</b>					
<b>Percent Male</b>							<b>21.7%</b>	<b>Percent Female</b>							<b>78.3%</b>			

Total White	20,405	20.7%
Total African-American	30,256	30.7%
Total Hispanic	39,871	40.4%
Total Asian	818	0.8%
Total American Indian	96	0.1%
Total Unk Race/Ethnicity	7,261	7.4%
<b>Total</b>	<b>98,707</b>	

## Chlamydia Case Percentages by Race/Ethnicity and Sex, 2007-2008

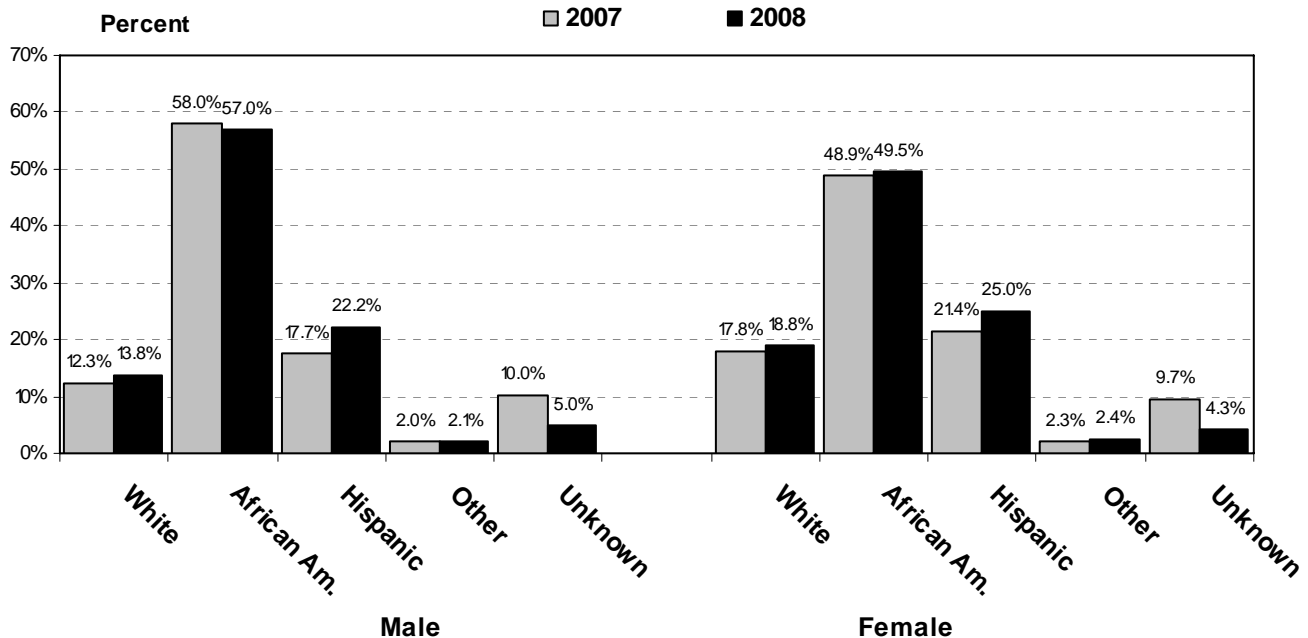


## Gonorrhea Cases by Age Group, Race/Ethnicity and Sex, 2008

Age Group	Male							Female							Unk Sex	Total	Percent
	White	African Amer.	Hisp.	Asian	Amer. Indian	Other/ Unk	Total	White	African Amer.	Hisp.	Asian	Amer. Indian	Other/ Unk	Total			
0 - 9	3	4	2	-	-	3	12	7	20	13	-	-	3	43	-	55	0.2%
10 - 14	3	46	9	-	-	2	60	40	162	66	3	-	17	288	-	348	1.1%
15 - 19	345	2,003	694	8	2	219	3,271	1,028	3,287	1,416	30	8	367	6,136	1	9,408	29.8%
20 - 24	599	2,587	1,064	21	2	256	4,529	1,075	2,794	1,377	36	5	316	5,603	-	10,132	32.1%
25 - 29	357	1,538	671	13	3	156	2,738	503	1,154	717	11	2	136	2,523	-	5,261	16.7%
30 - 34	216	816	362	14	-	94	1,502	222	436	308	9	2	69	1,046	-	2,548	8.1%
35 - 39	188	497	220	8	1	67	981	129	207	147	1	1	46	531	1	1,513	4.8%
40 - 44	126	380	109	6	-	66	687	73	114	75	2	-	19	283	-	970	3.1%
45+	211	581	161	6	1	81	1,041	67	85	58	2	-	21	233	-	1,274	4.0%
Unk	7	8	1	-	-	16	32	2	10	7	-	-	7	26	2	60	0.2%
<b>Total</b>	<b>2,055</b>	<b>8,460</b>	<b>3,293</b>	<b>76</b>	<b>9</b>	<b>960</b>	<b>14,853</b>	<b>3,146</b>	<b>8,269</b>	<b>4,184</b>	<b>94</b>	<b>18</b>	<b>1,001</b>	<b>16,712</b>	<b>4</b>	<b>31,569</b>	
<b>Percent</b>	<b>13.8%</b>	<b>57.0%</b>	<b>22.2%</b>	<b>0.5%</b>	<b>0.1%</b>	<b>6.5%</b>		<b>18.8%</b>	<b>49.5%</b>	<b>25.0%</b>	<b>0.6%</b>	<b>0.1%</b>	<b>6.0%</b>				
<b>Percent Male</b>							<b>47.1%</b>	<b>Percent Female</b>							<b>52.9%</b>		

Total White	5,201	16.5%
Total African-American	16,730	53.0%
Total Hispanic	7,479	23.7%
Total Asian	170	0.5%
Total American Indian	27	0.1%
Total Unk Race/Ethnicity	1,962	6.2%
<b>Total</b>	<b>31,569</b>	

## Gonorrhea Case Percentages by Race/Ethnicity and Sex, 2007-2008



## Primary & Secondary Syphilis Cases by Age Group, Race/Ethnicity and Sex, 2008

Age Group	Male							Female							Unk Sex	Total	Percent
	White	African Amer.	Hisp.	Asian	Amer. Indian	Other/ Unk	Total	White	African Amer.	Hisp.	Asian	Amer. Indian	Other/ Unk	Total			
0 - 9	-	-	-	-	-	-	-	-	-	1	-	-	-	1	-	1	0.1%
10 - 14	-	-	-	-	-	-	-	1	4	1	-	-	-	6	-	6	0.4%
15 - 19	6	43	16	-	-	-	65	8	59	7	-	-	1	75	-	140	10.0%
20 - 24	25	112	50	3	-	2	192	17	84	18	-	-	2	121	-	313	22.3%
25 - 29	28	100	45	3	1	3	180	9	59	8	-	-	-	76	-	256	18.2%
30 - 34	30	56	37	2	-	3	128	8	30	10	-	-	2	50	-	178	12.7%
35 - 39	34	42	32	-	-	1	109	5	23	9	-	-	1	38	-	147	10.5%
40 - 44	33	42	20	1	-	1	97	11	17	4	-	-	-	32	-	129	9.2%
45+	67	79	36	1	-	-	183	17	27	7	-	-	1	52	-	235	16.7%
Unk	-	-	-	-	-	-	-	-	-	-	-	-	-	-	-	-	0.0%
<b>Total</b>	223	474	236	10	1	10	954	76	303	65	-	-	7	451	-	1,405	
<b>Percent</b>	23.4%	49.7%	24.7%	1.0%	0.1%	1.0%		16.9%	67.2%	14.4%	0.0%	0.0%	1.6%				
<b>Percent Male</b>							67.9%	<b>Percent Female</b>							32.1%		

Total White	299	21.3%
Total African-American	777	55.3%
Total Hispanic	301	21.4%
Total Asian	10	0.7%
Total American Indian	1	0.1%
Total Unk Race/Ethnicity	17	1.2%
<b>Total</b>	<b>1,405</b>	

## Primary and Secondary Syphilis Case Percentages by Race/Ethnicity and Sex, 2007-2008

