



Texas Influenza Surveillance Report
2009-2010 Season/2010 MMWR Week 39
 (September 26, 2010–October 2, 2010)
 Report produced on 10/8/2010

Please note: 2009 influenza A (H1N1)-specific surveillance activities were discontinued after May 22, 2010. Limited surveillance for all influenza types and subtypes will continue throughout the summer.

During week 39 in Texas:

- Two (1.4%) specimens tested by NREVSS laboratories in Texas were positive for influenza B by antigen detection test.
- The percentage of visits for influenza-like illness as reported by ILINet providers in Texas was below the regional baseline.

Reports from Health Service Regions

Reports were received from all Health Service Regions (HSRs) for week 39. HSR 11 reported an increased level of flu activity compared to week 38. HSRs 1, 2/3, 4/5N, 7, and 8 reported the same level of flu activity compared to week 38. HSRs 6/5S and 9/10 reported a decreased level of flu activity compared to week 38. For a map of Health Service Regions please visit the following website:

<http://www.dshs.state.tx.us/regions/state.shtm>

Laboratory Results

Influenza

During week 39, six hospital laboratories and public health agencies across Texas reported conducting a total of 141 influenza tests (antigen, culture, and PCR) to the National Respiratory and Enteric Virus Surveillance System ([NREVSS](#)) sponsored by the Centers for Disease Control and Prevention (CDC). Forty-nine percent of the influenza tests reported to NREVSS were antigen detection tests; these tests cannot identify the subtype of influenza detected. The results from Texas participants in NREVSS are summarized in the table below.

	Week 39
No. of specimens tested	141
No. of positive specimens (%)	2 (1.4%)
Positive specimens by type/subtype	
Influenza A	0 (0%)
Subtyping performed	0 (0%)
A (2009 H1N1)	0 (0%)
A (H3N2)	0 (0%)
A (seasonal H1N1)	0 (0%)
Subtyping not performed	0 (0%)
Influenza B	2 (100%)

Additional influenza test results (rapid tests, culture, PCR) were reported from providers and public health departments throughout the state (see county map below).

Other Viruses

The NREVSS system collects information on a variety of respiratory viruses in addition to influenza including parainfluenza, respiratory syncytial virus (RSV), rhinovirus, human metapneumovirus (HMPV), and respiratory adenovirus. The results from week 39 are summarized below.

Virus	Number of Laboratories Testing	Tests Performed	Positive Tests	Percentage of Tests Positive
Adenovirus (respiratory)	4	59	3	5.08%
HMPV	2	49	0	0.00%
Parainfluenza	4	59	1	1.69%
Rhinovirus	2	42	15	35.71%
RSV	11	298	5	1.68%

Novel Influenza A Virus Infections

2009 influenza A (H1N1)-specific surveillance was discontinued after May 22, 2010. For final 2009 influenza A (H1N1)-specific reports please see the Texas Department of State Health Services (DSHS) influenza website (<http://www.texasflu.org>) and the CDC website (<http://www.cdc.gov/h1n1flu/>).

Antigenic Characterization

Since June 9, 2009, CDC has reported antigenic characterization results from 48 2009 influenza A (H1N1) viruses, 1 seasonal influenza A (H1N1) virus, and 2 influenza B viruses received from the Texas Department of State Health Services (DSHS) Laboratory.

Influenza Type/Subtype	Total number of Texas viruses characterized	Do the viruses match the vaccine strains?	
		Yes	No
2009 influenza A (H1N1)	48	48 (100%)	0 (0%)
Influenza A (H3N2)	0	n/a	n/a
Influenza A (H1N1) seasonal	1	1 (100%)	0 (0%)
Influenza B	2	2 (100%)	0 (0%)

The national antigenic characterization and antiviral resistance testing results may be found in the final CDC weekly flu report at <http://www.cdc.gov/flu/weekly/>. The DSHS Laboratory sends a representative sample of influenza viruses to the CDC throughout the flu season.

Antiviral Resistance

Since June 9, 2009, CDC has reported antiviral resistance testing results on 111 2009 influenza A (H1N1) isolates received from multiple Texas laboratories since April 26, 2009.

	Isolates Tested (n)	Resistant Viruses, Number (%)		Isolates Tested (n)	Resistant Viruses, Number (%)
		Oseltamivir	Zanamivir		Adamantanes
2009 influenza A (H1N1)	111	3 (3%)	0 (0)	42	42 (100%)
Influenza A (H3N2)	0	0 (0)	0 (0)	0	0 (0)
Influenza A (H1N1) (seasonal)	0	0 (0)	0 (0)	0	0 (0)
Influenza B	0	0 (0)	0 (0)	N/A*	N/A*

*Adamantanes are not effective against influenza B viruses.

Influenza-Associated Pediatric Mortality

No new influenza-associated pediatric fatalities were reported during week 39. There have been 33 influenza-associated pediatric fatalities reported in Texas since the beginning of the 2009-2010 influenza season, including 6 deaths during calendar year 2010.

Influenza-Associated Deaths in Pregnant and Postpartum Women

No new influenza-associated deaths were reported in pregnant or postpartum women during week 39.

DSHS is requesting reporting of influenza-associated deaths in pregnant or postpartum (up to 6 weeks) women during the summer of 2010 and continuing throughout the 2010-2011 influenza season. There has been 1 death reported since the beginning of the summer 2010. All influenza types and subtypes should be reported; a positive rapid influenza test is sufficient for confirmation.

School Closures and Institutional Outbreaks

No institutional outbreaks or school closures were reported during week 39. CDC released new guidance for summer camps on May 17, 2010. This can be found at <http://www.cdc.gov/h1n1flu/camp.htm>. DSHS has issued guidance for cases of ILI and novel influenza A (H1N1) in summer camps, schools, and congregate facilities. Please see www.texasflu.org for more information.

U.S. Outpatient Influenza-like Illness Surveillance Network

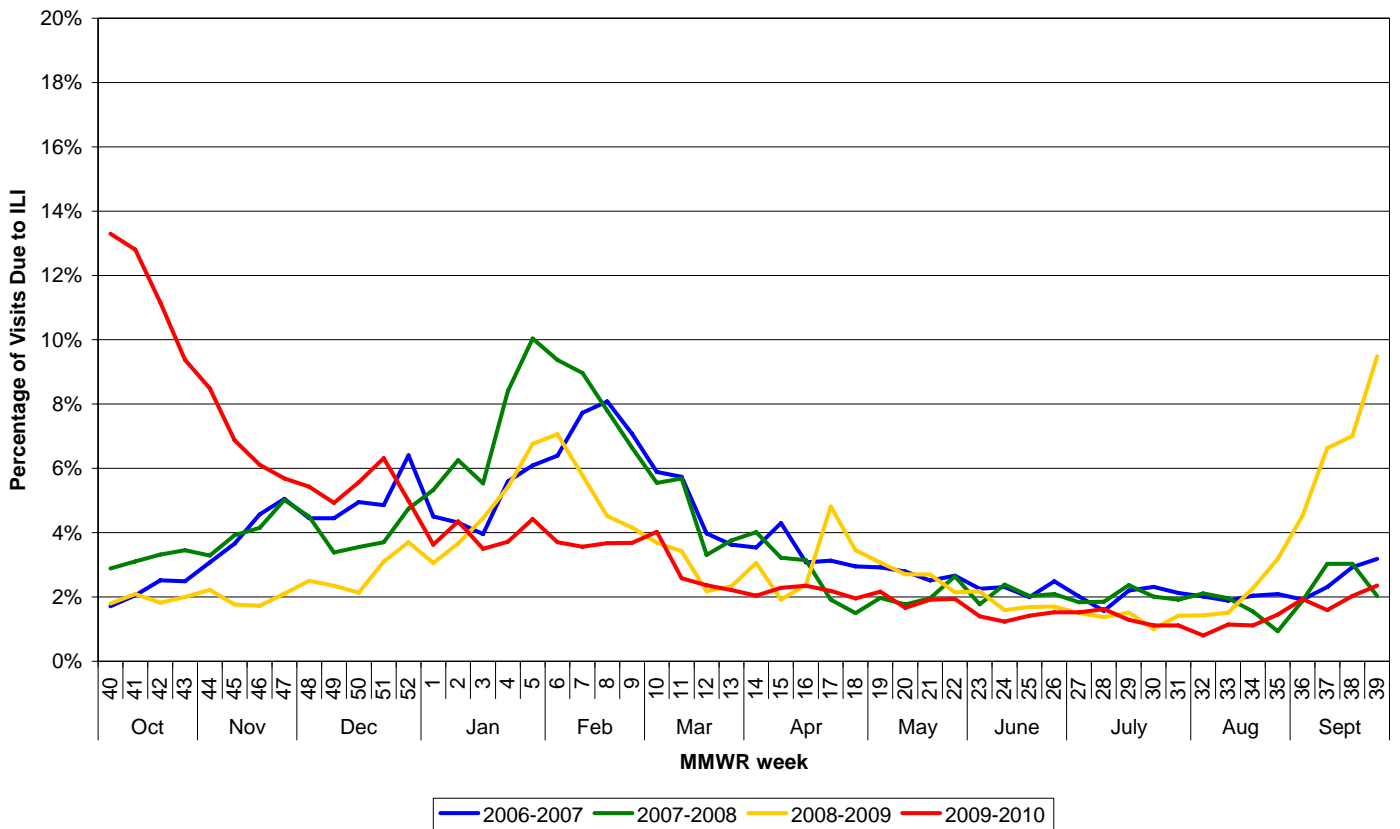
Forty-one providers in Texas reported data to the U.S. Outpatient Influenza-like Illness Surveillance Network (ILINet) (formerly known as the U.S. Influenza Sentinel Provider Surveillance System) on patients with influenza-like illness (ILI) and total patients seen for any reason during week 39. Of the 41 providers who saw patients, 24 (59%) saw at least one patient with ILI. Of all patient visits during this week, 2.35% were due to ILI. The ILI baseline for HHS Region 6 (Arkansas, Louisiana, New Mexico, Oklahoma, and Texas) of the United States is 4.6% for the 2009–2010 season. The baseline is the mean percentage of patient visits for ILI during non-influenza weeks for the previous three seasons plus two standard deviations.

Percentage of Visits for Influenza-like Illness reported by the
US Outpatient Influenza-like Illness Surveillance Network (ILINet) in Texas
(10/8/2010 09:20:00 AM)

Week	# Reporting	Age 0-4	Age 5-24	Age 25-49	Age 50-64	Age 65 and older	Total ILI	Total Patients	% ILI
200940	101	1411	2402	510	178	64	4565	34330	13.30%
200941	102	1411	2130	403	123	42	4109	32091	12.80%
200942	105	1343	1914	387	115	37	3796	34018	11.16%
200943	100	1112	1243	309	83	40	2787	29721	9.38%
200944	107	990	1386	344	72	24	2816	33163	8.49%
200945	105	709	1024	234	82	37	2086	30355	6.87%
200946	104	699	814	220	69	26	1828	29911	6.11%
200947	112	575	520	112	48	23	1278	22452	5.69%
200948	106	652	578	164	74	27	1495	27547	5.43%
200949	103	609	503	176	68	30	1386	28127	4.93%
200950	101	630	523	207	68	22	1450	26016	5.57%
200951	100	489	381	103	29	22	1024	16218	6.31%
200952	97	544	384	182	56	29	1195	23951	4.99%
201001	101	421	382	175	63	20	1061	29301	3.62%
201002	103	604	504	161	73	20	1362	31355	4.34%
201003	97	450	451	151	43	20	1115	31855	3.50%
201004	95	399	566	161	30	16	1172	31504	3.72%

Week	# Reporting	Age 0-4	Age 5-24	Age 25-49	Age 50-64	Age 65 and older	Total ILI	Total Patients	% ILI
201005	91	561	580	184	46	31	1402	31686	4.42%
201006	91	435	480	186	47	21	1169	31565	3.70%
201007	86	442	489	216	35	15	1197	33583	3.56%
201008	87	381	518	230	71	36	1236	33660	3.67%
201009	87	402	525	220	59	27	1233	33511	3.68%
201010	84	543	505	209	67	21	1345	33400	4.03%
201011	88	253	245	164	45	19	726	28136	2.58%
201012	87	211	289	162	44	23	729	30839	2.36%
201013	86	201	246	114	21	16	598	27060	2.21%
201014	87	213	210	132	33	15	603	29600	2.04%
201015	87	249	275	110	44	24	702	30726	2.28%
201016	84	268	318	100	22	15	723	30865	2.34%
201017	95	271	251	112	33	16	683	31199	2.19%
201018	90	203	238	115	36	19	611	31303	1.95%
201019	86	243	248	129	32	7	659	30408	2.17%
201020	76	146	169	102	22	13	452	27127	1.67%
201021	73	178	188	90	23	13	492	25662	1.92%
201022	60	107	184	87	17	6	401	20710	1.94%
201023	61	109	122	89	13	9	342	24553	1.39%
201024	58	72	140	58	12	3	285	23189	1.23%
201025	59	108	146	44	18	5	321	22644	1.42%
201026	58	106	120	66	16	13	321	21123	1.52%
201027	59	96	130	55	24	10	315	20706	1.52%
201028	54	78	137	94	14	8	331	20333	1.63%
201029	53	97	87	52	21	8	265	20646	1.28%
201030	50	87	70	64	20	1	242	21687	1.12%
201031	47	76	97	62	10	7	252	22640	1.11%
201032	43	44	73	49	13	2	181	22534	0.80%
201033	44	96	96	69	17	3	281	24477	1.15%
201034	44	103	89	64	19	6	281	25148	1.12%
201035	38	75	124	115	22	3	339	23381	1.45%
201036	42	118	136	120	30	14	418	21651	1.93%
201037	40	91	186	85	20	10	392	24593	1.59%
201038	41	109	196	136	43	14	498	24540	2.03%
201039	41	153	121	71	26	18	389	16533	2.35%

**Percentage of Visits Due to Influenza-Like Illness
Reported by Texas Participants in ILINet, 2006-2010 Seasons**

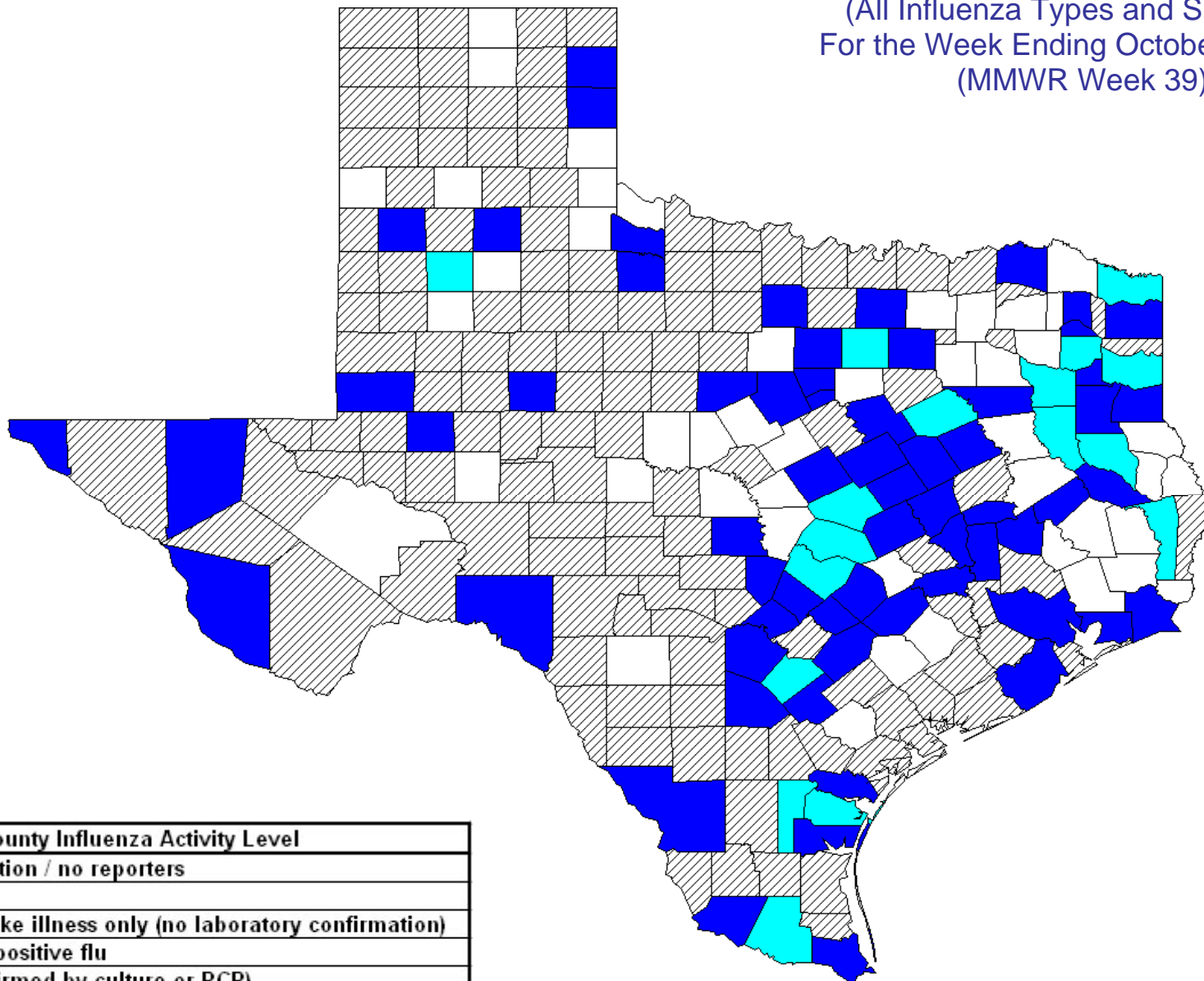



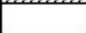





National Influenza Activity Map

The national influenza reporting season ended after May 22, 2010 (2010 MMWR week 20). National influenza reporting will resume on October 3, 2010. Archives for the U.S. flu weekly report (FluView) may be found at <http://www.cdc.gov/flu/weekly/fluactivity.htm>.

For more information on flu surveillance activities in the State of Texas, please visit the following website: <http://www.dshs.state.tx.us/idcu/disease/influenza/surveillance/>

Statewide Influenza Activity^{1,2}
 (All Influenza Types and Subtypes)
 For the Week Ending October 2, 2010³
 (MMWR Week 39)



County Influenza Activity Level	
	No information / no reporters
	No activity
	Influenza-like illness only (no laboratory confirmation)
	Rapid test positive flu
	Flu A (confirmed by culture or PCR)
	Flu B (confirmed by culture or PCR)
	Flu A and B (confirmed by culture or PCR)

¹Influenza activity level corresponds to current MMWR week only and does not reflect previous weeks' activity.

²The majority of influenza cases are not reportable by law to the Texas Department of State Health Services. This map contains data from sentinel sites and does not represent all influenza cases in the state.

³Positive laboratory results are reported according to specimen collection date or date received in the lab if the former is unknown.