

2000

Texas School Survey

www.tcada.state.tx.us

September 18, 2000

Student alcohol, drug use declines

Alcohol and drug use is declining among Texas students, according to a survey released Monday by the Texas Commission on Alcohol and Drug Abuse.

Some of the most dramatic decreases were seen in tobacco use. The percentage of students reporting they had used tobacco in the month before the survey fell 15 percent between 1998 and 2000. Among lower grades, the decrease was even greater. Seventh graders reported a 30 percent decline, and eighth graders reported a 19 percent drop.

“These survey results are another positive sign for our state and our students. When we help young Texans avoid alcohol and drugs, we are creating an environment in which our children can learn and succeed,” said Lt. Gov. Rick Perry. “This news is evidence that Texas parents, educators and legislators are working together to give all our children the foundation for a bright future.”

More than 200,000 Texas students in grades 4-12 participated in the survey, the largest of its kind in the nation. TCADA has been conducting the statewide survey every two years since 1988. Among the findings:

- Among grades 7-12, there was a 9 percent decline since 1998 in the percentage of students reporting they had used any illicit drug in the month before the survey. There also was a 17 percent decline in past-month inhalant use.

- Secondary students reported a 15 percent decline in past-month use of tobacco.

- Past-month use of marijuana fell 10 percent among secondary students, and past-month alcohol use dropped 5 percent.

“I am quite pleased by this downward trend in alcohol and drug use, but this survey also indicates that Texas must continue to focus on creating healthy and safe environments for our children,” said Health and Human Services Commissioner Don A. Gilbert. “As a state, we need to remain dedicated to looking for new and better ways to ensure that parents and educators have all the tools they need to prevent substance abuse.”

The results are proof that the state’s prevention efforts are working, say TCADA leaders.

“Four years ago, the Commission made a commitment to the Legislature, the governor and the people of Texas to make preventing drug abuse this agency’s top priority,” said TCADA Board Chairman James C. Oberwetter. “Today’s news is a strong sign that Texas is headed in the right direction, and it provides evidence of the wonderful work taking place in schools and communities all across this state.”

TCADA Executive Director Jay Kimbrough said the survey also points out the need for more emphasis on preventing underage drinking.

“Clearly, the state’s prevention efforts are working,” Kimbrough said. “But we want to see the same dramatic declines in teen alcohol use that we’re seeing today in tobacco and marijuana use.”

Elementary survey: Dramatic downturn

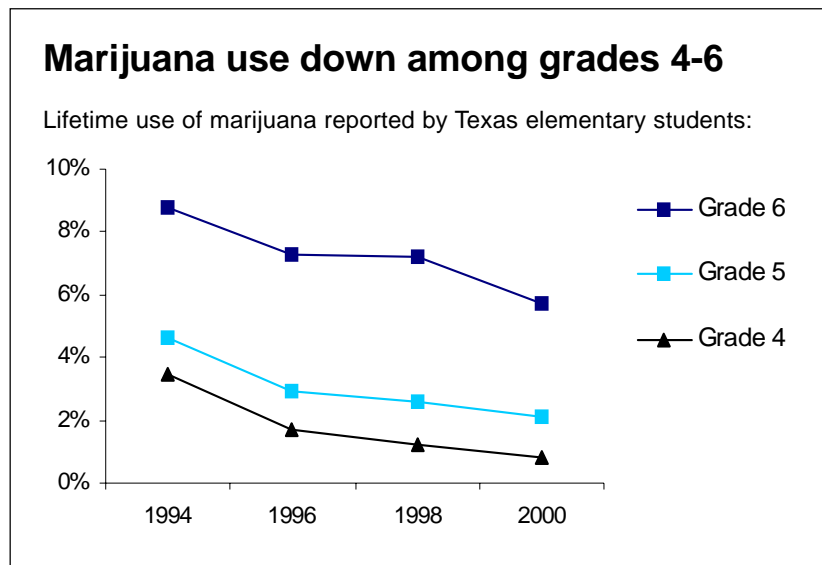
In the spring of 2000, TCADA surveyed 81,875 students in grades 4-6 from 70 Texas school districts. Among the findings:

■ The percentage of students who said they had ever used tobacco decreased 23 percent in 2000 to 12.5 percent from 16.3 percent in 1998. It was the most dramatic two-year decline in this category since the elementary survey began in 1990.

■ In 2000, 2.8 percent of students said they had tried marijuana, a drop of 22 percent from 1998. Marijuana use among this age group peaked in 1994, but has fallen 50 percent since that time.

■ In 2000, 27.5 percent students reported they had tried alcohol, a 7 percent decrease from 1998. Alcohol use among this age group has shown a steady decline throughout the past decade.

■ The percentage of students who said they have used inhalants fell 13 percent from 1998 to 10.7 percent in 2000.



Prevalence of substance use among Texas elementary students

	Ever Used 1990	Ever Used 1992	Ever Used 1994	Ever Used 1996	Ever Used 1998	Ever Used 2000	School Year 1990	School Year 1992	School Year 1994	School Year 1996	School Year 1998	School Year 2000
Tobacco	21.1%	18.8%	18.9%	17.1%	16.3%	12.5%	13.3%	11.5%	12.0%	10.8%	10.3%	7.3%
Grade 4	13.3%	10.8%	11.1%	9.3%	9.3%	6.8%	8.2%	6.5%	7.1%	5.5%	6.0%	3.8%
Grade 5	19.8%	18.3%	17.7%	16.3%	15.0%	11.4%	13.2%	11.9%	10.9%	9.9%	8.9%	6.7%
Grade 6	30.5%	27.4%	27.9%	25.8%	24.8%	19.9%	18.7%	16.1%	18.1%	17.0%	16.3%	11.6%
Alcohol	41.8%	33.4%	32.6%	30.2%	29.6%	27.5%	28.8%	20.5%	22.6%	20.5%	20.2%	18.9%
Grade 4	31.0%	25.2%	25.1%	21.7%	21.5%	19.1%	21.1%	14.7%	17.3%	14.5%	14.4%	13.1%
Grade 5	38.5%	28.6%	30.3%	28.6%	28.4%	25.8%	28.1%	18.0%	20.3%	19.0%	18.8%	17.5%
Grade 6	56.5%	46.4%	42.5%	40.3%	39.2%	38.4%	37.7%	28.8%	30.2%	28.1%	27.6%	26.4%
Inhalants	15.3%	16.4%	9.8%	9.8%	12.3%	10.7%	11.4%	10.9%	5.7%	7.1%	9.2%	7.8%
Grade 4	12.7%	14.6%	8.4%	8.7%	10.4%	9.8%	9.5%	10.8%	4.2%	6.3%	7.6%	7.1%
Grade 5	9.6%	10.5%	8.0%	8.3%	11.1%	8.8%	7.1%	7.1%	4.8%	6.2%	8.1%	6.3%
Grade 6	24.0%	24.0%	13.0%	12.4%	15.4%	13.8%	17.8%	14.8%	8.0%	8.8%	11.8%	10.0%
Marijuana	2.7%	1.7%	5.6%	4.0%	3.6%	2.8%	1.8%	1.0%	1.9%	2.7%	2.6%	2.1%
Grade 4	1.1%	0.8%	3.5%	1.7%	1.2%	0.8%	0.7%	0.4%	0.7%	0.9%	0.9%	0.5%
Grade 5	1.8%	0.9%	4.6%	2.9%	2.6%	2.1%	1.3%	0.6%	1.2%	1.8%	1.9%	1.7%
Grade 6	5.4%	3.4%	8.8%	7.3%	7.2%	5.7%	3.6%	2.0%	3.7%	5.4%	5.2%	4.2%

Secondary survey: Big declines in lower grades

In the spring of 2000, TCADA surveyed 127,380 students in grades 7-12 from 71 Texas school districts. Among the findings:

Tobacco use

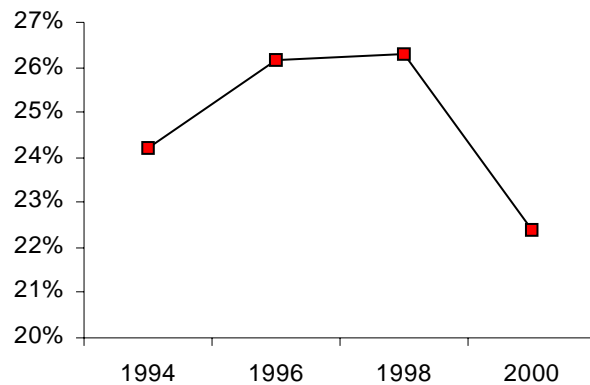
■ The percentage of students reporting they had used tobacco in the month before the survey fell 15 percent between 1998 and 2000. Among lower grades, the decrease was even greater. Seventh graders reported a 30 percent decline, and eighth graders reported a 19 percent drop.

■ Lifetime use of tobacco fell 7 percent between 1998 and 2000 to 51.1 percent. Again, the biggest declines were seen among younger students. The percentage of seventh graders reporting they had tried tobacco at some point in their lives fell 18 percent from 1998 to 2000.

■ In 2000, 7 percent of seniors reported smoking more than a half a pack of cigarettes per day in the month before the survey, compared to 9 percent in 1998.

Decline in past-month tobacco use

Past-month use of tobacco reported by Texas secondary students:



About the survey

The 2000 Texas School Survey is the nation's largest survey of its kind. The survey examines alcohol and drug usage among students, as well as student attitudes, extracurricular involvement and other behaviors. The statewide survey is conducted every two years by Texas Commission on Alcohol and Drug Abuse in conjunction with the Public Policy Research Institute of Texas A&M University.

For more information, contact Stephanie Goodman, TCADA Public Information Office, (512) 349-6610.

Alcohol use

■ Alcohol continues to be the most widely used substance among Texas students with 71 percent of students reporting they had used alcohol at some point in their lives. This percentage has remained relatively steady in recent years; however, the rate fell 7 percent among seventh graders. Seventh graders also reported a 14 percent drop in past-month use of alcohol.

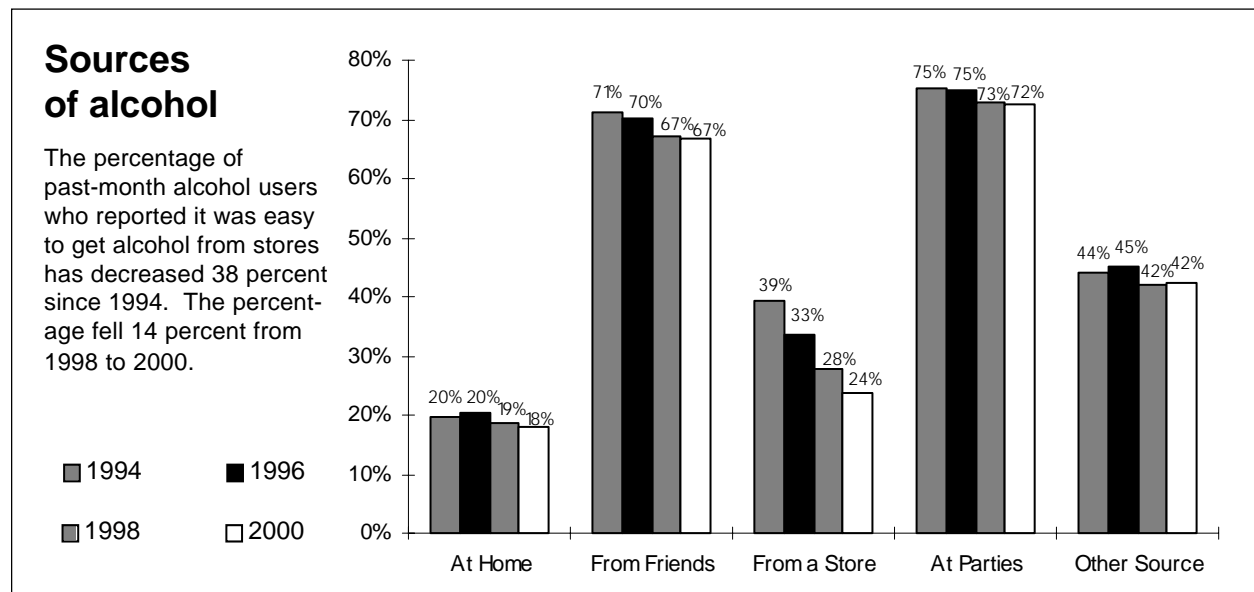
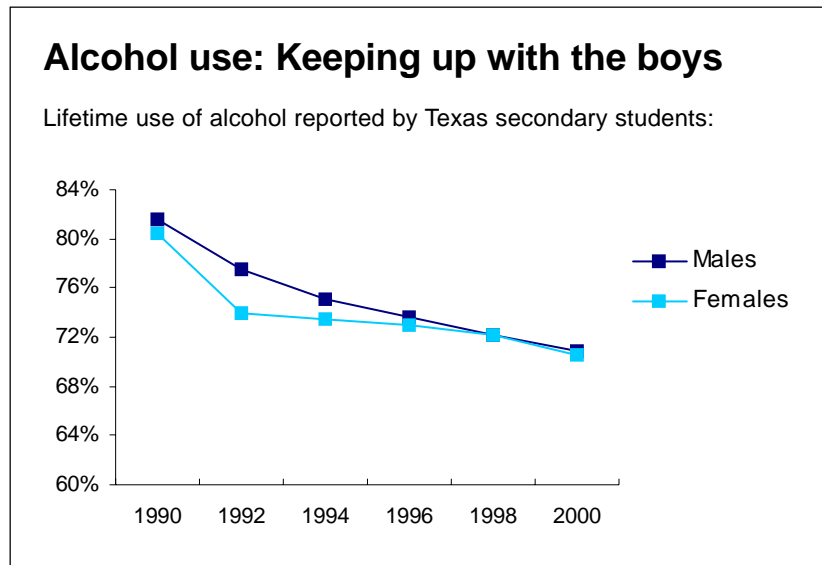
■ More than 9 percent of students said they had attended class while drunk at least once during the past school year.

■ Binge drinking, defined as having five or more drinks on one occasion, was reported by 27 percent of students.

■ One in four seniors said they had driven a car after having a good bit to drink at least once during the past year. This represents 80,000 impaired drivers on Texas roads each year.

■ Among seventh graders, 74 percent reported that their parents strongly disapproved of underage drinking; however, the rate fell to 54 percent among seniors.

■ Only 22 percent of students who said their parents disapproved of teen alcohol use reported past-month drinking, compared to 55 percent of their peers who reported their parents approved of teen alcohol use.



Other trends

■ The percentage of 7-12 graders reporting they had ever used any illicit drug decreased to 33.7 percent in 2000, a 7 percent drop from 1998. Again, lower grades showed a larger decrease. The rate fell 21 percent among seventh graders, and there was a 15 percent drop among eighth graders.

■ There was a 10 percent decline in the percentage of students reporting they had used marijuana in the month before the survey, to 13.7 percent in 2000 from 15.2 percent in 1998. Among seventh graders, there was a 21 percent decline in past-month marijuana use.

■ Inhalant abuse showed significant declines among virtually all grades for both lifetime and past-month use. The overall rate for lifetime use fell 14 percent, and there was a 22 percent decrease reported for seventh graders.

■ While the numbers remained steady from 1998, cocaine and crack use remains a problem among Texas students. In 2000, 9 percent of secondary students reported they had tried cocaine or crack, and 3.1 percent reported using these substances in the month before the survey.

■ Statistically significant declines were reported for lifetime usage rates of heroin, hallucinogens, uppers, downers and rohypnol.

■ While lifetime usage rates for ecstasy remained stable, students reported an increase in past-month usage of that club drug.

Age of first use

Average age of first use of substances as reported by Texas secondary students:

Inhalants	12.2
Cigarettes	12.3
Beer	12.4
Wine Coolers	12.7
Wine	12.7
Smokeless Tobacco	12.9
Liquor	13.3
Marijuana	13.4
Heroin	13.4
Steroids	13.6
Rohypnol	13.7
Crack	13.7
Downers	13.9
Uppers	14.0
Hallucinogens	14.4
Cocaine	14.4
Ecstasy	14.8

**Prevalence and Recency of Substance Use, by Grade:
Texas Secondary Students, 1988-2000**

	Ever Used 1988	Ever Used 1990	Ever Used 1992	Ever Used 1994	Ever Used 1996	Ever Used 1998	Ever Used 2000	Past Month 1988	Past Month 1990	Past Month 1992	Past Month 1994	Past Month 1996	Past Month 1998	Past Month 2000
Tobacco**	-	56.2%	54.3%	54.5%	55.2%	54.7%	51.1%	-	22.9%	20.9%	24.2%	26.2%	26.3%	22.4%
Grade 7	-	42.4%	42.8%	40.1%	41.3%	40.2%	33.0%	-	15.9%	14.8%	15.8%	17.0%	15.6%	10.9%
Grade 8	-	52.7%	50.0%	51.9%	51.9%	50.2%	45.0%	-	20.9%	17.1%	23.3%	22.6%	21.2%	17.2%
Grade 9	-	59.4%	57.5%	57.2%	57.7%	57.0%	51.8%	-	23.1%	23.1%	25.6%	27.5%	27.2%	22.6%
Grade 10	-	58.0%	58.3%	59.6%	60.1%	59.9%	57.5%	-	23.1%	21.9%	26.9%	29.6%	29.8%	25.2%
Grade 11	-	61.5%	58.6%	60.7%	61.4%	61.7%	62.4%	-	27.0%	24.1%	26.5%	30.8%	32.4%	30.5%
Grade 12	-	66.5%	62.3%	62.7%	63.3%	63.5%	62.4%	-	29.7%	26.9%	30.5%	33.6%	36.0%	32.7%
Alcohol	75.5%	81.0%	75.6%	74.1%	73.3%	72.1%	70.7%	42.8%	43.6%	37.0%	39.4%	37.3%	38.0%	36.1%
Grade 7	58.5%	68.7%	58.2%	57.6%	56.4%	54.7%	51.0%	28.0%	29.2%	23.5%	24.0%	23.1%	22.5%	19.4%
Grade 8	68.7%	76.7%	70.9%	69.3%	68.0%	66.8%	64.7%	31.6%	36.6%	30.4%	34.3%	31.6%	30.6%	29.7%
Grade 9	75.9%	81.3%	78.0%	76.2%	76.1%	74.3%	72.0%	41.0%	41.9%	38.5%	41.0%	38.2%	38.9%	36.2%
Grade 10	83.0%	85.1%	82.4%	81.1%	79.0%	78.5%	77.7%	49.2%	48.0%	41.5%	44.5%	42.1%	44.0%	41.1%
Grade 11	84.5%	87.9%	83.9%	82.8%	82.2%	81.0%	81.2%	55.1%	51.6%	44.4%	48.3%	45.7%	46.6%	46.0%
Grade 12	86.4%	90.4%	86.1%	85.5%	84.6%	82.8%	83.2%	57.5%	60.3%	49.9%	52.0%	50.8%	51.8%	50.6%
Inhalants#	30.0%	24.1%	23.2%	18.7%	19.8%	22.0%	18.9%	7.0%	6.2%	5.3%	4.9%	5.1%	8.2%	6.8%
Grade 7	33.1%	24.6%	25.9%	20.2%	22.1%	25.0%	19.5%	11.8%	9.9%	9.2%	7.1%	8.1%	11.5%	9.2%
Grade 8	32.0%	25.4%	26.1%	23.8%	23.9%	26.2%	22.9%	9.4%	9.7%	8.0%	7.5%	7.4%	11.4%	9.9%
Grade 9	30.7%	25.6%	23.3%	19.4%	21.3%	23.0%	18.7%	6.8%	6.6%	3.7%	5.2%	4.8%	8.4%	6.6%
Grade 10	29.3%	23.9%	22.3%	17.4%	18.2%	20.3%	18.4%	6.0%	4.7%	4.0%	3.7%	3.6%	6.2%	4.8%
Grade 11	26.6%	22.0%	20.8%	14.0%	15.5%	18.4%	18.0%	5.3%	2.4%	2.9%	2.1%	2.4%	5.3%	5.1%
Grade 12	25.5%	22.1%	18.4%	14.5%	14.4%	16.5%	14.5%	3.3%	2.1%	2.0%	2.0%	2.2%	4.3%	3.5%
Any Illicit Drug	39.1%	25.1%	22.4%	27.8%	33.7%	36.1%	33.7%	17.1%	9.5%	8.4%	13.7%	17.7%	17.0%	15.4%
Grade 7	25.0%	11.1%	11.4%	14.6%	19.0%	18.4%	14.5%	12.8%	5.6%	5.0%	7.4%	10.2%	8.5%	6.6%
Grade 8	33.0%	17.6%	15.0%	23.5%	28.4%	29.1%	24.7%	16.6%	7.7%	5.1%	12.4%	15.6%	14.2%	11.9%
Grade 9	36.0%	25.6%	23.9%	30.2%	37.3%	38.3%	33.5%	15.4%	10.3%	9.9%	15.9%	20.7%	18.7%	16.0%
Grade 10	42.9%	27.8%	28.1%	32.7%	39.0%	44.3%	40.7%	18.4%	10.0%	10.3%	16.4%	20.4%	20.9%	18.1%
Grade 11	49.1%	33.7%	29.2%	35.0%	41.5%	45.1%	48.1%	20.6%	11.2%	11.2%	15.5%	20.5%	20.7%	21.1%
Grade 12	54.3%	39.9%	31.8%	36.3%	42.5%	47.2%	48.4%	20.2%	13.5%	10.3%	16.0%	20.5%	20.8%	21.6%
Marijuana	31.5%	22.6%	19.7%	25.3%	31.2%	34.5%	32.2%	11.5%	7.8%	6.8%	12.0%	15.9%	15.2%	13.7%
Grade 7	18.8%	9.4%	9.9%	12.7%	16.6%	16.7%	13.2%	7.6%	4.6%	3.9%	6.3%	8.7%	7.1%	5.6%
Grade 8	26.6%	15.1%	11.9%	21.1%	25.5%	27.1%	23.2%	11.7%	5.9%	4.0%	10.6%	13.7%	12.4%	10.4%
Grade 9	28.1%	23.1%	21.2%	27.8%	34.9%	36.6%	31.8%	10.5%	8.2%	8.3%	14.3%	18.8%	16.9%	14.2%
Grade 10	34.4%	24.2%	24.5%	29.9%	36.1%	42.6%	39.1%	12.4%	8.1%	8.3%	14.2%	18.4%	19.0%	16.1%
Grade 11	40.7%	31.2%	26.0%	32.0%	39.1%	43.8%	46.5%	14.3%	9.7%	8.7%	13.9%	18.8%	18.8%	18.9%
Grade 12	45.7%	37.5%	29.3%	34.0%	40.5%	46.0%	47.0%	13.9%	11.5%	8.4%	14.3%	18.5%	19.0%	19.6%
Marijuana Only##	15.2%	12.7%	10.8%	14.8%	14.4%	18.3%	17.5%	4.2%	2.8%	2.6%	5.8%	5.5%	6.0%	5.5%
Grade 7	8.9%	5.9%	6.1%	8.4%	8.0%	9.3%	7.6%	3.6%	2.2%	1.9%	3.8%	3.5%	3.2%	2.6%
Grade 8	14.0%	8.9%	6.7%	12.7%	11.5%	14.7%	12.8%	4.9%	2.4%	1.4%	5.5%	4.8%	5.2%	4.4%
Grade 9	14.3%	12.9%	11.1%	16.9%	16.0%	19.4%	16.3%	3.9%	3.1%	3.0%	7.7%	6.5%	6.7%	5.3%
Grade 10	16.0%	13.4%	13.7%	17.0%	16.6%	22.3%	22.1%	4.4%	2.5%	3.4%	6.1%	6.4%	7.4%	6.4%
Grade 11	19.9%	17.9%	14.0%	18.1%	18.9%	23.5%	24.9%	4.8%	3.6%	3.2%	6.2%	6.8%	7.1%	7.2%
Grade 12	20.1%	19.8%	15.8%	18.3%	18.0%	23.4%	26.0%	3.5%	2.9%	2.6%	5.7%	5.5%	6.7%	7.8%
Cocaine/Crack	6.7%	5.8%	5.0%	5.6%	7.1%	9.3%	9.0%	2.3%	1.6%	1.5%	1.7%	2.4%	3.5%	3.1%
Grade 7	4.0%	1.8%	2.3%	2.8%	3.6%	4.4%	3.9%	1.1%	0.8%	1.0%	1.0%	1.2%	1.7%	1.4%
Grade 8	5.2%	3.9%	3.4%	4.7%	5.6%	7.3%	6.7%	2.7%	1.5%	0.8%	1.4%	2.0%	2.9%	2.5%
Grade 9	5.0%	6.2%	6.1%	5.9%	8.0%	9.8%	8.5%	1.5%	1.5%	2.0%	2.0%	2.9%	3.8%	2.9%
Grade 10	7.0%	6.1%	6.1%	6.5%	8.1%	11.4%	10.0%	2.2%	1.4%	1.7%	2.0%	2.7%	4.2%	3.7%
Grade 11	8.8%	7.8%	5.6%	6.9%	8.5%	11.8%	14.2%	2.9%	1.6%	1.6%	2.0%	2.7%	4.5%	4.8%
Grade 12	11.6%	10.2%	7.5%	8.3%	10.6%	13.2%	13.4%	4.2%	2.9%	1.8%	2.4%	3.6%	4.6%	4.0%

** Due to differences in methodology, 1988 figures can not be compared in this category.

Use of Inhalants has been adjusted, based on all data from the survey to include all appropriate responses.

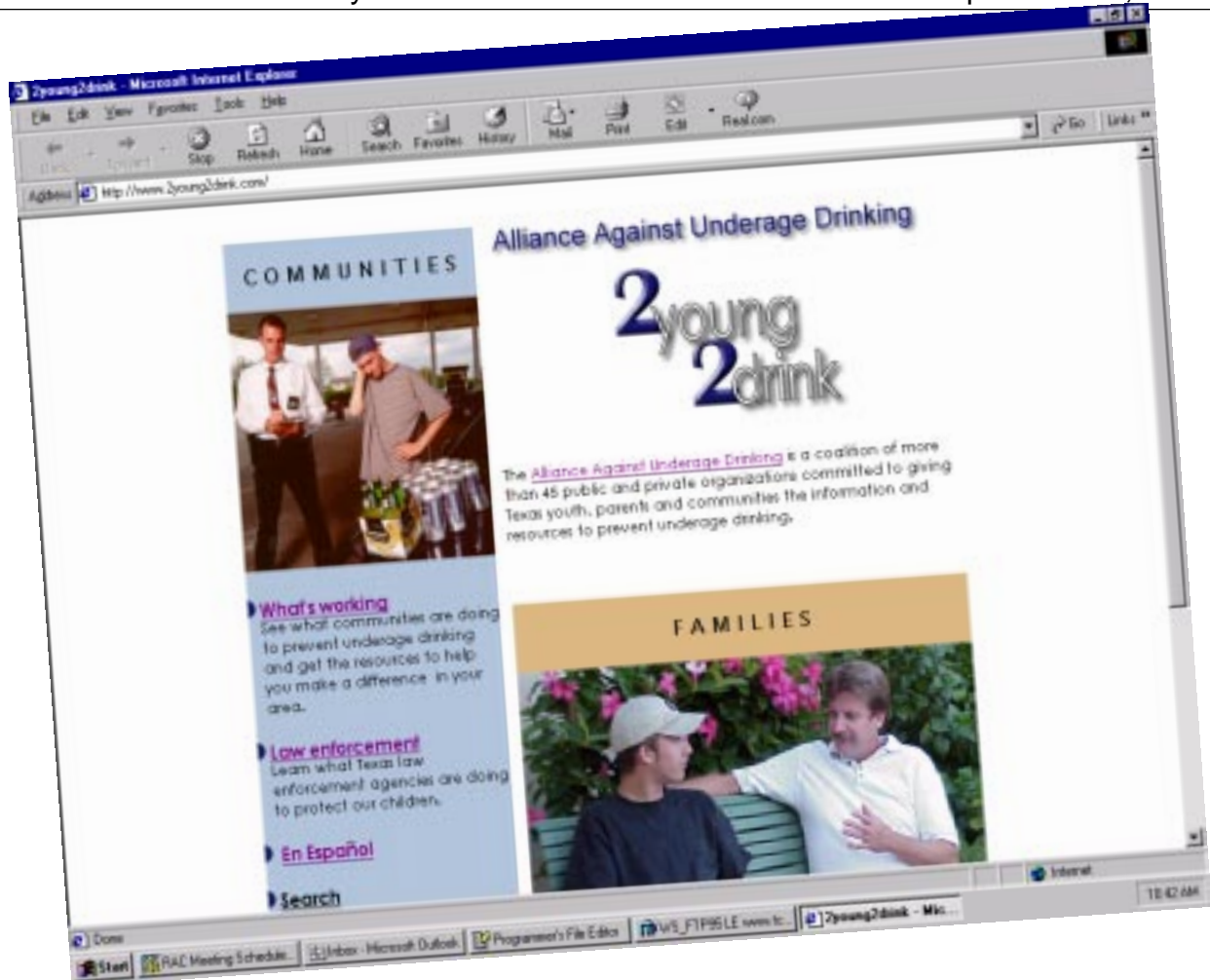
Use of "marijuana only" indicates using no other illicit drug besides marijuana.

Prevalence and Recency of Use: 1988 -- 2000 (cont.)

	Ever Used 1988	Ever Used 1990	Ever Used 1992	Ever Used 1994	Ever Used 1996	Ever Used 1998	Ever Used 2000	Past Month 1988	Past Month 1990	Past Month 1992	Past Month 1994	Past Month 1996	Past Month 1998	Past Month 2000
Hallucinogens	6.6%	4.6%	4.9%	5.9%	7.4%	7.3%	5.4%	2.4%	1.6%	1.5%	1.9%	2.4%	2.5%	1.8%
Grade 7	3.4%	1.3%	1.7%	2.3%	2.4%	2.5%	1.5%	1.2%	0.8%	0.7%	0.7%	0.9%	1.0%	0.3%
Grade 8	4.2%	2.9%	2.2%	4.3%	4.7%	4.2%	2.5%	1.6%	1.2%	0.7%	1.4%	1.6%	1.6%	0.9%
Grade 9	5.7%	4.6%	6.0%	5.7%	8.0%	7.4%	5.4%	2.0%	1.7%	1.6%	1.9%	3.1%	2.9%	1.8%
Grade 10	6.7%	5.3%	6.0%	7.8%	9.5%	9.1%	6.4%	2.2%	2.1%	2.0%	2.7%	3.0%	3.3%	2.5%
Grade 11	9.3%	6.2%	6.9%	8.0%	10.3%	10.5%	9.2%	3.6%	1.7%	2.2%	2.6%	2.7%	3.5%	2.9%
Grade 12	11.7%	8.8%	8.2%	9.8%	12.5%	12.3%	9.5%	4.2%	2.5%	2.0%	2.6%	3.5%	3.4%	2.9%
Uppers	17.1%	7.2%	6.5%	7.0%	7.9%	8.2%	6.7%	5.8%	2.1%	1.8%	2.3%	2.6%	3.1%	2.7%
Grade 7	10.5%	3.0%	2.2%	2.5%	2.8%	3.0%	1.7%	4.5%	1.4%	1.1%	1.1%	1.1%	1.3%	0.6%
Grade 8	12.3%	5.2%	5.0%	5.5%	5.4%	5.6%	3.6%	5.4%	2.2%	1.6%	2.3%	2.1%	2.2%	1.6%
Grade 9	14.5%	7.8%	6.5%	7.6%	8.3%	8.7%	7.2%	4.9%	2.7%	1.9%	2.6%	3.0%	3.5%	3.2%
Grade 10	20.3%	8.6%	8.0%	9.2%	10.7%	10.8%	8.7%	7.0%	2.1%	2.1%	3.0%	3.3%	4.2%	3.4%
Grade 11	22.9%	8.9%	9.4%	9.6%	10.7%	10.8%	10.8%	6.8%	1.7%	2.4%	2.3%	3.0%	4.1%	4.4%
Grade 12	25.0%	11.1%	9.6%	9.9%	12.1%	12.0%	9.5%	6.8%	2.3%	2.3%	2.6%	3.4%	3.8%	3.4%
Downers	13.3%	4.4%	4.5%	4.5%	5.6%	6.6%	5.8%	3.9%	1.2%	1.2%	1.4%	1.8%	2.6%	2.6%
Grade 7	11.5%	2.2%	2.3%	2.1%	2.1%	2.5%	1.5%	4.0%	1.0%	1.0%	0.7%	0.9%	1.0%	0.6%
Grade 8	12.1%	3.8%	4.0%	4.0%	3.9%	4.3%	2.9%	5.5%	1.7%	1.1%	1.5%	1.6%	1.7%	1.2%
Grade 9	11.8%	4.8%	4.0%	5.0%	6.3%	7.1%	6.6%	3.8%	1.4%	0.9%	1.8%	2.1%	2.9%	3.5%
Grade 10	14.3%	4.9%	5.9%	5.6%	7.3%	8.8%	7.4%	3.9%	1.0%	1.5%	1.7%	2.2%	3.4%	3.1%
Grade 11	15.4%	5.1%	6.1%	5.4%	7.2%	8.9%	9.9%	3.2%	0.8%	1.9%	1.2%	2.0%	3.4%	3.9%
Grade 12	15.3%	6.5%	5.5%	6.0%	8.5%	9.4%	8.0%	2.7%	1.3%	1.0%	1.7%	2.6%	3.2%	3.5%
Rohypnol	NA	NA	NA	NA	NA	6.7%	4.5%	NA	NA	NA	NA	NA	2.6%	1.7%
Grade 7	NA	NA	NA	NA	NA	4.1%	2.4%	NA	NA	NA	NA	NA	1.9%	1.1%
Grade 8	NA	NA	NA	NA	NA	6.0%	4.3%	NA	NA	NA	NA	NA	2.7%	1.9%
Grade 9	NA	NA	NA	NA	NA	7.3%	4.9%	NA	NA	NA	NA	NA	3.2%	2.0%
Grade 10	NA	NA	NA	NA	NA	7.9%	5.0%	NA	NA	NA	NA	NA	2.9%	1.8%
Grade 11	NA	NA	NA	NA	NA	7.4%	5.8%	NA	NA	NA	NA	NA	2.3%	1.8%
Grade 12	NA	NA	NA	NA	NA	7.7%	4.8%	NA	NA	NA	NA	NA	2.4%	1.3%
Steroids	NA	1.7%	1.7%	1.9%	2.1%	2.1%	2.3%	NA	* %	* %	0.5%	0.6%	0.7%	0.8%
Grade 7	NA	1.5%	1.8%	1.7%	2.0%	2.3%	2.3%	NA	0.5%	0.8%	0.5%	0.7%	0.7%	1.0%
Grade 8	NA	1.6%	1.3%	2.0%	2.1%	2.4%	2.5%	NA	0.7%	* %	0.6%	0.6%	0.8%	0.8%
Grade 9	NA	1.4%	1.9%	1.9%	2.0%	2.0%	2.0%	NA	* %	0.5%	0.6%	0.6%	0.6%	0.7%
Grade 10	NA	1.8%	1.9%	1.8%	2.0%	1.9%	2.1%	NA	* %	* %	* %	0.5%	0.6%	0.7%
Grade 11	NA	1.9%	1.4%	1.7%	2.3%	2.1%	2.7%	NA	* %	* %	* %	0.8%	0.8%	0.8%
Grade 12	NA	2.2%	1.6%	2.2%	2.3%	2.3%	2.2%	NA	* %	* %	0.5%	0.6%	0.8%	0.7%
Ecstasy	NA	4.1%	2.6%	2.5%	5.4%	4.5%	4.5%	NA	1.3%	0.6%	0.7%	1.5%	1.4%	1.9%
Grade 7	NA	0.9%	1.5%	1.2%	1.7%	1.4%	1.5%	NA	* %	0.5%	* %	0.7%	0.5%	0.6%
Grade 8	NA	1.6%	0.8%	1.7%	3.4%	2.8%	2.5%	NA	0.7%	* %	0.6%	1.2%	1.1%	1.1%
Grade 9	NA	3.8%	2.4%	2.3%	5.7%	4.4%	4.7%	NA	1.4%	0.6%	0.6%	2.1%	1.6%	2.0%
Grade 10	NA	4.4%	2.7%	3.4%	6.7%	5.4%	5.5%	NA	1.6%	0.7%	0.9%	1.8%	1.7%	2.3%
Grade 11	NA	6.2%	3.7%	3.4%	7.5%	6.4%	7.5%	NA	1.6%	0.9%	0.8%	1.6%	2.0%	3.2%
Grade 12	NA	9.1%	5.8%	4.0%	9.4%	7.7%	6.7%	NA	2.5%	0.6%	1.0%	1.8%	2.0%	3.0%
Heroin	1.4%	NA	NA	NA	NA	2.4%	1.6%	* %	NA	NA	NA	NA	0.7%	0.5%
Grade 7	1.4%	NA	NA	NA	NA	2.6%	1.8%	* %	NA	NA	NA	NA	0.9%	0.7%
Grade 8	2.2%	NA	NA	NA	NA	2.8%	1.9%	0.7%	NA	NA	NA	NA	0.9%	0.7%
Grade 9	0.9%	NA	NA	NA	NA	2.3%	1.6%	* %	NA	NA	NA	NA	0.6%	0.6%
Grade 10	1.1%	NA	NA	NA	NA	2.1%	1.4%	* %	NA	NA	NA	NA	0.7%	0.4%
Grade 11	1.3%	NA	NA	NA	NA	2.3%	1.5%	* %	NA	NA	NA	NA	0.6%	0.2%
Grade 12	1.5%	NA	NA	NA	NA	2.3%	1.5%	* %	NA	NA	NA	NA	0.6%	0.4%

NA: Not Available

* Less than 0.5%



Alliance launches Internet site

The Alliance Against Underage Drinking, which involves more than 40 public and private organizations, has launched a new Internet site. The new site, www.2young2drink.com, will serve as a toolbox for community groups by providing information, statistics, a media kit, activities for youths and links to other resources.

The development of the site was a collaborative effort among the Alliance partners and pulls together resources from numerous state agencies and private organizations. The Alliance also developed new resources specifically for the 2young.2drink site.

The 2young.2drink site includes information in Spanish.

For more information, contact Stephanie Goodman, TCADA Public Information Office, (512) 349-6610