



**2022 DSHS Arbovirus Activity Report  
Week #42 (ending October 22, 2022)  
Report Date: October 25, 2022**

**Table 1. 2022 Arbovirus Activity Summary, Texas, Week 42**

Arbovirus	Mosquito Pools	Avian	Veterinary	Sentinel Chicken	Human					
					Febrile Illness	Neurologic Illness	Severe Dengue	TOTAL (HUMAN)	Deaths	PVD <sup>2</sup>
California Serogroup <sup>1</sup>								0		
Chikungunya								0		
Dengue					28			28		
Eastern Equine Encephalitis			1					0		
St. Louis Encephalitis	2							0		
West Nile	378	1	2		2	20		22	3	7
Zika								0		
<b>TOTAL REPORTS</b>	<b>380</b>	<b>1</b>	<b>3</b>	<b>0</b>	<b>30</b>	<b>20</b>	<b>0</b>	<b>50</b>	<b>3</b>	<b>7</b>

<sup>1</sup>California Serogroup includes California encephalitis, Jamestown Canyon, Keystone, La Crosse, snowshoe hare, and trivittatus viruses.

<sup>2</sup>PVD - Presumptive viremic blood donors are people who had no symptoms at the time of donating blood through a blood collection agency, but whose blood tested positive when screened for the presence of West Nile virus or Zika virus. Unless they meet the case reporting criteria, they are not counted as a case for official reporting purposes and are not included in the "Total (HUMAN)" column.

Note: Human mortality from arboviral conditions is aggregated and reported monthly once documentation has been received and verified.

For more detailed information about West Nile virus, including past weekly and annual reports, please visit <http://www.dshs.texas.gov/idcu/disease/arboviral/westNile/>

For more detailed information about Zika, please visit <http://www.texaszika.org/>

**Table 2. 2022 Aedes-Associated Arbovirus Activity by County†, Week 42**

County	CHIKV		DENV*		ZIKV		
	M	H	M	H	M	H	PVD
Cameron				1			
Collin				3			
Dallas				7			
Ector				1			
Harris				1			
Hays				1			
Montgomery				1			
Tarrant				4			
Travis				6			
Williamson				3			
Total Number of Reports	0	0	0	28	0	0	0

M - mosquito H- human

CHIKV - Chikungunya Virus

DENV - Dengue Virus

ZIKV - Zika Virus

\* All reported cases are imported.

†County level data is not reported for conditions with <5 cases reported in a year.

**Table 3. 2022 Other Arbovirus Activity by County†, Week 42**

County	CAL		EEEV				SLEV			WNV							
	M	H	M	V	SC	H	M	SC	H	M	A	V	SC	H			
														WNF	WNND	PVD‡	TOTAL
Bexar										6					1		1
Brazoria										1							0
Collin										19							0
Dallas										47					2		2
Denton										17						1	0
El Paso							2			8					5		5
Ellis										2							0
Grayson										0		1					0
Grimes				1						0							0
Harris										47	1				2	1	2
Johnson										5							0
Kleberg										1							0
Lubbock										5							0
Montgomery										186				1	9	5	10
Randall										0		1					0
Tarrant										24				1			1
Travis										6							0
Wharton										0					1		1
Wichita										2							0
Williamson										4							0
Total Number of Reports	0	0	0	1	0	0	2	0	0	380	1	2	0	2	20	7	22

M - mosquito A-avian V-veterinary SC- sentinel chicken H- human WNF - West Nile Fever WNND - West Nile Neuroinvasive Disease

CAL - California Serogroup Viruses

EEEV - Eastern Equine Encephalitis Virus

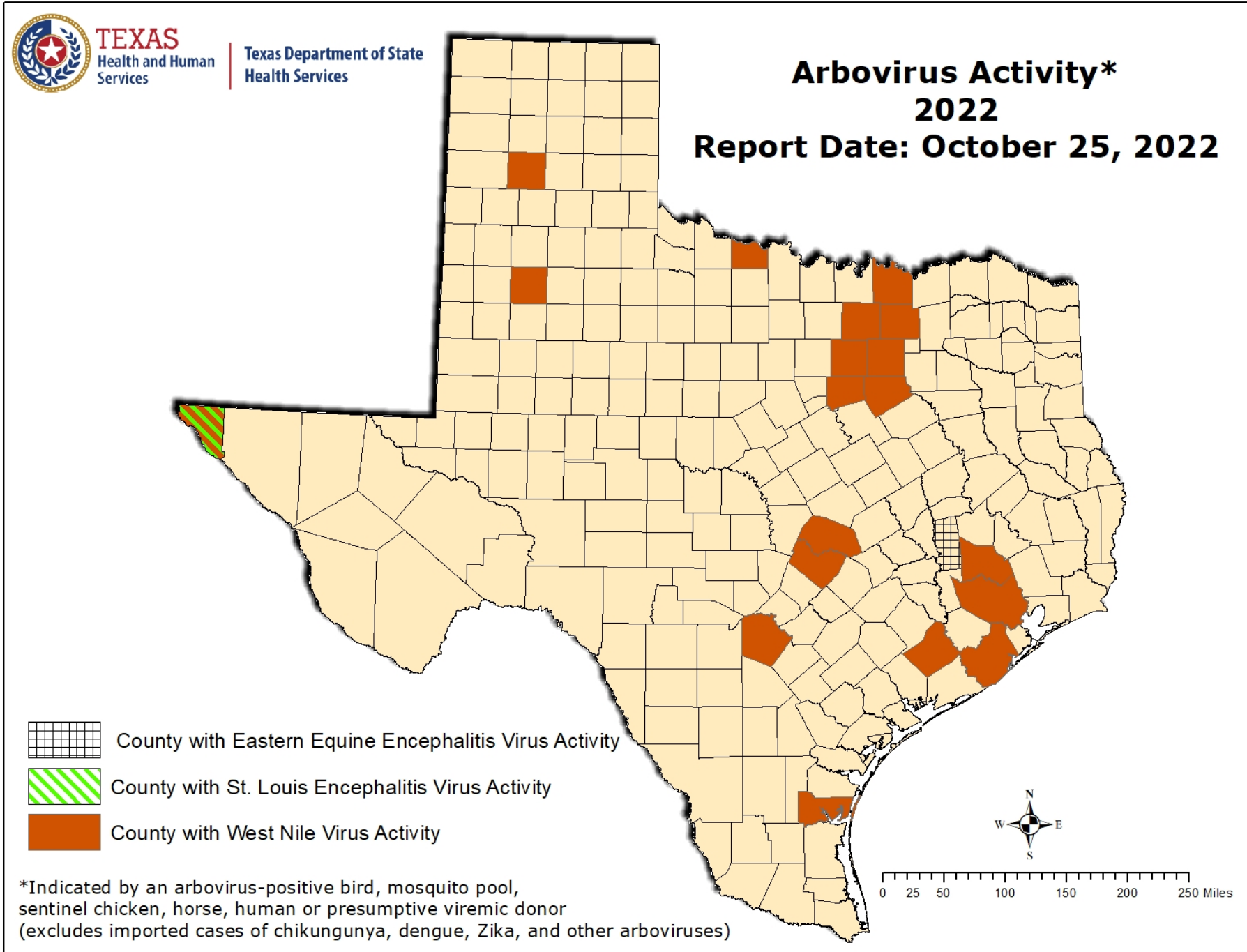
SLEV - St. Louis Encephalitis Virus

WNV - West Nile Virus

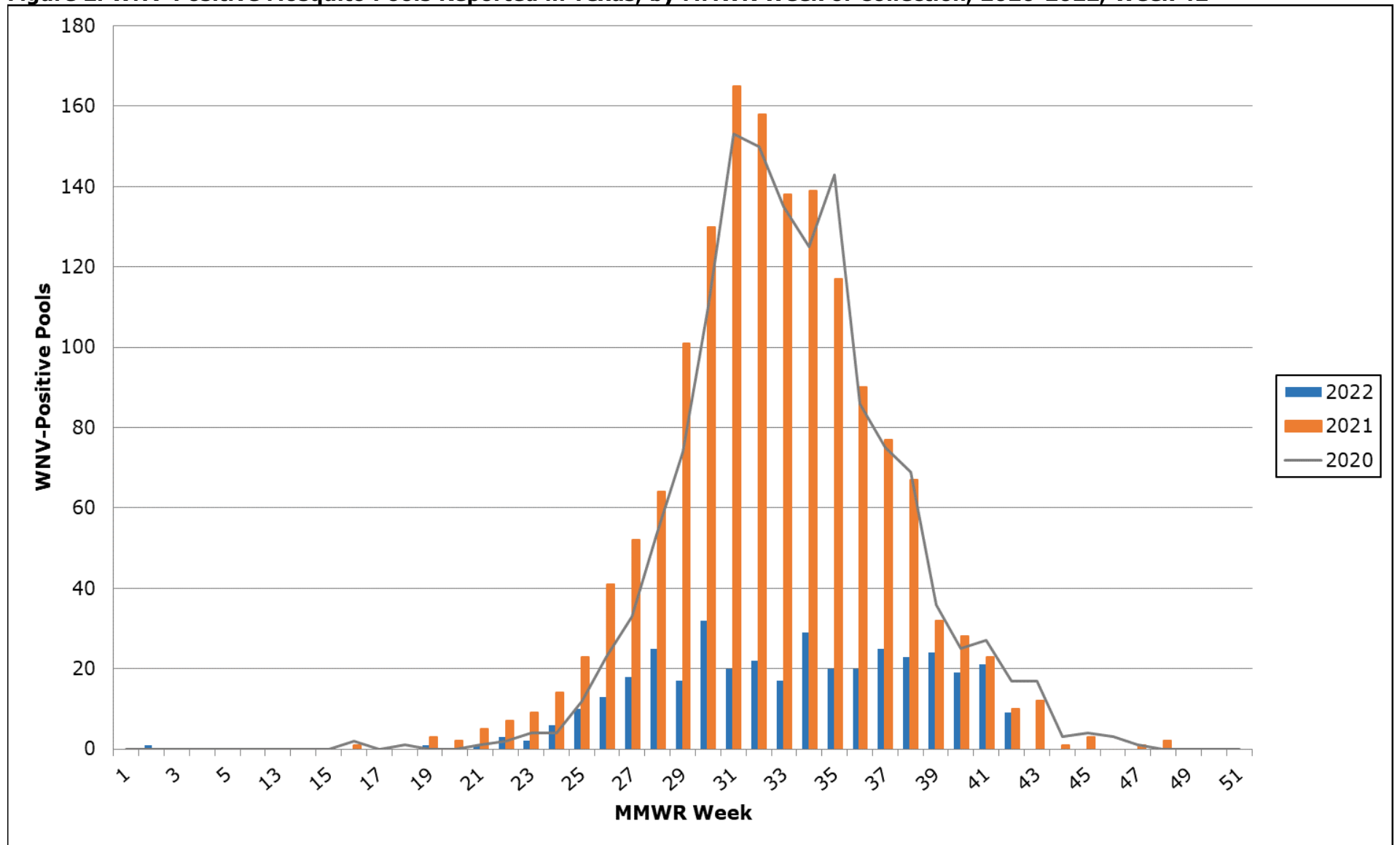
†County level data is not reported for conditions with <5 cases reported in a year.

‡PVDs are not included in the "Total" column.

Figure 1. Texas Counties Reporting Arbovirus Activity, Week 42



**Figure 2. WNV-Positive Mosquito Pools Reported in Texas, by MMWR Week of Collection, 2020-2022, Week 42**



**Figure 3. Human Cases of West Nile Virus Reported in Texas, by MMWR Week of Onset, 2020-2022, Week 42**

