



**2023 DSHS Arbovirus Activity Report  
Week #40 (ending October 7, 2023)  
Report Date: October 10, 2023**

**Table 1. 2023 Arbovirus Activity Summary, Texas, Week 40**

| Arbovirus                         | Mosquito Pools | Avian    | Veterinary | Sentinel Chicken | Human           |                    |               |               |          |                  |
|-----------------------------------|----------------|----------|------------|------------------|-----------------|--------------------|---------------|---------------|----------|------------------|
|                                   |                |          |            |                  | Febrile Illness | Neurologic Illness | Severe Dengue | TOTAL (HUMAN) | Deaths   | PVD <sup>2</sup> |
| California Serogroup <sup>1</sup> |                |          |            |                  |                 |                    |               | 0             |          |                  |
| Chikungunya                       |                |          |            |                  |                 |                    |               | 0             |          |                  |
| Dengue                            |                |          |            |                  | 22              |                    | 1             | 23            |          |                  |
| Eastern Equine Encephalitis       |                |          |            |                  |                 |                    |               | 0             |          |                  |
| St. Louis Encephalitis            | 11             |          |            | 1                |                 |                    |               | 0             |          |                  |
| West Nile                         | 777            |          | 5          | 6                | 11              | 43                 |               | 54            | 6        | 27               |
| Zika                              |                |          |            |                  |                 |                    |               | 0             |          |                  |
| <b>TOTAL REPORTS</b>              | <b>788</b>     | <b>0</b> | <b>5</b>   | <b>7</b>         | <b>33</b>       | <b>43</b>          | <b>1</b>      | <b>77</b>     | <b>6</b> | <b>27</b>        |

<sup>1</sup>California Serogroup includes California encephalitis, Jamestown Canyon, Keystone, La Crosse, snowshoe hare, and trivittatus viruses.

<sup>2</sup>PVD - Presumptive viremic blood donors are people who had no symptoms at the time of donating blood through a blood collection agency, but whose blood tested positive when screened for the presence of West Nile virus or Zika virus. Unless they meet the case reporting criteria, they are not counted as a case for official reporting purposes and are not included in the "Total (HUMAN)" column.

Note: Human mortality from arboviral conditions is aggregated and reported monthly once documentation has been received and verified.

For more detailed information about West Nile virus, including past weekly and annual reports, please visit <https://www.dshs.texas.gov/mosquito-borne-diseases/dshs-arbovirus-weekly-activity-reports>

For more detailed information about Zika, please visit <http://www.texaszika.org/>

**Table 2. 2023 Aedes-Associated Arbovirus Activity by County†, Week 40**

| County                  | CHIKV |   | DENV |    | ZIKV |   |     |
|-------------------------|-------|---|------|----|------|---|-----|
|                         | M     | H | M    | H  | M    | H | PVD |
| Collin                  |       |   |      | 3  |      |   |     |
| Dallas*                 |       |   |      | 4  |      |   |     |
| Denton                  |       |   |      | 1  |      |   |     |
| Fort Bend               |       |   |      | 3  |      |   |     |
| Galveston               |       |   |      | 1  |      |   |     |
| Hays                    |       |   |      | 1  |      |   |     |
| Montgomery              |       |   |      | 1  |      |   |     |
| Refugio                 |       |   |      | 1  |      |   |     |
| Tarrant                 |       |   |      | 5  |      |   |     |
| Travis                  |       |   |      | 3  |      |   |     |
| Total Number of Reports | 0     | 0 | 0    | 23 | 0    | 0 | 0   |

M- mosquito H- human PVD- Presumptive viremic blood donors

CHIKV - Chikungunya Virus

DENV - Dengue Virus

ZIKV - Zika Virus

\* One case acquired by mosquito transmission in Val Verde County

†County level data is not reported for conditions with <5 cases reported in a year.

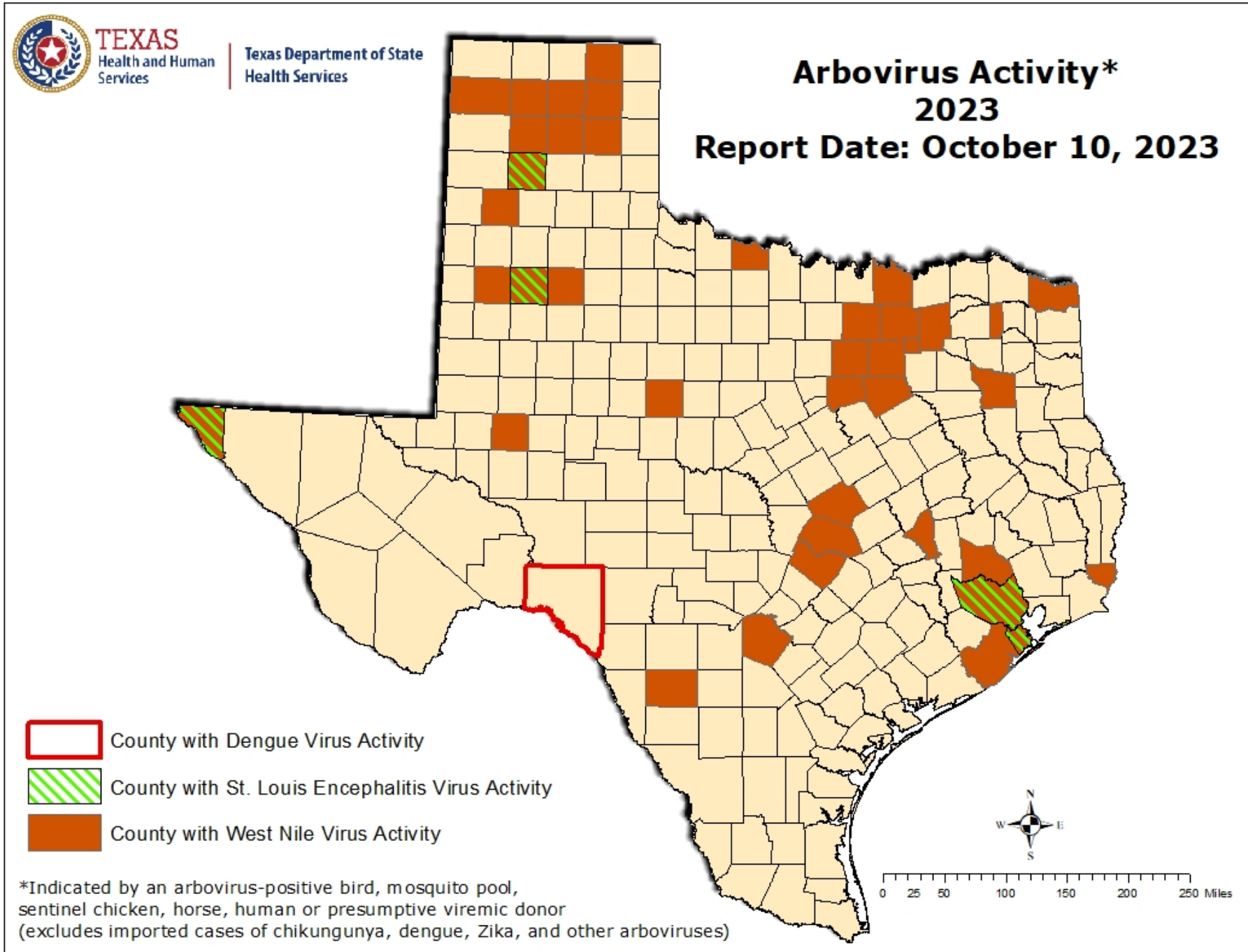
**Table 3. 2023 Other Arbovirus Activity by County†, Week 40**

| County     | CAL |   | EEEV |   |    |   | SLEV |    |   | WNV |   |   |    |     |      |      |       |    |
|------------|-----|---|------|---|----|---|------|----|---|-----|---|---|----|-----|------|------|-------|----|
|            | M   | H | M    | V | SC | H | M    | SC | H | M   | A | V | SC | H   |      |      |       |    |
|            |     |   |      |   |    |   |      |    |   |     |   |   |    | WNF | WNND | PVD‡ | TOTAL |    |
| Bell       |     |   |      |   |    |   |      |    |   | 30  |   |   |    |     |      | 1    |       | 1  |
| Bexar      |     |   |      |   |    |   |      |    |   | 9   |   |   |    |     |      | 3    | 1     | 3  |
| Bowie      |     |   |      |   |    |   |      |    |   | 0   |   |   |    |     |      | 1    |       | 1  |
| Brazoria   |     |   |      |   |    |   |      |    |   | 3   |   |   |    |     |      |      |       | 0  |
| Brazos     |     |   |      |   |    |   |      |    |   | 1   |   |   |    |     |      |      |       | 0  |
| Carson     |     |   |      |   |    |   |      |    |   | 0   |   |   |    |     |      |      | 2     | 0  |
| Castro     |     |   |      |   |    |   |      |    |   | 0   |   | 1 |    |     |      |      |       | 0  |
| Collin     |     |   |      |   |    |   |      |    |   | 10  |   |   |    |     | 1    |      | 1     | 1  |
| Crosby     |     |   |      |   |    |   |      |    |   | 0   |   |   |    |     | 1    |      |       | 1  |
| Dallas     |     |   |      |   |    |   |      |    |   | 203 |   |   |    |     | 3    | 14   | 1     | 17 |
| Denton     |     |   |      |   |    |   |      |    |   | 17  |   |   |    |     |      | 2    | 2     | 2  |
| El Paso    |     |   |      |   |    |   |      | 1  |   | 10  |   |   |    |     |      | 3    | 1     | 3  |
| Ellis      |     |   |      |   |    |   |      |    |   | 7   |   |   |    |     |      |      |       | 0  |
| Franklin   |     |   |      |   |    |   |      |    |   | 0   |   |   |    |     |      |      | 1     | 0  |
| Galveston  |     |   |      |   |    |   |      |    | 1 | 0   |   |   | 6  |     |      |      |       | 0  |
| Gray       |     |   |      |   |    |   |      |    |   | 0   |   | 1 |    |     |      |      |       | 0  |
| Grayson    |     |   |      |   |    |   |      |    |   | 1   |   |   |    |     |      |      |       | 0  |
| Harris     |     |   |      |   |    |   |      | 1  |   | 48  |   |   |    |     | 1    |      | 3     | 1  |
| Hartley    |     |   |      |   |    |   |      |    |   | 0   |   |   |    |     |      |      | 1     | 0  |
| Hockley    |     |   |      |   |    |   |      |    |   | 0   |   |   |    |     |      | 1    |       | 1  |
| Hunt       |     |   |      |   |    |   |      |    |   | 14  |   |   |    |     |      | 1    |       | 1  |
| Hutchison  |     |   |      |   |    |   |      |    |   | 0   |   |   |    |     |      |      | 1     | 0  |
| Johnson    |     |   |      |   |    |   |      |    |   | 7   |   |   |    |     |      |      |       | 0  |
| Lubbock    |     |   |      |   |    |   |      | 3  |   | 57  |   |   |    |     |      | 1    | 5     | 1  |
| Midland    |     |   |      |   |    |   |      |    |   | 6   |   |   |    |     |      |      |       | 0  |
| Montgomery |     |   |      |   |    |   |      |    |   | 50  |   |   |    |     | 1    | 3    |       | 4  |
| Moore      |     |   |      |   |    |   |      |    |   | 0   |   |   |    |     |      |      | 1     | 0  |
| Ochiltree  |     |   |      |   |    |   |      |    |   | 0   |   |   |    |     |      | 1    |       | 1  |
| Orange     |     |   |      |   |    |   |      |    |   | 1   |   |   |    |     |      |      |       | 0  |
| Potter     |     |   |      |   |    |   |      |    |   | 10  |   |   |    |     | 2    |      | 1     | 2  |
| Randall    |     |   |      |   |    |   |      | 6  |   | 27  |   | 2 |    |     | 1    |      | 4     | 1  |
| Roberts    |     |   |      |   |    |   |      |    |   | 0   |   | 1 |    |     |      |      |       | 0  |
| Rockwall   |     |   |      |   |    |   |      |    |   | 1   |   |   |    |     |      |      |       | 0  |

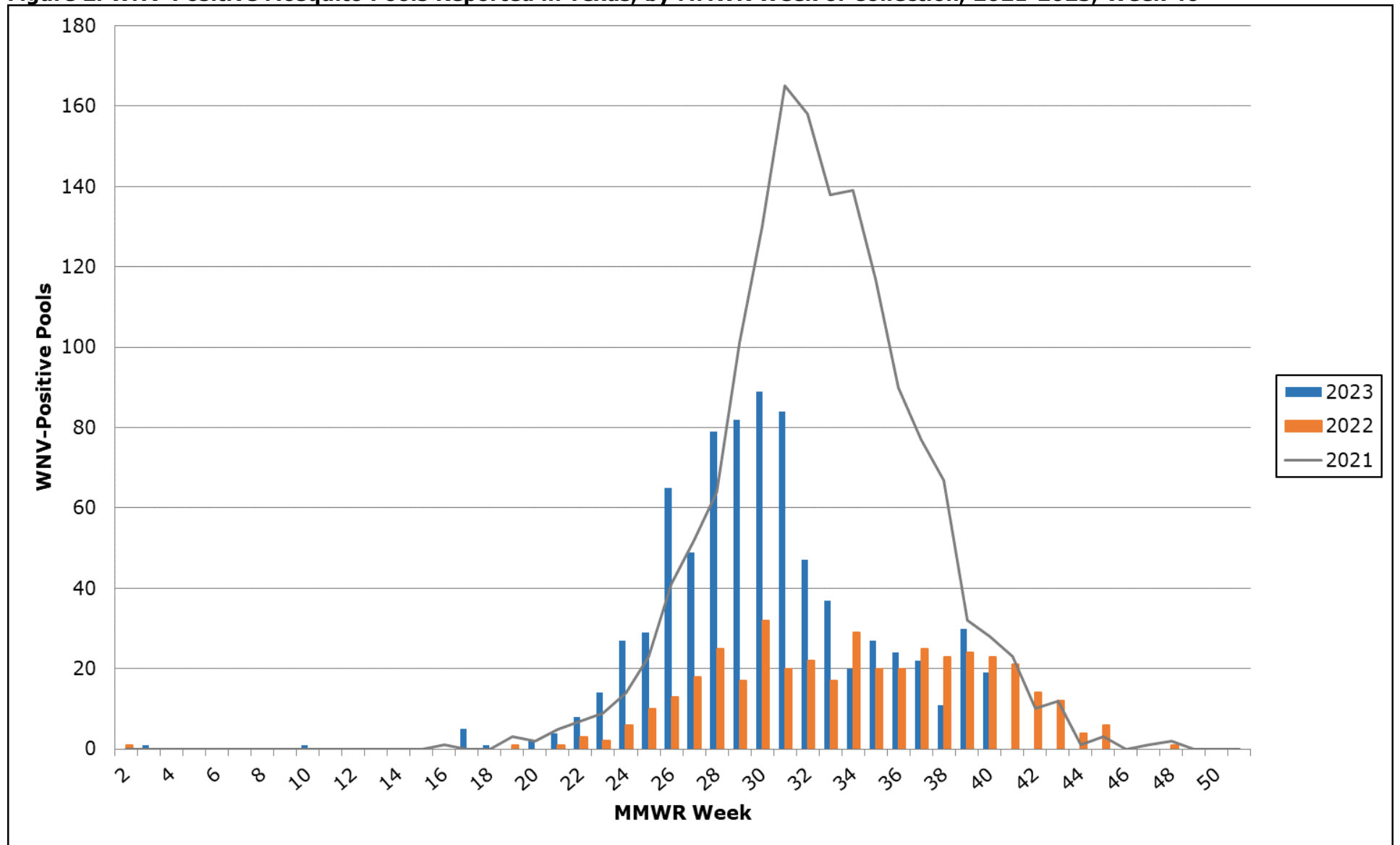
|                         |   |   |   |   |   |   |    |   |   |     |   |   |   |    |    |    |    |
|-------------------------|---|---|---|---|---|---|----|---|---|-----|---|---|---|----|----|----|----|
| Smith                   |   |   |   |   |   |   |    |   |   | 0   |   |   |   |    | 1  |    | 1  |
| Tarrant                 |   |   |   |   |   |   |    |   |   | 202 |   |   |   | 1  | 7  | 1  | 8  |
| Taylor                  |   |   |   |   |   |   |    |   |   | 1   |   |   |   |    | 1  |    | 1  |
| Travis                  |   |   |   |   |   |   |    |   |   | 30  |   |   |   |    | 1  | 1  | 1  |
| Wichita                 |   |   |   |   |   |   |    |   |   | 6   |   |   |   |    |    |    | 0  |
| Williamson              |   |   |   |   |   |   |    |   |   | 26  |   |   |   |    | 1  |    | 1  |
| Zavala                  |   |   |   |   |   |   |    |   |   | 0   |   |   |   |    | 1  |    | 1  |
| Total Number of Reports | 0 | 0 | 0 | 0 | 0 | 0 | 11 | 1 | 0 | 777 | 0 | 5 | 6 | 11 | 43 | 27 | 54 |

M- mosquito A- avian V- veterinary SC- sentinel chicken H- human WNF- West Nile Fever WNND- West Nile Neuroinvasive Disease  
PVD- Presumptive viremic blood donors  
CAL - California Serogroup Viruses  
EEEV - Eastern Equine Encephalitis Virus  
SLEV - St. Louis Encephalitis Virus  
WNV - West Nile Virus  
†County level data is not reported for conditions with <5 cases reported in a year.  
‡PVDs are not included in the "Total" column.

Figure 1. Texas Counties Reporting Arbovirus Activity, Week 40



**Figure 2. WNV-Positive Mosquito Pools Reported in Texas, by MMWR Week of Collection, 2021-2023, Week 40**



**Figure 3. Human Cases of West Nile Virus Reported in Texas, by MMWR Week of Onset, 2021-2023, Week 40**

