



Weekly Flu Surveillance Report

Week 17 - April 21st - April 27th, 2024

Disclaimer

Most cases of influenza are not reportable in the state of Texas, thus the data in this report was collected from hospitals, clinics, and schools throughout the region who have agreed to voluntarily submit data.

Definitions

ILI: Influenza-Like Illness. This is an illness that resembles the flu, but has not been confirmed. **Rapid:** These tests are typically done in-house to quickly test for influenza. **PCR:** These tests are generally more precise than rapid tests and are performed at the DSHS state lab and many commercial labs to confirm a case of influenza.

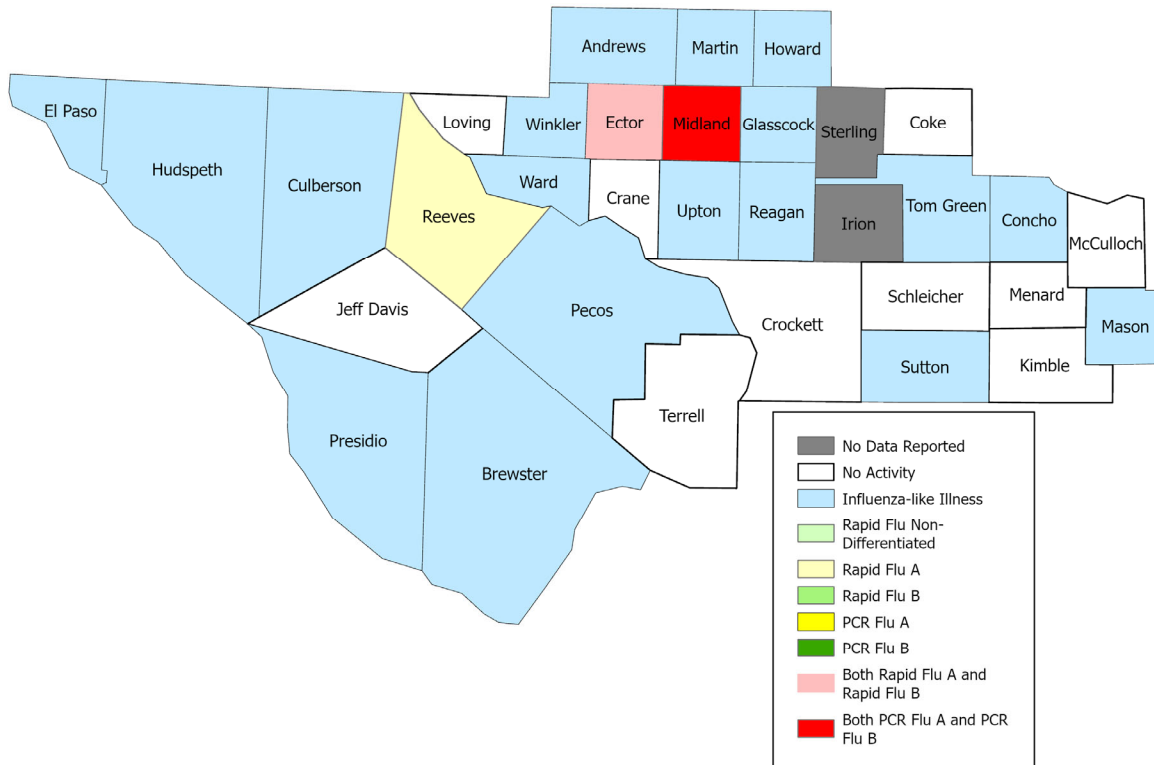
Summary Data

Condition	Week 17	Week 16	Week 15
Number of Counties Reporting (36 total)	↑ 34	33	35
Number of Counties Reporting ILI	→ 16	16	17
Number of Counties Reporting High Levels of ILI*	↑ 5	3	5
Number of Counties Reporting Flu A	→ 3	3	8
Number of Counties Reporting Flu B	↓ 2	6	7
Number of Counties Reporting Flu A & Flu B	↓ 2	3	6

The arrows represent changes from the previous week. A sideways arrow means there was no change in that condition.

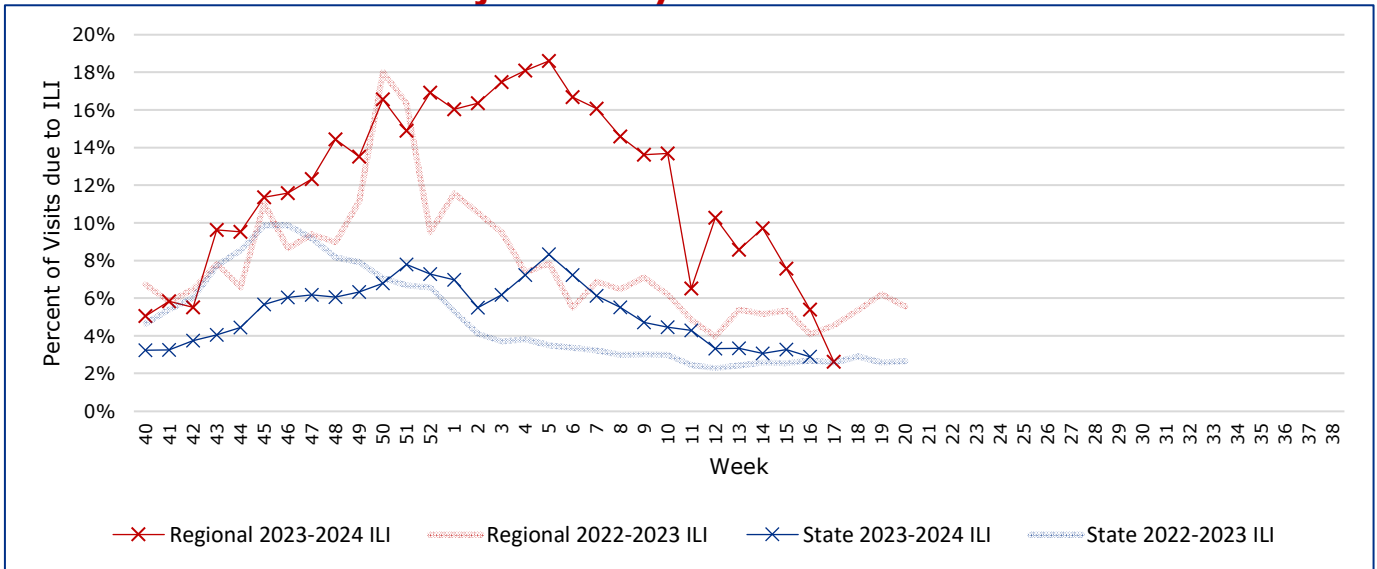
*Counties with total percent of visits due to ILI above 4.0% for the week are considered to have high/abnormal levels.

Map of Regional Flu Activity



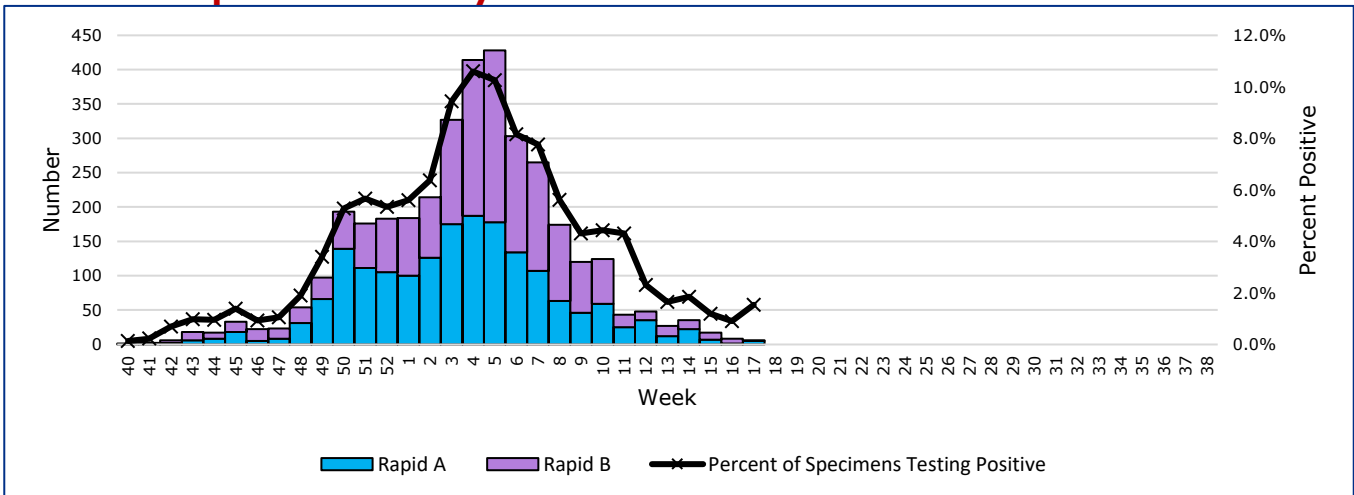
The map above depicts the previous week's reports of flu or influenza-like illness activity in each county. The legend on the bottom right of the map describes the meaning of each color.

Influenza-Like Illness Projections by Week



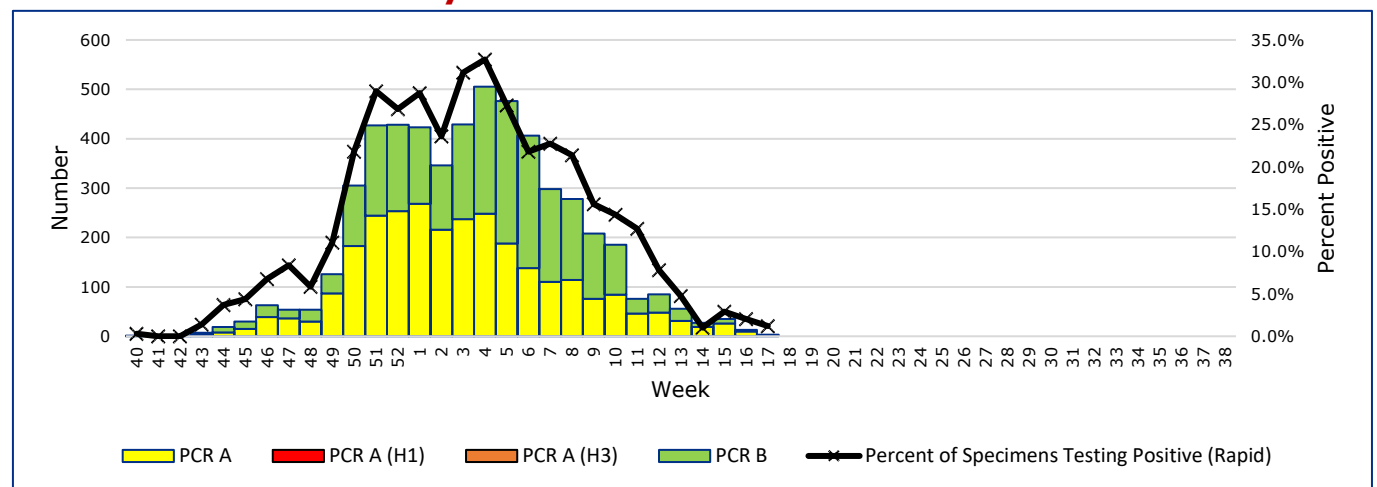
This chart documents the percentage of patient visits that were due to ILI at hospitals and clinics around the region, excluding confirmed COVID cases. It compares our region's data with the state's data and also compares to last flu season.

Positive Rapid Flu Tests by Week



This chart documents the number of rapid tests that have come back positive for flu A and flu B each week throughout the region.

Positive PCR Flu Tests by Week



This chart documents the number of PCR tests that have come back positive for flu A and flu B each week throughout the region.

Flu Data by County

County	Week 17				Week 16				Week 15			
	Patient Visits	% with ILI	Flu A	Flu B	Patient Visits	% with ILI	Flu A	Flu B	Patient Visits	% with ILI	Flu A	Flu B
Andrews	193	0%	0	0	191	0%	0	0	730	8%	2	1
Borden	3	0%	0	0	4	0%	0	0	1	0%	0	0
Brewster	85	0%	0	0	76	0%	0	0	102	0%	0	0
Coke	5	0%	0	0	3	0%	0	0	4	0%	0	0
Concho	20	0%	0	0	22	0%	0	0	18	0%	0	0
Crane	36	0%	0	0	34	0%	0	0	27	0%	0	0
Crockett	5	0%	0	0	8	0%	0	0	6	0%	0	0
Culberson	9	0%	0	0	11	0%	0	0	4	0%	0	0
Dawson	162	0%	0	0	149	0%	0	0	139	0%	0	0
Ector	2226	6%	3	1	2062	6%	0	4	5166	19%	11	6
El Paso	7160	0%	0	0	8132	1%	5	2	7671	1%	3	5
Gaines	129	0%	0	0	134	0%	0	0	156	0%	0	0
Glasscock	2	0%	0	0	6	0%	0	0	5	0%	0	0
Howard	356	0%	0	0	388	0%	0	0	335	0%	0	0
Hudspeth	16	0%	0	0	18	0%	0	0	20	0%	0	0
Irion	0		0	0	0		0	0	1	0%	0	0
Jeff Davis	15	0%	0	0	7	0%	0	0	6	0%	0	0
Kimble	9	0%	0	0	5	0%	0	0	129	5%	0	1
Loving	1	0%	0	0	0		0	0	0		0	0
McCulloch	12	0%	0	0	32	56%	0	1	37	59%	1	0
Martin	62	0%	0	0	53	0%	0	0	49	0%	0	0
Mason	39	0%	0	0	34	0%	0	0	29	0%	0	0
Menard	9	0%	0	0	11	0%	0	0	5	0%	0	0
Midland	2786	9%	2	2	2829	10%	5	1	2757	9%	5	1
Pecos	146	0%	0	0	142	0%	0	0	107	0%	0	0
Presidio	33	0%	0	0	43	0%	0	0	34	0%	0	0
Reagan	12	0%	0	0	19	0%	0	0	24	0%	0	0
Reeves	952	2%	1	0	968	3%	1	1	935	2%	1	2
Schleicher	4	0%	0	0	2	0%	0	0	1	0%	0	0
Sterling	0		0	0	0		0	0	1	0%	0	0
Sutton	13	0%	0	0	19	0%	0	0	16	0%	0	0
Terrell	11	0%	0	0	7	0%	0	0	4	0%	0	0
Tom Green	49	0%	0	0	71	0%	0	0	1436	2%	9	3
Upton	103	2%	0	0	115	8%	0	1	99	7%	1	0
Ward	158	0%	0	0	759	42%	0	0	133	0%	0	0
Winkler	93	0%	0	0	101	0%	0	0	107	0%	0	0
Total	14914	2.8%	6	3	16455	5.5%	11	10	20294	7.5%	33	19

Flu-Associated Pediatric Deaths & Outbreaks

One flu-associated pediatric death has been reported in PHR 9/10 this flu season. In PHR 9/10, no flu outbreaks have been reported for Week 17.

For a more comprehensive look at respiratory illnesses circulating throughout Texas, please visit: <https://www.dshs.texas.gov/texas-respiratory-virus-surveillance-report> and select the "Current Texas Respiratory Virus Surveillance Report"