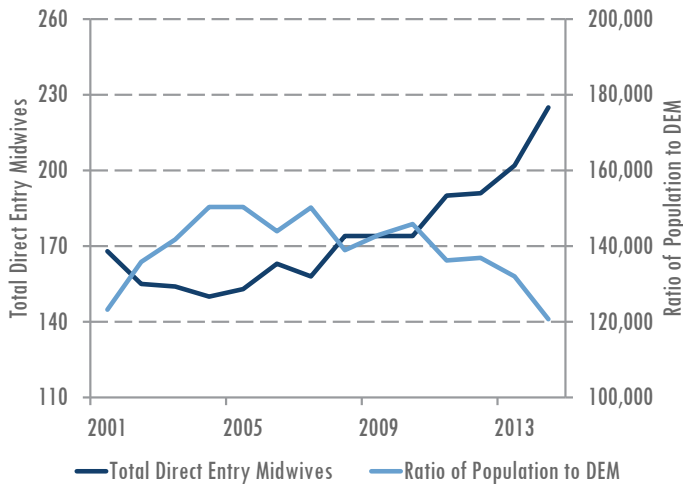




### DEM Growth Trends



In 2014, there were 225 actively licensed direct entry midwives (DEM) providing care in Texas.

- This number represented a 29.3% increase since 2009 and a 50.0% increase since 2004.

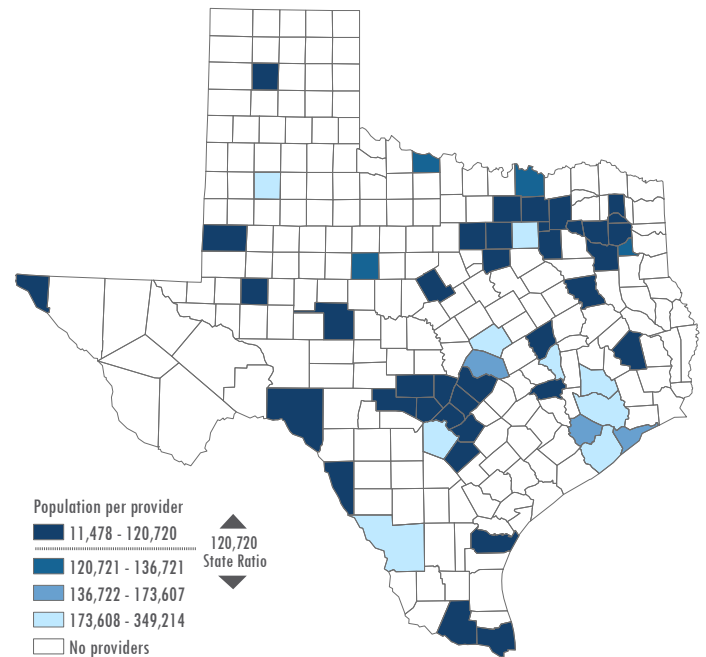
### Age Distribution of DEMs

Age Group	#DEMs	%DEMs
≤25	3	1.3%
26-30	19	8.5%
31-35	37	16.5%
36-40	34	15.2%
41-45	29	12.9%
46-50	19	8.5%
51-55	26	11.6%
56-60	27	12.1%
61-65	22	9.8%
>65	8	3.6%
<b>Total</b>	<b>224<sup>1</sup></b>	<b>100%</b>

- Within ten years, 25.4% of active 2014 DEMs will be at or approaching retirement age.
- Only 3.6% of DEMs were at retirement age in 2014.
- In 2014, 54.1% of the actively licensed DEM workforce was 45 years of age or younger.

<sup>1</sup> Age data were available for 224 of 225 direct entry midwives.

### Ratio of Texas Population to DEM, by County



### Geographic Distribution of DEMs

DEMs were not evenly distributed throughout the state.

- There was a 58.5% difference between the number of DEMs in metropolitan and non-metropolitan areas even after controlling for population differences.
- Between border and non-border areas the percent difference was 51.6%.

Geographic Designation	Ratio of population to DEM
Metropolitan	114,416
Non-metropolitan	208,977
Border	76,373
Non-border	129,448
<b>Texas</b>	<b>120,720</b>

