



Texas Influenza Summer Surveillance Report
2010-2011 Season/2011 MMWR Week 39
 (September 25, 2011 – October 01, 2011)
 Report produced on 10/07/2011

The final report for the official 2010-2011 influenza season is located at
<http://www.dshs.state.tx.us/IDCU/disease/influenza/surveillance/2011/2010-2011-DSHS-Flu-Report-Week-20.doc>.

During week 39 in Texas:

- No specimens tested by NREVSS laboratories in Texas were positive for influenza.
- The percentage of visits for influenza-like illness (ILI) as reported by ILINet providers in Texas was below the state and HHS regional baselines.
- No influenza-associated pediatric deaths were reported.
- No influenza or ILI outbreaks were reported.
- All Health Service Regions (HSRs) reported. HSR 2/3 reported an increased level of flu activity compared to week 38. For a map of Health Service Regions please visit the following website: <http://www.dshs.state.tx.us/regions/state.shtm>

Laboratory Results

The National Respiratory and Enteric Virus Surveillance System (NREVSS) collects information on a variety of respiratory viruses including influenza, parainfluenza, respiratory syncytial virus (RSV), rhinovirus, human metapneumovirus (HMPV), and respiratory adenovirus. The results from week 39 are summarized below.

Virus	Number of Laboratories Testing	Tests Performed	Positive Tests	Percentage of Tests Positive
Influenza	9	554	0	0%
Adenovirus (respiratory)	5	392	8	2.04%
HMPV	5	279	3	1.08%
Parainfluenza	5	392	16	4.08%
Rhinovirus	4	250	80	32%
RSV	16	576	1	0.17%

U.S. Outpatient Influenza-like Illness Surveillance Network

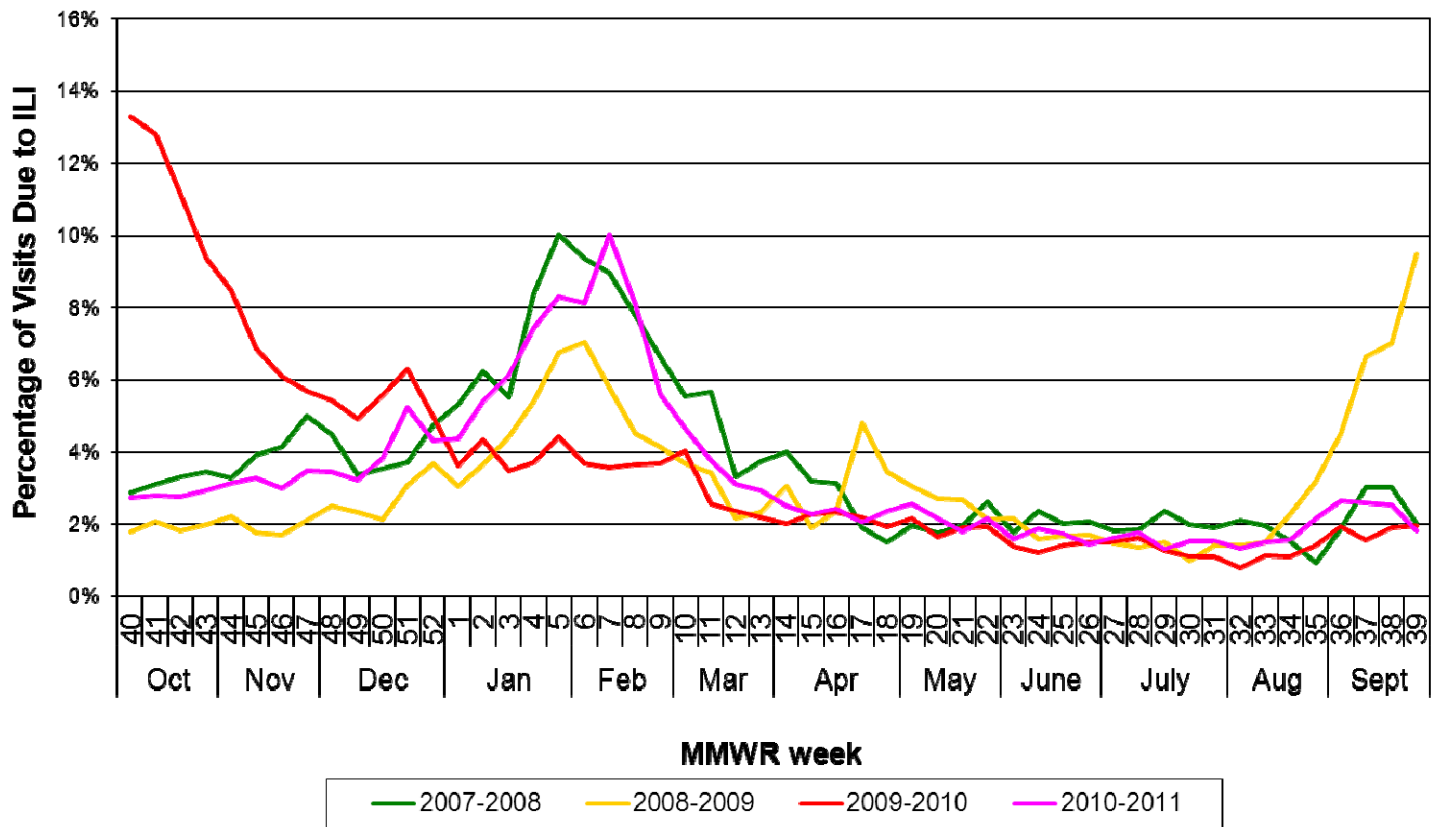
Thirty providers in Texas reported data to the U.S. Outpatient Influenza-like Illness Surveillance Network (ILINet) (formerly known as the U.S. Influenza Sentinel Provider Surveillance System) on patients with influenza-like illness (ILI) and total patients seen for any reason during week 39. Of the 30 providers who saw patients, 17 (57%) saw at least one patient with ILI. Of all patient visits during this week, 1.83% were due to ILI.

**Percentage of Visits for Influenza-like Illness reported by the
US Outpatient Influenza-like Illness Surveillance Network (ILINet) in Texas
(10/06/2011 09:45 AM)**

Week	# Reporting	Age 0-4	Age 5-24	Age 25-49	Age 50-64	Age 65 and older	Total ILI	Total Patients	% ILI
201040	97	375	375	209	55	27	1041	37881	2.75%
201041	96	400	389	193	53	19	1054	37677	2.80%
201042	97	374	443	202	36	22	1077	38758	2.78%
201043	95	395	429	189	59	37	1109	37514	2.96%
201044	98	398	525	191	66	29	1209	38431	3.15%
201045	96	437	553	189	67	35	1281	38838	3.30%
201046	94	372	471	181	46	35	1105	36696	3.01%
201047	89	429	309	153	36	27	954	27258	3.50%
201048	92	504	438	199	75	34	1250	36252	3.45%
201049	92	306	540	219	43	24	1132	35119	3.22%
201050	87	395	605	218	67	27	1312	34133	3.84%
201051	80	408	555	293	85	42	1383	26344	5.25%
201052	80	398	372	341	89	51	1251	28940	4.32%
201101	89	499	523	309	80	55	1466	33532	4.37%
201102	88	576	772	366	99	57	1870	34602	5.40%
201103	91	680	1032	491	145	54	2402	39161	6.13%
201104	96	827	1441	678	162	64	3172	42635	7.44%
201105	94	613	1335	658	148	63	2817	33849	8.32%
201106	91	676	1469	884	196	55	3280	40351	8.13%
201107	87	738	2007	1138	328	84	4295	42872	10.02%
201108	89	777	1462	736	178	57	3210	39561	8.11%
201109	86	575	879	454	127	107	2142	38255	5.60%
201110	81	452	741	329	82	19	1623	34850	4.66%
201111	84	348	423	301	77	24	1173	31144	3.77%
201112	82	336	413	248	57	28	1082	34763	3.11%
201113	79	330	367	200	37	12	946	32028	2.95%
201114	79	273	344	137	52	15	821	32528	2.52%
201115	82	228	301	167	50	14	760	33124	2.29%
201116	69	222	250	158	32	16	678	27949	2.43%
201117	69	220	211	132	27	12	602	29116	2.07%
201118	60	188	250	170	34	15	657	27656	2.38%
201119	67	202	273	187	47	17	726	28293	2.57%
201120	62	179	222	139	23	11	574	26508	2.17%
201121	54	123	182	117	26	10	458	25537	1.79%
201122	53	112	177	159	25	14	487	22503	2.16%
201123	49	102	138	113	28	8	389	24204	1.61%
201124	49	123	129	110	54	15	431	22728	1.90%
201125	47	93	129	104	30	20	376	21432	1.75%
201126	46	92	105	89	29	8	323	22183	1.46%
201127	45	93	110	101	21	6	331	20267	1.63%

201128	44	106	130	120	19	6	381	21605	1.76%
201129	43	71	94	77	10	8	260	19669	1.32%
201130	41	92	104	80	13	7	296	19325	1.53%
201131	42	102	106	81	21	6	316	20357	1.55%
201132	40	72	110	91	16	10	299	22479	1.33%
201133	42	90	143	109	21	8	371	24361	1.52%
201134	42	78	157	106	23	22	386	24818	1.56%
201135	43	130	226	135	38	18	547	25096	2.18%
201136	40	124	222	142	49	15	552	20783	2.66%
201137	40	107	243	176	39	19	584	22469	2.60%
201138	38	116	225	172	31	12	556	21781	2.55%
201139	30	48	151	117	29	12	357	19515	1.83%

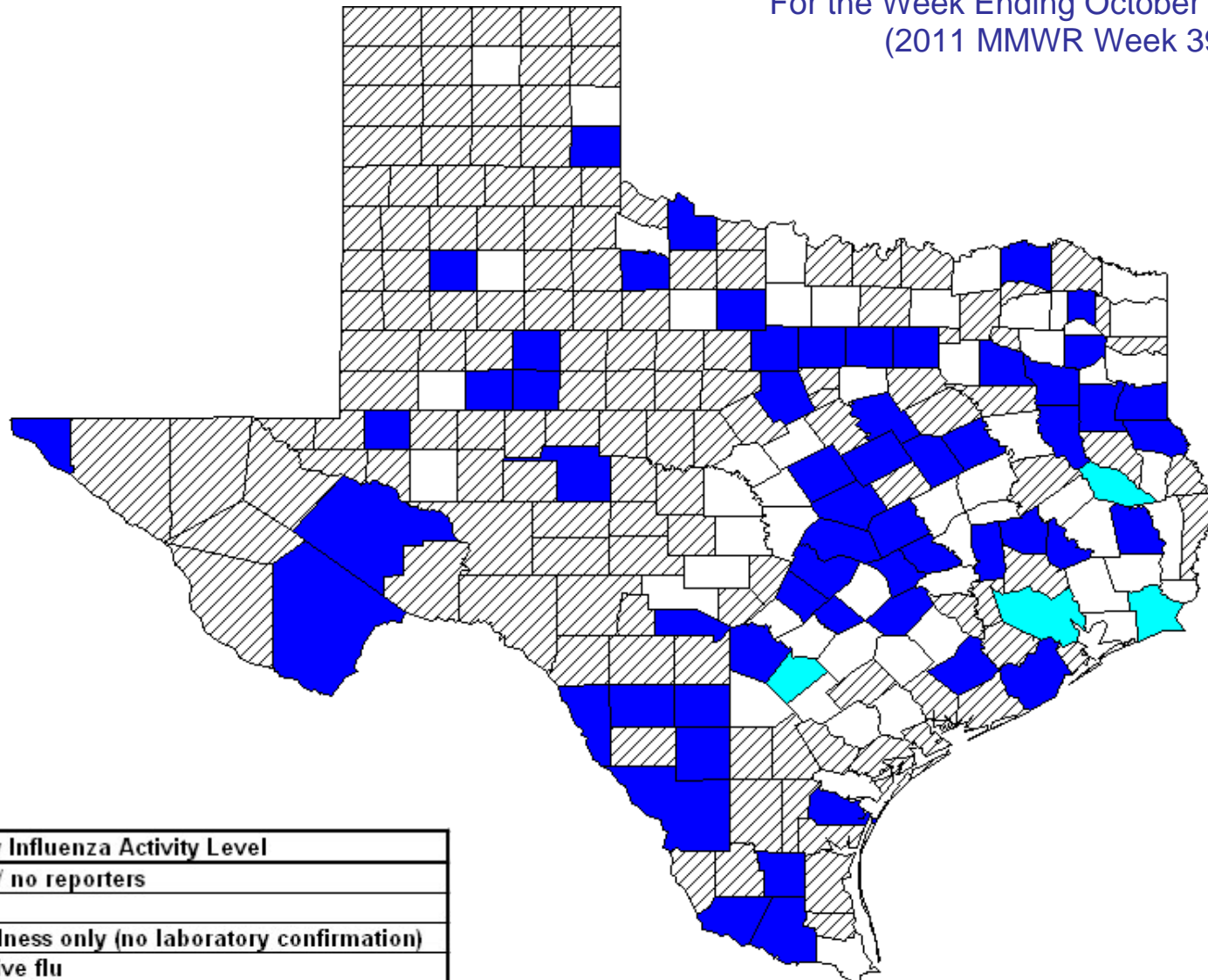
**Percentage of Visits Due to Influenza-Like Illness
Reported by Texas Participants in ILINet, 2007-2011 Seasons**


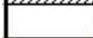







National Influenza Report

The final U.S. influenza weekly report (FluView) for the 2010-2011 influenza season may be found at <http://www.cdc.gov/flu/weekly/weeklyarchives2010-2011/weekly20.htm>. National influenza reporting will resume on October 2, 2011. Brief summer surveillance reports are available at <http://www.cdc.gov/flu/weekly/>.

Statewide Influenza Activity^{1,2}
 (All Influenza Types and Subtypes)
 For the Week Ending October 01, 2011³
 (2011 MMWR Week 39)



County Influenza Activity Level	
	No information / no reporters
	No activity
	Influenza-like illness only (no laboratory confirmation)
	Rapid test positive flu
	Flu A (confirmed by culture or PCR)
	Flu B (confirmed by culture or PCR)
	Flu A and B (confirmed by culture or PCR)

¹Influenza activity level corresponds to current MMWR week only and does not reflect previous weeks' activity.

²The majority of influenza cases are not reportable by law to the Texas Department of State Health Services. This map contains data from sentinel reporters and NREVSS laboratories and does not represent all influenza cases in the state.

³Positive laboratory results are reported according to specimen collection date or date received in the lab if the former is unknown.