

Loading Citrix Client for PHLIMS Access

Launch Internet Explorer and type in the following URL into the Address Bar:

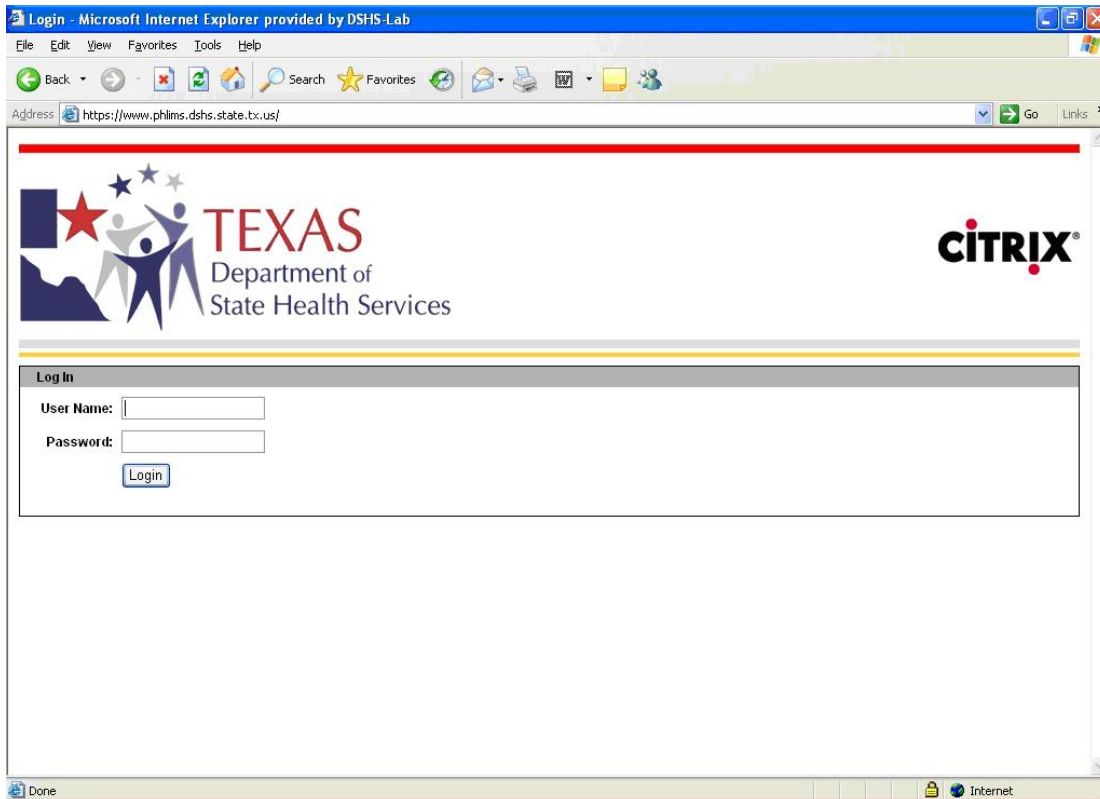
<https://phlms.dshs.state.tx.us>

You may receive a Security Alert message.



Select "OK" to continue.

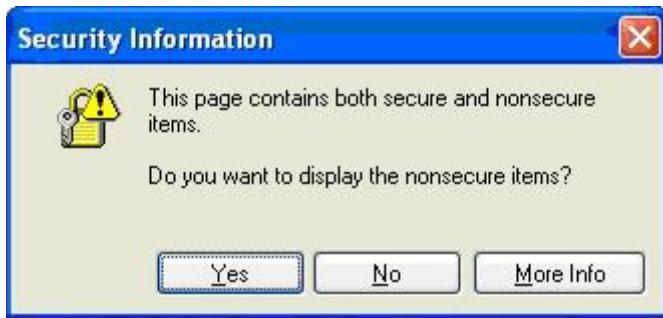
You will get to a Texas Department of State Health Services Citrix Login Screen.



Type in your user name and password and select "Login".

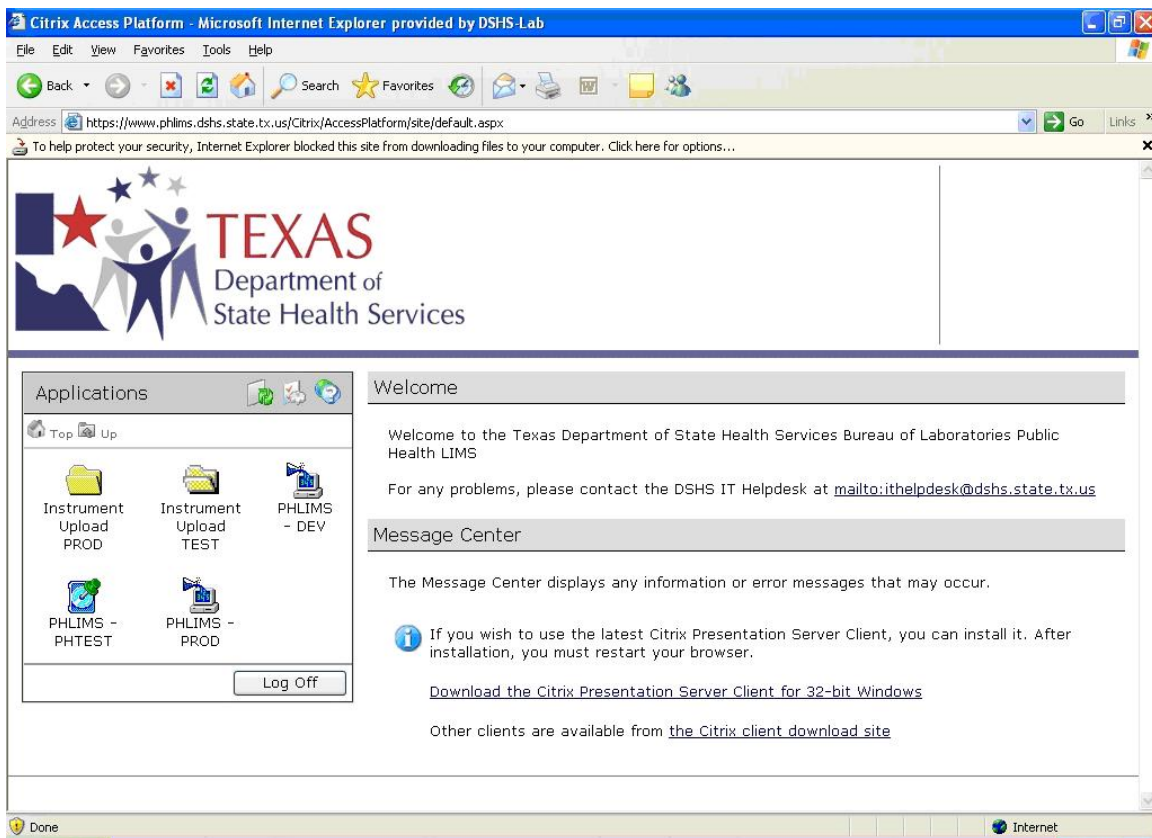
Remote LabWare Access – CITRIX Setup

You may receive a Security Alert message again.



Click “Yes” to display the non-secure items.

You will proceed to the Texas Department of State Health Services Applications screen. (You may not see all of icons shown in the image below.)



Select the link “Download the Citrix Presentation Server Client for 32-bit Windows” under the Message Center.

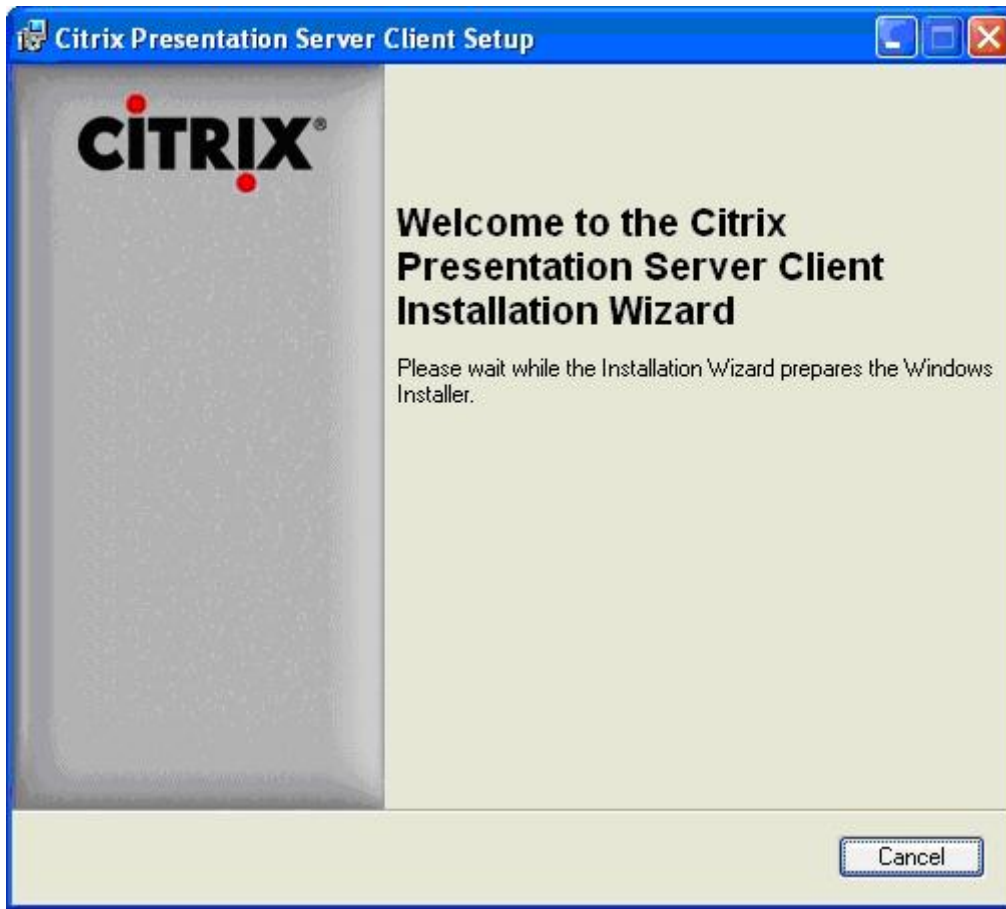


Select "Run" to load the file.

You will receive a Security Warning.



Select "Run" to run the software. The Citrix Presentation Server Client Installation Wizard will begin the installation.

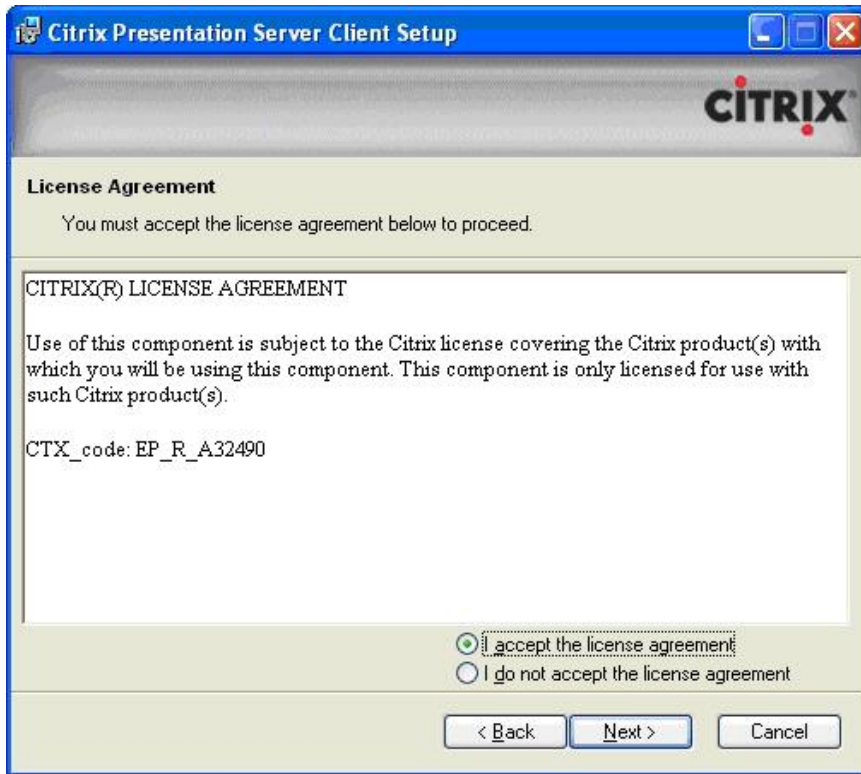


Follow the instructions from the Wizard.

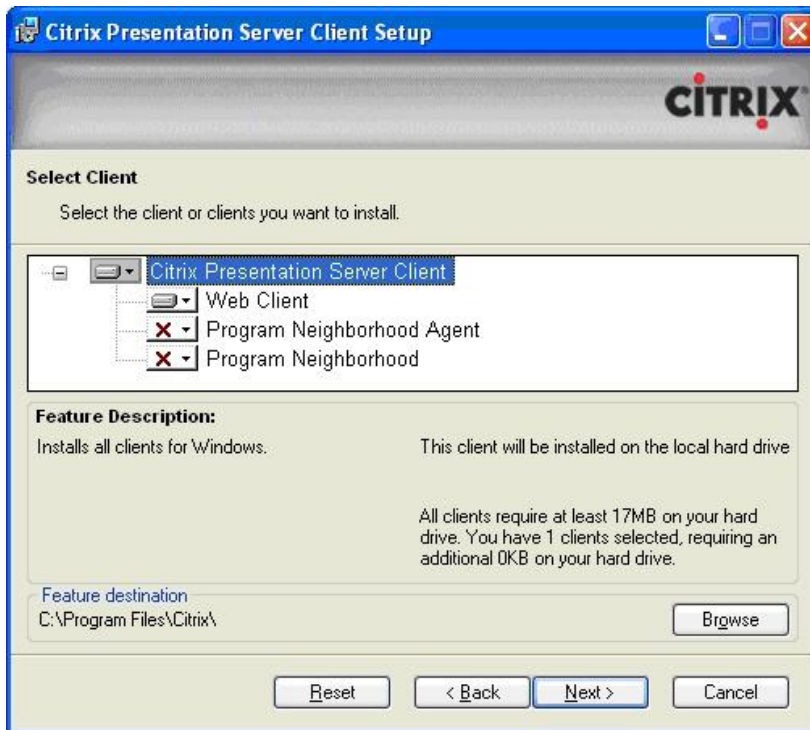


Select "Next".

Remote LabWare Access – CITRIX Setup

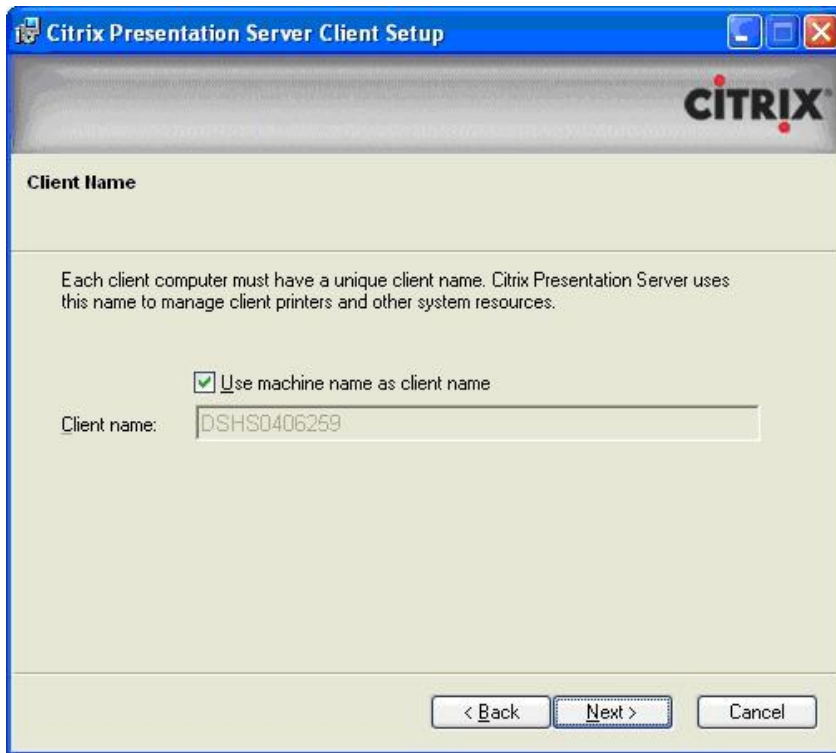


Select “I accept the license agreement”, then select “Next”.



Accept the default to install “Web Client” only by selecting “Next”.

Remote LabWare Access – CITRIX Setup

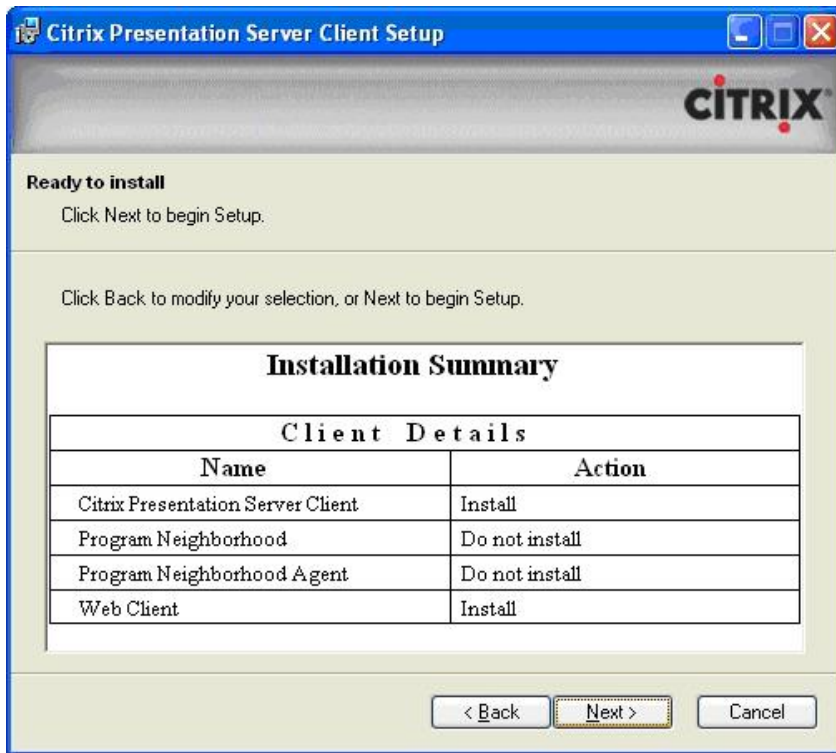


Select "Next". (Ensure "Use machine name as client name" is checked.)

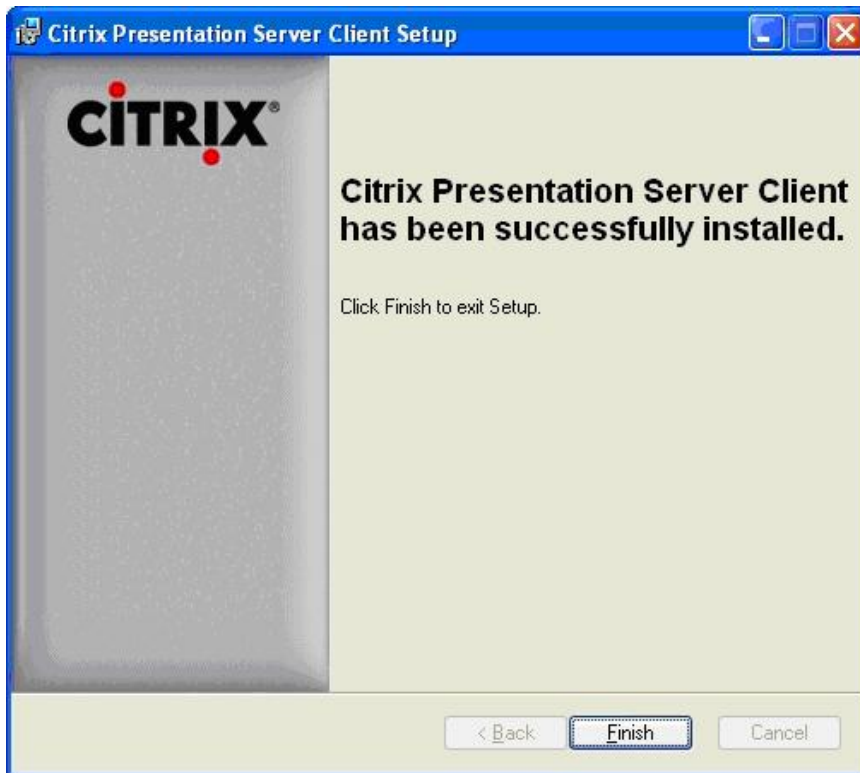


Select "Next". (Ensure "No" is checked.)

Remote LabWare Access – CITRIX Setup

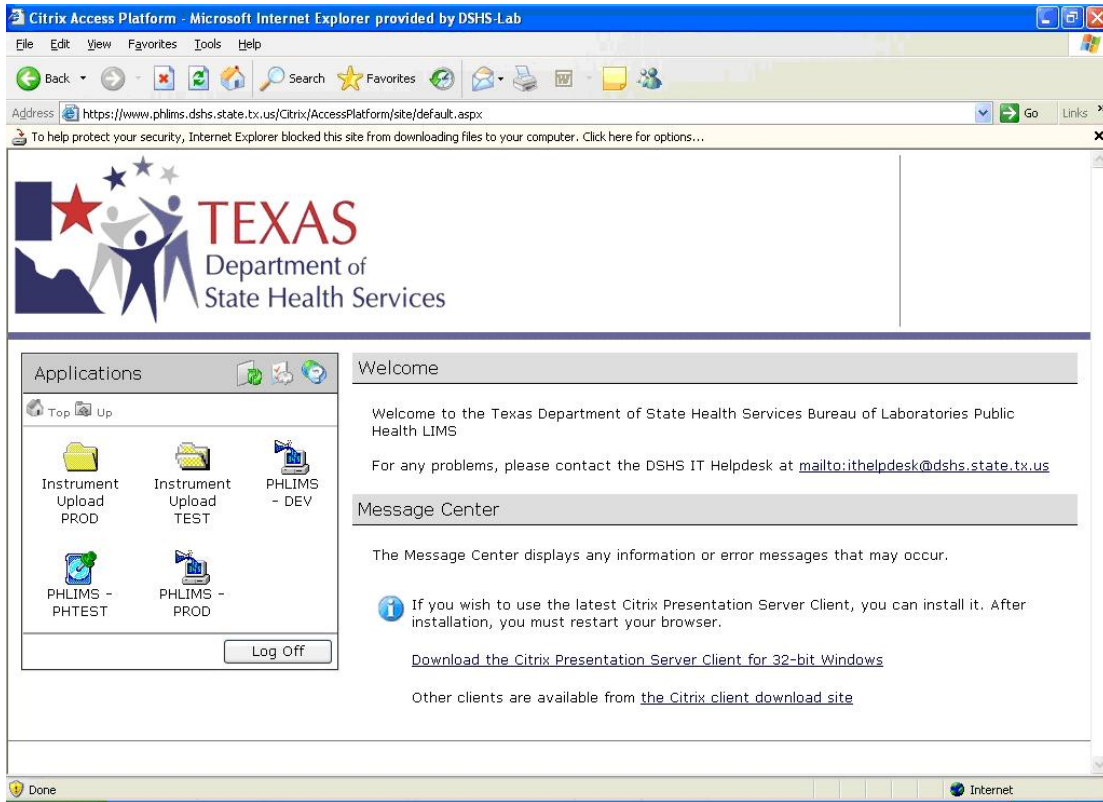


Select “Next”, to install the clients shown above.

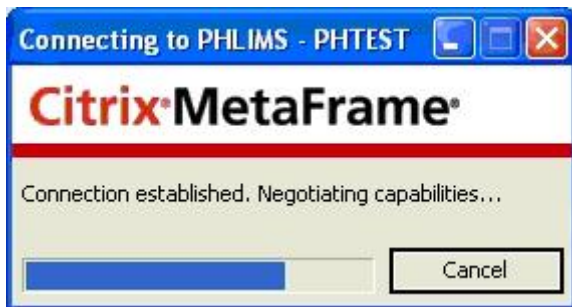


Select “Finish”, to complete the install.
You will go back to the login screen to begin using the application.

Remote LabWare Access – CITRIX Setup



When you launch an application from this screen, you will see a few Citrix MetaFrame windows appear:



Let these windows load. If you selected one of the application shortcuts, a LabWare screen will display.

Remote LabWare Access – CITRIX Setup



This will be followed by the LabWare toolbar. Select the Login icon (second from left). Enter your username and password to access the application.



For further instructions on how to use the LabWare application, refer to the document titled “Accessing Submitter Reports in LabWare”.