

Weekly Flu Surveillance Report

Public Health Region 9/10

Week 01- January 3- January 9



TEXAS
Health and Human
Services

Texas Department of State
Health Services

Disclaimer

Most cases of influenza are not reportable in the state of Texas, thus the data in this report was collected from hospitals, clinics, and schools throughout the region who have agreed to voluntarily submit data.

Definitions

ILI: Influenza-Like Illness. This is an illness that resembles the flu, but has not been confirmed. **Rapid:** These tests are typically done in-house to quickly test for influenza. **PCR:** These tests are generally more precise than rapid tests and are performed at the DSHS state lab and many commercial labs to confirm a case of influenza.

Geographic Spread of Influenza in the Region

No Activity	Sporadic	Local	Regional	Widespread
-------------	----------	-------	----------	------------

Geographic spread is determined using the CDC's guidelines for flu activity: <http://www.cdc.gov/flu/weekly/overview.htm>.

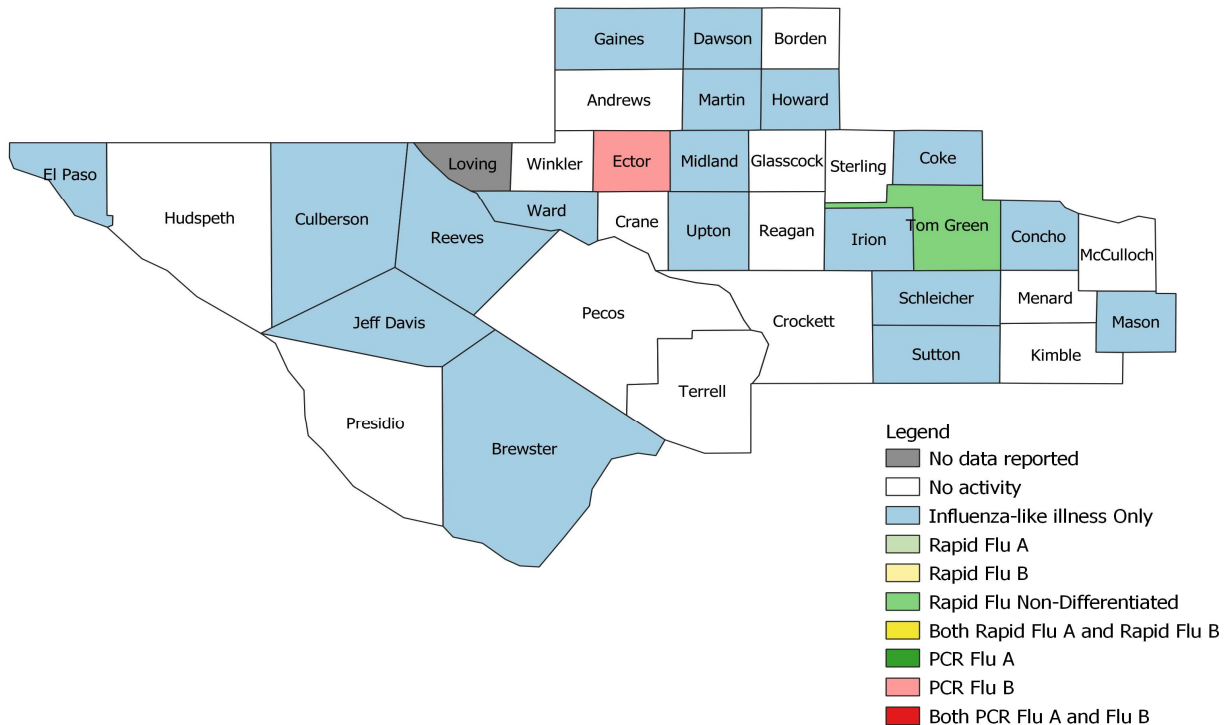
Summary Data

Condition	Week 01	Week 53	Week 52
Number of Counties Reporting (36 total)	↑ 35	34	35
Number of Counties Reporting ILI	↑ 19	16	21
Number of Counties Reporting High Levels of ILI*	↓ 5	6	7
Number of Counties Reporting Flu A	↓ 1	4	2
Number of Counties Reporting Flu B	↓ 2	3	6
Number of Counties Reporting Flu A & Flu B	↓ 1	2	2

The arrows represent changes from the previous week. A sideways arrow means there was no change in that condition.

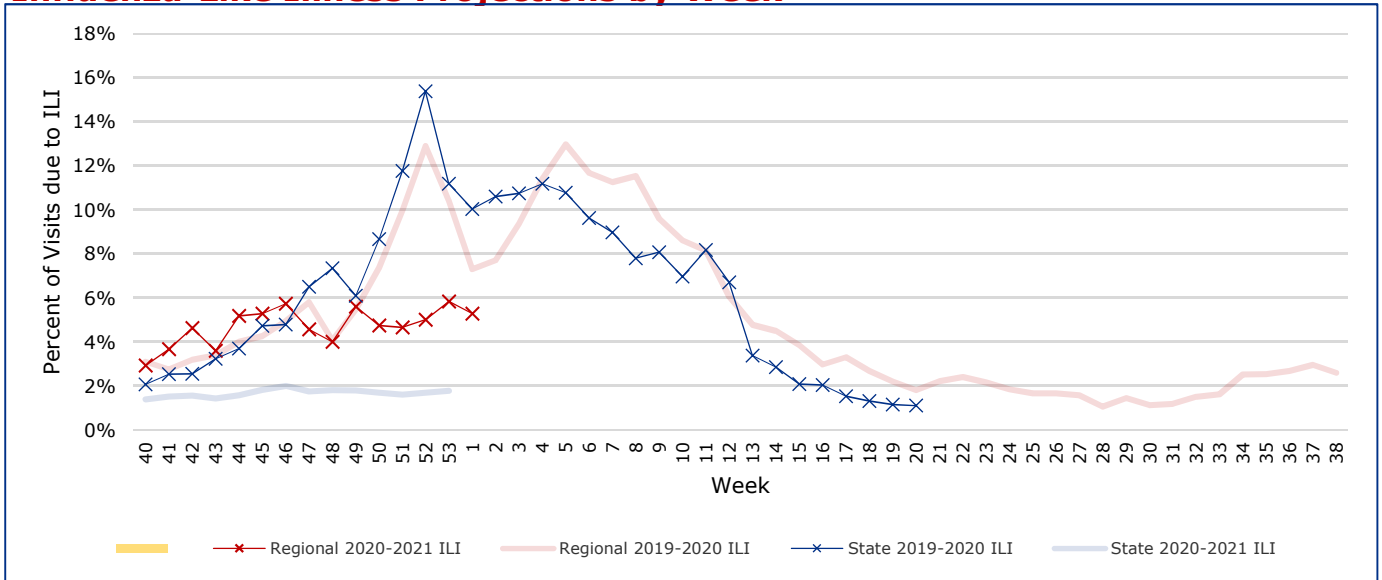
*Counties with total percent of visits due to ILI above 4.0% for the week are considered to have high/abnormal levels.

Map of Regional Flu Activity



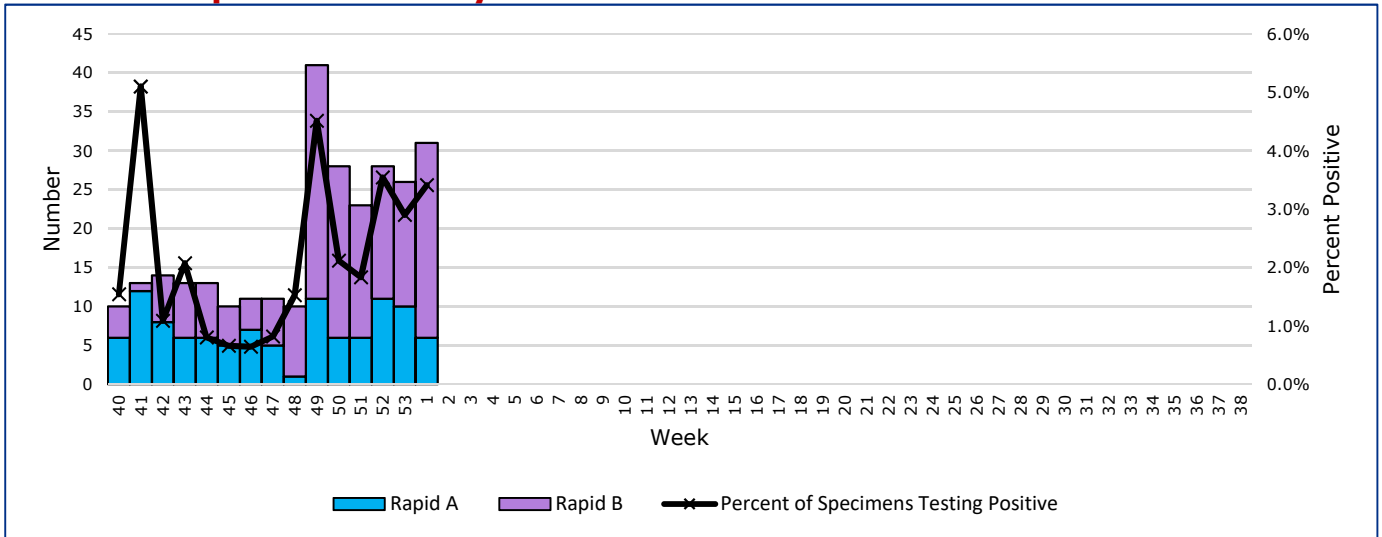
The map above depicts the previous week's reports of flu or influenza-like illness activity in each county. The legend on the bottom right of the map describes the meaning of each color.

Influenza-Like Illness Projections by Week



This chart documents the percentage of patient visits that were due to ILI at hospitals and clinics around the region. It compares our region's data with the state's data and also compares to last flu season. Only confirmed COVID-19 cases in PHR 9/10 are included on this graph.

Positive Rapid Flu Tests by Week



This chart documents the number of rapid tests that have come back positive for flu A and flu B each week throughout the region.

Flu Data by County

County	Week 01				Week 53				Week 52			
	Patient Visits	% with ILI	Flu A	Flu B	Patient Visits	% with ILI	Flu A	Flu B	Patient Visits	% with ILI	Flu A	Flu B
Andrews	24	0%	0	0	317	0%	0	0	298	3%	0	0
Borden	5	0%	0	0	0		0	0	2	0%	0	0
Brewster	67	3%	0	0	80	5%	0	0	63	0%	0	0
Coke	54	4%	0	0	58	3%	0	0	52	2%	0	0
Concho	46	2%	0	0	47	6%	0	0	36	6%	0	0
Crane	23	0%	0	0	130	1%	0	0	128	2%	0	0
Crockett	29	0%	0	0	32	6%	0	0	13	0%	0	0
Culberson	9	11%	0	0	42	45%	0	1	39	41%	0	2
Dawson	140	1%	0	0	127	0%	0	0	142	0%	0	0
Ector	4340	11%	6	23	2797	14%	7	14	3079	10%	4	9
El Paso	5189	1%	0	0	5256	1%	0	0	4343	1%	0	0
Gaines	103	1%	0	0	87	2%	0	0	103	1%	0	0
Glasscock	4	0%	0	0	4	0%	0	0	4	75%	0	0
Howard	275	1%	0	0	271	1%	0	0	282	2%	0	0
Hudspeth	14	0%	0	0	13	0%	0	0	17	6%	0	0
Irion	16	6%	0	0	18	0%	0	0	20	10%	0	0
Jeff Davis	13	8%	0	0	11	0%	0	0	7	0%	0	0
Kimble	168	0%	0	0	198	0%	0	0	140	0%	0	1
Loving	0		0	0	0		0	0	0		0	0
McCulloch	90	0%	0	0	96	0%	0	0	104	2%	0	0
Martin	46	4%	0	0	251	22%	0	0	35	6%	0	0
Mason	38	3%	0	0	35	6%	0	0	36	0%	0	0
Menard	19	0%	0	0	24	4%	0	0	15	7%	0	0
Midland	2123	12%	0	0	2071	12%	0	0	1813	9%	0	1
Pecos	746	0%	0	0	485	2%	1	0	113	0%	0	0
Presidio	37	0%	0	0	30	0%	0	0	27	0%	0	0
Reagan	29	0%	0	0	30	0%	0	0	33	3%	0	0
Reeves	27	4%	0	0	491	1%	1	0	259	6%	0	1
Schleicher	14	7%	0	0	24	0%	0	0	20	0%	0	0
Sterling	18	0%	0	0	13	8%	0	0	11	9%	0	0
Sutton	53	4%	0	0	42	0%	0	0	30	3%	0	0
Terrell	8	0%	0	0	1	0%	0	0	7	0%	0	0
Tom Green	4028	3%	0	2	3536	3%	1	1	3080	3%	7	3
Upton	76	13%	0	0	69	4%	0	0	54	7%	0	0
Ward	87	1%	0	0	316	14%	0	0	176	9%	0	0
Winkler	26	0%	0	0	123	2%	0	0	125	4%	0	0
Total	17984	68301.4%	6	25	17125	5.7%	10	16	14706	4.9%	11	17

Flu-Associated Pediatric Deaths & Outbreaks

No flu-associated pediatric deaths have been reported in PHR 9/10 this flu season. No new flu outbreaks were reported for Week 01.