

Weekly Flu Surveillance Report
Public Health Region 9/10
Week 8: February 16-February 22



Texas Department of State Health Services

Disclaimer

Most cases of influenza are not reportable in the state of Texas, thus the data in this report was collected from hospitals, clinics, and schools throughout the region who have agreed to voluntarily submit data.

Definitions

ILI: Influenza-Like Illness. This is an illness that resembles the flu, but has not been confirmed. **Rapid:** These tests are typically done in-house to quickly test for influenza. **PCR:** These tests are generally more precise than rapid tests and are performed at the DSHS state lab and many commercial labs to confirm a case of influenza.

Geographic Spread of Influenza in the Region

No Activity	Sporadic	Local	Regional	Widespread
-------------	----------	-------	----------	------------

Geographic spread is determined using the CDC's guidelines for flu activity: <http://www.cdc.gov/flu/weekly/overview.htm>.

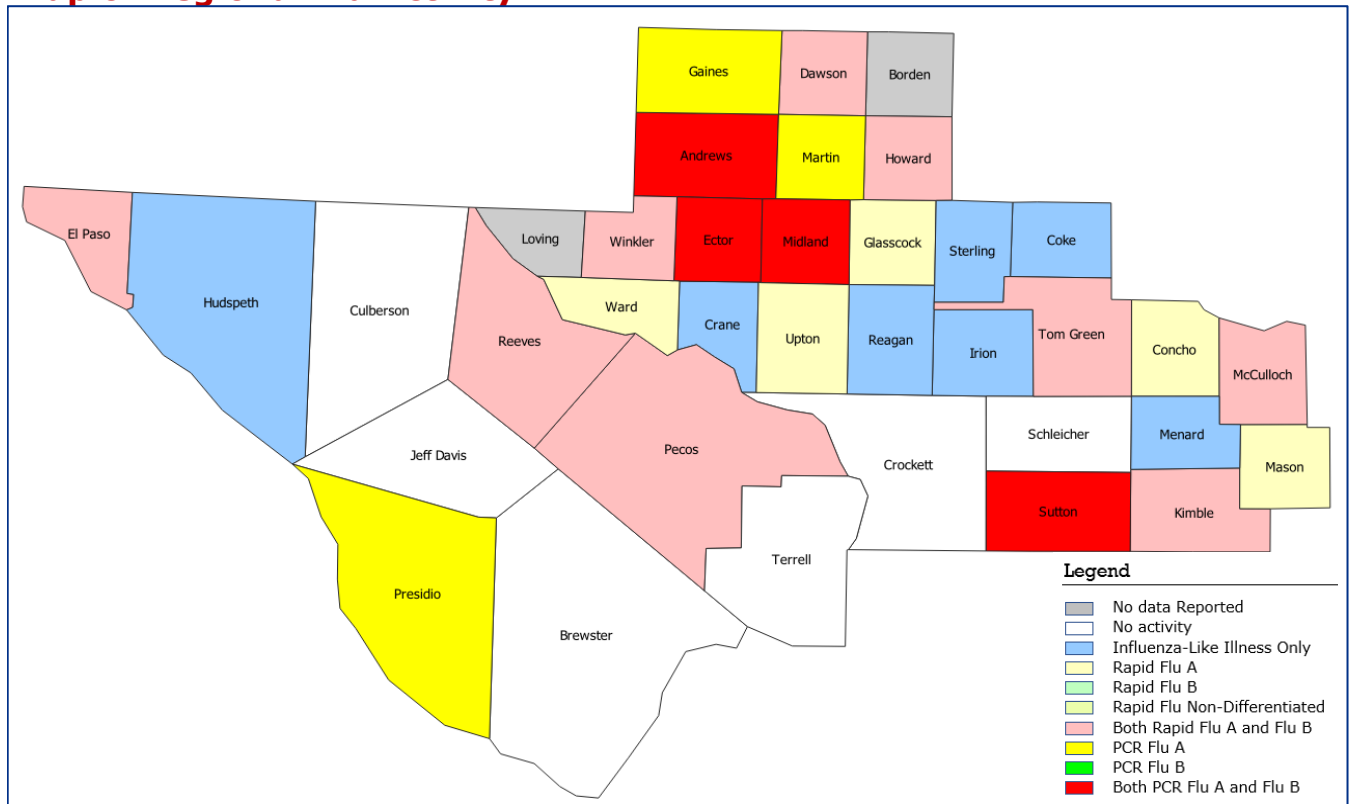
Summary Data

Condition	Week 08	Week 07	Week 06
Number of Counties Reporting (36 total)	↓ 34	35	35
Number of Counties Reporting ILI	↓ 27	28	26
Number of Counties Reporting High Levels of ILI*	↓ 22	23	20
Number of Counties Reporting Flu A	↑ 20	17	14
Number of Counties Reporting Flu B	↓ 13	17	14
Number of Counties Reporting Flu A & Flu B	↓ 13	17	13

The arrows represent changes from the previous week. A sideways arrow means there was no change in that condition.

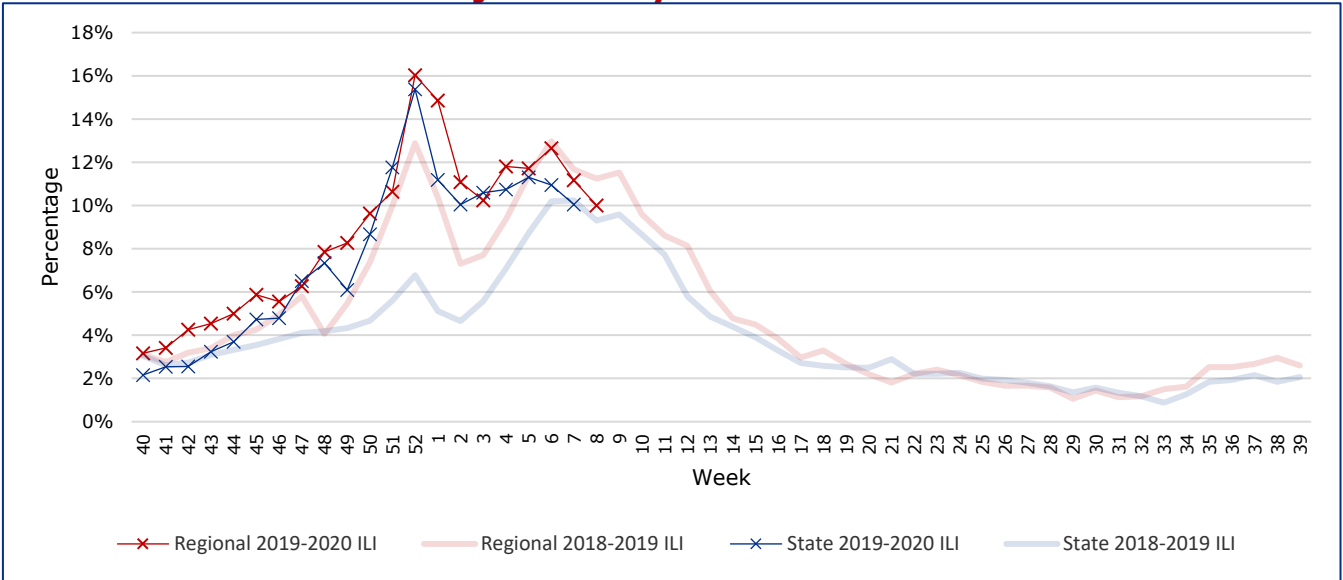
*Counties with total percent of visits due to ILI above 4.0% for the week are considered to have high/abnormal levels.

Map of Regional Flu Activity



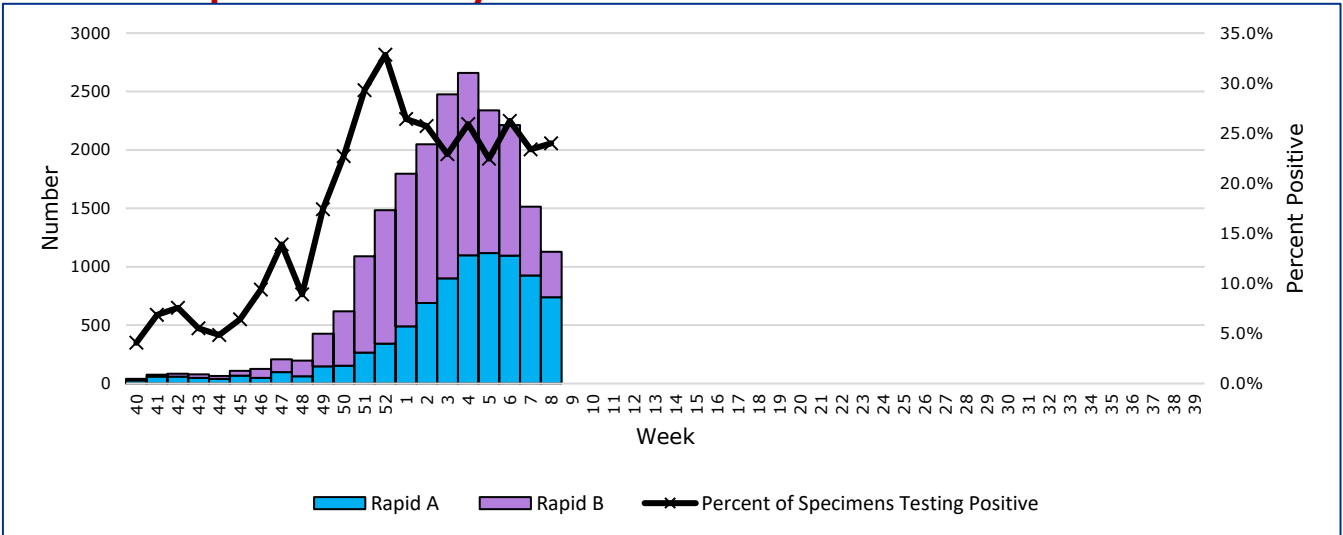
The map above depicts the previous week's reports of flu or influenza-like illness activity in each county. The legend on the bottom right of the map describes the meaning of each color.

Influenza-Like Illness Projections by Week



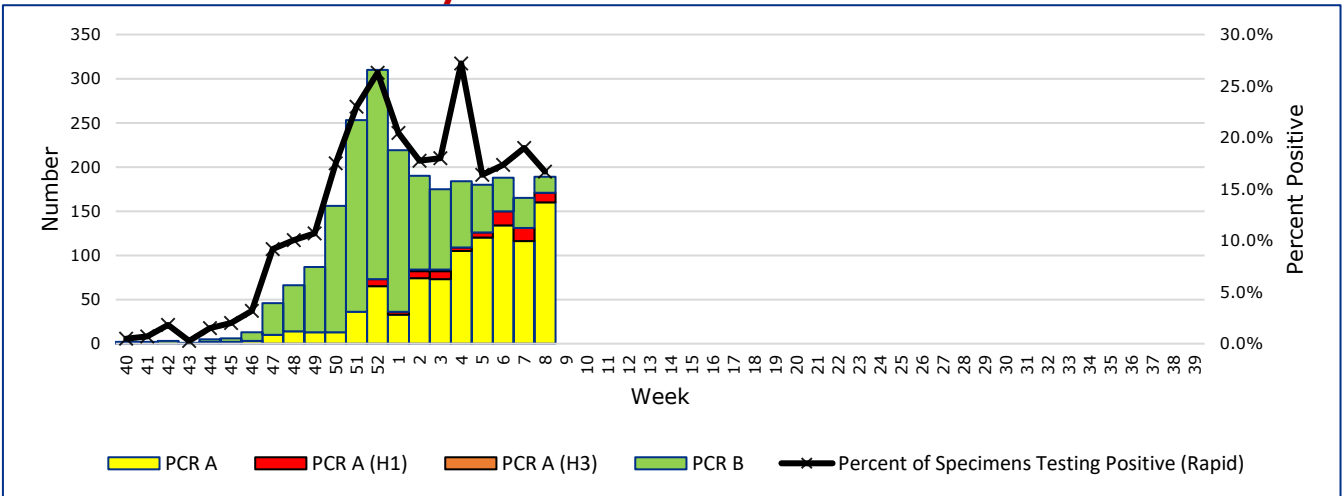
This chart documents the percentage of patient visits that were due to ILI at hospitals and clinics around the region. It compares our region's data with the state's data and also compares to last flu season.

Positive Rapid Flu Tests by Week



This chart documents the number of rapid tests that have come back positive for flu A and flu B each week throughout the region.

Positive PCR Flu Tests by Week



This chart documents the number of PCR tests that have come back positive for flu A and flu B each week throughout the region.

Flu Data by County

County	Week 08				Week 07				Week 06			
	Patient Visits	% with ILI	Flu A	Flu B	Patient Visits	% with ILI	Flu A	Flu B	Patient Visits	% with ILI	Flu A	Flu B
Andrews	448	0%	21	6	520	0%	18	14	437	0%	17	11
Borden	0		0	0	1	0%	0	0	6	0%	0	0
Brewster	14	0%	0	0	9	0%	0	0	8	0%	0	0
Coke	50	8%	0	0	42	7%	0	0	53	11%	0	0
Concho	81	17%	3	0	37	3%	0	0	65	12%	0	0
Crane	16	6%	0	0	10	30%	0	0	15	0%	0	0
Crockett	16	0%	0	0	21	5%	0	0	16	6%	0	0
Culberson	6	0%	0	0	5	20%	0	0	9	0%	0	0
Dawson	181	1%	7	2	123	2%	6	1	143	1%	6	0
Ector	5881	15%	192	48	5750	14%	135	30	5483	13%	145	50
El Paso	7900	5%	403	310	6022	7%	626	512	5687	8%	808	987
Gaines	136	8%	7	0	27	0%	1	0	25	4%	1	0
Glasscock	57	7%	1	0	53	6%	0	0	4	0%	0	0
Howard	745	9%	27	1	798	11%	32	3	351	7%	5	1
Hudspeth	13	15%	0	0	10	30%	0	0	10	0%	0	0
Irion	29	17%	0	0	116	9%	2	3	29	7%	0	0
Jeff Davis	2	0%	0	0	1	0%	0	0	1	0%	0	0
Kimble	226	0%	7	2	240	0%	4	3	244	0%	0	2
Loving	0		0	0	0		0	0	0		0	0
McCulloch	750	10%	20	3	657	8%	8	3	604	12%	11	9
Martin	519	14%	9	0	496	14%	11	1	379	16%	6	3
Mason	37	3%	1	0	32	0%	4	1	32	3%	0	0
Menard	19	11%	0	0	22	5%	0	0	17	6%	0	0
Midland	1574	23%	100	5	1561	18%	84	13	1494	23%	104	22
Pecos	942	0%	15	14	171	4%	0	0	850	1%	26	22
Presidio	179	5%	1	0	19	21%	0	0	93	1%	0	0
Reagan	24	8%	0	0	37	5%	0	0	20	10%	0	0
Reeves	761	3%	20	4	771	3%	17	11	803	4%	16	19
Schleicher	26	0%	0	0	18	6%	0	0	20	20%	0	0
Sterling	16	6%	0	0	26	27%	0	0	32	6%	0	0
Sutton	120	8%	2	1	165	14%	3	4	146	14%	2	1
Terrell	15	0%	0	0	3	0%	0	0	29	3%	0	0
Tom Green	4509	11%	66	9	4347	12%	66	10	3899	8%	64	10
Upton	245	13%	1	0	252	24%	8	5	258	20%	4	4
Ward	240	16%	2	0	803	18%	17	9	785	20%	14	17
Winkler	319	8%	6	1	331	14%	9	7	322	16%	15	7
Total	26096	9.8%	911	406	23496	10.9%	1051	630	22369	12.4%	1244	1165

Flu-Associated Pediatric Deaths & Outbreaks

No flu-associated pediatric deaths have been reported in PHR 9/10 this flu season. No new outbreaks were reported during Week 08.