

Weekly Flu Surveillance Report

Public Health Region 9/10

Week 9: February 23-February 29



Texas Department of State Health Services

Disclaimer

Most cases of influenza are not reportable in the state of Texas, thus the data in this report was collected from hospitals, clinics, and schools throughout the region who have agreed to voluntarily submit data.

Definitions

ILI: Influenza-Like Illness. This is an illness that resembles the flu, but has not been confirmed. **Rapid:** These tests are typically done in-house to quickly test for influenza. **PCR:** These tests are generally more precise than rapid tests and are performed at the DSHS state lab and many commercial labs to confirm a case of influenza.

Geographic Spread of Influenza in the Region

No Activity	Sporadic	Local	Regional	Widespread
-------------	----------	-------	----------	------------

Geographic spread is determined using the CDC's guidelines for flu activity: <http://www.cdc.gov/flu/weekly/overview.htm>.

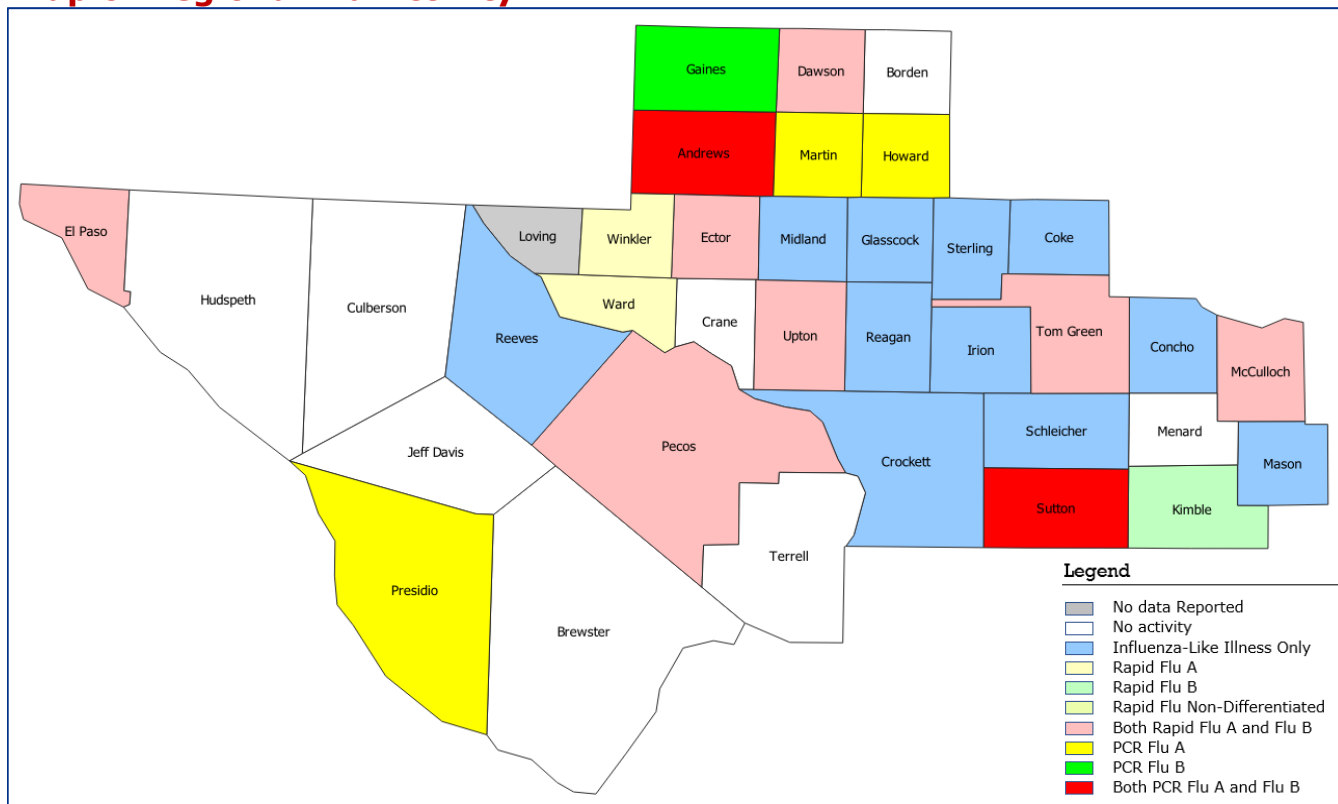
Summary Data

Condition	Week 09	Week 08	Week 07
Number of Counties Reporting (36 total)	↑ 35	34	35
Number of Counties Reporting ILI	↓ 25	27	28
Number of Counties Reporting High Levels of ILI*	↓ 21	22	23
Number of Counties Reporting Flu A	↓ 13	20	17
Number of Counties Reporting Flu B	↓ 11	13	17
Number of Counties Reporting Flu A & Flu B	↓ 9	13	17

The arrows represent changes from the previous week. A sideways arrow means there was no change in that condition.

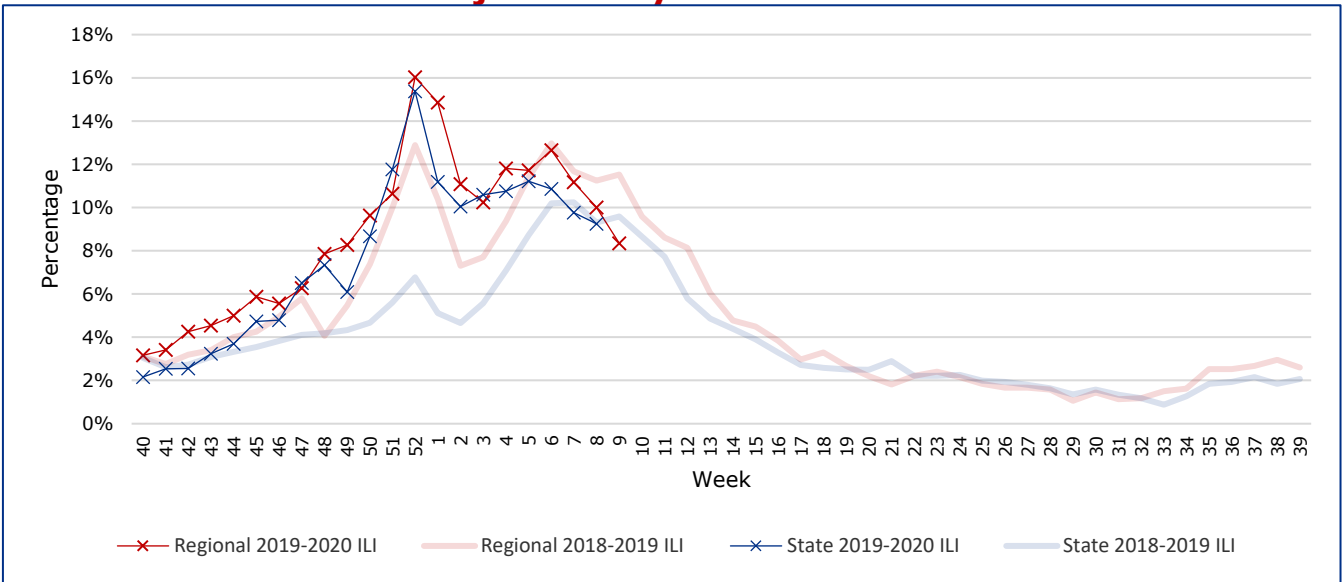
*Counties with total percent of visits due to ILI above 4.0% for the week are considered to have high/abnormal levels.

Map of Regional Flu Activity



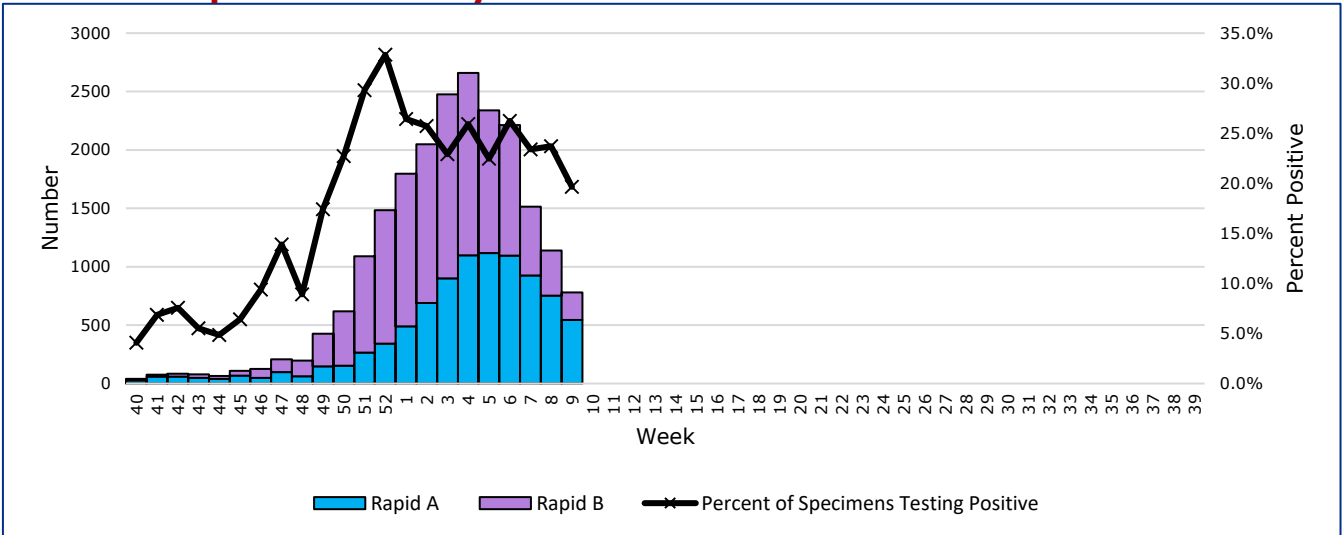
The map above depicts the previous week's reports of flu or influenza-like illness activity in each county. The legend on the bottom right of the map describes the meaning of each color.

Influenza-Like Illness Projections by Week



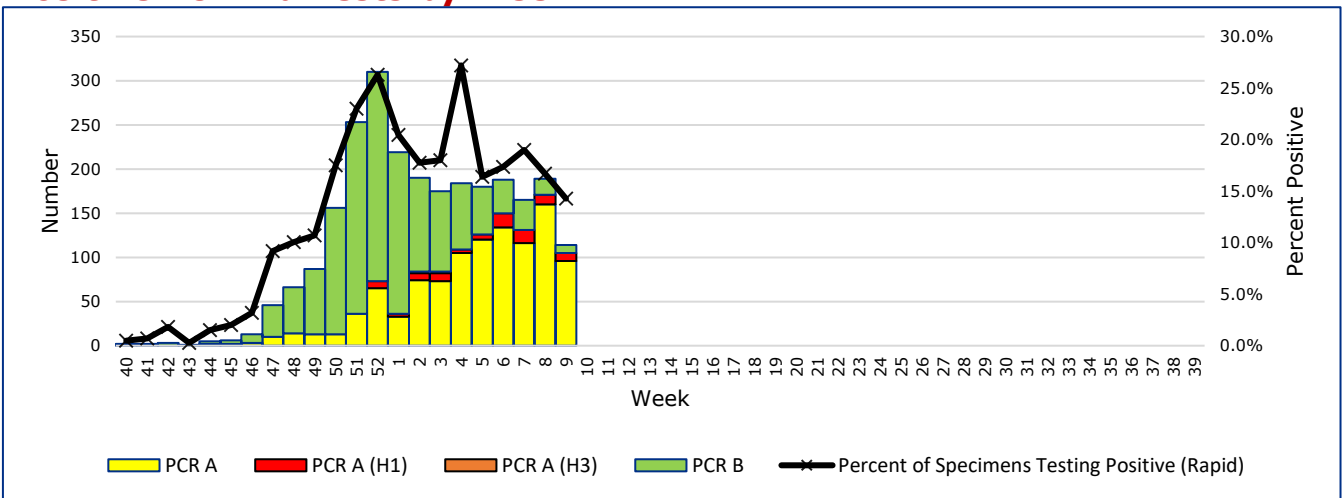
This chart documents the percentage of patient visits that were due to ILI at hospitals and clinics around the region. It compares our region's data with the state's data and also compares to last flu season.

Positive Rapid Flu Tests by Week



This chart documents the number of rapid tests that have come back positive for flu A and flu B each week throughout the region.

Positive PCR Flu Tests by Week



This chart documents the number of PCR tests that have come back positive for flu A and flu B each week throughout the region.

Flu Data by County

County	Week 09				Week 08				Week 07			
	Patient Visits	% with ILI	Flu A	Flu B	Patient Visits	% with ILI	Flu A	Flu B	Patient Visits	% with ILI	Flu A	Flu B
Andrews	541	0%	5	2	448	0%	21	6	520	0%	18	14
Borden	2	0%	0	0	0		0	0	1	0%	0	0
Brewster	14	0%	0	0	14	0%	0	0	9	0%	0	0
Coke	63	13%	0	0	50	8%	0	0	42	7%	0	0
Concho	80	13%	0	0	81	17%	3	0	37	3%	0	0
Crane	13	0%	0	0	16	6%	0	0	10	30%	0	0
Crockett	14	14%	0	0	16	0%	0	0	21	5%	0	0
Culberson	3	0%	0	0	6	0%	0	0	5	20%	0	0
Dawson	149	1%	9	1	181	1%	7	2	123	2%	6	1
Ector	6988	12%	167	27	5881	15%	192	48	5750	11%	135	30
El Paso	8329	4%	294	188	7900	5%	406	310	6022	7%	626	512
Gaines	137	4%	0	3	136	8%	7	0	27	0%	1	0
Glasscock	4	25%	0	0	57	7%	1	0	53	0%	0	0
Howard	429	7%	5	0	1146	9%	36	1	798	11%	32	3
Hudspeth	24	0%	0	0	13	15%	0	0	10	30%	0	0
Irion	24	17%	0	0	29	17%	0	0	116	5%	2	3
Jeff Davis	6	0%	0	0	2	0%	0	0	1	0%	0	0
Kimble	258	0%	0	1	226	0%	7	2	240	0%	4	3
Loving	0		0	0	0		0	0	0		0	0
McCulloch	673	10%	18	1	750	10%	20	3	657	8%	8	3
Martin	449	12%	2	0	519	14%	9	0	496	14%	11	1
Mason	26	12%	0	0	37	3%	1	0	32	0%	4	1
Menard	26	0%	0	0	19	11%	0	0	22	5%	0	0
Midland	135	8%	0	0	1574	23%	100	5	1561	18%	84	13
Pecos	1095	0%	20	10	942	0%	15	14	171	4%	0	0
Presidio	244	5%	3	0	179	5%	1	0	19	0%	0	0
Reagan	36	3%	0	0	24	8%	0	0	37	5%	0	0
Reeves	38	3%	0	0	761	3%	20	4	771	3%	17	11
Schleicher	20	10%	0	0	26	0%	0	0	18	6%	0	0
Sterling	26	8%	0	0	16	6%	0	0	26	27%	0	0
Sutton	160	16%	11	1	120	8%	2	1	165	14%	3	4
Terrell	4	0%	0	0	15	0%	0	0	3	0%	0	0
Tom Green	3719	9%	26	3	4509	11%	66	9	4347	12%	66	10
Upton	228	18%	4	2	245	13%	1	0	252	24%	8	5
Ward	238	13%	4	0	240	16%	2	0	803	18%	17	9
Winkler	359	10%	4	0	319	8%	6	1	331	14%	9	7
Total	24554	8.2%	572	239	26497	9.8%	923	406	23496	10.9%	1051	630

Flu-Associated Pediatric Deaths & Outbreaks

No flu-associated pediatric deaths have been reported in PHR 9/10 this flu season. No new outbreaks were reported during Week 09.