

# Weekly Flu Surveillance Report

Public Health Region 9/10

Week 10: March 1-March 7



Texas Department of State Health Services

## Disclaimer

Most cases of influenza are not reportable in the state of Texas, thus the data in this report was collected from hospitals, clinics, and schools throughout the region who have agreed to voluntarily submit data.

## Definitions

**ILI:** Influenza-Like Illness. This is an illness that resembles the flu, but has not been confirmed. **Rapid:** These tests are typically done in-house to quickly test for influenza. **PCR:** These tests are generally more precise than rapid tests and are performed at the DSHS state lab and many commercial labs to confirm a case of influenza.

## Geographic Spread of Influenza in the Region

No Activity	Sporadic	Local	Regional	Widespread
-------------	----------	-------	----------	------------

Geographic spread is determined using the CDC's guidelines for flu activity: <http://www.cdc.gov/flu/weekly/overview.htm>.

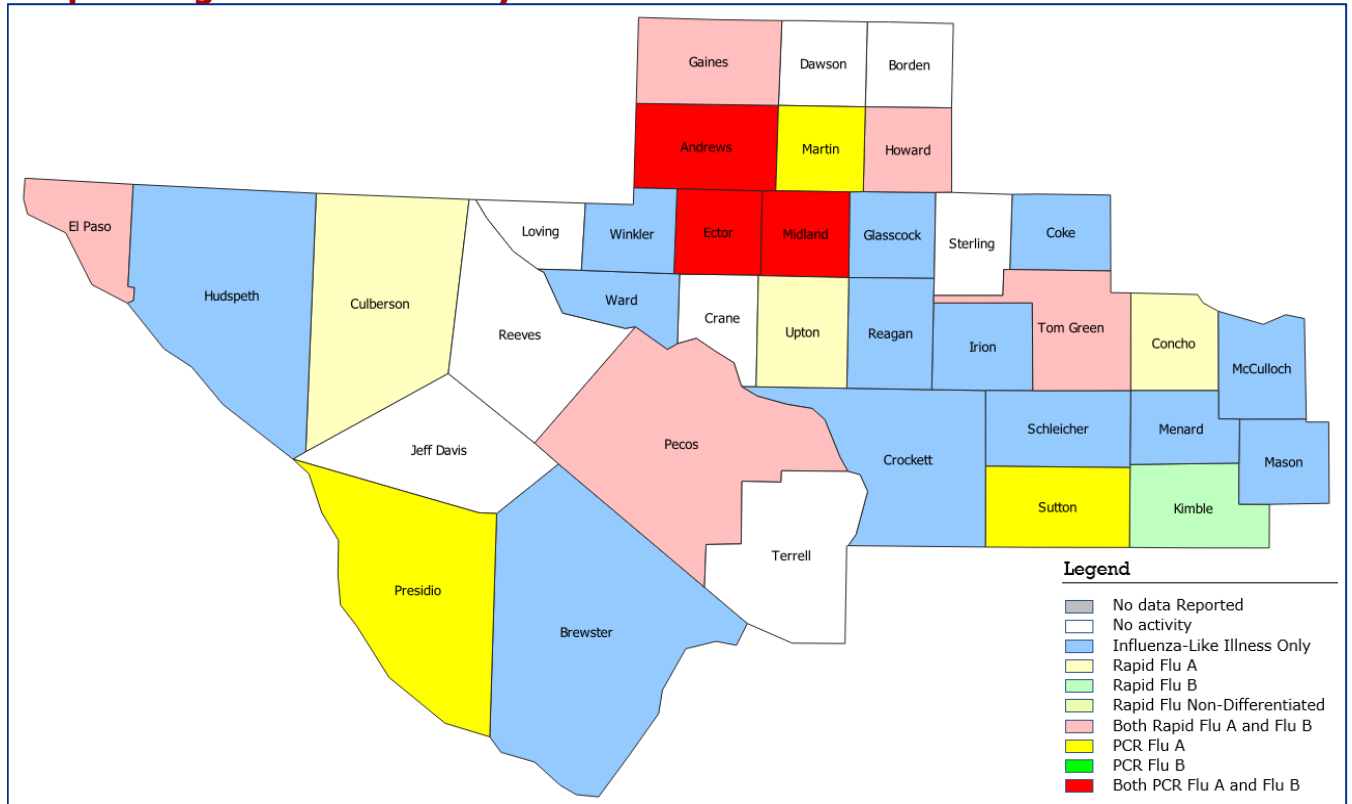
## Summary Data

Condition	Week 10	Week 09	Week 08
Number of Counties Reporting (36 total)	↑ 36	35	34
Number of Counties Reporting ILI	↑ 26	25	27
Number of Counties Reporting High Levels of ILI*	↑ 22	21	22
Number of Counties Reporting Flu A	↑ 14	13	20
Number of Counties Reporting Flu B	↓ 9	11	13
Number of Counties Reporting Flu A & Flu B	↓ 8	9	13

The arrows represent changes from the previous week. A sideways arrow means there was no change in that condition.

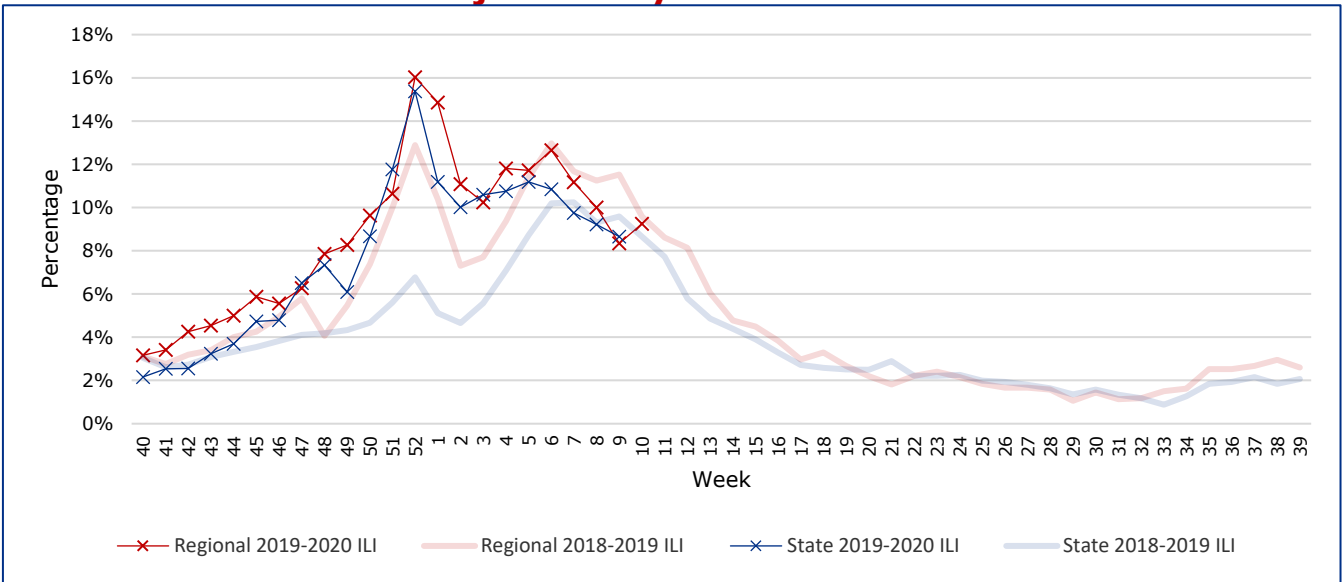
\*Counties with total percent of visits due to ILI above 4.0% for the week are considered to have high/abnormal levels.

## Map of Regional Flu Activity



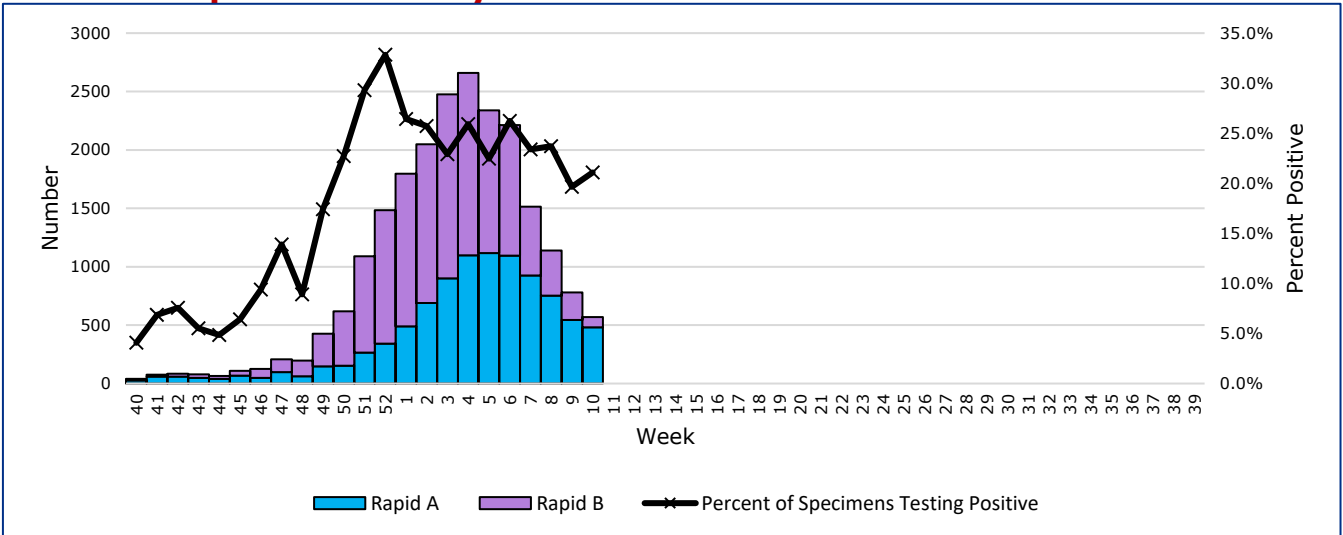
The map above depicts the previous week's reports of flu or influenza-like illness activity in each county. The legend on the bottom right of the map describes the meaning of each color.

## Influenza-Like Illness Projections by Week



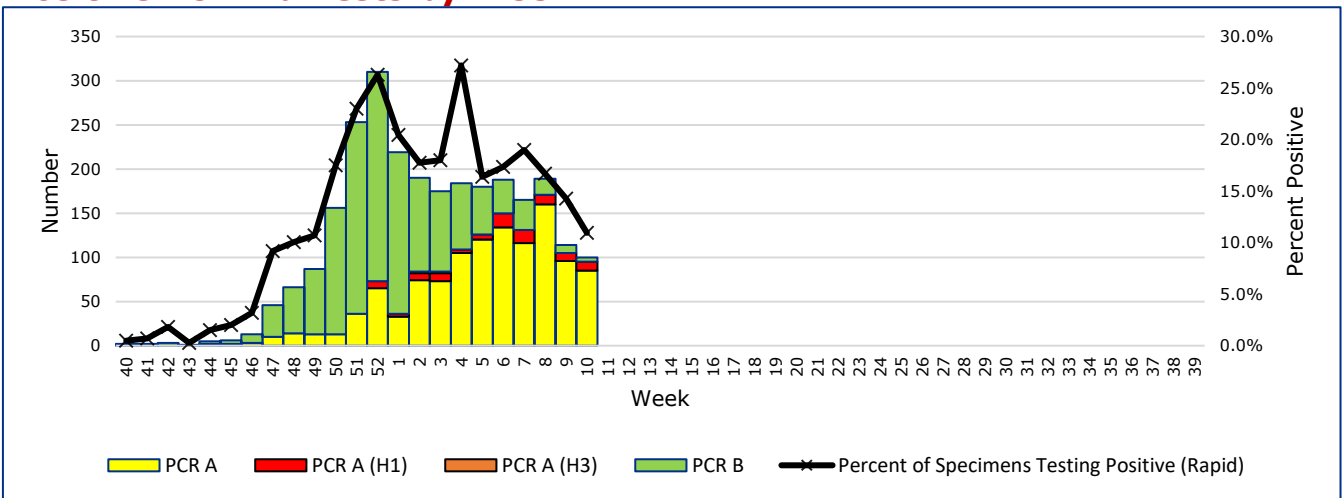
This chart documents the percentage of patient visits that were due to ILI at hospitals and clinics around the region. It compares our region's data with the state's data and also compares to last flu season.

## Positive Rapid Flu Tests by Week



This chart documents the number of rapid tests that have come back positive for flu A and flu B each week throughout the region.

## Positive PCR Flu Tests by Week



This chart documents the number of PCR tests that have come back positive for flu A and flu B each week throughout the region.

## Flu Data by County

County	Week 10				Week 09				Week 08			
	Patient Visits	% with ILI	Flu A	Flu B	Patient Visits	% with ILI	Flu A	Flu B	Patient Visits	% with ILI	Flu A	Flu B
Andrews	513	0%	6	1	541	0%	5	2	448	0%	21	6
Borden	3	0%	0	0	2	0%	0	0	0		0	0
Brewster	7	14%	0	0	14	0%	0	0	14	0%	0	0
Coke	44	14%	0	0	63	13%	0	0	50	8%	0	0
Concho	76	21%	4	0	80	13%	0	0	81	7%	3	0
Crane	15	0%	0	0	13	0%	0	0	16	6%	0	0
Crockett	24	8%	0	0	14	14%	0	0	16	0%	0	0
Culberson	7	0%	9	0	3	0%	0	0	6	0%	0	0
Dawson	166	0%	0	0	149	1%	9	1	181	1%	7	2
Ector	5954	15%	179	21	6988	12%	167	27	5881	12%	192	48
El Paso	8088	5%	239	56	8329	4%	294	188	7900	5%	406	310
Gaines	130	5%	1	3	137	4%	0	3	136	8%	7	0
Glasscock	3	33%	0	0	4	25%	0	0	57	0%	1	0
Howard	748	8%	14	2	429	7%	5	0	1146	9%	36	1
Hudspeth	18	11%	0	0	24	0%	0	0	13	15%	0	0
Irion	23	4%	0	0	24	17%	0	0	29	17%	0	0
Jeff Davis	4	0%	0	0	6	0%	0	0	2	0%	0	0
Kimble	238	0%	0	1	258	0%	0	1	226	0%	7	2
Loving	1	0%	0	0	0		0	0	0		0	0
McCulloch	92	8%	0	0	673	10%	18	1	750	10%	20	3
Martin	499	11%	2	0	449	12%	2	0	519	14%	9	0
Mason	27	4%	0	0	26	12%	0	0	37	3%	1	0
Menard	20	5%	0	0	26	0%	0	0	19	11%	0	0
Midland	1538	21%	67	3	135	8%	0	0	1574	23%	100	5
Pecos	1043	0%	12	3	1095	0%	20	10	942	0%	15	14
Presidio	217	8%	4	0	244	5%	3	0	179	2%	1	0
Reagan	27	4%	0	0	36	3%	0	0	24	8%	0	0
Reeves	22	0%	0	0	38	3%	0	0	761	3%	20	4
Schleicher	19	21%	0	0	20	10%	0	0	26	0%	0	0
Sterling	21	0%	0	0	26	8%	0	0	16	6%	0	0
Sutton	156	6%	1	0	160	16%	11	1	120	8%	2	1
Terrell	1	0%	0	0	4	0%	0	0	15	0%	0	0
Tom Green	3609	8%	34	1	3719	9%	26	3	4509	8%	66	9
Upton	233	18%	1	0	228	18%	4	2	245	13%	1	0
Ward	105	9%	0	0	238	13%	4	0	240	16%	2	0
Winkler	29	14%	0	0	359	10%	4	0	319	8%	6	1
<b>Total</b>	<b>23720</b>	<b>9.1%</b>	<b>573</b>	<b>91</b>	<b>24554</b>	<b>8.2%</b>	<b>572</b>	<b>239</b>	<b>26497</b>	<b>9.8%</b>	<b>923</b>	<b>406</b>

### Flu-Associated Pediatric Deaths & Outbreaks

No flu-associated pediatric deaths have been reported in PHR 9/10 this flu season. No new outbreaks were reported during Week 10.