

# Weekly Flu Surveillance Report

Public Health Region 9/10

Week 11: March 8-March 14



Texas Department of State Health Services

## Disclaimer

Most cases of influenza are not reportable in the state of Texas, thus the data in this report was collected from hospitals, clinics, and schools throughout the region who have agreed to voluntarily submit data.

## Definitions

**ILI:** Influenza-Like Illness. This is an illness that resembles the flu, but has not been confirmed. **Rapid:** These tests are typically done in-house to quickly test for influenza. **PCR:** These tests are generally more precise than rapid tests and are performed at the DSHS state lab and many commercial labs to confirm a case of influenza.

## Geographic Spread of Influenza in the Region

No Activity	Sporadic	Local	Regional	Widespread
-------------	----------	-------	----------	------------

Geographic spread is determined using the CDC's guidelines for flu activity: <http://www.cdc.gov/flu/weekly/overview.htm>.

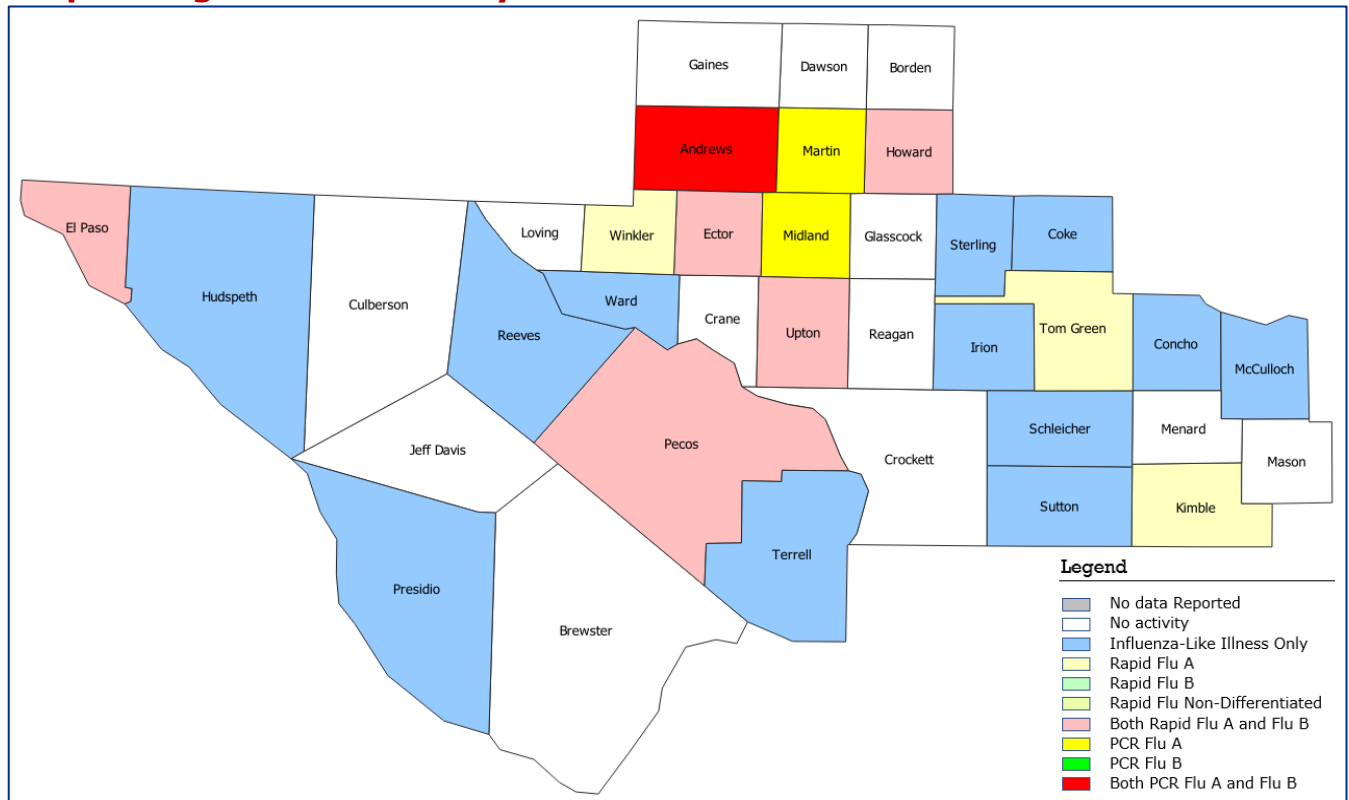
## Summary Data

Condition	Week 11	Week 10	Week 09
Number of Counties Reporting (36 total)	↔ 36	36	35
Number of Counties Reporting ILI	↓ 22	26	25
Number of Counties Reporting High Levels of ILI*	↓ 18	22	21
Number of Counties Reporting Flu A	↓ 11	16	13
Number of Counties Reporting Flu B	↓ 6	10	11
Number of Counties Reporting Flu A & Flu B	↓ 6	9	9

The arrows represent changes from the previous week. A sideways arrow means there was no change in that condition.

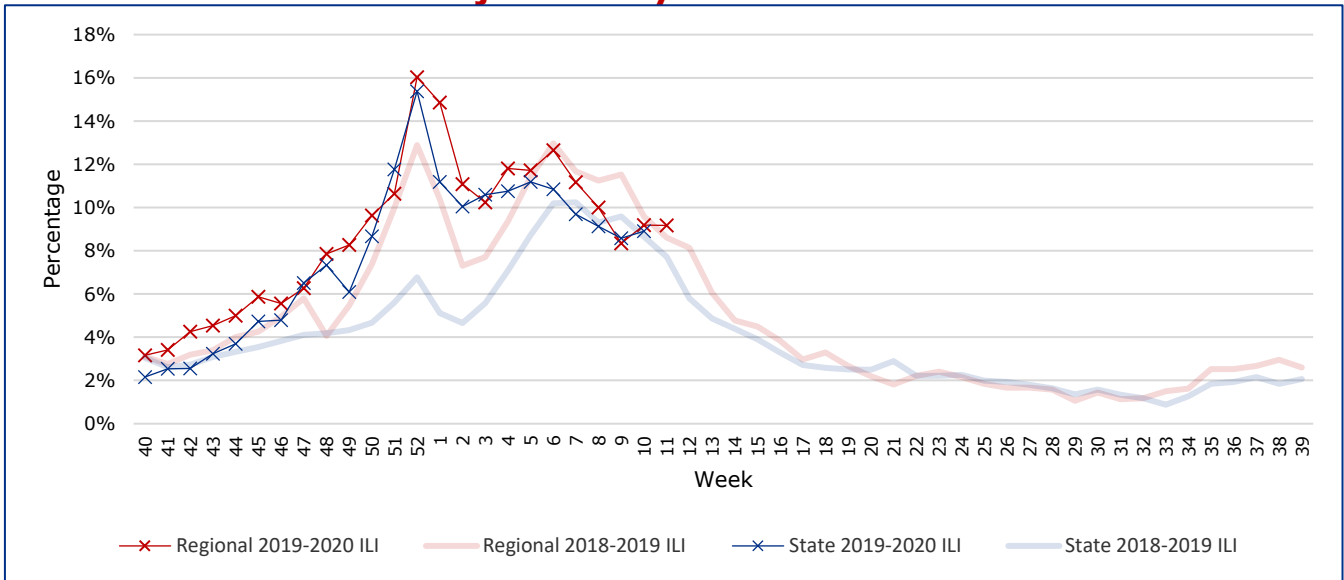
\*Counties with total percent of visits due to ILI above 4.0% for the week are considered to have high/abnormal levels.

## Map of Regional Flu Activity

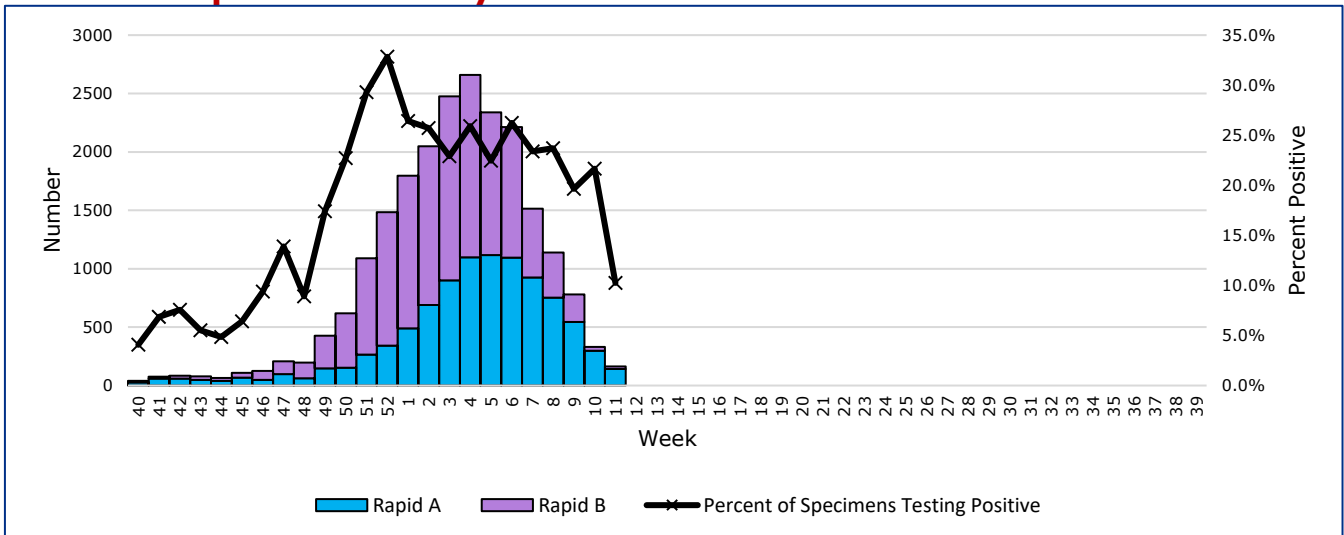


The map above depicts the previous week's reports of flu or influenza-like illness activity in each county. The legend on the bottom right of the map describes the meaning of each color.

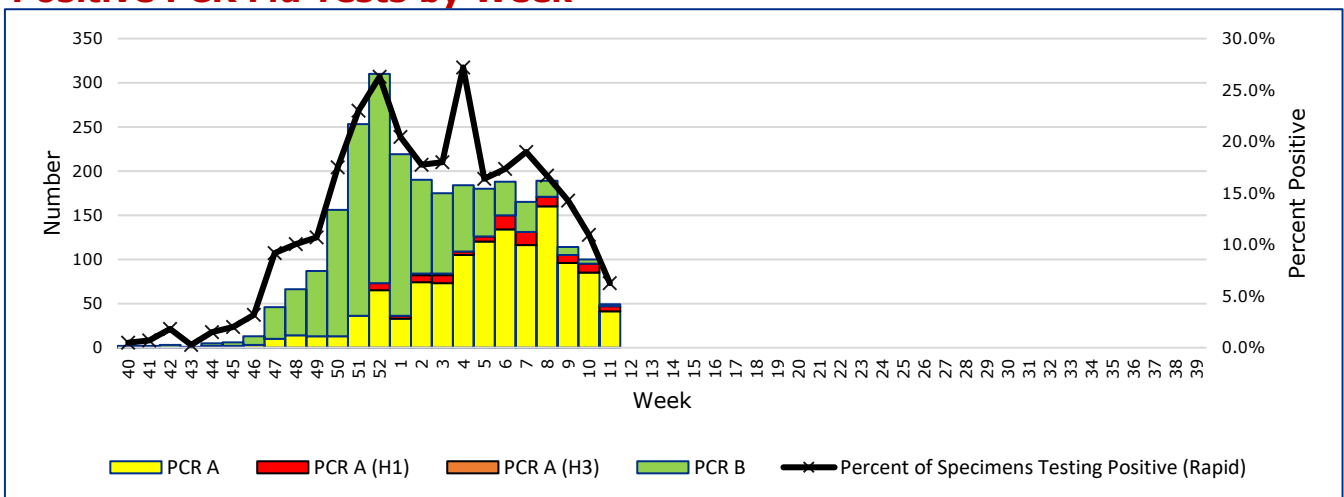
## Influenza-Like Illness Projections by Week



## Positive Rapid Flu Tests by Week



## Positive PCR Flu Tests by Week



## Flu Data by County

County	Week 11				Week 10				Week 09			
	Patient Visits	% with ILI	Flu A	Flu B	Patient Visits	% with ILI	Flu A	Flu B	Patient Visits	% with ILI	Flu A	Flu B
Andrews	460	1%	4	2	513	0%	6	1	541	0%	5	2
Borden	1	0%	0	0	3	0%	0	0	2	0%	0	0
Brewster	11	0%	0	0	7	14%	0	0	14	0%	0	0
Coke	56	16%	0	0	44	14%	0	0	63	13%	0	0
Concho	32	3%	0	0	76	22%	4	0	80	13%	0	0
Crane	7	0%	0	0	15	0%	0	0	13	0%	0	0
Crockett	26	0%	0	0	24	8%	0	0	14	14%	0	0
Culberson	7	0%	0	0	7	0%	9	0	3	0%	0	0
Dawson	99	0%	0	0	166	0%	0	0	149	1%	9	1
Ector	5261	14%	81	12	5955	15%	179	21	6988	9%	167	27
El Paso	8508	6%	24	6	8091	5%	31	3	8329	4%	294	188
Gaines	30	0%	0	0	131	5%	1	3	137	4%	0	3
Glasscock	2	0%	0	0	3	33%	0	0	4	25%	0	0
Howard	650	9%	9	1	748	8%	14	2	429	7%	5	0
Hudspeth	15	13%	0	0	18	11%	0	0	24	0%	0	0
Irion	20	10%	0	0	23	4%	0	0	24	17%	0	0
Jeff Davis	4	0%	0	0	4	0%	0	0	6	0%	0	0
Kimble	212	0%	1	0	238	0%	0	1	258	0%	0	1
Loving	1	0%	0	0	1	0%	0	0	0		0	0
McCulloch	88	6%	0	0	578	7%	14	0	673	10%	18	1
Martin	489	10%	2	0	499	11%	2	0	449	12%	2	0
Mason	29	0%	0	0	27	4%	0	0	26	12%	0	0
Menard	16	0%	0	0	20	5%	0	0	26	0%	0	0
Midland	1450	18%	32	0	1538	21%	67	3	135	8%	0	0
Pecos	831	1%	12	2	1043	0%	12	3	1095	0%	20	10
Presidio	10	10%	0	0	241	7%	4	0	244	2%	3	0
Reagan	30	0%	0	0	27	4%	0	0	36	3%	0	0
Reeves	28	7%	0	0	22	0%	0	0	38	3%	0	0
Schleicher	16	6%	0	0	19	21%	0	0	20	10%	0	0
Sterling	17	6%	0	0	21	0%	0	0	26	8%	0	0
Sutton	101	5%	0	0	156	6%	1	0	160	16%	11	1
Terrell	21	5%	0	0	1	0%	0	0	4	0%	0	0
Tom Green	3314	8%	14	0	3609	8%	34	1	3719	9%	26	3
Upton	253	30%	4	1	233	18%	6	0	228	18%	4	2
Ward	118	3%	0	0	105	9%	0	0	238	13%	4	0
Winkler	370	4%	2	0	286	9%	4	1	359	10%	4	0
<b>Total</b>	<b>22583</b>	<b>9.0%</b>	<b>185</b>	<b>24</b>	<b>24492</b>	<b>9.0%</b>	<b>388</b>	<b>39</b>	<b>24554</b>	<b>8.2%</b>	<b>572</b>	<b>239</b>

## Flu-Associated Pediatric Deaths & Outbreaks

No flu-associated pediatric deaths have been reported in PHR 9/10 this flu season. One flu outbreak was reported this week in a congregate setting in the region. During Week 11, 4 individuals had ILI. This week, (Week 12) 20 cases have been reported with 3 testing positive for Flu A and 1 positive for Flu B.