

Weekly Flu Surveillance Report

Public Health Region 9/10

Week 12: March 15-March 21



TEXAS
Health and Human
Services

Texas Department of State
Health Services

Disclaimer

Most cases of influenza are not reportable in the state of Texas, thus the data in this report was collected from hospitals, clinics, and schools throughout the region who have agreed to voluntarily submit data.

Definitions

ILI: Influenza-Like Illness. This is an illness that resembles the flu, but has not been confirmed. **Rapid:** These tests are typically done in-house to quickly test for influenza. **PCR:** These tests are generally more precise than rapid tests and are performed at the DSHS state lab and many commercial labs to confirm a case of influenza.

Geographic Spread of Influenza in the Region

No Activity	Sporadic	Local	Regional	Widespread
-------------	----------	-------	----------	------------

Geographic spread is determined using the CDC's guidelines for flu activity: <http://www.cdc.gov/flu/weekly/overview.htm>.

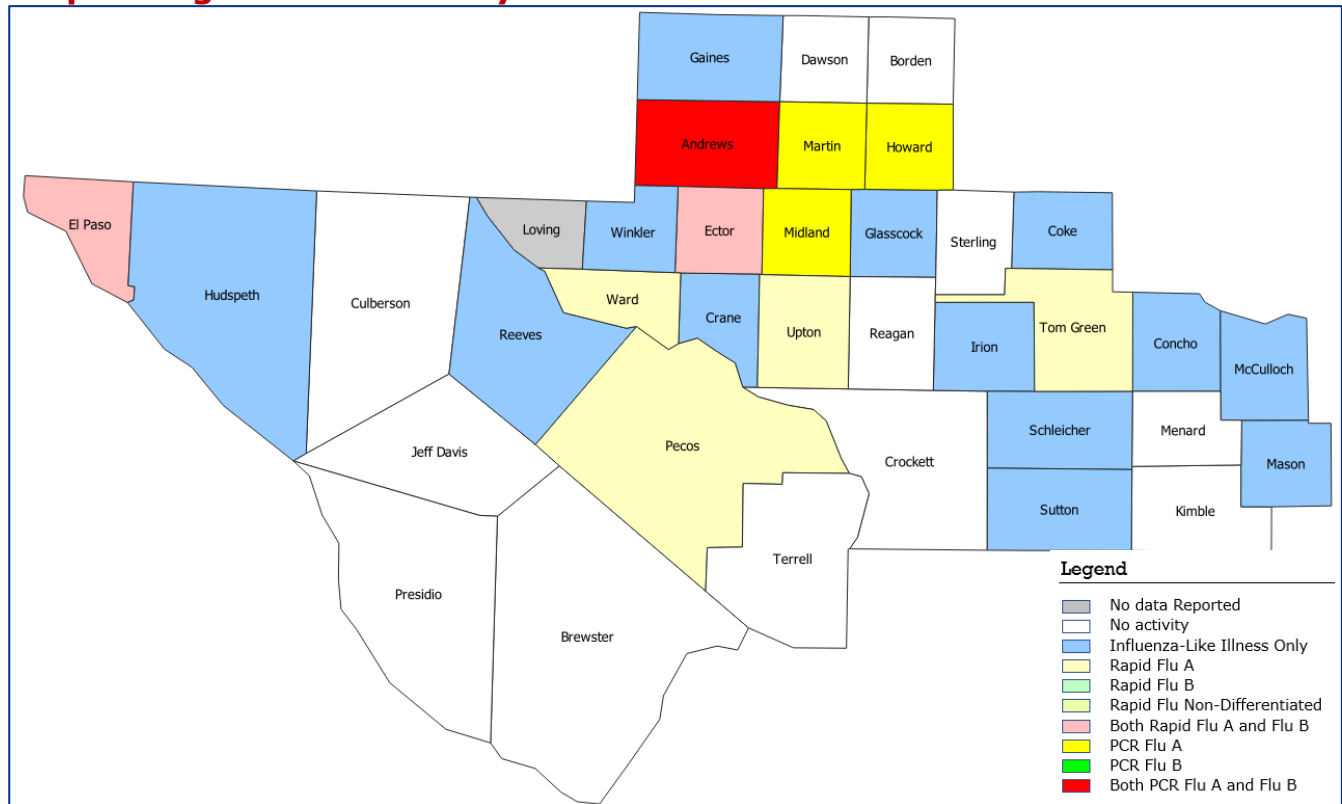
Summary Data

Condition	Week 12	Week 11	Week 10
Number of Counties Reporting (36 total)	↓ 35	36	36
Number of Counties Reporting ILI	→ 23	23	26
Number of Counties Reporting High Levels of ILI*	↓ 18	19	22
Number of Counties Reporting Flu A	↓ 10	13	16
Number of Counties Reporting Flu B	↓ 3	8	10
Number of Counties Reporting Flu A & Flu B	↓ 3	8	9

The arrows represent changes from the previous week. A sideways arrow means there was no change in that condition.

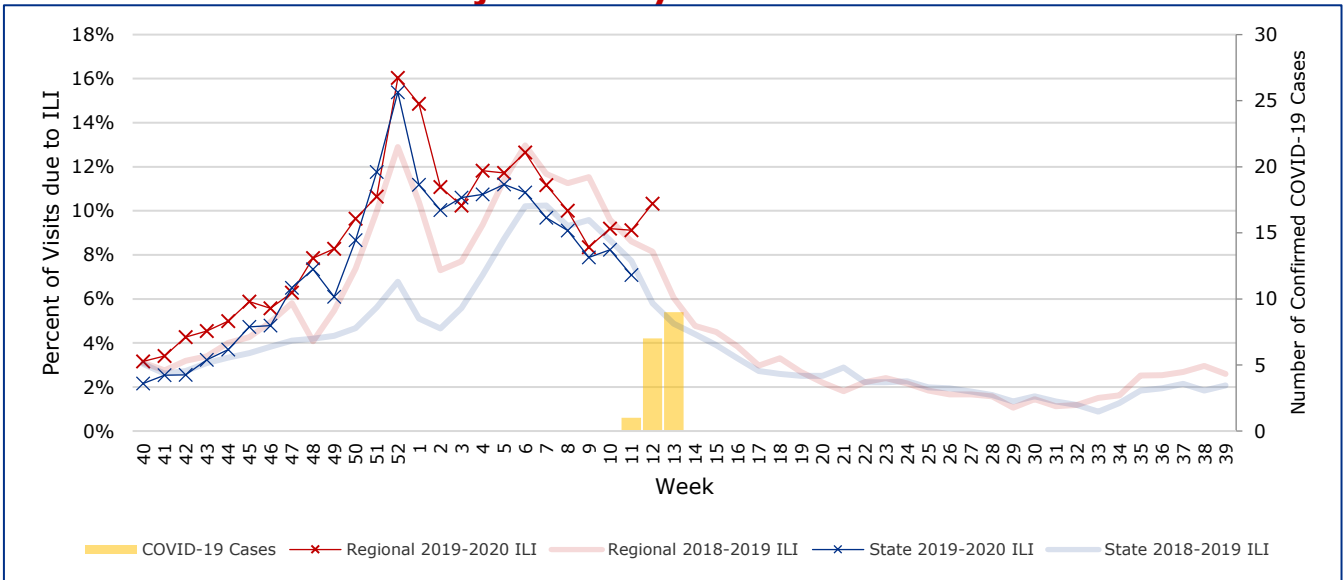
*Counties with total percent of visits due to ILI above 4.0% for the week are considered to have high/abnormal levels.

Map of Regional Flu Activity



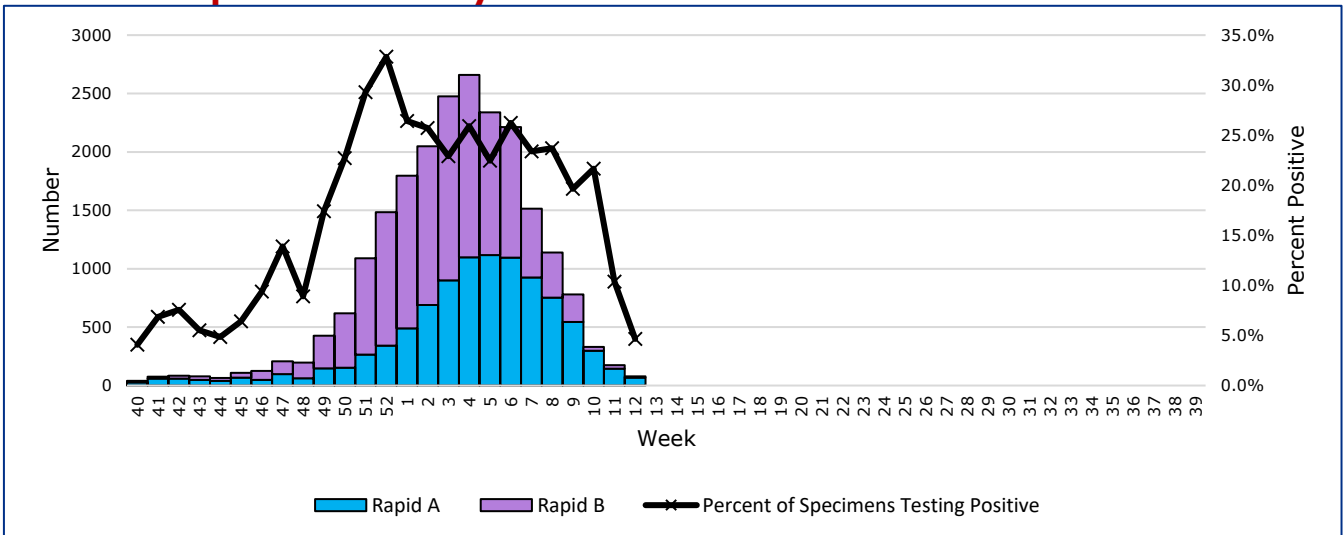
The map above depicts the previous week's reports of flu or influenza-like illness activity in each county. The legend on the bottom right of the map describes the meaning of each color.

Influenza-Like Illness Projections by Week



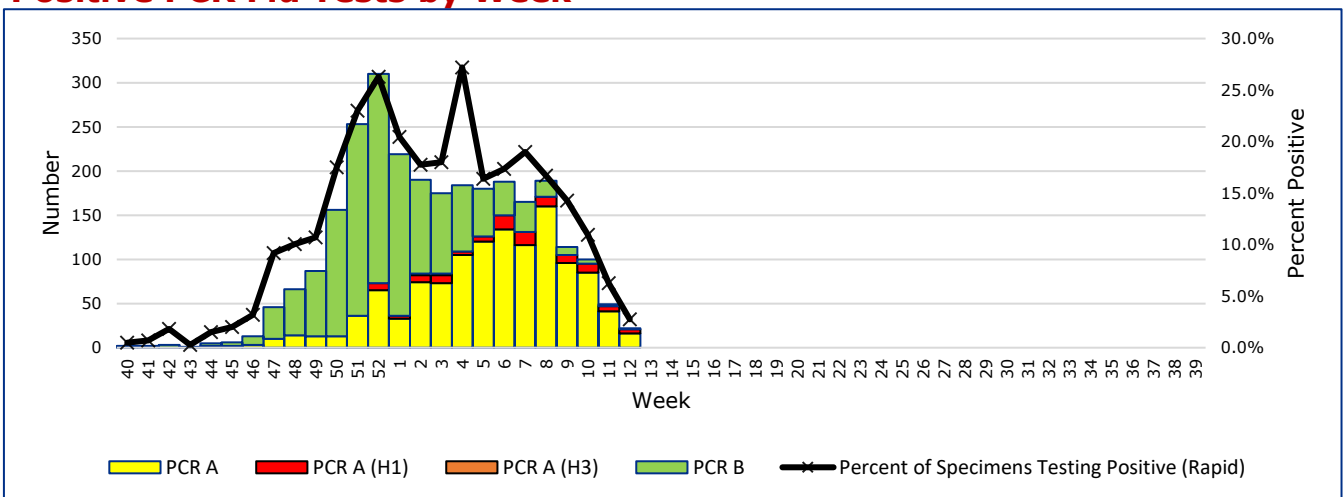
This chart documents the percentage of patient visits that were due to ILI at hospitals and clinics around the region. It compares our region's data with the state's data and also compares to last flu season. Only confirmed COVID-19 cases in PHR 9/10 are included on this graph.

Positive Rapid Flu Tests by Week



This chart documents the number of rapid tests that have come back positive for flu A and flu B each week throughout the region.

Positive PCR Flu Tests by Week



This chart documents the number of PCR tests that have come back positive for flu A and flu B each week throughout the region.

Flu Data by County

County	Week 12				Week 11				Week 10			
	Patient Visits	% with ILI	Flu A	Flu B	Patient Visits	% with ILI	Flu A	Flu B	Patient Visits	% with ILI	Flu A	Flu B
Andrews	371	1%	5	1	460	1%	4	2	513	0%	6	1
Borden	1	0%	0	0	1	0%	0	0	3	0%	0	0
Brewster	11	0%	0	0	11	0%	0	0	7	14%	0	0
Coke	56	4%	0	0	56	16%	0	0	44	14%	0	0
Concho	36	8%	0	0	32	3%	1	0	76	22%	4	0
Crane	10	10%	0	0	7	0%	0	0	15	0%	0	0
Crockett	19	0%	0	0	26	0%	0	0	24	8%	0	0
Culberson	8	0%	0	0	7	0%	0	0	7	0%	9	0
Dawson	25	0%	0	0	99	0%	0	0	166	0%	0	0
Ector	5017	15%	37	4	5261	14%	81	12	5955	12%	179	21
El Paso	7422	8%	11	6	8508	6%	24	6	8091	5%	31	3
Gaines	28	4%	0	0	276	6%	1	8	131	5%	1	3
Glasscock	4	50%	0	0	2	0%	0	0	3	33%	0	0
Howard	676	10%	4	0	650	9%	9	1	748	8%	14	2
Hudspeth	13	8%	0	0	15	13%	0	0	18	11%	0	0
Irion	17	12%	0	0	20	10%	0	0	23	4%	0	0
Jeff Davis	3	0%	0	0	4	0%	0	0	4	0%	0	0
Kimble	204	0%	0	0	212	0%	1	0	238	0%	0	1
Loving	0		0	0	1	0%	0	0	1	0%	0	0
McCulloch	85	6%	0	0	378	7%	1	1	578	7%	14	0
Martin	432	10%	3	0	489	10%	2	0	499	11%	2	0
Mason	25	12%	0	0	29	0%	0	0	27	4%	0	0
Menard	18	0%	0	0	16	0%	0	0	20	5%	0	0
Midland	1155	19%	7	0	1450	18%	32	0	1538	21%	67	3
Pecos	762	1%	1	0	831	1%	12	2	1043	0%	12	3
Presidio	8	0%	0	0	22	5%	0	0	241	4%	4	0
Reagan	39	0%	0	0	30	0%	0	0	27	4%	0	0
Reeves	15	13%	0	0	28	7%	0	0	22	0%	0	0
Schleicher	10	10%	0	0	16	6%	0	0	19	21%	0	0
Sterling	6	0%	0	0	17	6%	0	0	21	0%	0	0
Sutton	130	1%	0	0	101	5%	0	0	156	6%	1	0
Terrell	6	0%	0	0	21	5%	0	0	1	0%	0	0
Tom Green	2872	8%	7	0	3314	8%	14	0	3609	8%	34	1
Upton	199	25%	7	0	253	30%	4	1	233	18%	6	0
Ward	601	15%	3	0	118	3%	0	0	105	9%	0	0
Winkler	20	15%	0	0	370	4%	2	0	286	9%	4	1
Total	20304	10.1%	85	11	23131	9.0%	188	33	24492	9.0%	388	39

Flu-Associated Pediatric Deaths & Outbreaks

No flu-associated pediatric deaths have been reported in PHR 9/10 this flu season. One flu outbreak reported previously continued into Week 12. 53 total cases of persons with ILI have been reported during this outbreak with both cases of Flu A and Flu B being reported.