

Weekly Flu Surveillance Report

Public Health Region 9/10

Week 12: March 15-March 21



TEXAS
Health and Human
Services

Texas Department of State
Health Services

Disclaimer

Most cases of influenza are not reportable in the state of Texas, thus the data in this report was collected from hospitals, clinics, and schools throughout the region who have agreed to voluntarily submit data.

Definitions

ILI: Influenza-Like Illness. This is an illness that resembles the flu, but has not been confirmed. **Rapid:** These tests are typically done in-house to quickly test for influenza. **PCR:** These tests are generally more precise than rapid tests and are performed at the DSHS state lab and many commercial labs to confirm a case of influenza.

Geographic Spread of Influenza in the Region

No Activity	Sporadic	Local	Regional	Widespread
-------------	----------	-------	----------	------------

Geographic spread is determined using the CDC's guidelines for flu activity: <http://www.cdc.gov/flu/weekly/overview.htm>.

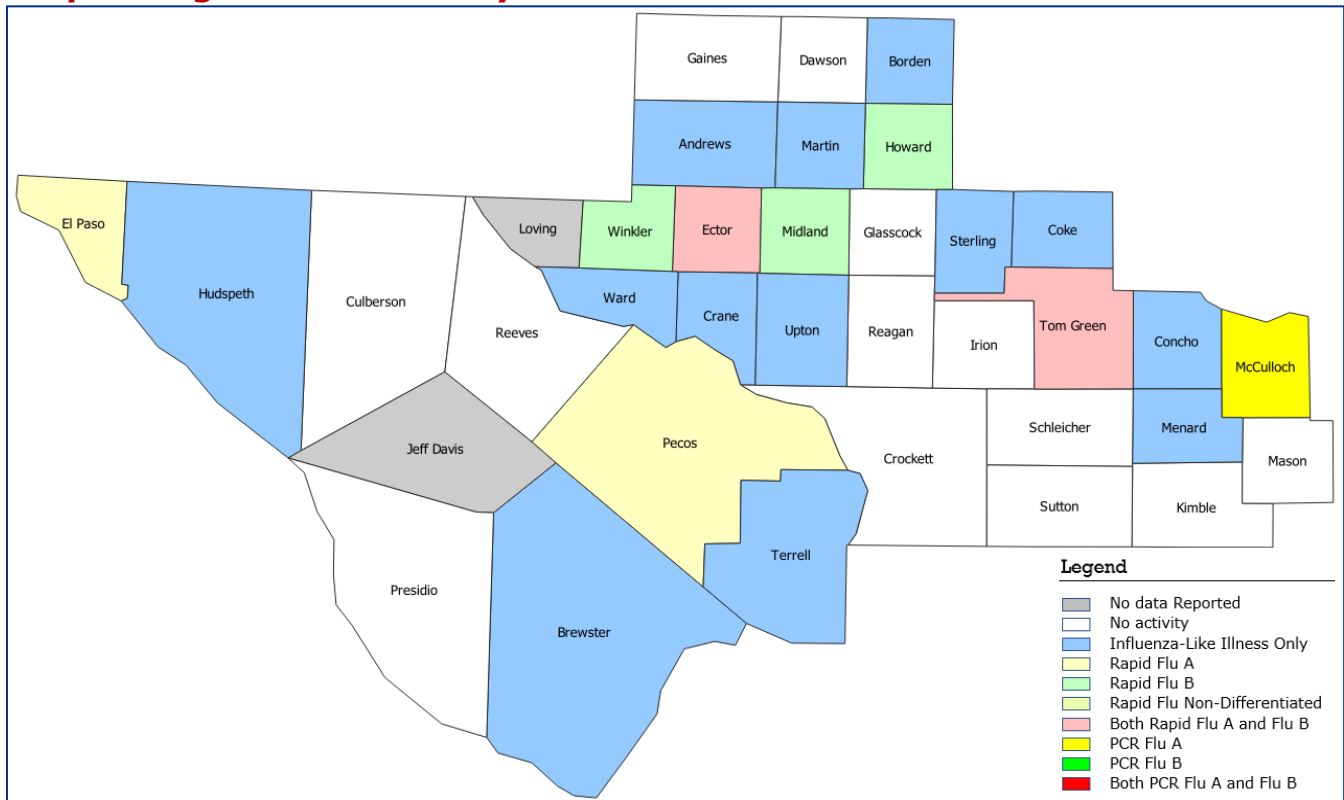
Summary Data

Condition	Week 13	Week 12	Week 11
Number of Counties Reporting (36 total)	↓ 34	35	36
Number of Counties Reporting ILI	↓ 21	23	23
Number of Counties Reporting High Levels of ILI*	↓ 17	18	19
Number of Counties Reporting Flu A	↓ 5	11	13
Number of Counties Reporting Flu B	→ 4	4	8
Number of Counties Reporting Flu A & Flu B	↓ 2	3	8

The arrows represent changes from the previous week. A sideways arrow means there was no change in that condition.

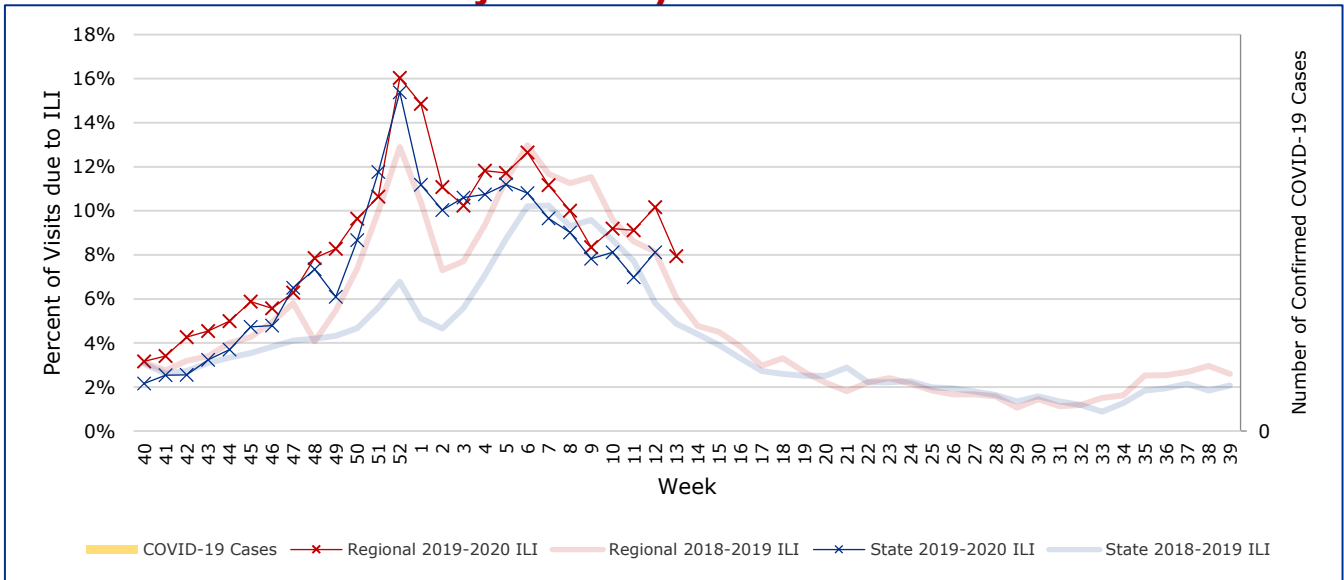
*Counties with total percent of visits due to ILI above 4.0% for the week are considered to have high/abnormal levels.

Map of Regional Flu Activity

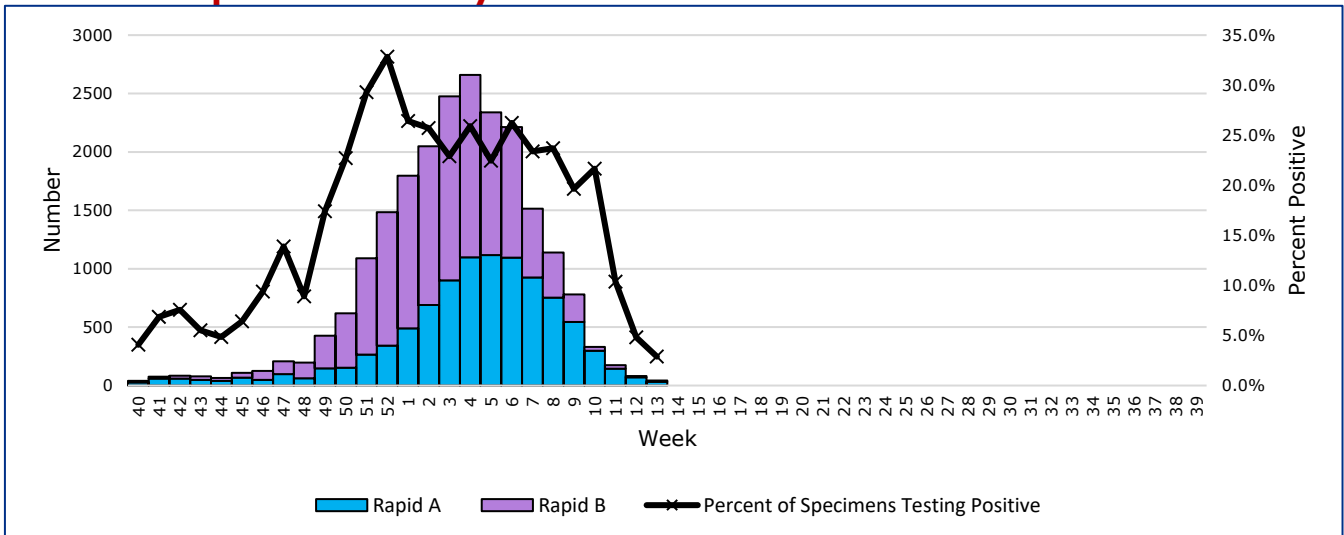


The map above depicts the previous week's reports of flu or influenza-like illness activity in each county. The legend on the bottom right of the map describes the meaning of each color.

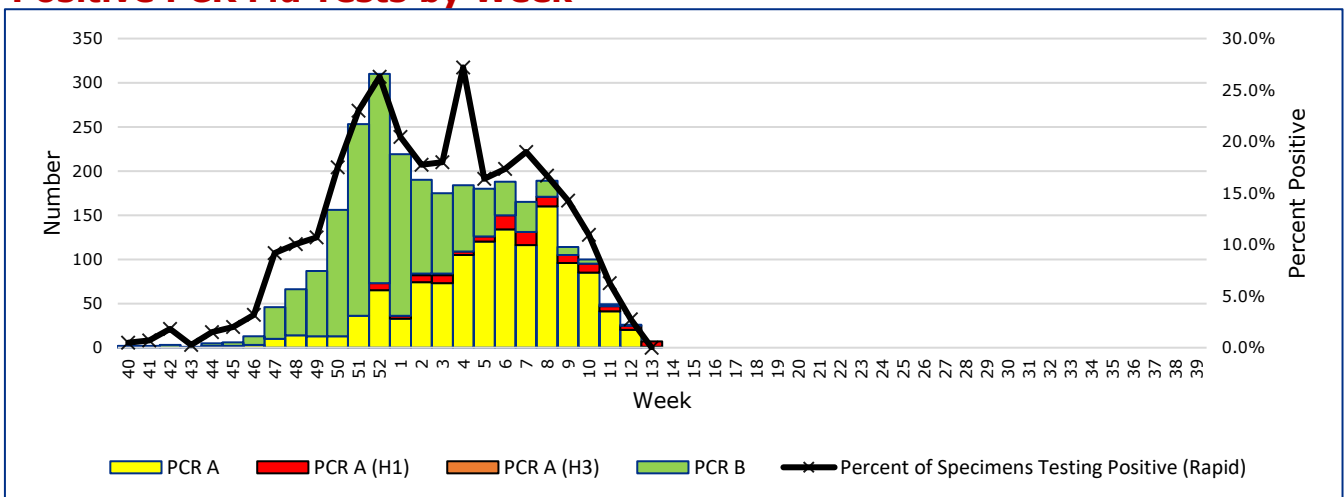
Influenza-Like Illness Projections by Week



Positive Rapid Flu Tests by Week



Positive PCR Flu Tests by Week



Flu Data by County

County	Week 13				Week 12				Week 11			
	Patient Visits	% with ILI	Flu A	Flu B	Patient Visits	% with ILI	Flu A	Flu B	Patient Visits	% with ILI	Flu A	Flu B
Andrews	250	0%	0	0	371	1%	5	1	460	1%	4	2
Borden	5	20%	0	0	1	0%	0	0	1	0%	0	0
Brewster	7	14%	0	0	11	0%	0	0	11	0%	0	0
Coke	52	6%	0	0	56	4%	0	0	56	16%	0	0
Concho	65	5%	0	0	36	8%	0	0	32	3%	1	0
Crane	10	10%	0	0	10	10%	0	0	7	0%	0	0
Crockett	5	0%	0	0	19	0%	0	0	26	0%	0	0
Culberson	5	0%	0	0	8	0%	0	0	7	0%	0	0
Dawson	21	0%	0	0	25	0%	0	0	99	0%	0	0
Ector	3575	12%	18	8	5017	15%	37	4	5261	11%	81	12
El Paso	6387	6%	5	0	7422	8%	11	6	8508	6%	24	6
Gaines	17	0%	0	0	28	4%	0	0	276	6%	1	8
Glasscock	3	0%	0	0	4	50%	0	0	2	0%	0	0
Howard	572	6%	0	1	676	10%	4	0	650	9%	9	1
Hudspeth	12	8%	0	0	13	8%	0	0	15	13%	0	0
Irion	10	0%	0	0	17	12%	0	0	20	10%	0	0
Jeff Davis	0		0	0	3	0%	0	0	4	0%	0	0
Kimble	147	0%	0	0	204	0%	0	0	212	0%	1	0
Loving	0		0	0	0		0	0	1	0%	0	0
McCulloch	374	13%	1	0	478	5%	7	0	378	7%	1	1
Martin	25	4%	0	0	432	10%	3	0	489	10%	2	0
Mason	19	0%	0	0	25	12%	0	0	29	0%	0	0
Menard	22	14%	0	0	18	0%	0	0	16	0%	0	0
Midland	900	16%	0	1	1155	19%	7	0	1450	18%	32	0
Pecos	674	1%	1	0	762	1%	1	0	831	1%	12	2
Presidio	5	0%	0	0	8	0%	0	0	22	5%	0	0
Reagan	15	0%	0	0	39	0%	0	0	30	0%	0	0
Reeves	14	0%	0	0	15	13%	0	0	28	7%	0	0
Schleicher	8	0%	0	0	10	10%	0	0	16	6%	0	0
Sterling	15	7%	0	0	6	0%	0	0	17	6%	0	0
Sutton	90	0%	0	0	130	1%	0	0	101	5%	0	0
Terrell	6	50%	0	0	6	0%	0	0	21	5%	0	0
Tom Green	2302	7%	7	1	2872	8%	7	0	3314	8%	14	0
Upton	68	62%	0	0	199	25%	7	0	253	30%	4	1
Ward	106	5%	0	0	601	15%	3	0	118	3%	0	0
Winkler	255	3%	0	1	263	6%	0	1	370	4%	2	0
Total	16041	7.8%	32	12	20940	10.0%	92	12	23131	9.0%	188	33

Flu-Associated Pediatric Deaths & Outbreaks

No flu-associated pediatric deaths have been reported in PHR 9/10 this flu season. One flu outbreak reported previously has ended with 55 cases of flu and ILI.