

Weekly Flu Surveillance Report

Public Health Region 9/10

Week 14: March 29-April 4



TEXAS
Health and Human
Services

Texas Department of State
Health Services

Disclaimer

Most cases of influenza are not reportable in the state of Texas, thus the data in this report was collected from hospitals, clinics, and schools throughout the region who have agreed to voluntarily submit data.

Definitions

ILI: Influenza-Like Illness. This is an illness that resembles the flu, but has not been confirmed. **Rapid:** These tests are typically done in-house to quickly test for influenza. **PCR:** These tests are generally more precise than rapid tests and are performed at the DSHS state lab and many commercial labs to confirm a case of influenza.

Geographic Spread of Influenza in the Region

No Activity	Sporadic	Local	Regional	Widespread
-------------	----------	-------	----------	------------

Geographic spread is determined using the CDC's guidelines for flu activity: <http://www.cdc.gov/flu/weekly/overview.htm>.

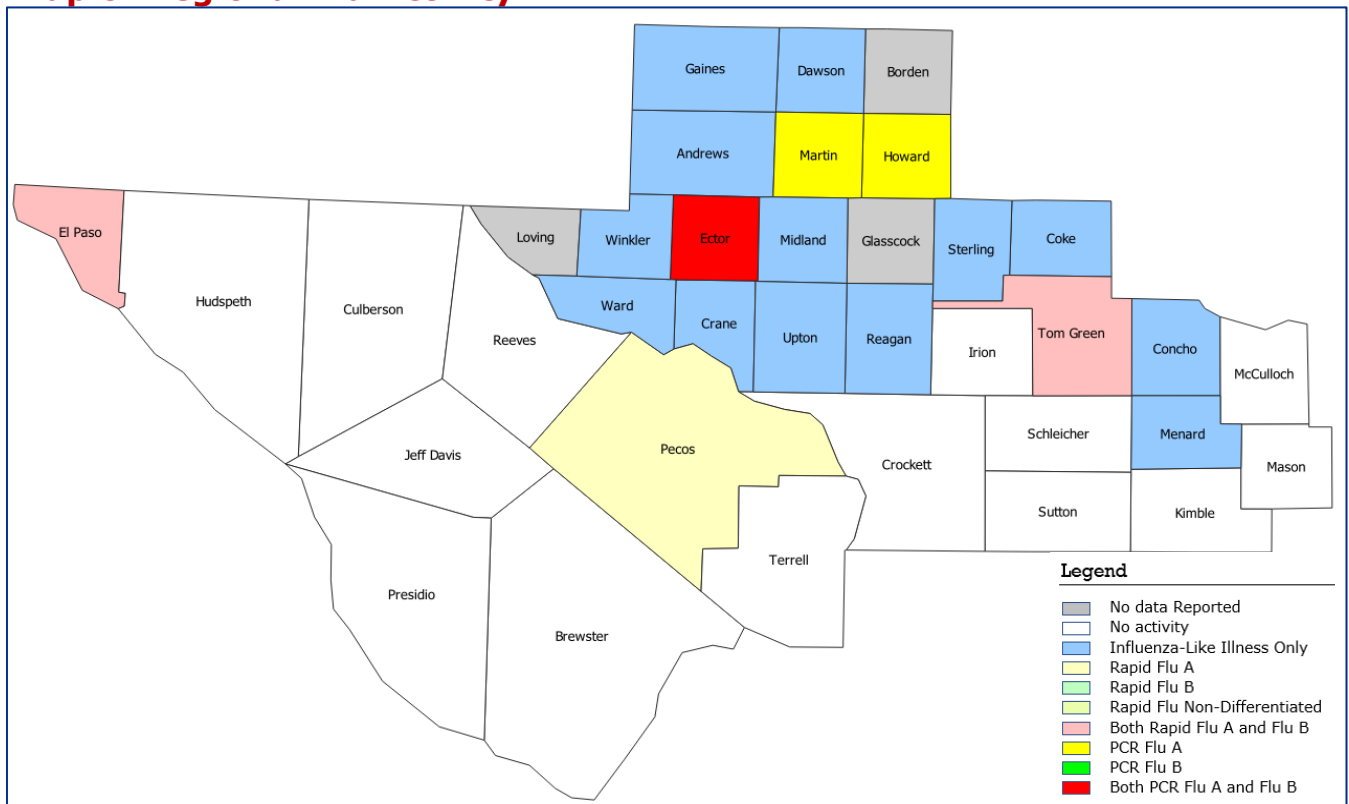
Summary Data

Condition	Week 14	Week 13	Week 12
Number of Counties Reporting (36 total)	↓ 33	34	35
Number of Counties Reporting ILI	↓ 19	21	23
Number of Counties Reporting High Levels of ILI*	→ 17	17	18
Number of Counties Reporting Flu A	→ 5	5	11
Number of Counties Reporting Flu B	↓ 3	4	4
Number of Counties Reporting Flu A & Flu B	↑ 3	2	3

The arrows represent changes from the previous week. A sideways arrow means there was no change in that condition.

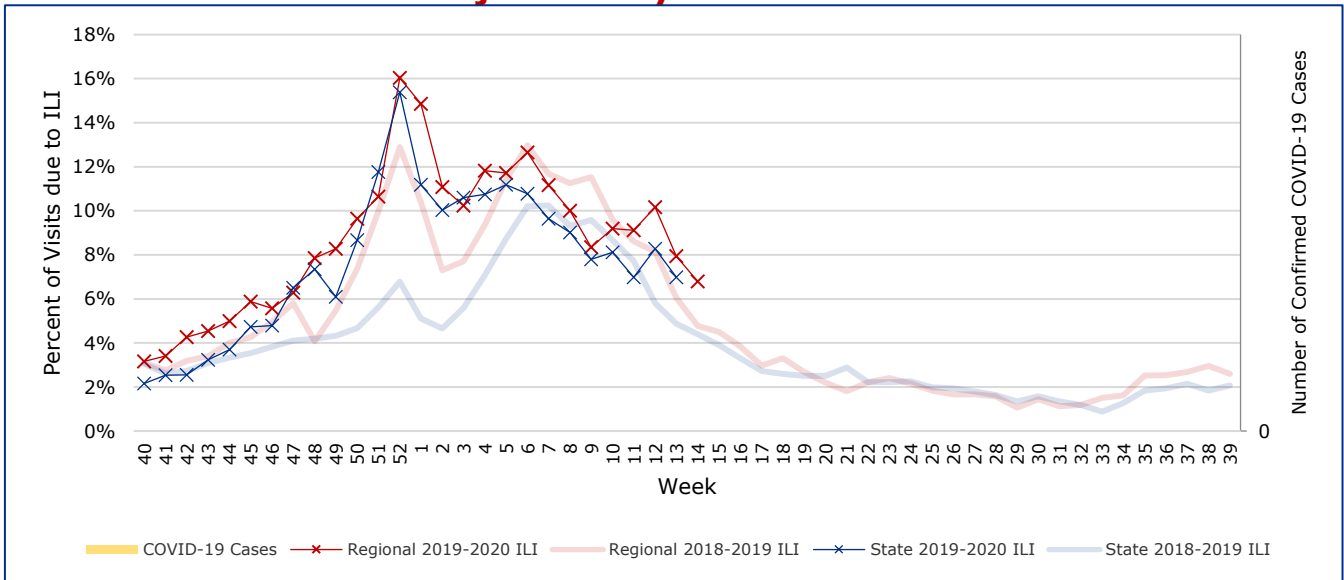
*Counties with total percent of visits due to ILI above 4.0% for the week are considered to have high/abnormal levels.

Map of Regional Flu Activity

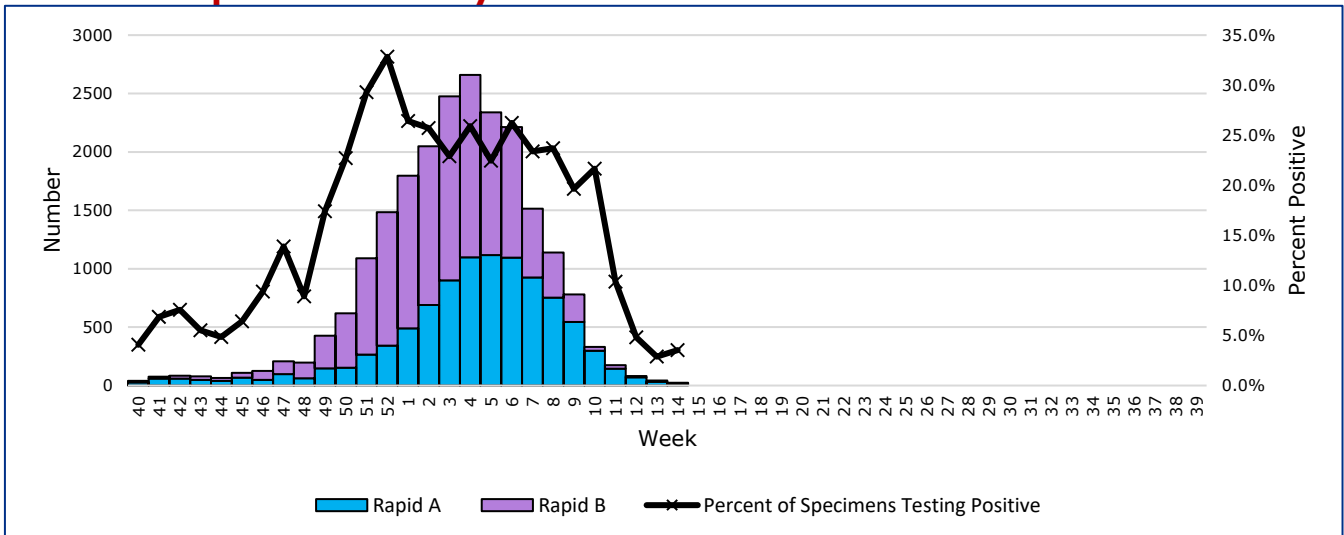


The map above depicts the previous week's reports of flu or influenza-like illness activity in each county. The legend on the bottom right of the map describes the meaning of each color.

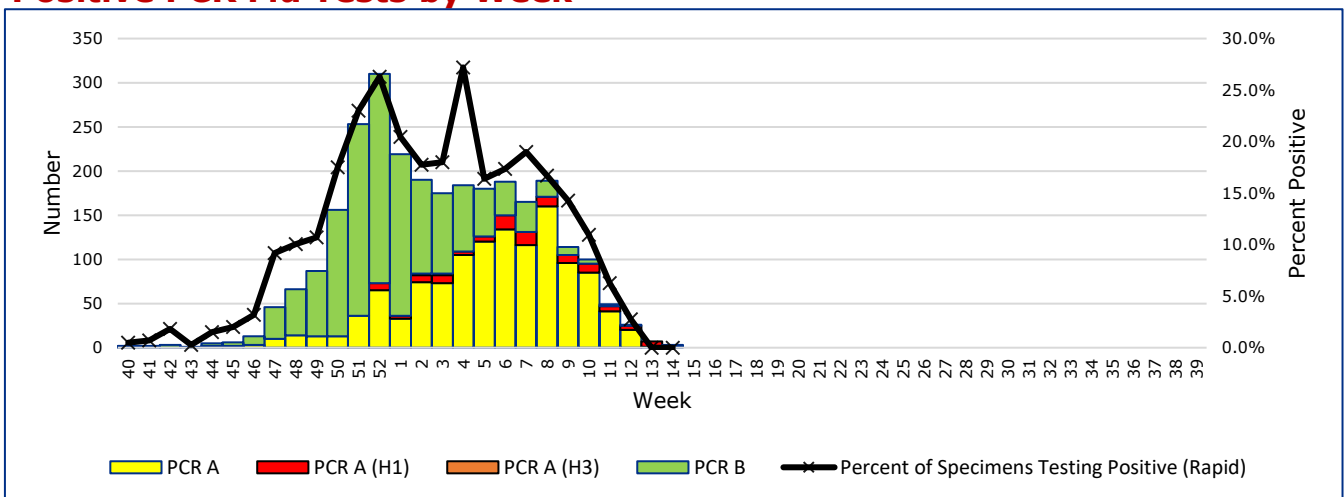
Influenza-Like Illness Projections by Week



Positive Rapid Flu Tests by Week



Positive PCR Flu Tests by Week



Flu Data by County

County	Week 14				Week 13				Week 12			
	Patient Visits	% with ILI	Flu A	Flu B	Patient Visits	% with ILI	Flu A	Flu B	Patient Visits	% with ILI	Flu A	Flu B
Andrews	18	6%	0	0	250	0%	0	0	371	1%	5	1
Borden	0		0	0	5	20%	0	0	1	0%	0	0
Brewster	7	0%	0	0	7	14%	0	0	11	0%	0	0
Coke	41	7%	0	0	52	6%	0	0	56	4%	0	0
Concho	41	7%	0	0	65	5%	0	0	36	8%	0	0
Crane	5	20%	0	0	10	10%	0	0	10	10%	0	0
Crockett	7	0%	0	0	5	0%	0	0	19	0%	0	0
Culberson	6	0%	0	0	5	0%	0	0	8	0%	0	0
Dawson	23	9%	0	0	21	0%	0	0	25	0%	0	0
Ector	1978	15%	10	5	3575	12%	18	8	5017	12%	37	4
El Paso	5219	5%	1	2	6387	6%	5	0	7422	8%	11	6
Gaines	97	3%	0	0	17	0%	0	0	28	4%	0	0
Glasscock	0		0	0	3	0%	0	0	4	50%	0	0
Howard	518	8%	1	0	572	6%	0	1	676	10%	4	0
Hudspeth	13	0%	0	0	12	8%	0	0	13	8%	0	0
Irion	7	0%	0	0	10	0%	0	0	17	12%	0	0
Jeff Davis	1	0%	0	0	0		0	0	3	0%	0	0
Kimble	3	0%	0	0	147	0%	0	0	204	0%	0	0
Loving	0		0	0	0		0	0	0		0	0
McCulloch	67	0%	0	0	374	13%	1	0	478	5%	7	0
Martin	201	9%	1	0	25	4%	0	0	432	10%	3	0
Mason	20	0%	0	0	19	0%	0	0	25	12%	0	0
Menard	15	7%	0	0	22	14%	0	0	18	0%	0	0
Midland	781	8%	0	0	900	16%	0	1	1155	19%	7	0
Pecos	573	0%	1	0	674	1%	1	0	762	1%	1	0
Presidio	5	0%	0	0	5	0%	0	0	8	0%	0	0
Reagan	12	17%	0	0	15	0%	0	0	39	0%	0	0
Reeves	4	0%	0	0	14	0%	0	0	15	13%	0	0
Schleicher	16	0%	0	0	8	0%	0	0	10	10%	0	0
Sterling	8	25%	0	0	15	7%	0	0	6	0%	0	0
Sutton	88	0%	0	0	90	0%	0	0	130	0%	0	0
Terrell	2	0%	0	0	6	50%	0	0	6	0%	0	0
Tom Green	1777	5%	4	3	2302	7%	7	1	2872	8%	7	0
Upton	48	17%	0	0	68	62%	0	0	199	25%	7	0
Ward	83	6%	0	0	106	5%	0	0	601	15%	3	0
Winkler	247	5%	0	0	255	3%	0	1	263	6%	0	1
Total	11931	6.8%	18	10	16041	7.8%	32	12	20940	10.0%	92	12

Flu-Associated Pediatric Deaths & Outbreaks

No flu-associated pediatric deaths have been reported in PHR 9/10 this flu season. No new flu outbreaks were reported for Week 14.