

# Weekly Flu Surveillance Report

Public Health Region 9/10

Week 15: April 5-April 11



**TEXAS**  
Health and Human  
Services

Texas Department of State  
Health Services

## Disclaimer

Most cases of influenza are not reportable in the state of Texas, thus the data in this report was collected from hospitals, clinics, and schools throughout the region who have agreed to voluntarily submit data.

## Definitions

**ILI:** Influenza-Like Illness. This is an illness that resembles the flu, but has not been confirmed. **Rapid:** These tests are typically done in-house to quickly test for influenza. **PCR:** These tests are generally more precise than rapid tests and are performed at the DSHS state lab and many commercial labs to confirm a case of influenza.

## Geographic Spread of Influenza in the Region

|             |          |       |          |            |
|-------------|----------|-------|----------|------------|
| No Activity | Sporadic | Local | Regional | Widespread |
|-------------|----------|-------|----------|------------|

Geographic spread is determined using the CDC's guidelines for flu activity: <http://www.cdc.gov/flu/weekly/overview.htm>.

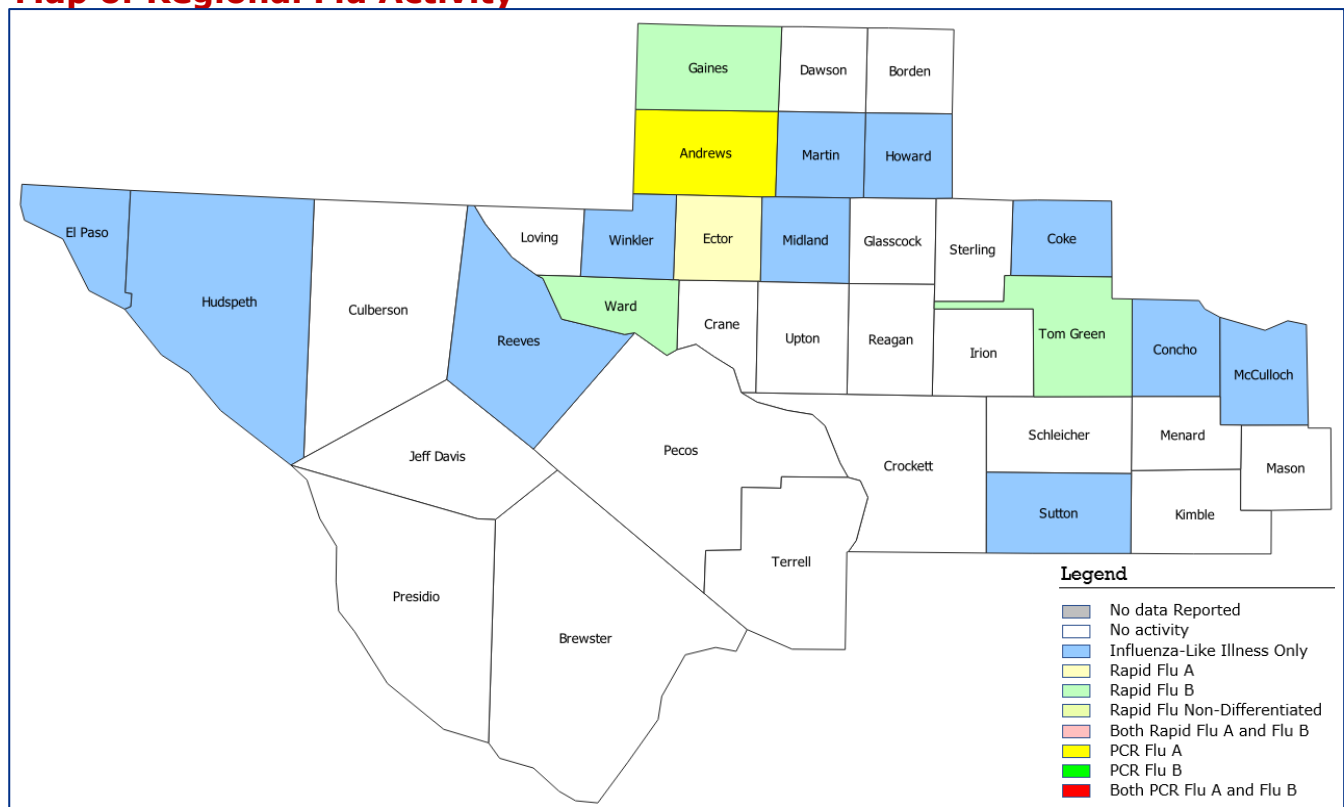
## Summary Data

| Condition  | Week 15 | Week 14 | Week 13 |
|--|---------|---------|---------|
| Number of Counties Reporting (36 total)          | ↑ 36    | 33      | 34      |
| Number of Counties Reporting ILI                 | ↓ 15    | 20      | 21      |
| Number of Counties Reporting High Levels of ILI* | ↓ 9     | 17      | 17      |
| Number of Counties Reporting Flu A               | ↓ 2     | 5       | 5       |
| Number of Counties Reporting Flu B               | ↓ 3     | 4       | 4       |
| Number of Counties Reporting Flu A & Flu B       | ↓ 0     | 3       | 2       |

The arrows represent changes from the previous week. A sideways arrow means there was no change in that condition.

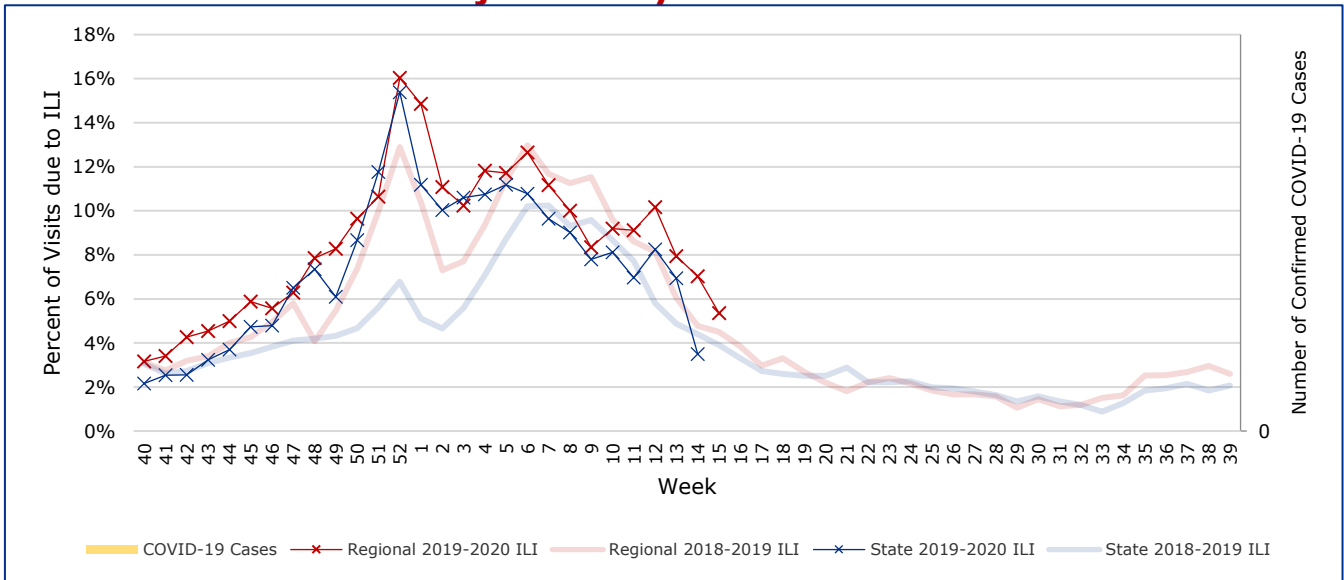
\*Counties with total percent of visits due to ILI above 4.0% for the week are considered to have high/abnormal levels.

## Map of Regional Flu Activity

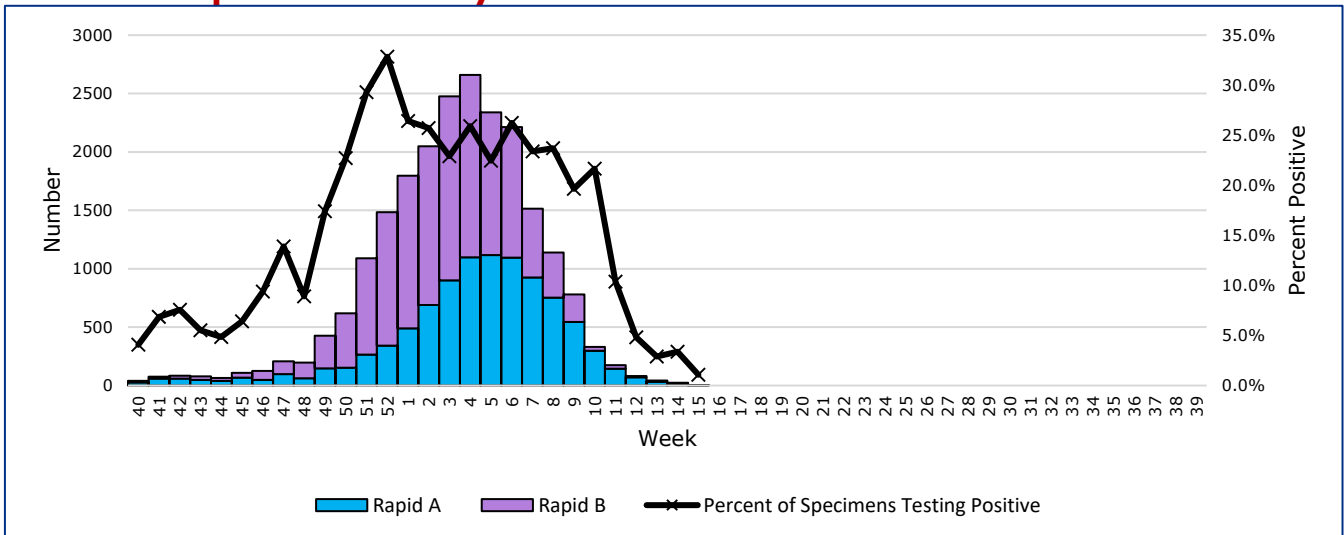


The map above depicts the previous week's reports of flu or influenza-like illness activity in each county. The legend on the bottom right of the map describes the meaning of each color.

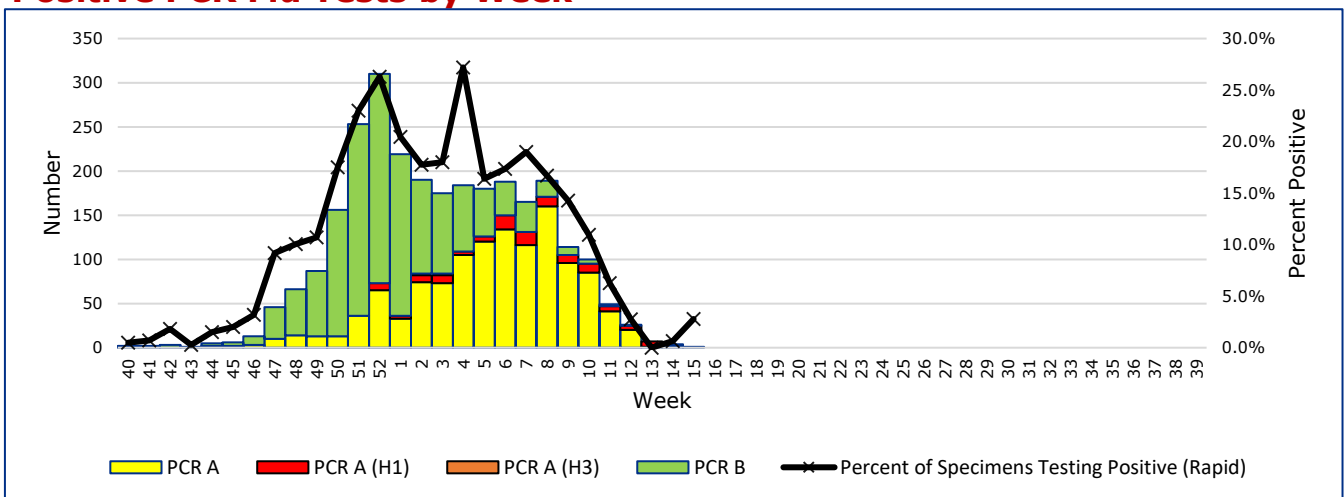
## Influenza-Like Illness Projections by Week



## Positive Rapid Flu Tests by Week



## Positive PCR Flu Tests by Week



## Flu Data by County

| County       | Week 15        |             |          |          | Week 14        |             |           |           | Week 13        |             |           |           |
|--------------|----------------|-------------|----------|----------|----------------|-------------|-----------|-----------|----------------|-------------|-----------|-----------|
|              | Patient Visits | % with ILI  | Flu A    | Flu B    | Patient Visits | % with ILI  | Flu A     | Flu B     | Patient Visits | % with ILI  | Flu A     | Flu B     |
| Andrews      | 229            | 0%          | 1        | 0        | 254            | 0%          | 0         | 1         | 250            | 0%          | 0         | 0         |
| Borden       | 1              | 0%          | 0        | 0        | 0              |             | 0         | 0         | 5              | 20%         | 0         | 0         |
| Brewster     | 6              | 0%          | 0        | 0        | 7              | 0%          | 0         | 0         | 7              | 14%         | 0         | 0         |
| Coke         | 32             | 3%          | 0        | 0        | 41             | 7%          | 0         | 0         | 52             | 6%          | 0         | 0         |
| Concho       | 59             | 5%          | 0        | 0        | 41             | 7%          | 0         | 0         | 65             | 5%          | 0         | 0         |
| Crane        | 2              | 0%          | 0        | 0        | 5              | 20%         | 0         | 0         | 10             | 10%         | 0         | 0         |
| Crockett     | 7              | 0%          | 0        | 0        | 7              | 0%          | 0         | 0         | 5              | 0%          | 0         | 0         |
| Culberson    | 10             | 0%          | 0        | 0        | 6              | 0%          | 0         | 0         | 5              | 0%          | 0         | 0         |
| Dawson       | 16             | 0%          | 0        | 0        | 23             | 9%          | 0         | 0         | 21             | 0%          | 0         | 0         |
| Ector        | 2309           | 8%          | 1        | 0        | 1978           | 15%         | 10        | 5         | 3575           | 9%          | 18        | 8         |
| El Paso      | 4380           | 4%          | 0        | 0        | 5219           | 5%          | 1         | 2         | 6387           | 6%          | 5         | 0         |
| Gaines       | 98             | 6%          | 0        | 1        | 97             | 3%          | 0         | 0         | 17             | 0%          | 0         | 0         |
| Glasscock    | 7              | 0%          | 0        | 0        | 0              |             | 0         | 0         | 3              | 0%          | 0         | 0         |
| Howard       | 476            | 6%          | 0        | 0        | 518            | 8%          | 1         | 0         | 572            | 6%          | 0         | 1         |
| Hudspeth     | 5              | 20%         | 0        | 0        | 13             | 0%          | 0         | 0         | 12             | 8%          | 0         | 0         |
| Irion        | 4              | 0%          | 0        | 0        | 7              | 0%          | 0         | 0         | 10             | 0%          | 0         | 0         |
| Jeff Davis   | 2              | 0%          | 0        | 0        | 1              | 0%          | 0         | 0         | 0              |             | 0         | 0         |
| Kimble       | 126            | 0%          | 0        | 0        | 3              | 0%          | 0         | 0         | 147            | 0%          | 0         | 0         |
| Loving       | 1              | 0%          | 0        | 0        | 0              |             | 0         | 0         | 0              |             | 0         | 0         |
| McCulloch    | 533            | 18%         | 0        | 0        | 361            | 13%         | 0         | 0         | 374            | 13%         | 1         | 0         |
| Martin       | 272            | 1%          | 0        | 0        | 201            | 9%          | 1         | 0         | 25             | 4%          | 0         | 0         |
| Mason        | 15             | 0%          | 0        | 0        | 20             | 0%          | 0         | 0         | 19             | 0%          | 0         | 0         |
| Menard       | 13             | 0%          | 0        | 0        | 15             | 7%          | 0         | 0         | 22             | 14%         | 0         | 0         |
| Midland      | 75             | 1%          | 0        | 0        | 781            | 8%          | 0         | 0         | 900            | 16%         | 0         | 1         |
| Pecos        | 61             | 0%          | 0        | 0        | 573            | 0%          | 1         | 0         | 674            | 1%          | 1         | 0         |
| Presidio     | 2              | 0%          | 0        | 0        | 5              | 0%          | 0         | 0         | 5              | 0%          | 0         | 0         |
| Reagan       | 12             | 0%          | 0        | 0        | 12             | 17%         | 0         | 0         | 15             | 0%          | 0         | 0         |
| Reeves       | 10             | 10%         | 0        | 0        | 4              | 0%          | 0         | 0         | 14             | 0%          | 0         | 0         |
| Schleicher   | 4              | 0%          | 0        | 0        | 16             | 0%          | 0         | 0         | 8              | 0%          | 0         | 0         |
| Sterling     | 8              | 0%          | 0        | 0        | 8              | 25%         | 0         | 0         | 15             | 7%          | 0         | 0         |
| Sutton       | 66             | 2%          | 0        | 0        | 88             | 0%          | 0         | 0         | 90             | 0%          | 0         | 0         |
| Terrell      | 1              | 0%          | 0        | 0        | 2              | 0%          | 0         | 0         | 6              | 50%         | 0         | 0         |
| Tom Green    | 1553           | 3%          | 0        | 1        | 1777           | 5%          | 4         | 3         | 2302           | 7%          | 7         | 1         |
| Upton        | 14             | 0%          | 0        | 0        | 48             | 17%         | 0         | 0         | 68             | 62%         | 0         | 0         |
| Ward         | 311            | 6%          | 0        | 1        | 83             | 6%          | 0         | 0         | 106            | 5%          | 0         | 0         |
| Winkler      | 14             | 14%         | 0        | 0        | 247            | 5%          | 0         | 0         | 255            | 3%          | 0         | 1         |
| <b>Total</b> | <b>10734</b>   | <b>5.2%</b> | <b>2</b> | <b>3</b> | <b>12461</b>   | <b>6.9%</b> | <b>18</b> | <b>11</b> | <b>16041</b>   | <b>7.8%</b> | <b>32</b> | <b>12</b> |

## Flu-Associated Pediatric Deaths & Outbreaks

No flu-associated pediatric deaths have been reported in PHR 9/10 this flu season. No new flu outbreaks were reported for Week 15.