

# Weekly Flu Surveillance Report

Public Health Region 9/10

Week 16: April 12-April 18



**TEXAS**  
Health and Human  
Services

Texas Department of State  
Health Services

## Disclaimer

Most cases of influenza are not reportable in the state of Texas, thus the data in this report was collected from hospitals, clinics, and schools throughout the region who have agreed to voluntarily submit data.

## Definitions

**ILI:** Influenza-Like Illness. This is an illness that resembles the flu, but has not been confirmed. **Rapid:** These tests are typically done in-house to quickly test for influenza. **PCR:** These tests are generally more precise than rapid tests and are performed at the DSHS state lab and many commercial labs to confirm a case of influenza.

## Geographic Spread of Influenza in the Region

No Activity	Sporadic	Local	Regional	Widespread
-------------	----------	-------	----------	------------

Geographic spread is determined using the CDC's guidelines for flu activity: <http://www.cdc.gov/flu/weekly/overview.htm>.

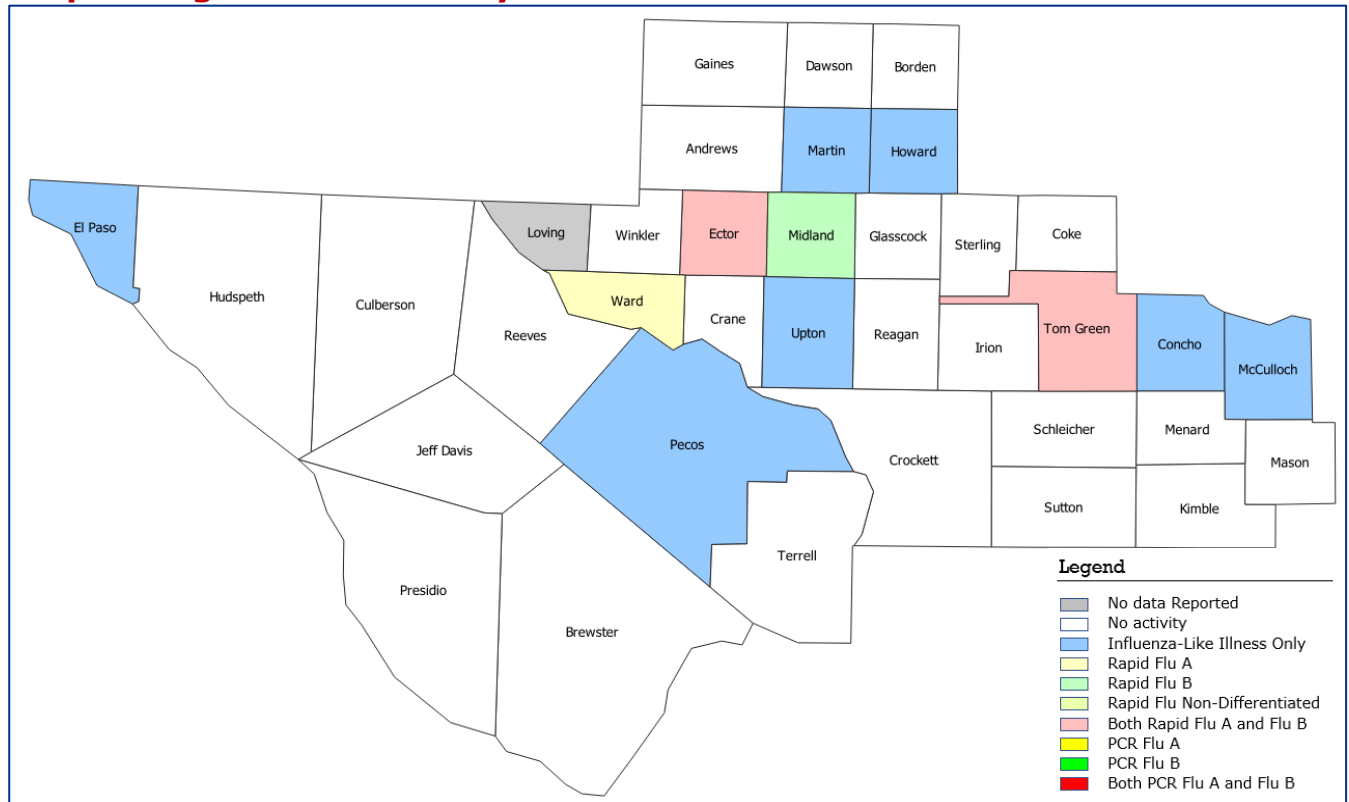
## Summary Data

Condition	Week 16	Week 15	Week 14
Number of Counties Reporting (36 total)	↓ 35	36	33
Number of Counties Reporting ILI	↓ 11	15	20
Number of Counties Reporting High Levels of ILI*	↓ 6	9	17
Number of Counties Reporting Flu A	↑ 3	2	5
Number of Counties Reporting Flu B	↓ 2	3	4
Number of Counties Reporting Flu A & Flu B	↑ 2	0	3

The arrows represent changes from the previous week. A sideways arrow means there was no change in that condition.

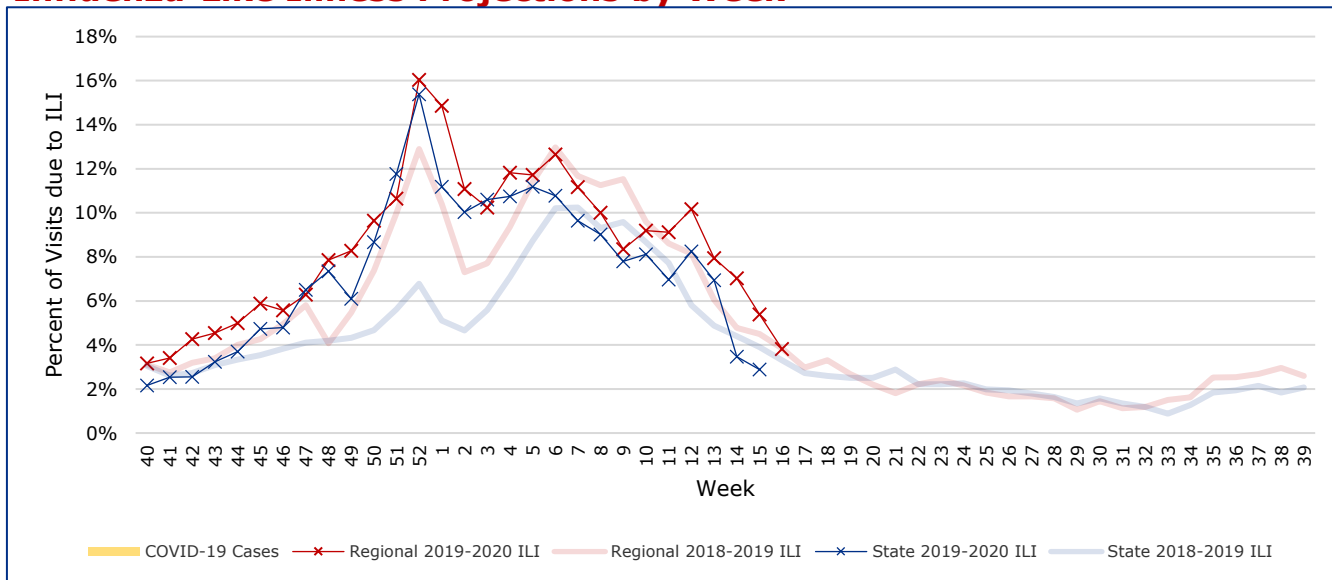
\*Counties with total percent of visits due to ILI above 4.0% for the week are considered to have high/abnormal levels.

## Map of Regional Flu Activity



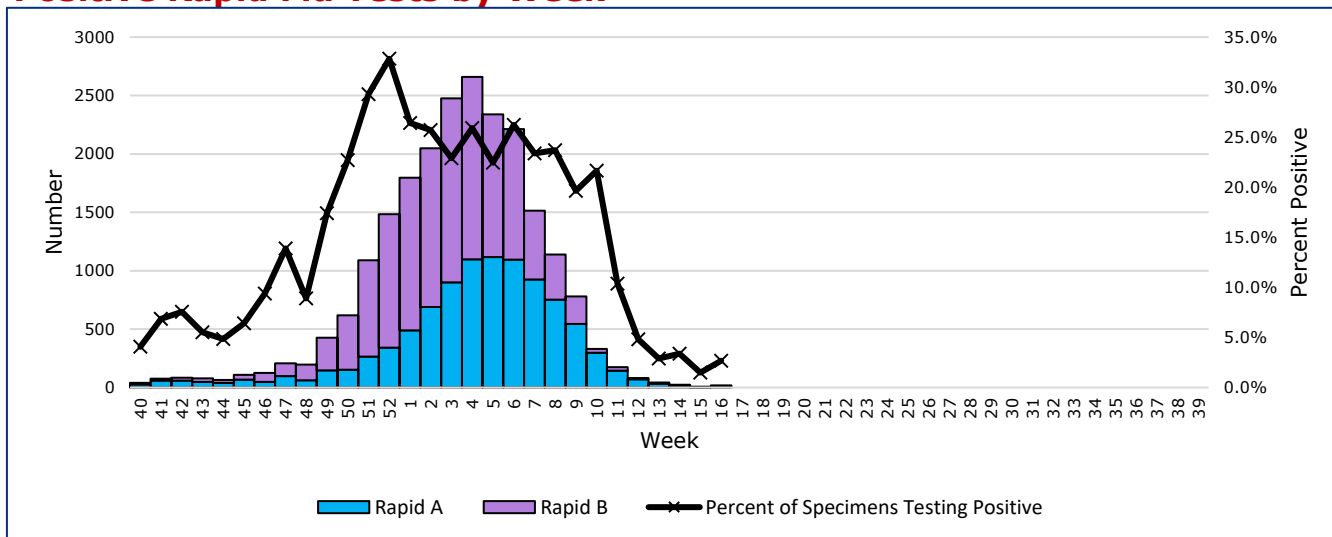
The map above depicts the previous week's reports of flu or influenza-like illness activity in each county. The legend on the bottom right of the map describes the meaning of each color.

## Influenza-Like Illness Projections by Week



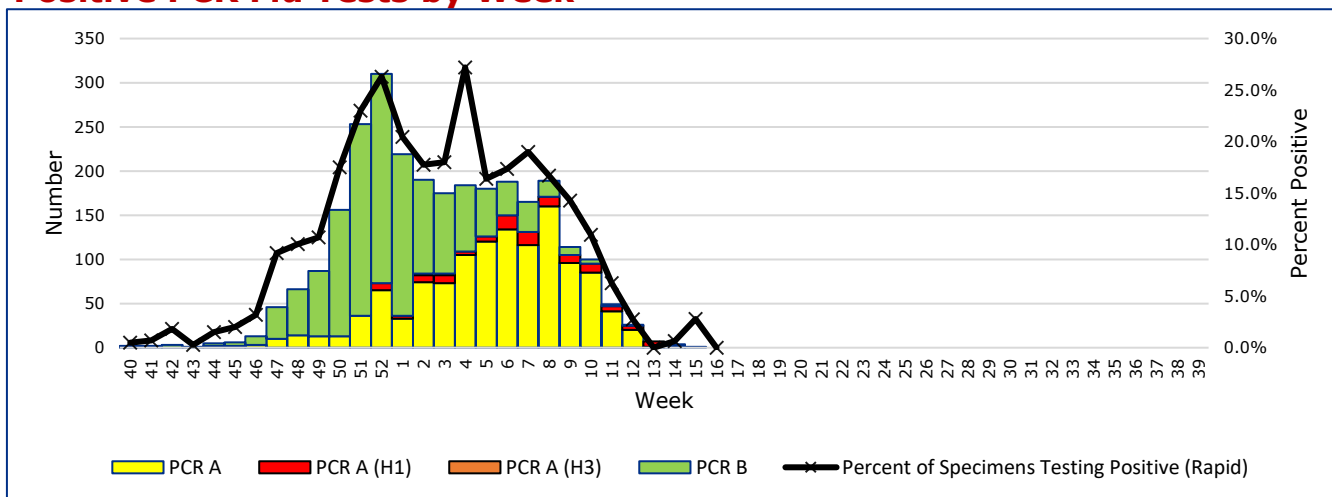
This chart documents the percentage of patient visits that were due to ILI at hospitals and clinics around the region. It compares our region's data with the state's data and also compares to last flu season. Only confirmed COVID-19 cases in PHR 9/10 are included on this graph.

## Positive Rapid Flu Tests by Week



This chart documents the number of rapid tests that have come back positive for flu A and flu B each week throughout the region.

## Positive PCR Flu Tests by Week



This chart documents the number of PCR tests that have come back positive for flu A and flu B each week throughout the region.

## Flu Data by County

County	Week 16				Week 15				Week 14			
	Patient Visits	% with ILI	Flu A	Flu B	Patient Visits	% with ILI	Flu A	Flu B	Patient Visits	% with ILI	Flu A	Flu B
Andrews	229	0%	0	0	229	0%	1	0	254	0%	0	1
Borden	2	0%	0	0	1	0%	0	0	0		0	0
Brewster	3	0%	0	0	6	0%	0	0	7	0%	0	0
Coke	16	0%	0	0	32	3%	0	0	41	7%	0	0
Concho	26	4%	0	0	59	5%	0	0	41	7%	0	0
Crane	2	0%	0	0	2	0%	0	0	5	20%	0	0
Crockett	9	0%	0	0	7	0%	0	0	7	0%	0	0
Culberson	8	0%	0	0	10	0%	0	0	6	0%	0	0
Dawson	88	0%	0	0	16	0%	0	0	23	9%	0	0
Ector	2972	6%	8	3	2691	8%	3	0	1978	14%	10	5
El Paso	4245	3%	0	0	4380	4%	0	0	5219	5%	1	2
Gaines	82	0%	0	0	98	6%	0	1	97	3%	0	0
Glasscock	2	0%	0	0	7	0%	0	0	0		0	0
Howard	461	4%	0	0	476	6%	0	0	518	8%	1	0
Hudspeth	11	0%	0	0	5	20%	0	0	13	0%	0	0
Irion	7	0%	0	0	4	0%	0	0	7	0%	0	0
Jeff Davis	1	0%	0	0	2	0%	0	0	1	0%	0	0
Kimble	130	0%	0	0	126	0%	0	0	3	0%	0	0
Loving	0		0	0	1	0%	0	0	0		0	0
McCulloch	316	6%	0	0	533	18%	0	0	361	13%	0	0
Martin	251	2%	0	0	272	1%	0	0	201	9%	1	0
Mason	14	0%	0	0	15	0%	0	0	20	0%	0	0
Menard	9	0%	0	0	13	0%	0	0	15	7%	0	0
Midland	732	6%	0	1	75	1%	0	0	781	8%	0	0
Pecos	566	0%	0	0	61	0%	0	0	573	0%	1	0
Presidio	6	0%	0	0	2	0%	0	0	5	0%	0	0
Reagan	12	0%	0	0	12	0%	0	0	12	17%	0	0
Reeves	25	0%	0	0	10	10%	0	0	4	0%	0	0
Schleicher	8	0%	0	0	4	0%	0	0	16	0%	0	0
Sterling	6	0%	0	0	8	0%	0	0	8	25%	0	0
Sutton	91	0%	0	0	66	2%	0	0	88	0%	0	0
Terrell	3	0%	0	0	1	0%	0	0	2	0%	0	0
Tom Green	1151	2%	1	1	1553	3%	0	1	1777	5%	4	3
Upton	79	14%	0	0	14	0%	0	0	48	17%	0	0
Ward	378	6%	4	0	311	6%	0	1	83	6%	0	0
Winkler	16	0%	0	0	14	14%	0	0	247	5%	0	0
<b>Total</b>	<b>11957</b>	<b>3.7%</b>	<b>13</b>	<b>5</b>	<b>11116</b>	<b>5.3%</b>	<b>4</b>	<b>3</b>	<b>12461</b>	<b>6.9%</b>	<b>18</b>	<b>11</b>

## Flu-Associated Pediatric Deaths & Outbreaks

No flu-associated pediatric deaths have been reported in PHR 9/10 this flu season. No new flu outbreaks were reported for Week 16.