

# Weekly Flu Surveillance Report

Public Health Region 9/10

Week 17: April 19-April 25



**TEXAS**  
Health and Human  
Services

Texas Department of State  
Health Services

## Disclaimer

Most cases of influenza are not reportable in the state of Texas, thus the data in this report was collected from hospitals, clinics, and schools throughout the region who have agreed to voluntarily submit data.

## Definitions

**ILI:** Influenza-Like Illness. This is an illness that resembles the flu, but has not been confirmed. **Rapid:** These tests are typically done in-house to quickly test for influenza. **PCR:** These tests are generally more precise than rapid tests and are performed at the DSHS state lab and many commercial labs to confirm a case of influenza.

## Geographic Spread of Influenza in the Region

No Activity	Sporadic	Local	Regional	Widespread
-------------	----------	-------	----------	------------

Geographic spread is determined using the CDC's guidelines for flu activity: <http://www.cdc.gov/flu/weekly/overview.htm>.

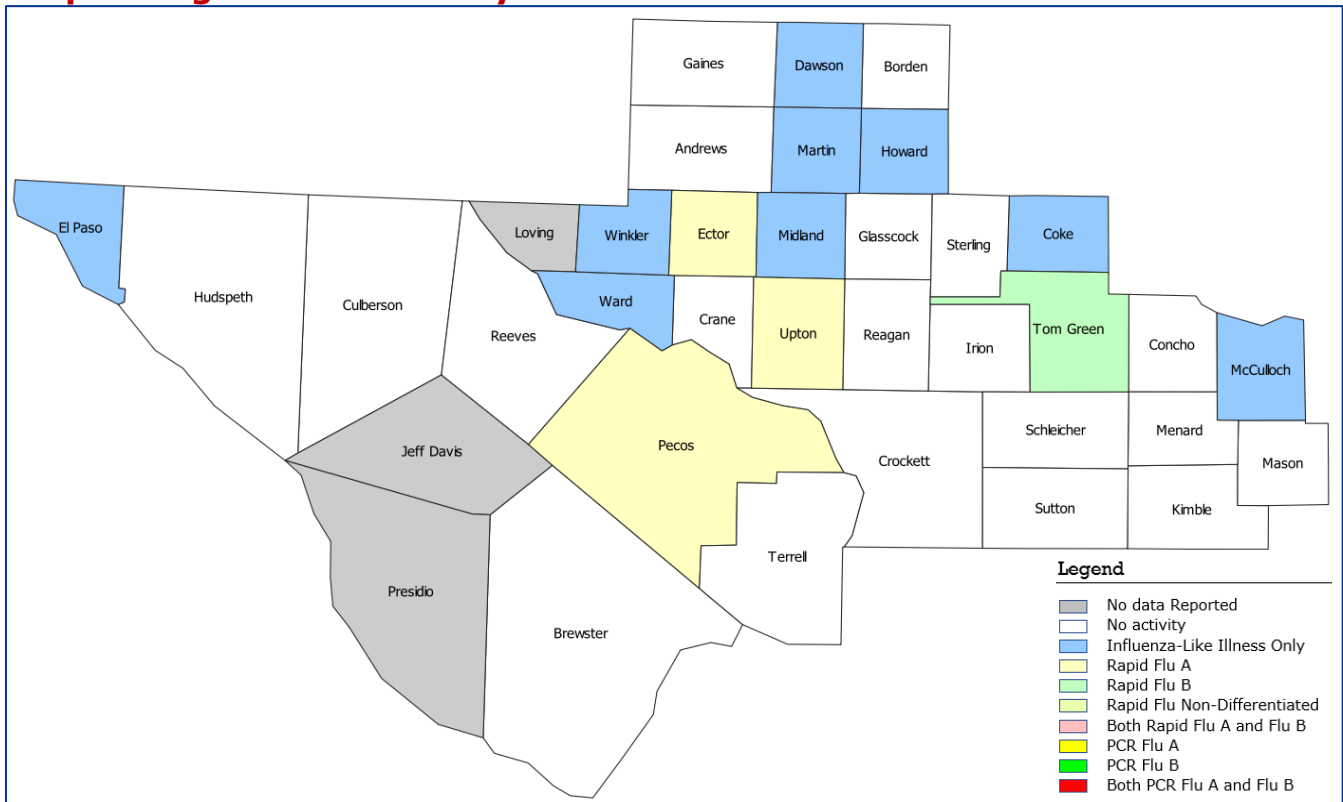
## Summary Data

Condition	Week 17	Week 16	Week 15
Number of Counties Reporting (36 total)	↓ 33	35	36
Number of Counties Reporting ILI	↓ 12	13	15
Number of Counties Reporting High Levels of ILI*	↓ 4	6	9
Number of Counties Reporting Flu A	→ 3	3	2
Number of Counties Reporting Flu B	↓ 1	2	3
Number of Counties Reporting Flu A & Flu B	↓ 0	2	0

The arrows represent changes from the previous week. A sideways arrow means there was no change in that condition.

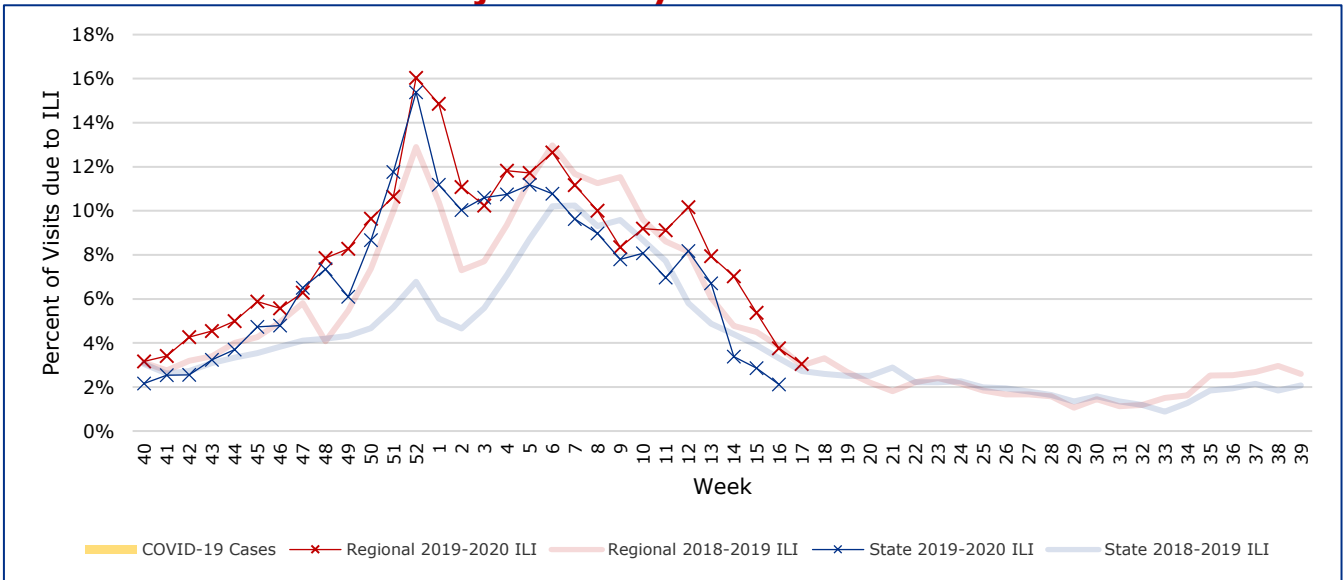
\*Counties with total percent of visits due to ILI above 4.0% for the week are considered to have high/abnormal levels.

## Map of Regional Flu Activity



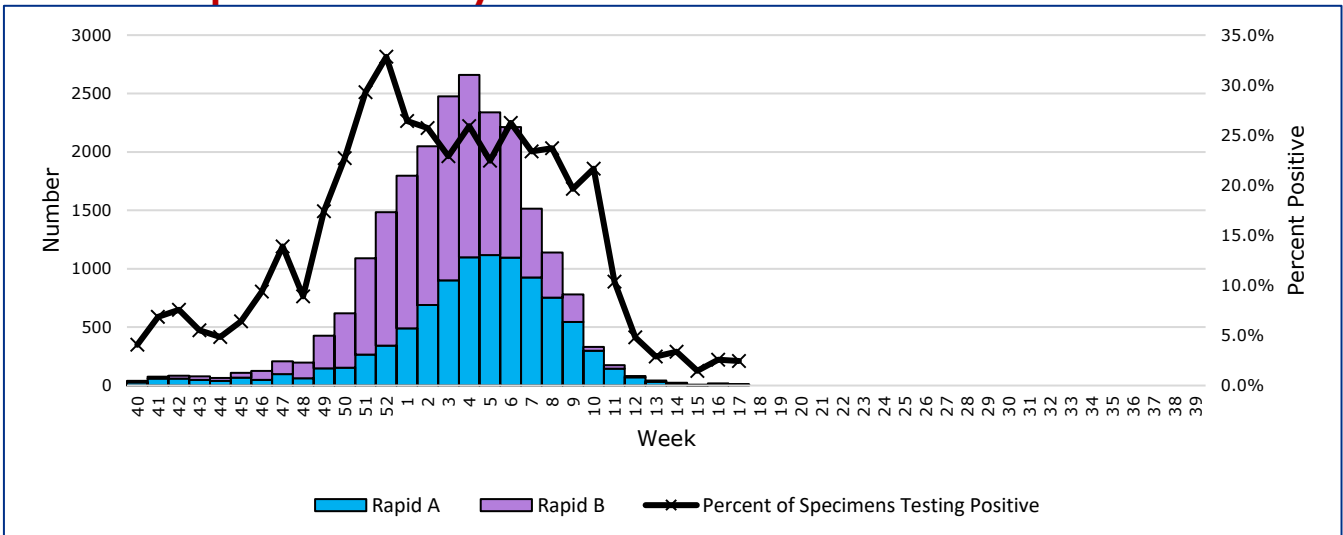
The map above depicts the previous week's reports of flu or influenza-like illness activity in each county. The legend on the bottom right of the map describes the meaning of each color.

## Influenza-Like Illness Projections by Week



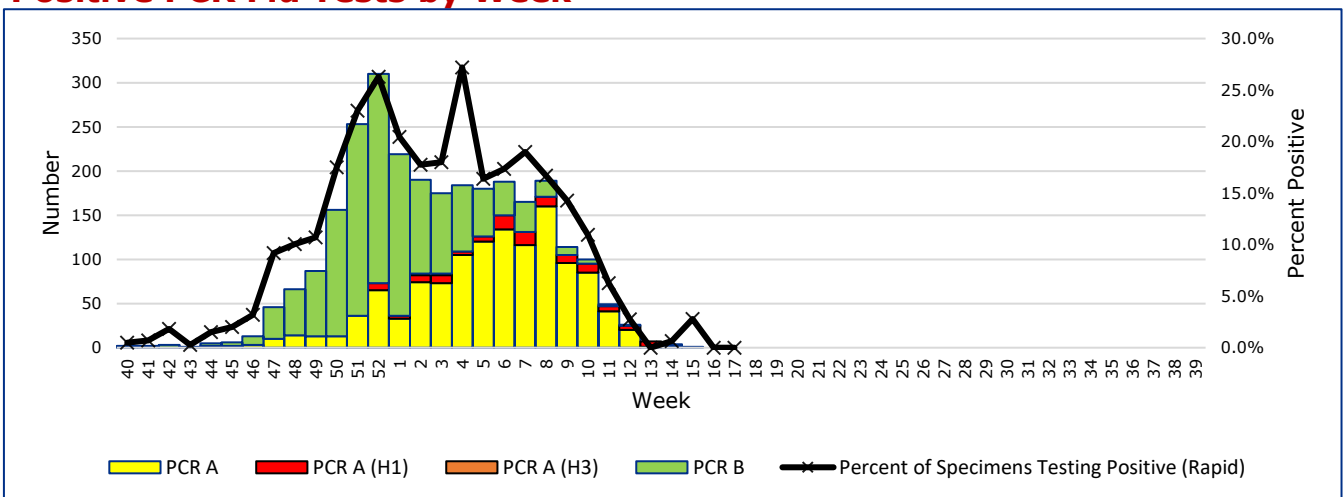
This chart documents the percentage of patient visits that were due to ILI at hospitals and clinics around the region. It compares our region's data with the state's data and also compares to last flu season. Only confirmed COVID-19 cases in PHR 9/10 are included on this graph.

## Positive Rapid Flu Tests by Week



This chart documents the number of rapid tests that have come back positive for flu A and flu B each week throughout the region.

## Positive PCR Flu Tests by Week



This chart documents the number of PCR tests that have come back positive for flu A and flu B each week throughout the region.

## Flu Data by County

County	Week 17				Week 16				Week 15			
	Patient Visits	% with ILI	Flu A	Flu B	Patient Visits	% with ILI	Flu A	Flu B	Patient Visits	% with ILI	Flu A	Flu B
Andrews	311	0%	0	0	229	0%	0	0	229	0%	1	0
Borden	3	0%	0	0	2	0%	0	0	1	0%	0	0
Brewster	5	0%	0	0	3	0%	0	0	6	0%	0	0
Coke	26	4%	0	0	16	0%	0	0	32	3%	0	0
Concho	28	0%	0	0	26	4%	0	0	59	5%	0	0
Crane	6	0%	0	0	2	0%	0	0	2	0%	0	0
Crockett	12	0%	0	0	9	0%	0	0	7	0%	0	0
Culberson	4	0%	0	0	8	0%	0	0	10	0%	0	0
Dawson	99	2%	0	0	88	0%	0	0	16	0%	0	0
Ector	3039	5%	5	0	2972	6%	8	3	2691	8%	3	0
El Paso	4797	2%	0	0	4245	3%	0	0	4380	4%	0	0
Gaines	20	0%	0	0	145	1%	0	0	98	6%	0	1
Glasscock	4	0%	0	0	2	0%	0	0	7	0%	0	0
Howard	381	3%	0	0	461	4%	0	0	476	6%	0	0
Hudspeth	11	0%	0	0	11	0%	0	0	5	20%	0	0
Irion	8	0%	0	0	7	0%	0	0	4	0%	0	0
Jeff Davis	0		0	0	1	0%	0	0	2	0%	0	0
Kimble	142	0%	0	0	130	0%	0	0	126	0%	0	0
Loving	0		0	0	0		0	0	1	0%	0	0
McCulloch	421	5%	0	0	316	6%	0	0	533	18%	0	0
Martin	265	1%	0	0	251	2%	0	0	272	0%	0	0
Mason	24	0%	0	0	14	0%	0	0	15	0%	0	0
Menard	9	0%	0	0	9	0%	0	0	13	0%	0	0
Midland	746	4%	0	0	732	6%	0	1	75	1%	0	0
Pecos	617	0%	1	0	566	0%	0	0	61	0%	0	0
Presidio	0		0	0	6	0%	0	0	2	0%	0	0
Reagan	26	0%	0	0	12	0%	0	0	12	0%	0	0
Reeves	9	0%	0	0	25	0%	0	0	10	10%	0	0
Schleicher	9	0%	0	0	8	0%	0	0	4	0%	0	0
Sterling	9	0%	0	0	6	0%	0	0	8	0%	0	0
Sutton	21	0%	0	0	174	0%	0	0	66	0%	0	0
Terrell	4	0%	0	0	3	0%	0	0	1	0%	0	0
Tom Green	1794	2%	0	1	1151	2%	1	1	1553	3%	0	1
Upton	80	9%	1	0	79	14%	0	0	14	0%	0	0
Ward	443	5%	0	0	378	6%	4	0	311	6%	0	1
Winkler	207	1%	0	0	199	2%	0	0	167	5%	0	0
<b>Total</b>	<b>13580</b>	<b>3.0%</b>	<b>7</b>	<b>1</b>	<b>12286</b>	<b>3.7%</b>	<b>13</b>	<b>5</b>	<b>11269</b>	<b>5.3%</b>	<b>4</b>	<b>3</b>

## Flu-Associated Pediatric Deaths & Outbreaks

No flu-associated pediatric deaths have been reported in PHR 9/10 this flu season. No new flu outbreaks were reported for Week 17.