

Weekly Flu Surveillance Report
Public Health Region 9/10
Week 44- October 25th-October 31st



Texas Department of State Health Services

Disclaimer

Most cases of influenza are not reportable in the state of Texas, thus the data in this report was collected from hospitals, clinics, and schools throughout the region who have agreed to voluntarily submit data.

Definitions

ILI: Influenza-Like Illness. This is an illness that resembles the flu, but has not been confirmed. **Rapid:** These tests are typically done in-house to quickly test for influenza. **PCR:** These tests are generally more precise than rapid tests and are performed at the DSHS state lab and many commercial labs to confirm a case of influenza.

Geographic Spread of Influenza in the Region

No Activity	Sporadic	Local	Regional	Widespread
-------------	----------	-------	----------	------------

Geographic spread is determined using the CDC's guidelines for flu activity: <http://www.cdc.gov/flu/weekly/overview.htm>.

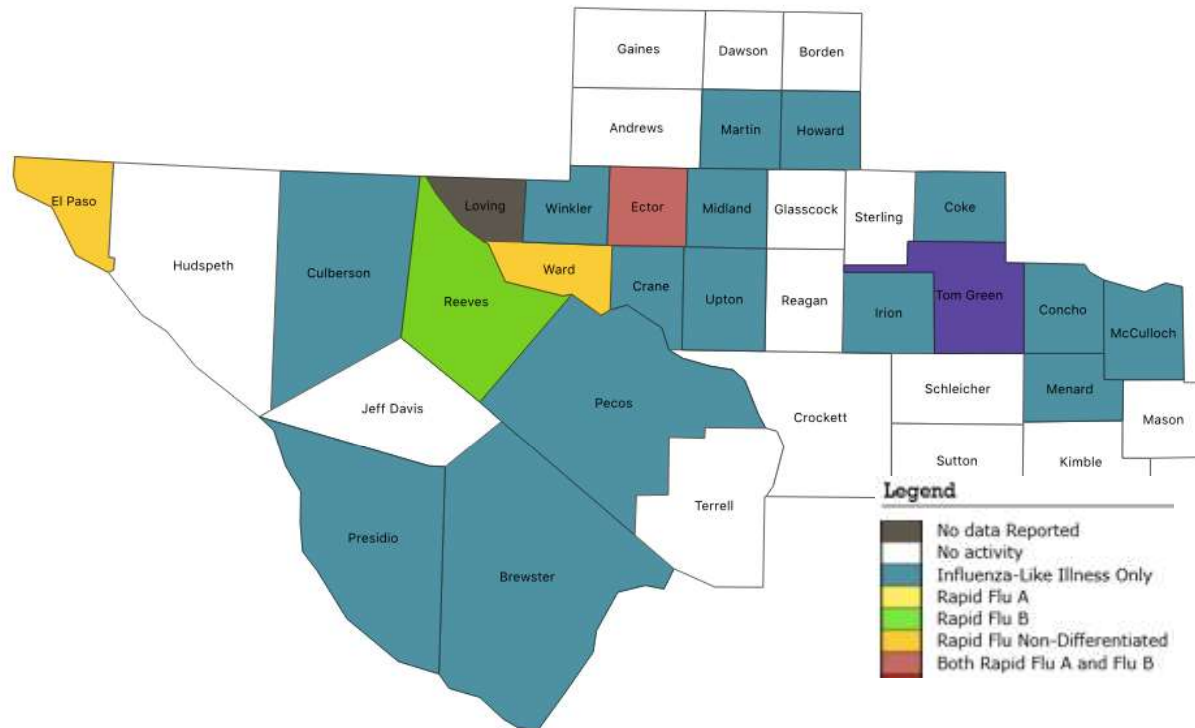
Summary Data

Condition	Week 44	Week 43	Week 42
Number of Counties Reporting (36 total)	↑ 35	34	35
Number of Counties Reporting ILI	↑ 18	13	13
Number of Counties Reporting High Levels of ILI*	↑ 5	3	2
Number of Counties Reporting Flu A	→ 3	3	4
Number of Counties Reporting Flu B	↑ 4	3	3
Number of Counties Reporting Flu A & Flu B	↑ 3	2	2

The arrows represent changes from the previous week. A sideways arrow means there was no change in that condition.

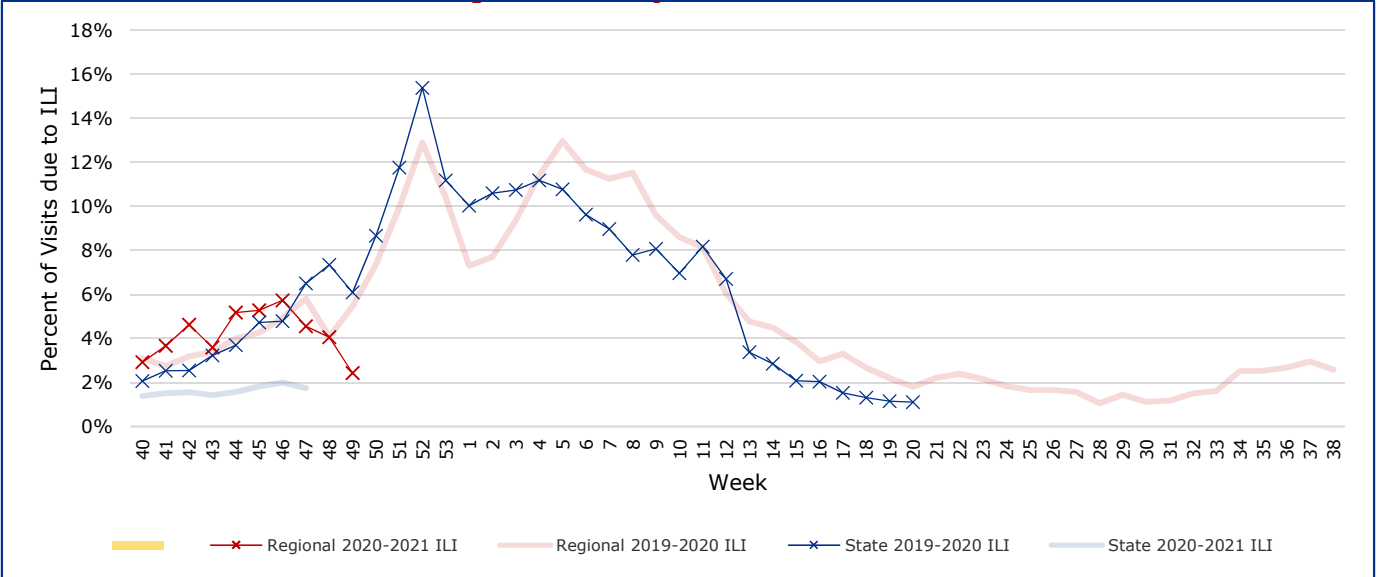
*Counties with total percent of visits due to ILI above 4.0% for the week are considered to have high/abnormal levels.

Map of Regional Flu Activity



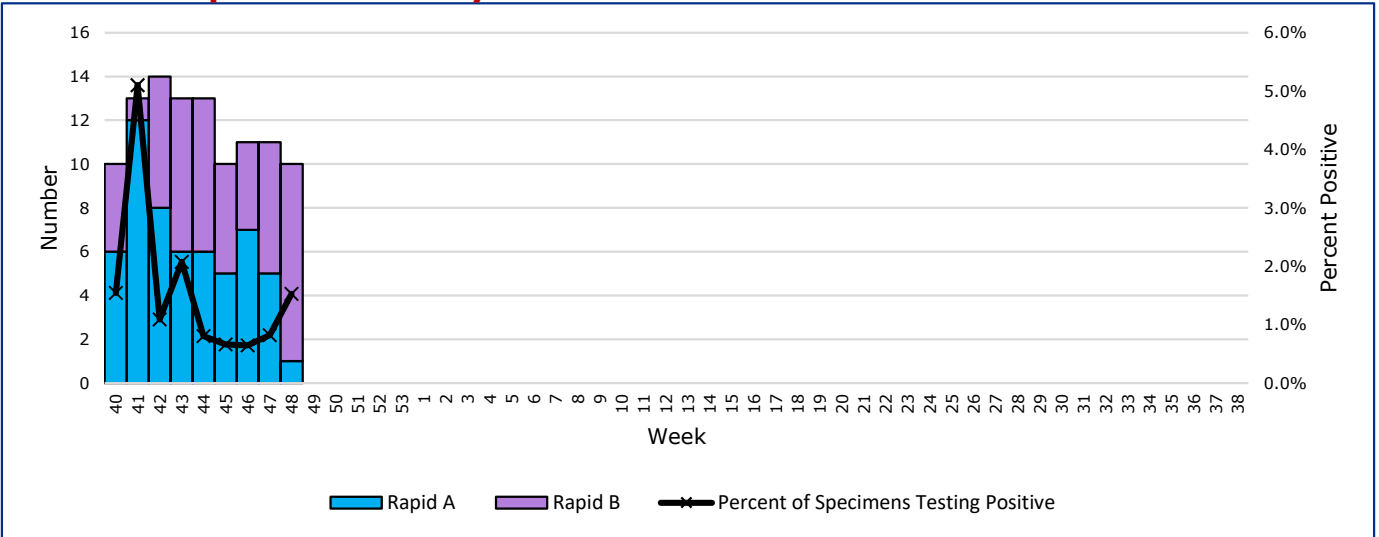
The map above depicts the previous week's reports of flu or influenza-like illness activity in each county. The legend on the bottom right of the map describes the meaning of each color.

Influenza-Like Illness Projections by Week



This chart documents the percentage of patient visits that were due to ILI at hospitals and clinics around the region. It compares our region's data with the state's data and also compares to last flu season. Only confirmed COVID-19 cases in PHR 9/10 are included on this graph.

Positive Rapid Flu Tests by Week



This chart documents the number of rapid tests that have come back positive for flu A and flu B each week throughout the region.

Flu Data by County

County	Week 44				Week 43				Week 42			
	Patient Visits	% with ILI	Flu A	Flu B	Patient Visits	% with ILI	Flu A	Flu B	Patient Visits	% with ILI	Flu A	Flu B
Andrews	411	0%	0	0	484	0%	0	0	537	0%	0	0
Borden	7	0%	0	0	2782		0	0	1	0%	0	0
Brewster	50	4%	0	0	2845	0%	0	0	78	0%	0	0
Coke	59	3%	0	0	2838	4%	0	0	39	3%	0	0
Concho	40	3%	0	0	2817	6%	0	0	46	4%	0	0
Crane	23	4%	0	0	2811	0%	0	0	12	0%	0	0
Crockett	10	0%	0	0	2799	0%	0	0	22	0%	0	0
Culberson	44	30%	0	0	2837	0%	2	0	55	65%	3	2
Dawson	169	0%	0	0	2913	2%	0	0	157	0%	0	0
Ector	3562	6%	3	1	6991	4%	1	3	4820	3%	2	0
El Paso	6723	3%	0	6	10618	3%	0	0	7465	3%	2	2
Gaines	33	0%	0	0	2807	0%	0	0	36	3%	0	0
Glasscock	5	0%	0	0	2788	0%	0	0	4	0%	0	0
Howard	348	2%	0	0	3098	2%	0	0	333	2%	0	0
Hudspeth	14	0%	0	0	2803	5%	0	0	25	0%	0	0
Irion	18	17%	0	0	2810	4%	0	0	26	0%	0	0
Jeff Davis	16	0%	0	0	2789	0%	0	0	13	0%	0	0
Kimble	240	0%	0	0	3081	0%	0	0	223	0%	0	0
Loving	0		0	0	2782		0	0	0		0	0
McCulloch	84	4%	0	0	2886	0%	0	0	90	0%	0	0
Martin	379	19%	0	0	2831	0%	0	0	415	0%	0	0
Mason	33	0%	0	0	2808	0%	0	0	14	0%	0	0
Menard	15	7%	0	0	2794	0%	0	0	20	0%	0	0
Midland	1949	9%	0	0	4943	6%	0	0	3396	5%	0	0
Pecos	147	3%	0	0	2946	4%	0	0	94	0%	0	0
Presidio	36	6%	0	0	2857	9%	0	0	43	188%	0	0
Reagan	25	0%	0	0	2815	0%	0	0	29	0%	0	0
Reeves	1674	10%	3	0	4153	5%	3	0	894	0%	1	0
Schleicher	17	0%	0	0	2824	0%	0	0	51	0%	0	0
Sterling	11	0%	0	0	2796	0%	0	0	18	0%	0	0
Sutton	25	0%	0	0	2831	0%	0	0	34	0%	0	0
Terrell	31	0%	0	0	2804	0%	0	0	14	0%	0	0
Tom Green	3125	3%	0	1	5472	3%	0	4	3502	2%	0	2
Upton	65	11%	0	0	2920	51%	0	0	121	43%	0	0
Ward	87	5%	0	1	3238	3%	0	1	1862	5%	0	0
Winkler	222	21%	0	0	2802	0%	0	0	780	6%	0	0
Total	19697	60502.1%	6	9	118413	3.7%	6	8	25269	4.8%	8	6

Flu-Associated Pediatric Deaths & Outbreaks

No flu-associated pediatric deaths have been reported in PHR 9/10 this flu season. No new flu outbreaks were reported for Week 44.