

# Weekly Flu Surveillance Report

## Public Health Region 9/10

### Week 45- November 1- November 7



Texas Department of State Health Services

### Disclaimer

Most cases of influenza are not reportable in the state of Texas, thus the data in this report was collected from hospitals, clinics, and schools throughout the region who have agreed to voluntarily submit data.

### Definitions

**ILI:** Influenza-Like Illness. This is an illness that resembles the flu, but has not been confirmed. **Rapid:** These tests are typically done in-house to quickly test for influenza. **PCR:** These tests are generally more precise than rapid tests and are performed at the DSHS state lab and many commercial labs to confirm a case of influenza.

### Geographic Spread of Influenza in the Region

No Activity	Sporadic	Local	Regional	Widespread
-------------	----------	-------	----------	------------

Geographic spread is determined using the CDC's guidelines for flu activity: <http://www.cdc.gov/flu/weekly/overview.htm>.

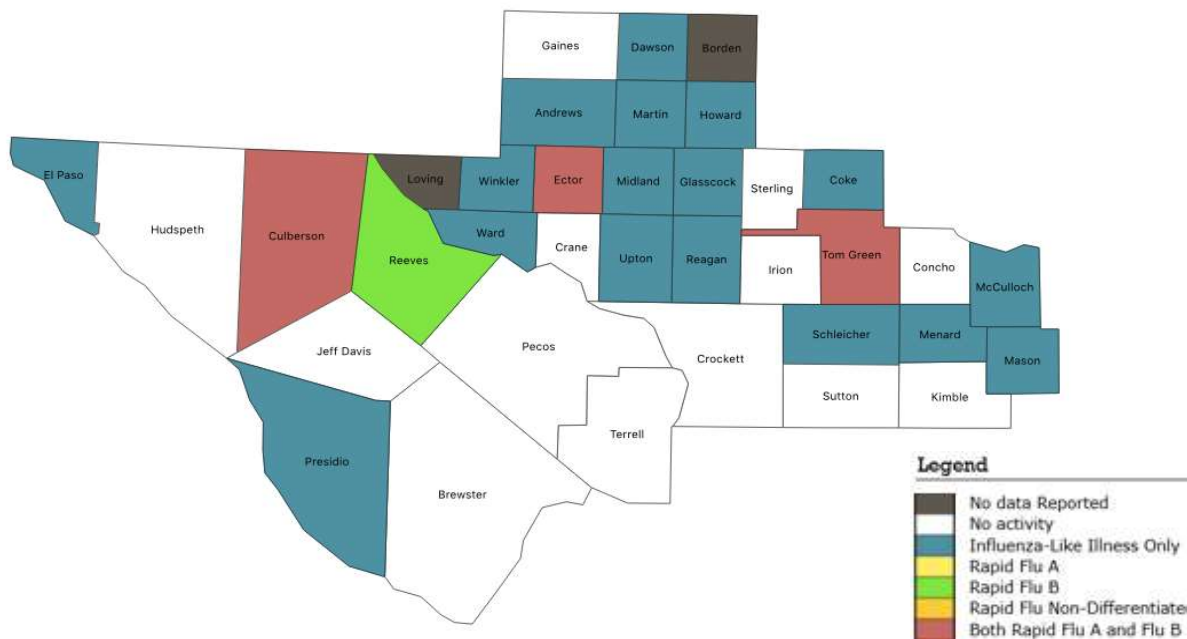
### Summary Data

Condition	Week 45	Week 44	Week 43
Number of Counties Reporting (36 total)	↓ 34	35	34
Number of Counties Reporting ILI	↓ 16	18	13
Number of Counties Reporting High Levels of ILI*	→ 5	5	3
Number of Counties Reporting Flu A	↑ 4	3	3
Number of Counties Reporting Flu B	↓ 3	4	3
Number of Counties Reporting Flu A & Flu B	→ 3	3	2

The arrows represent changes from the previous week. A sideways arrow means there was no change in that condition.

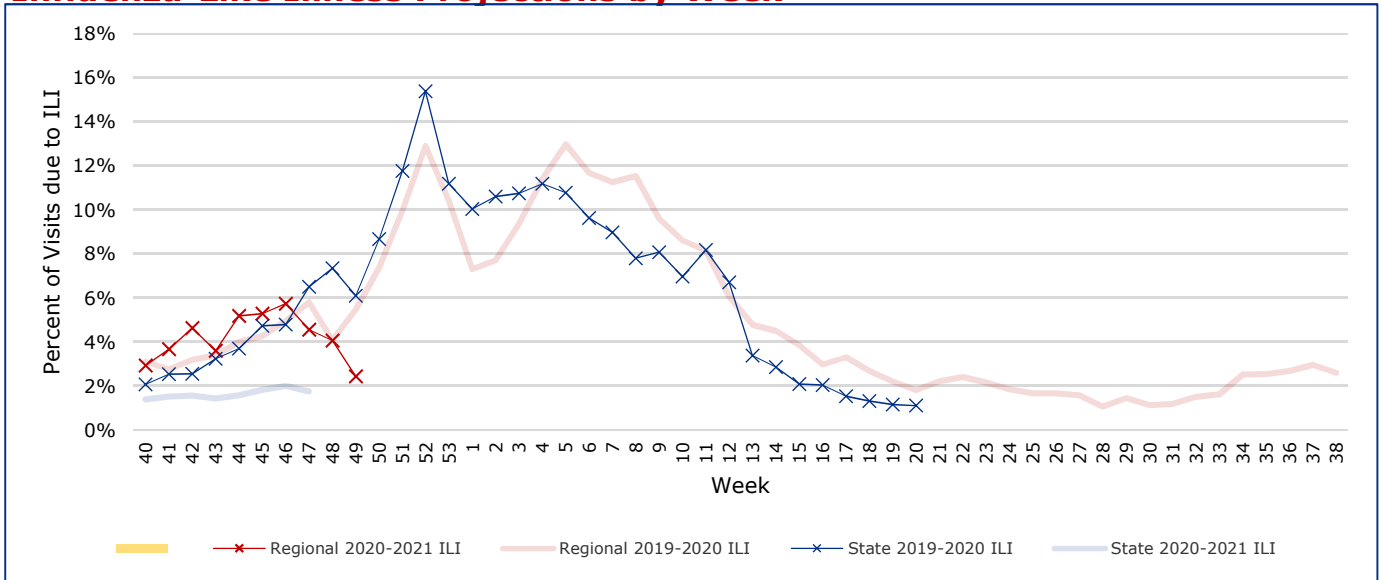
\*Counties with total percent of visits due to ILI above 4.0% for the week are considered to have high/abnormal levels.

### Map of Regional Flu Activity



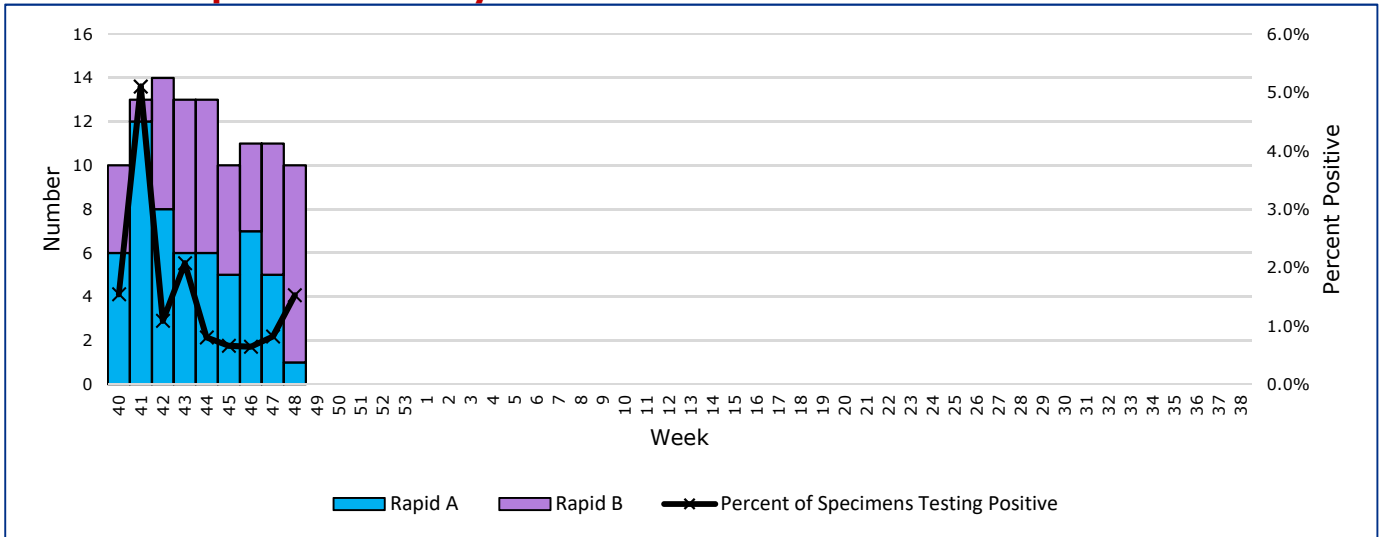
The map above depicts the previous week's reports of flu or influenza-like illness activity in each county. The legend on the bottom right of the map describes the meaning of each color.

## Influenza-Like Illness Projections by Week



This chart documents the percentage of patient visits that were due to ILI at hospitals and clinics around the region. It compares our region's data with the state's data and also compares to last flu season. Only confirmed COVID-19 cases in PHR 9/10 are included on this graph.

## Positive Rapid Flu Tests by Week



This chart documents the number of rapid tests that have come back positive for flu A and flu B each week throughout the region.

## Flu Data by County

County	Week 45				Week 44				Week 43			
	Patient Visits	% with ILI	Flu A	Flu B	Patient Visits	% with ILI	Flu A	Flu B	Patient Visits	% with ILI	Flu A	Flu B
Andrews	528	0%	0	0	411	0%	0	0	484	0%	0	0
Borden	0		0	0	7	0%	0	0	0		0	0
Brewster	7	0%	0	0	50	4%	0	0	63	0%	0	0
Coke	47	4%	0	0	59	3%	0	0	56	4%	0	0
Concho	48	0%	0	0	40	3%	0	0	35	6%	0	0
Crane	42	0%	0	0	23	4%	0	0	29	0%	0	0
Crockett	18	0%	0	0	10	0%	0	0	17	0%	0	0
Culberson	59	5%	1	1	44	30%	0	0	55	0%	2	0
Dawson	127	2%	0	0	169	0%	0	0	131	2%	0	0
Ector	5115	4%	1	1	3562	6%	3	1	4209	4%	1	3
El Paso	6328	2%	0	0	6723	3%	0	6	7836	3%	0	0
Gaines	19	0%	0	0	33	0%	0	0	25	0%	0	0
Glasscock	70	1%	0	0	5	0%	0	0	6	0%	0	0
Howard	396	5%	0	0	348	2%	0	0	316	2%	0	0
Hudspeth	8	0%	0	0	14	0%	0	0	21	5%	0	0
Irion	14	0%	0	0	18	17%	0	0	28	4%	0	0
Jeff Davis	1	0%	0	0	16	0%	0	0	7	0%	0	0
Kimble	336	0%	0	0	240	0%	0	0	299	0%	0	0
Loving	0		0	0	0		0	0	0		0	0
McCulloch	106	5%	0	0	84	4%	0	0	104	0%	0	0
Martin	563	19%	0	0	379	19%	0	0	49	0%	0	0
Mason	33	3%	0	0	33	0%	0	0	26	0%	0	0
Menard	20	5%	0	0	15	7%	0	0	12	0%	0	0
Midland	2170	15%	0	0	1949	9%	0	0	2161	6%	0	0
Pecos	88	0%	0	0	147	3%	0	0	164	4%	0	0
Presidio	22	5%	0	0	36	6%	0	0	75	0%	0	0
Reagan	42	5%	0	0	25	0%	0	0	33	0%	0	0
Reeves	430	7%	1	0	1674	10%	3	0	1371	4%	3	0
Schleicher	26	8%	0	0	17	0%	0	0	42	0%	0	0
Sterling	16	0%	0	0	11	0%	0	0	14	0%	0	0
Sutton	38	0%	0	0	25	0%	0	0	49	0%	0	0
Terrell	24	0%	0	0	31	0%	0	0	22	0%	0	0
Tom Green	3580	3%	2	3	3125	3%	0	1	2690	2%	0	4
Upton	78	8%	0	0	65	11%	0	0	138	51%	0	0
Ward	101	4%	0	0	87	5%	0	1	456	3%	0	1
Winkler	236	15%	0	0	222	21%	0	0	20	0%	0	0
<b>Total</b>	<b>20736</b>	<b>68801.9%</b>	<b>5</b>	<b>5</b>	<b>19697</b>	<b>5.1%</b>	<b>6</b>	<b>9</b>	<b>21043</b>	<b>3.7%</b>	<b>6</b>	<b>8</b>

## Flu-Associated Pediatric Deaths & Outbreaks

No flu-associated pediatric deaths have been reported in PHR 9/10 this flu season. No new flu outbreaks were reported for Week 45.