

**Weekly Flu Surveillance Report**  
**Public Health Region 9/10**  
**Week 46- November 8- November 14**



Texas Department of State Health Services

**Disclaimer**

Most cases of influenza are not reportable in the state of Texas, thus the data in this report was collected from hospitals, clinics, and schools throughout the region who have agreed to voluntarily submit data.

**Definitions**

**ILI:** Influenza-Like Illness. This is an illness that resembles the flu, but has not been confirmed. **Rapid:** These tests are typically done in-house to quickly test for influenza. **PCR:** These tests are generally more precise than rapid tests and are performed at the DSHS state lab and many commercial labs to confirm a case of influenza.

**Geographic Spread of Influenza in the Region**

No Activity	Sporadic	Local	Regional	Widespread
-------------	----------	-------	----------	------------

Geographic spread is determined using the CDC's guidelines for flu activity: <http://www.cdc.gov/flu/weekly/overview.htm>.

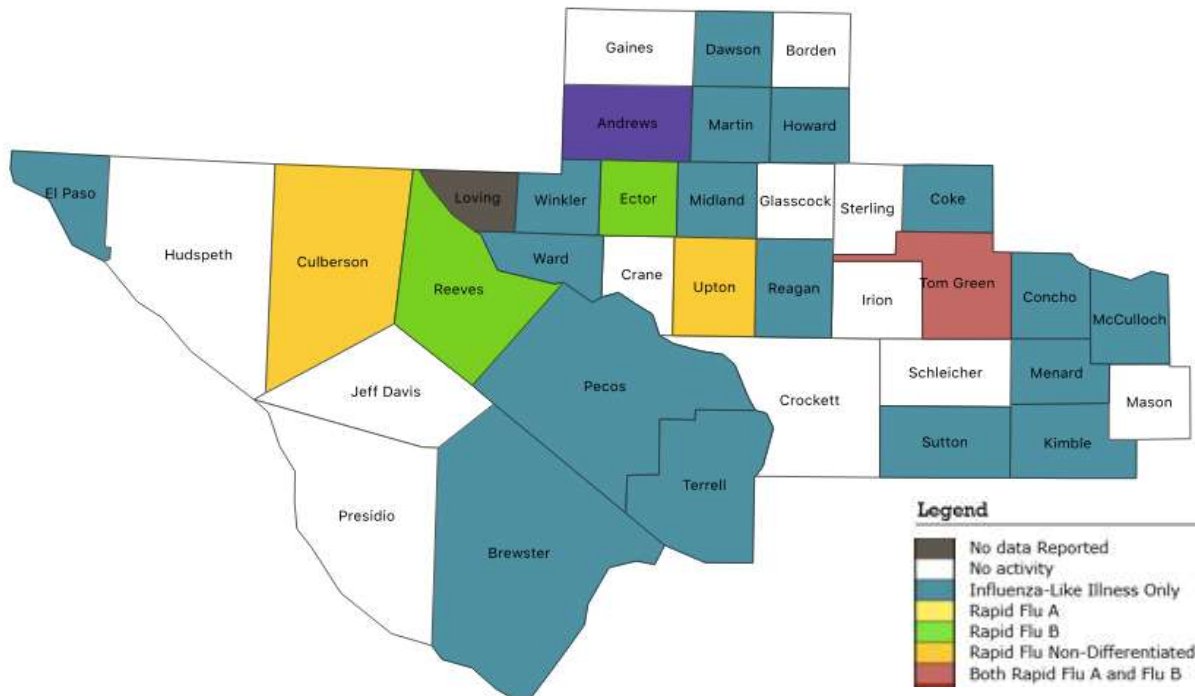
**Summary Data**

Condition	Week 46	Week 45	Week 44
Number of Counties Reporting (36 total)	↑ 35	34	35
Number of Counties Reporting ILI	↑ 20	16	18
Number of Counties Reporting High Levels of ILI*	↓ 4	5	5
Number of Counties Reporting Flu A	↓ 3	4	3
Number of Counties Reporting Flu B	↑ 5	3	4
Number of Counties Reporting Flu A & Flu B	↓ 1	3	3

The arrows represent changes from the previous week. A sideways arrow means there was no change in that condition.

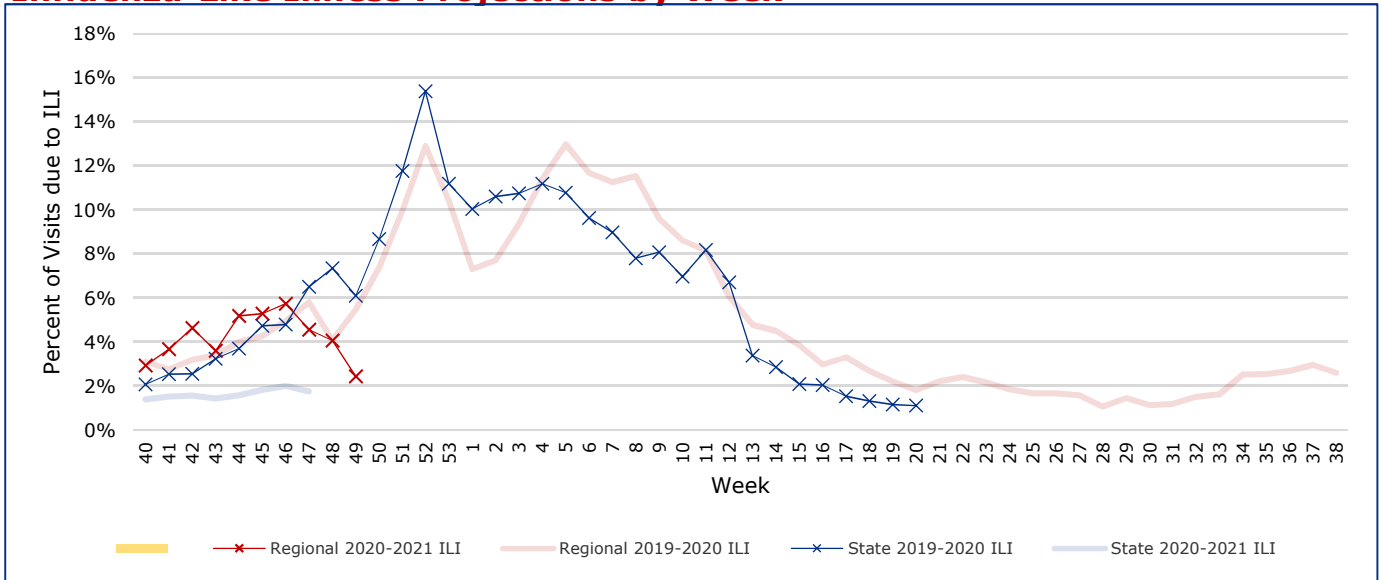
\*Counties with total percent of visits due to ILI above 4.0% for the week are considered to have high/abnormal levels.

**Map of Regional Flu Activity**



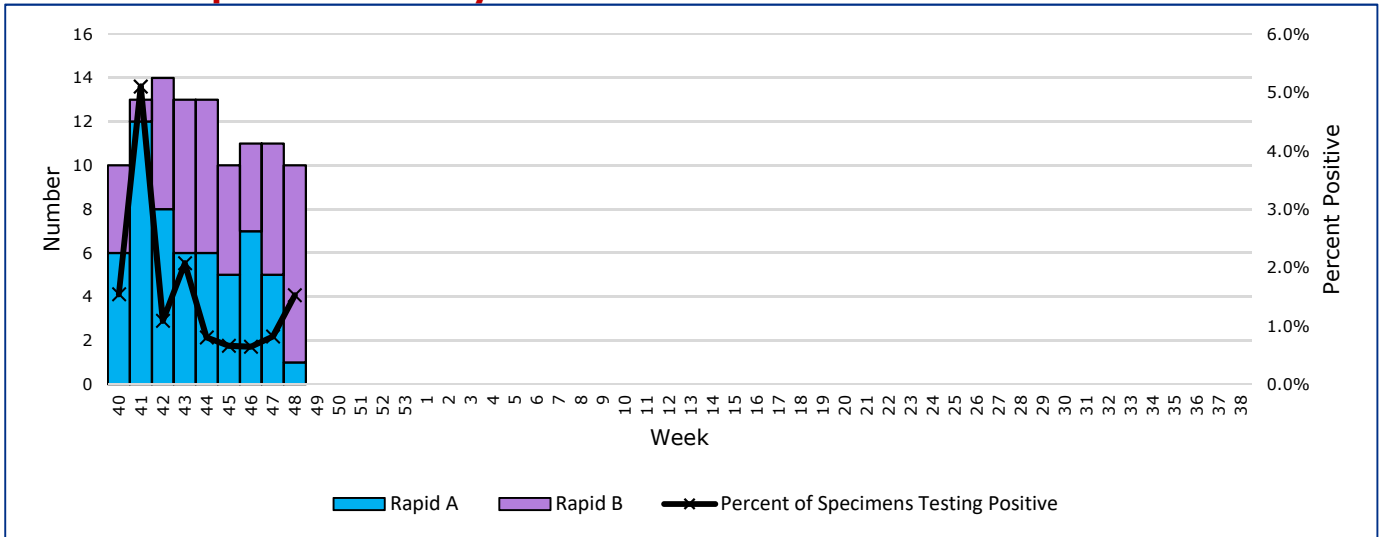
The map above depicts the previous week's reports of flu or influenza-like illness activity in each county. The legend on the bottom right of the map describes the meaning of each color.

## Influenza-Like Illness Projections by Week



This chart documents the percentage of patient visits that were due to ILI at hospitals and clinics around the region. It compares our region's data with the state's data and also compares to last flu season. Only confirmed COVID-19 cases in PHR 9/10 are included on this graph.

## Positive Rapid Flu Tests by Week



This chart documents the number of rapid tests that have come back positive for flu A and flu B each week throughout the region.

## Flu Data by County

County	Week 46				Week 45				Week 44			
	Patient Visits	% with ILI	Flu A	Flu B	Patient Visits	% with ILI	Flu A	Flu B	Patient Visits	% with ILI	Flu A	Flu B
Andrews	524	0%	0	1	528	0%	0	0	411	0%	0	0
Borden	1	0%	0	0	0		0	0	7	0%	0	0
Brewster	10	10%	0	0	7	0%	0	0	50	4%	0	0
Coke	71	8%	0	0	47	4%	0	0	59	3%	0	0
Concho	80	11%	0	0	48	0%	0	0	40	3%	0	0
Crane	22	0%	0	0	42	0%	0	0	23	4%	0	0
Crockett	17	0%	0	0	18	0%	0	0	10	0%	0	0
Culberson	44	11%	0	1	59	5%	1	1	44	30%	0	0
Dawson	138	1%	0	0	127	2%	0	0	169	0%	0	0
Ector	5139	4%	2	0	5115	4%	1	1	3562	5%	3	1
El Paso	6287	2%	0	0	6328	2%	0	0	6723	3%	0	6
Gaines	22	0%	0	0	19	0%	0	0	33	0%	0	0
Glasscock	8	0%	0	0	70	1%	0	0	5	0%	0	0
Howard	359	3%	0	0	396	5%	0	0	348	2%	0	0
Hudspeth	18	0%	0	0	8	0%	0	0	14	0%	0	0
Irion	19	0%	0	0	14	0%	0	0	18	17%	0	0
Jeff Davis	4	0%	0	0	1	0%	0	0	16	0%	0	0
Kimble	291	1%	0	0	336	0%	0	0	240	0%	0	0
Loving	0		0	0	0		0	0	0		0	0
McCulloch	99	1%	0	0	106	5%	0	0	84	4%	0	0
Martin	535	11%	0	0	563	19%	0	0	379	0%	0	0
Mason	37	0%	0	0	33	3%	0	0	33	0%	0	0
Menard	19	5%	0	0	20	5%	0	0	15	7%	0	0
Midland	2425	12%	0	0	2170	15%	0	0	1949	9%	0	0
Pecos	169	1%	0	0	88	0%	0	0	147	3%	0	0
Presidio	23	0%	0	0	22	5%	0	0	36	0%	0	0
Reagan	27	7%	0	0	42	5%	0	0	25	0%	0	0
Reeves	955	4%	4	0	430	7%	1	0	1674	8%	3	0
Schleicher	39	0%	0	0	26	8%	0	0	17	0%	0	0
Sterling	27	0%	0	0	16	0%	0	0	11	0%	0	0
Sutton	41	2%	0	0	38	0%	0	0	25	0%	0	0
Terrell	28	4%	0	0	24	0%	0	0	31	0%	0	0
Tom Green	4083	9%	1	2	3580	3%	2	3	3125	3%	0	1
Upton	93	32%	0	1	78	8%	0	0	65	2%	0	0
Ward	118	3%	0	0	101	4%	0	0	87	5%	0	1
Winkler	226	19%	0	0	236	15%	0	0	222	21%	0	0
<b>Total</b>	<b>21998</b>	<b>80102.0%</b>	<b>7</b>	<b>5</b>	<b>20736</b>	<b>5.2%</b>	<b>5</b>	<b>5</b>	<b>19697</b>	<b>5.1%</b>	<b>6</b>	<b>9</b>

## Flu-Associated Pediatric Deaths & Outbreaks

No flu-associated pediatric deaths have been reported in PHR 9/10 this flu season. No new flu outbreaks were reported for Week 46.