

Weekly Flu Surveillance Report
Public Health Region 9/10
Week 48- November 22- November 28



Texas Department of State Health Services

Disclaimer

Most cases of influenza are not reportable in the state of Texas, thus the data in this report was collected from hospitals, clinics, and schools throughout the region who have agreed to voluntarily submit data.

Definitions

ILI: Influenza-Like Illness. This is an illness that resembles the flu, but has not been confirmed. **Rapid:** These tests are typically done in-house to quickly test for influenza. **PCR:** These tests are generally more precise than rapid tests and are performed at the DSHS state lab and many commercial labs to confirm a case of influenza.

Geographic Spread of Influenza in the Region

No Activity	Sporadic	Local	Regional	Widespread
-------------	----------	-------	----------	------------

Geographic spread is determined using the CDC's guidelines for flu activity: <http://www.cdc.gov/flu/weekly/overview.htm>.

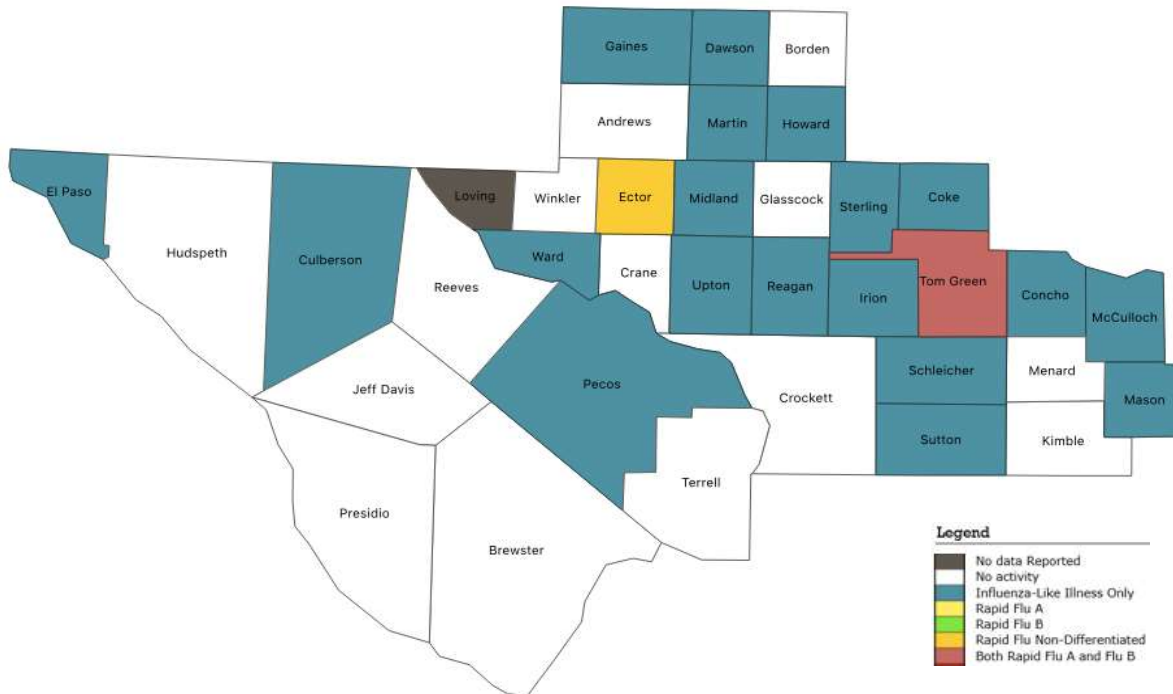
Summary Data

Condition	Week 48	Week 47	Week 46
Number of Counties Reporting (36 total)	→ 35	35	35
Number of Counties Reporting ILI	↑ 21	16	20
Number of Counties Reporting High Levels of ILI*	↑ 10	4	4
Number of Counties Reporting Flu A	↓ 1	3	3
Number of Counties Reporting Flu B	↓ 3	4	5
Number of Counties Reporting Flu A & Flu B	↓ 1	2	1

The arrows represent changes from the previous week. A sideways arrow means there was no change in that condition.

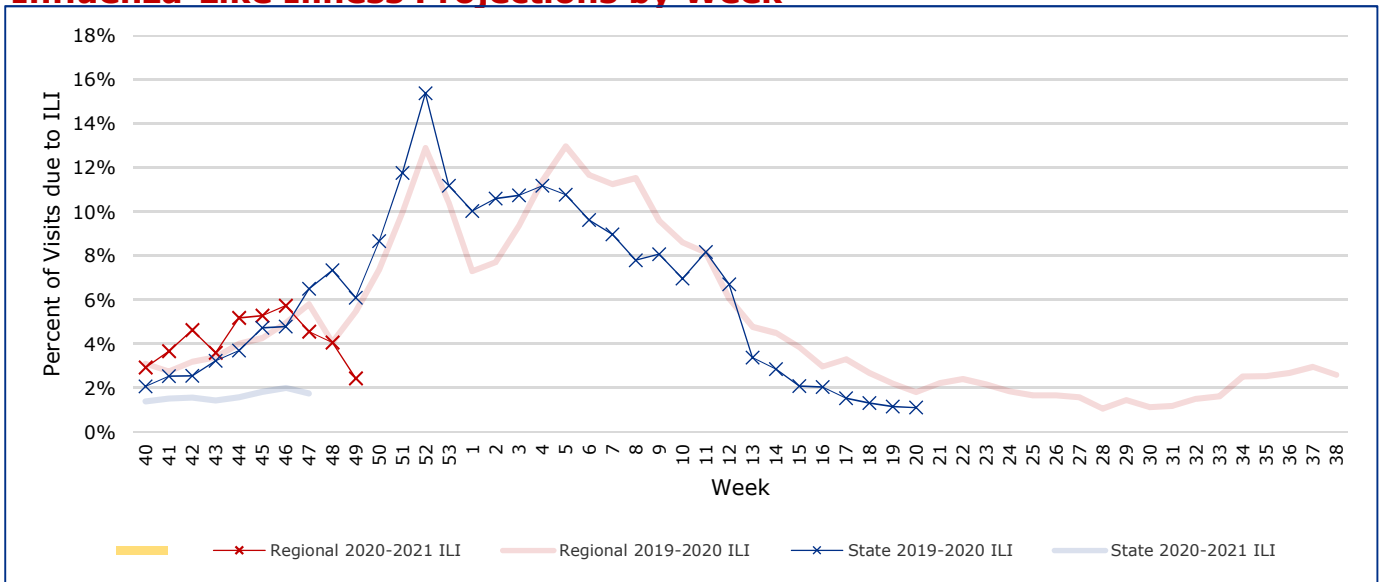
*Counties with total percent of visits due to ILI above 4.0% for the week are considered to have high/abnormal levels.

Map of Regional Flu Activity



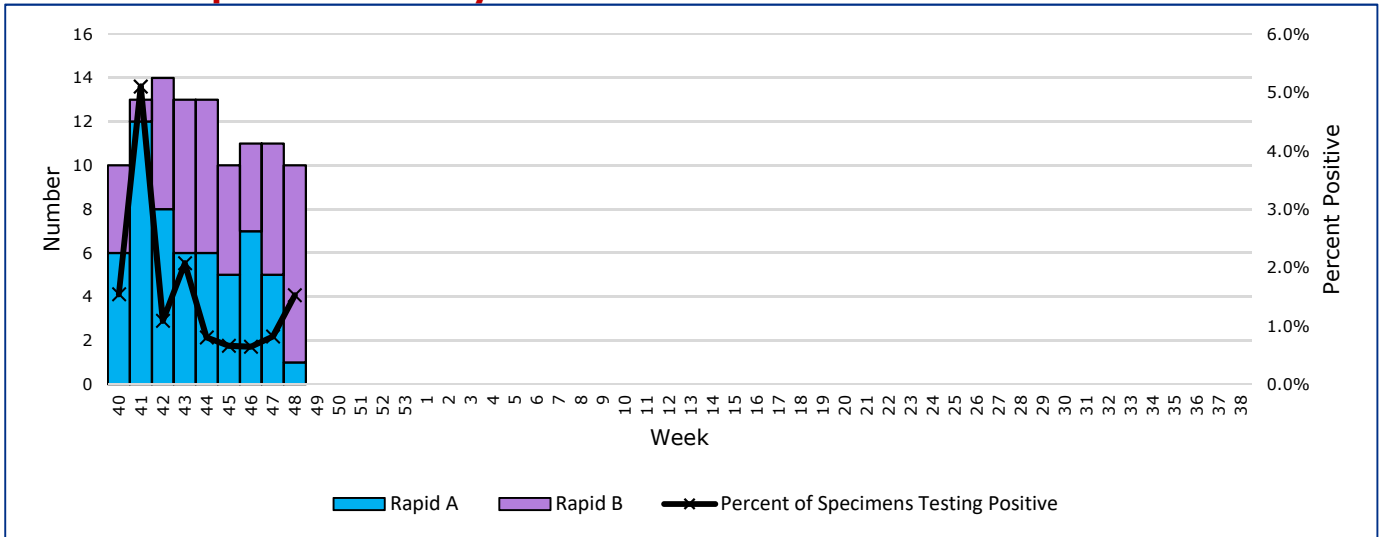
The map above depicts the previous week's reports of flu or influenza-like illness activity in each county. The legend on the bottom right of the map describes the meaning of each color.

Influenza-Like Illness Projections by Week



This chart documents the percentage of patient visits that were due to ILI at hospitals and clinics around the region. It compares our region's data with the state's data and also compares to last flu season. Only confirmed COVID-19 cases in PHR 9/10 are included on this graph.

Positive Rapid Flu Tests by Week



This chart documents the number of rapid tests that have come back positive for flu A and flu B each week throughout the region.

Flu Data by County

County	Week 48				Week 47				Week 46			
	Patient Visits	% with ILI	Flu A	Flu B	Patient Visits	% with ILI	Flu A	Flu B	Patient Visits	% with ILI	Flu A	Flu B
Andrews	33	0%	0	0	506	0%	0	0	524	0%	0	1
Borden	7	0%	0	0	2	0%	0	0	1	0%	0	0
Brewster	33	0%	0	0	27	0%	0	0	10	10%	0	0
Coke	43	2%	0	0	70	9%	0	0	71	8%	0	0
Concho	43	2%	0	0	48	0%	0	0	80	11%	0	0
Crane	25	0%	0	0	18	0%	0	0	22	0%	0	0
Crockett	20	0%	0	0	12	0%	0	0	17	0%	0	0
Culberson	42	26%	0	0	3	0%	0	0	44	11%	0	1
Dawson	122	1%	0	0	140	1%	0	0	138	1%	0	0
Ector	3494	5%	0	8	4987	5%	2	3	5139	4%	2	0
El Paso	4565	2%	0	0	5714	2%	1	2	6287	2%	0	0
Gaines	16	6%	0	0	30	0%	0	0	22	0%	0	0
Glasscock	4	0%	0	0	8	0%	0	0	8	0%	0	0
Howard	331	1%	0	0	366	4%	0	0	359	3%	0	0
Hudspeth	12	0%	0	0	8	0%	0	0	18	0%	0	0
Irion	10	10%	0	0	26	8%	0	0	19	0%	0	0
Jeff Davis	6	0%	0	0	5	0%	0	0	4	0%	0	0
Kimble	253	0%	0	0	185	0%	0	0	291	1%	0	0
Loving	0		0	0	0		0	0	0		0	0
McCulloch	76	1%	0	0	105	2%	0	0	99	1%	0	0
Martin	60	13%	0	0	56	11%	0	0	535	1%	0	0
Mason	28	4%	0	0	29	3%	0	0	37	0%	0	0
Menard	17	0%	0	0	16	0%	0	0	19	5%	0	0
Midland	1870	9%	0	0	2312	12%	0	1	2425	12%	0	0
Pecos	502	0%	0	0	858	0%	2	0	169	1%	0	0
Presidio	13	0%	0	0	16	0%	0	0	23	0%	0	0
Reagan	33	3%	0	0	36	0%	0	0	27	7%	0	0
Reeves	19	0%	0	0	15	0%	0	0	955	0%	4	0
Schleicher	20	5%	0	0	30	7%	0	0	39	0%	0	0
Sterling	17	6%	0	0	21	0%	0	0	27	0%	0	0
Sutton	31	3%	0	0	37	3%	0	0	41	2%	0	0
Terrell	5	0%	0	0	7	0%	0	0	28	4%	0	0
Tom Green	3272	4%	1	1	3640	3%	0	1	4083	9%	1	2
Upton	72	11%	0	0	88	14%	0	0	93	19%	0	1
Ward	91	3%	0	0	114	4%	0	0	118	3%	0	0
Winkler	18	0%	0	0	357	23%	0	0	226	19%	0	0
Total	15203	33701.8%	1	9	19892	4.4%	5	7	21998	5.6%	7	5

Flu-Associated Pediatric Deaths & Outbreaks

No flu-associated pediatric deaths have been reported in PHR 9/10 this flu season. No new flu outbreaks were reported for Week 48.