

Weekly Flu Surveillance Report
Public Health Region 9/10
Week 49- November 29- December 5



Texas Department of State Health Services

Disclaimer

Most cases of influenza are not reportable in the state of Texas, thus the data in this report was collected from hospitals, clinics, and schools throughout the region who have agreed to voluntarily submit data.

Definitions

ILI: Influenza-Like Illness. This is an illness that resembles the flu, but has not been confirmed. **Rapid:** These tests are typically done in-house to quickly test for influenza. **PCR:** These tests are generally more precise than rapid tests and are performed at the DSHS state lab and many commercial labs to confirm a case of influenza.

Geographic Spread of Influenza in the Region

No Activity	Sporadic	Local	Regional	Widespread
-------------	----------	-------	----------	------------

Geographic spread is determined using the CDC's guidelines for flu activity: <http://www.cdc.gov/flu/weekly/overview.htm>.

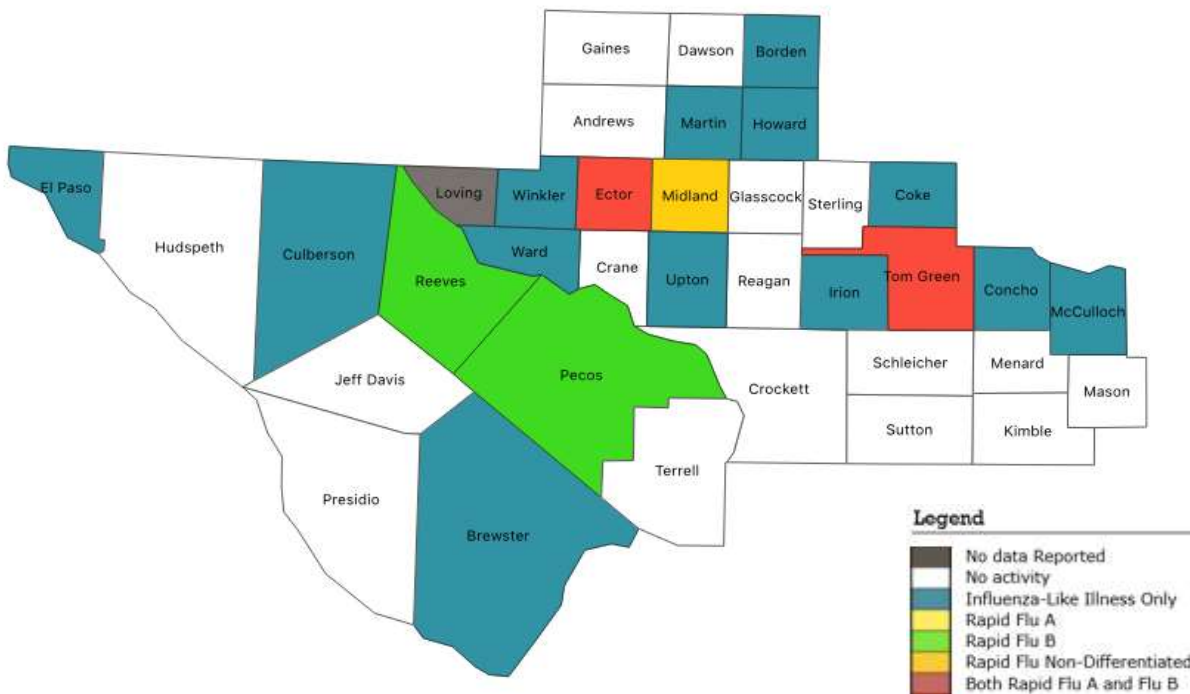
Summary Data

Condition	Week 49	Week 48	Week 47
Number of Counties Reporting (36 total)	→ 35	35	35
Number of Counties Reporting ILI	↓ 14	21	16
Number of Counties Reporting High Levels of ILI*	↓ 6	10	4
Number of Counties Reporting Flu A	↑ 4	1	3
Number of Counties Reporting Flu B	→ 3	3	4
Number of Counties Reporting Flu A & Flu B	↑ 2	1	2

The arrows represent changes from the previous week. A sideways arrow means there was no change in that condition.

*Counties with total percent of visits due to ILI above 4.0% for the week are considered to have high/abnormal levels.

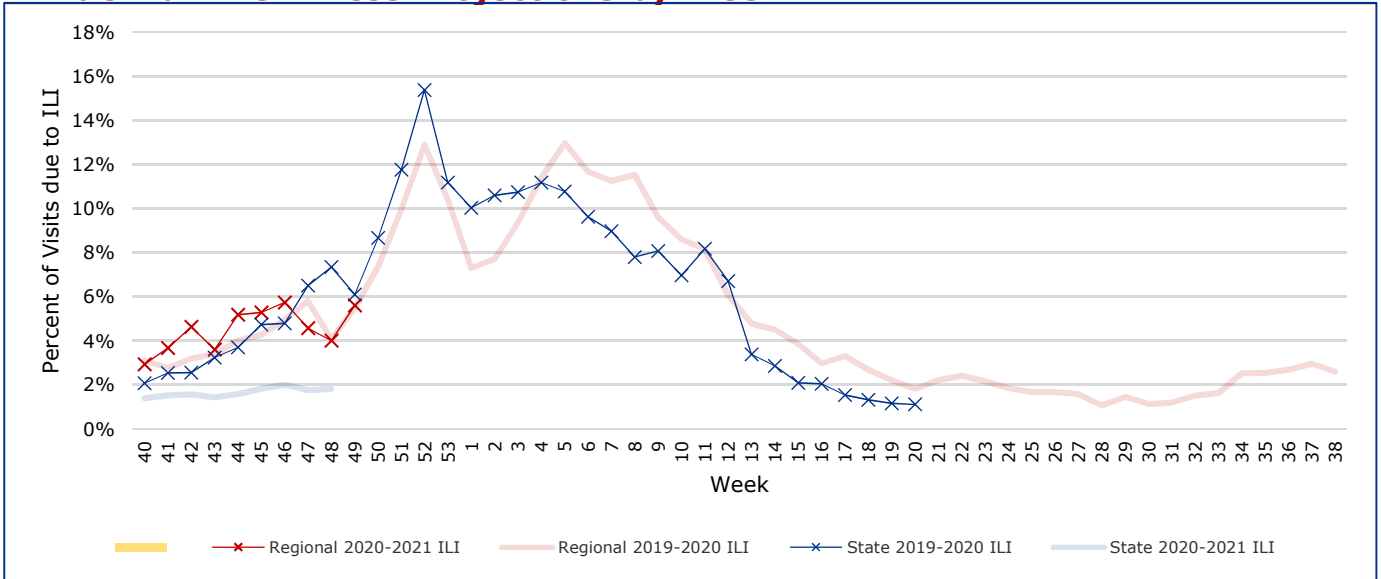
Map of Regional Flu Activity



The map above depicts the previous week's reports of flu or influenza-like illness activity in each county. The legend on the bottom

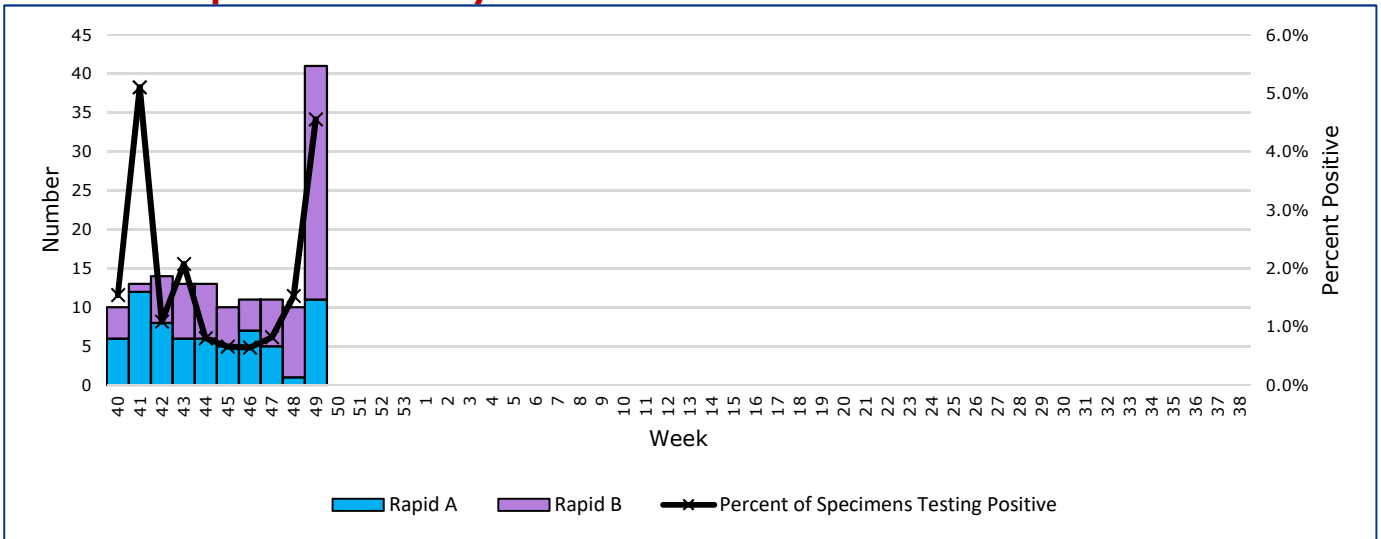
right of the map describes the meaning of each color.

Influenza-Like Illness Projections by Week



This chart documents the percentage of patient visits that were due to ILI at hospitals and clinics around the region. It compares our region's data with the state's data and also compares to last flu season. Only confirmed COVID-19 cases in PHR 9/10 are included on this graph.

Positive Rapid Flu Tests by Week



This chart documents the number of rapid tests that have come back positive for flu A and flu B each week throughout the region.

Flu Data by County

County	Week 49				Week 48				Week 47			
	Patient Visits	% with ILI	Flu A	Flu B	Patient Visits	% with ILI	Flu A	Flu B	Patient Visits	% with ILI	Flu A	Flu B
Andrews	446	0%	0	0	33	0%	0	0	506	0%	0	0
Borden	10	20%	0	0	348	0%	0	0	2	0%	0	0
Brewster	76	4%	0	0	374	0%	0	0	27	0%	0	0
Coke	66	8%	0	0	384	2%	0	0	70	9%	0	0
Concho	67	3%	0	0	384	2%	0	0	48	0%	0	0
Crane	40	0%	0	0	366	0%	0	0	18	0%	0	0
Crockett	28	0%	0	0	361	0%	0	0	12	0%	0	0
Culberson	51	55%	0	0	383	26%	0	0	3	0%	0	0
Dawson	151	0%	0	0	463	1%	0	0	140	1%	0	0
Ector	2559	14%	6	24	3835	5%	0	8	4987	5%	2	3
El Paso	6352	1%	0	0	4906	2%	0	0	5714	2%	1	2
Gaines	22	0%	0	0	357	6%	0	0	30	0%	0	0
Glasscock	11	0%	0	0	345	0%	0	0	8	0%	0	0
Howard	390	2%	0	0	672	1%	0	0	366	4%	0	0
Hudspeth	10	0%	0	0	353	0%	0	0	8	0%	0	0
Irion	28	14%	0	0	351	10%	0	0	26	8%	0	0
Jeff Davis	17	0%	0	0	347	0%	0	0	5	0%	0	0
Kimble	154	0%	0	0	594	0%	0	0	185	0%	0	0
Loving	0		0	0	341		0	0	0		0	0
McCulloch	135	4%	0	0	417	1%	0	0	105	2%	0	0
Martin	69	4%	0	0	401	13%	0	0	56	11%	0	0
Mason	49	0%	0	0	369	4%	0	0	29	3%	0	0
Menard	28	0%	0	0	358	0%	0	0	16	0%	0	0
Midland	2518	7%	0	1	2211	9%	0	0	2312	12%	0	1
Pecos	742	0%	1	0	843	0%	0	0	858	0%	2	0
Presidio	54	0%	0	0	354	0%	0	0	16	0%	0	0
Reagan	27	0%	0	0	374	3%	0	0	36	0%	0	0
Reeves	2161	5%	1	0	360	0%	0	0	15	0%	0	0
Schleicher	28	0%	0	0	361	5%	0	0	30	7%	0	0
Sterling	22	0%	0	0	358	6%	0	0	21	0%	0	0
Sutton	67	0%	0	0	372	3%	0	0	37	3%	0	0
Terrell	10	0%	0	0	346	0%	0	0	7	0%	0	0
Tom Green	4078	7%	3	5	3613	4%	1	1	3640	3%	0	1
Upton	82	9%	0	0	413	11%	0	0	88	14%	0	0
Ward	133	2%	0	0	432	3%	0	0	114	4%	0	0
Winkler	350	25%	0	0	359	0%	0	0	357	23%	0	0
Total	21031	84701.5%	11	30	27138	4.0%	1	9	19892	4.4%	5	7

Flu-Associated Pediatric Deaths & Outbreaks

No flu-associated pediatric deaths have been reported in PHR 9/10 this flu season. No new flu outbreaks were