

Weekly Flu Surveillance Report
 Public Health Region 9/10
 Week 50- December 6th- December 12th



Texas Department of State Health Services

Disclaimer

Most cases of influenza are not reportable in the state of Texas, thus the data in this report was collected from hospitals, clinics, and schools throughout the region who have agreed to voluntarily submit data.

Definitions

ILI: Influenza-Like Illness. This is an illness that resembles the flu, but has not been confirmed. **Rapid:** These tests are typically done in-house to quickly test for influenza. **PCR:** These tests are generally more precise than rapid tests and are performed at the DSHS state lab and many commercial labs to confirm a case of influenza.

Geographic Spread of Influenza in the Region

No Activity	Sporadic	Local	Regional	Widespread
-------------	----------	-------	----------	------------

Geographic spread is determined using the CDC's guidelines for flu activity: <http://www.cdc.gov/flu/weekly/overview.htm>.

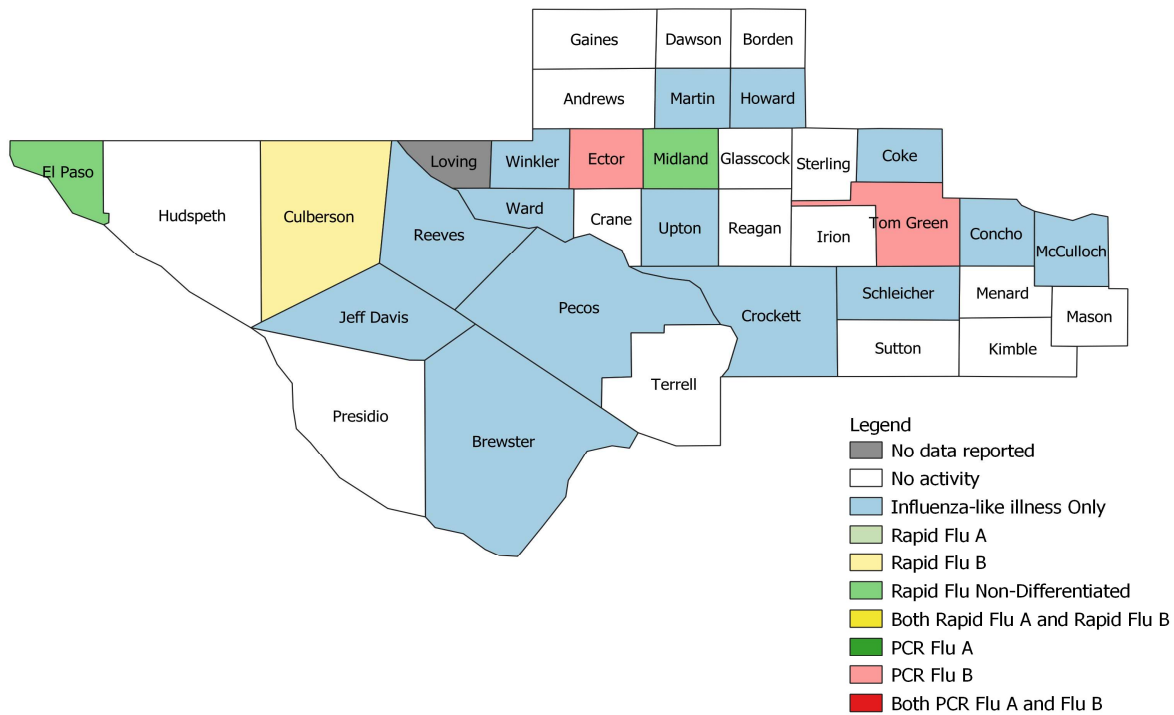
Summary Data

Condition	Week 50	Week 49	Week 48
Number of Counties Reporting (36 total)	→ 35	35	35
Number of Counties Reporting ILI	↑ 15	14	21
Number of Counties Reporting High Levels of ILI*	↓ 5	6	10
Number of Counties Reporting Flu A	↓ 3	4	1
Number of Counties Reporting Flu B	↑ 4	3	3
Number of Counties Reporting Flu A & Flu B	→ 2	2	1

The arrows represent changes from the previous week. A sideways arrow means there was no change in that condition.

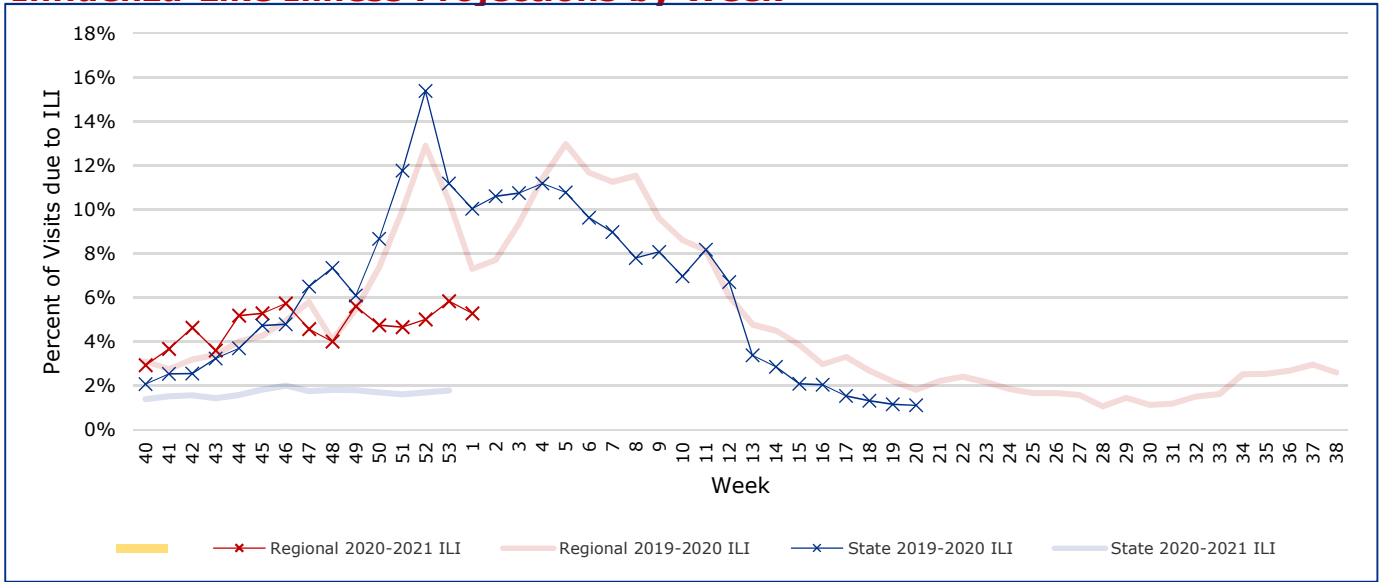
*Counties with total percent of visits due to ILI above 4.0% for the week are considered to have high/abnormal levels.

Map of Regional Flu Activity



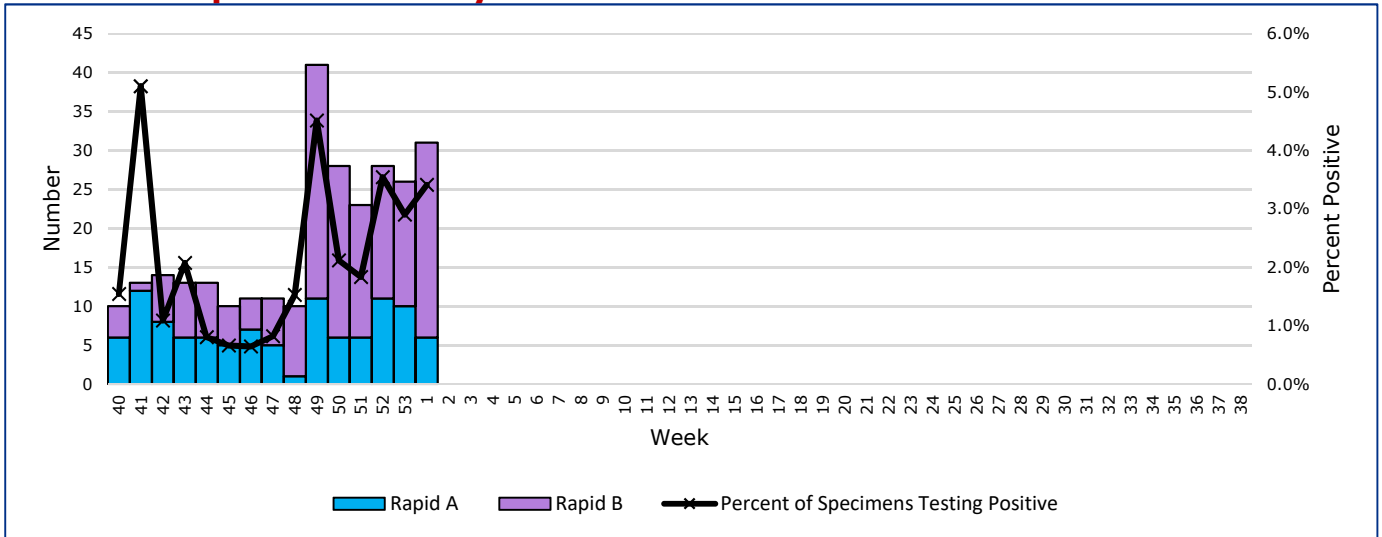
The map above depicts the previous week's reports of flu or influenza-like illness activity in each county. The legend on the bottom right of the map describes the meaning of each color.

Influenza-Like Illness Projections by Week



This chart documents the percentage of patient visits that were due to ILI at hospitals and clinics around the region. It compares our region's data with the state's data and also compares to last flu season. Only confirmed COVID-19 cases in PHR 9/10 are included on this graph.

Positive Rapid Flu Tests by Week



This chart documents the number of rapid tests that have come back positive for flu A and flu B each week throughout the region.

Flu Data by County

County	Week 50				Week 49				Week 48			
	Patient Visits	% with ILI	Flu A	Flu B	Patient Visits	% with ILI	Flu A	Flu B	Patient Visits	% with ILI	Flu A	Flu B
Andrews	492	0%	0	0	446	0%	0	0	33	0%	0	0
Borden	1	0%	0	0	1806	20%	0	0	7	0%	0	0
Brewster	56	2%	0	0	1872	4%	0	0	33	0%	0	0
Coke	44	5%	0	0	1862	8%	0	0	43	2%	0	0
Concho	37	5%	0	0	1863	3%	0	0	43	2%	0	0
Crane	29	0%	0	0	1836	0%	0	0	25	0%	0	0
Crockett	20	5%	0	0	1824	0%	0	0	20	0%	0	0
Culberson	37	30%	1	0	1847	55%	0	0	42	26%	0	0
Dawson	139	0%	0	0	1947	0%	0	0	122	1%	0	0
Ector	4002	9%	3	18	4355	14%	6	24	3494	5%	0	8
El Paso	5269	2%	0	1	8148	1%	0	0	4565	2%	0	0
Gaines	31	0%	0	0	1818	0%	0	0	16	6%	0	0
Glasscock	6	0%	0	0	1807	0%	0	0	4	0%	0	0
Howard	321	1%	0	0	2186	2%	0	0	331	1%	0	0
Hudspeth	17	0%	0	0	1806	0%	0	0	12	0%	0	0
Irion	40	0%	0	0	1824	14%	0	0	10	10%	0	0
Jeff Davis	10	10%	0	0	1813	0%	0	0	6	0%	0	0
Kimble	158	0%	0	0	1950	0%	0	0	253	0%	0	0
Loving	0		0	0	1796		0	0	0		0	0
McCulloch	92	1%	0	0	1931	4%	0	0	76	1%	0	0
Martin	465	7%	0	0	1865	4%	0	0	60	13%	0	0
Mason	38	0%	0	0	1845	0%	0	0	28	4%	0	0
Menard	22	0%	0	0	1824	0%	0	0	17	0%	0	0
Midland	2213	6%	0	1	4314	7%	0	1	1870	9%	0	0
Pecos	757	1%	0	0	2538	0%	1	0	502	0%	0	0
Presidio	36	0%	0	0	1850	0%	0	0	13	0%	0	0
Reagan	38	0%	0	0	1823	0%	0	0	33	3%	0	0
Reeves	366	4%	0	0	3957	5%	1	0	19	0%	0	0
Schleicher	31	6%	0	0	1824	0%	0	0	20	5%	0	0
Sterling	24	0%	0	0	1818	0%	0	0	17	6%	0	0
Sutton	29	0%	0	0	1863	0%	0	0	31	3%	0	0
Terrell	7	0%	0	0	1806	0%	0	0	5	0%	0	0
Tom Green	3244	3%	2	2	5874	7%	3	5	3272	4%	1	1
Upton	80	14%	0	0	1878	9%	0	0	72	11%	0	0
Ward	201	6%	0	0	1929	2%	0	0	91	3%	0	0
Winkler	421	17%	0	0	2146	25%	0	0	18	0%	0	0
Total	18773	6.2901.3%	6	22	83891	5.6%	11	30	15203	4.0%	1	9

Flu-Associated Pediatric Deaths & Outbreaks

No flu-associated pediatric deaths have been reported in PHR 9/10 this flu season. No new flu outbreaks were reported for Week 50.