

**Weekly Flu Surveillance Report**  
**Public Health Region 9/10**  
**Week 51- December 13th-December 19th**



Texas Department of State Health Services

**Disclaimer**

Most cases of influenza are not reportable in the state of Texas, thus the data in this report was collected from hospitals, clinics, and schools throughout the region who have agreed to voluntarily submit data.

**Definitions**

**ILI:** Influenza-Like Illness. This is an illness that resembles the flu, but has not been confirmed. **Rapid:** These tests are typically done in-house to quickly test for influenza. **PCR:** These tests are generally more precise than rapid tests and are performed at the DSHS state lab and many commercial labs to confirm a case of influenza.

**Geographic Spread of Influenza in the Region**

No Activity	Sporadic	Local	Regional	Widespread
-------------	----------	-------	----------	------------

Geographic spread is determined using the CDC's guidelines for flu activity: <http://www.cdc.gov/flu/weekly/overview.htm>.

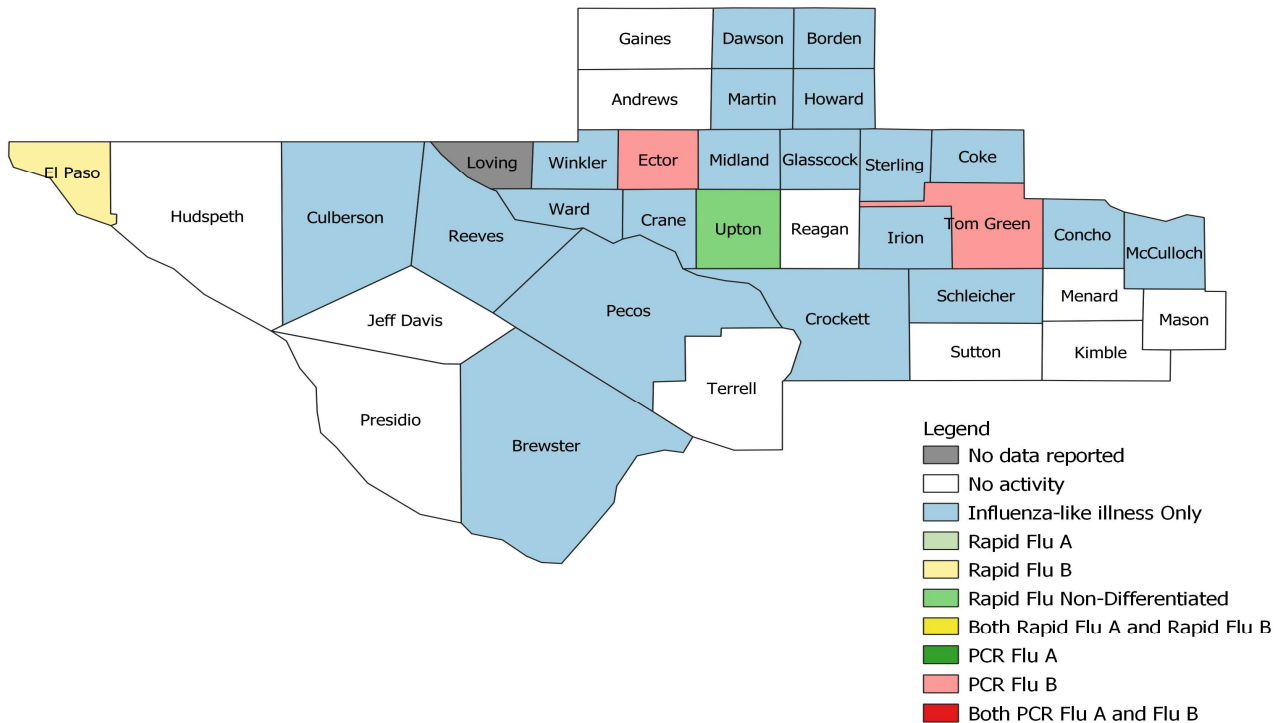
**Summary Data**

Condition	Week 51	Week 50	Week 49
Number of Counties Reporting (36 total)	→ 35	35	35
Number of Counties Reporting ILI	↑ 18	15	14
Number of Counties Reporting High Levels of ILI*	↑ 6	5	6
Number of Counties Reporting Flu A	→ 3	3	4
Number of Counties Reporting Flu B	↓ 3	4	3
Number of Counties Reporting Flu A & Flu B	→ 2	2	2

The arrows represent changes from the previous week. A sideways arrow means there was no change in that condition.

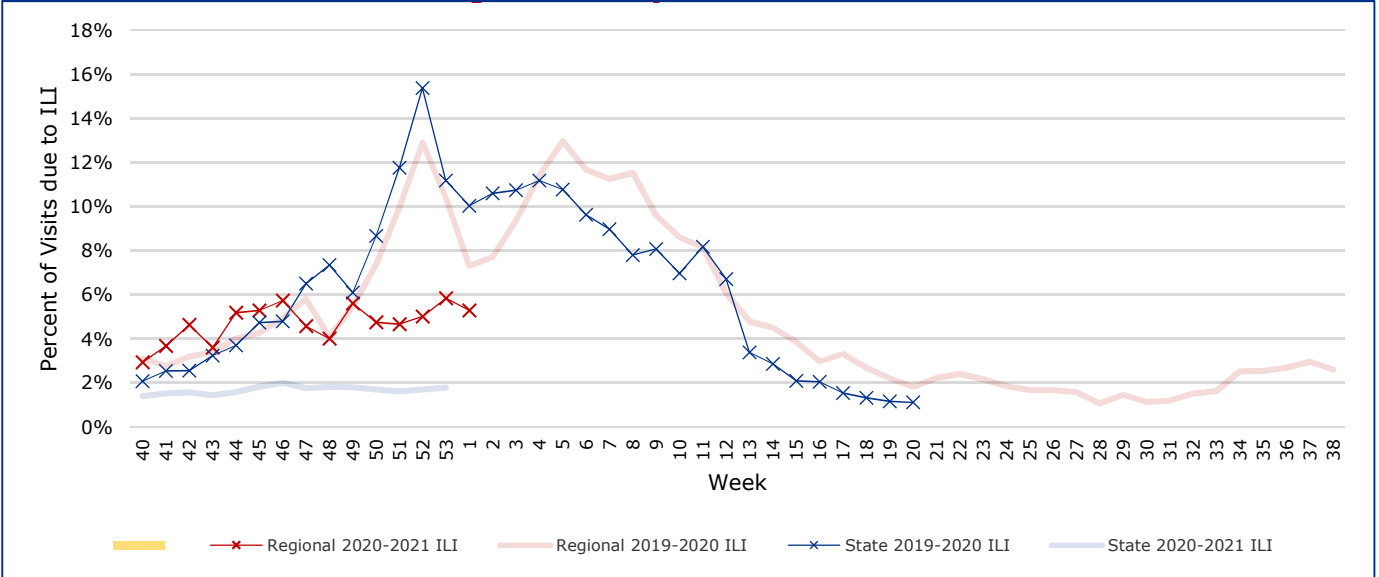
\*Counties with total percent of visits due to ILI above 4.0% for the week are considered to have high/abnormal levels.

**Map of Regional Flu Activity**



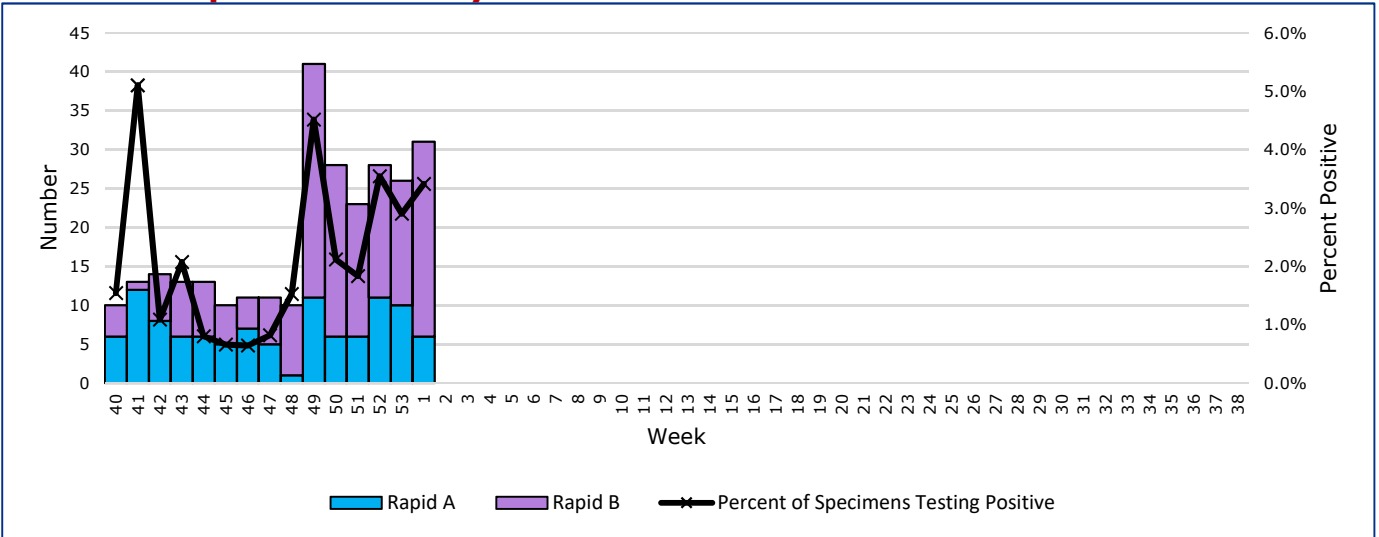
The map above depicts the previous week's reports of flu or influenza-like illness activity in each county. The legend on the bottom right of the map describes the meaning of each color.

## Influenza-Like Illness Projections by Week



This chart documents the percentage of patient visits that were due to ILI at hospitals and clinics around the region. It compares our region's data with the state's data and also compares to last flu season. Only confirmed COVID-19 cases in PHR 9/10 are included on this graph.

## Positive Rapid Flu Tests by Week



This chart documents the number of rapid tests that have come back positive for flu A and flu B each week throughout the region.

## Flu Data by County

County	Week 51				Week 50				Week 49			
	Patient Visits	% with ILI	Flu A	Flu B	Patient Visits	% with ILI	Flu A	Flu B	Patient Visits	% with ILI	Flu A	Flu B
Andrews	396	0%	0	0	492	0%	0	0	446	0%	0	0
Borden	2	50%	0	0	1	0%	0	0	10	20%	0	0
Brewster	63	2%	0	0	56	2%	0	0	76	4%	0	0
Coke	32	6%	0	0	44	5%	0	0	66	8%	0	0
Concho	43	7%	0	0	37	5%	0	0	67	3%	0	0
Crane	139	1%	0	0	29	0%	0	0	40	0%	0	0
Crockett	26	4%	0	0	20	5%	0	0	28	0%	0	0
Culberson	45	36%	0	0	37	30%	1	0	51	55%	0	0
Dawson	117	2%	0	0	139	0%	0	0	151	0%	0	0
Ector	3658	8%	4	14	4002	9%	3	18	2559	14%	6	24
El Paso	5090	1%	1	0	5269	2%	0	1	6352	1%	0	0
Gaines	80	0%	0	0	31	0%	0	0	22	0%	0	0
Glasscock	7	14%	0	0	6	0%	0	0	11	0%	0	0
Howard	279	0%	0	0	321	1%	0	0	390	2%	0	0
Hudspeth	16	0%	0	0	17	0%	0	0	10	0%	0	0
Irion	22	18%	0	0	40	0%	0	0	28	14%	0	0
Jeff Davis	14	0%	0	0	10	10%	0	0	17	0%	0	0
Kimble	152	0%	0	0	158	0%	0	0	154	0%	0	0
Loving	0		0	0	0		0	0	0		0	0
McCulloch	101	1%	0	0	92	1%	0	0	135	4%	0	0
Martin	399	12%	0	0	465	7%	0	0	69	4%	0	0
Mason	53	0%	0	0	38	0%	0	0	49	0%	0	0
Menard	19	0%	0	0	22	0%	0	0	28	0%	0	0
Midland	2163	7%	0	0	2213	6%	0	1	2518	7%	0	1
Pecos	1402	1%	0	0	757	1%	0	0	742	0%	1	0
Presidio	25	0%	0	0	36	0%	0	0	54	0%	0	0
Reagan	38	0%	0	0	38	0%	0	0	27	0%	0	0
Reeves	384	2%	0	0	366	4%	0	0	2161	5%	1	0
Schleicher	36	3%	0	0	31	6%	0	0	28	0%	0	0
Sterling	15	7%	0	0	24	0%	0	0	22	0%	0	0
Sutton	41	0%	0	0	29	0%	0	0	67	0%	0	0
Terrell	6	0%	0	0	7	0%	0	0	10	0%	0	0
Tom Green	3116	3%	1	2	3244	3%	2	2	4078	7%	3	5
Upton	75	17%	0	1	80	14%	0	0	82	9%	0	0
Ward	194	4%	0	0	201	6%	0	0	133	2%	0	0
Winkler	232	43%	0	0	421	17%	0	0	350	25%	0	0
<b>Total</b>	<b>18480</b>	<b>62401.2%</b>	<b>6</b>	<b>17</b>	<b>18773</b>	<b>4.7%</b>	<b>6</b>	<b>22</b>	<b>21031</b>	<b>5.6%</b>	<b>11</b>	<b>30</b>

### Flu-Associated Pediatric Deaths & Outbreaks

No flu-associated pediatric deaths have been reported in PHR 9/10 this flu season. No new flu outbreaks were reported for Week 51.