

Weekly Flu Surveillance Report
Public Health Region 9/10
Week 52- December 20-December 26



Texas Department of State Health Services

Disclaimer

Most cases of influenza are not reportable in the state of Texas, thus the data in this report was collected from hospitals, clinics, and schools throughout the region who have agreed to voluntarily submit data.

Definitions

ILI: Influenza-Like Illness. This is an illness that resembles the flu, but has not been confirmed. **Rapid:** These tests are typically done in-house to quickly test for influenza. **PCR:** These tests are generally more precise than rapid tests and are performed at the DSHS state lab and many commercial labs to confirm a case of influenza.

Geographic Spread of Influenza in the Region

No Activity	Sporadic	Local	Regional	Widespread
-------------	----------	-------	----------	------------

Geographic spread is determined using the CDC's guidelines for flu activity: <http://www.cdc.gov/flu/weekly/overview.htm>.

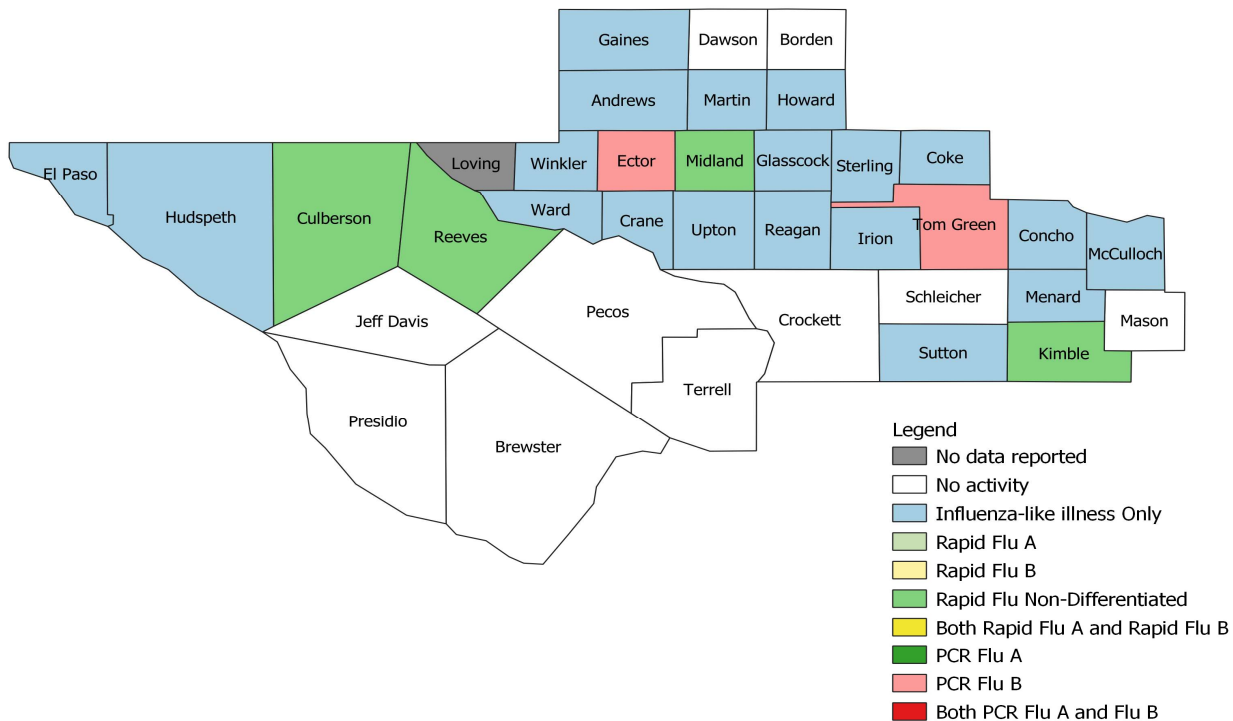
Summary Data

Condition	Week 52	Week 51	Week 50
Number of Counties Reporting (36 total)	→ 35	35	35
Number of Counties Reporting ILI	↑ 21	18	15
Number of Counties Reporting High Levels of ILI*	↑ 7	6	5
Number of Counties Reporting Flu A	↓ 2	3	3
Number of Counties Reporting Flu B	↑ 6	3	4
Number of Counties Reporting Flu A & Flu B	→ 2	2	2

The arrows represent changes from the previous week. A sideways arrow means there was no change in that condition.

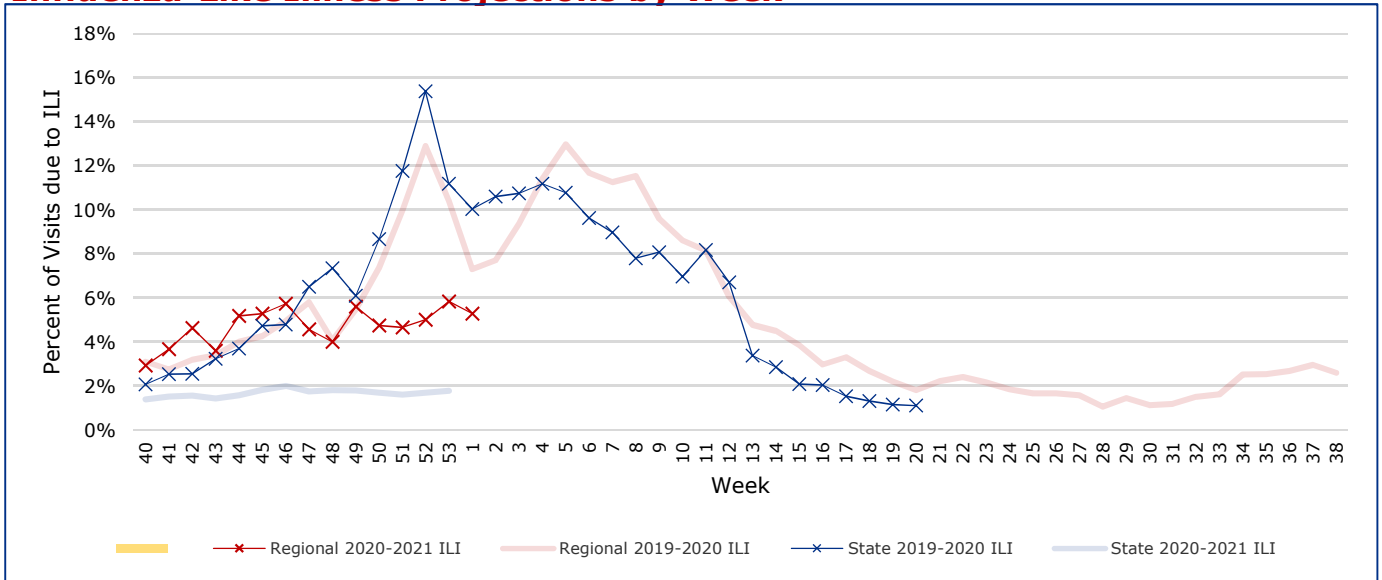
*Counties with total percent of visits due to ILI above 4.0% for the week are considered to have high/abnormal levels.

Map of Regional Flu Activity



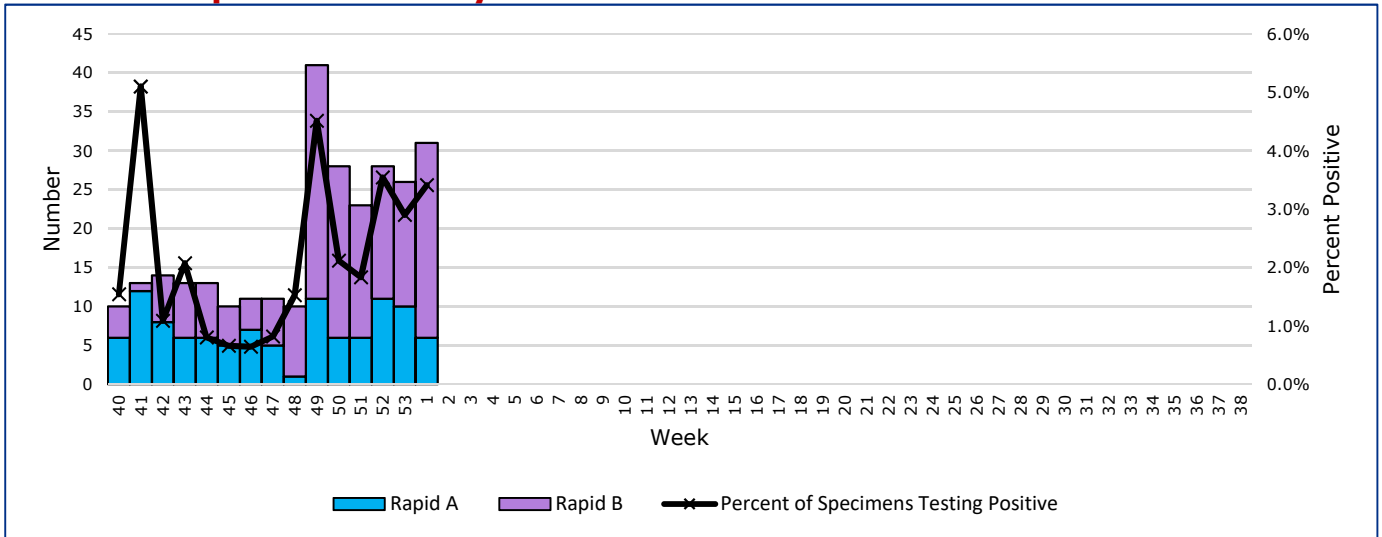
The map above depicts the previous week's reports of flu or influenza-like illness activity in each county. The legend on the bottom right of the map describes the meaning of each color.

Influenza-Like Illness Projections by Week



This chart documents the percentage of patient visits that were due to ILI at hospitals and clinics around the region. It compares our region's data with the state's data and also compares to last flu season. Only confirmed COVID-19 cases in PHR 9/10 are included on this graph.

Positive Rapid Flu Tests by Week



This chart documents the number of rapid tests that have come back positive for flu A and flu B each week throughout the region.

Flu Data by County

County	Week 52				Week 51				Week 50			
	Patient Visits	% with ILI	Flu A	Flu B	Patient Visits	% with ILI	Flu A	Flu B	Patient Visits	% with ILI	Flu A	Flu B
Andrews	298	3%	0	0	396	0%	0	0	492	0%	0	0
Borden	2	0%	0	0	2	50%	0	0	1	0%	0	0
Brewster	63	0%	0	0	63	2%	0	0	56	2%	0	0
Coke	52	2%	0	0	32	6%	0	0	44	5%	0	0
Concho	36	6%	0	0	43	7%	0	0	37	5%	0	0
Crane	128	2%	0	0	139	1%	0	0	29	0%	0	0
Crockett	13	0%	0	0	26	4%	0	0	20	5%	0	0
Culberson	39	41%	0	2	45	36%	0	0	37	30%	1	0
Dawson	142	0%	0	0	117	2%	0	0	139	0%	0	0
Ector	3079	10%	4	9	3658	8%	4	14	4002	9%	3	18
El Paso	4343	1%	0	0	5090	1%	1	0	5269	2%	0	1
Gaines	103	1%	0	0	80	0%	0	0	31	0%	0	0
Glasscock	4	75%	0	0	7	14%	0	0	6	0%	0	0
Howard	282	2%	0	0	279	0%	0	0	321	1%	0	0
Hudspeth	17	6%	0	0	16	0%	0	0	17	0%	0	0
Irion	20	10%	0	0	22	18%	0	0	40	0%	0	0
Jeff Davis	7	0%	0	0	14	0%	0	0	10	10%	0	0
Kimble	140	0%	0	1	152	0%	0	0	158	0%	0	0
Loving	0		0	0	0		0	0	0		0	0
McCulloch	104	2%	0	0	101	1%	0	0	92	1%	0	0
Martin	35	6%	0	0	399	12%	0	0	465	7%	0	0
Mason	36	0%	0	0	53	0%	0	0	38	0%	0	0
Menard	15	7%	0	0	19	0%	0	0	22	0%	0	0
Midland	1813	9%	0	1	2163	7%	0	0	2213	6%	0	1
Pecos	113	0%	0	0	1402	1%	0	0	757	1%	0	0
Presidio	27	0%	0	0	25	0%	0	0	36	0%	0	0
Reagan	33	3%	0	0	38	0%	0	0	38	0%	0	0
Reeves	259	6%	0	1	384	2%	0	0	366	0%	0	0
Schleicher	20	0%	0	0	36	3%	0	0	31	6%	0	0
Sterling	11	9%	0	0	15	7%	0	0	24	0%	0	0
Sutton	30	3%	0	0	41	0%	0	0	29	0%	0	0
Terrell	7	0%	0	0	6	0%	0	0	7	0%	0	0
Tom Green	3080	3%	7	3	3116	3%	1	2	3244	3%	2	2
Upton	54	7%	0	0	75	17%	0	1	80	14%	0	0
Ward	176	9%	0	0	194	4%	0	0	201	6%	0	0
Winkler	125	4%	0	0	232	43%	0	0	421	17%	0	0
Total	14706	49601.5%	11	17	18480	4.5%	6	17	18773	4.7%	6	22

Flu-Associated Pediatric Deaths & Outbreaks

No flu-associated pediatric deaths have been reported in PHR 9/10 this flu season. No new flu outbreaks were reported for Week 52.