

Weekly Flu Surveillance Report
Public Health Region 9/10
Week 53- December 27- January 2, 2021



Texas Department of State Health Services

Disclaimer

Most cases of influenza are not reportable in the state of Texas, thus the data in this report was collected from hospitals, clinics, and schools throughout the region who have agreed to voluntarily submit data.

Definitions

ILI: Influenza-Like Illness. This is an illness that resembles the flu, but has not been confirmed. **Rapid:** These tests are typically done in-house to quickly test for influenza. **PCR:** These tests are generally more precise than rapid tests and are performed at the DSHS state lab and many commercial labs to confirm a case of influenza.

Geographic Spread of Influenza in the Region

No Activity	Sporadic	Local	Regional	Widespread
-------------	----------	-------	----------	------------

Geographic spread is determined using the CDC's guidelines for flu activity: <http://www.cdc.gov/flu/weekly/overview.htm>.

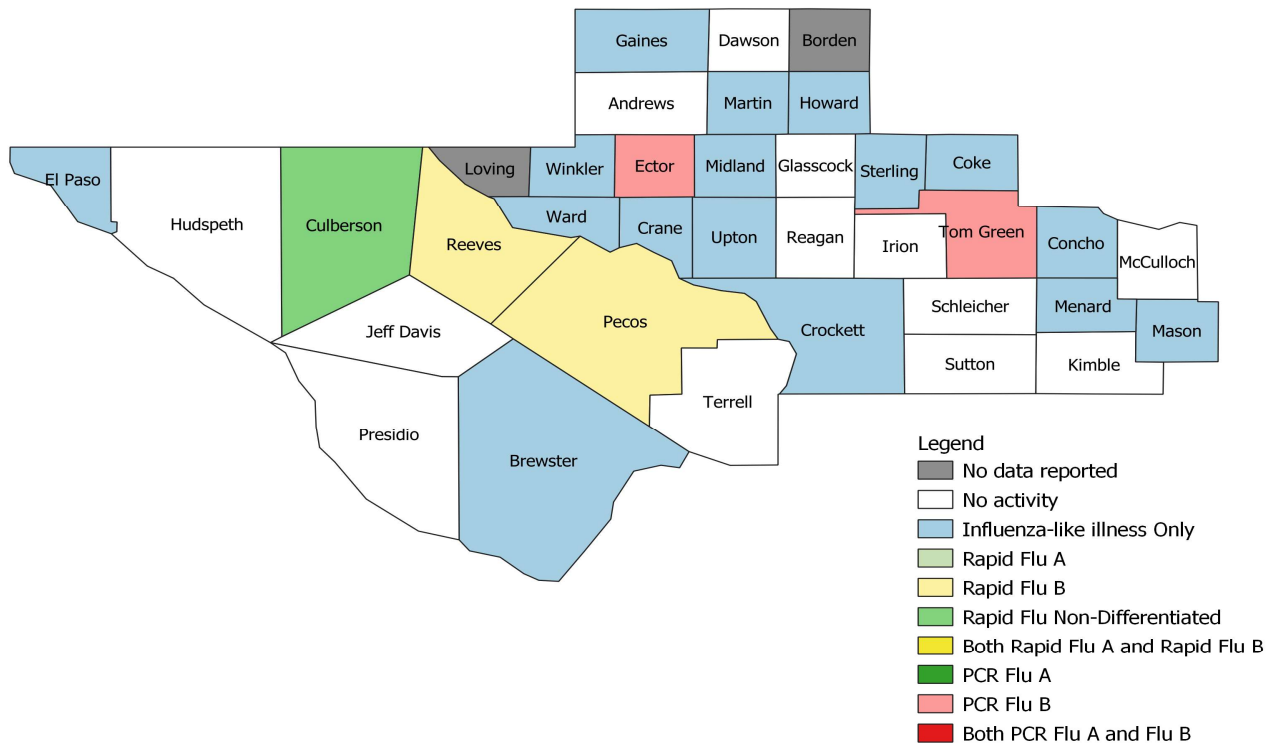
Summary Data

Condition	Week 53	Week 52	Week 51
Number of Counties Reporting (36 total)	↓ 34	35	35
Number of Counties Reporting ILI	↓ 16	21	18
Number of Counties Reporting High Levels of ILI*	↓ 6	7	6
Number of Counties Reporting Flu A	↑ 4	2	3
Number of Counties Reporting Flu B	↓ 3	6	3
Number of Counties Reporting Flu A & Flu B	→ 2	2	2

The arrows represent changes from the previous week. A sideways arrow means there was no change in that condition.

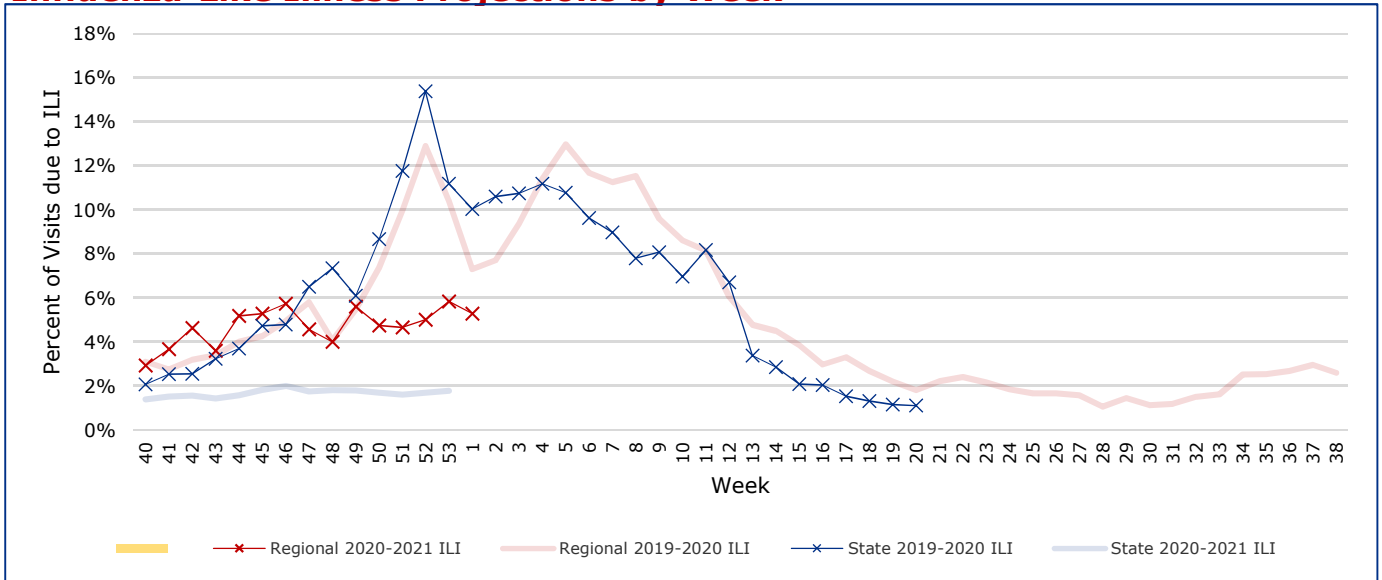
*Counties with total percent of visits due to ILI above 4.0% for the week are considered to have high/abnormal levels.

Map of Regional Flu Activity



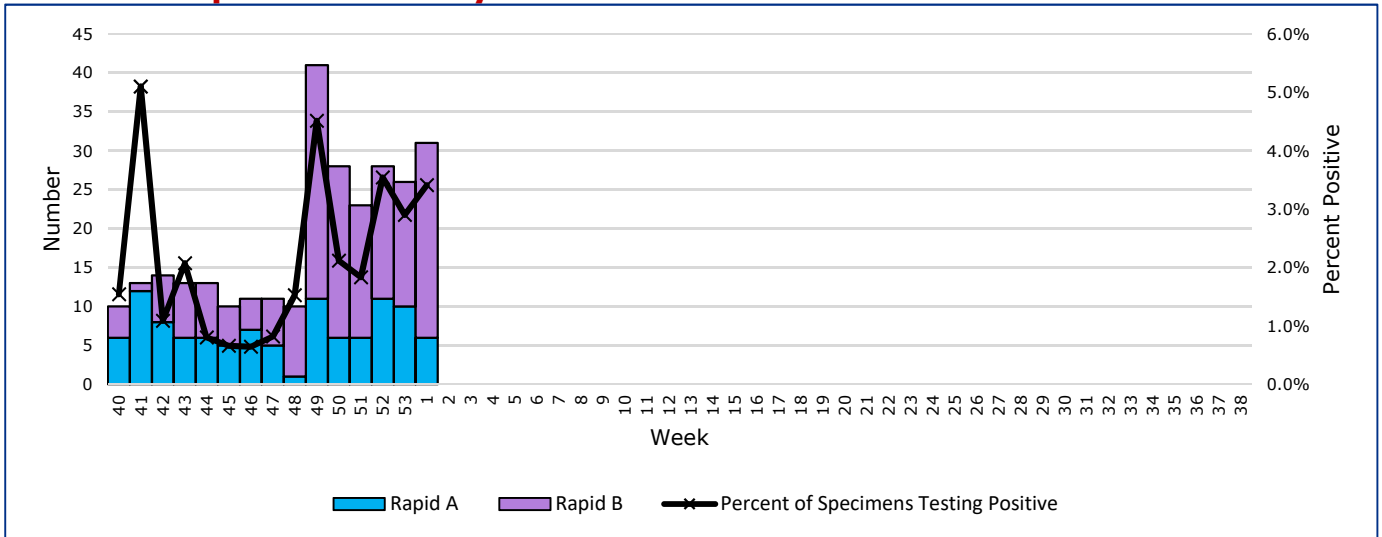
The map above depicts the previous week's reports of flu or influenza-like illness activity in each county. The legend on the bottom right of the map describes the meaning of each color.

Influenza-Like Illness Projections by Week



This chart documents the percentage of patient visits that were due to ILI at hospitals and clinics around the region. It compares our region's data with the state's data and also compares to last flu season. Only confirmed COVID-19 cases in PHR 9/10 are included on this graph.

Positive Rapid Flu Tests by Week



This chart documents the number of rapid tests that have come back positive for flu A and flu B each week throughout the region.

Flu Data by County

County	Week 53				Week 52				Week 51			
	Patient Visits	% with ILI	Flu A	Flu B	Patient Visits	% with ILI	Flu A	Flu B	Patient Visits	% with ILI	Flu A	Flu B
Andrews	317	0%	0	0	298	3%	0	0	396	0%	0	0
Borden	0		0	0	2	0%	0	0	2	50%	0	0
Brewster	80	5%	0	0	63	0%	0	0	63	2%	0	0
Coke	58	3%	0	0	52	2%	0	0	32	6%	0	0
Concho	47	6%	0	0	36	6%	0	0	43	7%	0	0
Crane	130	1%	0	0	128	2%	0	0	139	1%	0	0
Crockett	32	6%	0	0	13	0%	0	0	26	4%	0	0
Culberson	42	45%	0	1	39	41%	0	2	45	36%	0	0
Dawson	127	0%	0	0	142	0%	0	0	117	2%	0	0
Ector	2797	14%	7	14	3079	10%	4	9	3658	8%	4	14
El Paso	5256	1%	0	0	4343	1%	0	0	5090	1%	1	0
Gaines	87	2%	0	0	103	1%	0	0	80	0%	0	0
Glasscock	4	0%	0	0	4	75%	0	0	7	14%	0	0
Howard	271	1%	0	0	282	2%	0	0	279	0%	0	0
Hudspeth	13	0%	0	0	17	6%	0	0	16	0%	0	0
Irion	18	0%	0	0	20	10%	0	0	22	18%	0	0
Jeff Davis	11	0%	0	0	7	0%	0	0	14	0%	0	0
Kimble	198	0%	0	0	140	0%	0	1	152	0%	0	0
Loving	0		0	0	0		0	0	0		0	0
McCulloch	96	0%	0	0	104	2%	0	0	101	1%	0	0
Martin	251	22%	0	0	35	6%	0	0	399	1%	0	0
Mason	35	6%	0	0	36	0%	0	0	53	0%	0	0
Menard	24	4%	0	0	15	7%	0	0	19	0%	0	0
Midland	2071	12%	0	0	1813	9%	0	1	2163	7%	0	0
Pecos	485	2%	1	0	113	0%	0	0	1402	1%	0	0
Presidio	30	0%	0	0	27	0%	0	0	25	0%	0	0
Reagan	30	0%	0	0	33	3%	0	0	38	0%	0	0
Reeves	491	1%	1	0	259	6%	0	1	384	0%	0	0
Schleicher	24	0%	0	0	20	0%	0	0	36	3%	0	0
Sterling	13	8%	0	0	11	9%	0	0	15	7%	0	0
Sutton	42	0%	0	0	30	3%	0	0	41	0%	0	0
Terrell	1	0%	0	0	7	0%	0	0	6	0%	0	0
Tom Green	3536	3%	1	1	3080	3%	7	3	3116	3%	1	2
Upton	69	4%	0	0	54	7%	0	0	75	3%	0	1
Ward	316	14%	0	0	176	9%	0	0	194	4%	0	0
Winkler	123	2%	0	0	125	4%	0	0	232	43%	0	0
Total	17125	66601.8%	10	16	14706	4.9%	11	17	18480	4.5%	6	17

Flu-Associated Pediatric Deaths & Outbreaks

No flu-associated pediatric deaths have been reported in PHR 9/10 this flu season. No new flu outbreaks were reported for Week 53.