

**Weekly Flu Surveillance Report**  
**Public Health Region 9/10**  
**Week 40- September 27 - October 3**



Texas Department of State Health Services

**Disclaimer**

Most cases of influenza are not reportable in the state of Texas, thus the data in this report was collected from hospitals, clinics, and schools throughout the region who have agreed to voluntarily submit data.

**Definitions**

**ILI:** Influenza-Like Illness. This is an illness that resembles the flu, but has not been confirmed. **Rapid:** These tests are typically done in-house to quickly test for influenza. **PCR:** These tests are generally more precise than rapid tests and are performed at the DSHS state lab and many commercial labs to confirm a case of influenza.

**Geographic Spread of Influenza in the Region**

No Activity	Sporadic	Local	Regional	Widespread
-------------	----------	-------	----------	------------

Geographic spread is determined using the CDC's guidelines for flu activity: <http://www.cdc.gov/flu/weekly/overview.htm>.

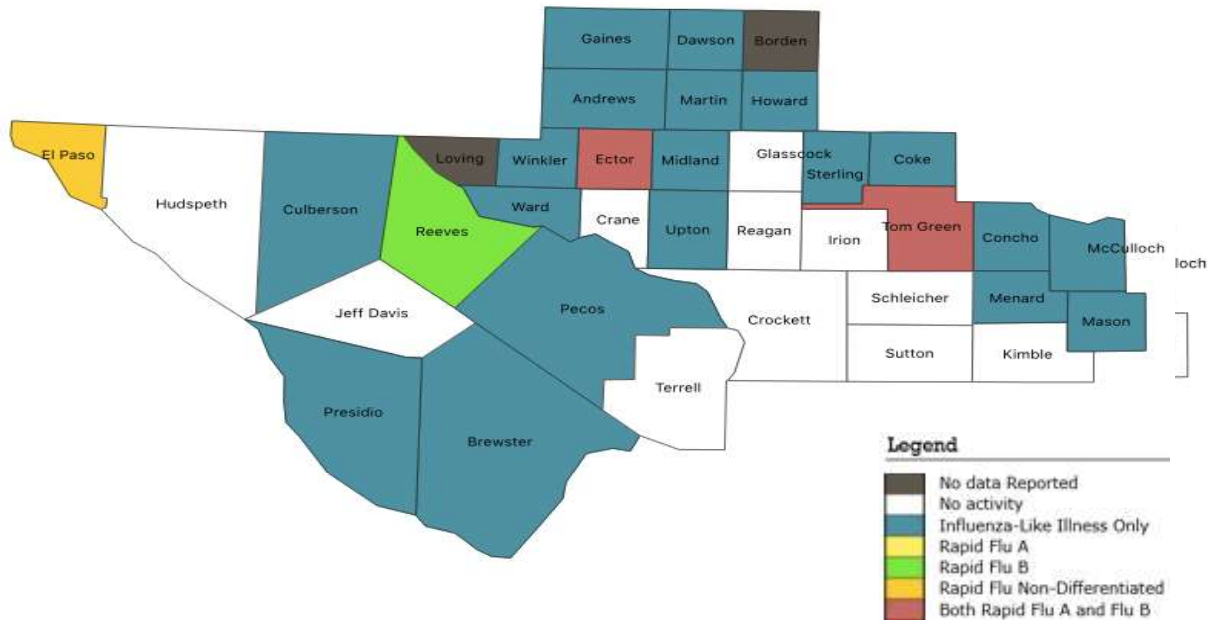
**Summary Data**

Condition	Week 40	Week 39	Week 38
Number of Counties Reporting (36 total)	↑ 36	0	0
Number of Counties Reporting ILI	↑ 36	0	0
Number of Counties Reporting High Levels of ILI*	→ 0	0	0
Number of Counties Reporting Flu A	↑ 3	0	0
Number of Counties Reporting Flu B	↑ 4	0	0
Number of Counties Reporting Flu A & Flu B	↑ 2	0	0

The arrows represent changes from the previous week. A sideways arrow means there was no change in that condition.

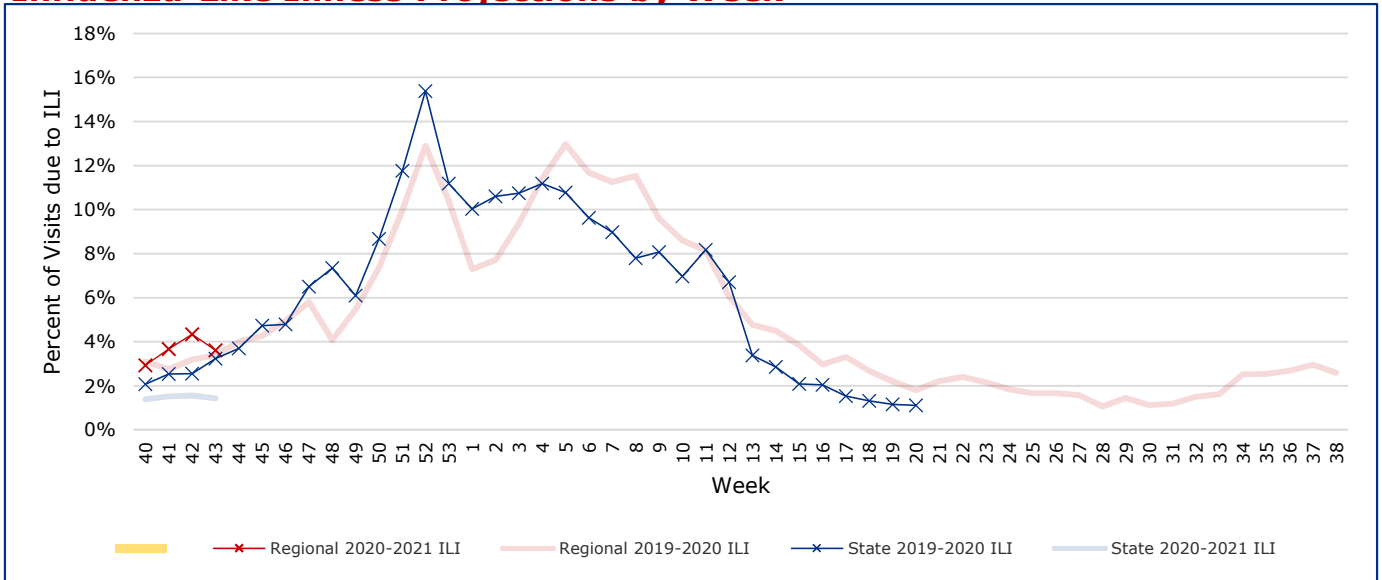
\*Counties with total percent of visits due to ILI above 4.0% for the week are considered to have high/abnormal levels.

**Map of Regional Flu Activity**



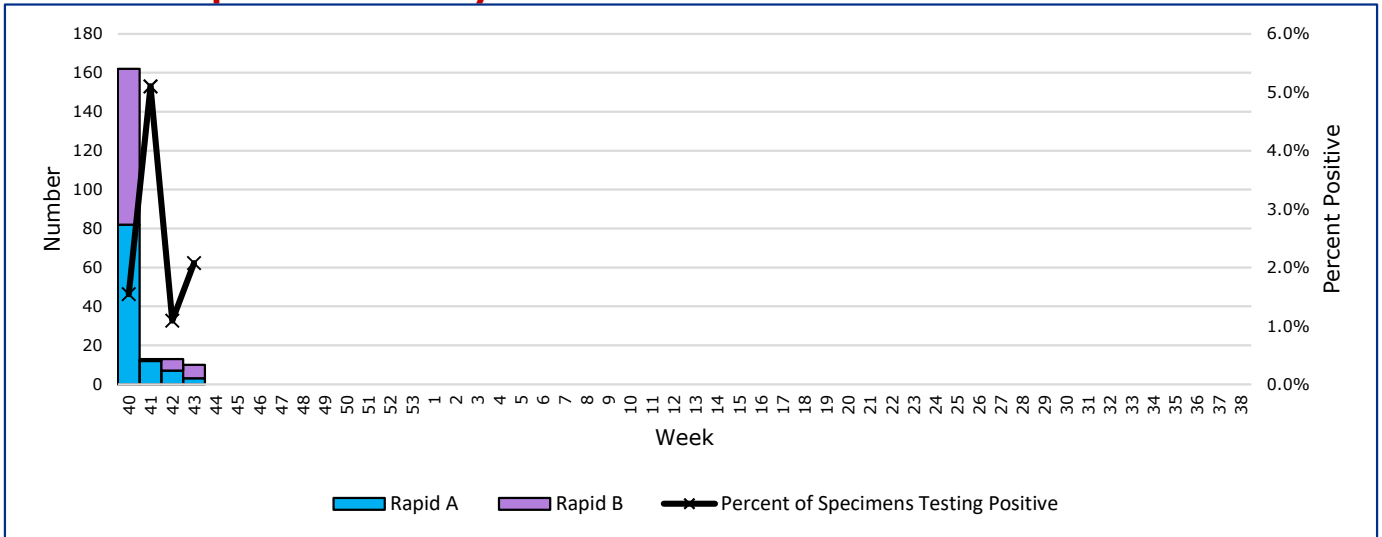
The map above depicts the previous week's reports of flu or influenza-like illness activity in each county. The legend on the bottom right of the map describes the meaning of each color.

## Influenza-Like Illness Projections by Week



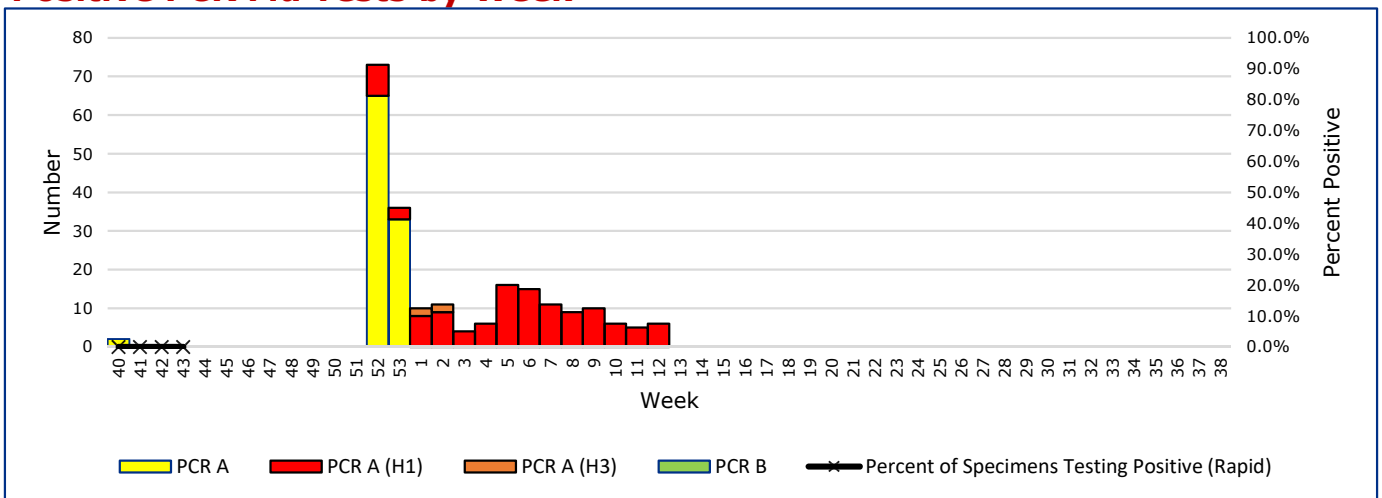
This chart documents the percentage of patient visits that were due to ILI at hospitals and clinics around the region. It compares our region's data with the state's data and also compares to last flu season. Only confirmed COVID-19 cases in PHR 9/10 are included on this graph.

## Positive Rapid Flu Tests by Week



This chart documents the number of rapid tests that have come back positive for flu A and flu B each week throughout the region.

## Positive PCR Flu Tests by Week



This chart documents the number of PCR tests that have come back positive for flu A and flu B each week throughout the region.

## Flu Data by County

County	Week 40				Week 39				Week 38			
	Patient Visits	% with ILI	Flu A	Flu B	Patient Visits	% with ILI	Flu A	Flu B	Patient Visits	% with ILI	Flu A	Flu B
Andrews	501	0%	0	0	0		0	0	0		0	0
Borden	0		0	0	0		0	0	0		0	0
Brewster	60	2%	0	0	0		0	0	0		0	0
Coke	37	3%	0	0	0		0	0	0		0	0
Concho	70	1%	0	0	17	0%	0	0	0		0	0
Crane	13	0%	0	0	0		0	0	0		0	0
Crockett	11	0%	0	0	0		0	0	0		0	0
Culberson	41	7%	0	0	0		0	0	0		0	0
Dawson	145	1%	0	0	0		0	0	0		0	0
Ector	2286	6%	79	77	1609	4%	0	0	0		0	0
El Paso	6067	2%	0	2	23	0%	0	0	0		0	0
Gaines	46	2%	0	0	0		0	0	0		0	0
Glasscock	3	0%	0	0	0		0	0	0		0	0
Howard	324	1%	0	0	0		0	0	0		0	0
Hudspeth	17	0%	0	0	0		0	0	0		0	0
Irion	10	0%	0	0	0		0	0	0		0	0
Jeff Davis	6	0%	0	0	0		0	0	0		0	0
Kimble	141	0%	0	0	0		0	0	0		0	0
Loving	0		0	0	0		0	0	0		0	0
McCulloch	93	3%	0	0	0		0	0	0		0	0
Martin	463	10%	0	0	401	4%	0	0	0		0	0
Mason	28	4%	0	0	0		0	0	0		0	0
Menard	15	7%	0	0	0		0	0	0		0	0
Midland	4966	3%	0	0	0		0	0	0		0	0
Pecos	160	3%	0	0	0		0	0	0		0	0
Presidio	53	9%	0	0	24	21%	0	0	0		0	0
Reagan	19	0%	0	0	0		0	0	0		0	0
Reeves	137	9%	3	0	89	13%	1	0	0		0	0
Schleicher	26	0%	0	0	0		0	0	0		0	0
Sterling	22	5%	0	0	0		0	0	0		0	0
Sutton	24	0%	0	0	0		0	0	0		0	0
Terrell	14	0%	0	0	0		0	0	0		0	0
Tom Green	2523	2%	2	1	0		0	0	0		0	0
Upton	196	4%	0	0	45	0%	0	0	0		0	0
Ward	531	4%	0	0	0		0	0	0		0	0
Winkler	21	5%	0	0	0		0	0	0		0	0
<b>Total</b>	<b>19069</b>	<b>30201.2%</b>	<b>84</b>	<b>80</b>	<b>2208</b>	<b>8.4%</b>	<b>1</b>	<b>0</b>	<b>0</b>		<b>0</b>	<b>0</b>

## Flu-Associated Pediatric Deaths & Outbreaks

No flu-associated pediatric deaths have been reported in PHR 9/10 this flu season. No new flu outbreaks were reported for Week 41.