

Weekly Flu Surveillance Report

Public Health Region 9/10

Week 41- October 4-10



Texas Department of State Health Services

Disclaimer

Most cases of influenza are not reportable in the state of Texas, thus the data in this report was collected from hospitals, clinics, and schools throughout the region who have agreed to voluntarily submit data.

Definitions

ILI: Influenza-Like Illness. This is an illness that resembles the flu, but has not been confirmed. **Rapid:** These tests are typically done in-house to quickly test for influenza. **PCR:** These tests are generally more precise than rapid tests and are performed at the DSHS state lab and many commercial labs to confirm a case of influenza.

Geographic Spread of Influenza in the Region

No Activity	Sporadic	Local	Regional	Widespread
-------------	----------	-------	----------	------------

Geographic spread is determined using the CDC's guidelines for flu activity: <http://www.cdc.gov/flu/weekly/overview.htm>.

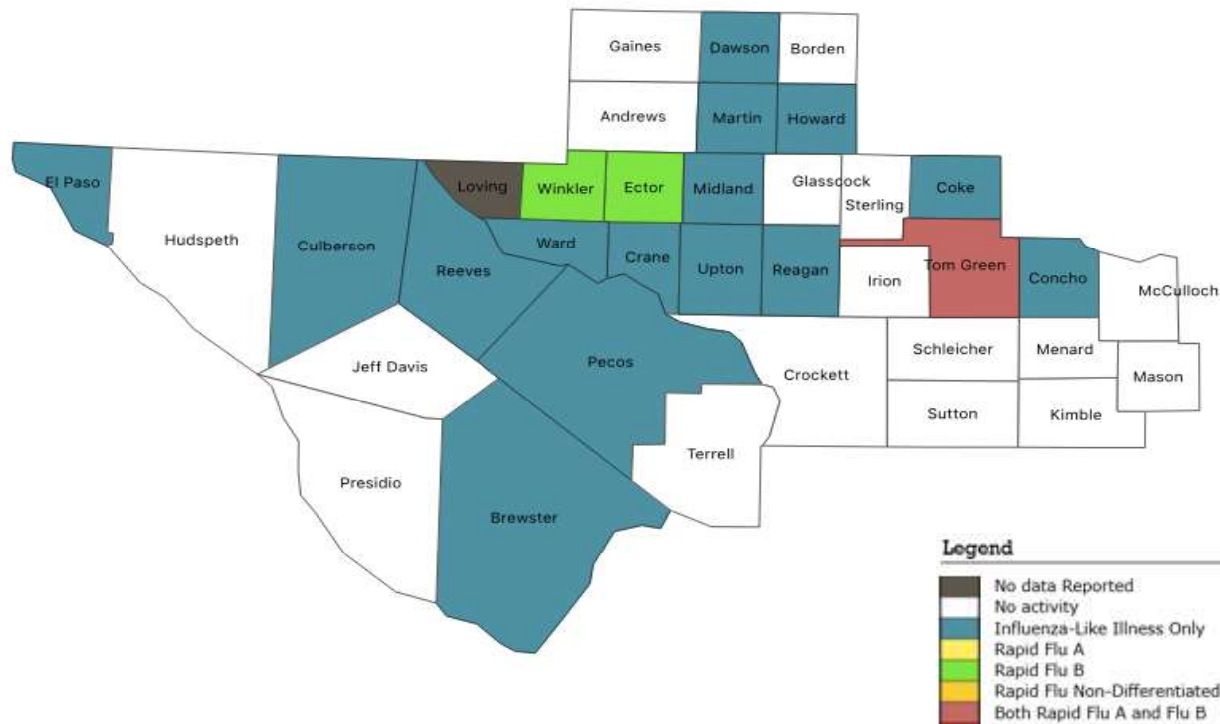
Summary Data

Condition	Week 41	Week 40	Week 39
Number of Counties Reporting (36 total)	↓ 35	36	0
Number of Counties Reporting ILI	↓ 18	36	0
Number of Counties Reporting High Levels of ILI*	↑ 7	0	0
Number of Counties Reporting Flu A	→ 3	3	0
Number of Counties Reporting Flu B	↓ 1	4	0
Number of Counties Reporting Flu A & Flu B	↓ 1	2	0

The arrows represent changes from the previous week. A sideways arrow means there was no change in that condition.

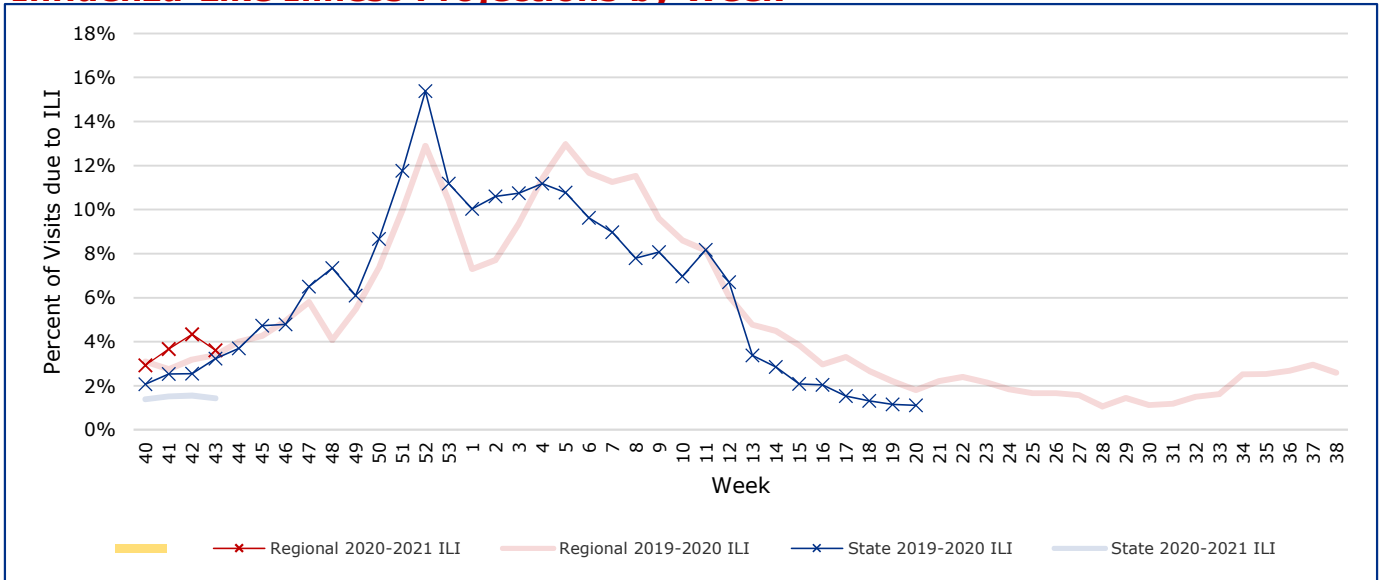
*Counties with total percent of visits due to ILI above 4.0% for the week are considered to have high/abnormal levels.

Map of Regional Flu Activity



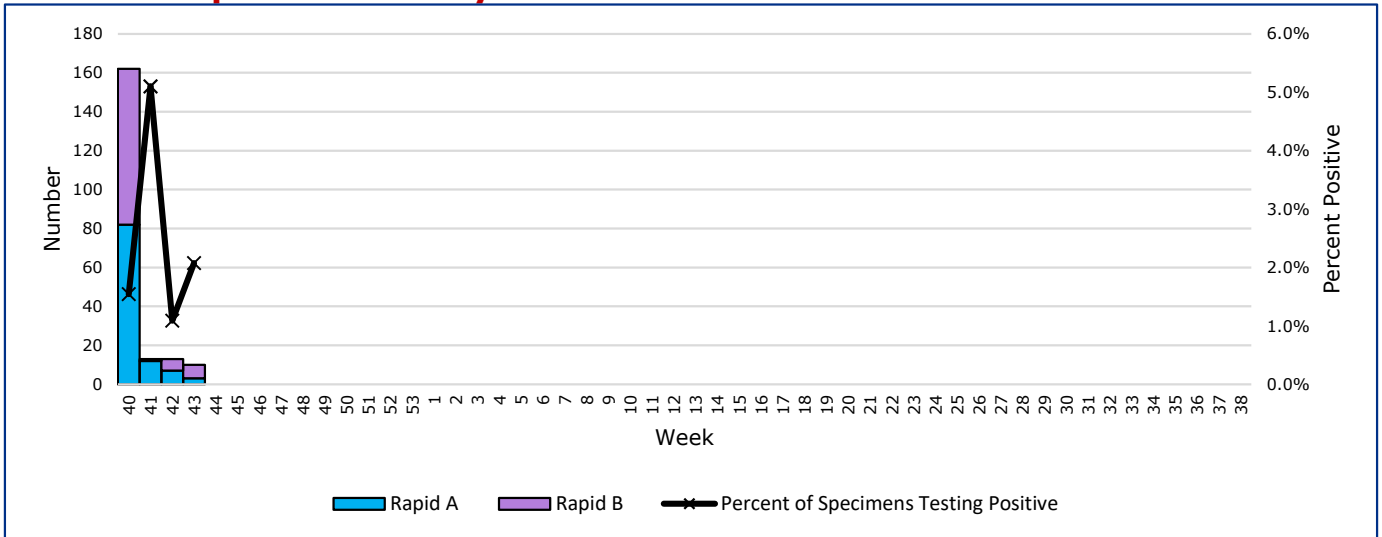
The map above depicts the previous week's reports of flu or influenza-like illness activity in each county. The legend on the bottom right of the map describes the meaning of each color.

Influenza-Like Illness Projections by Week



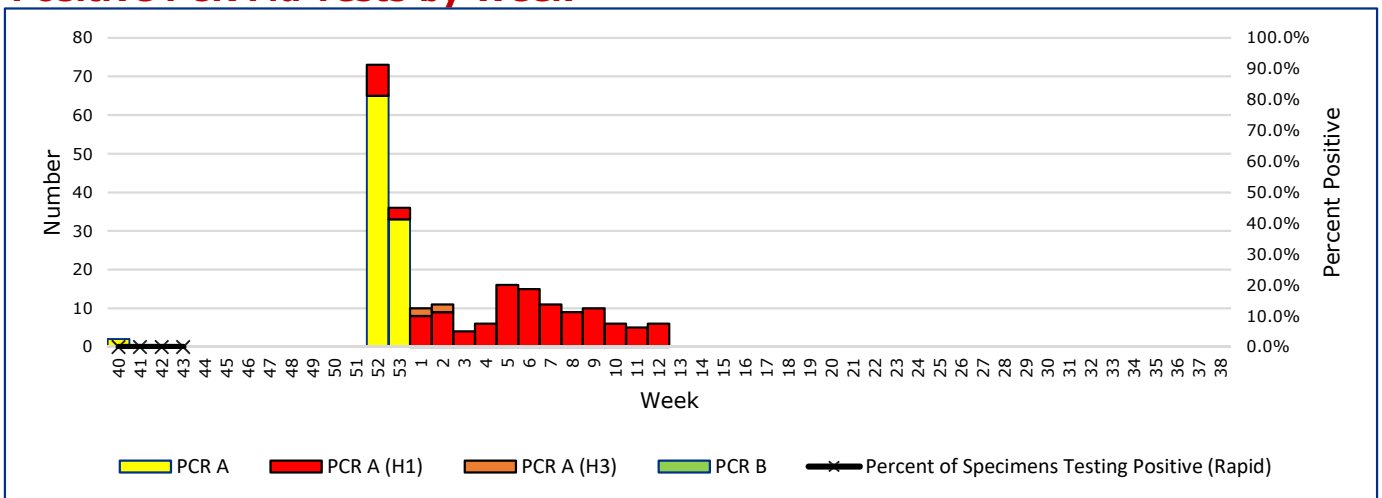
This chart documents the percentage of patient visits that were due to ILI at hospitals and clinics around the region. It compares our region's data with the state's data and also compares to last flu season. Only confirmed COVID-19 cases in PHR 9/10 are included on this graph.

Positive Rapid Flu Tests by Week



This chart documents the number of rapid tests that have come back positive for flu A and flu B each week throughout the region.

Positive PCR Flu Tests by Week



This chart documents the number of PCR tests that have come back positive for flu A and flu B each week throughout the region.

Flu Data by County

County	Week 41				Week 40				Week 39			
	Patient Visits	% with ILI	Flu A	Flu B	Patient Visits	% with ILI	Flu A	Flu B	Patient Visits	% with ILI	Flu A	Flu B
Andrews	623	0%	0	0	501	0%	0	0	0		0	0
Borden	4	0%	0	0	2894		0	0	0		0	0
Brewster	66	2%	0	0	2954	2%	0	0	0		0	0
Coke	38	5%	0	0	2931	3%	0	0	0		0	0
Concho	417	6%	0	0	2964	1%	0	0	17	0%	0	0
Crane	13	8%	0	0	2907	0%	0	0	0		0	0
Crockett	13	0%	0	0	2905	0%	0	0	0		0	0
Culberson	63	27%	0	0	2935	7%	0	0	0		0	0
Dawson	176	1%	0	0	3039	1%	0	0	0		0	0
Ector	3622	3%	1	0	5180	6%	79	77	1609	4%	0	0
El Paso	7136	3%	0	0	8961	2%	0	2	23	0%	0	0
Gaines	27	0%	0	0	2940	2%	0	0	0		0	0
Glasscock	6	0%	0	0	2897	0%	0	0	0		0	0
Howard	1096	2%	0	0	3218	1%	0	0	0		0	0
Hudspeth	25	0%	0	0	2911	0%	0	0	0		0	0
Irion	33	0%	0	0	2904	0%	0	0	0		0	0
Jeff Davis	13	0%	0	0	2900	0%	0	0	0		0	0
Kimble	256	0%	0	0	3035	0%	0	0	0		0	0
Loving	0		0	0	2894		0	0	0		0	0
McCulloch	89	0%	0	0	2987	3%	0	0	0		0	0
Martin	39	3%	0	0	3357	10%	0	0	401	4%	0	0
Mason	26	0%	0	0	2922	4%	0	0	0		0	0
Menard	18	0%	0	0	2909	7%	0	0	0		0	0
Midland	2173	5%	0	0	7860	3%	0	0	0		0	0
Pecos	212	2%	0	0	3054	3%	0	0	0		0	0
Presidio	39	0%	0	0	2947	9%	0	0	24	0%	0	0
Reagan	27	4%	0	0	2913	0%	0	0	0		0	0
Reeves	30	3%	0	0	3031	9%	3	0	89	13%	1	0
Schleicher	28	0%	0	0	2920	0%	0	0	0		0	0
Sterling	19	0%	0	0	2916	5%	0	0	0		0	0
Sutton	40	0%	0	0	2918	0%	0	0	0		0	0
Terrell	11	0%	0	0	2908	0%	0	0	0		0	0
Tom Green	2737	2%	1	1	5417	2%	2	1	0		0	0
Upton	115	23%	0	0	3090	4%	0	0	45	0%	0	0
Ward	74	1%	0	0	3425	4%	0	0	0		0	0
Winkler	642	22%	10	0	2915	5%	0	0	0		0	0
Total	19946	39801.4%	12	1	120359	2.9%	84	80	2208	8.4%	1	0

Flu-Associated Pediatric Deaths & Outbreaks

No flu-associated pediatric deaths have been reported in PHR 9/10 this flu season. No new flu outbreaks were reported for Week 41.