

Weekly Flu Surveillance Report

Public Health Region 9/10

Week 42- October 11-17



Texas Department of State Health Services

Disclaimer

Most cases of influenza are not reportable in the state of Texas, thus the data in this report was collected from hospitals, clinics, and schools throughout the region who have agreed to voluntarily submit data.

Definitions

ILI: Influenza-Like Illness. This is an illness that resembles the flu, but has not been confirmed. **Rapid:** These tests are typically done in-house to quickly test for influenza. **PCR:** These tests are generally more precise than rapid tests and are performed at the DSHS state lab and many commercial labs to confirm a case of influenza.

Geographic Spread of Influenza in the Region

No Activity	Sporadic	Local	Regional	Widespread
-------------	----------	-------	----------	------------

Geographic spread is determined using the CDC's guidelines for flu activity: <http://www.cdc.gov/flu/weekly/overview.htm>.

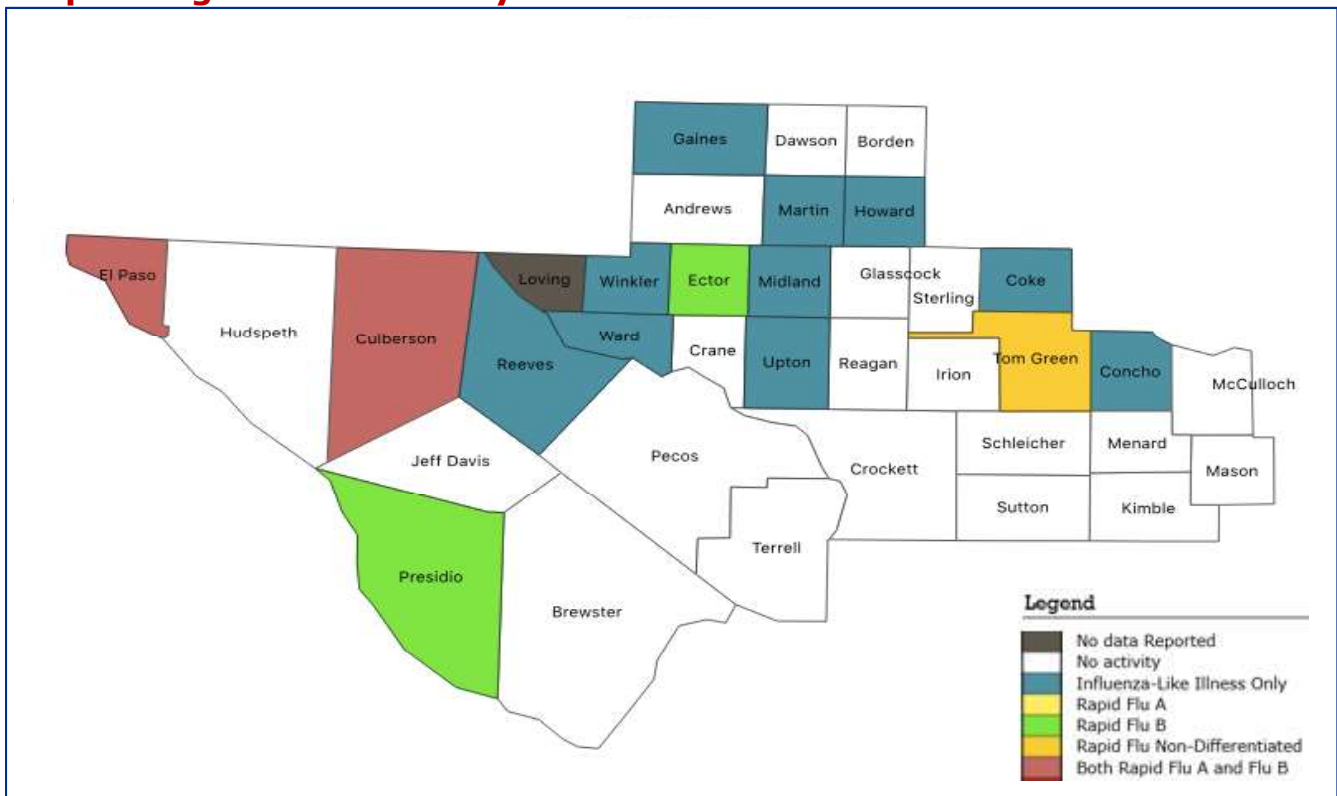
Summary Data

Condition	Week 42	Week 41	Week 40
Number of Counties Reporting (36 total)	→ 35	35	36
Number of Counties Reporting ILI	↓ 12	18	36
Number of Counties Reporting High Levels of ILI*	↓ 1	7	0
Number of Counties Reporting Flu A	↑ 4	3	3
Number of Counties Reporting Flu B	↑ 3	1	4
Number of Counties Reporting Flu A & Flu B	↑ 2	1	2

The arrows represent changes from the previous week. A sideways arrow means there was no change in that condition.

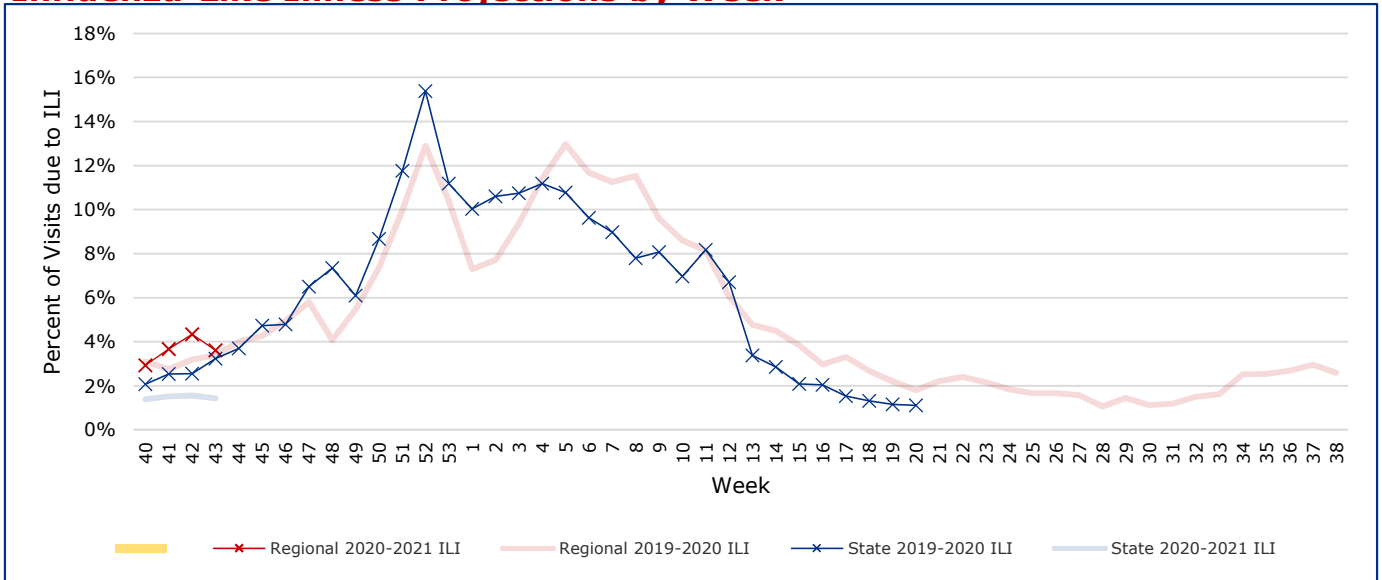
*Counties with total percent of visits due to ILI above 4.0% for the week are considered to have high/abnormal levels.

Map of Regional Flu Activity



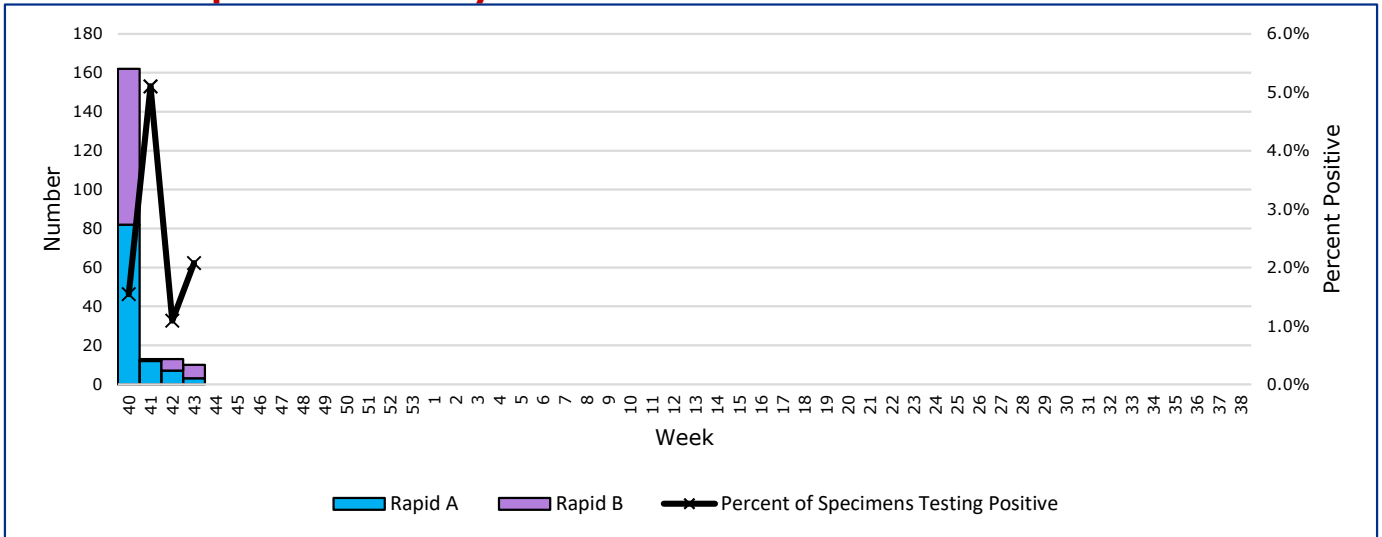
The map above depicts the previous week's reports of flu or influenza-like illness activity in each county. The legend on the bottom right of the map describes the meaning of each color.

Influenza-Like Illness Projections by Week



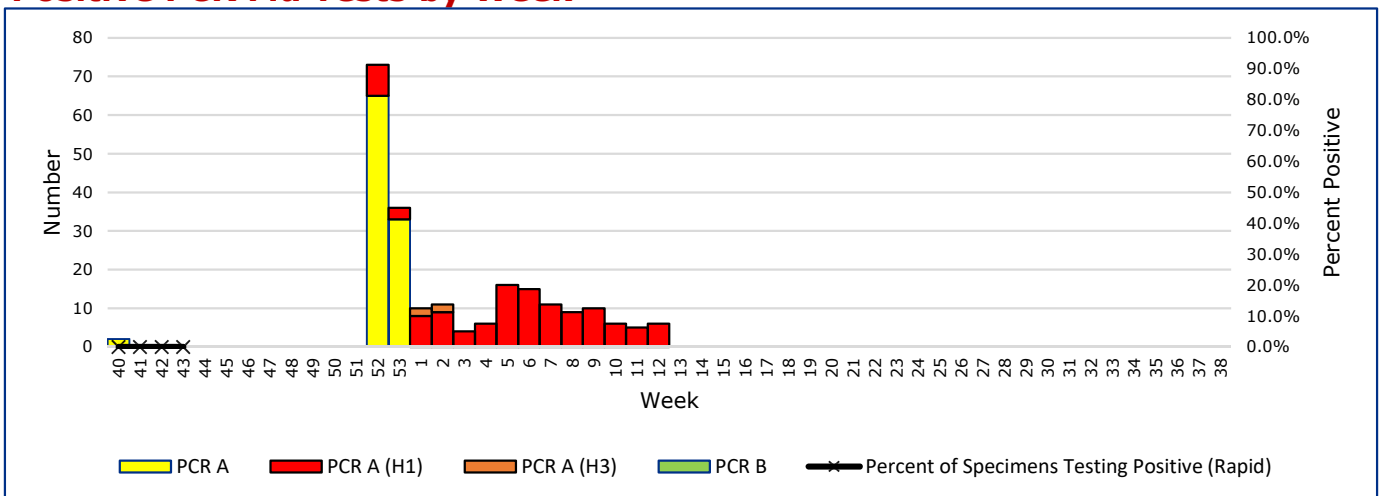
This chart documents the percentage of patient visits that were due to ILI at hospitals and clinics around the region. It compares our region's data with the state's data and also compares to last flu season. Only confirmed COVID-19 cases in PHR 9/10 are included on this graph.

Positive Rapid Flu Tests by Week



This chart documents the number of rapid tests that have come back positive for flu A and flu B each week throughout the region.

Positive PCR Flu Tests by Week



This chart documents the number of PCR tests that have come back positive for flu A and flu B each week throughout the region.

Flu Data by County

County	Week 42				Week 41				Week 40			
	Patient Visits	% with ILI	Flu A	Flu B	Patient Visits	% with ILI	Flu A	Flu B	Patient Visits	% with ILI	Flu A	Flu B
Andrews	537	0%	0	0	623	0%	0	0	501	0%	0	0
Borden	1	0%	0	0	3430	0%	0	0	0		0	0
Brewster	78	0%	0	0	3492	2%	0	0	60	2%	0	0
Coke	39	3%	0	0	3464	5%	0	0	37	3%	0	0
Concho	46	4%	0	0	3843	6%	0	0	70	1%	0	0
Crane	12	0%	0	0	3439	8%	0	0	13	0%	0	0
Crockett	22	0%	0	0	3439	0%	0	0	11	0%	0	0
Culberson	55	65%	3	2	3489	27%	0	0	41	7%	0	0
Dawson	157	0%	0	0	3602	1%	0	0	145	1%	0	0
Ector	4820	3%	2	0	7048	3%	1	0	2286	2%	79	77
El Paso	7465	3%	2	2	10562	3%	0	0	6067	2%	0	2
Gaines	36	3%	0	0	3453	0%	0	0	46	2%	0	0
Glasscock	4	0%	0	0	3432	0%	0	0	3	0%	0	0
Howard	333	2%	0	0	4522	2%	0	0	324	1%	0	0
Hudspeth	25	0%	0	0	3451	0%	0	0	17	0%	0	0
Irion	26	0%	0	0	3459	0%	0	0	10	0%	0	0
Jeff Davis	13	0%	0	0	3439	0%	0	0	6	0%	0	0
Kimble	223	0%	0	0	3682	0%	0	0	141	0%	0	0
Loving	0		0	0	3426		0	0	0		0	0
McCulloch	90	0%	0	0	3515	0%	0	0	93	3%	0	0
Martin	415	3%	0	0	3465	3%	0	0	463	10%	0	0
Mason	14	0%	0	0	3452	0%	0	0	28	4%	0	0
Menard	20	0%	0	0	3444	0%	0	0	15	7%	0	0
Midland	3396	8%	0	0	5599	5%	0	0	4966	3%	0	0
Pecos	94	0%	0	0	3638	2%	0	0	160	1%	0	0
Presidio	43	0%	81	0	3465	0%	0	0	53	4%	0	0
Reagan	29	0%	0	0	3453	4%	0	0	19	0%	0	0
Reeves	412	0%	0	0	3456	3%	0	0	137	9%	3	0
Schleicher	51	0%	0	0	3454	0%	0	0	26	0%	0	0
Sterling	18	0%	0	0	3445	0%	0	0	22	5%	0	0
Sutton	34	0%	0	0	3466	0%	0	0	24	0%	0	0
Terrell	14	0%	0	0	3437	0%	0	0	14	0%	0	0
Tom Green	3502	2%	0	2	6163	2%	1	1	2523	2%	2	1
Upton	121	43%	0	0	3541	23%	0	0	196	1%	0	0
Ward	1862	10%	0	0	3500	1%	0	0	531	4%	0	0
Winkler	780	7%	0	0	4068	22%	10	0	21	5%	0	0
Total	24787	71801.4%	88	6	139856	3.7%	12	1	19069	2.9%	84	80

Flu-Associated Pediatric Deaths & Outbreaks

No flu-associated pediatric deaths have been reported in PHR 9/10 this flu season. No new flu outbreaks were reported for Week 43.