

Weekly Flu Surveillance Report

Public Health Region 9/10

Week 43- October 18-24



Texas Department of State Health Services

Disclaimer

Most cases of influenza are not reportable in the state of Texas, thus the data in this report was collected from hospitals, clinics, and schools throughout the region who have agreed to voluntarily submit data.

Definitions

ILI: Influenza-Like Illness. This is an illness that resembles the flu, but has not been confirmed. **Rapid:** These tests are typically done in-house to quickly test for influenza. **PCR:** These tests are generally more precise than rapid tests and are performed at the DSHS state lab and many commercial labs to confirm a case of influenza.

Geographic Spread of Influenza in the Region

No Activity	Sporadic	Local	Regional	Widespread
-------------	----------	-------	----------	------------

Geographic spread is determined using the CDC's guidelines for flu activity: <http://www.cdc.gov/flu/weekly/overview.htm>.

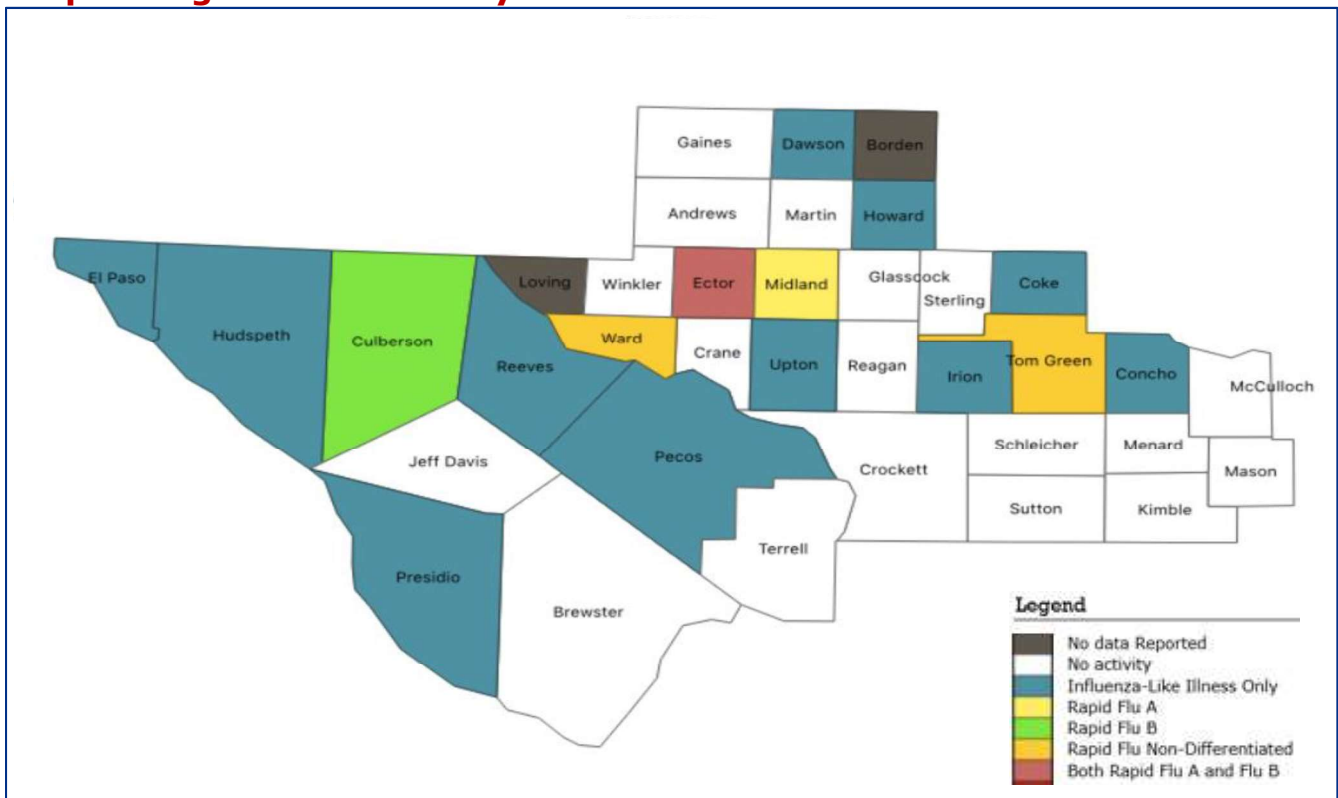
Summary Data

Condition	Week 43	Week 42	Week 41
Number of Counties Reporting (36 total)	↓ 34	35	35
Number of Counties Reporting ILI	↑ 13	12	18
Number of Counties Reporting High Levels of ILI*	↑ 3	1	7
Number of Counties Reporting Flu A	↓ 2	4	3
Number of Counties Reporting Flu B	→ 3	3	1
Number of Counties Reporting Flu A & Flu B	↓ 1	2	1

The arrows represent changes from the previous week. A sideways arrow means there was no change in that condition.

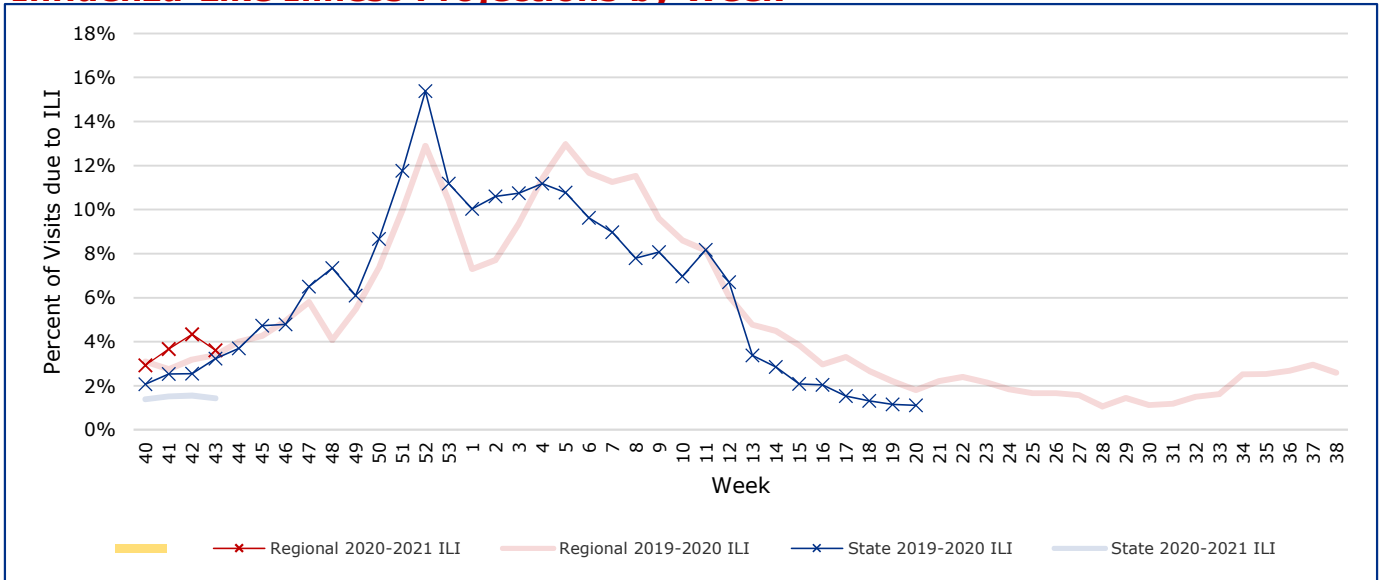
*Counties with total percent of visits due to ILI above 4.0% for the week are considered to have high/abnormal levels.

Map of Regional Flu Activity



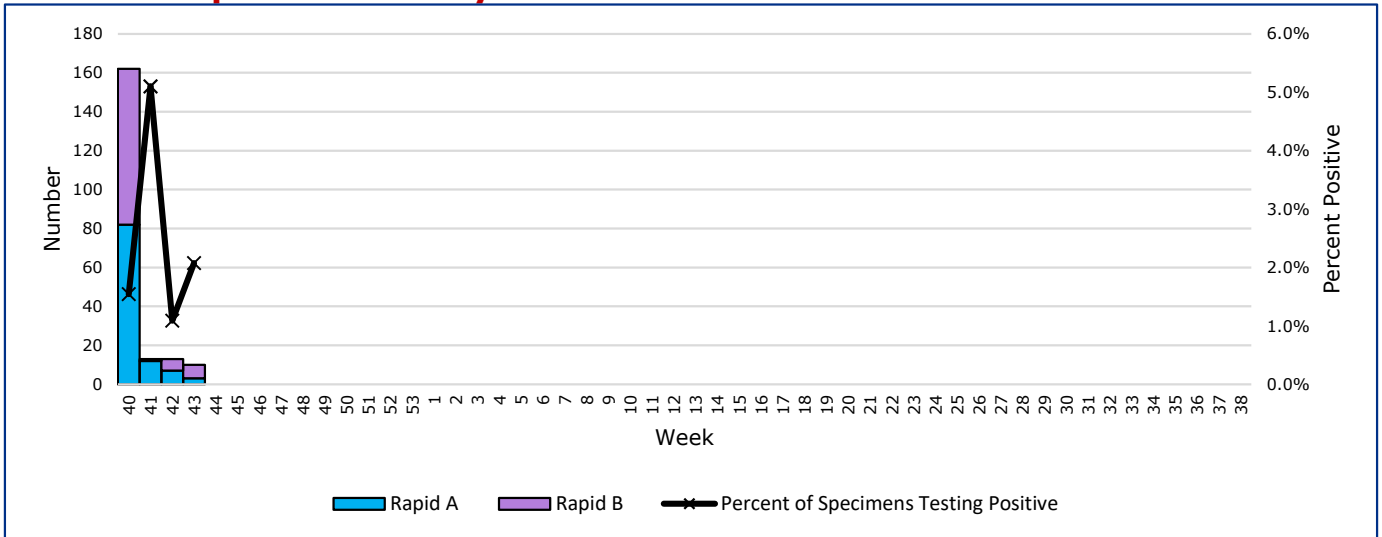
The map above depicts the previous week's reports of flu or influenza-like illness activity in each county. The legend on the bottom right of the map describes the meaning of each color.

Influenza-Like Illness Projections by Week



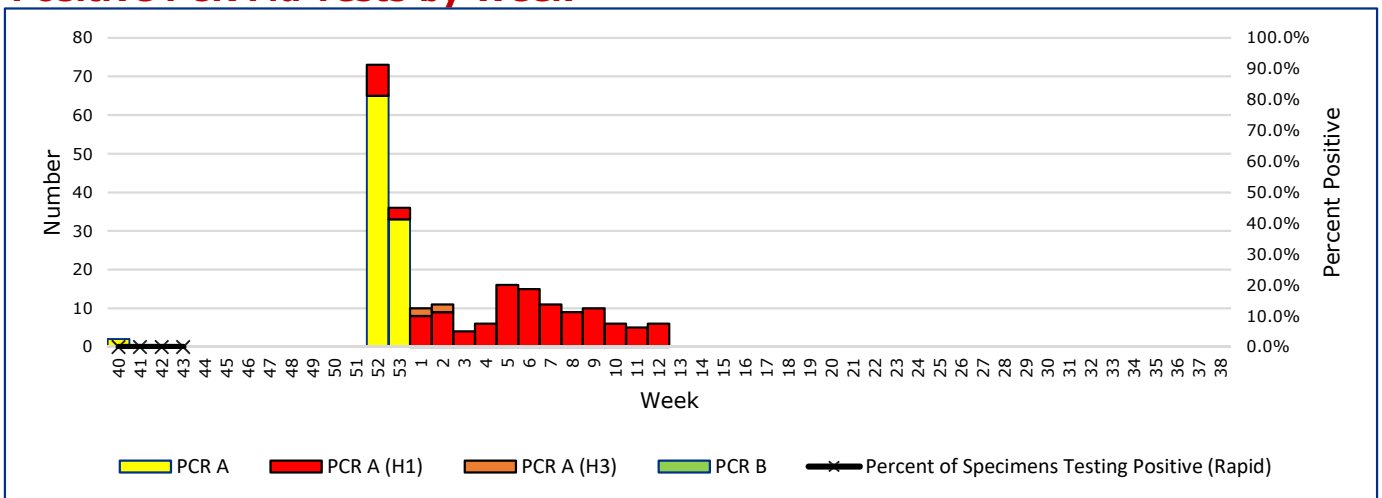
This chart documents the percentage of patient visits that were due to ILI at hospitals and clinics around the region. It compares our region's data with the state's data and also compares to last flu season. Only confirmed COVID-19 cases in PHR 9/10 are included on this graph.

Positive Rapid Flu Tests by Week



This chart documents the number of rapid tests that have come back positive for flu A and flu B each week throughout the region.

Positive PCR Flu Tests by Week



This chart documents the number of PCR tests that have come back positive for flu A and flu B each week throughout the region.

Flu Data by County

County	Week 43				Week 42				Week 41			
	Patient Visits	% with ILI	Flu A	Flu B	Patient Visits	% with ILI	Flu A	Flu B	Patient Visits	% with ILI	Flu A	Flu B
Andrews	484	0%	0	0	537	0%	0	0	623	0%	0	0
Borden	0		0	0	3267	0%	0	0	4	0%	0	0
Brewster	63	0%	0	0	3344	0%	0	0	66	2%	0	0
Coke	56	4%	0	0	3305	3%	0	0	38	5%	0	0
Concho	35	6%	0	0	3312	4%	0	0	417	6%	0	0
Crane	29	0%	0	0	3278	0%	0	0	13	8%	0	0
Crockett	17	0%	0	0	3288	0%	0	0	13	0%	0	0
Culberson	55	0%	2	0	3321	65%	3	2	63	27%	0	0
Dawson	131	2%	0	0	3423	0%	0	0	176	1%	0	0
Ector	4209	4%	1	3	8086	3%	2	0	3622	3%	1	0
El Paso	7836	3%	0	0	10731	3%	2	2	7136	3%	0	0
Gaines	25	0%	0	0	3302	3%	0	0	27	0%	0	0
Glasscock	6	0%	0	0	3270	0%	0	0	6	0%	0	0
Howard	316	2%	0	0	3599	2%	0	0	1096	1%	0	0
Hudspeth	21	5%	0	0	3291	0%	0	0	25	0%	0	0
Irion	28	4%	0	0	3292	0%	0	0	33	0%	0	0
Jeff Davis	7	0%	0	0	3279	0%	0	0	13	0%	0	0
Kimble	299	0%	0	0	3489	0%	0	0	256	0%	0	0
Loving	0		0	0	3266		0	0	0		0	0
McCulloch	104	0%	0	0	3356	0%	0	0	89	0%	0	0
Martin	49	0%	0	0	3681	3%	0	0	39	3%	0	0
Mason	26	0%	0	0	3280	0%	0	0	26	0%	0	0
Menard	12	0%	0	0	3286	0%	0	0	18	0%	0	0
Midland	2161	6%	0	0	6662	8%	0	0	2173	5%	0	0
Pecos	164	4%	0	0	3360	0%	0	0	212	2%	0	0
Presidio	73	10%	0	0	3309	0%	81	0	39	0%	0	0
Reagan	33	0%	0	0	3295	0%	0	0	27	4%	0	0
Reeves	908	6%	0	0	3678	0%	0	0	30	3%	0	0
Schleicher	42	0%	0	0	3317	0%	0	0	28	0%	0	0
Sterling	14	0%	0	0	3284	0%	0	0	19	0%	0	0
Sutton	49	0%	0	0	3300	0%	0	0	40	0%	0	0
Terrell	22	0%	0	0	3280	0%	0	0	11	0%	0	0
Tom Green	2690	3%	0	4	6768	2%	0	2	2737	2%	1	1
Upton	138	51%	0	0	3387	43%	0	0	115	23%	0	0
Ward	456	3%	0	1	5128	10%	0	0	74	1%	0	0
Winkler	20	0%	0	0	4046	7%	0	0	642	22%	10	0
Total	20578	35401.7%	3	8	139097	4.4%	88	6	19946	3.7%	12	1

Flu-Associated Pediatric Deaths & Outbreaks

No flu-associated pediatric deaths have been reported in PHR 9/10 this flu season. No new flu outbreaks were reported for Week 43.