

Weekly Flu Surveillance Report

Public Health Region 9/10

Week 03- January 17- January 23



TEXAS
Health and Human
Services

Texas Department of State
Health Services

Disclaimer

Most cases of influenza are not reportable in the state of Texas, thus the data in this report was collected from hospitals, clinics, and schools throughout the region who have agreed to voluntarily submit data.

Definitions

ILI: Influenza-Like Illness. This is an illness that resembles the flu, but has not been confirmed. **Rapid:** These tests are typically done in-house to quickly test for influenza. **PCR:** These tests are generally more precise than rapid tests and are performed at the DSHS state lab and many commercial labs to confirm a case of influenza.

Geographic Spread of Influenza in the Region

No Activity	Sporadic	Local	Regional	Widespread
-------------	----------	-------	----------	------------

Geographic spread is determined using the CDC's guidelines for flu activity: <http://www.cdc.gov/flu/weekly/overview.htm>.

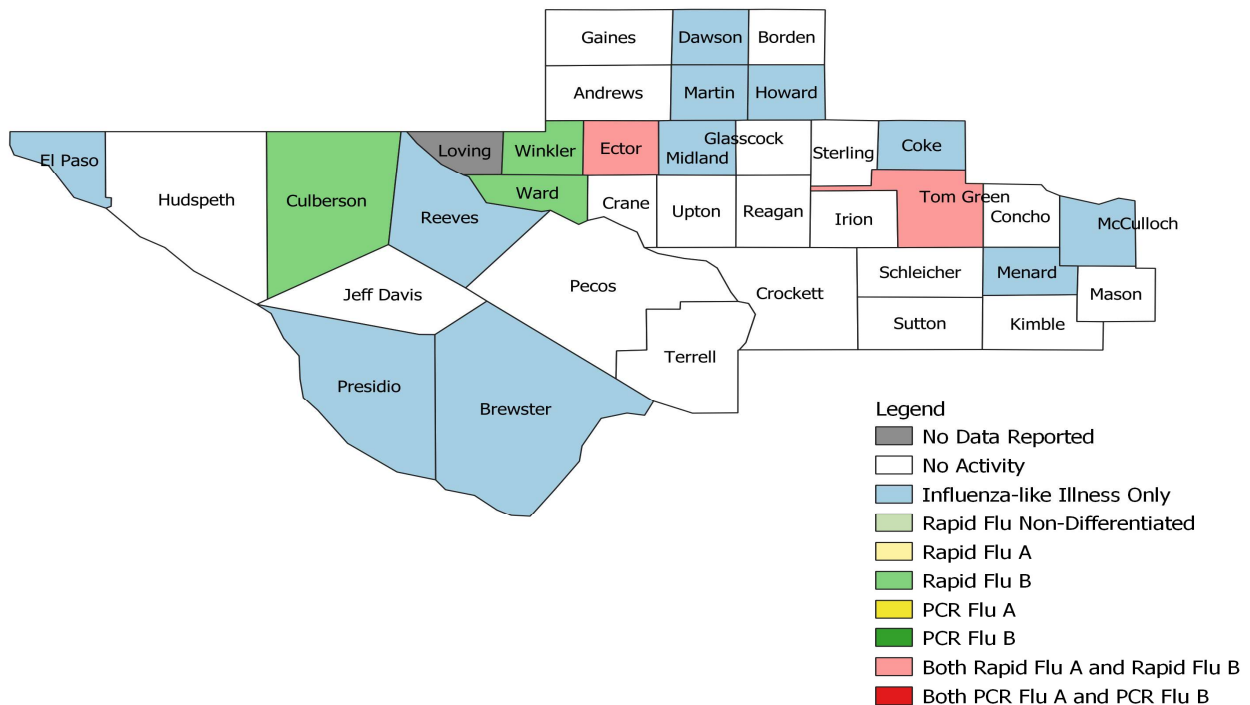
Summary Data

Condition	Week 03	Week 02	Week 01
Number of Counties Reporting (36 total)	↓ 35	36	35
Number of Counties Reporting ILI	→ 14	14	19
Number of Counties Reporting High Levels of ILI*	↑ 3	1	5
Number of Counties Reporting Flu A	↓ 2	3	2
Number of Counties Reporting Flu B	↑ 5	2	2
Number of Counties Reporting Flu A & Flu B	→ 2	2	1

The arrows represent changes from the previous week. A sideways arrow means there was no change in that condition.

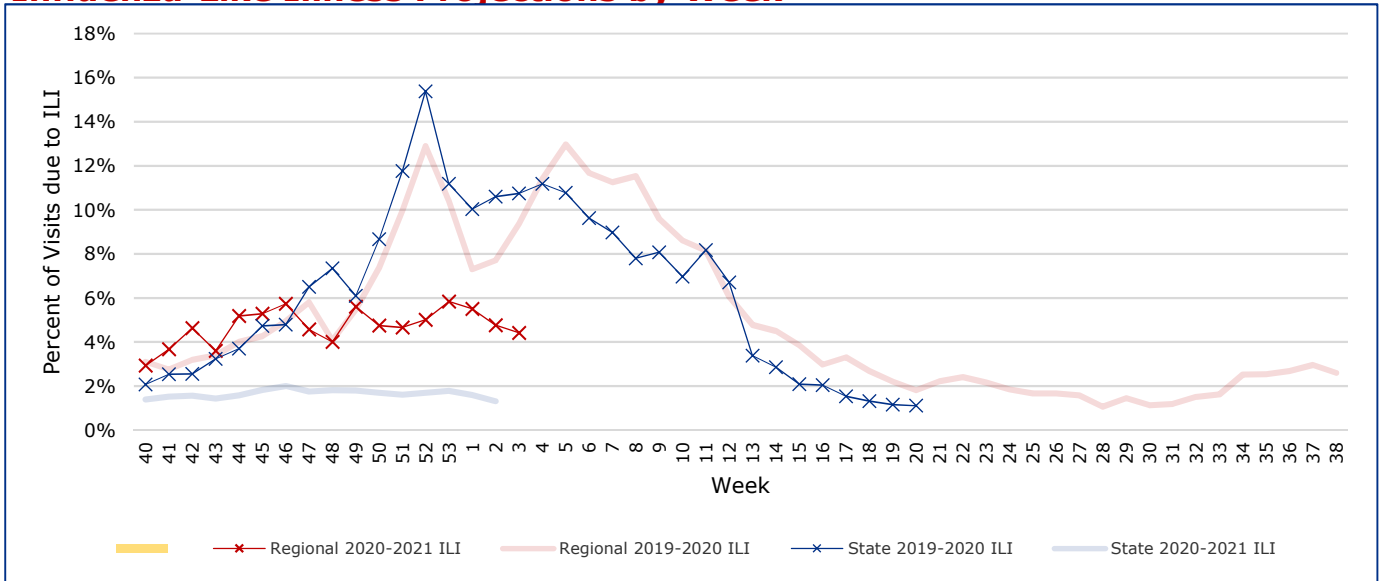
*Counties with total percent of visits due to ILI above 4.0% for the week are considered to have high/abnormal levels.

Map of Regional Flu Activity



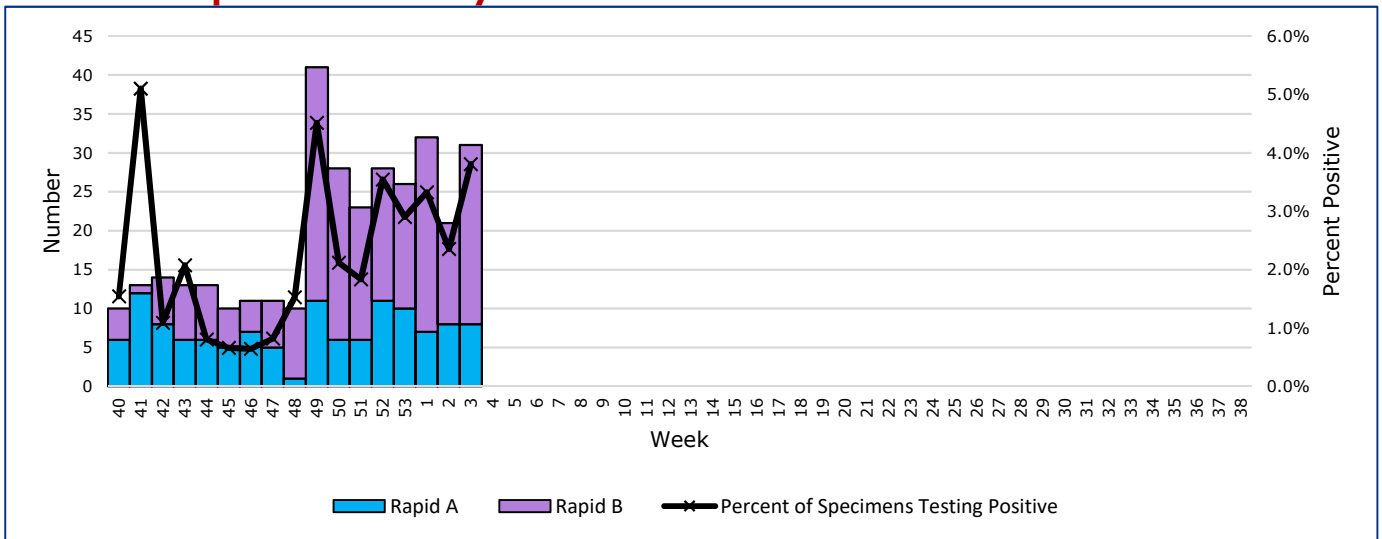
The map above depicts the previous week's reports of flu or influenza-like illness activity in each county. The legend on the bottom right of the map describes the meaning of each color.

Influenza-Like Illness Projections by Week



This chart documents the percentage of patient visits that were due to ILI at hospitals and clinics around the region. It compares our region's data with the state's data and also compares to last flu season. Only confirmed COVID-19 cases in PHR 9/10 are included on this graph.

Positive Rapid Flu Tests by Week



This chart documents the number of rapid tests that have come back positive for flu A and flu B each week throughout the region.

Flu Data by County

County	Week 03				Week 02				Week 01			
	Patient Visits	% with ILI	Flu A	Flu B	Patient Visits	% with ILI	Flu A	Flu B	Patient Visits	% with ILI	Flu A	Flu B
Andrews	501	0%	0	0	512	0%	0	0	24	0%	0	0
Borden	1	0%	0	0	1808	0%	0	0	5	0%	0	0
Brewster	75	3%	0	0	1867	2%	0	0	67	3%	0	0
Coke	39	13%	0	0	1856	4%	0	0	54	4%	0	0
Concho	43	0%	0	0	1849	2%	0	0	46	2%	0	0
Crane	25	0%	0	0	1829	0%	0	0	23	0%	0	0
Crockett	17	0%	0	0	1825	0%	0	0	29	0%	0	0
Culberson	63	37%	0	1	1854	27%	0	0	9	11%	0	0
Dawson	139	1%	0	0	1917	1%	0	0	140	1%	0	0
Ector	3810	10%	7	17	5679	10%	6	12	4340	11%	6	23
El Paso	6094	1%	0	0	7274	2%	0	0	5189	1%	0	0
Gaines	85	0%	0	0	1882	1%	0	0	103	1%	0	0
Glasscock	4	0%	0	0	1807	0%	0	0	4	0%	0	0
Howard	267	2%	0	0	2119	1%	0	0	275	1%	0	0
Hudspeth	21	0%	0	0	1820	0%	0	0	14	0%	0	0
Irion	31	0%	0	0	1829	4%	0	0	16	6%	0	0
Jeff Davis	4	0%	0	0	1822	0%	0	0	13	8%	0	0
Kimble	139	0%	0	0	2042	0%	0	0	168	0%	0	0
Loving	0		0	0	1807	0%	0	0	0		0	0
McCulloch	89	3%	0	0	1893	2%	0	0	90	0%	0	0
Martin	410	14%	0	0	1844	0%	0	0	46	4%	0	0
Mason	31	0%	0	0	1837	0%	0	0	38	3%	0	0
Menard	15	7%	0	0	1815	0%	0	0	19	0%	0	0
Midland	2209	7%	0	0	3936	10%	0	0	2123	12%	0	0
Pecos	664	0%	0	0	2547	0%	1	0	746	0%	0	0
Presidio	74	3%	0	0	2149	2%	0	0	37	0%	0	0
Reagan	28	0%	0	0	1831	0%	0	0	29	0%	0	0
Reeves	23	4%	0	0	2270	1%	0	0	27	4%	0	0
Schleicher	20	0%	0	0	1832	12%	0	0	14	7%	0	0
Sterling	15	0%	0	0	1816	0%	0	0	18	0%	0	0
Sutton	29	0%	0	0	1841	0%	0	0	53	4%	0	0
Terrell	2	0%	0	0	1828	0%	0	0	8	0%	0	0
Tom Green	3618	3%	1	3	5404	2%	1	1	4028	3%	0	2
Upton	29	0%	0	0	1915	12%	0	0	76	13%	0	0
Ward	177	5%	0	1	2010	7%	0	0	87	1%	0	0
Winkler	267	21%	0	1	2162	14%	0	0	318	17%	1	0
Total	19058	4.6%	8	23	82328	4.8%	8	13	18276	5.5%	7	25

Flu-Associated Pediatric Deaths & Outbreaks

No flu-associated pediatric deaths have been reported in PHR 9/10 this flu season. No new flu outbreaks were reported for Week 03.