

Weekly Flu Surveillance Report

Public Health Region 9/10

Week 04- January 24- January 30



TEXAS
Health and Human
Services

Texas Department of State
Health Services

Disclaimer

Most cases of influenza are not reportable in the state of Texas, thus the data in this report was collected from hospitals, clinics, and schools throughout the region who have agreed to voluntarily submit data.

Definitions

ILI: Influenza-Like Illness. This is an illness that resembles the flu, but has not been confirmed. **Rapid:** These tests are typically done in-house to quickly test for influenza. **PCR:** These tests are generally more precise than rapid tests and are performed at the DSHS state lab and many commercial labs to confirm a case of influenza.

Geographic Spread of Influenza in the Region

No Activity	Sporadic	Local	Regional	Widespread
-------------	----------	-------	----------	------------

Geographic spread is determined using the CDC's guidelines for flu activity: <http://www.cdc.gov/flu/weekly/overview.htm>.

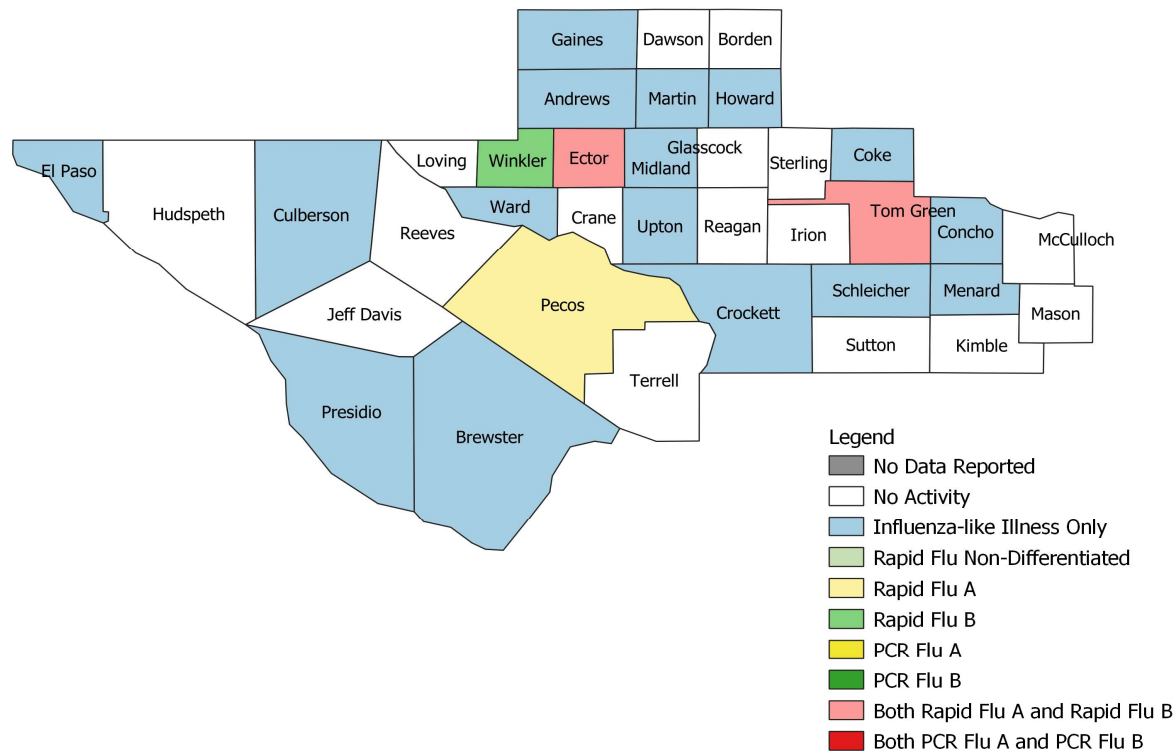
Summary Data

Condition	Week 04	Week 03	Week 02
Number of Counties Reporting (36 total)	↑ 36	35	36
Number of Counties Reporting ILI	↑ 17	14	14
Number of Counties Reporting High Levels of ILI*	↓ 2	3	1
Number of Counties Reporting Flu A	↑ 3	2	3
Number of Counties Reporting Flu B	↓ 3	5	2
Number of Counties Reporting Flu A & Flu B	→ 2	2	2

The arrows represent changes from the previous week. A sideways arrow means there was no change in that condition.

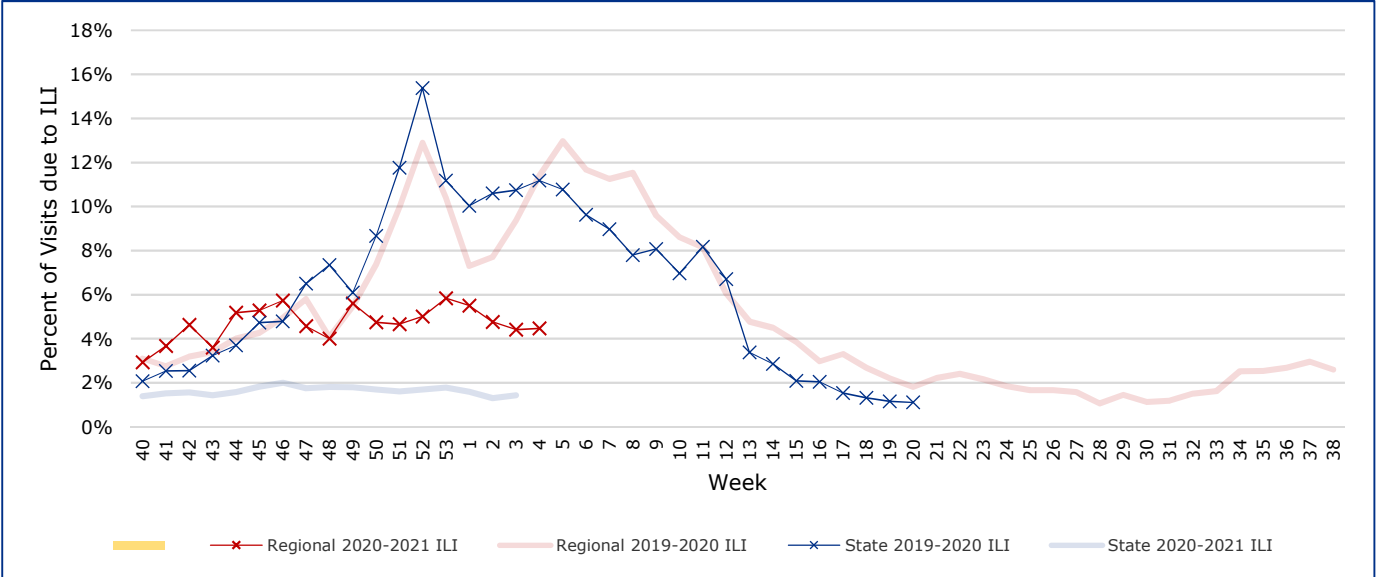
*Counties with total percent of visits due to ILI above 4.0% for the week are considered to have high/abnormal levels.

Map of Regional Flu Activity



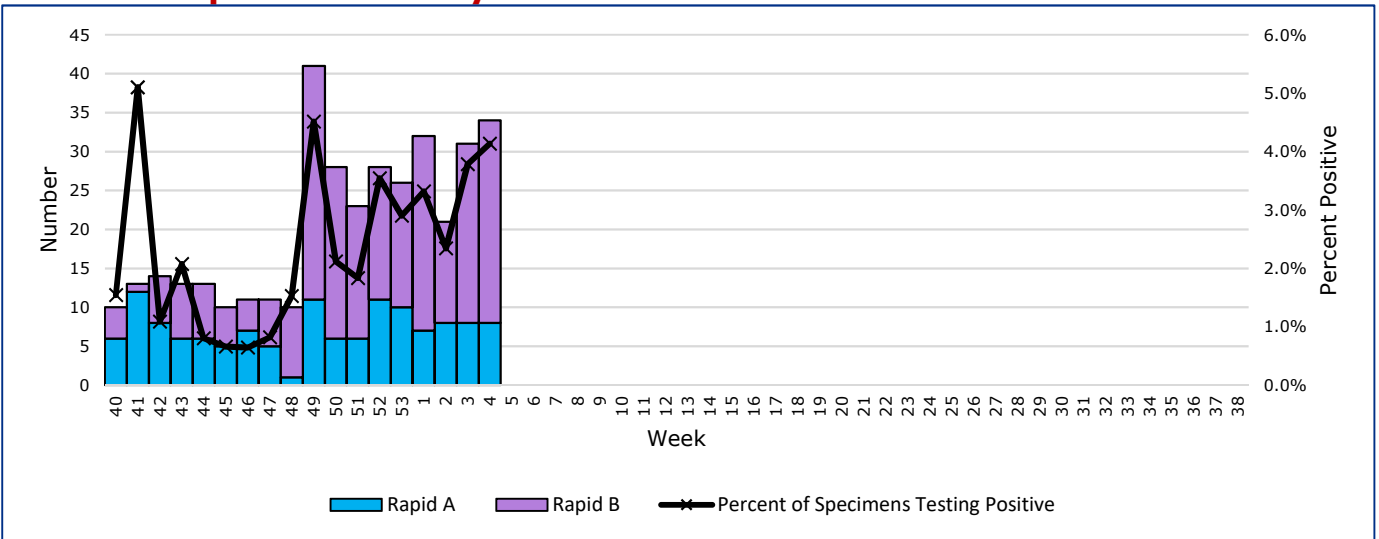
The map above depicts the previous week's reports of flu or influenza-like illness activity in each county. The legend on the bottom right of the map describes the meaning of each color.

Influenza-Like Illness Projections by Week



This chart documents the percentage of patient visits that were due to ILI at hospitals and clinics around the region. It compares our region's data with the state's data and also compares to last flu season. Only confirmed COVID-19 cases in PHR 9/10 are included on this graph.

Positive Rapid Flu Tests by Week



This chart documents the number of rapid tests that have come back positive for flu A and flu B each week throughout the region.

Flu Data by County

County	Week 04				Week 03				Week 02			
	Patient Visits	% with ILI	Flu A	Flu B	Patient Visits	% with ILI	Flu A	Flu B	Patient Visits	% with ILI	Flu A	Flu B
Andrews	480	0%	0	0	501	0%	0	0	512	0%	0	0
Borden	4	0%	0	0	2566	0%	0	0	2	0%	0	0
Brewster	101	1%	0	0	2640	3%	0	0	61	2%	0	0
Coke	53	4%	0	0	2604	13%	0	0	50	4%	0	0
Concho	36	3%	0	0	2608	0%	0	0	43	2%	0	0
Crane	24	0%	0	0	2590	0%	0	0	23	0%	0	0
Crockett	24	4%	0	0	2582	0%	0	0	19	0%	0	0
Culberson	48	27%	0	0	2628	37%	0	1	48	27%	0	0
Dawson	111	0%	0	0	2704	1%	0	0	111	1%	0	0
Ector	3999	11%	6	23	6375	10%	7	17	3873	10%	6	12
El Paso	5853	1%	0	0	8659	1%	0	0	5468	2%	0	0
Gaines	103	1%	0	0	2650	0%	0	0	76	1%	0	0
Glasscock	3	0%	0	0	2569	0%	0	0	1	0%	0	0
Howard	323	2%	0	0	2832	2%	0	0	313	1%	0	0
Hudspeth	16	0%	0	0	2586	0%	0	0	14	0%	0	0
Irion	22	0%	0	0	2596	0%	0	0	23	4%	0	0
Jeff Davis	16	0%	0	0	2569	0%	0	0	16	0%	0	0
Kimble	246	0%	0	0	2704	0%	0	0	236	0%	0	0
Loving	1	0%	0	0	2565		0	0	1	0%	0	0
McCulloch	103	0%	0	0	2654	3%	0	0	87	2%	0	0
Martin	47	2%	0	0	2975	14%	0	0	38	0%	0	0
Mason	47	0%	0	0	2596	0%	0	0	31	0%	0	0
Menard	24	4%	0	0	2580	7%	0	0	9	0%	0	0
Midland	2169	10%	0	0	4774	7%	0	0	2130	10%	0	0
Pecos	838	1%	1	0	3271	1%	0	0	783	1%	1	0
Presidio	88	1%	0	0	2639	3%	0	0	343	0%	0	0
Reagan	43	0%	0	0	2593	0%	0	0	25	0%	0	0
Reeves	23	0%	0	0	2588	4%	0	0	464	1%	0	0
Schleicher	48	4%	0	0	2585	0%	0	0	26	0%	0	0
Sterling	11	0%	0	0	2580	0%	0	0	10	0%	0	0
Sutton	25	0%	0	0	2594	0%	0	0	35	0%	0	0
Terrell	17	0%	0	0	2567	0%	0	0	22	0%	0	0
Tom Green	3793	2%	1	2	6183	3%	1	3	3598	2%	1	1
Upton	109	8%	0	0	2594	0%	0	0	109	11%	0	0
Ward	198	5%	0	0	2742	5%	0	1	204	7%	0	0
Winkler	385	11%	0	1	2832	21%	0	1	356	14%	0	0
Total	19431	4.7%	8	26	108875	4.6%	8	23	19160	4.8%	8	13

Flu-Associated Pediatric Deaths & Outbreaks

No flu-associated pediatric deaths have been reported in PHR 9/10 this flu season. No new flu outbreaks were reported for Week 04.