

Weekly Flu Surveillance Report
Public Health Region 9/10
Week 05- January 31- February 6



Texas Department of State Health Services

Disclaimer

Most cases of influenza are not reportable in the state of Texas, thus the data in this report was collected from hospitals, clinics, and schools throughout the region who have agreed to voluntarily submit data.

Definitions

ILI: Influenza-Like Illness. This is an illness that resembles the flu, but has not been confirmed. **Rapid:** These tests are typically done in-house to quickly test for influenza. **PCR:** These tests are generally more precise than rapid tests and are performed at the DSHS state lab and many commercial labs to confirm a case of influenza.

Geographic Spread of Influenza in the Region

No Activity	Sporadic	Local	Regional	Widespread
-------------	----------	-------	----------	------------

Geographic spread is determined using the CDC's guidelines for flu activity: <http://www.cdc.gov/flu/weekly/overview.htm>.

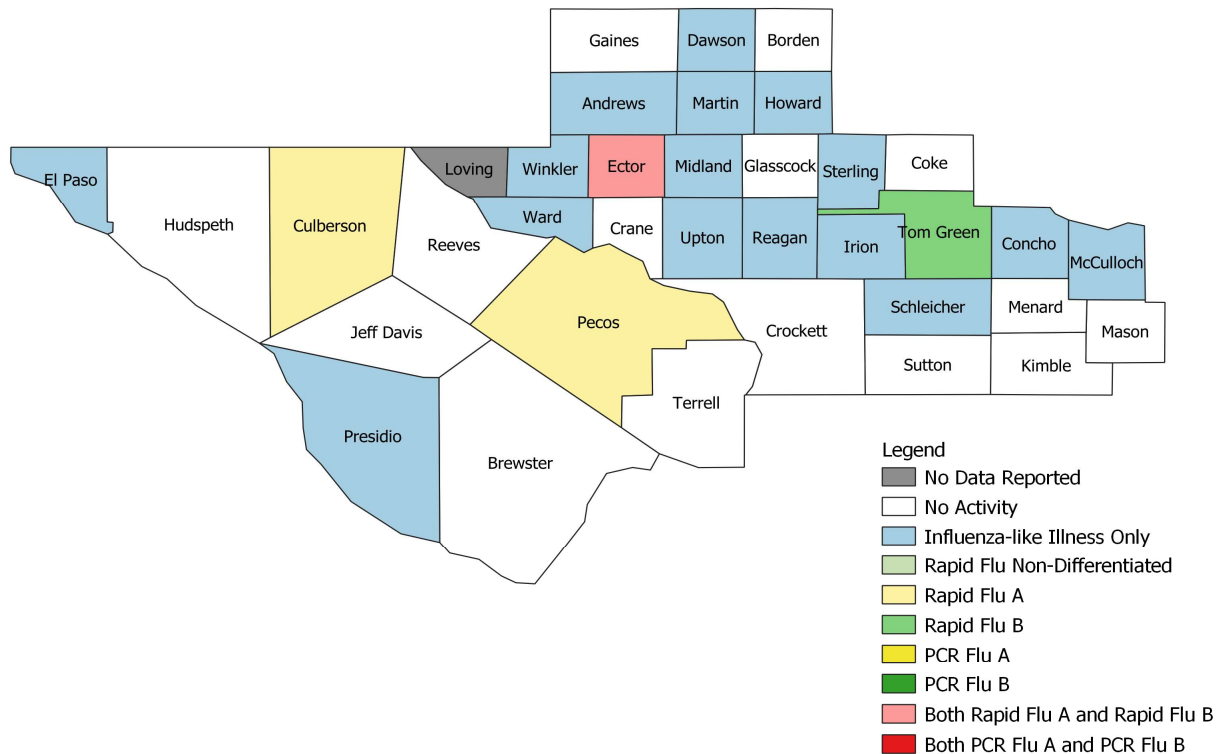
Summary Data

Condition	Week 05	Week 04	Week 03
Number of Counties Reporting (36 total)	↓ 35	36	35
Number of Counties Reporting ILI	↓ 15	17	14
Number of Counties Reporting High Levels of ILI*	↑ 3	2	3
Number of Counties Reporting Flu A	→ 3	3	2
Number of Counties Reporting Flu B	↓ 2	3	5
Number of Counties Reporting Flu A & Flu B	↓ 1	2	2

The arrows represent changes from the previous week. A sideways arrow means there was no change in that condition.

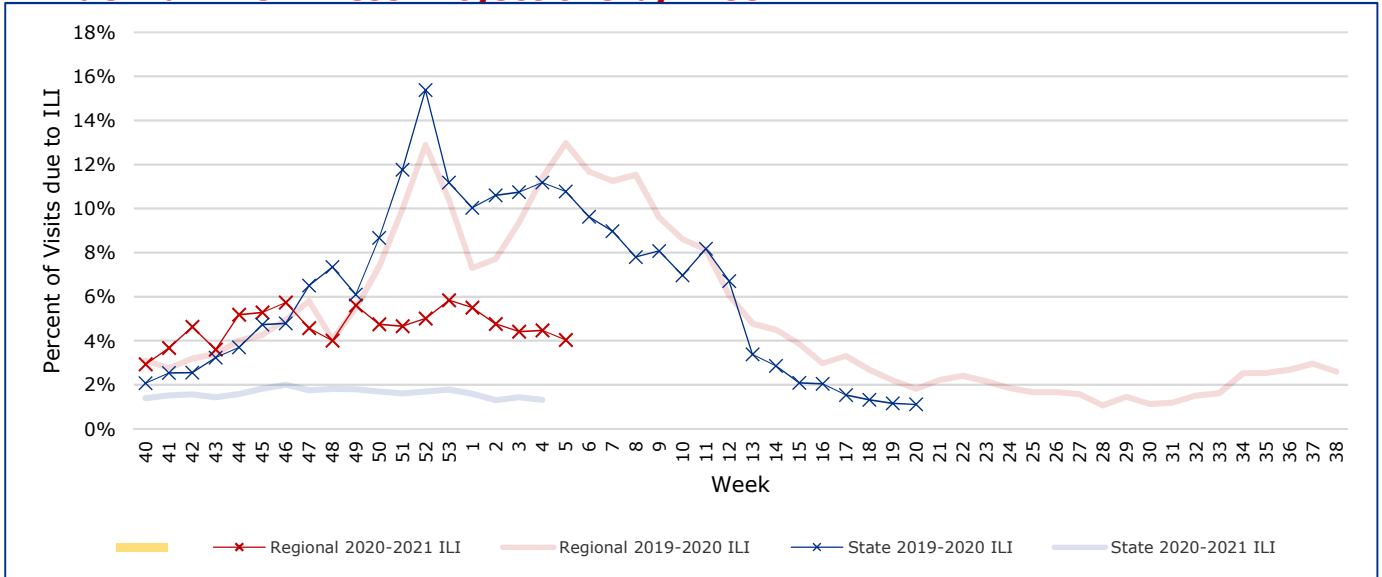
*Counties with total percent of visits due to ILI above 4.0% for the week are considered to have high/abnormal levels.

Map of Regional Flu Activity



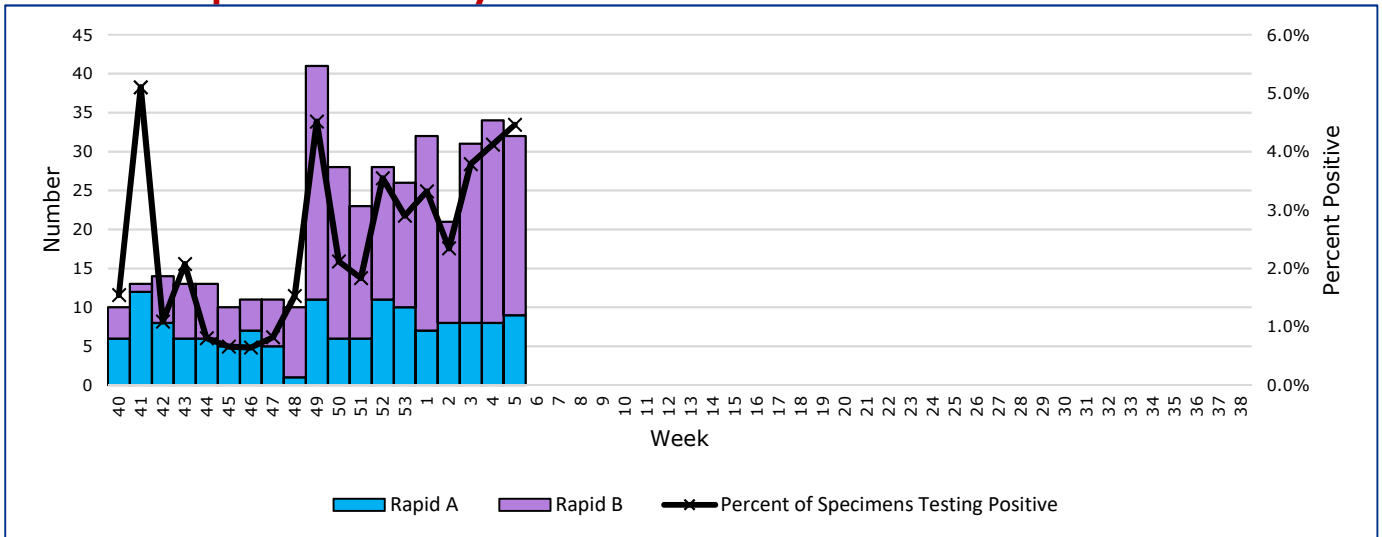
The map above depicts the previous week's reports of flu or influenza-like illness activity in each county. The legend on the bottom right of the map describes the meaning of each color.

Influenza-Like Illness Projections by Week



This chart documents the percentage of patient visits that were due to ILI at hospitals and clinics around the region. It compares our region's data with the state's data and also compares to last flu season. Only confirmed COVID-19 cases in PHR 9/10 are included on this graph.

Positive Rapid Flu Tests by Week



This chart documents the number of rapid tests that have come back positive for flu A and flu B each week throughout the region.

Flu Data by County

County	Week 05				Week 04				Week 03			
	Patient Visits	% with ILI	Flu A	Flu B	Patient Visits	% with ILI	Flu A	Flu B	Patient Visits	% with ILI	Flu A	Flu B
Andrews	513	0%	0	0	480	0%	0	0	501	0%	0	0
Borden	5	0%	0	0	2865	0%	0	0	1	0%	0	0
Brewster	72	0%	0	0	2962	1%	0	0	75	3%	0	0
Coke	50	0%	0	0	2914	4%	0	0	39	13%	0	0
Concho	36	3%	0	0	2897	3%	0	0	43	0%	0	0
Crane	30	0%	0	0	2885	0%	0	0	25	0%	0	0
Crockett	16	0%	0	0	2885	4%	0	0	17	0%	0	0
Culberson	59	27%	1	0	2909	27%	0	0	63	37%	0	1
Dawson	107	1%	0	0	2972	0%	0	0	139	1%	0	0
Ector	4391	9%	5	19	6860	11%	6	23	3810	10%	7	17
El Paso	6134	1%	0	0	8714	1%	0	0	6094	1%	0	0
Gaines	95	0%	0	0	2964	1%	0	0	85	0%	0	0
Glasscock	5	0%	0	0	2864	0%	0	0	4	0%	0	0
Howard	327	1%	0	0	3184	2%	0	0	267	2%	0	0
Hudspeth	20	0%	0	0	2877	0%	0	0	21	0%	0	0
Irion	23	4%	0	0	2883	0%	0	0	31	0%	0	0
Jeff Davis	11	0%	0	0	2877	0%	0	0	4	0%	0	0
Kimble	154	0%	0	0	3107	0%	0	0	139	0%	0	0
Loving	0		0	0	2862	0%	0	0	0		0	0
McCulloch	102	1%	0	0	2964	0%	0	0	89	3%	0	0
Martin	55	5%	0	0	2908	2%	0	0	410	14%	0	0
Mason	25	0%	0	0	2908	0%	0	0	31	0%	0	0
Menard	19	0%	0	0	2885	4%	0	0	15	7%	0	0
Midland	2356	7%	0	0	5030	10%	0	0	2209	7%	0	0
Pecos	802	0%	3	0	3699	1%	1	0	706	1%	0	0
Presidio	57	2%	0	0	2958	1%	0	0	74	3%	0	0
Reagan	40	3%	0	0	2904	0%	0	0	28	0%	0	0
Reeves	23	0%	0	0	2884	0%	0	0	23	4%	0	0
Schleicher	36	3%	0	0	2909	4%	0	0	20	0%	0	0
Sterling	16	6%	0	0	2872	0%	0	0	15	0%	0	0
Sutton	27	0%	0	0	2886	0%	0	0	29	0%	0	0
Terrell	23	0%	0	0	2878	0%	0	0	2	0%	0	0
Tom Green	3477	3%	0	4	6654	2%	1	2	3618	2%	1	3
Upton	138	12%	0	0	2970	8%	0	0	29	0%	0	0
Ward	151	1%	0	0	3059	5%	0	0	177	5%	0	1
Winkler	93	2%	0	0	3246	11%	0	1	267	21%	0	1
Total	19488	3.9%	9	23	119575	4.7%	8	26	19100	4.6%	8	23

Flu-Associated Pediatric Deaths & Outbreaks

No flu-associated pediatric deaths have been reported in PHR 9/10 this flu season. No new flu outbreaks were reported for Week 05.