

**Weekly Flu Surveillance Report**  
**Public Health Region 9/10**  
**Week 06- February 7th- February 13th**



Texas Department of State Health Services

**Disclaimer**

Most cases of influenza are not reportable in the state of Texas, thus the data in this report was collected from hospitals, clinics, and schools throughout the region who have agreed to voluntarily submit data.

**Definitions**

**ILI:** Influenza-Like Illness. This is an illness that resembles the flu, but has not been confirmed. **Rapid:** These tests are typically done in-house to quickly test for influenza. **PCR:** These tests are generally more precise than rapid tests and are performed at the DSHS state lab and many commercial labs to confirm a case of influenza.

**Geographic Spread of Influenza in the Region**

No Activity	Sporadic	Local	Regional	Widespread
-------------	----------	-------	----------	------------

Geographic spread is determined using the CDC's guidelines for flu activity: <http://www.cdc.gov/flu/weekly/overview.htm>.

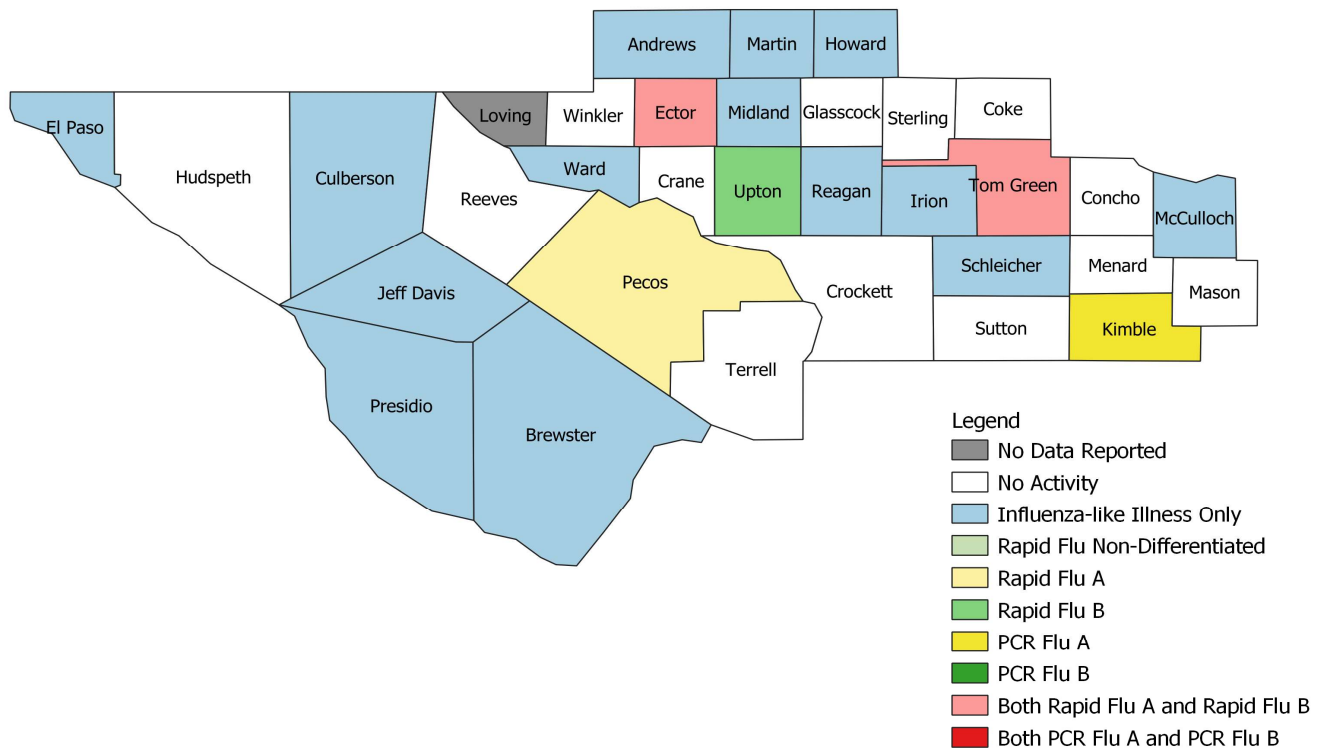
**Summary Data**

Condition	Week 06	Week 05	Week 04
Number of Counties Reporting (36 total)	→ 35	35	36
Number of Counties Reporting ILI	↑ 16	15	17
Number of Counties Reporting High Levels of ILI*	↓ 2	3	2
Number of Counties Reporting Flu A	↑ 4	3	3
Number of Counties Reporting Flu B	↑ 3	2	3
Number of Counties Reporting Flu A & Flu B	↑ 2	1	2

The arrows represent changes from the previous week. A sideways arrow means there was no change in that condition.

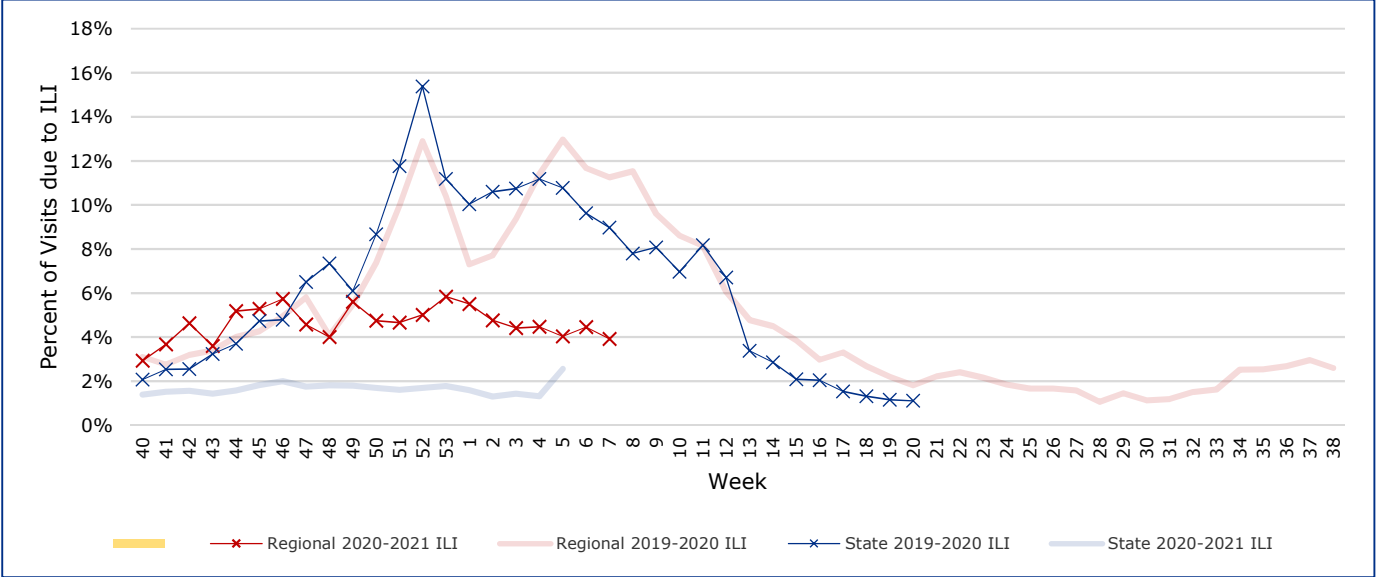
\*Counties with total percent of visits due to ILI above 4.0% for the week are considered to have high/abnormal levels.

**Map of Regional Flu Activity**



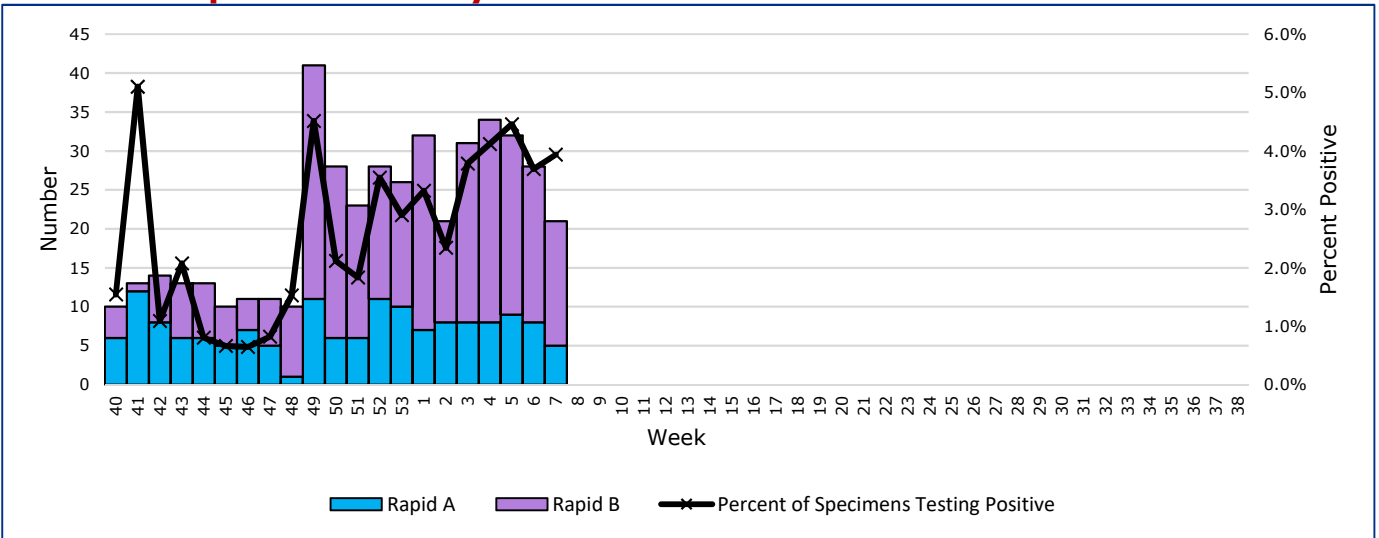
The map above depicts the previous week's reports of flu or influenza-like illness activity in each county. The legend on the bottom right of the map describes the meaning of each color.

## Influenza-Like Illness Projections by Week



This chart documents the percentage of patient visits that were due to ILI at hospitals and clinics around the region. It compares our region's data with the state's data and also compares to last flu season. Only confirmed COVID-19 cases in PHR 9/10 are included on this graph.

## Positive Rapid Flu Tests by Week



This chart documents the number of rapid tests that have come back positive for flu A and flu B each week throughout the region.

## Flu Data by County

County	Week 06				Week 05				Week 04			
	Patient Visits	% with ILI	Flu A	Flu B	Patient Visits	% with ILI	Flu A	Flu B	Patient Visits	% with ILI	Flu A	Flu B
Andrews	29	3%	0	0	513	0%	0	0	480	0%	0	0
Borden	4	0%	0	0	5	0%	0	0	4	0%	0	0
Brewster	70	1%	0	0	72	0%	0	0	101	1%	0	0
Coke	42	0%	0	0	50	0%	0	0	53	4%	0	0
Concho	31	0%	0	0	36	3%	0	0	36	3%	0	0
Crane	27	0%	0	0	30	0%	0	0	24	0%	0	0
Crockett	14	0%	0	0	16	0%	0	0	24	4%	0	0
Culberson	66	15%	0	0	59	27%	1	0	48	27%	0	0
Dawson	116	2%	0	0	107	1%	0	0	111	0%	0	0
Ector	3417	10%	5	18	4391	9%	5	19	3999	11%	6	23
El Paso	5974	1%	0	0	6134	1%	0	0	5853	1%	0	0
Gaines	91	0%	0	0	95	0%	0	0	103	1%	0	0
Glasscock	7	0%	0	0	5	0%	0	0	3	0%	0	0
Howard	298	1%	0	0	327	1%	0	0	323	2%	0	0
Hudspeth	20	0%	0	0	20	0%	0	0	16	0%	0	0
Irion	13	8%	0	0	23	4%	0	0	22	0%	0	0
Jeff Davis	21	5%	0	0	11	0%	0	0	16	0%	0	0
Kimble	217	0%	6	0	154	0%	0	0	246	0%	0	0
Loving	0		0	0	0		0	0	1	0%	0	0
McCulloch	101	3%	0	0	102	1%	0	0	103	0%	0	0
Martin	421	12%	0	0	55	5%	0	0	47	2%	0	0
Mason	26	0%	0	0	25	0%	0	0	47	0%	0	0
Menard	12	0%	0	0	19	0%	0	0	24	4%	0	0
Midland	2103	8%	0	0	2356	7%	0	0	2169	10%	0	0
Pecos	754	0%	2	0	802	0%	3	0	838	1%	1	0
Presidio	99	5%	0	0	57	2%	0	0	97	0%	0	0
Reagan	31	3%	0	0	40	3%	0	0	43	0%	0	0
Reeves	22	0%	0	0	23	0%	0	0	23	0%	0	0
Schleicher	31	3%	0	0	36	3%	0	0	48	2%	0	0
Sterling	7	0%	0	0	16	6%	0	0	11	0%	0	0
Sutton	24	0%	0	0	27	0%	0	0	25	0%	0	0
Terrell	7	0%	0	0	23	0%	0	0	17	0%	0	0
Tom Green	3009	2%	1	1	3477	3%	0	4	3793	2%	1	2
Upton	87	7%	0	1	138	12%	0	0	109	4%	0	0
Ward	196	3%	0	0	151	1%	0	0	198	5%	0	0
Winkler	19	0%	0	0	93	2%	0	0	385	11%	0	1
<b>Total</b>	<b>17406</b>	<b>4.6%</b>	<b>14</b>	<b>20</b>	<b>19488</b>	<b>3.9%</b>	<b>9</b>	<b>23</b>	<b>19440</b>	<b>4.7%</b>	<b>8</b>	<b>26</b>

### Flu-Associated Pediatric Deaths & Outbreaks

No flu-associated pediatric deaths have been reported in PHR 9/10 this flu season. No new flu outbreaks were reported for Week 06.