

Weekly Flu Surveillance Report
 Public Health Region 9/10
 Week 07- February 14th- February 20th



Texas Department of State Health Services

Disclaimer

Most cases of influenza are not reportable in the state of Texas, thus the data in this report was collected from hospitals, clinics, and schools throughout the region who have agreed to voluntarily submit data.

Definitions

ILI: Influenza-Like Illness. This is an illness that resembles the flu, but has not been confirmed. **Rapid:** These tests are typically done in-house to quickly test for influenza. **PCR:** These tests are generally more precise than rapid tests and are performed at the DSHS state lab and many commercial labs to confirm a case of influenza.

Geographic Spread of Influenza in the Region

No Activity	Sporadic	Local	Regional	Widespread
-------------	----------	-------	----------	------------

Geographic spread is determined using the CDC's guidelines for flu activity: <http://www.cdc.gov/flu/weekly/overview.htm>.

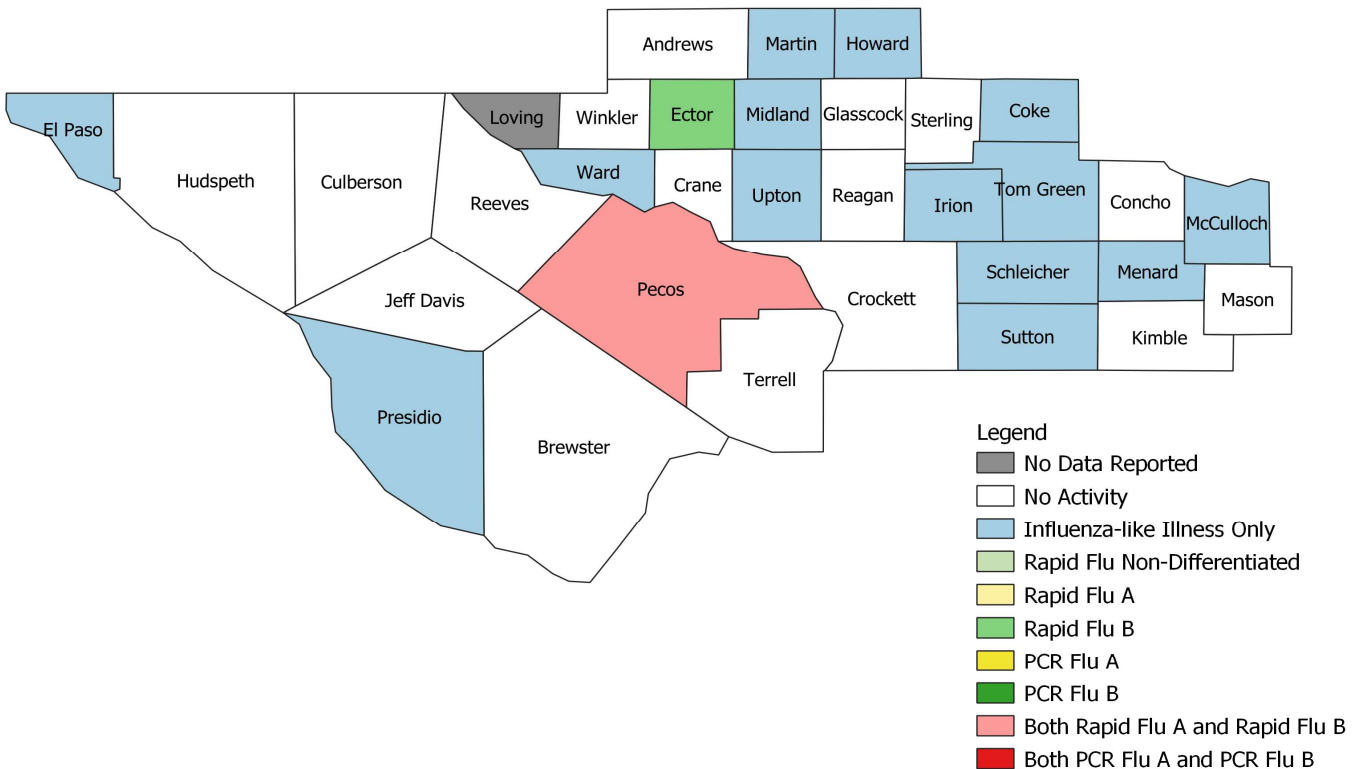
Summary Data

Condition	Week 07	Week 06	Week 05
Number of Counties Reporting (36 total)	➡ 35	35	35
Number of Counties Reporting ILI	⬇ 14	16	15
Number of Counties Reporting High Levels of ILI*	⬆ 4	2	3
Number of Counties Reporting Flu A	⬇ 1	4	3
Number of Counties Reporting Flu B	⬇ 2	3	2
Number of Counties Reporting Flu A & Flu B	⬇ 1	2	1

The arrows represent changes from the previous week. A sideways arrow means there was no change in that condition.

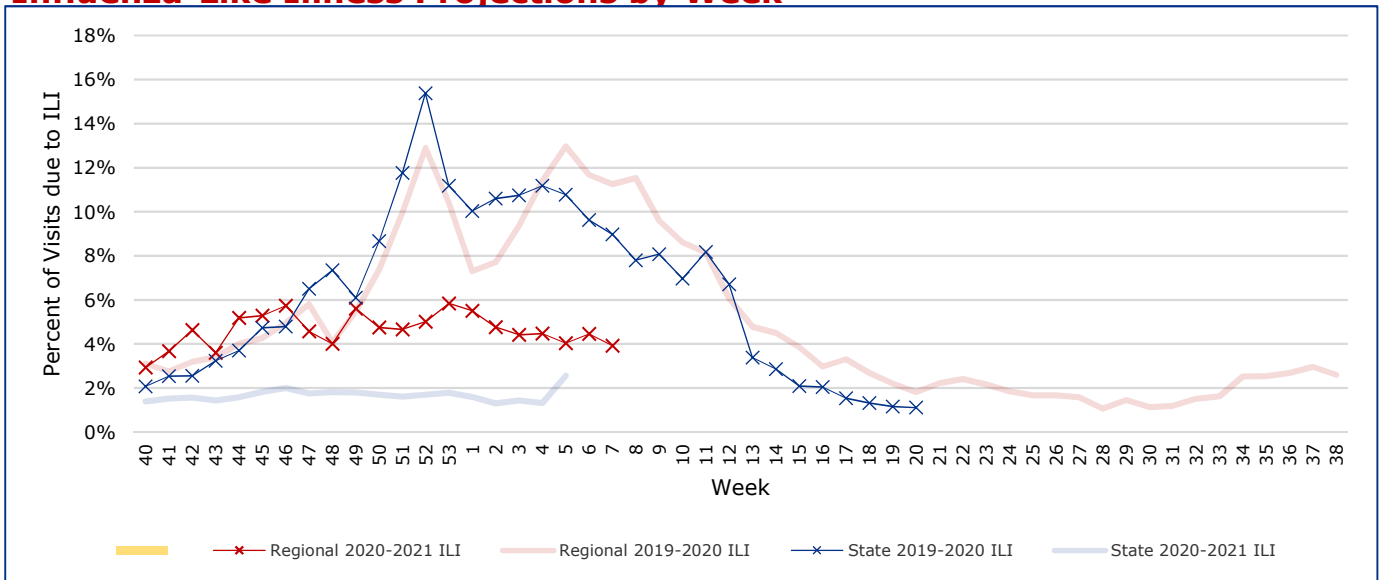
*Counties with total percent of visits due to ILI above 4.0% for the week are considered to have high/abnormal levels.

Map of Regional Flu Activity



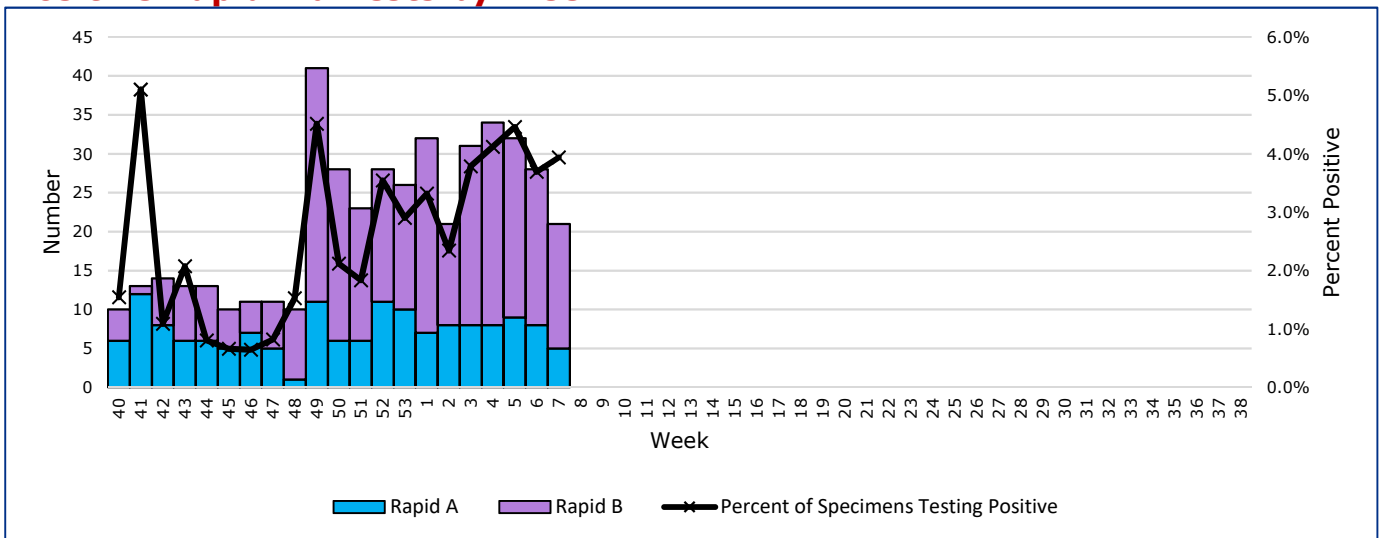
The map above depicts the previous week's reports of flu or influenza-like illness activity in each county. The legend on the bottom right of the map describes the meaning of each color.

Influenza-Like Illness Projections by Week



This chart documents the percentage of patient visits that were due to ILI at hospitals and clinics around the region. It compares our region's data with the state's data and also compares to last flu season. Only confirmed COVID-19 cases in PHR 9/10 are included on this graph.

Positive Rapid Flu Tests by Week



This chart documents the number of rapid tests that have come back positive for flu A and flu B each week throughout the region.

Flu Data by County

County	Week 07				Week 06				Week 05			
	Patient Visits	% with ILI	Flu A	Flu B	Patient Visits	% with ILI	Flu A	Flu B	Patient Visits	% with ILI	Flu A	Flu B
Andrews	15	0%	0	0	29	3%	0	0	513	0%	0	0
Borden	4	0%	0	0	4	0%	0	0	5	0%	0	0
Brewster	82	0%	0	0	70	1%	0	0	72	0%	0	0
Coke	30	7%	0	0	42	0%	0	0	50	0%	0	0
Concho	34	0%	0	0	31	0%	0	0	36	3%	0	0
Crane	32	0%	0	0	27	0%	0	0	30	0%	0	0
Crockett	9	0%	0	0	14	0%	0	0	16	0%	0	0
Culberson	5	0%	0	0	66	15%	0	0	59	27%	1	0
Dawson	120	1%	0	0	116	2%	0	0	107	1%	0	0
Ector	2682	11%	0	15	3417	10%	5	18	4391	9%	5	19
El Paso	6215	1%	0	0	5974	1%	0	0	6134	1%	0	0
Gaines	81	0%	0	0	91	0%	0	0	95	0%	0	0
Glasscock	1	0%	0	0	7	0%	0	0	5	0%	0	0
Howard	269	1%	0	0	298	1%	0	0	327	1%	0	0
Hudspeth	19	0%	0	0	20	0%	0	0	20	0%	0	0
Irion	21	10%	0	0	13	8%	0	0	23	4%	0	0
Jeff Davis	22	0%	0	0	21	5%	0	0	11	0%	0	0
Kimble	149	0%	0	0	217	0%	6	0	154	0%	0	0
Loving	0		0	0	0		0	0	0		0	0
McCulloch	81	1%	0	0	101	3%	0	0	102	1%	0	0
Martin	239	9%	0	0	421	12%	0	0	55	5%	0	0
Mason	41	0%	0	0	26	0%	0	0	25	0%	0	0
Menard	23	4%	0	0	12	0%	0	0	19	0%	0	0
Midland	1882	8%	0	0	2103	8%	0	0	2356	7%	0	0
Pecos	515	0%	5	1	754	0%	2	0	802	0%	3	0
Presidio	90	10%	0	0	99	5%	0	0	57	2%	0	0
Reagan	15	0%	0	0	31	3%	0	0	40	3%	0	0
Reeves	23	0%	0	0	22	0%	0	0	23	0%	0	0
Schleicher	8	13%	0	0	31	3%	0	0	36	3%	0	0
Sterling	8	0%	0	0	7	0%	0	0	16	6%	0	0
Sutton	28	4%	0	0	24	0%	0	0	27	0%	0	0
Terrell	7	0%	0	0	7	0%	0	0	23	0%	0	0
Tom Green	2366	2%	0	0	3009	2%	1	1	3477	3%	0	4
Upton	76	5%	0	0	87	7%	0	1	138	4%	0	0
Ward	83	1%	0	0	196	3%	0	0	151	1%	0	0
Winkler	15	0%	0	0	19	0%	0	0	93	2%	0	0
Total	15290	3.9%	5	16	17406	4.6%	14	20	19488	3.9%	9	23

Flu-Associated Pediatric Deaths & Outbreaks

No flu-associated pediatric deaths have been reported in PHR 9/10 this flu season. No new flu outbreaks were reported for Week 07.