

Weekly Flu Surveillance Report
Public Health Region 9/10
Week 11 - March 14th - March 20th



Texas Department of State Health Services

Disclaimer

Most cases of influenza are not reportable in the state of Texas, thus the data in this report was collected from hospitals, clinics, and schools throughout the region who have agreed to voluntarily submit data.

Definitions

ILI: Influenza-Like Illness. This is an illness that resembles the flu, but has not been confirmed. **Rapid:** These tests are typically done in-house to quickly test for influenza. **PCR:** These tests are generally more precise than rapid tests and are performed at the DSHS state lab and many commercial labs to confirm a case of influenza.

Geographic Spread of Influenza in the Region

No Activity	Sporadic	Local	Regional	Widespread
-------------	----------	-------	----------	------------

Geographic spread is determined using the CDC's guidelines for flu activity: <http://www.cdc.gov/flu/weekly/overview.htm>.

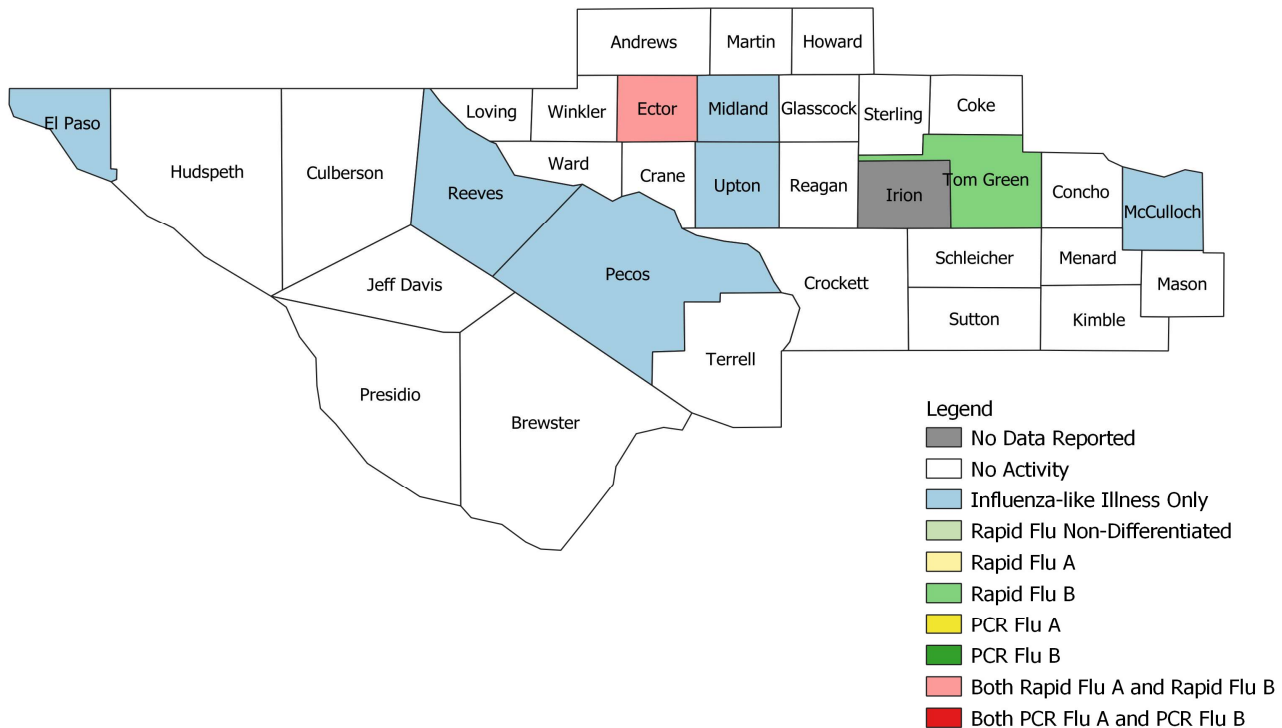
Summary Data

Condition	Week 11	Week 10	Week 09
Number of Counties Reporting (36 total)	↓ 35	36	35
Number of Counties Reporting ILI	↓ 7	13	15
Number of Counties Reporting High Levels of ILI*	↓ 0	1	3
Number of Counties Reporting Flu A	↓ 1	2	2
Number of Counties Reporting Flu B	↑ 2	1	3
Number of Counties Reporting Flu A & Flu B	→ 1	1	1

The arrows represent changes from the previous week. A sideways arrow means there was no change in that condition.

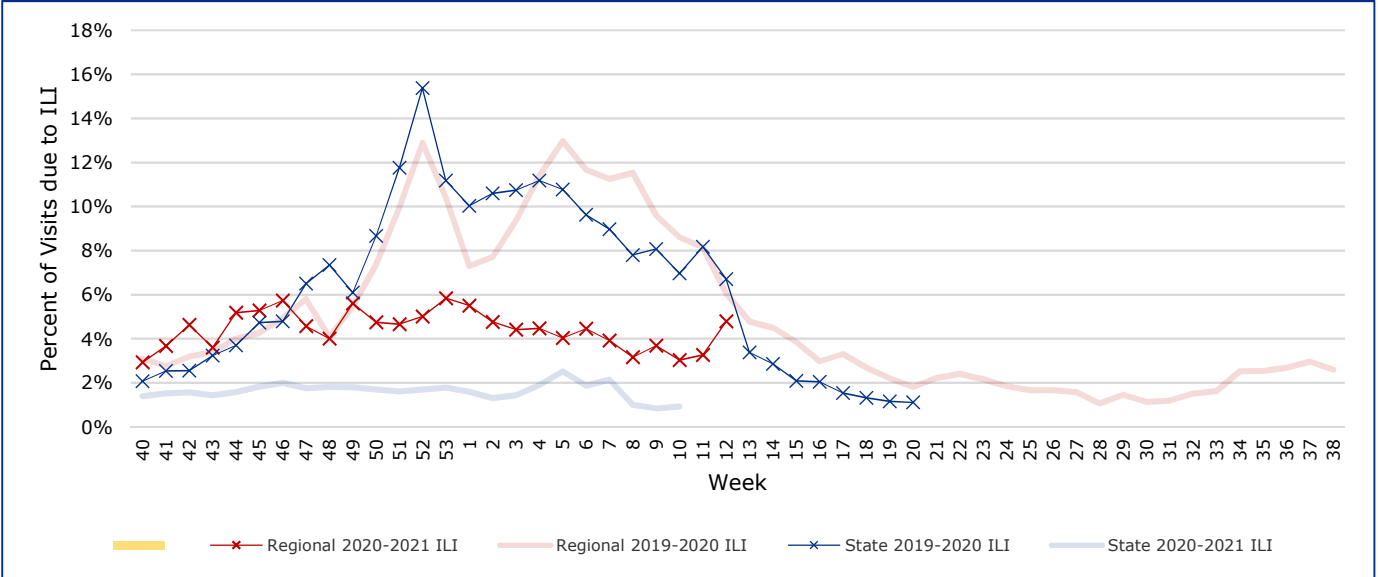
*Counties with total percent of visits due to ILI above 4.0% for the week are considered to have high/abnormal levels.

Map of Regional Flu Activity



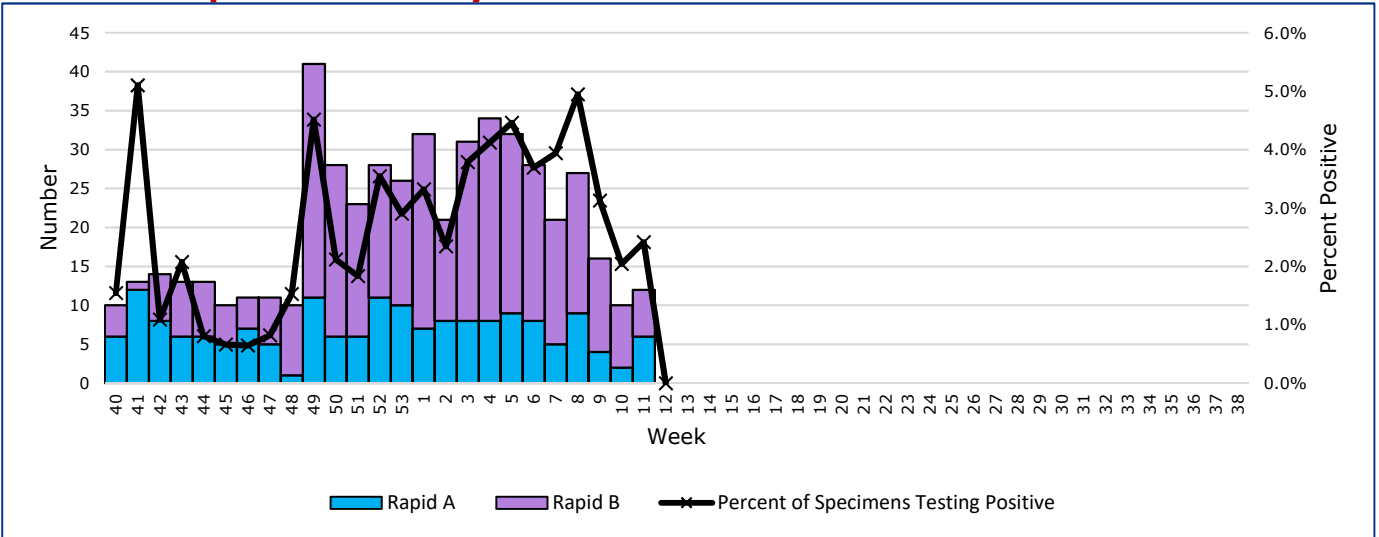
The map above depicts the previous week's reports of flu or influenza-like illness activity in each county. The legend on the bottom right of the map describes the meaning of each color.

Influenza-Like Illness Projections by Week



This chart documents the percentage of patient visits that were due to ILI at hospitals and clinics around the region. It compares our region's data with the state's data and also compares to last flu season. Only confirmed COVID-19 cases in PHR 9/10 are included on this graph.

Positive Rapid Flu Tests by Week



This chart documents the number of rapid tests that have come back positive for flu A and flu B each week throughout the region.

Flu Data by County

County	Week 11				Week 10				Week 09			
	Patient Visits	% with ILI	Flu A	Flu B	Patient Visits	% with ILI	Flu A	Flu B	Patient Visits	% with ILI	Flu A	Flu B
Andrews	42	0%	0	0	427	0%	0	0	29	0%	0	0
Borden	2	0%	0	0	3	0%	0	0	4	0%	0	0
Brewster	76	0%	0	0	70	1%	0	0	77	1%	0	0
Coke	6	0%	0	0	30	0%	0	0	53	2%	0	0
Concho	11	0%	0	0	39	0%	0	0	47	0%	0	0
Crane	19	0%	0	0	29	0%	0	0	38	0%	0	0
Crockett	8	0%	0	0	12	0%	0	0	17	0%	0	0
Culberson	11	0%	0	0	18	0%	0	0	12	0%	0	0
Dawson	131	0%	0	0	141	1%	0	0	132	0%	0	0
Ector	3328	9%	6	5	3273	8%	1	8	3296	8%	2	10
El Paso	6211	1%	0	0	6597	1%	0	0	6127	1%	0	0
Gaines	79	1%	0	0	79	1%	0	0	71	1%	0	0
Glasscock	3	0%	0	0	3	0%	0	0	5	0%	0	0
Howard	299	0%	0	0	324	1%	0	0	308	1%	0	0
Hudspeth	16	0%	0	0	19	0%	0	0	26	0%	0	0
Irion	0		0	0	18	6%	0	0	27	7%	0	0
Jeff Davis	16	0%	0	0	11	0%	0	0	22	0%	0	0
Kimble	109	0%	0	0	246	0%	0	0	16	0%	0	0
Loving	2	0%	0	0	1	0%	0	0	0		0	0
McCulloch	70	3%	0	0	87	1%	0	0	122	2%	0	0
Martin	45	0%	0	0	44	2%	0	0	379	0%	0	0
Mason	24	0%	0	0	32	0%	0	0	30	0%	0	0
Menard	10	0%	0	0	16	0%	0	0	26	0%	0	0
Midland	2052	6%	0	0	2124	5%	0	0	2252	7%	0	0
Pecos	708	0%	0	0	583	0%	0	0	532	0%	2	0
Presidio	35	0%	0	0	36	0%	0	0	113	0%	0	0
Reagan	15	0%	0	0	16	0%	0	0	10	0%	0	0
Reeves	69	1%	0	0	27	0%	0	0	26	0%	0	0
Schleicher	11	0%	0	0	26	4%	0	0	18	6%	0	0
Sterling	1	0%	0	0	6	0%	0	0	20	5%	0	0
Sutton	17	0%	0	0	23	0%	0	0	42	2%	0	0
Terrell	6	0%	0	0	4	0%	0	0	5	0%	0	0
Tom Green	1073	1%	0	1	2560	2%	1	0	2951	2%	0	1
Upton	91	18%	0	0	76	1%	0	0	89	3%	0	1
Ward	107	0%	0	0	99	0%	0	0	97	1%	0	0
Winkler	27	0%	0	0	16	0%	0	0	25	0%	0	0
Total	14730	3.5%	6	6	17115	2.9%	2	8	17044	3.6%	4	12

Flu-Associated Pediatric Deaths & Outbreaks

No flu-associated pediatric deaths have been reported in PHR 9/10 this flu season. No new flu outbreaks were reported for Week 11.