

Weekly Flu Surveillance Report
Public Health Region 9/10
Week 12- March 21st - March 27th



Texas Department of State Health Services

Disclaimer

Most cases of influenza are not reportable in the state of Texas, thus the data in this report was collected from hospitals, clinics, and schools throughout the region who have agreed to voluntarily submit data.

Definitions

ILI: Influenza-Like Illness. This is an illness that resembles the flu, but has not been confirmed. **Rapid:** These tests are typically done in-house to quickly test for influenza. **PCR:** These tests are generally more precise than rapid tests and are performed at the DSHS state lab and many commercial labs to confirm a case of influenza.

Geographic Spread of Influenza in the Region

No Activity	Sporadic	Local	Regional	Widespread
-------------	----------	-------	----------	------------

Geographic spread is determined using the CDC's guidelines for flu activity: <http://www.cdc.gov/flu/weekly/overview.htm>.

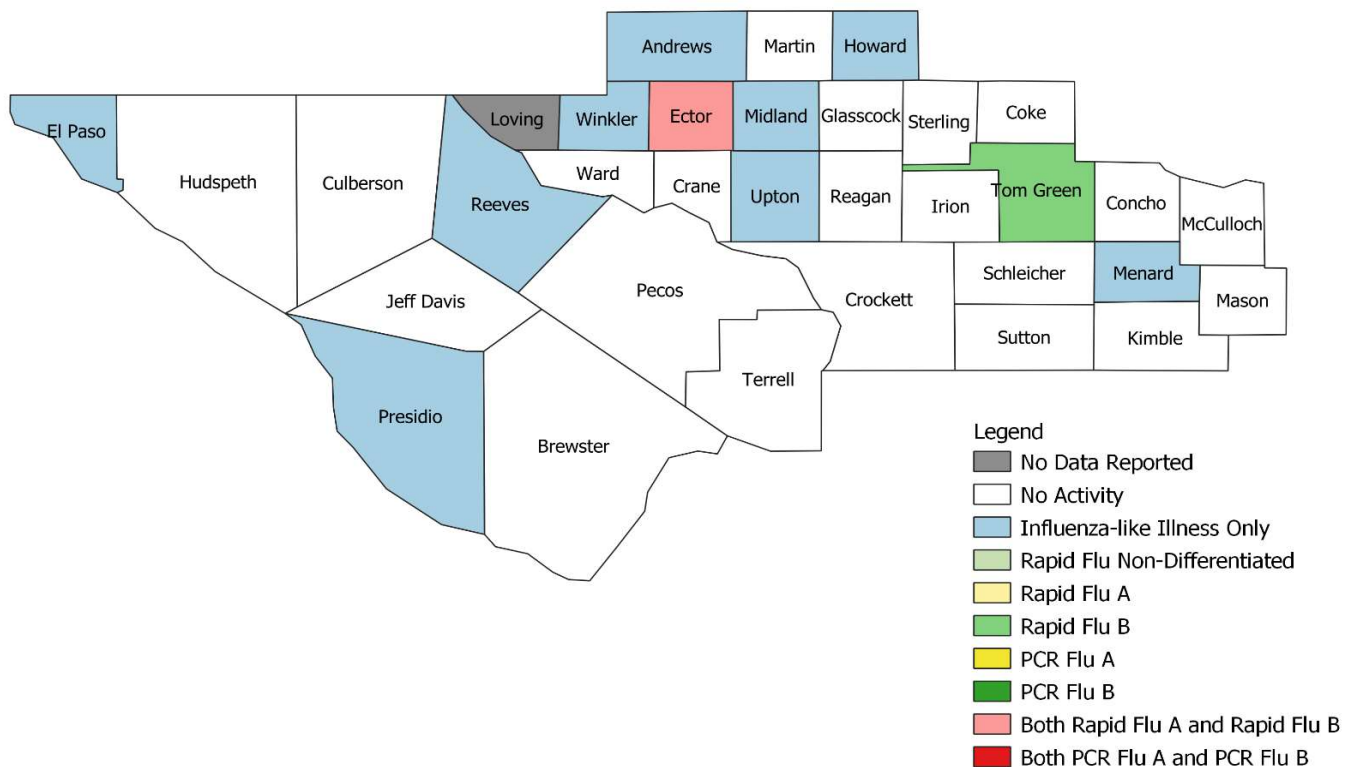
Summary Data

Condition	Week 12	Week 11	Week 10
Number of Counties Reporting (36 total)	→ 35	35	36
Number of Counties Reporting ILI	↑ 10	7	13
Number of Counties Reporting High Levels of ILI*	↑ 2	0	1
Number of Counties Reporting Flu A	→ 1	1	2
Number of Counties Reporting Flu B	→ 2	2	1
Number of Counties Reporting Flu A & Flu B	→ 1	1	1

The arrows represent changes from the previous week. A sideways arrow means there was no change in that condition.

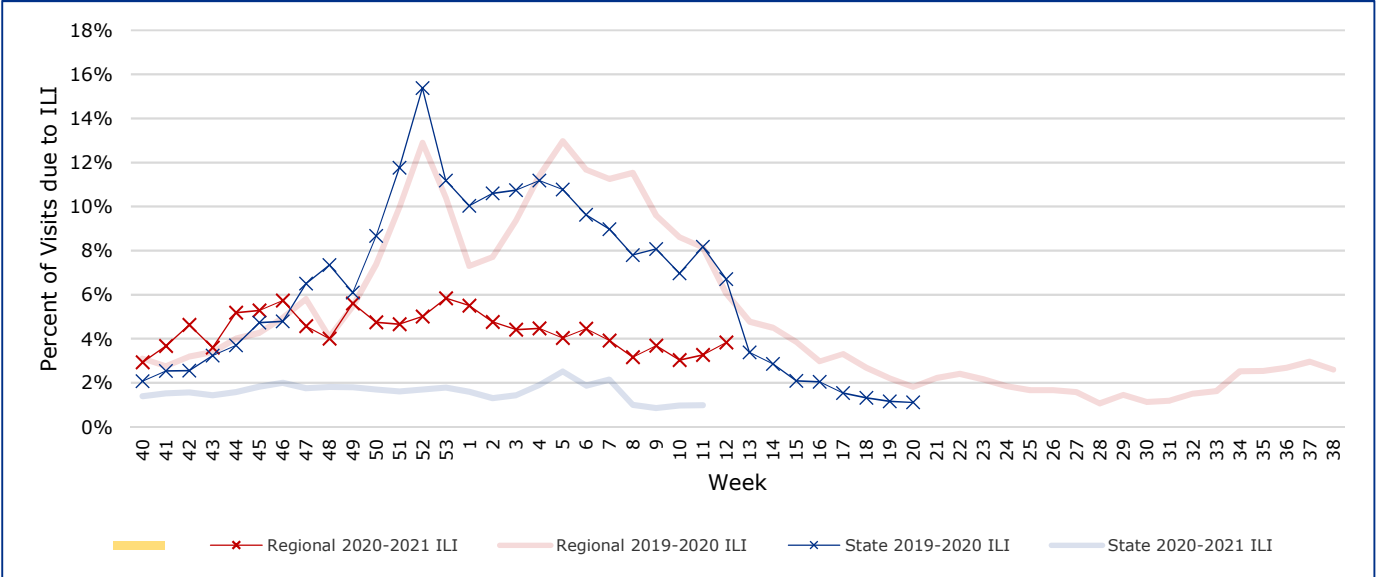
*Counties with total percent of visits due to ILI above 4.0% for the week are considered to have high/abnormal levels.

Map of Regional Flu Activity



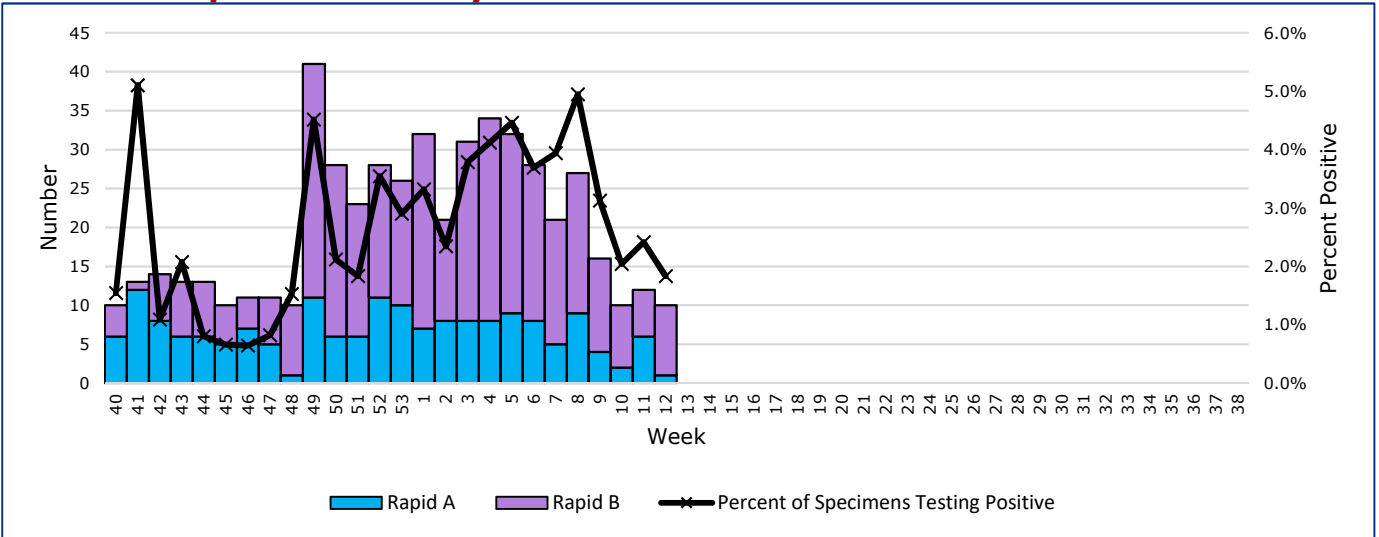
The map above depicts the previous week's reports of flu or influenza-like illness activity in each county. The legend on the bottom right of the map describes the meaning of each color.

Influenza-Like Illness Projections by Week



This chart documents the percentage of patient visits that were due to ILI at hospitals and clinics around the region. It compares our region's data with the state's data and also compares to last flu season. Only confirmed COVID-19 cases in PHR 9/10 are included on this graph.

Positive Rapid Flu Tests by Week



This chart documents the number of rapid tests that have come back positive for flu A and flu B each week throughout the region.

Flu Data by County

County	Week 12				Week 11				Week 10			
	Patient Visits	% with ILI	Flu A	Flu B	Patient Visits	% with ILI	Flu A	Flu B	Patient Visits	% with ILI	Flu A	Flu B
Andrews	445	0%	0	0	42	0%	0	0	427	0%	0	0
Borden	10	0%	0	0	2597	0%	0	0	3	0%	0	0
Brewster	81	0%	0	0	2671	0%	0	0	70	1%	0	0
Coke	4	0%	0	0	2601	0%	0	0	30	0%	0	0
Concho	15	0%	0	0	2606	0%	0	0	39	0%	0	0
Crane	22	0%	0	0	2614	0%	0	0	29	0%	0	0
Crockett	4	0%	0	0	2603	0%	0	0	12	0%	0	0
Culberson	9	0%	0	0	2606	0%	0	0	18	0%	0	0
Dawson	120	0%	0	0	2726	0%	0	0	141	1%	0	0
Ector	3475	10%	1	7	5923	9%	6	5	3273	8%	1	8
El Paso	6781	1%	0	0	8806	1%	0	0	6597	1%	0	0
Gaines	93	0%	0	0	2674	1%	0	0	79	1%	0	0
Glasscock	7	0%	0	0	2598	0%	0	0	3	0%	0	0
Howard	313	0%	0	0	2894	0%	0	0	324	1%	0	0
Hudspeth	17	0%	0	0	2611	0%	0	0	19	0%	0	0
Irion	2	0%	0	0	2595		0	0	18	6%	0	0
Jeff Davis	17	0%	0	0	2611	0%	0	0	11	0%	0	0
Kimble	377	0%	0	0	2704	0%	0	0	246	0%	0	0
Loving	0		0	0	2597	0%	0	0	1	0%	0	0
McCulloch	81	0%	0	0	2665	3%	0	0	87	1%	0	0
Martin	62	0%	0	0	2640	0%	0	0	44	2%	0	0
Mason	21	0%	0	0	2619	0%	0	0	32	0%	0	0
Menard	8	13%	0	0	2605	0%	0	0	16	0%	0	0
Midland	2580	6%	0	0	4647	6%	0	0	2124	5%	0	0
Pecos	125	0%	0	0	3303	0%	0	0	583	0%	0	0
Presidio	39	3%	0	0	2630	0%	0	0	47	0%	0	0
Reagan	14	0%	0	0	2610	0%	0	0	16	0%	0	0
Reeves	116	3%	0	0	2664	1%	0	0	27	0%	0	0
Schleicher	20	0%	0	0	2606	0%	0	0	26	4%	0	0
Sterling	1	0%	0	0	2596	0%	0	0	6	0%	0	0
Sutton	21	0%	0	0	2612	0%	0	0	23	0%	0	0
Terrell	22	0%	0	0	2601	0%	0	0	4	0%	0	0
Tom Green	1152	1%	0	2	3668	1%	0	1	2560	2%	1	0
Upton	85	1%	0	0	2686	18%	0	0	76	0%	0	0
Ward	86	0%	0	0	2702	0%	0	0	99	0%	0	0
Winkler	40	8%	0	0	2622	0%	0	0	16	0%	0	0
Total	16265	3.6%	1	9	105555	3.5%	6	6	17126	2.9%	2	8

Flu-Associated Pediatric Deaths & Outbreaks

No flu-associated pediatric deaths have been reported in PHR 9/10 this flu season. No new flu outbreaks were reported for Week 12.