

**Weekly Flu Surveillance Report**  
**Public Health Region 9/10**  
**Week 13- March 28th - April 3rd**



Texas Department of State Health Services

**Disclaimer**

Most cases of influenza are not reportable in the state of Texas, thus the data in this report was collected from hospitals, clinics, and schools throughout the region who have agreed to voluntarily submit data.

**Definitions**

**ILI:** Influenza-Like Illness. This is an illness that resembles the flu, but has not been confirmed. **Rapid:** These tests are typically done in-house to quickly test for influenza. **PCR:** These tests are generally more precise than rapid tests and are performed at the DSHS state lab and many commercial labs to confirm a case of influenza.

**Geographic Spread of Influenza in the Region**

No Activity	Sporadic	Local	Regional	Widespread
-------------	----------	-------	----------	------------

Geographic spread is determined using the CDC's guidelines for flu activity: <http://www.cdc.gov/flu/weekly/overview.htm>.

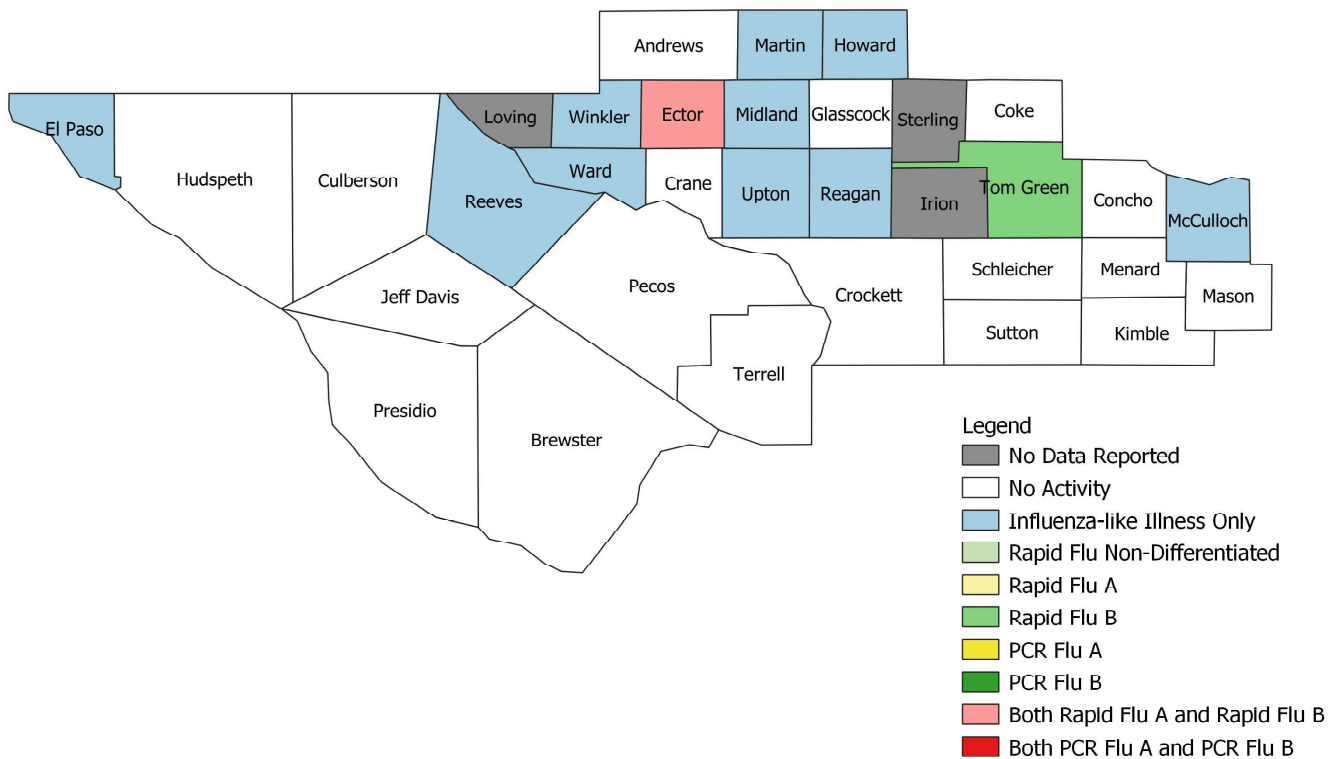
**Summary Data**

Condition	Week 13	Week 12	Week 11
Number of Counties Reporting (36 total)	↓ 33	35	35
Number of Counties Reporting ILI	↑ 11	10	7
Number of Counties Reporting High Levels of ILI*	↑ 2	1	0
Number of Counties Reporting Flu A	→ 1	1	1
Number of Counties Reporting Flu B	→ 2	2	2
Number of Counties Reporting Flu A & Flu B	→ 1	1	1

The arrows represent changes from the previous week. A sideways arrow means there was no change in that condition.

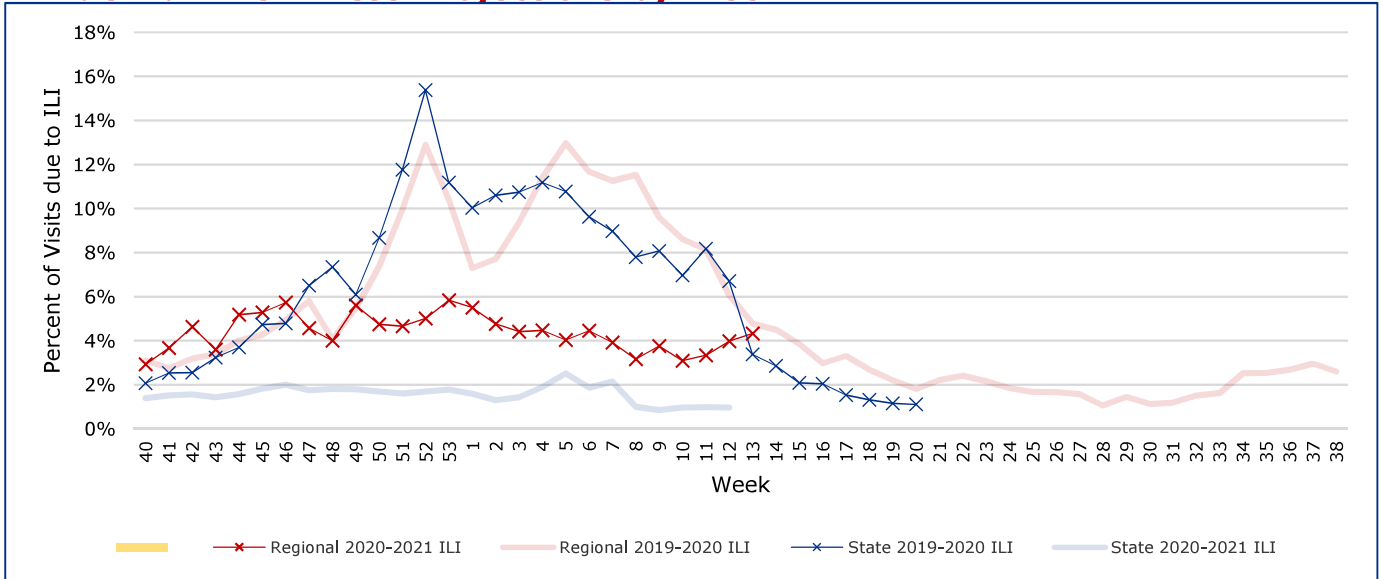
\*Counties with total percent of visits due to ILI above 4.0% for the week are considered to have high/abnormal levels.

**Map of Regional Flu Activity**



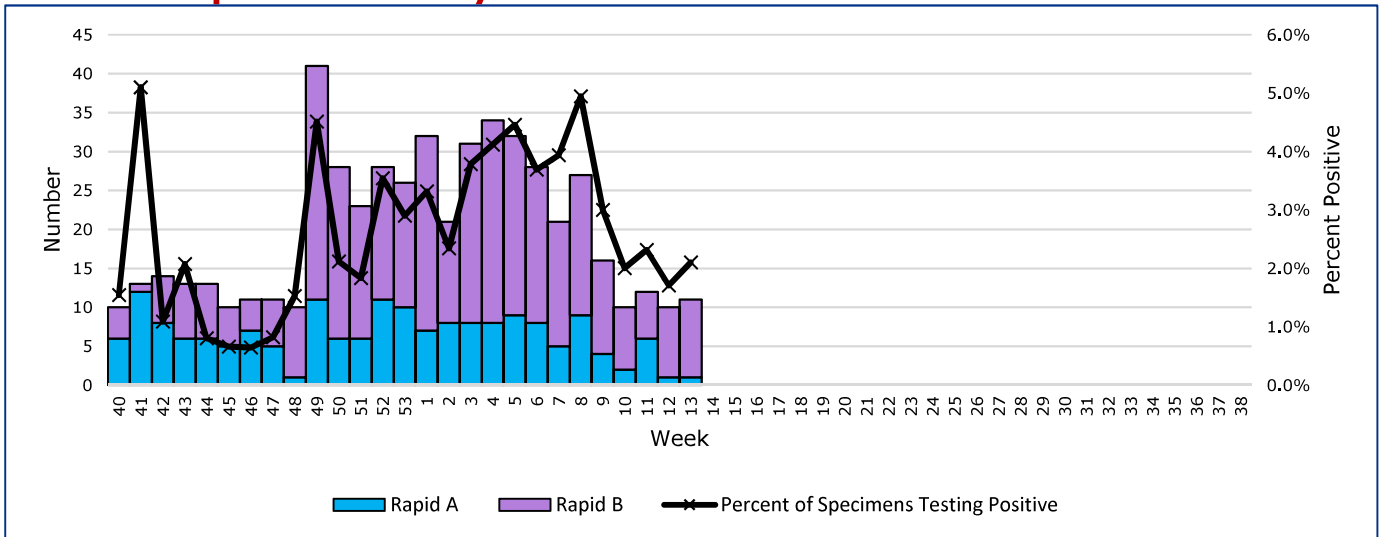
The map above depicts the previous week's reports of flu or influenza-like illness activity in each county. The legend on the bottom right of the map describes the meaning of each color.

## Influenza-Like Illness Projections by Week



This chart documents the percentage of patient visits that were due to ILI at hospitals and clinics around the region. It compares our region's data with the state's data and also compares to last flu season. Only confirmed COVID-19 cases in PHR 9/10 are included on this graph.

## Positive Rapid Flu Tests by Week



This chart documents the number of rapid tests that have come back positive for flu A and flu B each week throughout the region.

## Flu Data by County

County	Week 13				Week 12				Week 11			
	Patient Visits	% with ILI	Flu A	Flu B	Patient Visits	% with ILI	Flu A	Flu B	Patient Visits	% with ILI	Flu A	Flu B
Andrews	412	0%	0	0	445	0%	0	0	42	0%	0	0
Borden	2	0%	0	0	10	0%	0	0	2	0%	0	0
Brewster	79	0%	0	0	81	0%	0	0	76	0%	0	0
Coke	3	0%	0	0	4	0%	0	0	6	0%	0	0
Concho	14	0%	0	0	15	0%	0	0	11	0%	0	0
Crane	34	0%	0	0	22	0%	0	0	19	0%	0	0
Crockett	5	0%	0	0	4	0%	0	0	8	0%	0	0
Culberson	11	0%	0	0	9	0%	0	0	11	0%	0	0
Dawson	130	0%	0	0	120	0%	0	0	131	0%	0	0
Ector	3244	10%	1	6	3475	10%	1	7	3328	9%	6	5
El Paso	6455	2%	0	0	6781	1%	0	0	6211	1%	0	0
Gaines	116	2%	0	0	93	0%	0	0	79	1%	0	0
Glasscock	2	0%	0	0	7	0%	0	0	3	0%	0	0
Howard	334	2%	0	0	313	0%	0	0	299	0%	0	0
Hudspeth	21	0%	0	0	17	0%	0	0	16	0%	0	0
Irion	0		0	0	2	0%	0	0	0		0	0
Jeff Davis	13	0%	0	0	17	0%	0	0	16	0%	0	0
Kimble	137	0%	0	0	377	0%	0	0	109	0%	0	0
Loving	0		0	0	0		0	0	2	0%	0	0
McCulloch	85	1%	0	0	81	0%	0	0	70	3%	0	0
Martin	44	5%	0	0	62	0%	0	0	45	0%	0	0
Mason	32	0%	0	0	21	0%	0	0	24	0%	0	0
Menard	7	0%	0	0	8	13%	0	0	10	0%	0	0
Midland	2546	7%	0	0	2580	6%	0	0	2052	6%	0	0
Pecos	115	0%	0	0	125	0%	0	0	708	0%	0	0
Presidio	43	0%	0	0	64	9%	0	0	35	0%	0	0
Reagan	18	6%	0	0	14	0%	0	0	15	0%	0	0
Reeves	133	2%	0	0	116	3%	0	0	69	1%	0	0
Schleicher	11	0%	0	0	20	0%	0	0	11	0%	0	0
Sterling	0		0	0	1	0%	0	0	1	0%	0	0
Sutton	22	0%	0	0	21	0%	0	0	17	0%	0	0
Terrell	35	0%	0	0	22	0%	0	0	6	0%	0	0
Tom Green	1096	1%	0	4	1152	1%	0	2	1073	1%	0	1
Upton	116	2%	0	0	114	2%	0	0	91	14%	0	0
Ward	98	2%	0	0	86	0%	0	0	107	0%	0	0
Winkler	287	13%	0	0	344	10%	0	0	323	7%	0	0
<b>Total</b>	<b>15700</b>	<b>4.2%</b>	<b>1</b>	<b>10</b>	<b>16623</b>	<b>3.8%</b>	<b>1</b>	<b>9</b>	<b>15026</b>	<b>3.6%</b>	<b>6</b>	<b>6</b>

## Flu-Associated Pediatric Deaths & Outbreaks

No flu-associated pediatric deaths have been reported in PHR 9/10 this flu season. No new flu outbreaks were reported for Week 13.