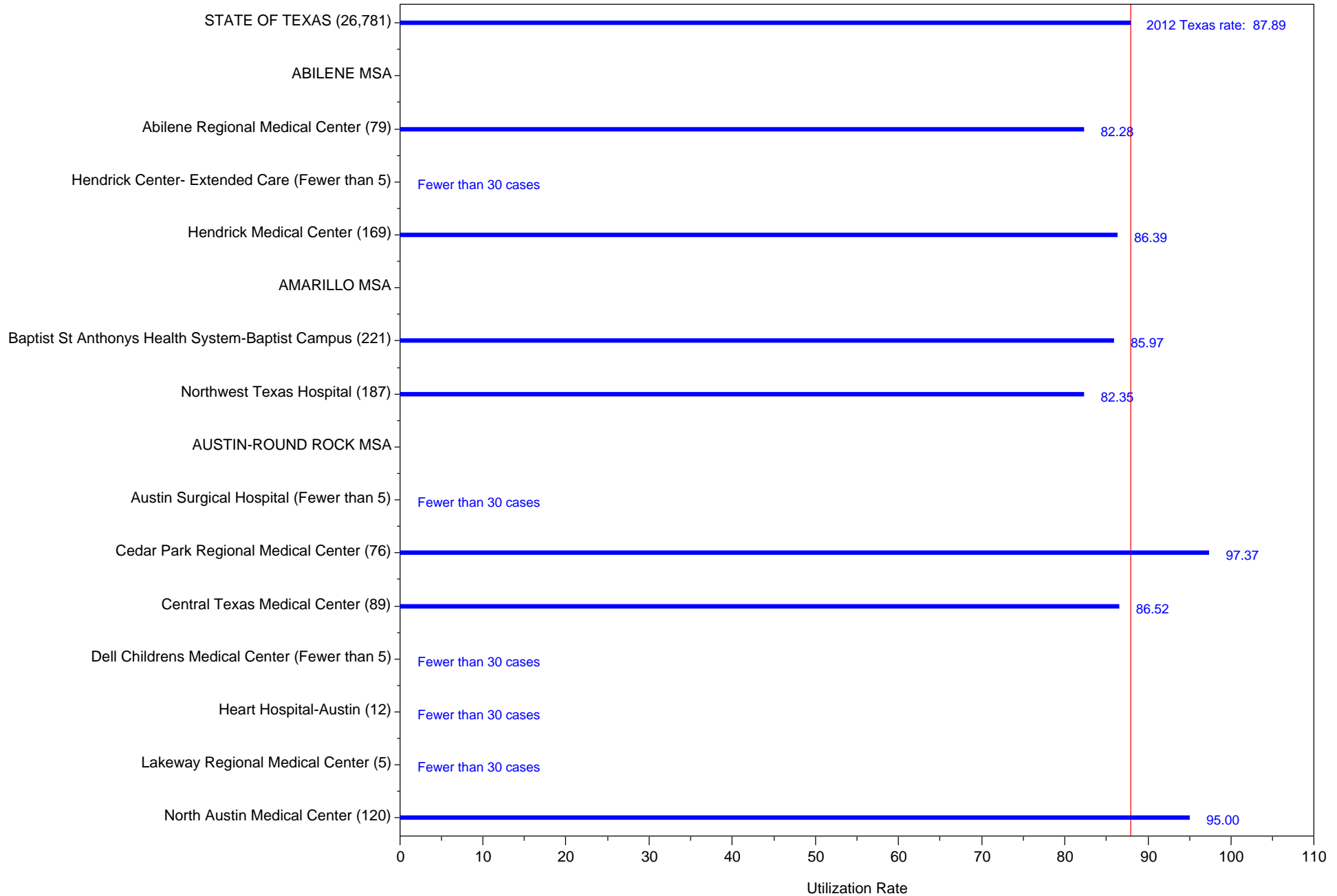


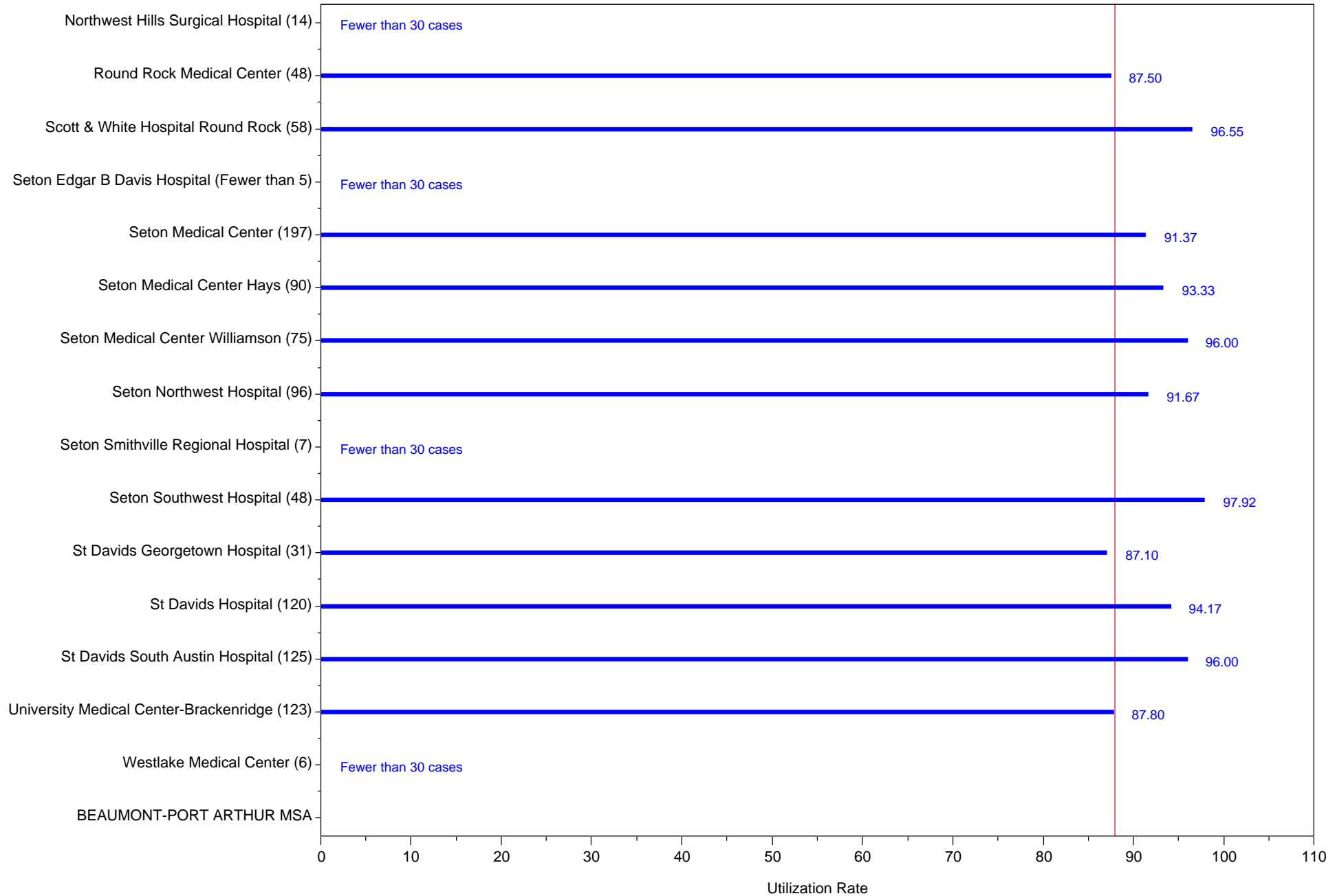
Laparoscopic Cholecystectomy Rate, 2012

Better quality may be associated with higher rates
 (C) Comment submitted by hospital
 page=1



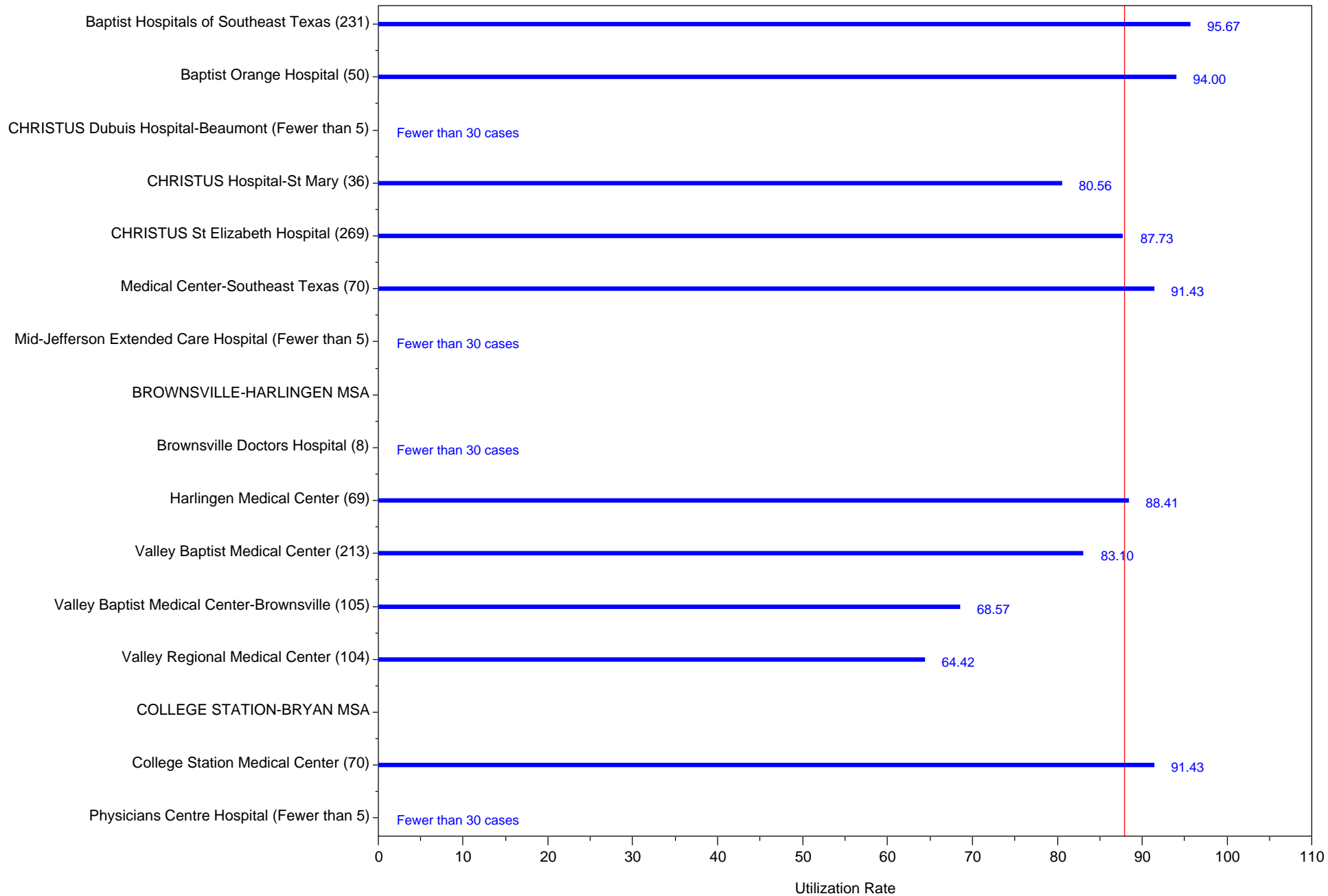
Laparoscopic Cholecystectomy Rate, 2012

Better quality may be associated with higher rates
 (C) Comment submitted by hospital
 page=2



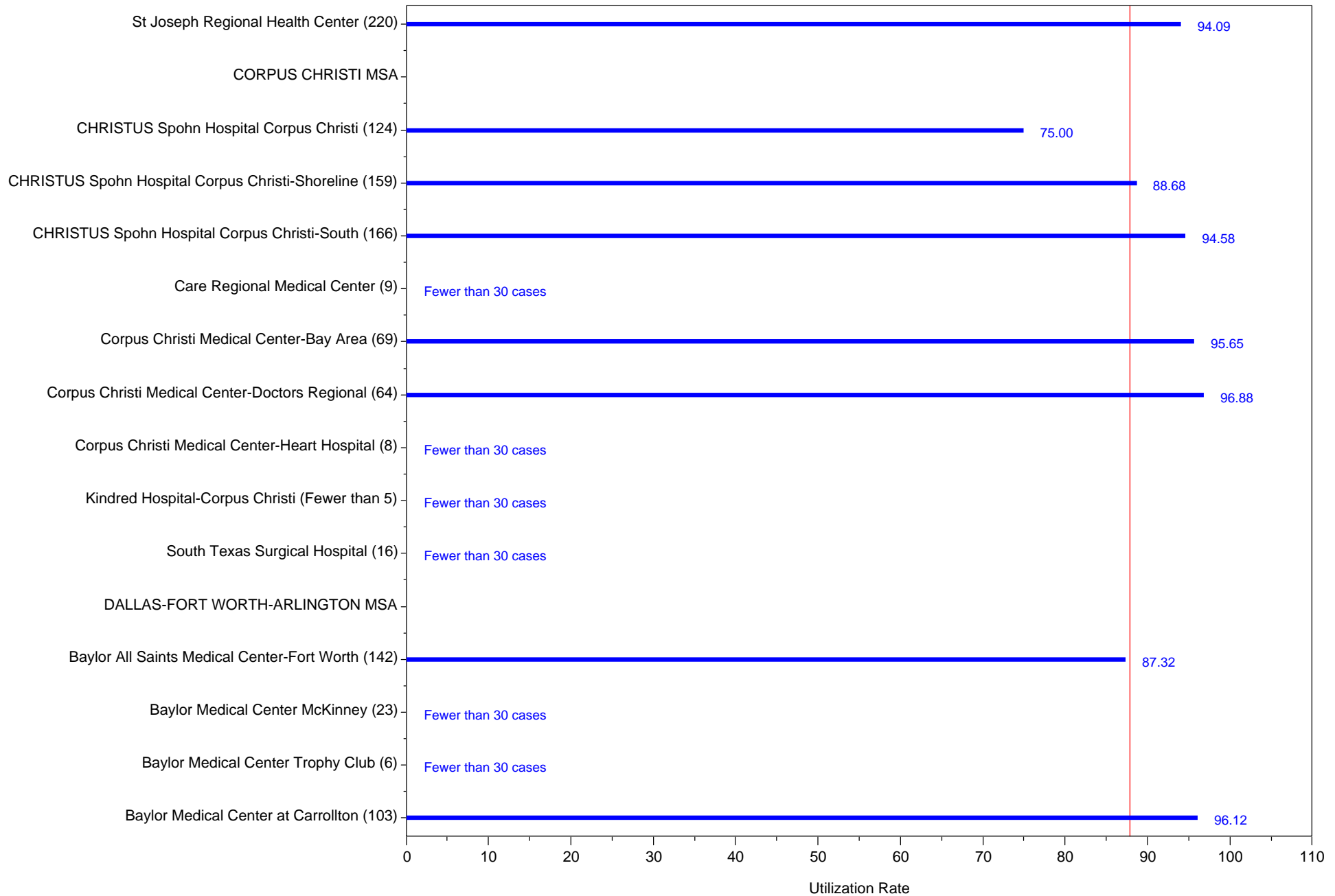
Laparoscopic Cholecystectomy Rate, 2012

Better quality may be associated with higher rates
 (C) Comment submitted by hospital
 page=3



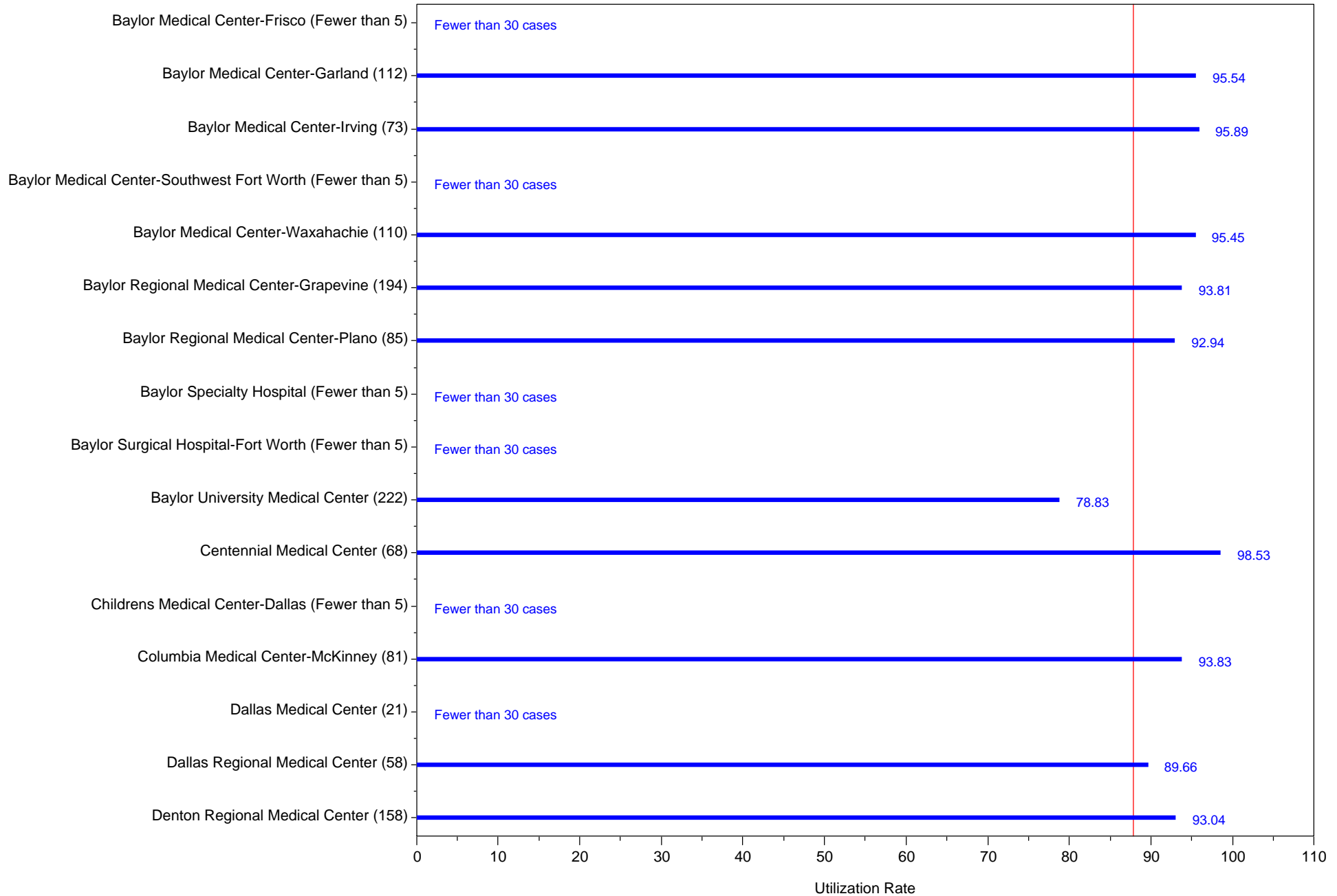
Laparoscopic Cholecystectomy Rate, 2012

Better quality may be associated with higher rates
 (C) Comment submitted by hospital
 page=4



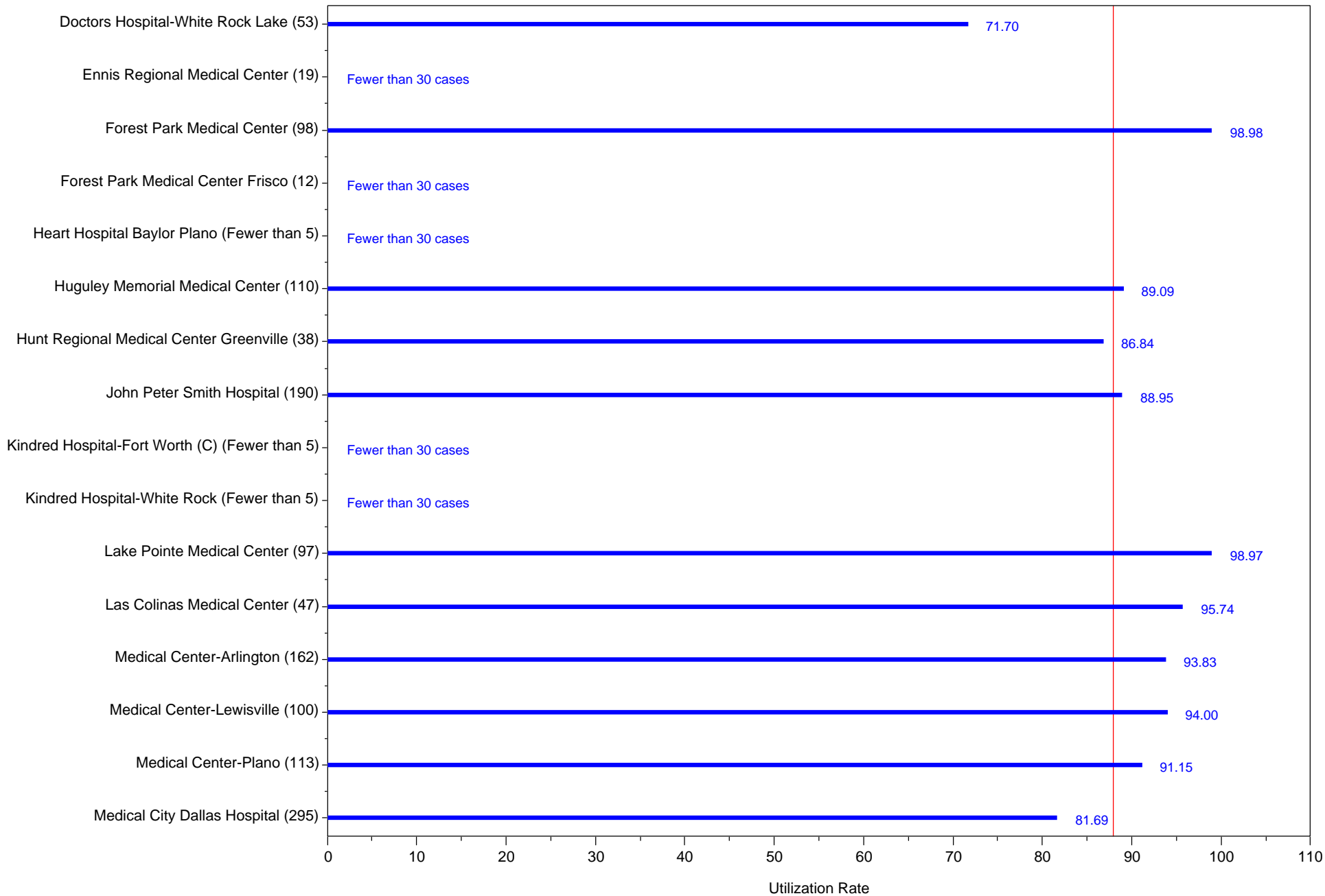
Laparoscopic Cholecystectomy Rate, 2012

Better quality may be associated with higher rates
 (C) Comment submitted by hospital
 page=5



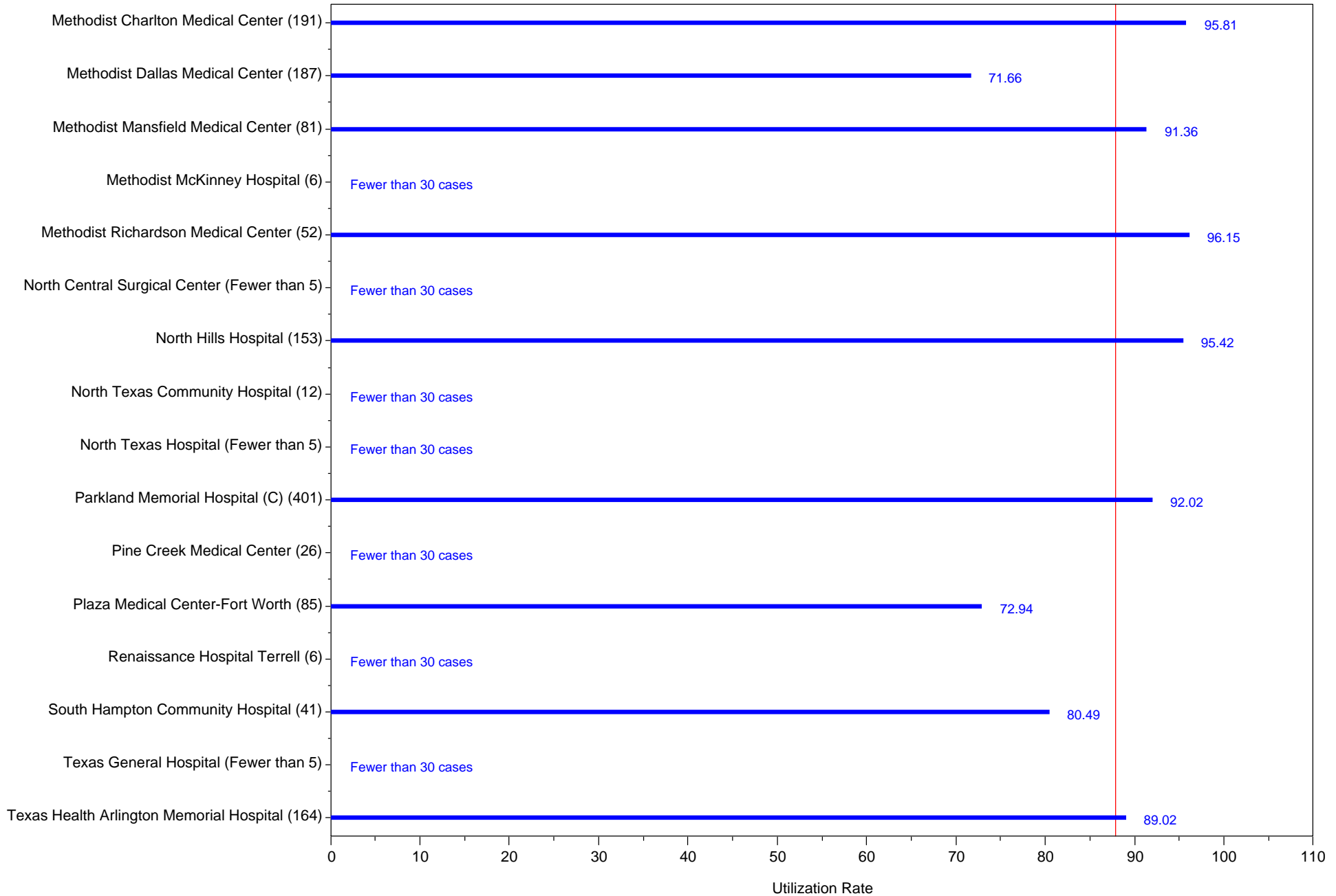
Laparoscopic Cholecystectomy Rate, 2012

Better quality may be associated with higher rates
(C) Comment submitted by hospital
page=6



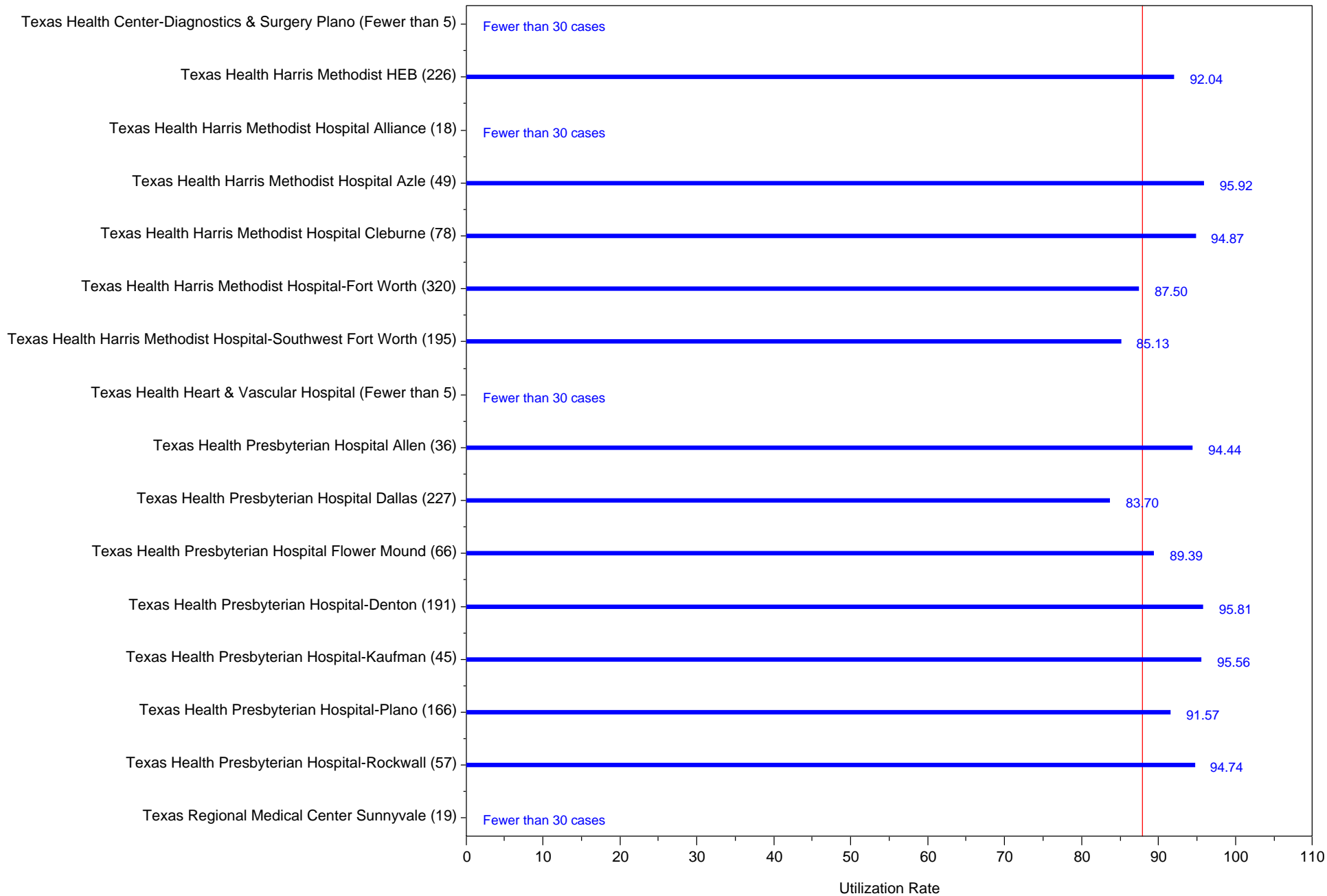
Laparoscopic Cholecystectomy Rate, 2012

Better quality may be associated with higher rates
(C) Comment submitted by hospital
page=7



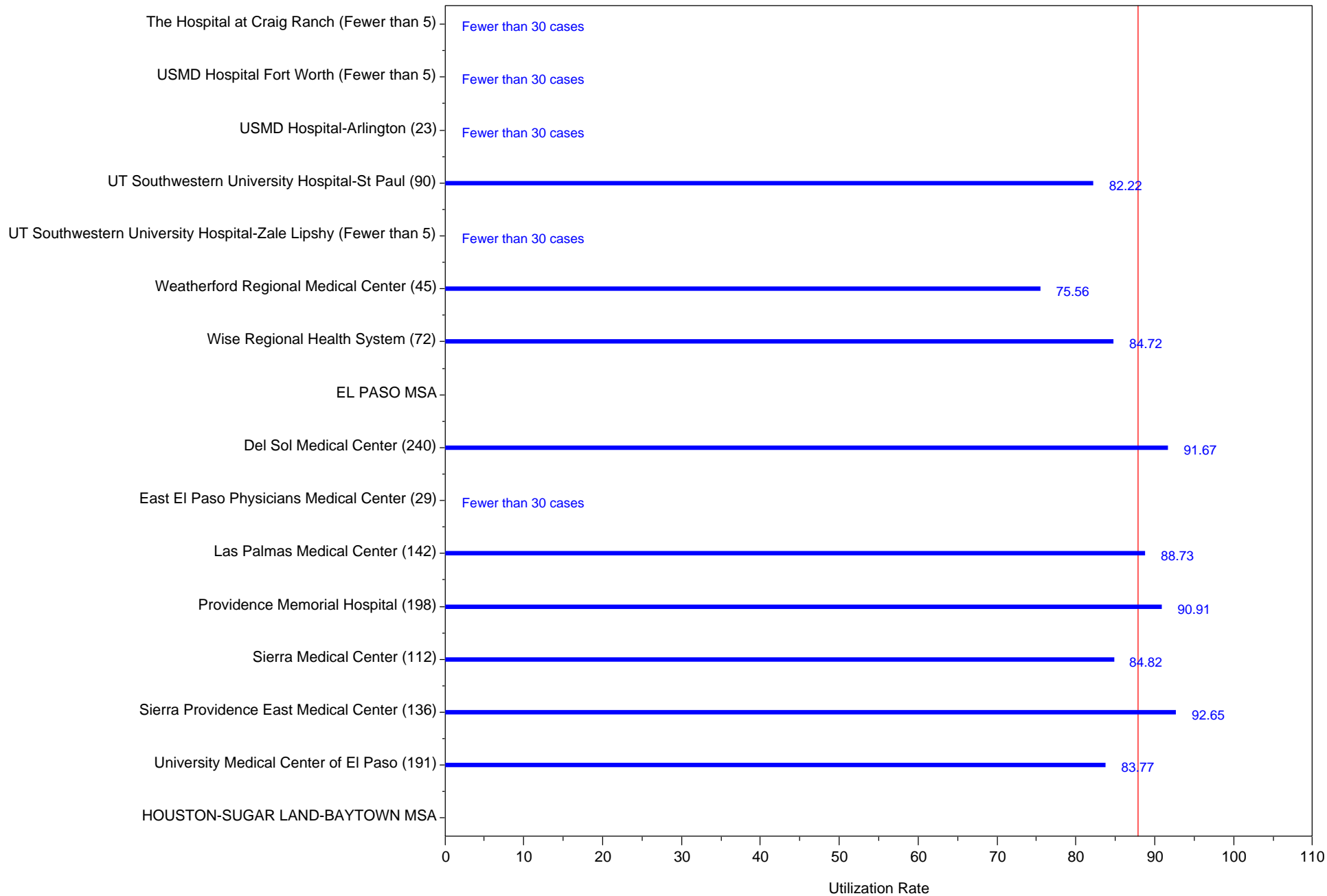
Laparoscopic Cholecystectomy Rate, 2012

Better quality may be associated with higher rates
 (C) Comment submitted by hospital
 page=8



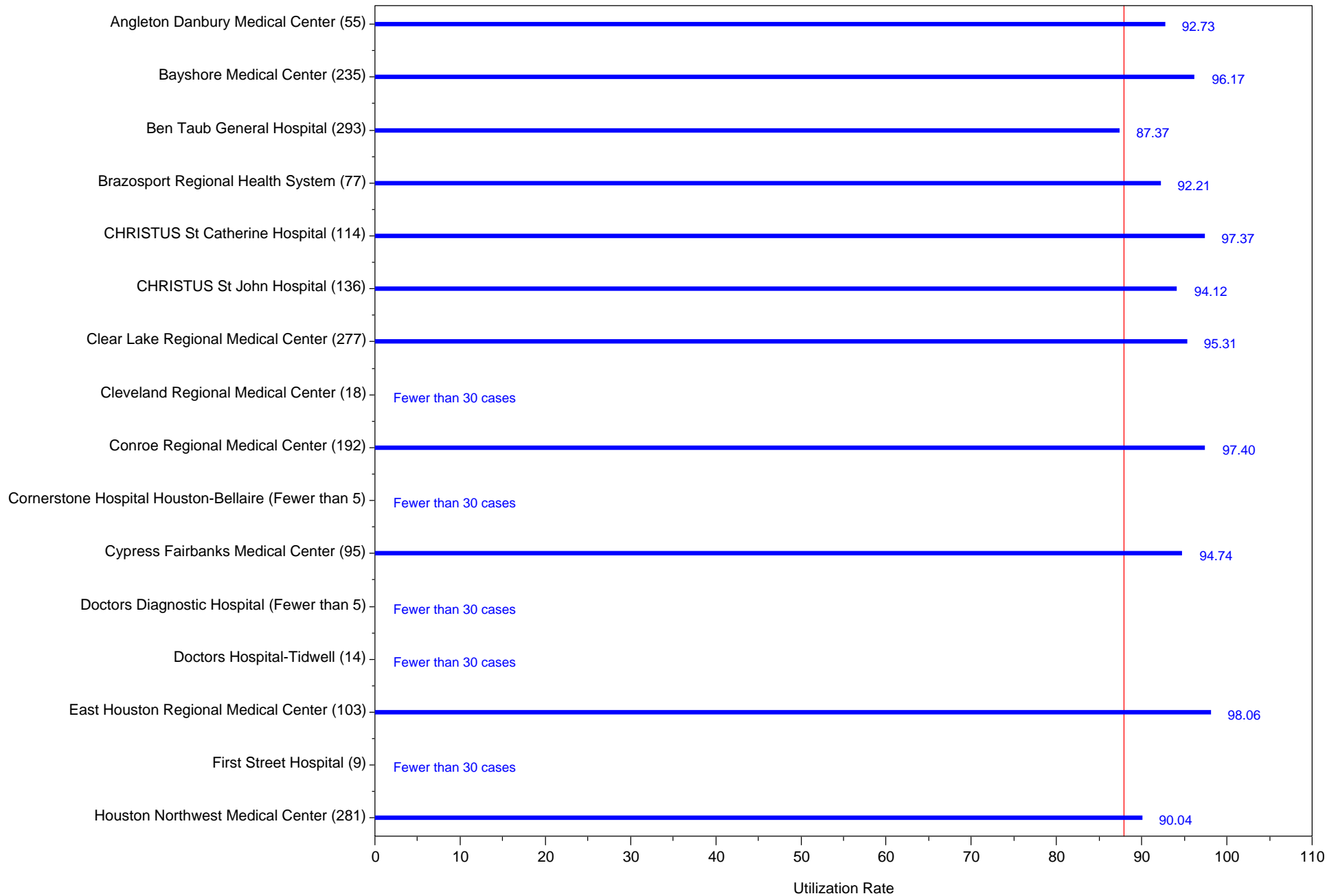
Laparoscopic Cholecystectomy Rate, 2012

Better quality may be associated with higher rates
 (C) Comment submitted by hospital
 page=9



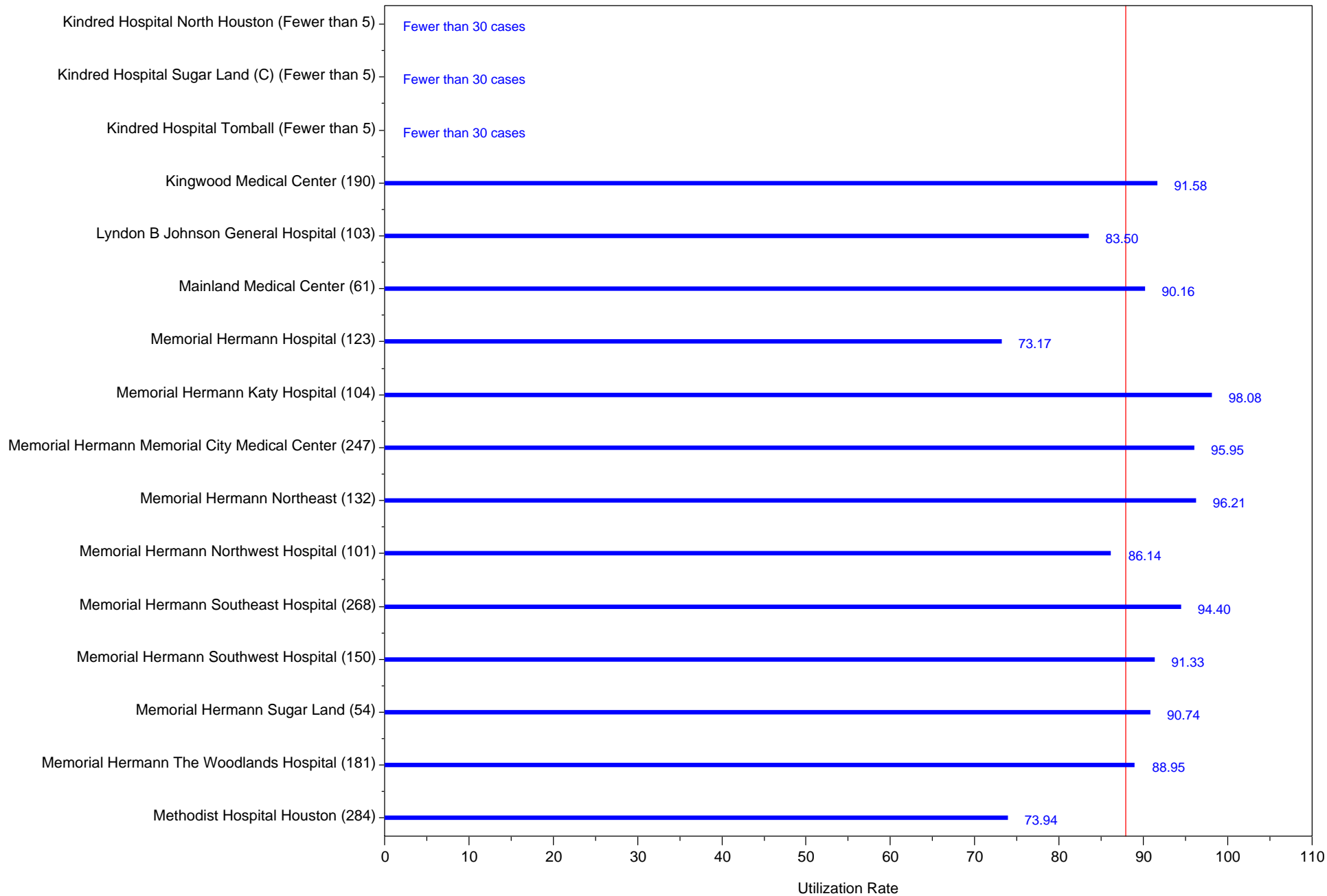
Laparoscopic Cholecystectomy Rate, 2012

Better quality may be associated with higher rates
 (C) Comment submitted by hospital
 page=10



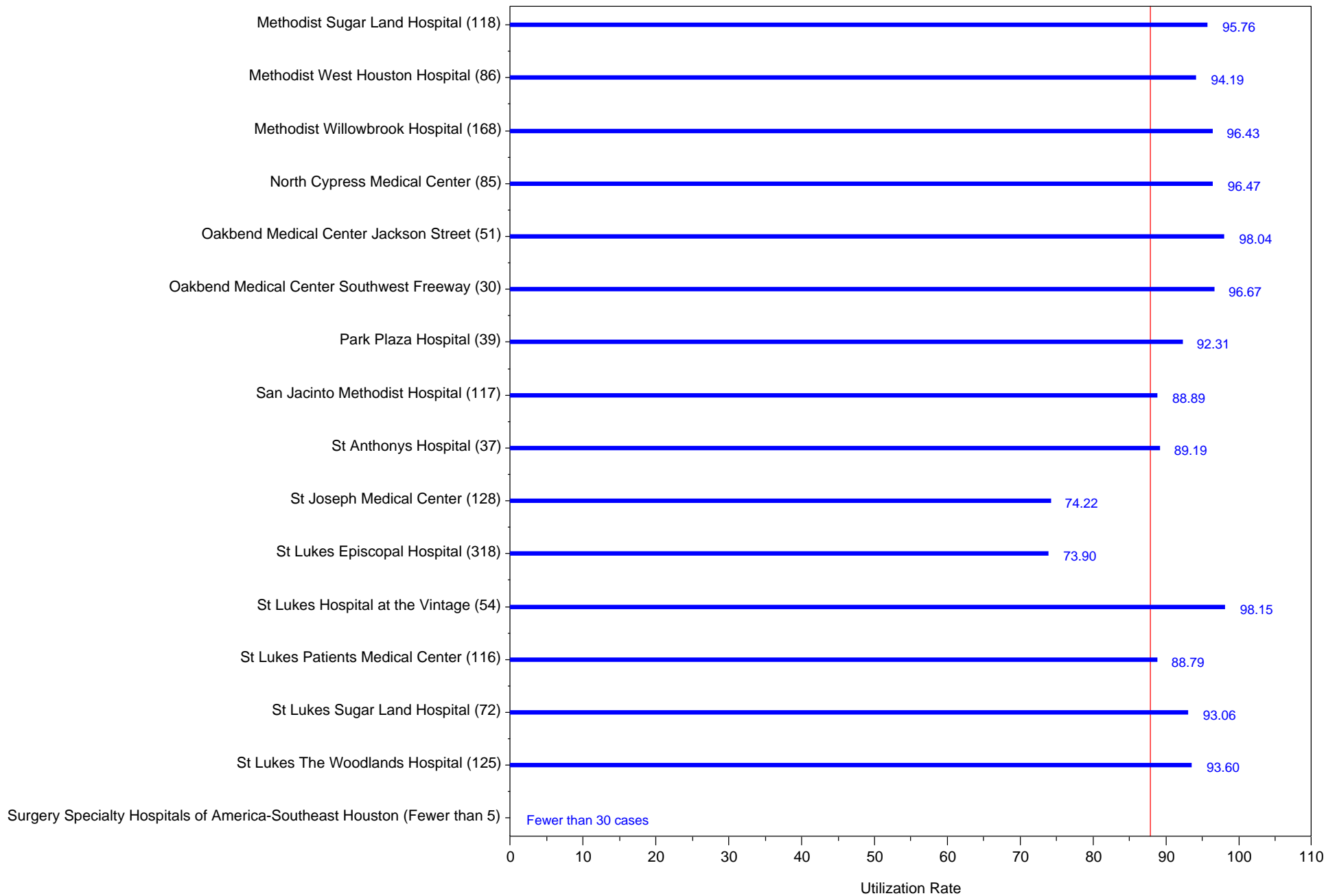
Laparoscopic Cholecystectomy Rate, 2012

Better quality may be associated with higher rates
(C) Comment submitted by hospital
page=11



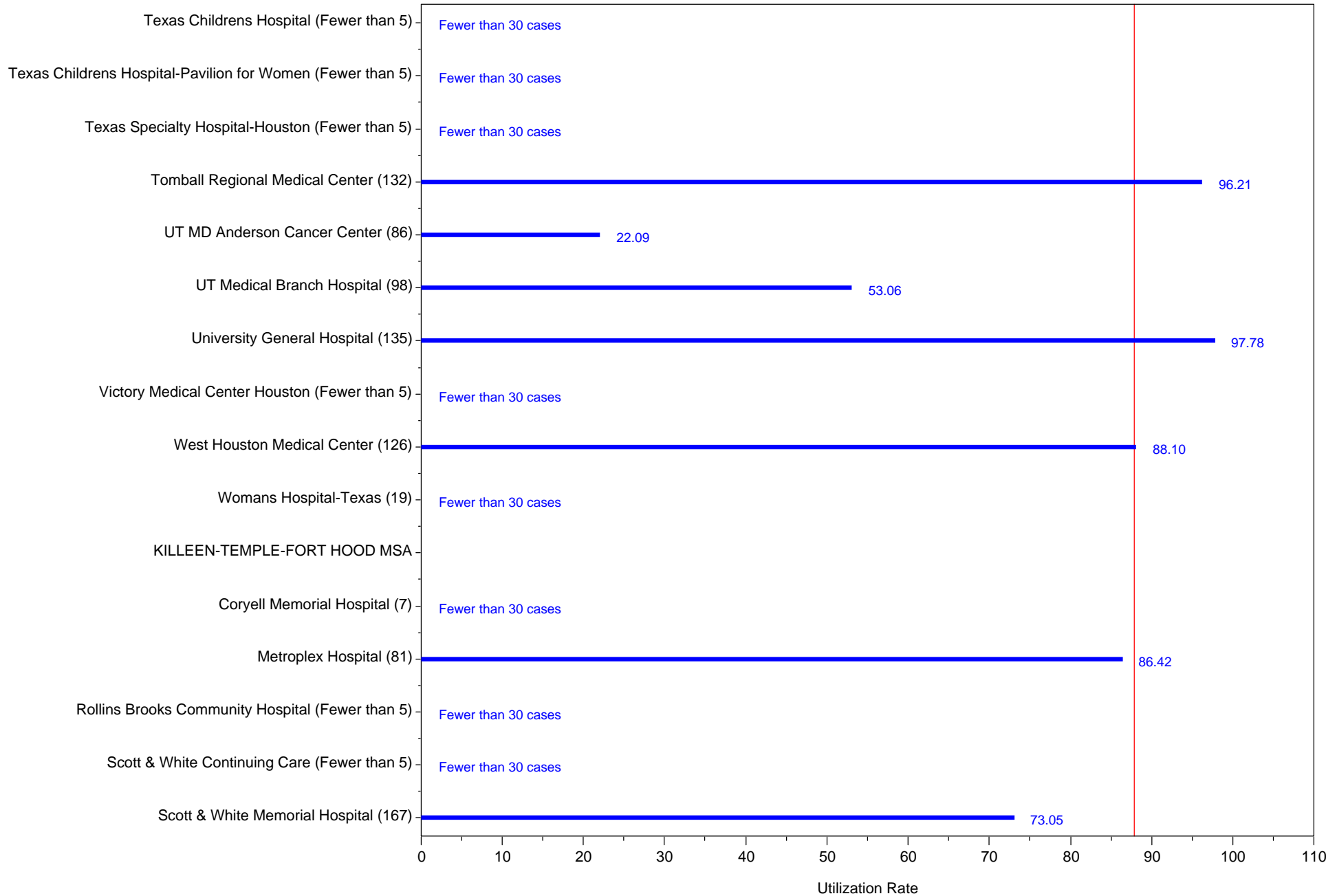
Laparoscopic Cholecystectomy Rate, 2012

Better quality may be associated with higher rates
(C) Comment submitted by hospital
page=12



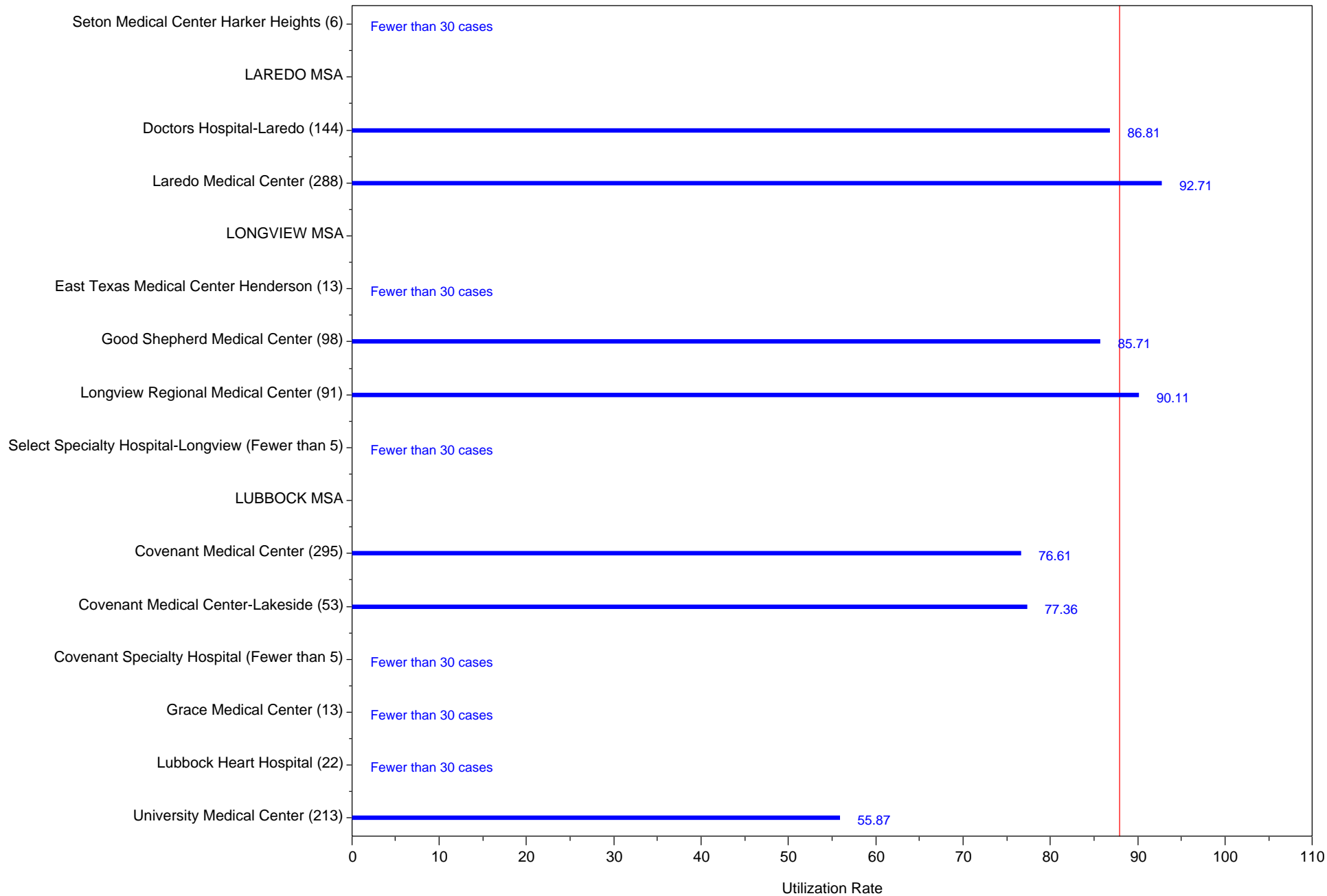
Laparoscopic Cholecystectomy Rate, 2012

Better quality may be associated with higher rates
 (C) Comment submitted by hospital
 page=13



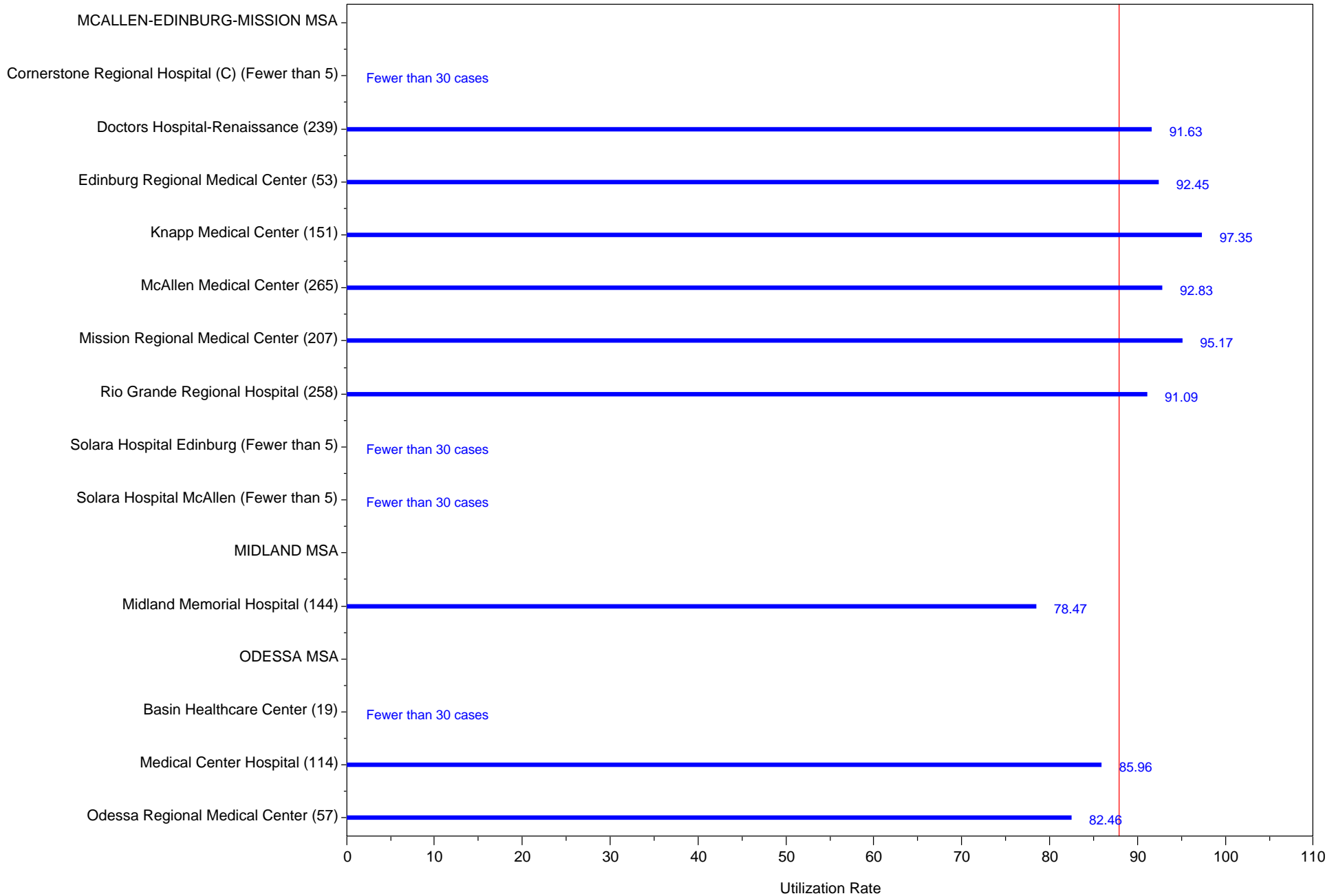
Laparoscopic Cholecystectomy Rate, 2012

Better quality may be associated with higher rates
 (C) Comment submitted by hospital
 page=14



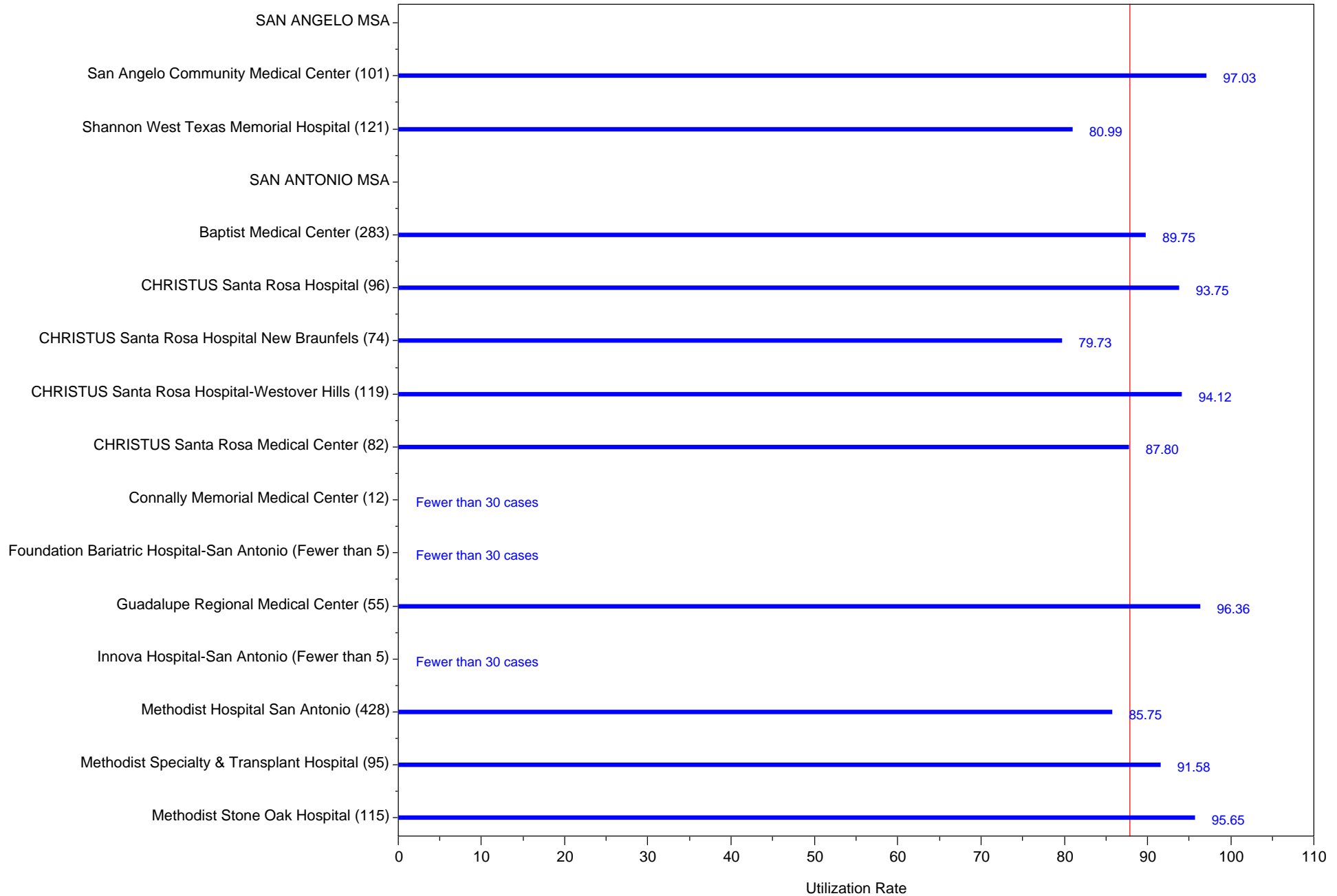
Laparoscopic Cholecystectomy Rate, 2012

Better quality may be associated with higher rates
(C) Comment submitted by hospital
page=15



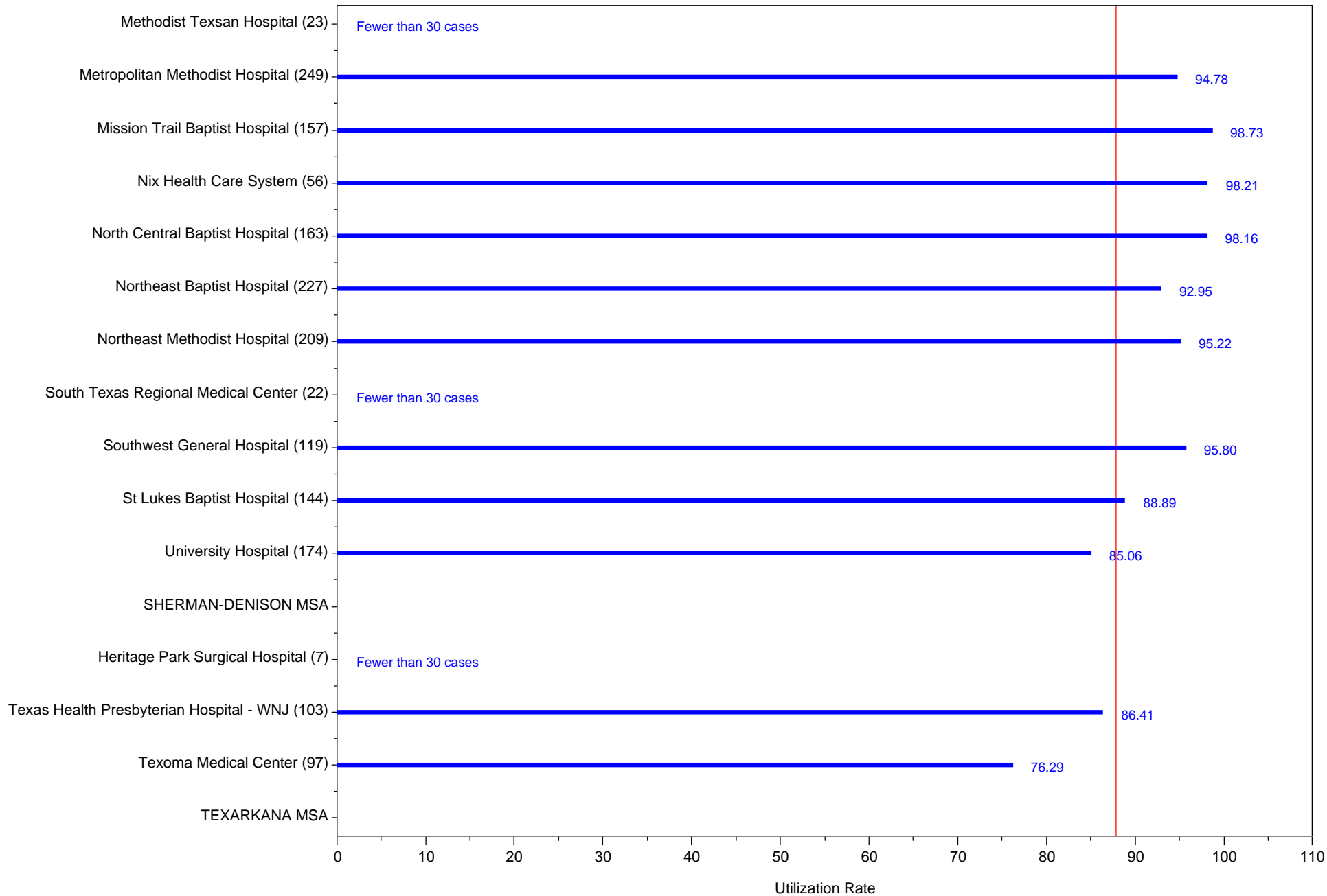
Laparoscopic Cholecystectomy Rate, 2012

Better quality may be associated with higher rates
 (C) Comment submitted by hospital
 page=16



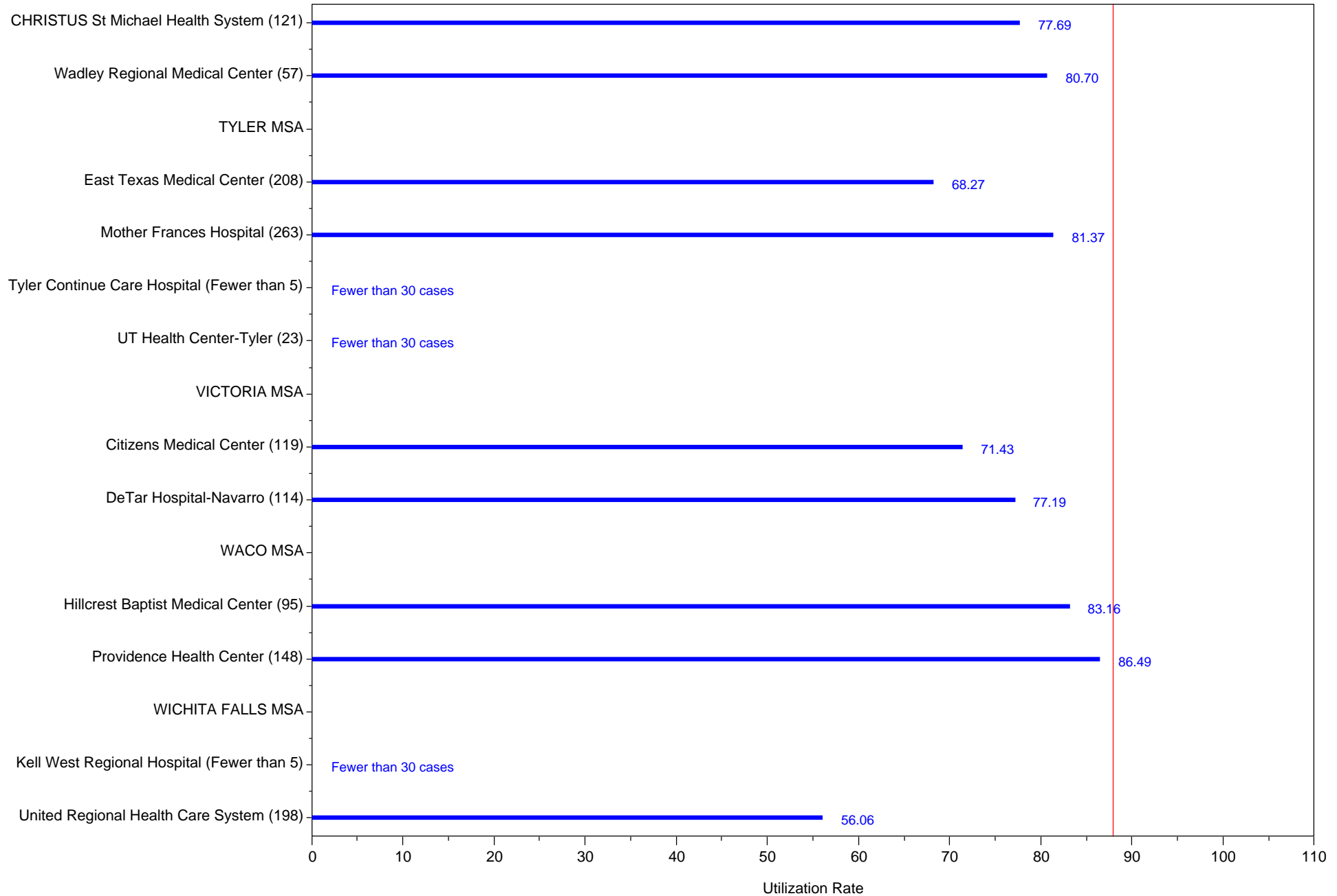
Laparoscopic Cholecystectomy Rate, 2012

Better quality may be associated with higher rates
 (C) Comment submitted by hospital
 page=17



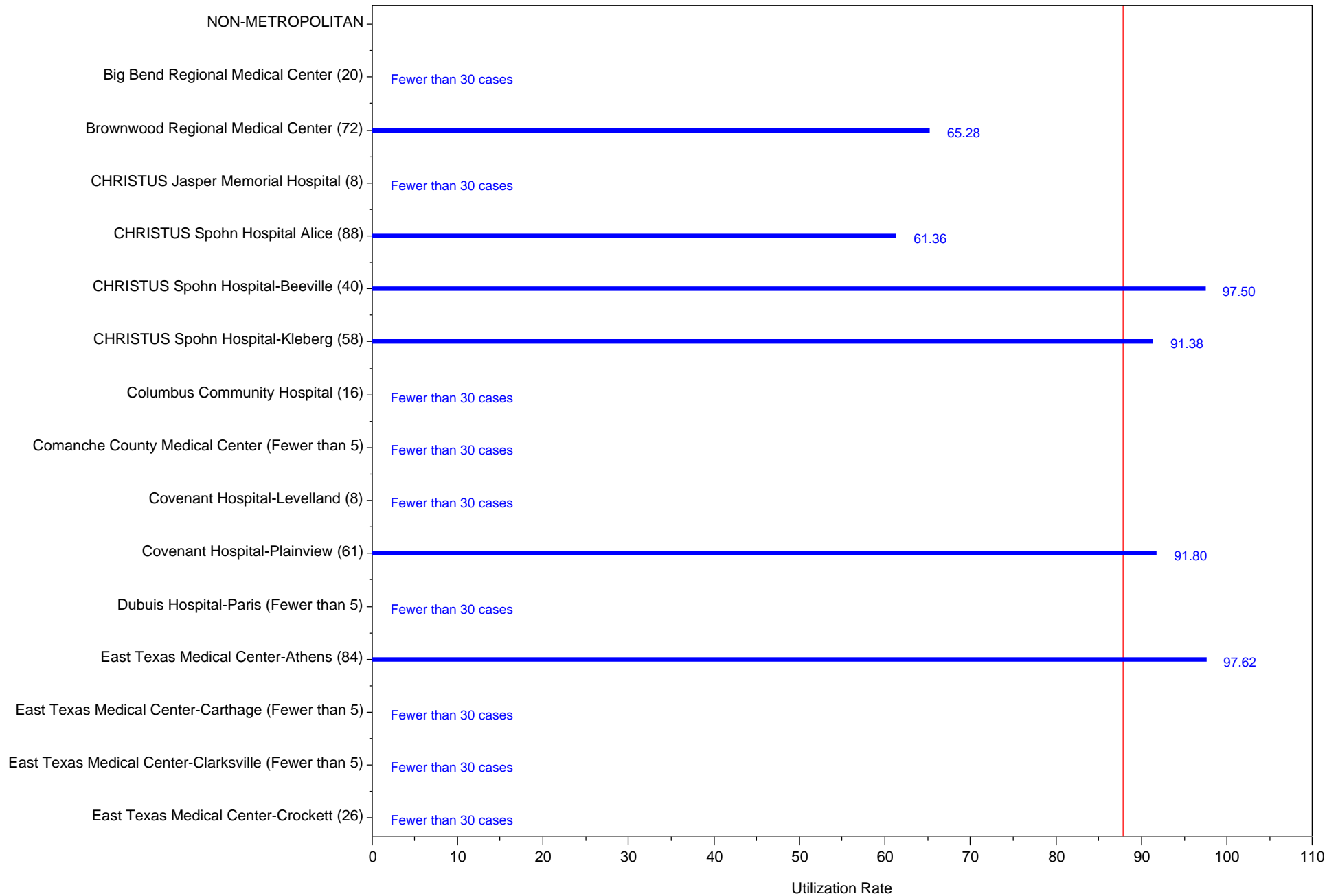
Laparoscopic Cholecystectomy Rate, 2012

Better quality may be associated with higher rates
(C) Comment submitted by hospital
page=18



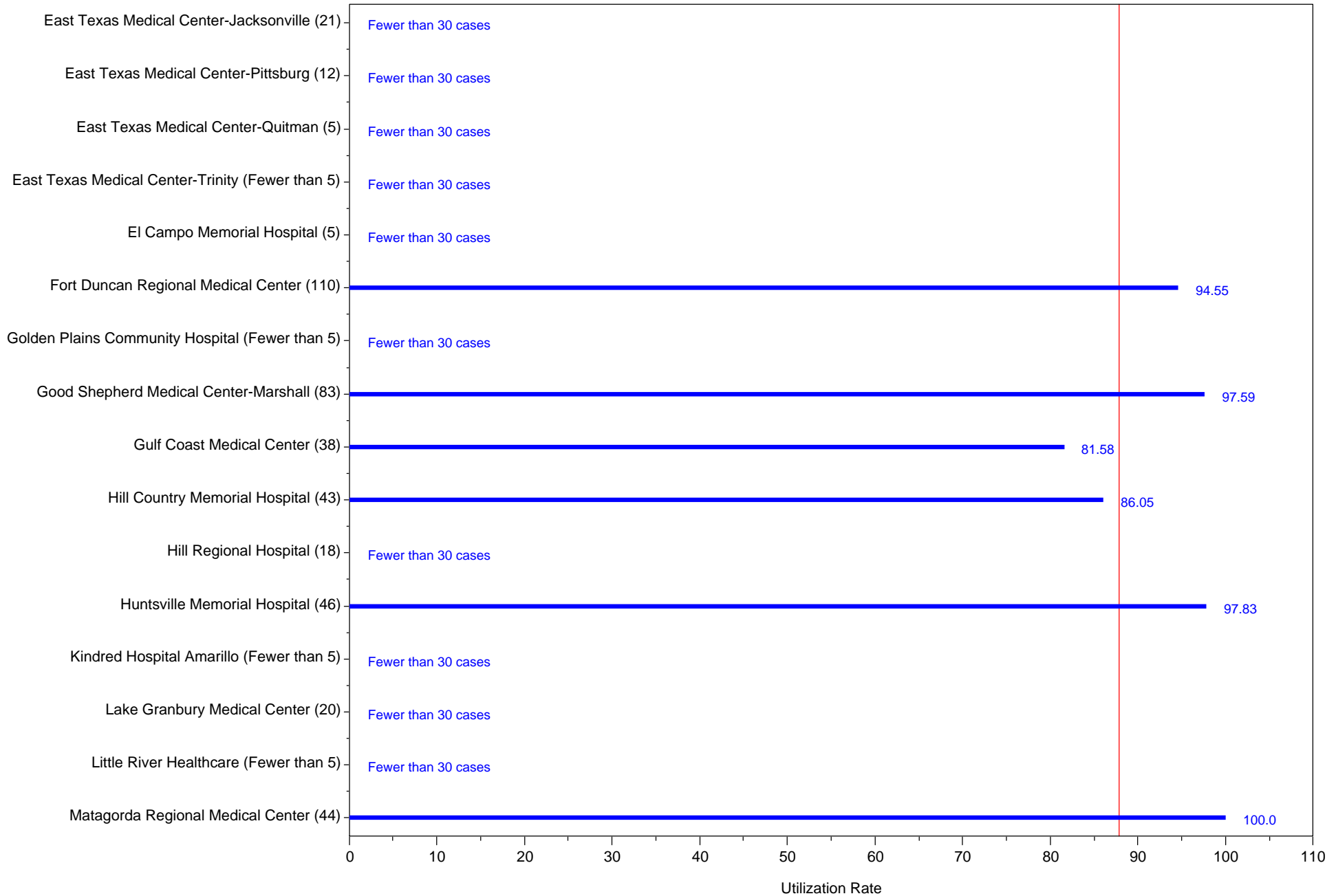
Laparoscopic Cholecystectomy Rate, 2012

Better quality may be associated with higher rates
 (C) Comment submitted by hospital
 page=19



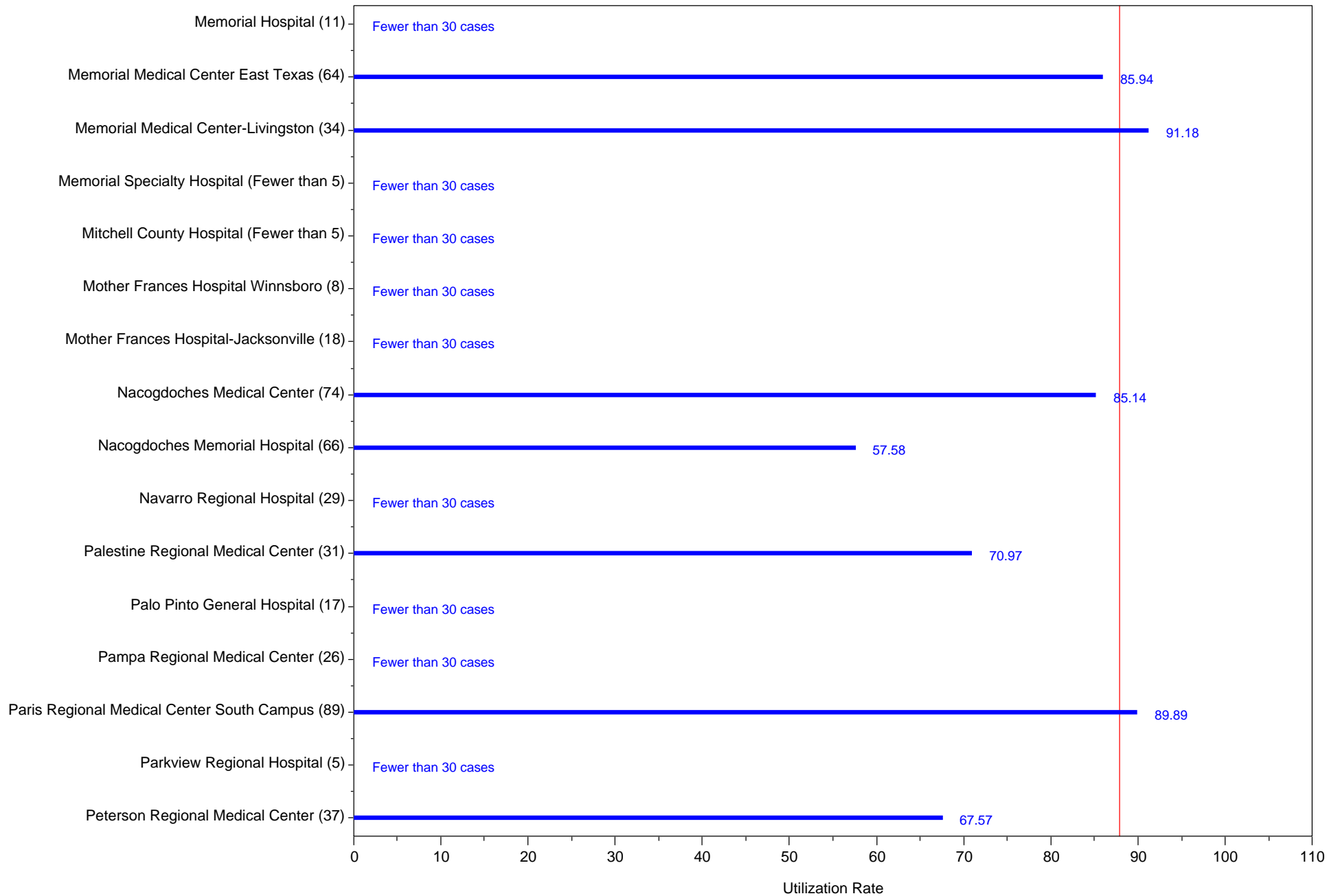
Laparoscopic Cholecystectomy Rate, 2012

Better quality may be associated with higher rates
(C) Comment submitted by hospital
page=20



Laparoscopic Cholecystectomy Rate, 2012

Better quality may be associated with higher rates
(C) Comment submitted by hospital
page=21



Laparoscopic Cholecystectomy Rate, 2012

Better quality may be associated with higher rates
(C) Comment submitted by hospital
page=22

