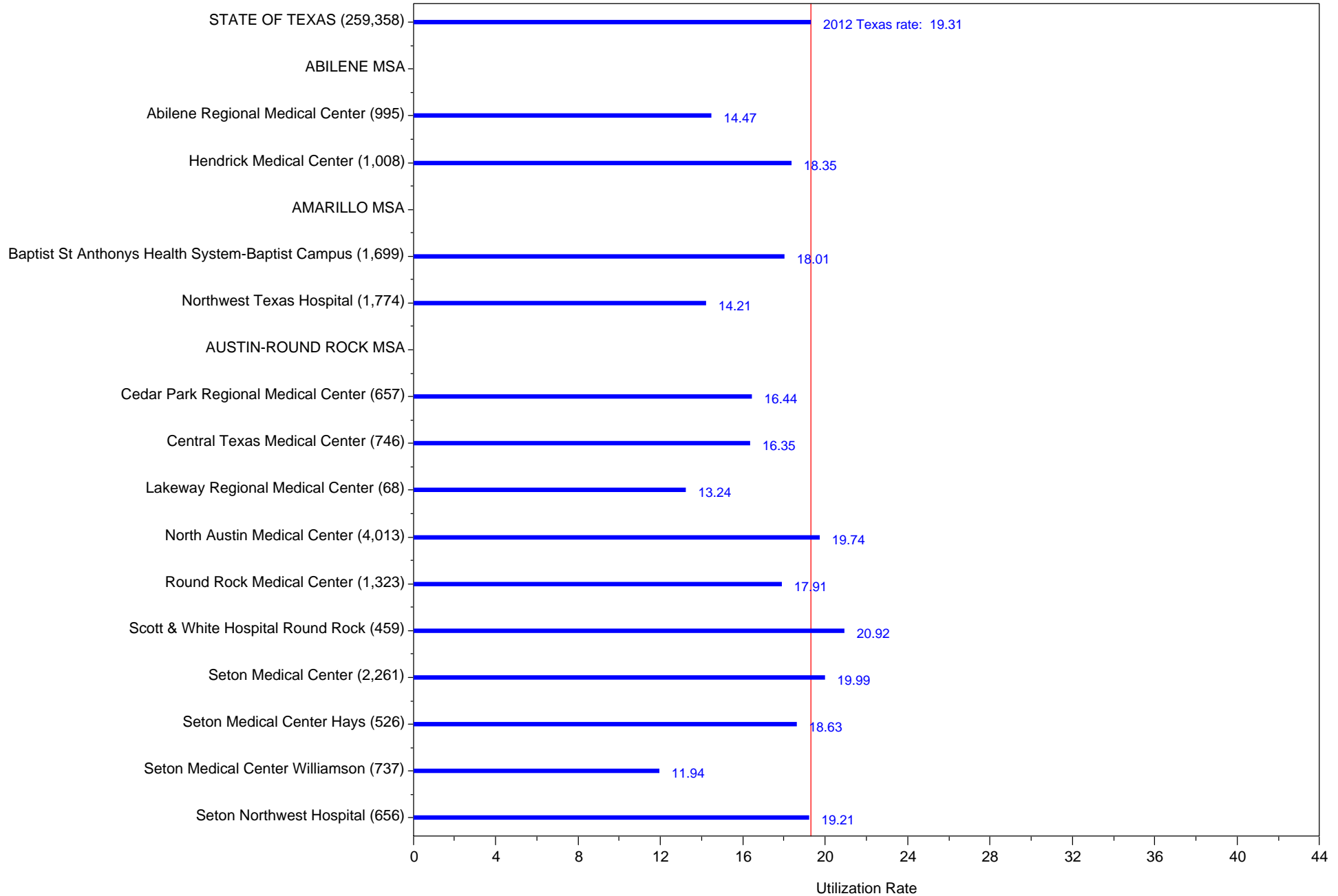


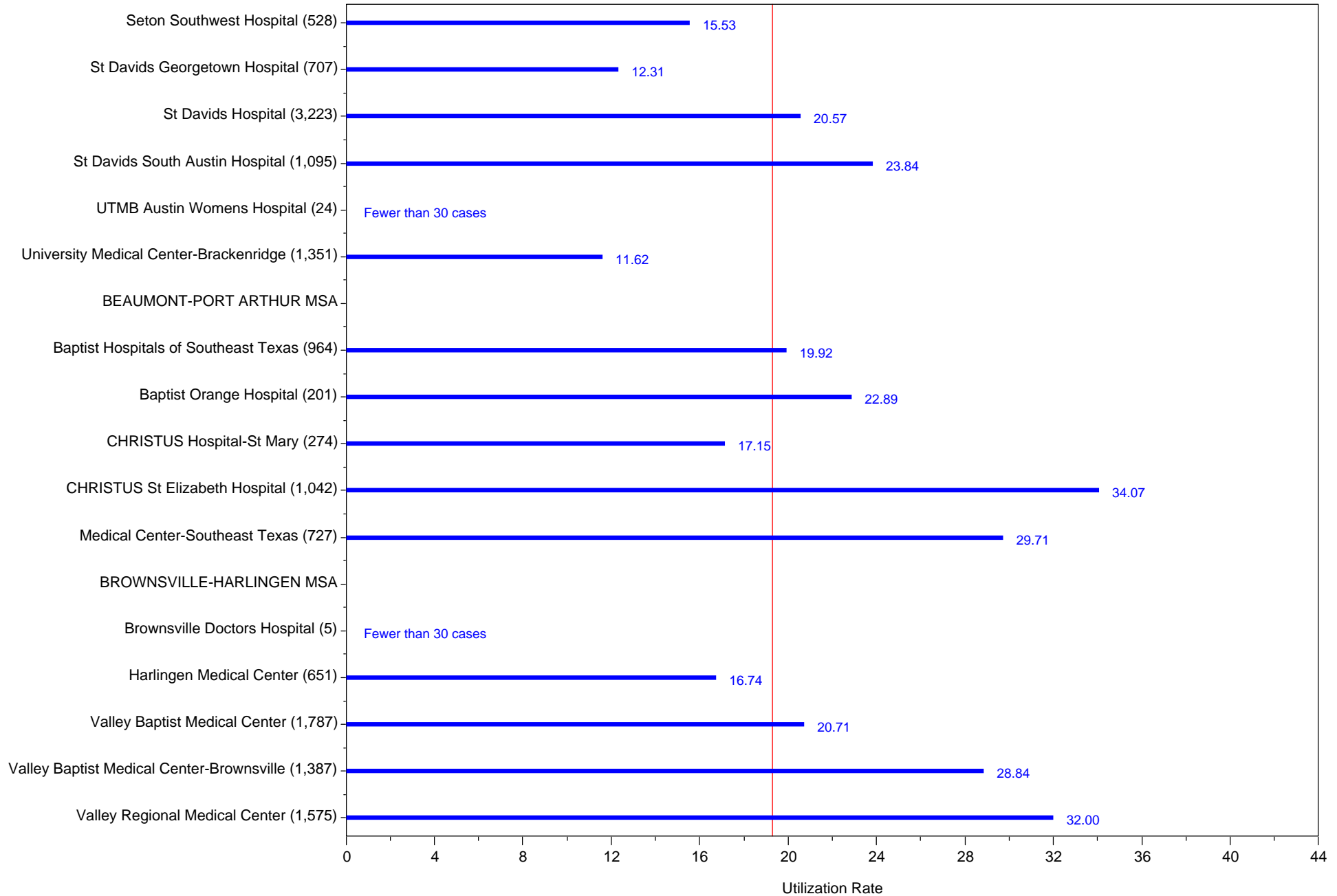
Primary Cesarean Delivery Rate, Uncomplicated, 2012

Better quality may be associated with lower rates
 (C) Comment submitted by hospital
 page=1



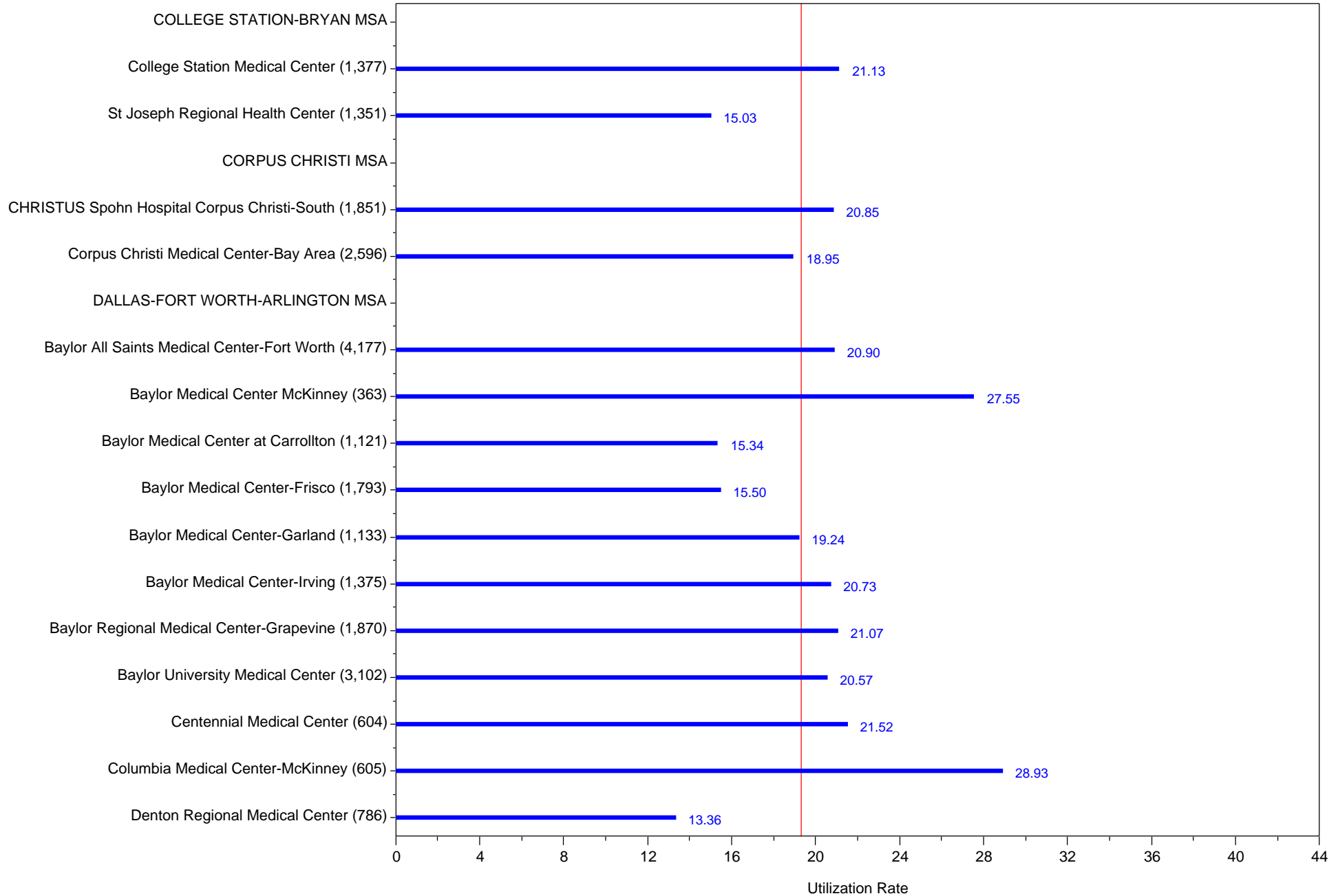
Primary Cesarean Delivery Rate, Uncomplicated, 2012

Better quality may be associated with lower rates
 (C) Comment submitted by hospital
 page=2



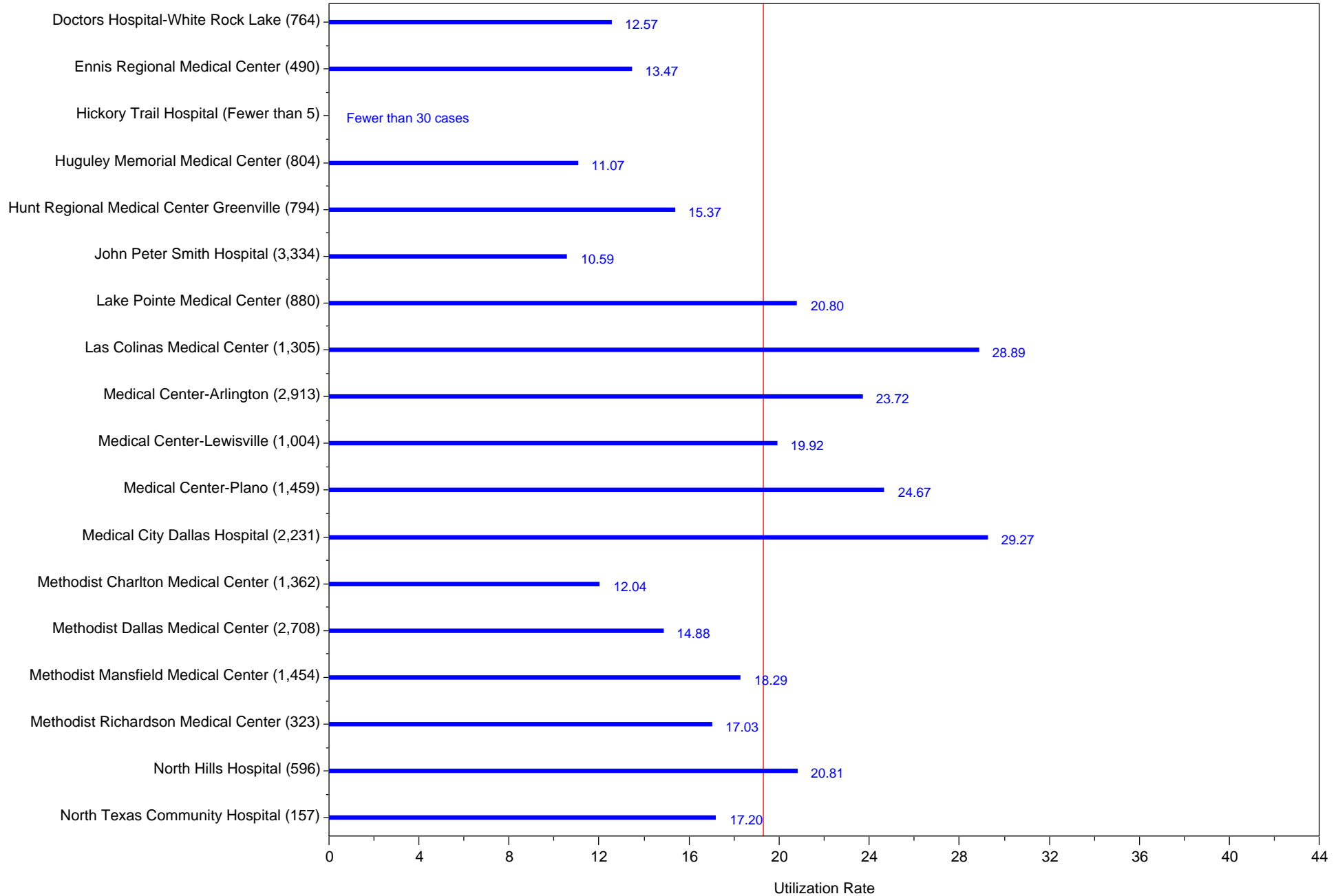
Primary Cesarean Delivery Rate, Uncomplicated, 2012

Better quality may be associated with lower rates
(C) Comment submitted by hospital
page=3



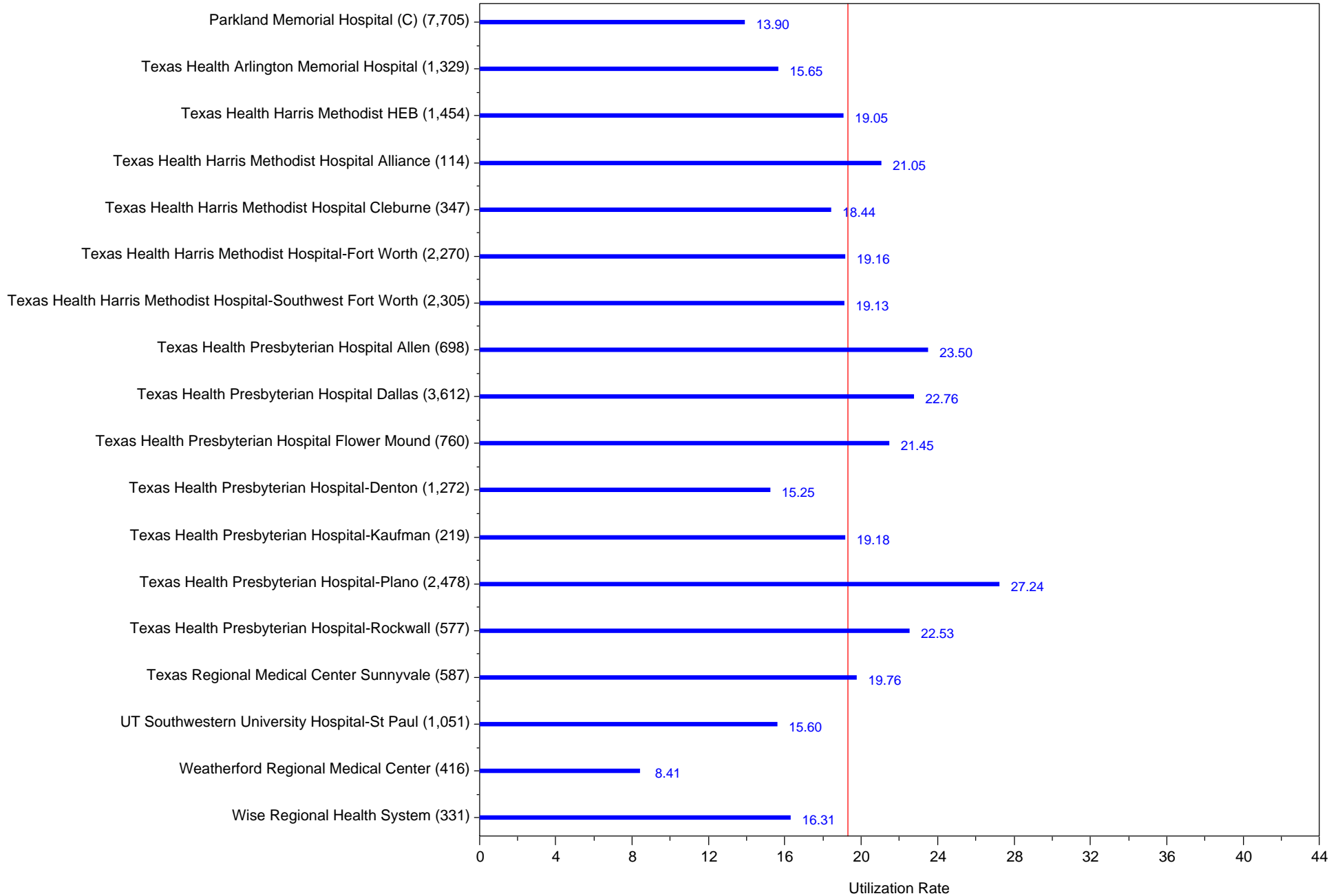
Primary Cesarean Delivery Rate, Uncomplicated, 2012

Better quality may be associated with lower rates
 (C) Comment submitted by hospital
 page=4



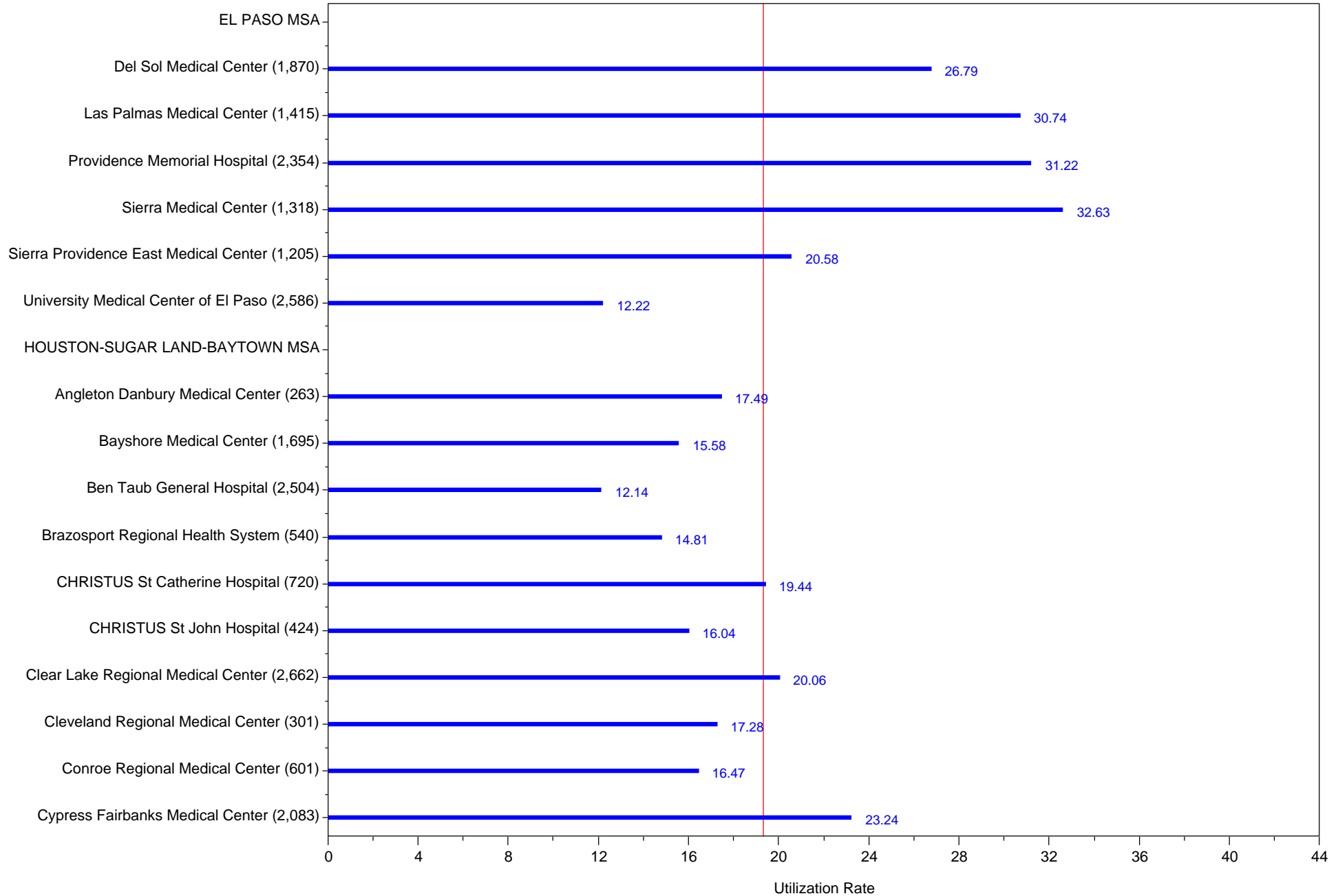
Primary Cesarean Delivery Rate, Uncomplicated, 2012

Better quality may be associated with lower rates
 (C) Comment submitted by hospital
 page=5



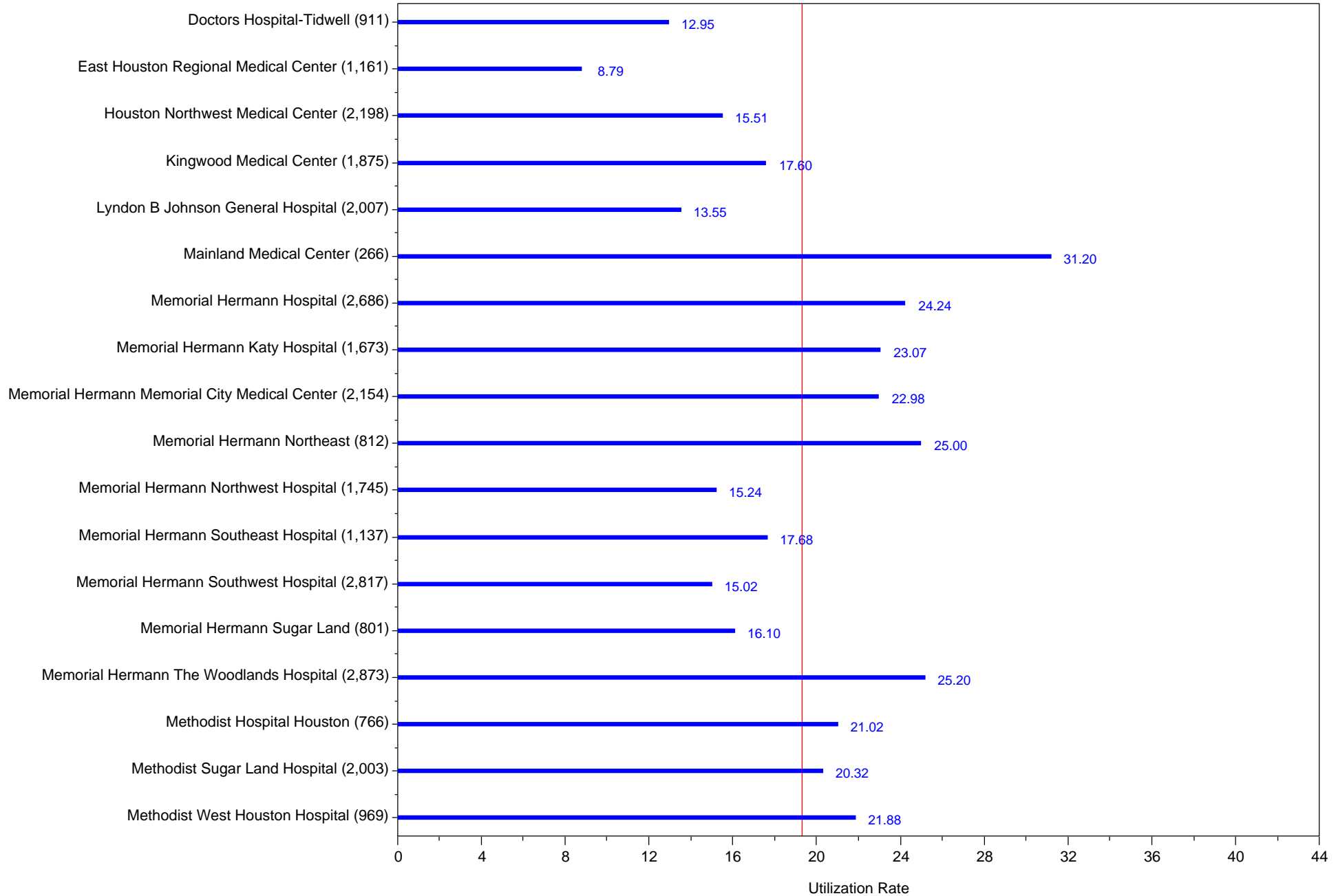
Primary Cesarean Delivery Rate, Uncomplicated, 2012

Better quality may be associated with lower rates
(C) Comment submitted by hospital
page=6



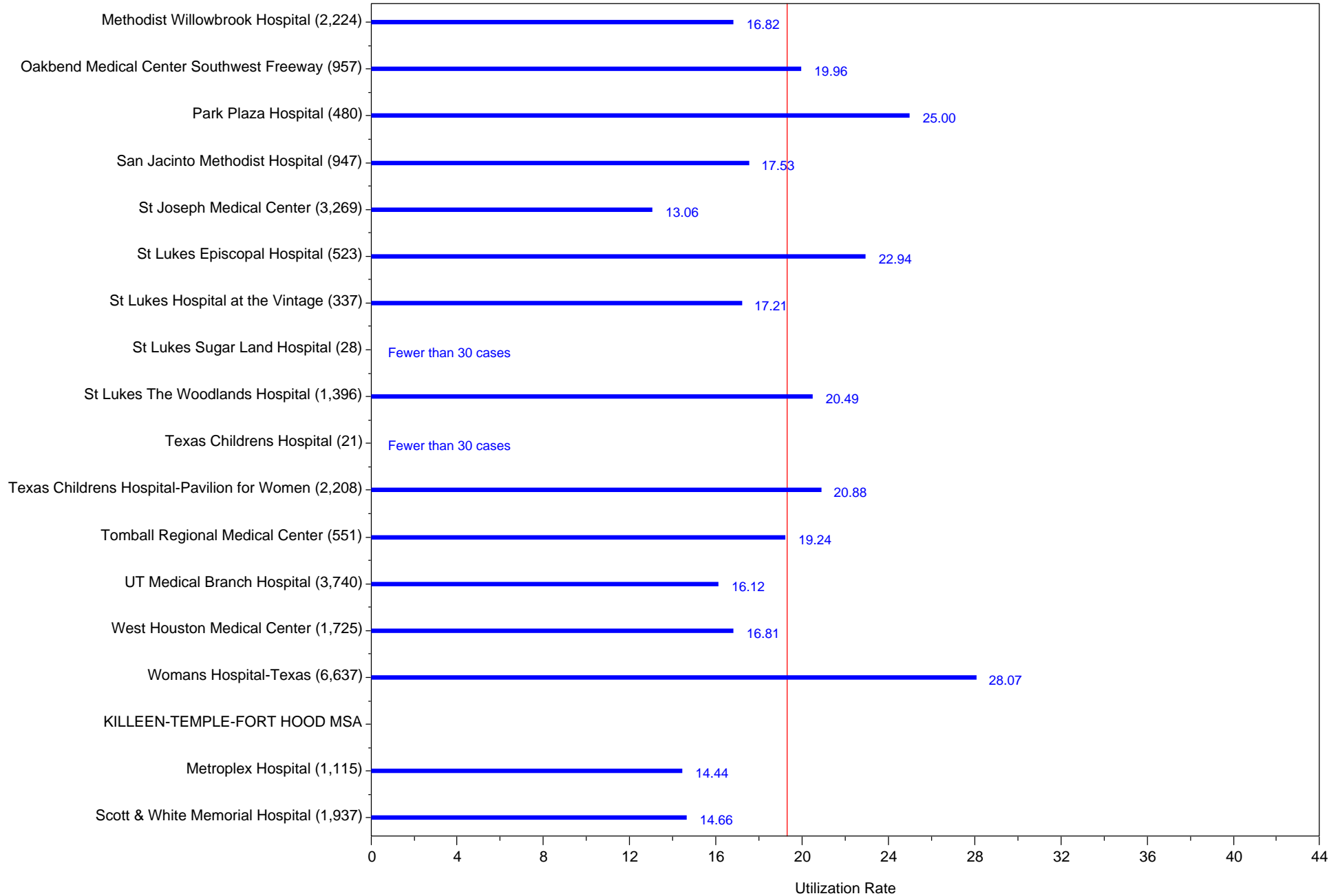
Primary Cesarean Delivery Rate, Uncomplicated, 2012

Better quality may be associated with lower rates
(C) Comment submitted by hospital
page=7



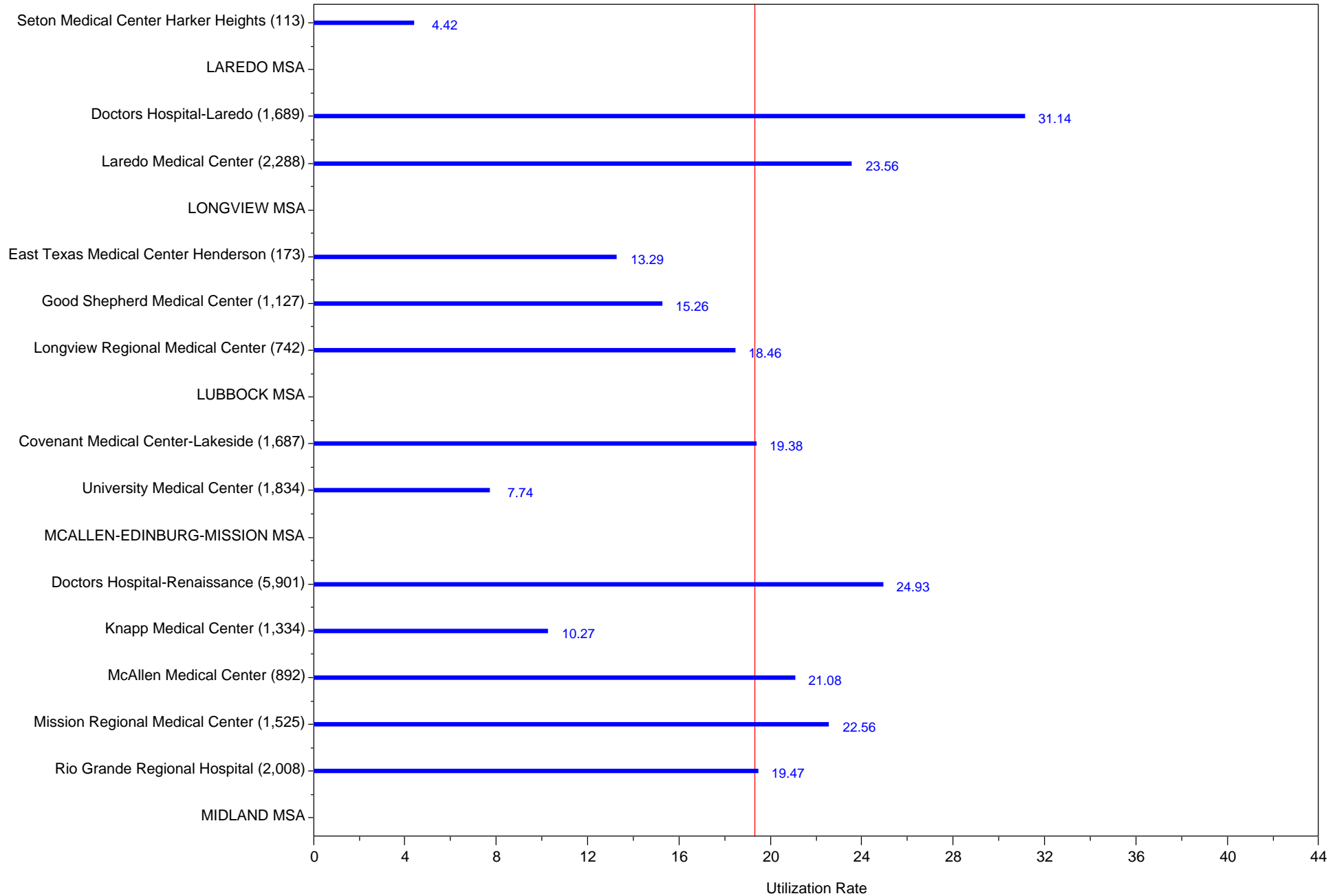
Primary Cesarean Delivery Rate, Uncomplicated, 2012

Better quality may be associated with lower rates
 (C) Comment submitted by hospital
 page=8



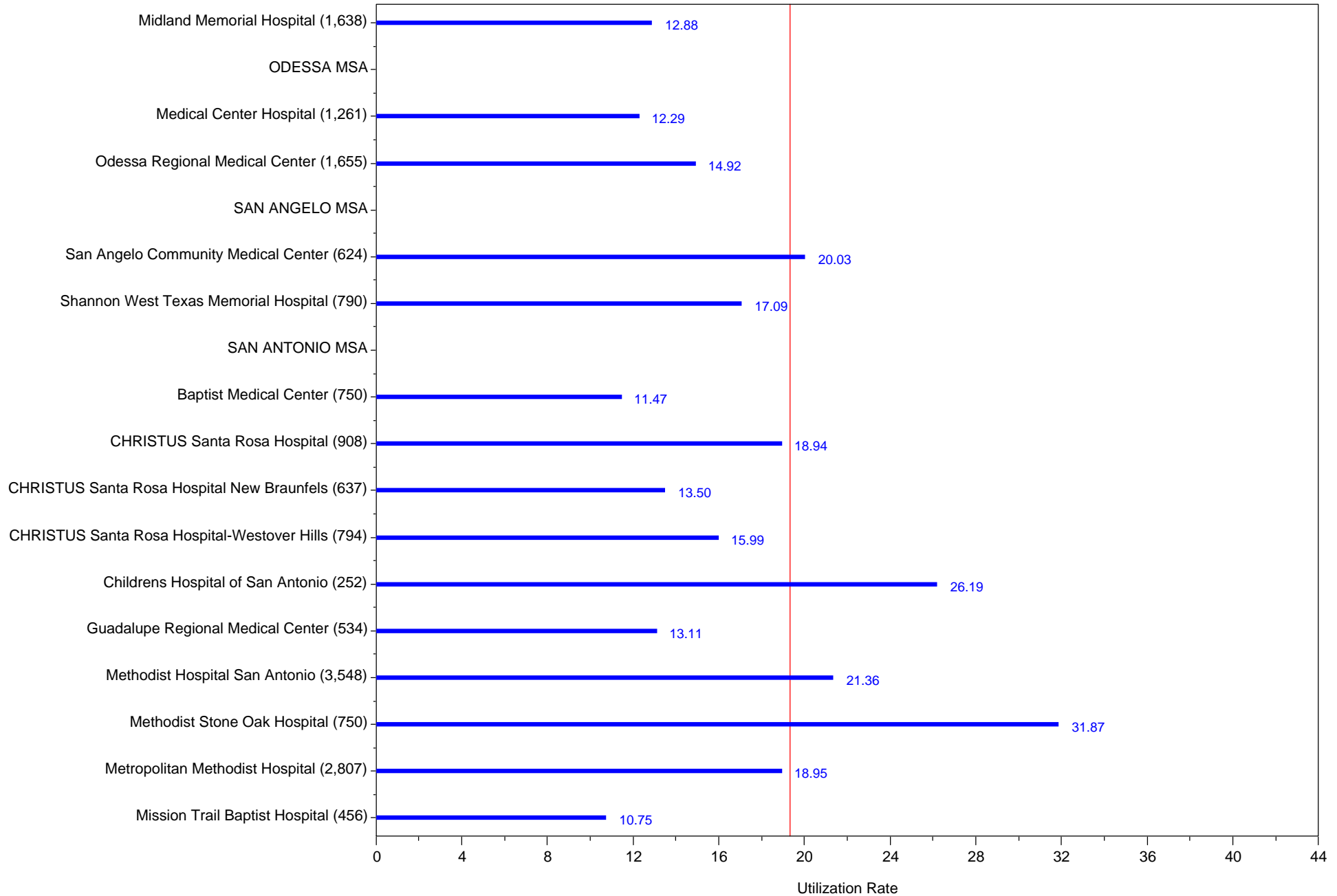
Primary Cesarean Delivery Rate, Uncomplicated, 2012

Better quality may be associated with lower rates
(C) Comment submitted by hospital
page=9



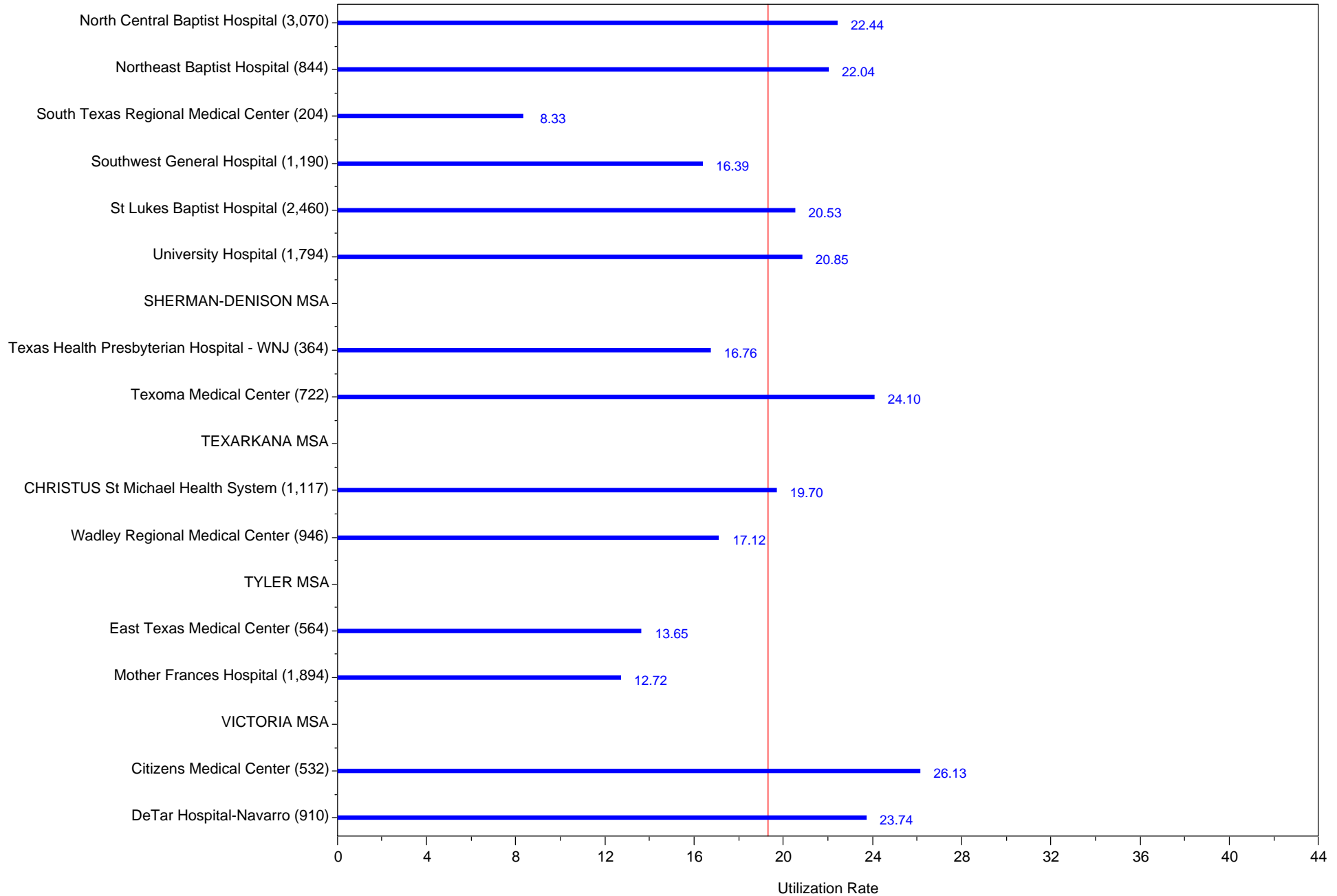
Primary Cesarean Delivery Rate, Uncomplicated, 2012

Better quality may be associated with lower rates
 (C) Comment submitted by hospital
 page=10



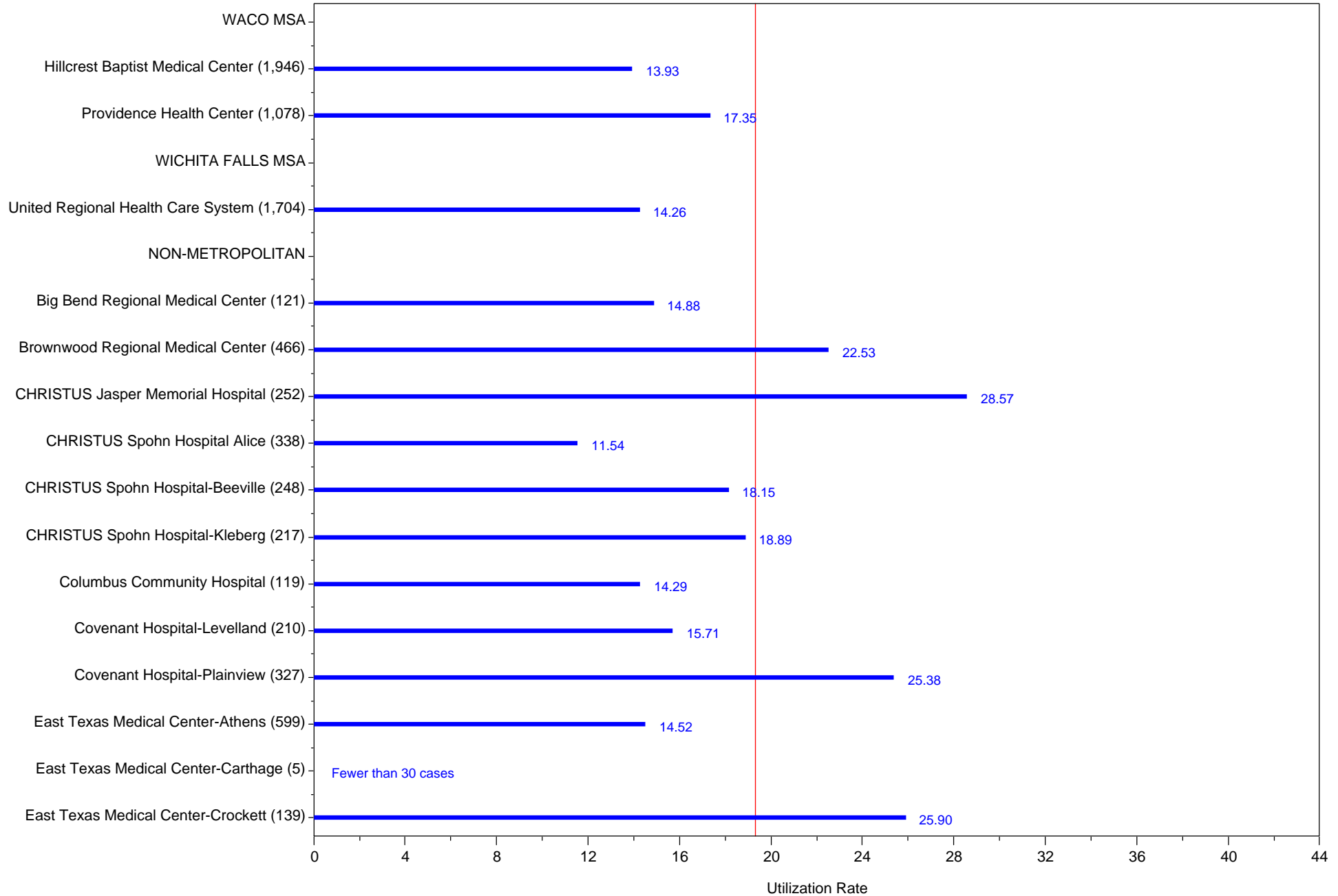
Primary Cesarean Delivery Rate, Uncomplicated, 2012

Better quality may be associated with lower rates
 (C) Comment submitted by hospital
 page=11



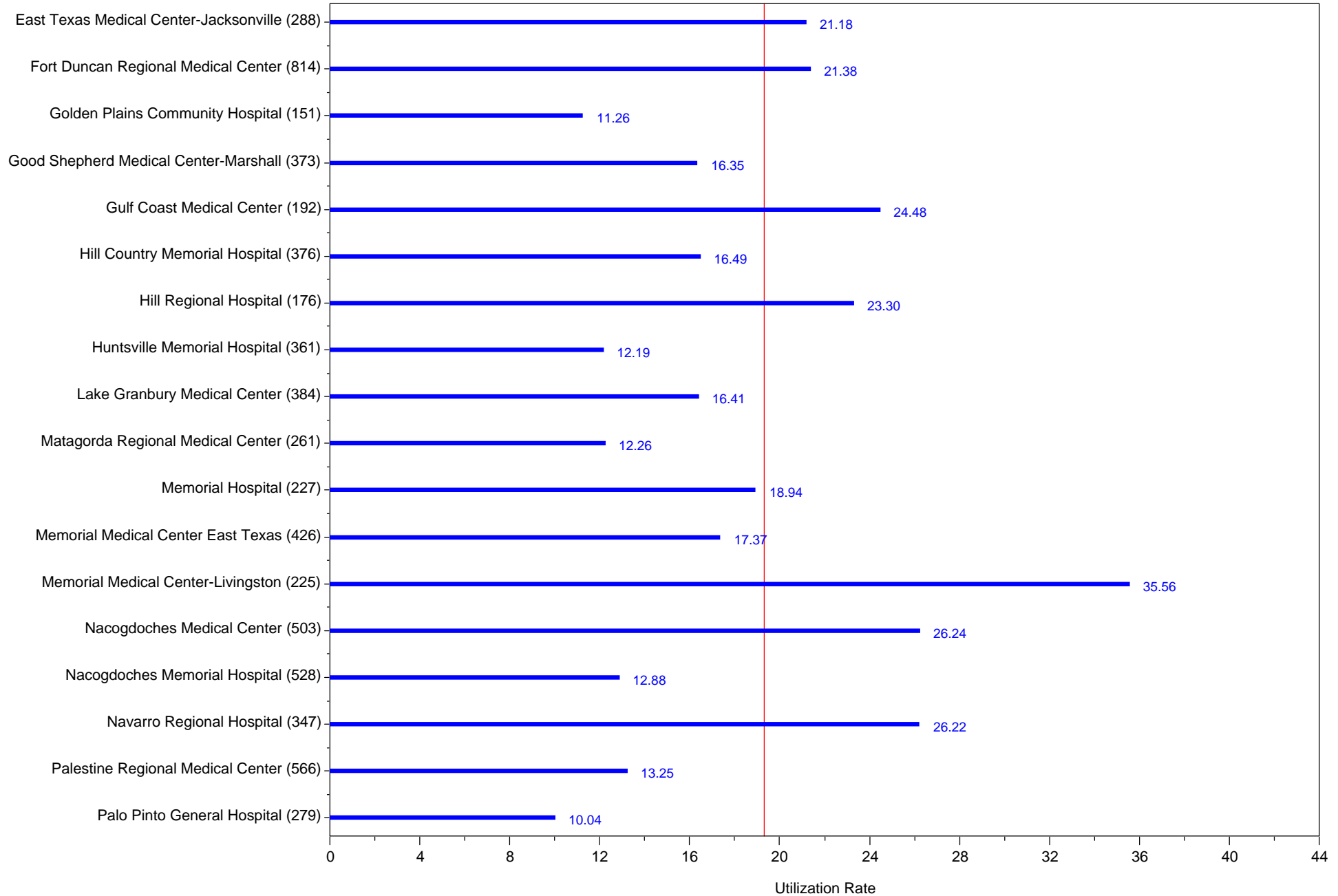
Primary Cesarean Delivery Rate, Uncomplicated, 2012

Better quality may be associated with lower rates
 (C) Comment submitted by hospital
 page=12



Primary Cesarean Delivery Rate, Uncomplicated, 2012

Better quality may be associated with lower rates
(C) Comment submitted by hospital
page=13



Primary Cesarean Delivery Rate, Uncomplicated, 2012

Better quality may be associated with lower rates
(C) Comment submitted by hospital
page=14

