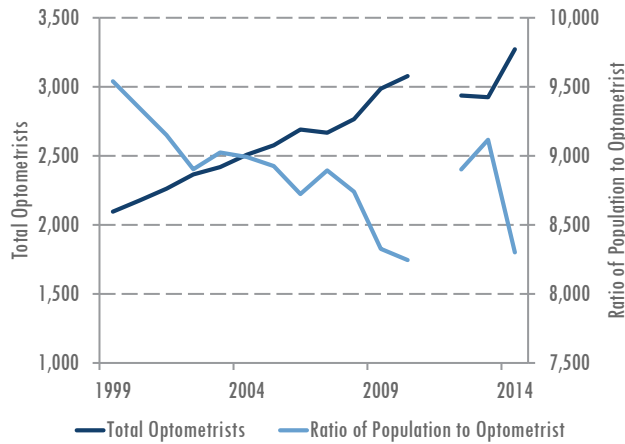




## Optometrists

2014

### Optometrist Growth Trends



In 2014, there were 3,272 actively licensed optometrists providing care in Texas.

- This number represented a 9.5% increase since 2009 and a 30.5% increase since 2004.

Despite these improvements, Texas still had fewer optometrists than the national average.

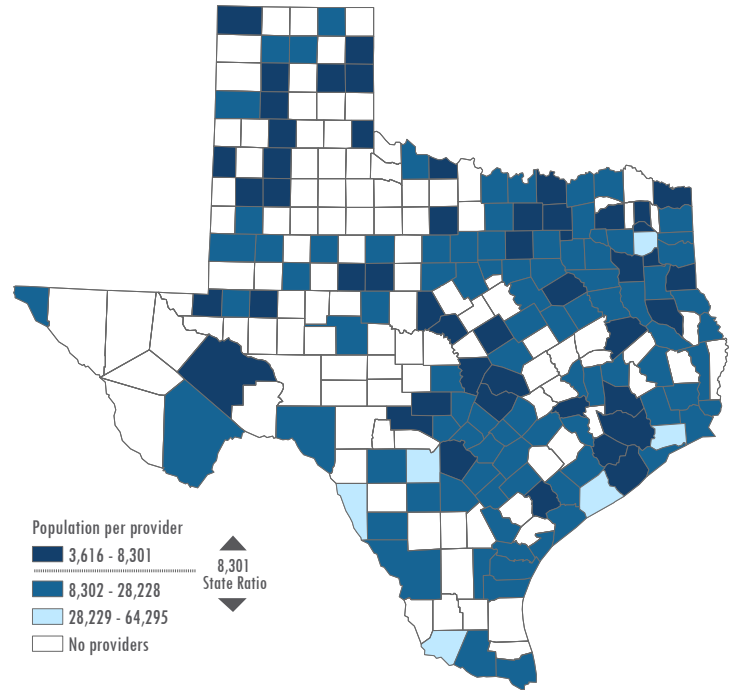
### Age Distribution of Optometrists, by Gender

Age Group	Female	Male	Total
≤30	194	89	283
31-35	330	163	493
36-40	317	219	536
41-45	273	214	487
46-50	170	190	360
51-55	107	196	303
56-60	83	240	323
61-65	41	215	256
>65	12	219	231
<b>Total</b>	<b>1,527</b>	<b>1,745</b>	<b>3,272</b>

Within ten years, 24.8% of the current Texas optometrist workforce will be at or past retirement age.

- Among optometrists over 55 years of age, males comprised 83.2% of the workforce.
- Among optometrists between 41 and 55 years of age, males comprised 52.5% of the optometrist workforce.

### Ratio of Texas Population to Optometrist, by County



Geographic Designation	Ratio of population to optometrist
Metropolitan	7,875
Non-metropolitan	14,184
Border	18,114
Non-border	7,810
<b>Texas</b>	<b>8,031</b>

Optometrists were not evenly distributed throughout the state.

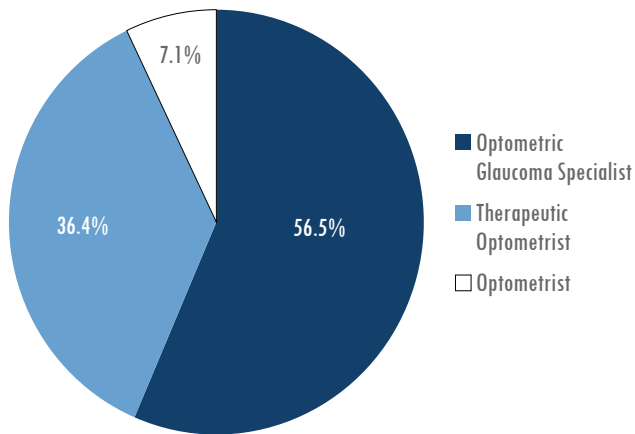
- There was a 57.2% difference between the number of optometrists in metropolitan and non-metropolitan areas even after controlling for population differences.
- Between border and non-border areas the percent difference was 79.5%.

### Gender of Optometrists

- In 2014, 46.7% of optometrists were female and 53.3% were male.
- In 2004, 36.3% were female and 63.7% were male.
- Among optometrists aged 40 years or younger in 2014, 64.1% were female and 35.9% were male.

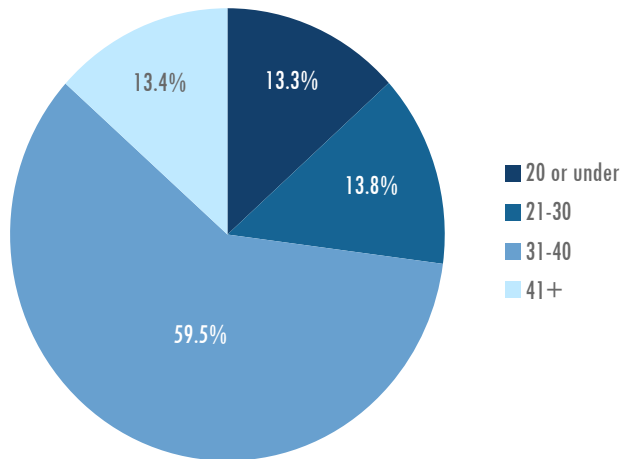


## Employment Characteristics of Optometrists Primary Practice Speciality<sup>1</sup>



<sup>1</sup> Practice speciality data were unavailable for 82 optometrists.

## Hours Worked at Primary Practice<sup>2</sup>



<sup>2</sup> Time data were unavailable for 73 optometrists.

## Employment Characteristics of Optometrists Primary Practice Setting<sup>3</sup>

Setting	Optometrists	Percent
Private Office	2,967	93.0%
Public Clinic/College/University	114	3.6%
Hospital	37	1.2%
Governmental Facility	29	0.9%
Military Facility	25	0.8%
Nursing Home	11	0.3%
Drug or Ophthalmic Device Company	7	0.2%
Research Facility	2	0.0%
<b>Total</b>	<b>3,192</b>	<b>100%</b>

<sup>3</sup> Practice setting data were unavailable for 80 optometrists.